

User Manual

EXHIBIT 4

FCC ID.: HWFA4CIS-USB

鴻友科技股份有限公司
Mustek Systems Inc.
新竹市新竹科學園區研發二路 25 號
No. 25, R&D Rd., II Science-Based Industrial Park, Hsin-Chu, Taiwan, R.O.C.
Tel: 886-3-577-9373 Fax: 886-3-578-4139



600/1200 dpi USB Scanner Installation Guide



1

Unpacking the Scanner

Unpack the package and inspect the items closely to make sure no items is damaged.

- The package should include:
- 600/1200 dpi USB Scanner Installation Guide
 - The Scanner Installation CD
 - Power Adapter
 - Scanning Utilities Manual (either included in the Installation CD or printed separately)

2

Driver Installation

NOTE: Please complete the driver installation before installing the Scanner. Do not connect the power adapter to the scanner at this stage.

1. Insert the Driver Installation CD into your disk drive.



2. Click on "Start" and select "Run".



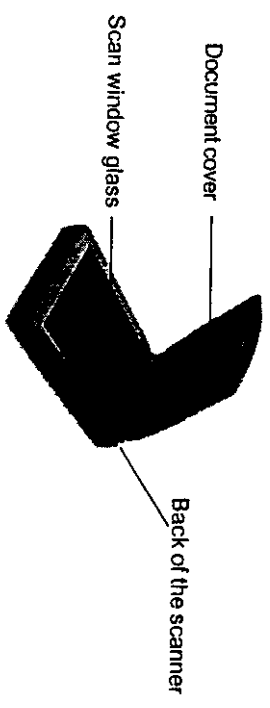
3. In the "Run" dialog box, type "drive:\setup" where drive is your CD-ROM drive and click "OK."

4. Follow all on-screen instructions.

NOTE: When you are presented with the option of whether to restart Windows after completing the driver installation please choose "Yes".

3

The Scanner Parts



82-062-00010

4

Connecting the Scanner to the PC

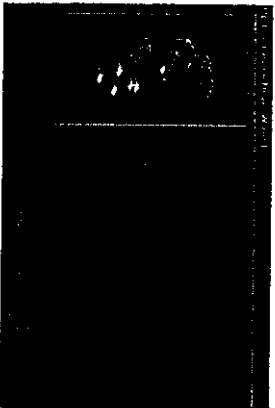
- Refer to the following illustration and steps to connect your scanner.
1. With the power to your PC on, connect the scanner's USB cable to the USB port of your PC.
 2. Connect the power adapter to the Scanner and plug it into an appropriate power outlet.
- Upon connecting the power adapter, the Windows operating system would automatically detect your scanner and update your system configuration.



4A

For Windows 95 OSR2 Users:

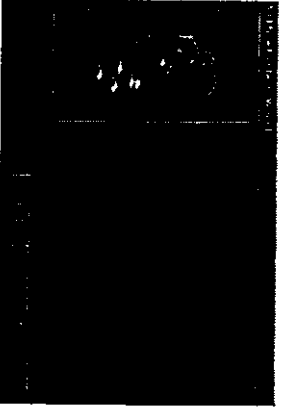
- Upon installing the software driver and connecting the power adapter if the Update Device Driver Wizard dialog box appears, perform the following steps:
1. Click on the "Next" button.
 2. On the next screen click on the "Other Locations" button and go into the "Win95" directory of your installation CD.
 3. Click on the "OK" button and on the next screen Windows will confirm that it has found the driver for your scanner.
 4. Follow all on-screen instructions to complete driver installation.



4B

For Windows 98 Users:

- Upon installing the software driver and connecting the power adapter if the Add New Hardware Wizard dialog box appears, perform the following steps:
1. Click on the "Next" button.
 2. On the next screen select the following option and go into the



Win98 directory of your installation CD.

5

Using the Scanner

There are two separate methods to scan an image, the Scan Dialog box and the TWAIN Dialog box. Refer to the Scanning Utilities Manual for a description of these to facilitate your use of the scanner, or refer to the on-line manual and help system any time when using the scanner software. This easy-to-use system contains detailed information about the scanner topics and its functions.

5A

To access the Scan Dialog box, you can do any of the following:

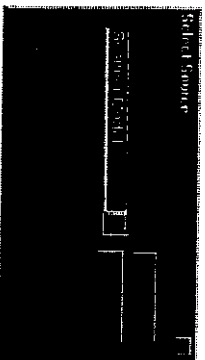
1. **The Cover Sensor:** Simply lift the cover and begin scanning. This scanner is equipped with a Cover Sensor feature that automatically opens the Scan Dialog box; or
2. **The Direct Scan Icon:** Double-click the Direct Scan icon, located in your Windows taskbar; or
3. **The Scan Dialog Box Item:** Click on "Start" on your Windows desktop and locate the name of your scanner model under "Programs". Then double-click the item "Scan Dialog Box".



5B

To access the TWAIN Dialog box, you can do the following:

1. Launch the TWAIN-compliant program (e.g. iPhoto Plus).
2. Under the File menu open the **Acquire** command and choose **Select Source**.
The Select Source dialog box appears.
NOTE: In some image editing software you may choose **Select Source** directly from the Select Source command rather than the **Acquire** command.



3. Choose your scanner model from the list.
4. Click on "Select". The Select Source dialog box closes.
5. Return to the File menu. Locate and click the **Acquire** command. The Acquire command is likely to be found beside the Select command. The TWAIN Dialog box appears.

5C

To access the on-line manual and help system:

1. Click on "Start" and select "Programs".
2. Click on your scanner model and select "Scanner's User's Guide".

6

Specifications

Scanner Type	Color Flatbed
Scan Area	21.6 cm x 29.7 cm (8.5" x 11.7")
Scan Modes:	
True Color (600 dpi)	30-bit (Internal), 1.074 billion colors
(1200 dpi)	36-bit (Internal), 68.7 billion colors
Gray Mode (600 dpi)	24-bit (External), 16.7 million colors
(1200 dpi)	10-bit (Internal), 1024 shades of gray
Text/Line Art	12-bit (Internal), 4096 shades of gray
Scan Method	8-bit (External), 256 shades of gray
Resolution Control:	1 bit/pixel (2 levels)
Optical (600 dpi)	Single Pass Scanning
(1200 dpi)	
Enhanced (600 dpi)	300dpi (H) x 600dpi (V)
(1200 dpi)	600dpi (H) x 1200dpi (V)
Scanning Data Buffer	9600dpi x 9600dpi (software controlled)
Power Consumption	19200dpi x 19200dpi (software controlled)
Operating Humidity	32KB (maximum)
Storage Temperature	9.6 Watt (12V DC)
Storage Humidity	10°C ~ 40°C (50°F ~ 104°F)
Dimensions:	35% ~ 80% RH, Non-Condensing
(600 dpi)	-10°C ~ 60°C (14°F ~ 140°F)
(1200 dpi)	20% ~ 80% RH, Non-Condensing
Weight:	
(600 dpi)	404 x 257 x 54 mm
(1200 dpi)	15.9 x 10.1 x 2.1 inches (L x W x H)
	410 x 268 x 36 mm
	16.1 x 10.6 x 1.4 inches (L x W x H)
	2.3 Kg (5.06 Lbs.)
	1.9 Kg (4.20 Lbs.)

Instruction Manual

Federal Communication Commission Interference Statement

This equipment has been tested and found to comply with the limits for a Class B digital device, pursuant to Part 15 of the FCC Rules. These limits are designed to provide reasonable protection against harmful interference in a residential installation. This equipment generates, uses and can radiate radio frequency energy and, if not installed and used in accordance with the instructions, may cause harmful interference to radio communications. However, there is no guarantee that interference will not occur in a particular installation. If this equipment does cause harmful interference to radio or television reception, you can be determined by turning the equipment off and on, the user is encouraged to try to correct the interference by one of the following measures:

- Reorient or relocate the receiving antenna.
- Increase the separation between the equipment and receiver.
- Connect the equipment into an outlet on a circuit different from that to which the receiver is connected.
- Consult the dealer or an experienced radio/TV technician for help.

FCC Caution: To assure continued compliance use only the provided USB interface cables with ferrite core when connecting to computer. Any changes/modifications not expressly approved by the party responsible for compliance could void the user's authority to operate this equipment.