

*Introducing*  
**Be@rPaw 1200**

Mustek Systems, Inc.



**INSTRUCTIONS MANUAL  
FEDERAL COMMUNICATIONS COMMISSION  
INTERFERENCE STATEMENT**

This equipment has been tested and found to comply with the limits for a Class B digital device, pursuant to Part 15 of the FCC Rules. These limits are designed to provide reasonable protection against harmful interference in a residential installation. This equipment generates, uses and can radiate radio frequency energy and, if not installed and used in accordance with the instructions, may cause harmful interference to radio communications. However, there is no guarantee that interference will not occur in a particular installation. If this equipment does cause harmful interference to radio or television reception, which can be determined by turning the equipment off and on, the user is encouraged to try to correct the interference by one or more of the following measures:

- Reorient or relocate the receiving antenna.
- Increase the separation between the equipment and receiver.
- Connect the equipment into an outlet on a circuit different from that to which the receiver is connected.
- Consult the dealer or an experienced radio/TV technician for help.

**CAUTION:**

To assure continued FCC compliance:

- (1) Any changes or modifications not expressly approved by the grantee of this device could void the user's authority to operate the equipment.

**FCC Label Compliance Statement:**

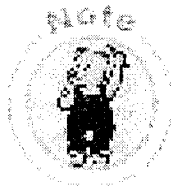
This device complies with Part 15 of the FCC Rules. Operation is subject to the following two conditions: (1) this device may not cause harmful interference, and (2) this device must accept any interference received, including interference that may cause undesired operation.

# Unpacking the Scanner

Unpack the package and inspect the items closely to make sure no item is damaged. The package should include:

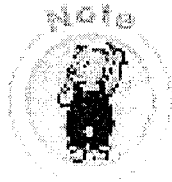
- The Scanner
- Power Adapter
- BearPaw Scanner User's Guide
- Installation CD
- Scanning Utilities Manual (either included in the Installation CD or printed separately)

## Installing Drivers



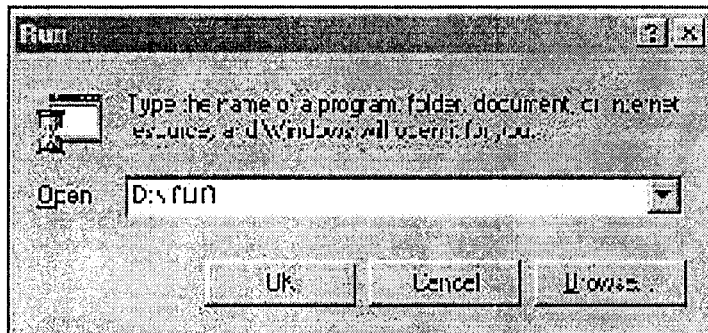
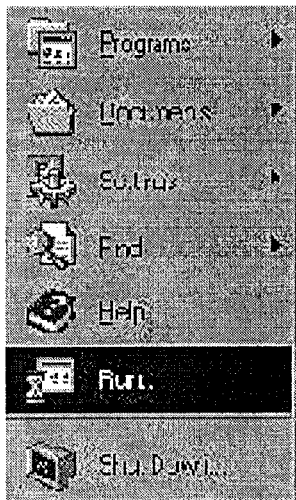
Please complete the software drivers installation before installing the scanner. Do not connect the power adapter to the scanner at this stage.

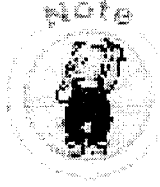
1. Insert the Driver Installation CD into your disk drive.
2. Follow all on screen instructions.



If, after inserting the Driver Installation CD into your disk drive, the Driver Installation Welcome screen does not appear, do the following:

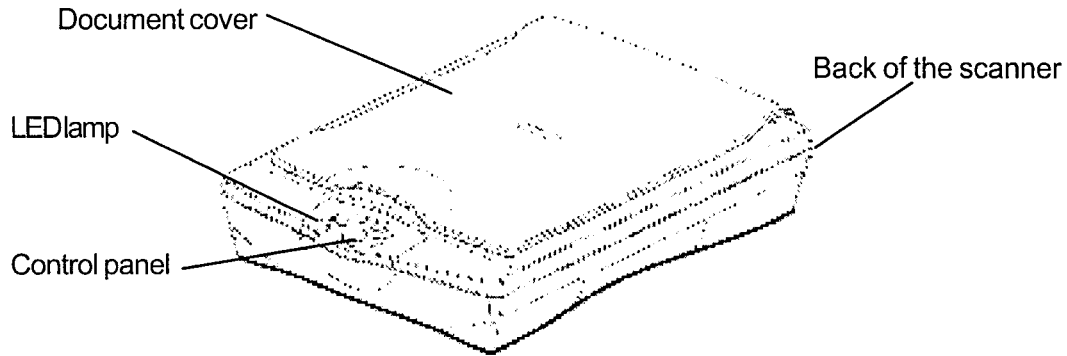
1. Click on **Start** and select **Run**.
2. In the **Run** dialog box, type **drive:\run** where drive is your CD-ROM drive and click **OK**.





When you are presented with the option of whether to restart Windows® after completing the software drivers installation please choose **Yes**.

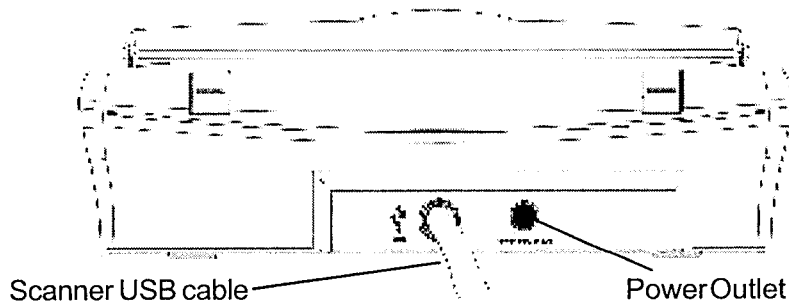
## The Scanner Parts



## Installing Hardware

Refer to the following illustration and steps to connect your scanner:

1. With the power to your PC on, connect the scanner's USB cable to the USB port of your PC.
  2. Connect the power adapter to the scanner and plug it into an appropriate power outlet.
- Upon connecting the power adapter, the Windows® operating system would automatically detect your scanner and update your system configuration.



# Specifications

Scanner Type	Color Flatbed
Scan Area	21.6 cm x 29.7 cm (8.5" x 11.7")
Scan Modes:	
True Color	36-bit (Internal), 68.7 billion colors 24-bit (External), 16.7 million colors 48-bit (software enhanced)
Gray Mode	12-bit (Internal), 4096 shades of gray 8-bit (External), 256 shades of gray
Text/Line Art	1 bit/pixel (2 levels)
Scan Method	Single Pass Scanning
Resolution Control:	
Optical	600dpi (H) x 1200dpi (V)
Enhanced	19200dpi x 19200dpi (software controlled)
Scanning Data Buffer	512KB (maximum)
Interface	USB (Universal Serial Bus)
Voltage Requirement	100 ~ 240 Vac, 50 ~ 60 Hz
Power Consumption	15W (12V DC), 1.25A switching power adapter
Operating Temperature	10°C ~ 40°C (50°F ~ 104°F)
Operating Humidity	35% ~ 80% RH, Non-Condensing
Storage Temperature	-10°C ~ 60°C (14°F ~ 140°F)
Storage Humidity	20% ~ 80% RH, Non-Condensing
Dimensions	464 x 290 x 100 mm (L x W x H)
Weight	2.8 Kg