

Bluetooth

Stereo Headset and Audio Dongle



Quick Guide

82-156-00070

EN

FR DE

IT

ES

NL

PT

DK

SW

FI

TU

PL

GR

RU

Model No.: MBT-A120

FCC ID: HWF-MBTA120

Model No.: MBT-S120

FCC ID: HWF-MBTS120

CE0678



Tested To Comply With FCC Standards
FOR HOME OR OFFICE USE

This device complies with part 15 of the FCC rules. Operation is subject to the following two conditions:

- (1) This device may not cause harmful interference.
- (2) This device must accept any interference received, including interference that may cause undesired operation.

Any changes or modifications not expressly approved by the party responsible for compliance could void the authority to operate equipment.



This symbol on the product or in the instructions means that your electrical and electronic equipment should be disposed at the end of its life separately from your household waste. There are separate collection systems for recycling in the EU. For more information, please contact the local authority or your retailer where you purchased the product.

Das Symbol "Mülltonne durchgestrichen" auf dem Produkt bzw. in der Gebrauchsanweisung weist daraufhin, dass Elektro- und Elektronikgeräte separat vom Hausmüll gesammelt und entsorgt werden müssen. In der EU stehen verschiedene Sammlungssysteme zur Rücknahme und Wiederverwertung zur Verfügung.

Für weitere Informationen wenden Sie sich bitte an die örtlichen Behörden bzw. an Ihren Händler.

Ce symbole qui apparaît sur le produit ou dans les instructions signifie que votre appareil électrique ou électronique, lorsqu'il ne fonctionne plus, doit être jeté séparément de vos déchets ménagers. En Europe, il existe différents systèmes de collecte pour le recyclage.

Pour de plus amples informations, contactez l'autorité locale ou le revendeur auprès duquel vous avez acheté le produit.

Questo simbolo sul prodotto o nelle istruzioni significa che l'apparecchiatura elettrica ed elettronica va smaltita, alla fine del suo ciclo di durata, separatamente dai rifiuti domestici.

Nell'UE esistono sistemi di raccolta separati per il riciclaggio.

Per maggiori informazioni, rivolgersi all'autorità locale o al dettagliante presso il quale il prodotto è stato acquistato.

Este símbolo que puede aparecer en el producto o en las instrucciones indica que el aparato electrónico o eléctrico no deberá desecharse al final de su vida con el resto de los desechos domésticos sino por separado.

En la UE existen sistemas de recogida selectiva para el reciclado.

Para más información, póngase en contacto con las autoridades locales o el comercio donde haya adquirido el producto.

Dit symbool op het product of de handleiding betekent dat u elektrische en elektronische apparatuur aan het einde van de levensduur, gescheiden van huishoudelijk afval moet weggooiden. Er zijn afzonderlijke inzamelsystemen voor recycling in de EU. Neem contact op met uw lokale instanties of met de verkoper waar u het product hebt gekocht voor meer informatie.

Este símbolo presente no produto ou nas instrucións significa que o seu equipamento eléctrico ou electrónico deve ser eliminado no fim da súa vida útil mas separadamente do lixo doméstico. Existen diferentes sistemas de recolla para reciclagem na EU. Para mais informacións, contacte as entidades locais ou o vendedor junto do qual comprou o seu produto.

Den här symbolen på produkten eller i instruktionerna betyder att den elektriska och elektroniska utrustningen ska slängas separat från annat hushållsavfall när den inte fungerar längre. Inom EU finns separata återvinningssystem för avfall. Kontakta lokala myndigheter eller din återförsäljare för mer information.

Dette symbol på produktet eller i vejledningen betyder, at det udtjente elektriske eller elektroniske udstyr ikke må bortskaffes sammen med husholdningsaffald. I EU-lande findes der separate indsamlingssystemer til genbrug. Kontakt de lokale myndigheder eller forhandleren for at få yderligere information.

Tämä tuotteen tai ohjeisiin merkitty symboli tarkoittaa, että sähkölaitteet ja elektroniikka on hävitettävä käyttöikänsä päätyessä erillään kotitalousjätteestä. EU:ssa on kierrätystä varten erilliset keruujärjestelmät. Jos haluat lisätietoja, ota yhteys paikallisiin viranomaisiin tai tuotteen myyneeseen liikkeeseen.

Üründeki veya talimatlardaki bu işaret elektrikli ve elektronik cihazınızın kullanım ömrü sona erdiğinde cihazın ev çöplerinden ayrı olarak atılması gerektiği anlamına gelmektedir. AB'de yeniden işleme için ayrı toplama sistemleri bulunmaktadır. Ayrıntılı bilgi için lütfen yerel yetkili veya ürünün satın aldığınız bayi ile temasa geçiniz.

Niniejszy symbol na produkcie lub w instrukcji oznacza, że po zakończeniu eksploatacji urządzenia elektrycznego lub elektronicznego nie należy wyrzucać go razem z innymi odpadami domowymi. W krajach UE istnieją oddzielne systemy gromadzenia i utylizacji tego typu odpadów.

Dodatkové informácie možno získať od vlády lokálnych lub w punkcie zakupu tego produktu.

Αυτό το σύμβολο στο προϊόν ή στις οδηγίες σημαίνει πως η ηλεκτρική και ηλεκτρονική σας συσκευή θα πρέπει να απορριφθεί στο τέλος της ζωής της ξεχωριστά από τα οικιακά σας απορρίμματα. Στην ΕΕ υπάρχουν ξεχωριστά συστήματα συλλογής για την ανακύκλωση.

Για περισσότερες πληροφορίες, παρακαλούμε επικοινωνήστε με τις τοπικές αρχές ή με το κατάστημα στο οποίο αγοράσατε το προϊόν.

Данный символ на изделии или в инструкциях означает, что указанное электрическое или электронное оборудование необходимо утилизировать по окончании срока службы отдельно от бытовых отходов. В ЕС применяются раздельные системы сбора для переработки.

За дополнительной информацией обращайтесь в местные органы власти или к продавцу, у которого было приобретено изделие.

Model No.: MBT-A120

FCC ID: HWF-MBTA120

Model No.: MBT-S120

FCC ID: HWF-MBTS120



This device complies with part 15 of the FCC rules. Operation is subject to the following two conditions:

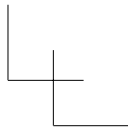
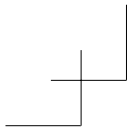
- (1) This device may not cause harmful interference.
- (2) This device must accept any interference received, including interference that may cause undesired operation.

Any changes or modifications not expressly approved by the party responsible for compliance could void the authority to operate equipment.

FEDERAL COMMUNICATIONS COMMISSION INTERFERENCE STATEMENT

This equipment has been tested and found to comply with the limits for a Class B digital device, pursuant to Part 15 of the FCC Rules. These limits are designed to provide reasonable protection against harmful interference in a residential installation. This equipment generates, uses and can radiate radio frequency energy and, if not installed and used in accordance with the instructions, may cause harmful interference to radio communications. However, there is no guarantee that interference will not occur in a particular installation. If this equipment does cause harmful interference to radio or television reception, which can be determined by turning the equipment off and on, the user is encouraged to try to correct the interference by one or more of the following measures:

82-156-00090



- Reorient or relocate the receiving antenna.
- Increase the separation between the equipment and receiver.
- Connect the equipment into an outlet on a circuit different from that to which the receiver is connected.
- Consult the dealer or an experienced radio/TV technician for help.

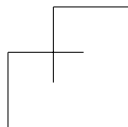
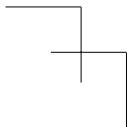
CAUTION:

Any changes or modifications not expressly approved by the grantee of this device could void the user's authority to operate the equipment.

RF EXPOSURE WARNING:

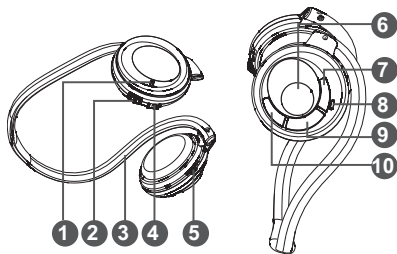
The equipment complies with FCC RF exposure limits set forth for an uncontrolled environment.

The equipment must not be co-located or operating in conjunction with any other antenna or transmitter.



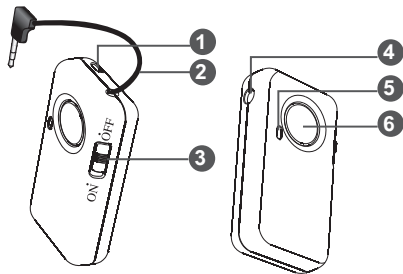
Headset

- 1 LED Indicator
- 2 Power Switch
- 3 Behind-the-neck Band
- 4 DC-In Jack
- 5 Microphone
- 6 Talk/Pairing Button
- 7 Volume Up Button
- 8 LED Indicator
- 9 Stop Button
- 10 Volume Down Button



Dongle

- 1 Strap Holder
- 2 Audio-In Connector
- 3 Power Switch
- 4 DC-In Jack
- 5 LED Indicator
- 6 Pairing Button

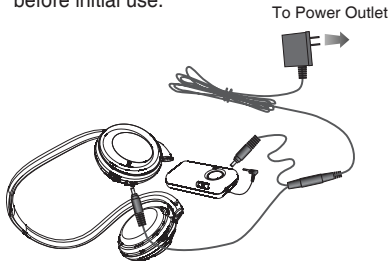


Preparation

EN

Charging

Please charge the built-in battery for **5** hours before initial use.



- Connect the split ends of the supplied AC adapter (**5V/0.5A**) to the DC-IN jacks of the headset and the dongle. Connect the other end to a wall outlet.
- The LED indicator will light **RED** when charging.
- The LED indicator will **TURN OFF** when batteries are fully charged.

Low battery

When the battery is low, the LED indicator will **ash red**. Please charge the battery for approximately **3** hours.

Note:

Do not use the headset or dongle while charging, and do not connect the AC Adapter while the headset or dongle is in use.

Power on/off

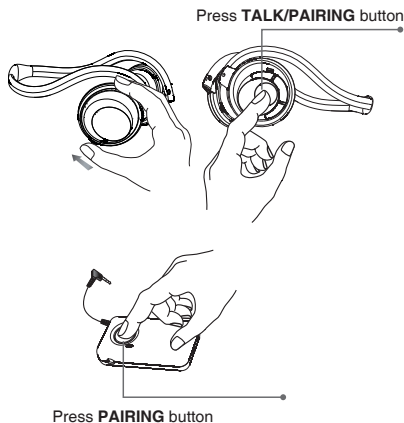
Slide the power switch to power on/off the headset and dongle. The LED indicator ashes blue when the power is **ON**.

Pairing the Headset and Dongle

- 1 Press and hold the **TALK/PAIRING button on the headset** and then slide the power switch to power it on.
- 2 Power on the dongle and then press the **PAIRING button** to start pairing.
- 3 Release the buttons when the LEDs flash red and blue alternatively. (Now they are in pairing mode.)
- 4 The LEDs flash blue once per second when the devices are successfully paired.

Note:

If the pairing fails, power off both the devices and repeat steps 1~2 until the pairing succeeds.



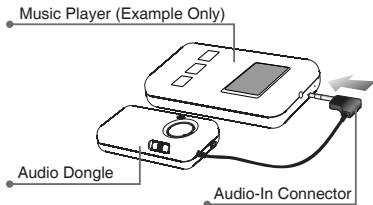
Using Your Dongle

EN

Listening to the Music

Make sure the headset and dongle have been paired successfully before playing music.

- 1 Connect the dongle's AUDIO-IN connector into a music player, walkman or CD player.
- 2 Power on the dongle, headset and music player.
- 3 Play the music player and the music will be heard on the headset.
- 4 To stop the music, press the **PAIRING** button on the dongle.
- 5 To play the music again, press the **PAIRING** button on the dongle.

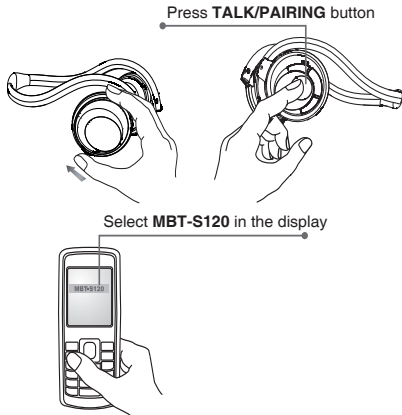


Pairing the Headset and a Mobile Phone

- 1 Press and hold the **TALK/PAIRING button on the headset** and then power on the headset.
- 2 Release the button when the LED ashes red and blue alternatively.
- 3 The headset is now in pairing mode and is ready to pair with your bluetooth mobile phone.
- 4 Use your bluetooth mobile phone to start searching for bluetooth audio devices.
- 5 Select **"MBT-S120"** in the mobile phone display when the headset is found.
- 6 The phone will ask for a pin code, enter: **0000**.
- 7 The LED indicator ashes blue once every 2 seconds when both the headset and mobile phone are successfully paired.

Notes:

- 1) Your headset can save the pairing information of up to **8** phones, but connect to only **one** phone at a time.
- 2) The mobile phone may provide the function of changing the headset's name. "MBT-S120" can be replaced by the name that you prefer.



Using Your Headset

EN

Using the Headset

Make a Call

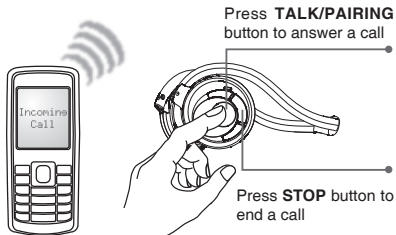
Use the phone's keypad to dial the phone number that you want to call.

Answer a Call

When receiving a call, you will hear a ring tone through the headset. Press the **TALK/PAIRING** button to answer the call.

End a Call

Press the **STOP** button on the headset or the end-call button on the mobile phone to end a call.



Redial the Last Call

Press and hold the **STOP** button on the headset for approximately 2 seconds to redial the last number.

Make a Voice Dial

Press and hold the **TALK/PAIRING** button until you hear a tone, then speak a voice tag to make a voice dial.

Note:

Make sure your mobile phone supports voice dialing function and you have already recorded the voice tag before operating.

Receiving or Making a Call While Listening to the Music

The headset enables an auto-switching function. Once you receive or make a call during music playback, you can hear the ring or dial tone from the headset. When the call ends, the music will resume.

Status	Headset Left Ear LED	Dongle
Pairing	Flashes blue and red alternatively until the pairing is complete or time out (within 60 seconds)	
Connecting	Flashes blue twice per second	
Connected (to mobile phone)	Flashes blue once every 2 seconds (headset only)	
Connected	Flashes blue once per second	
Idle (pairing fails)	Flashes blue once every 3 seconds	
Battery low	Flashes red	
Status	Headset Right Ear LED	Dongle
Charging	Light red	
Battery Full	Light out	