

# Fellowes SB-87CS Paper Shredder

## Instruction Manual



Provided By

**MyBinding.com**  
*When Image Matters.*

## Help Line

Australia	+ 1-800-33-11-77
Canada	+ 1-800-665-4339
México	+ 1-800-234-1185
United States	+ 1-800-955-0959

## Fellowes

Australia	+ 61-3-8336-9700
Benelux	+ 31-(0)-76-523-2090
Canada	+ 1-905-475-6320
Deutschland	+ 49-(0)-5131-49770
France	+ 33-(0)-1-30-06-86-80
Italia	+ 39-071-730041
Japan	+ 81-(0)-3-5496-2401
Korea	+ 82-(0)-2-3462-2884
Malaysia	+ 60-(0)-35122-1231
Polska	+ 48-(22)-771-47-40
Spain	+ 34-91-748-05-01
Singapore	+ 65-6221-3811
United Kingdom	+ 44-(0)-1302-836836
United States	+ 1-630-893-1600

**www.fellowes.com**

**Fellowes** 1789 Norwood Avenue, Itasca, Illinois 60143-1095 • USA • 630-893-1600

<http://www.fellowes.com>

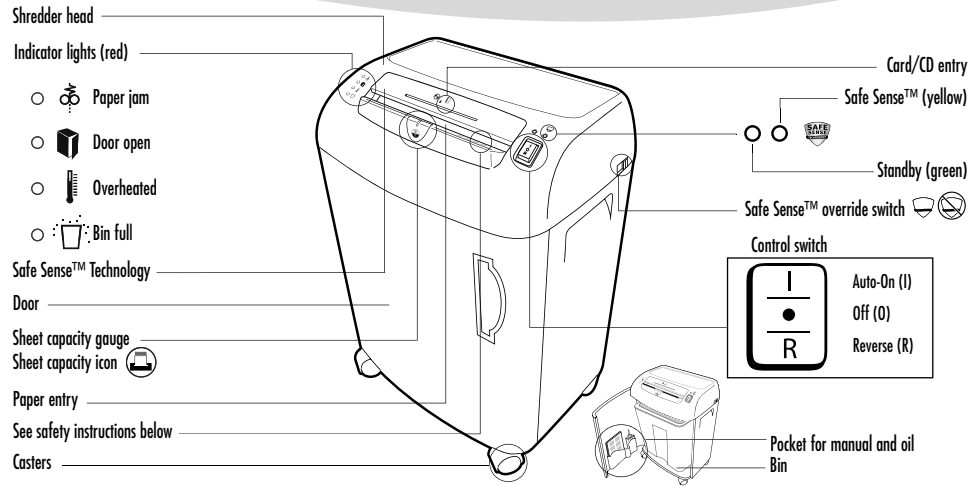
Australia	Canada	Deutschland	France	Japan	Polska	United Kingdom
Benelux	China	España	Italia	Korea	Singapore	United States



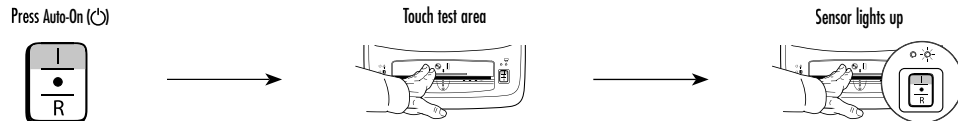
**SB-87Cs**

Please read these instructions before use.

**MyBinding.com**  
When Image Matters.



## To Test Safe Sense™ Technology



## CAPABILITIES

**Will shred:** Paper, credit cards, CD/DVDs, staples and small paper clips

**Will not shred:** Continuous forms, adhesive labels, transparencies, newspaper, cardboard, large paper clips, laminates or plastic other than noted above

### Paper shred size:

Confetti-Cut ..... 5/32" x 1-1/2" (3.9 x 38mm)

### Maximum:

Sheets per pass (Confetti-Cut) ..... 15\*  
Cards/CDs per pass ..... 1\*  
Paper width ..... 9"/229mm  
Continuous operation ..... 20 minutes

\*20lb., 8.5"x11" paper at 120v, 60Hz, SB-87Cs—5.0Amps; heavier paper, humidity or other than rated voltage may reduce capacity. Recommended daily usage rates: 50-100 paper passes; 50 cards; 10 CDs.

## IMPORTANT SAFETY INSTRUCTIONS — Read Before Using!

### WARNING



- Keep away from children and pets. Always unplug when not in use.
- Keep foreign objects — gloves, jewelry, clothing, hair, etc. — away from shredder openings. If object enters top opening, switch to Reverse (R) to back out object.

### CAUTION

- Avoid touching exposed blades under Confetti-Cut shredder head.
- Use only designated entry for cards/CDs. Keep finger away from CD hole.



- Never use aerosol, petroleum based or other flammable products on or near shredder. Do not use canned air on shredder.
- Do not use if damaged or defective. Do not open shredder head. Do not place near or over heat or water source.
- 15 sheets per pass to avoid jams.

- The grounded socket-outlet shall be installed near the equipment and shall be easily accessible.

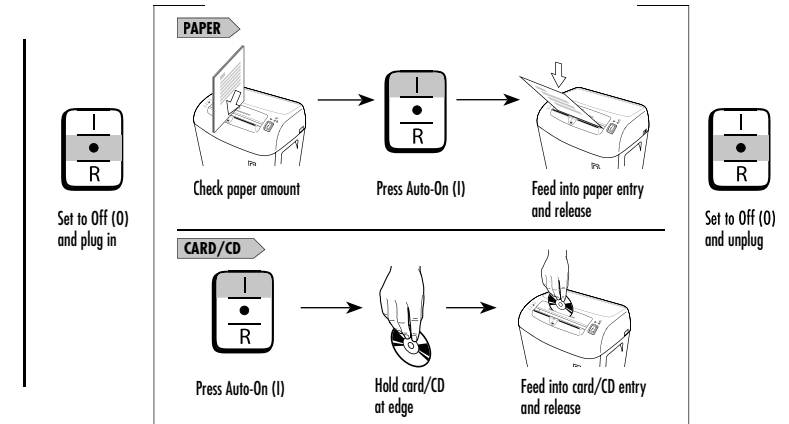
## OPERATION

Shredder comes ready to use. Insert waste bag for easy disposal.



**Continuous operation:**  
20-minute maximum

**NOTE:** Shredder runs briefly after each pass to clear entry. Continuous operation beyond 20-minutes will trigger 40-minute cool down period.

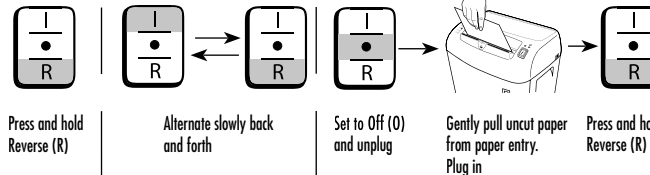


Breakthrough Safety Technology! Safe Sense™ stops shredding when hands are too close to the opening. **Override switch** - is only needed when a jam occurs and Safe Sense™ light remains on. **Warning** - when switch is in override position the Safe Sense™ light flashes and the Safe Sense™ feature is rendered un-functional.

## TROUBLESHOOTING



**Paper jam:** Set to Off (O) and empty bin. Replace bin, close door, and follow any or all of the below procedures.



### Indicator lights:

- Yellow - Safe Sense™ active
- Yellow flashing - Safe Sense™ not active
- Make sure door is tightly closed
- Wait 40 minutes for motor to cool down
- Remove and empty bin

**Note:** If Safe Sense™ light remains on, you must engage override switch in order to perform above steps.

## MAINTENANCE

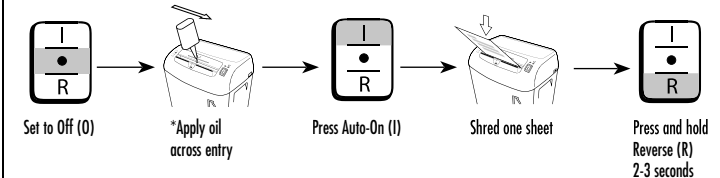


Follow oiling procedure below and repeat twice.

Run regularly in reverse for one minute

Oil when bin is full, or immediately, if:

- Capacity decreases
- Motor sounds different, or Shredder stops running



### CAUTION

\*Only use a non-aerosol vegetable oil in long nozzle container such as Fellowes 35250

## WARRANTY

LIMITED WARRANTY Fellowes Inc. ("Fellowes") warrants the cutting blades of the machine to be free from defects in material and workmanship for 7 years from the date of purchase by the original consumer. Fellowes warrants all other parts of the machine to be free from defects in material and workmanship for 1 year from the date of purchase by the original consumer. If an part is found to be defective during the warranty period, our sole and exclusive remedy will be repair or replacement at Fellowes' option and expense of the defective part. This warranty does not apply in cases of abuse, mishandling, or unauthorized repair. ANY IMPLIED WARRANTY, INCLUDING THAT OF MERCHANTABILITY OR

FITNESS FOR A PARTICULAR PURPOSE, IS HEREBY LIMITED IN DURATION TO THE APPROPRIATE WARRANTY PERIOD SET FORTH ABOVE. In no event shall Fellowes be liable for an consequential or incidental damages attributable to this product. This warranty gives you specific rights. The duration, terms and conditions of this warranty are valid worldwide except where different limitations, restrictions, or conditions may be required by local law. For more details or to obtain service under this warranty, please contact us or your dealer.

When Image Matters.