

Xyron Wishblade

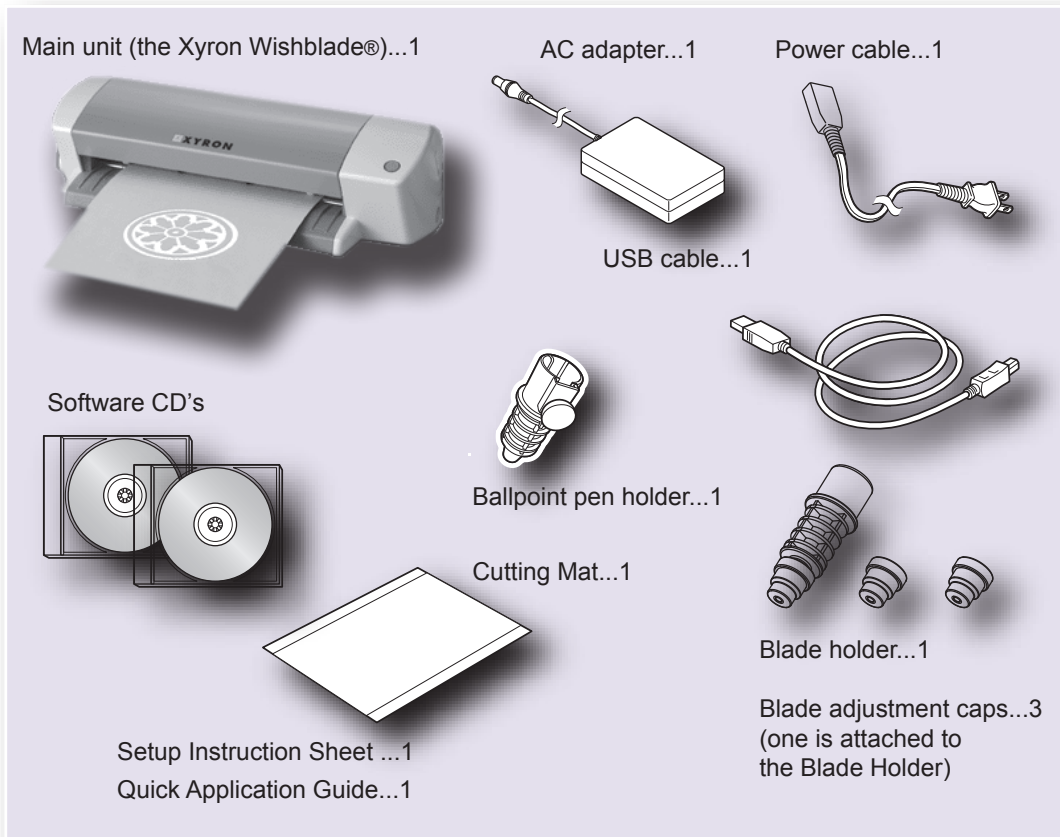
Getting Started Guide



Provided By

MyBinding.com
When Image Matters.

Setup - What's Included With My Wishblade?



Plugging It In

The power cord consists of 2 components the AC Adapter Plug and the Power Cord.

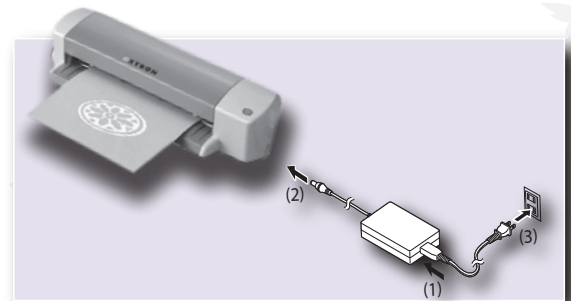
Insert the AC Adapter Plug into the Wishblade.

Insert the Power Cord into AC Adapter.

Then plug the Power Cord into an electrical outlet.

Turn the Wishblade On or Off by pressing the Blue Button on the top right of the machine.

Plug the square (printer) end of the USB cable in to the Wishblade and plug the thinner rectangular (computer) end into an open USB port on your computer.



NOTE: DO NOT plug into a USB hub, the Wishblade must be directly plugged into the computer, for the software to recognize the port.

Using the Cutting Mat

To cut paper or any media you must either place it on the Cutting Mat or it must have Xyron Adhesive Backing on it. You can run the paper or media through a Xyron 9" Creative Station™ to place the Adhesive backing to it.

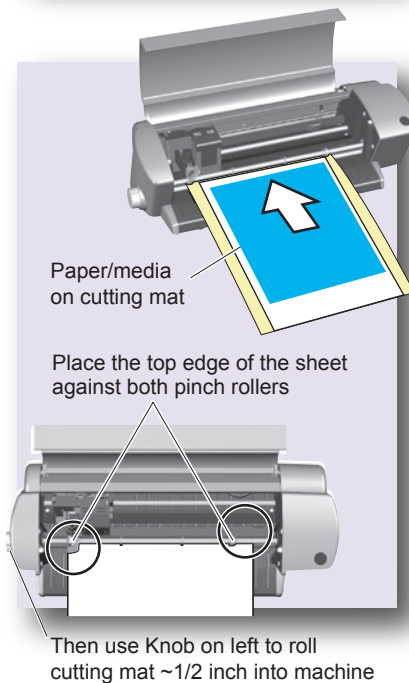
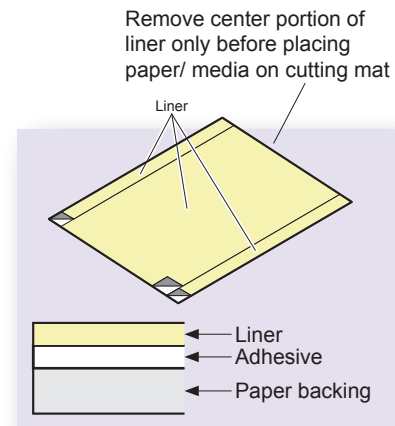
To use the cutting mat you must first remove the center portion of the liner to reveal the adhesive area below it.

NOTE: Do not remove the two side strips of the liner or the cutting mat will not feed properly.

Place your paper or media anywhere on the cutting mat. It is ok for the paper to extend over the side strips of the cutting mat.

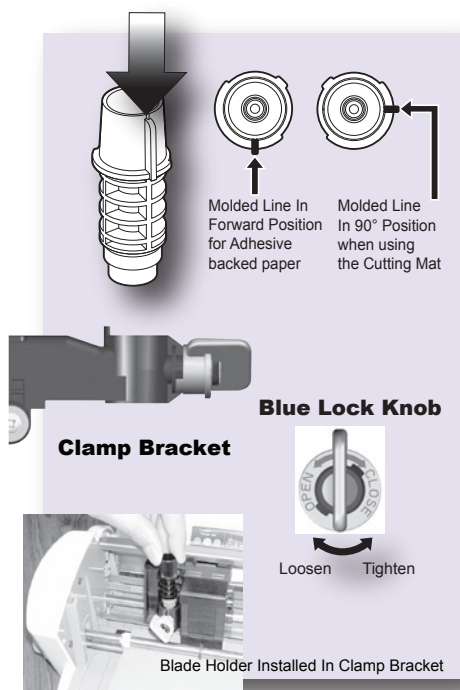
Insert the top edge of the cutting mat into the Wishblade making sure a portion of the cutting mat is beneath each pinch roller.

Roll the cutting mat about 1/2 inch into the machine using the knob on the left side of the machine.



Handling the Blade

The blade unit must be handled carefully. Small nicks or scratches can result in improper cutting. Therefore when not in use, place it in a safe area where it cannot roll or fall.



Installing the Blade

Place the Color Cap relevant to the paper or media you are using over the bottom portion of the blade unit. Place firmly into the blade housing inside the Wishblade. Make sure you hold the blue knob while inserting it. Insert it so that the top line is either in the 3 o'clock or 6 o'clock position. (Read the following information on how to choose the proper position and cap color.)

Using Colored Blade Caps

The blade caps are intended for use with different thicknesses of paper or media types. The blue cap is typically used with light weight paper. The yellow cap is used with medium to heavy weight papers as well as light weight card stocks. The pink cap should be used with heavy weight card stock.

Using the Blade Dial

Additionally, there is a dial located at the top of the blade unit (see arrow on illustration on the left and above). It adds or removes pressure to accommodate the different thicknesses of your media. There are two settings. The 3 o'clock position (Pointing to the Right). This position works great for medium to heavy weight papers. The 6 o'clock position (Pointing Toward You) is best for light-weight papers.

NOTE: For typical craft applications with medium weight printed papers or card stock use the yellow cap with the dial set to 3 o'clock. For typical vinyl applications with standard vinyl use the blue cap and the dial set to the 6 o'clock position.

There is a chart available on Xyron's website explaining which cap should be used and the position of the blade dial for the specific paper or media. The samples listed were cut using a Pink Xyron Wishblade, Xyron Create and Cut Plus, a new to mildly used blade and cutting mat. Results can vary, therefore when using a new medium we always recommend to do a test cut first. **Go To:** www.xyron.com/bladecaps

Software

After you have set up your Wishblade, it is time to install the software. Simply insert your CD into your computer and the setup program will automatically launch. Follow the onscreen instructions to install the software on your computer. If you are installing more than one software package, Xyron Wishblade Software and Xyron Create and Cut Software, they are on separate CD's and must be individually installed.

There are two available software packages from Xyron. They will allow you to use your Wishblade effectively. You do not need all of them, you can also use 3rd party software designed for Wishblade. This manual will discuss Xyron's Create and Cut Plus software program. The following chart shows the features of the new software compared to the past software available for the Wishblade.