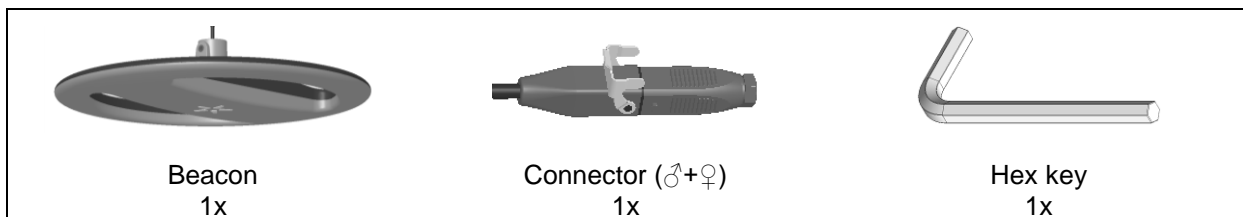


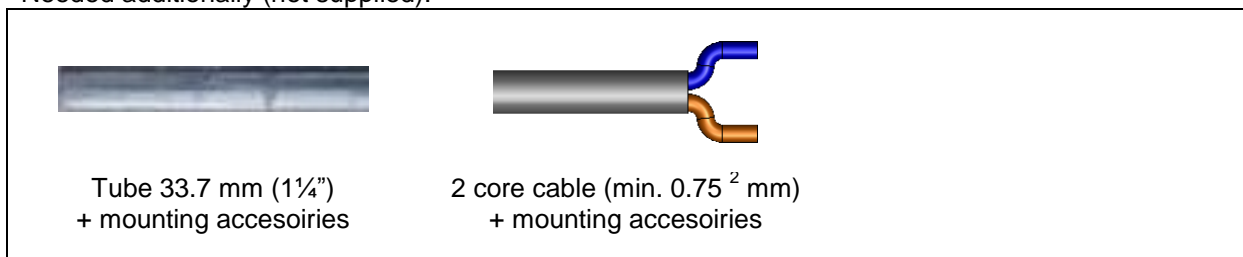
VP4201 COW POSITIONING BEACON



Supplied materials:



Needed additionally (not supplied):



Mounting advice:



Note:

<p>3 - 4 meter</p>		<p>Mount the beacons according to the positions in the dealer farm layout.</p> <p>Example farm building layout Nr of beacons different on other farms.</p>
--------------------	--	--

<p>VP2002</p> <p>! Max. 100 m.</p>	<p>VP2002</p> <p>! Max. 4</p>
------------------------------------	-------------------------------

- 1

UNIQUE ID
1234

Unique ID example
0007 0008 0009
1234 0006 0270
etc.
- 2

! Min. 50 cm
- 3
- 4

OR

OPEN

Brown

Blue

Blue

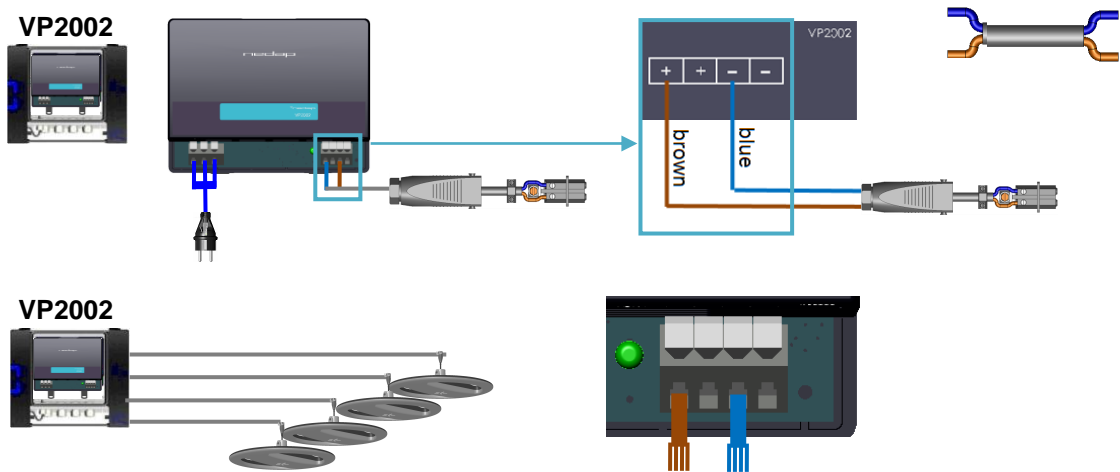
Brown

CLOSE

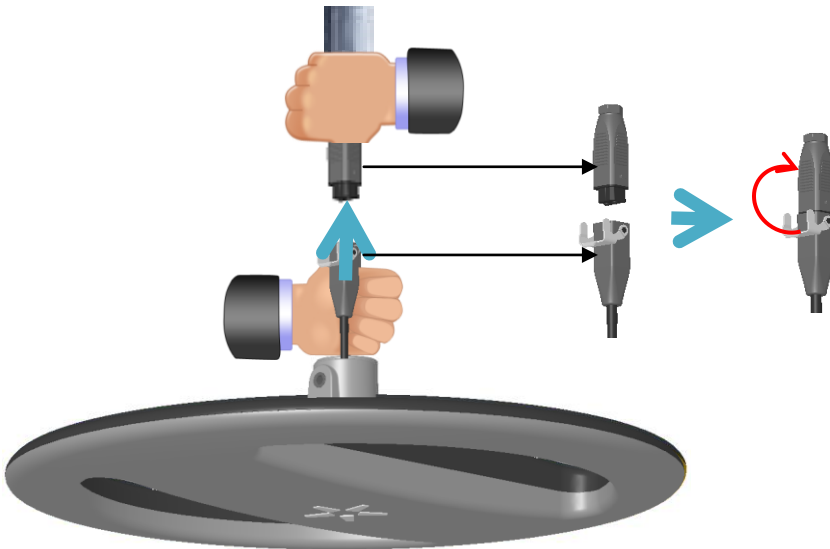
5



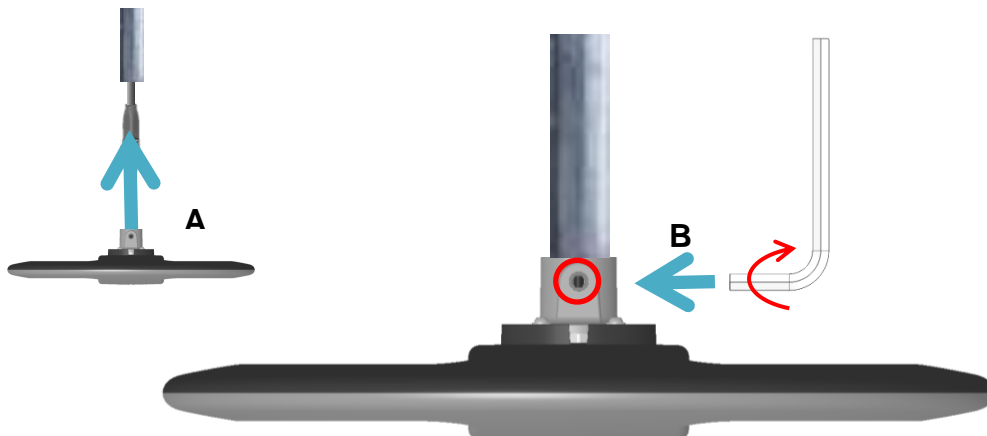
6



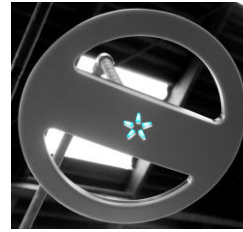
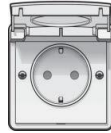
7



8



9



Specifications VP 4201

Dimensions	Ø 513,5 x 114 mm (H) Weight: ± 2870 gr. (± 3680 gr. including packaging)
Communication	UHF communication 100 kbit/s
Power	Input voltage 25 VDC, ± 20% Power consumption max 12,5W (max. 500 mA @ 25 VDC) No polarity when connecting with power supply
Software	Downloadable by the UHF network
Status indication	5 times blue LED
Antennas	1: Internal UHF antenna 2: Internal LF beacon antenna
Magnetic fieldstrength	< 63 dBµA/m @ 10m distance; within CE and FCC regulations
Environment	Temperature: Operating: -10 – 50 °C, Storage: -25 – 70 °C Relative humidity: 10 –100%
IP class	IP 65

Always use a NEDAP power supply VP2001 or VP2002. The Nedap guarantee-regulations are only valid when is installed as indicated in this manual. Install cable at a safe distance from (high) powered cables.
For more detailed information contact your local Nedap supplier or check the internet site.

Compliance statements (part15.19)

This device complies with part 15 of the FCC Rules and to RSS210 of Industry Canada.

Operation is subject to the following two conditions:

- (1) this device may not cause harmful interference, and
- (2) this device must accept any interference received, including interference that may cause undesired operation.

Cet appareil se conforme aux normes RSS210 exemptés de license du Industry Canada. L'opération est soumis aux deux conditions suivantes:

- (1) cet appareil ne doit causer aucune interférence, et
- (2) cet appareil doit accepter n'importe quelle interférence, y inclus interférence qui peut causer une opération non pas voulu de cet appareil.

Warning (part15.21)

Changes or modifications not expressly approved by party responsible for compliance could void the user's authority to operate the equipment.

This in particular is applicable for the antenna which can be delivered with the System.



See Service manual Cow Positioning on Velos Software CD and/or dealer login
www.nedap-livestockmanagement.com .