

UX302NC-R
User's Manual

1. About WIRELESS USB MODEM

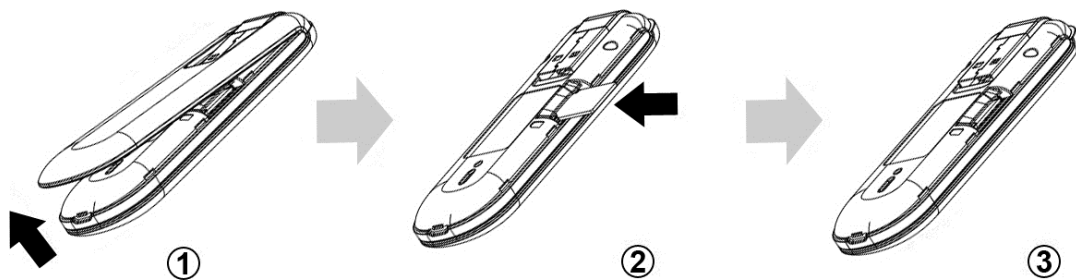
WIRELESS USB MODEM is a kind of online device which designed for the user who may use mobile internet to get online, and the user may access to the internet at anywhere and anytime.

2. Installation

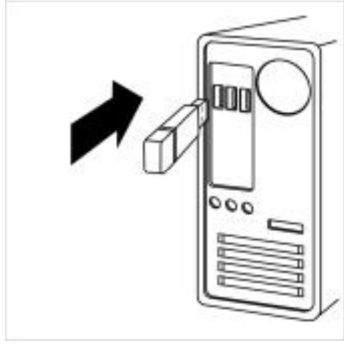
Before installation, Please close the antivirus and security software.

To Insert (U)SIM Card

1. Unfold the protecting cover of the product;
2. Pullout the (U)SIM card socket;
3. Insert the (U)SIM card into the socket (the golden contact side is downward)according to the direction indicated in the sketch, and confirm the (U)SIM card is inserted completely.



Connect the Computer and the WIRELESS USB MODEM




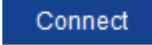
1. Insert MODEM device into the USB socket of the computer ;
2. After correctly inserted, the installation procedure will automatically operate; if installation procedure can not pop up automatically, please open My Computer---MODEM Disk and then double click

Modem_installation.exe to start installation. Moreover, in the course of installation, please do not disconnect the device;


3. After installation, restart the computer and click Run Icon to operate the procedure.
4. Users have to use the connection to USB interfaces with USB 2.0 version or higher.

3. Connect to the Internet

Set Up Connection

1. Click the button in the main window  open network interface, click  connect to the network.
2. If connection fails, please check APN setting. (Reference help file of customize the Internet Connection Configuration section).

Disconnection

Click the button of  in main window to disconnect the network.

4. Indicating Light

State of Terminal		LED#1	LED#2
Power OFF		OFF	OFF
Searching State		Orange - Flashing	—
Antenna Level	Level 5,4	Lighting	—
	Level 3	Flashing (75%ON)	—
	Level 2	Flashing (50%ON)	—
	Level 1 ,0	Flashing (25%ON)	—
	No Signal	Red - Flashing	OFF
PIN1	PIN1 Lock	OFF	Red (50%ON)
	PIN1 Input ready	OFF	Red (50%ON)
No SIM card inserted		OFF	Red - Lighting
Standby State	HSDPA/HSUPA	Blue	Blue - Flashing (25%ON)
	WCDMA	Purple	
Connecting State		OFF	Orange - Lighting
Connected State	LTE	Green	Blue – Lighting
	HSDPA/HSUPA	Blue	
	WCDMA	Purple	

5. Notes

1. If SMS sending fails, please confirm whether the number of SMS Center is correct or not.
2. If do not receive the SMS, please check whether the storage space of (U)SIM card is full or not.
3. The device will be brought about normal heat phenomena if used under the long-time working environment, weak signal or higher room temperature conditions, however, it does not affect the use and life of the device.
4. Please avoid contacting with the skin directly for a long time.
5. The device could be used with a separation distance of 1.0cm to the human body.
6. Please make sure the temperature for device will not be higher than 55 °C

FCC Regulations:

This device complies with part 15 of the FCC Rules. Operation is subject to the following two conditions: (1) This device may not cause harmful interference, and (2) this device must accept any interference received, including interference that may cause undesired operation.

This device has been tested and found to comply with the limits for a Class B digital device, pursuant to Part 15 of the FCC Rules. These limits are designed to provide reasonable protection against harmful interference in a residential installation. This equipment generates, uses and can radiated radio frequency energy and, if not installed and used in accordance with the instructions, may cause harmful interference to radio communications. However, there is no guarantee that interference will not occur in a particular installation. If this equipment does cause harmful interference to radio or television reception, which can be determined by turning the equipment off and on, the user is encouraged to try to correct the interference by one or more of the following measures:

- Reorient or relocate the receiving antenna.
- Increase the separation between the equipment and receiver.
- Connect the equipment into an outlet on a circuit different from that to which the receiver is connected.
- Consult the dealer or an experienced radio/TV technician for help.

Caution: Changes or modifications not expressly approved by the party responsible for compliance could void the user's authority to operate the equipment.

RF Exposure Information (SAR)

This device meets the government's requirements for exposure to radio waves. This device is designed and manufactured not to exceed the emission limits for exposure to radio frequency (RF) energy set by the Federal Communications Commission of the U.S. Government. The exposure standard for wireless device employs a unit of measurement known as the Specific Absorption Rate, or SAR. The SAR limit set by the FCC is 1.6W/kg. *Tests for SAR are conducted using standard operating positions accepted by the FCC with the device transmitting at its highest certified power level in all tested frequency bands. Although the SAR is determined at the highest certified power level, the actual SAR level of the device while operating can be well below the

maximum value. This is because the device is designed to operate at multiple power levels so as to use only the power required to reach the network. In general, the closer you are to a wireless base station antenna, the lower the power output. SAR compliance has been established in the host product(s) (laptop computers), tested at 5 mm separation distance to the human body, and tested with USB slot configurations including Horizontal-UP, Horizontal-Down, Vertical-Front, Vertical-Back. This device can be used in host product(s) with substantially similar physical dimensions, construction, and electrical and RF characteristics. The highest SAR value, tested per FCC RF exposure guidelines for USB dongle, as described in this user guide, is 1.12W/kg. The FCC has granted an Equipment Authorization for this device with all reported SAR levels evaluated as in compliance with the FCC RF exposure guidelines. SAR information on this device is on file with the FCC and can be found under the Display Grant section of www.fcc.gov/oet/ea/fccid after searching on FCC ID: **SLKUX302NC-R**.

6. Remark

For MAC OS or more detailed information of the product, please click <Help> file of the Setting Menu under the main window.