
F1040D

Android 6.0 is the Operating System for your Touch ScreenF1040D.

INTRODUCTION

Thanks for choosing *F1040D*, Dual SIM Android, 4G smart phone based on 1.1GHz Quad Core Processor. This smartphone is running on Android 6.0 OS. If you'd like your phone to live a long and fruitful life, please read this guide carefully and keep it for future reference. You never know when you might need it.

And don't worry if the pictures we use to demonstrate your phone's functions look a little different from what you see on its screen. It's the functions that matter.

Table of Contents

1	Safety	4
1.1	Safety Precautions.....	4
1.2	Using your phone safely	4
1.3	Charging the battery	6
1.4	Power ON/OFF.....	7
1.5	Enter Main Menu.....	7
1.6	Enter Sub Menu	7
1.7	Use Notification Panel.....	7
1.8	Change wallpapers	8
1.9	Recent tasks	8
1.10	Install APK through File Manager	8
1.11	The mouse function	8
2	Using your Phone	9
2.1	Main Menu & Its Functions.....	9
2.2	Wi-Fi.....	11
3	Inputting Text	12
4	Maintenance	13
5	Taking Care of your Device	13

1.1 Safety Precautions



Please read through the following briefings carefully and act in accordance with these rules, so as to prevent causing any danger or violating any law.

-
- - Use cell phone when the signal strength is good. Keep your calls short or instead use headset or send a text message. This advice applies especially to children, adolescents and pregnant women.
 - If you are using a Bluetooth headset device, please make sure it has a low power emitter.

ROHS Declaration

Declaration of Conformity with the requirements of the e-waste Management Rules, 2011 (adopted by Notification S.O. 1035 (E) of Ministry of Environment and Forests)

- The Product is in conformity with the requirements of Rule 13 of the e-waste Rules. The content of hazardous substance with the exemption of the applications listed in SCHEDULE II of the e-waste Rules:
 - a. Lead (Pb) – not over 0.1% by weight;
 - b. Cadmium (Cd) – not over 0.01% by weight;
 - c. Mercury (Hg) – not over 0.1% by weight;
 - d. Hexavalent chromium (Cr6+) – not over 0.1% by weight;
 - e. Polybrominated biphenyls (PBBs) – not over 0.1% by weight;
 - f. Polybrominated diphenyl ethers (PBDEs) – not over 0.1% by weight.

1.2 Using your phone safely



On The Road

Using a phone while driving is illegal in many countries. Please follow local laws and drive safely at all times.



Near Sensitive Electronics

Don't use your phone near sensitive electronic equipment – particularly medical devices such as pacemakers – as it could cause them to malfunction. It can also interfere with the operation of fire detectors and other automatic-control equipment.

For more information about how your phone affects pacemakers or other electronic equipment, please contact the manufacturer or your local distributor.

Your phone may cause interference when used near TVs, radios or automated office equipment.



While Flying

Your phone can cause interference with aircraft equipment. So it's essential you follow airline regulations. And if airline personnel ask you to switch off your phone, or disable its wireless functions, please do as they say.



In Hospital

Your phone may interfere with the normal operation of medical equipment. Follow all hospital regulations and turn it off when you're asked to by posted warnings or medical staff.



At a Petrol Station

Don't use your phone at petrol stations. In fact, it's always best to switch off whenever you're near fuels, chemicals or explosives.



Around Water

Keep your phone away from water (or any other liquid). It's not a waterproof model.



Making Repairs

Never take your phone apart. Please leave that to the professionals. Unauthorised repairs could break the terms of your warranty.



Broken Antenna

Don't use your phone if the antenna is damaged, as it could cause injury.



Around Children

Keep your mobile out of children's reach. It should never be used as a toy and it might not

be good for their health.



Original Accessories

Only use the original accessories supplied with your phone or those approved by the manufacturer. Using unapproved accessories may affect performance, make the warranty void, break national regulations on the use of mobile phones, or even cause injury.



Near Explosives

Turn off your phone in or near areas where explosive materials are used. Always obey local laws and turn off your phone when requested.



Emergency Calls

To make an emergency call your phone must be turned on and in an area where there's network coverage. Dial the national emergency number and press 'send'. Explain exactly where you are and don't hang up until help has arrived.



Working Temperature

The working temperature for the phone is between 0 Degree and 40 Degree Celcius. Please don't use the phone outside the range. Using the phone under too high or too low temperature might cause problems.



At very high volume, prolonged listening to a mobile phone can damage your hearing.

1.3 Charging the battery

The rechargeable Li-ion battery that comes with your phone is ready to be used, but is not charged full. It is easy to do & can be done in 3 simple steps below:

1. Connect the charger to your phone, and plug it into a socket.
2. The battery indicator in the corner of the screen will scroll to show you it's charging.

-
3. When fully charged, the battery indicator will stop scrolling.
 4. Disconnect the charger from your mobile, and unplug.

1.4 Power ON/OFF

Press the power key to power-ON/OFF the phone.

When you turn your phone on, it'll automatically check the SIM and show the following information on screen:

- **Input SIM PIN:** If you've set a PIN for your SIM.

Note:

The PIN is supplied with your SIM. Please replace it with your own PIN code as soon as possible. Enter the wrong PIN three times, and your SIM will be locked. Then you'll need to contact your network service provider to ask for a PUK code to unlock it.

1.5 Enter Main Menu

In Idle mode, click the Menu icon to enter the main menu on the desktop and click the Home key /Back key to return.

1.6 Enter Sub Menu

Once at the main menu, click the icon to select the submenu, press **Back Key** to return to the previous menu, and press the **Home Screen** to return to the home screen.

1.7 Use Notification Panel

As a new notification appears in the notification area, slide down in the area to view the contents of the notification. And slide down again, there is shortcut of some functions, about Bluetooth, Airplane mode, Flashlight, Do not disturb, Wi-Fi and many more

1.8 **Change wallpapers**

1. Go to settings-display-wallpaper.
2. Choose WALLPAPERS to change wallpapers

1.9 **Recent tasks**

Double click[**menu**]to access to the recent tasksinterface, view all the recent tasks.And long press back key to remove them.

1.10 **Install APK through File Manager**

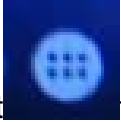
APK is a supported file format for the Android mobile operating system.

- a) Please copy the downloaded APK file into the SD card, and then insert the SD card into the phone.
- b) In Idle mode, click Main Menu to enter the main menu.
Click “File Manager” to enter the directory of SD card.
- c) Click the APK file you wish to install, and follow the installation wizard.

1.11 **The mouse function**

Long press left soft key to active/deactive the mouse function.When the mouse function is active,move the cursor to click OK key to select it.

2.1 Main Menu & Its Functions



Select  to enter the main menu.

Allows you to view a list of features available in your phone. Click * key and end key at the same time to show screen.

1. Browser

Browse the internet.

2. Calculator

This function can turn your phone into calculator, it can do some simple calculations.

3. Calendar

View the calendar & add events.

4. Camera

Allows you to click pictures & video anytime you want. Camera opens in capture mode. Frame your picture within the screen and hold the phone steady. Move the cursor to click camera button to capture. Press up and down key to switch front and rear camera. Open one picture to share (via a compatible application), edit a picture, or delete a picture

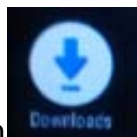
5. Clock

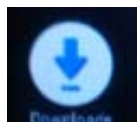
After entering Clock, move cursor to set Alarm.

6. Contacts

To see your list of Contacts. Access phonebook through this function.

7. Downloads



In main menu, touch  to enter, you can view the downloaded files or

applications.

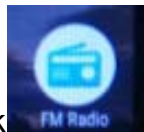
8.Email


Set up a common email, manage your email

9.File Manager

You could install the files in APK format & also view your files.

10.FM Radio



In main menu, click  to enter FM Radio interface, Through this program, you may listen to FM radio on the device, FM radio use the wired headset as an antenna to receive signals, before opening this program ,you can install the original equipment-headphones, when listening, you can switch it manually to speakers or the mode with wired headphones.

11.Gallery

Allows you to view photos & videos in folders.

12.Messaging

Allow you to view messages sent & received as a thread.

13.Music

View the list of songs available in your phone. Your music files are classified according to the following four categories: Artists, albums, songs and play lists. Click one of these categories; you can view the list inside.

14.Videos

View the list of videos available in your phone to play them.

15.Phone

Allow you to make quick outgoing calls.

16.Settings

Modify settings under the following:

- Wi-Fi
- Bluetooth

-
- SIM cards
 - More
 - Display
 - Sound & notifications
 - Apps
 - Storage& USB
 - Battery
 - Memory
 - Security
 - Accounts
 - Language & input
 - Backup&reset
 - Date &time
 - Schedule power on/off
 - About phone

17.SIM Toolkit

This service is provided by the operator. It provides many types of personalized message services.

18.Sound Recorder

Allows you to record sounds.

19.Other apps

Enter Peru,Enterplay,WhatsApp

2.2 Wi-Fi

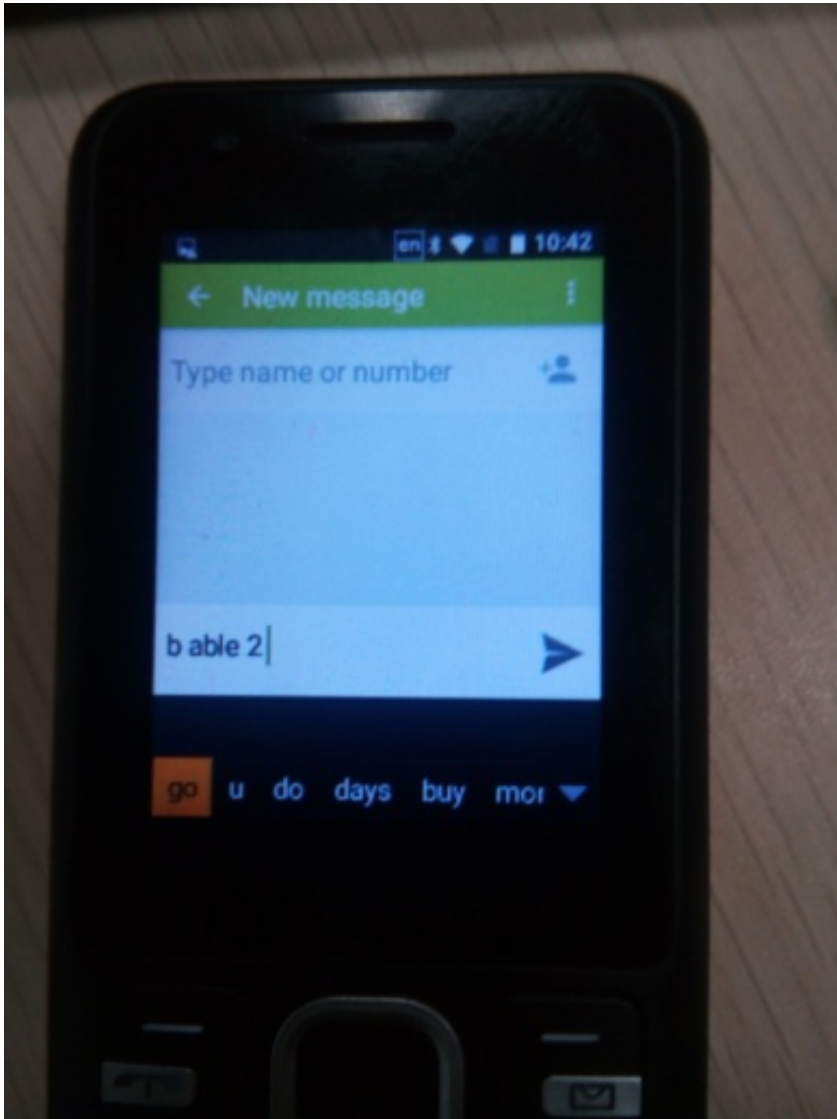
F1040D supports Wi-Fi which allows you to connect with a Wireless connection. This is useful for surfing internet on phone.

Enter "Settings" interface & search WIRELESS & NETWORKS. Select the network you want to connect.

3 *Inputting Text*

GoogleKeyboard

F1040Duse MiT9Keyboard by default.



Use * key to input symbols and # key to switch input method.

4 ***Maintenance***

Use a dry soft cloth to wipe general dirt.

Do not use a hard cloth, benzene or thinner to wipe the phone, otherwise, the surface of the phone will be scratched or could even result in the fading of colour.

5 ***Taking Care of your Device***

Your device is a product of superior design and craftsmanship and should be handled with care: The following suggestions will help you protect your phone:

- Always keep the small parts of the phone away from children.
- Keep the device dry. Precipitation, humidity, and all types of liquids or moisture can contain minerals that will rust electronic circuits. If your device does get wet, remove the battery, and allow the device to dry completely before replacing it.
- Do not use or store the device in dusty, dirty areas. Its moving parts and electronic components can be damaged.
- Do not store the device in high or cold temperature. High temperatures can shorten the life of electronic devices and damage batteries.
- Do not attempt to open the device other than as instructed in this guide.
- Do not drop, knock, or shake the device. Rough handling can break internal circuit boards and fine mechanics.
- Do not use harsh chemicals, cleaning solvents, or strong detergents to clean the device. Only use a soft, clean, dry cloth to clean the surface of the device.
- Do not paint the device. Paint can clog the moving parts and prevent proper operation.
- Use indoor chargers.

-
- FCC Caution:
 - Any Changes or modifications not expressly approved by the party responsible for compliance could void the user's authority to operate the equipment.
 - This device complies with part 15 of the FCC Rules. Operation is subject to the following two conditions: (1) This device may not cause harmful interference, and (2) this device must accept any interference received, including interference that may cause undesired operation.
 - Note: This equipment has been tested and found to comply with the limits for a Class B digital device, pursuant to part 15 of the FCC Rules. These limits are designed to provide reasonable protection against harmful interference in a residential installation. This equipment generates, uses and can radiate radio frequency energy and, if not installed and used in accordance with the instructions, may cause harmful interference to radio communications. However, there is no guarantee that interference will not occur in a particular installation. If this equipment does cause harmful interference to radio or television reception, which can be determined by turning the equipment off and on, the user is encouraged to try to correct the interference by one or more of the following measures:
 - —Reorient or relocate the receiving antenna.
 - —Increase the separation between the equipment and receiver.
 - —Connect the equipment into an outlet on a circuit different from that to which the receiver is connected.
 - —Consult the dealer or an experienced radio/TV technician for help.
 - Specific Absorption Rate (SAR) information
 - SAR tests are conducted using standard operating positions accepted by the FCC with the phone transmitting at its highest certified power level in all tested frequency bands, although the SAR is determined at the highest certified power level, the actual SAR level of the phone while operating can be well below the maximum value. Before a new model phone is available for sale to the public, it must be tested and certified to the FCC that it does not exceed the exposure limit established by the FCC, tests for each phone are performed in positions and locations as required by the FCC.
 - For body worn operation, this F1040D phone has been tested and meets the FCC RF exposure guidelines when used with an accessory designated for this product or when used with an accessory that contains no metal and that positions the handset a minimum of 10mm the body.
 - Non-compliance with the above restrictions may result in violation of RF exposure guidelines