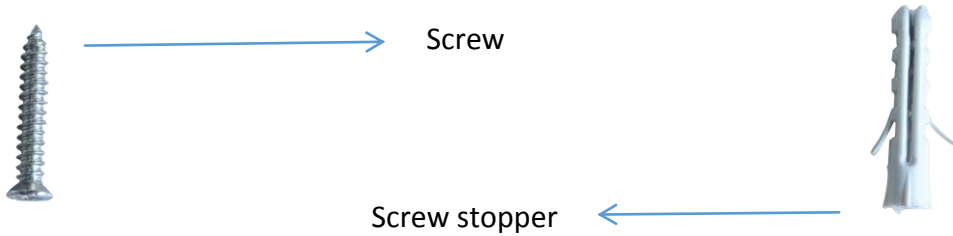
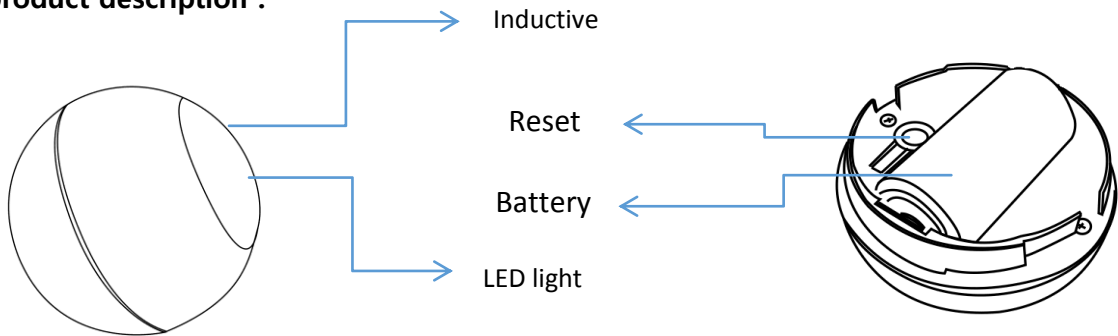


WiFi Motion Sensor instructions

Configuration and installation

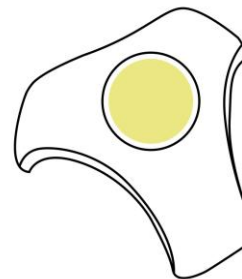
product description :



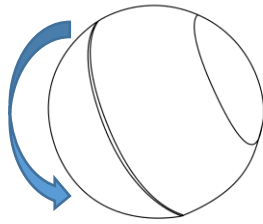
Holder Installation:

1. Fix the holder with screws and screw stopper adhesive

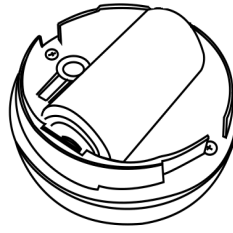
2. Fix the holder with double-sided



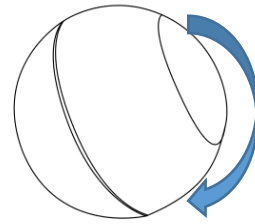
Battery installation:



Open the PIR



Install the battery



Close the PIR

Specification

Reset:

(1) Press the reset button for 6 seconds till the indicator flash rapidly. Then device turns to smart wifi mode.

(2) Press the reset button again for 6 seconds till the indicator flash slowly. The device turns to AP mode.

Battery: CR123A-3V X 1

Standby current: 13uA

Operate current: 120mA-130mA

Standby time: 5 years

Operate time: 1 year (13 times/day); 2 years (6 times/day)

Wireless type: 2.4GHz

Protocol: IEEE 802.11b/g/n

Wireless range: 45m

Sensitive distance: 6M

Operating temperature: 0°C ~ 40°C (32°F ~ 104°F)

Operating humidity: 20% ~ 85%

Storage temperature: 0°C ~ 60°C (32°F ~ 140°F)

Storage humidity: 0% ~ 90%

Size: 45mm x 45mm x 45mm

48mm x 48mm x 48mm (Add the base)

Certification: RoHS, FCC, CE,



NOTE: This equipment has been tested and found to comply with the limits for a Class B digital device, pursuant to part 15 of the FCC Rules. These limits are designed to provide reasonable protection against harmful interference in a residential installation. This equipment generates uses and can radiate radio frequency energy and, if not installed and used in accordance with the instructions, may cause harmful interference to radio communications. However, there is no guarantee that interference will not occur in a particular installation. If this equipment does cause harmful interference to radio or television reception, which can be determined by turning the equipment off and on, the user is encouraged to try to correct the interference by one or more of the following measures:

- Reorient or relocate the receiving antenna.
- Increase the separation between the equipment and receiver.
- Connect the equipment into an outlet on a circuit different from that to which the receiver is connected.
- Consult the dealer or an experienced radio/TV technician for help

Changes or modifications not expressly approved by the party responsible for compliance

could void the user's authority to operate the equipment.

This device complies with Part 15 of the FCC Rules. Operation is subject to the following two conditions:

- (1) this device may not cause harmful interference, and
- (2) this device must accept any interference received, including interference that may cause undesired operation.

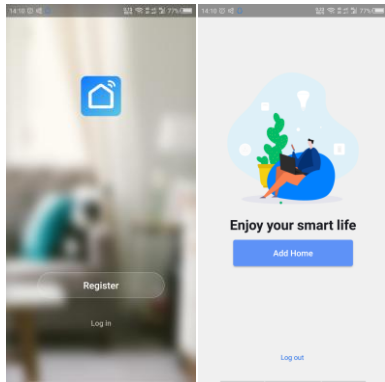
APP Download

1) Android phone:Download"Smart life" from Google play store;IOS device:Download"Smart life" from APP store.

2) Scan QR code bellow to install.



1) .Register and login .



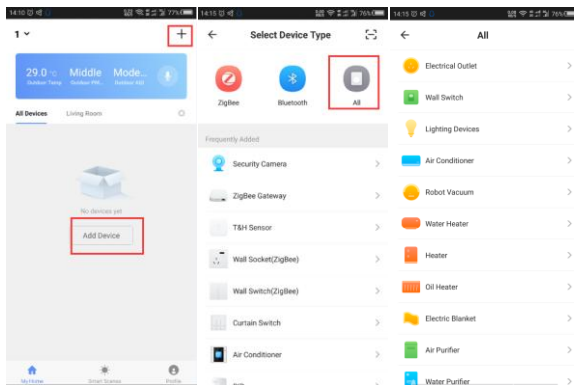
Adding device

The default is Smart Wi-Fi mode as the device is power-up(the indicator light flashes quickly); If the indicator light shows an exception, pls press the reset button for 6s, forced reset into smart wifi mode; Press reset button again for 6s to change AP mode.(the indicator light flash slowly)

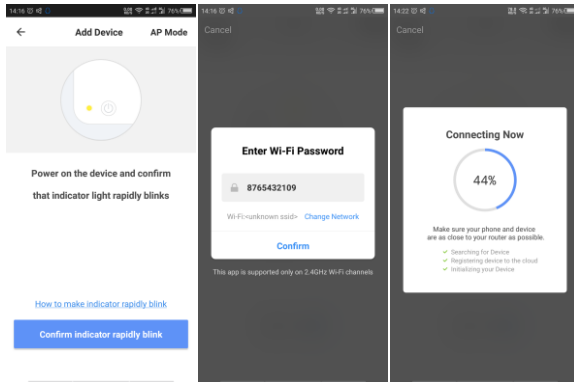
The configuration mode will last for 2 minutes, after 2 minutes, the light goes off and the device goes into sleep mode. The user needs to long press reset button to wake up the device before adding it again.

1. Select the item you want to add, use Smart Wi-Fi or AP model

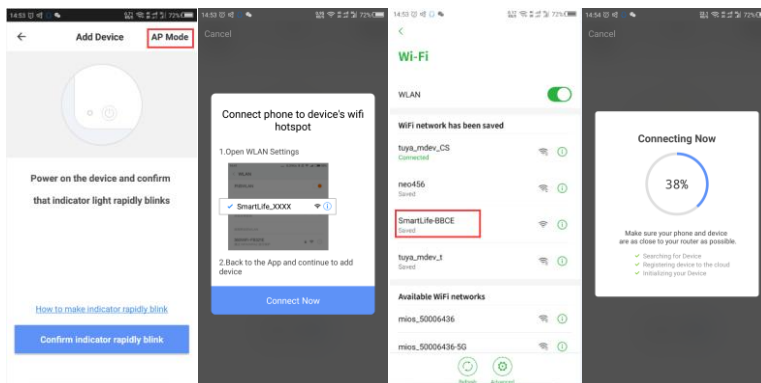
Note: The device currently supports 2.4G wifi signals.



(1) Smart wifi mode, or follow the app instructions



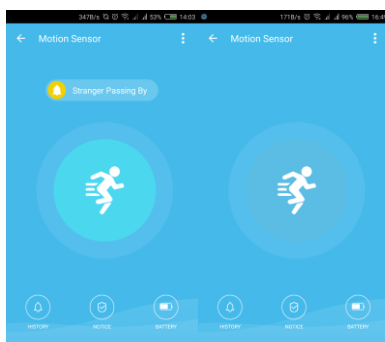
(1) AP compatible mode: In smart wifi mode, press reset button for 6 seconds, indicator flash slowly. (The next step can be performed in accordance with the app prompt.)



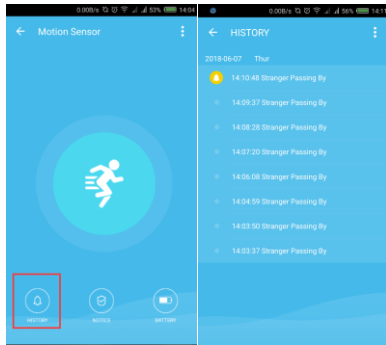
Main functions, operate status and record settings

1. Operate status, alarm | normal (device react time gap is about 1 minute, means device can only be triggered once in 1 minute)

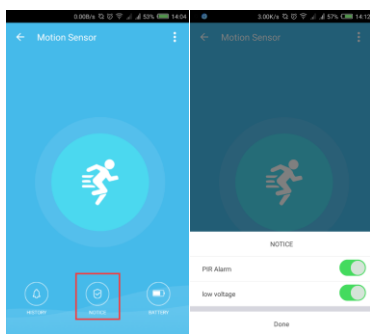
It takes 3-5 seconds to receive the push notification after the device triggers.



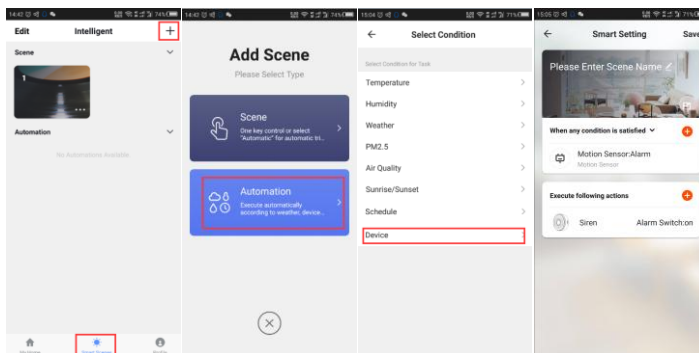
2. Alarm record



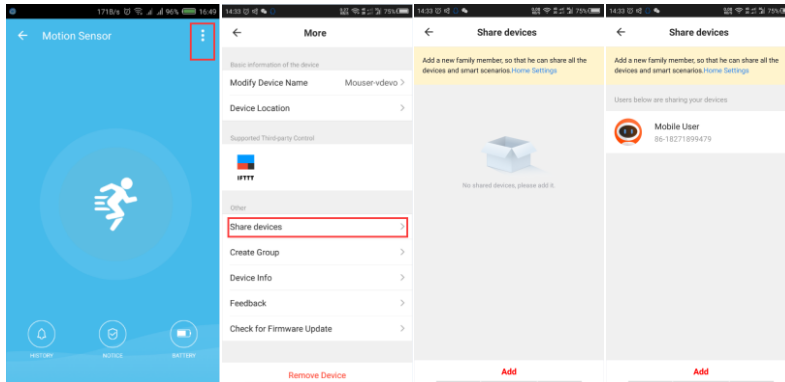
3. Turn on and turn off the alarm (no any alarm push notification, only alarm record)



4. Linkage setting: connect 2 devices via scene setting.

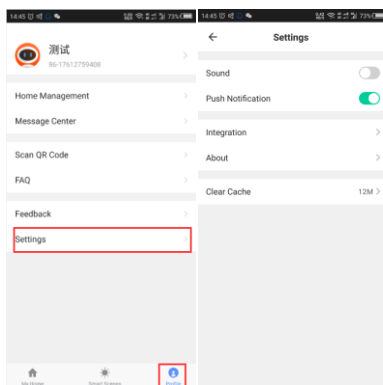


5. Device sharing: other people can control the device without adding it (Note: you can delete the share by pressing "shared account" for a long time)

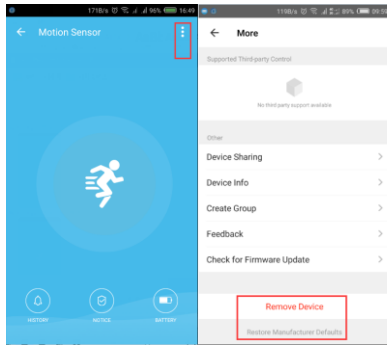


Other function:

1..Sound of APP push notification and operate(Background push requires user to give the App corresponding permission)



2.Reset again:(take out the battery and then install it,wait for about 10-20 seconds to add device again,if device reset failed)



3.indicator

Device Status	Indicator Status
Smart wifi	Flicker twice a second
AP compatibility mode	Flicker about every two seconds
Trigger status	Indicator lights flicker two times
suspend mode	Indicator is off
Reset	Indicator lights up for 4s and after 2 seconds lights off, device goes into configuration mode