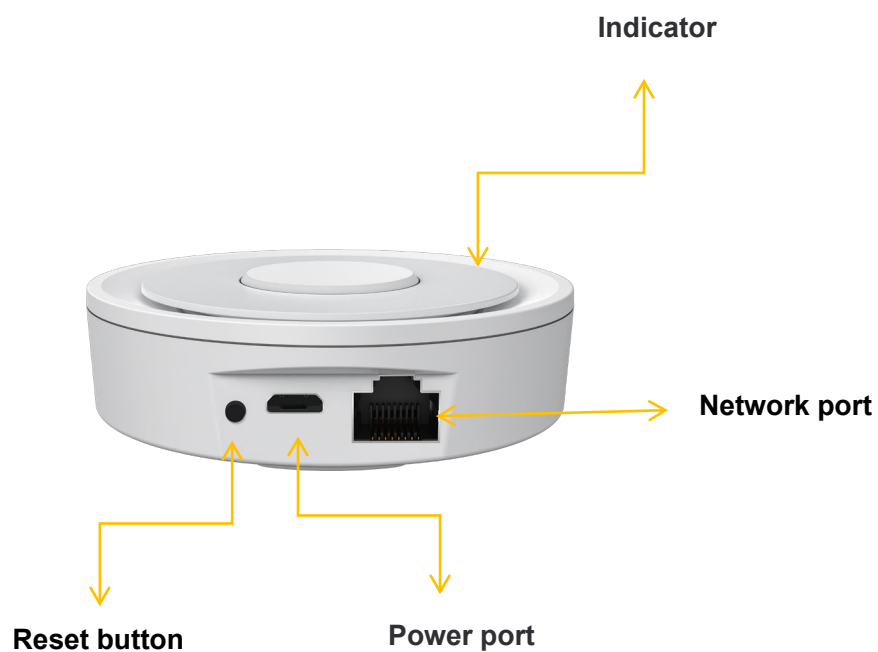




Zigbee Wired Gateway User Manual

Product configuration





This equipment has been tested and found to comply with the limits for a Class B digital device, pursuant to part 15 of the FCC rules. These limits are designed to provide reasonable protection against harmful interference in a residential installation. This equipment generates, uses and can radiate radio frequency energy and, if not installed and used in accordance with the instructions, may cause harmful interference to radio communications. However, there is no guarantee that interference will not occur in a particular installation. If this equipment does cause harmful interference to radio or television reception, which can be determined by turning the equipment off and on, the user is encouraged to try to correct the interference by one or more of the following measures:

- Reorient or relocate the receiving antenna.
- Increase the separation between the equipment and receiver.
- Connect the equipment into an outlet on a circuit different from that to which the receiver is connected.
- Consult the dealer or an experienced radio/TV technician for help.

To assure continued compliance, any changes or modifications not expressly approved by the party.

Responsible for compliance could void the user's authority to operate this equipment. (Example- use only shielded interface cables when connecting to computer or peripheral devices).

This equipment complies with Part 15 of the FCC Rules. Operation is subject to the following two conditions:

- (1) This device may not cause harmful interference, and
- (2) This device must accept any interference received, including interference that may cause undesired operation.

FCC Radiation Exposure Statement:

The equipment complies with FCC Radiation exposure limits set forth for uncontrolled environment. This equipment should be installed and operated with minimum distance 20cm between the radiator and your body.

Basic Parameters

Device name: Zigbee Wired Gateway
Product model: NAS-ZW05W6
USB power: 5V/1A
Working temperature: 0-55
Working humidity: 10%-90%RU
Storage temperature: 0-55
Storage humidity: 10%-90%RU
Network protocol: Zigbee IEEE 802.15.4
Frequency band: 2.4~2.485GHz
Maximum output power: 8dBm
Network topology: support star, tree, mesh network
Firmware upgrade: OTA Support
WAN:1 10 / 100M Ethernet ports (RJ45 Interface)

LED status

Device status	LED display status
Configuration mode	Indicator often bright
Reset	Hold press the reset button for more than 6s

Note:

1. Please reset the device before you add it;
2. No quantity limits to add the device.
3. The phone and gateway have to connect network with same router before adding the device;

Product Function

3.1 Zigbee Gateway

Support Zigbee 3.0 protocol to add Zigbee subsystem;

3.2 Network settings

1. Power on the zigbee wired gateway;

2. Confirm configuration indicator on;
3. Ensure your phone connect with home 2.4GHz frequency band router, meanwhile the phone and gateway are in same LAN;
4. Enter APP home page, click the button "+" in the top right corner of the page;
5. Clicks "Other" on the left side of the page to select the zigbee gateway according to the icon;
6. Access the network as per prompt;
7. Added successfully, devices can be found in the "My Home" list.

Restore the factory settings:

Hold Press the button (key time> 6 seconds), the distribution network indicator light becomes often bright;

3.3 Firmware upgrade

Support for remote automatic upgrade and App selection upgrade;

3.4 Control panel

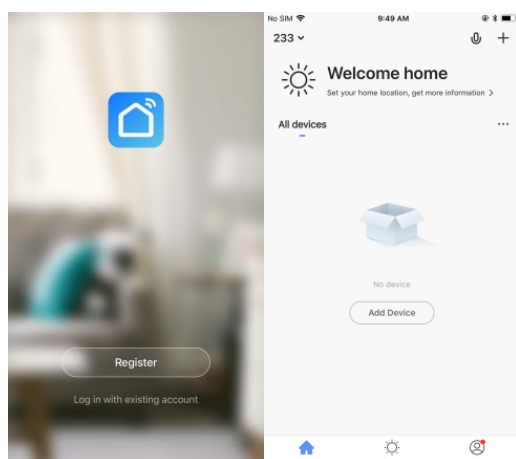
Universal public version gateway panel;

Download the APP

- 1.Android system: Download "Smart Life"App on Google play for free.
- 2.IOS system: Download "Smart Life"App on Apple store for free.

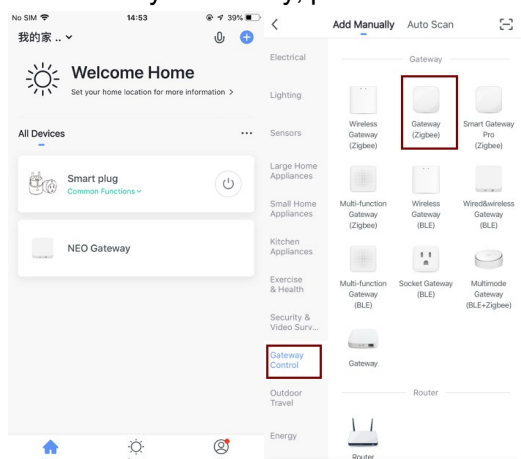


- 3.Launch the "Smart life" app. Register and login
To register,enter your mobile phone number or email address,create a password ,then login to the app.
Login if you have an account already.

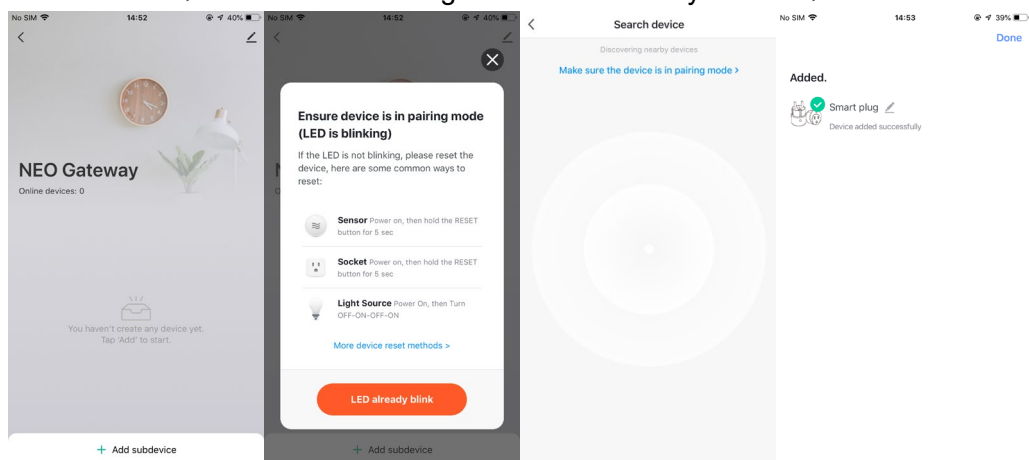


Add Device

1. Add Tuya Gateway; pls follow user manual(distinguish between wired and wireless) ;

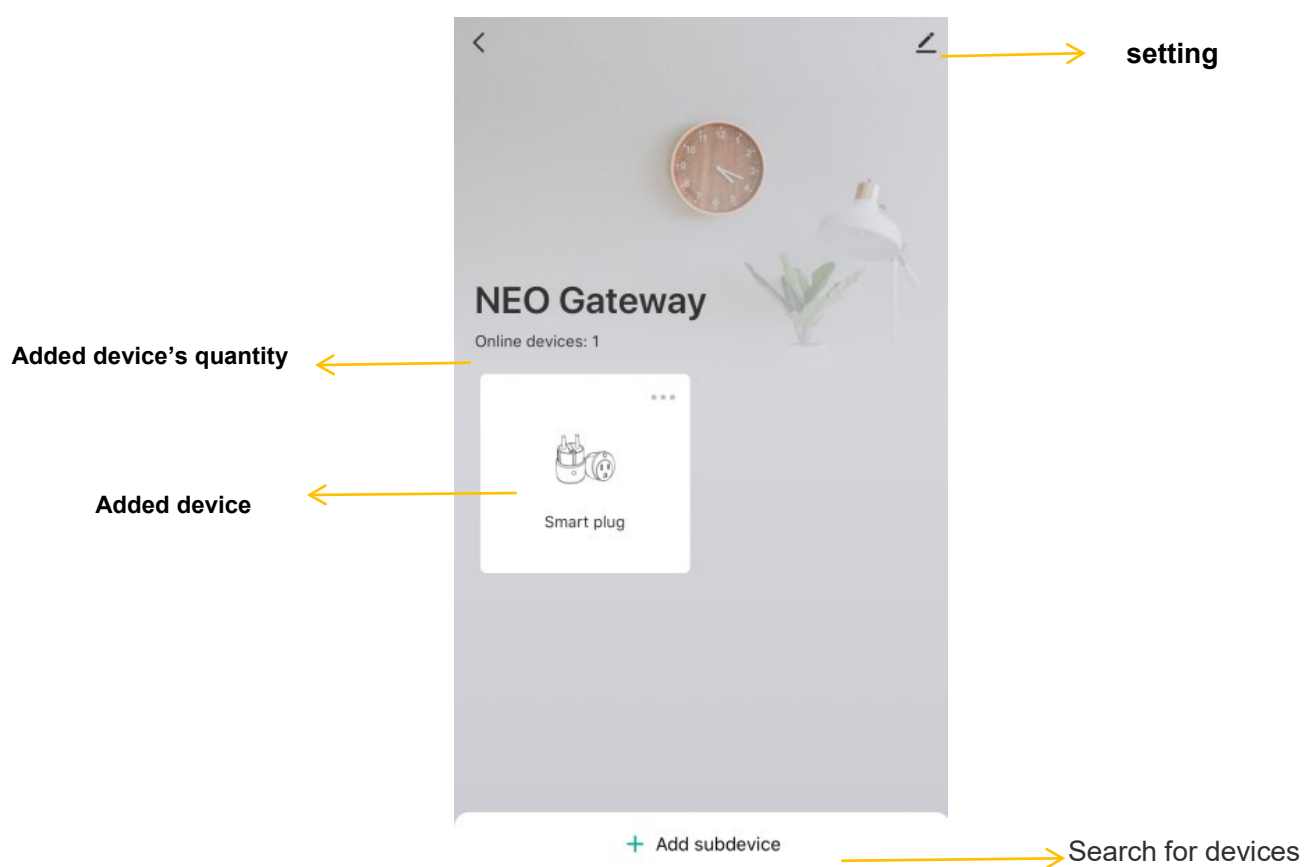


2. Add device; Please reset the zigbee device before you add it;



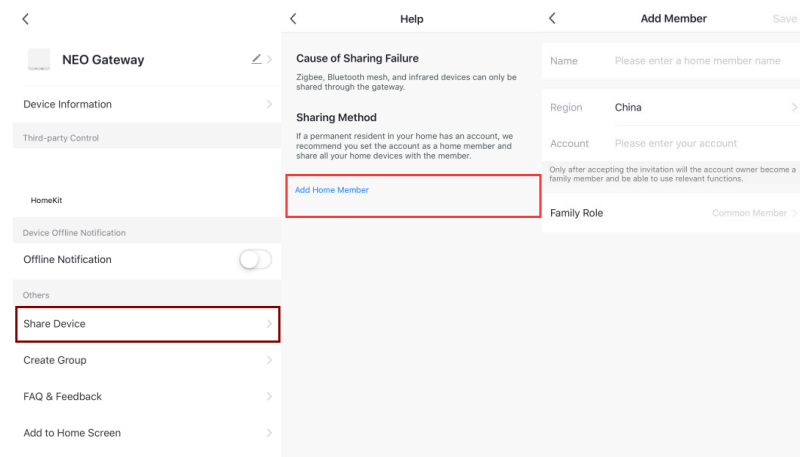
Main function, working state and record setting

1. APP main interface



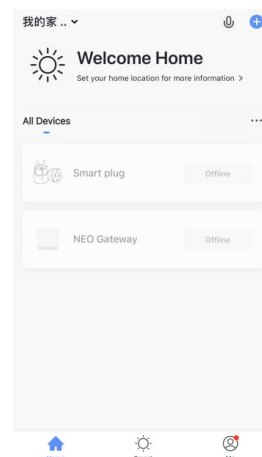
Other function

1.Shared Device

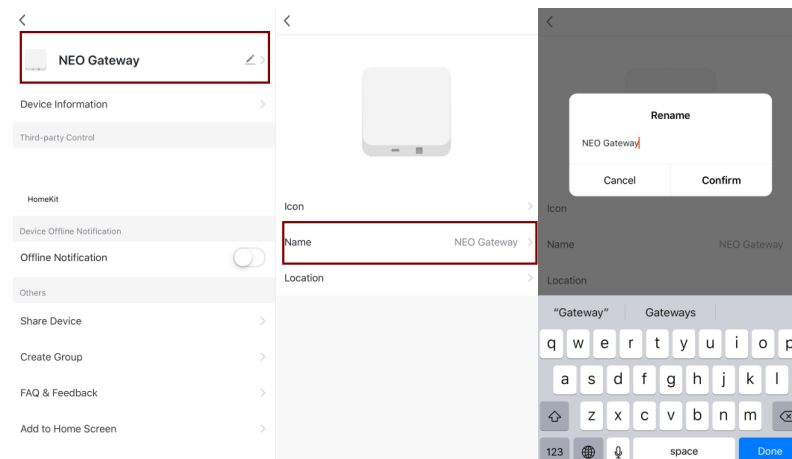


2.Device offline;

if the device disconnected power, you will see your device is offline on app.



3.Rename



4.Wipe data:

Remove device by APP, then add device again. the history will be deleted.

