
IP Camera User Manual

(For Windows OS)



A new generation of P2P IP camera adapts a groundbreaking P2P technology of new generation. The easy-setup, high quality camera delivers crystal clear surveillance video to your smartphone or PC. You can remotely control it from anywhere, anytime, and receive alerts to your smartphone or email address when motion is detected. You can also upload recorded video to your FTP server.

1. Hardware Installation

1) Connect the power adapter, Connect IP Camera with router, Check if the Power indicator (Yellow) and Network indicator (Green) ok or not. (As picture 1 shown)



Power Light: always on when the power on

I / O interface: connect infrared sensors / alarm ect

Network light: always flash when data transfers

Power supply: connect DC 5V power

Network Cable interface: Connect the router / switch

SD card slot: insert SD memory card

WIFI antenna: receive wireless signal

Audio Output: connect external speaker

2)Router Connection Diagram (Picture 2)

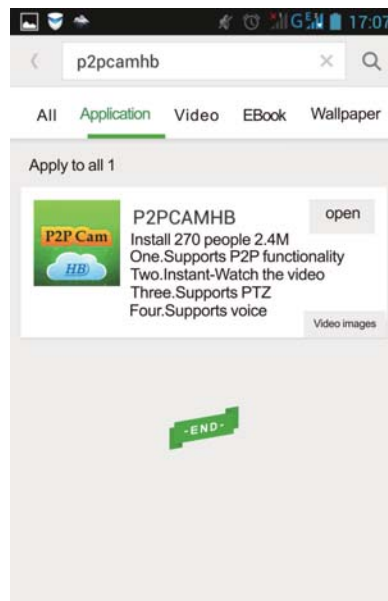


Note: Use the matched power adapters of the camera to avoid damage to the camera.

Tip: If you need to restore the factory settings, find the restore button at the bottom of the camera, hold 10 seconds when the power is on. Or restore it via software.

3.View via Android mobile phone

a. Users can Google shop, pea pods, 91 Assistant search key "P2PCAMHB" to download and install

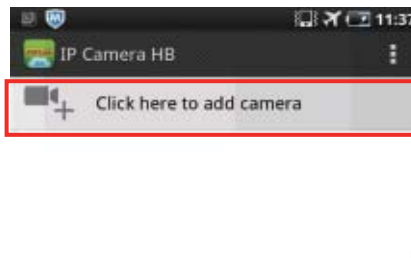


b..Find the CD-ROM from the box and open the Android mobile client, the file name : " ip_cam_HB_1.1.9.8.apk "



Open software

(Pictures 3)



(Pictures 4)



(Pictures 5)



(Pictures6)

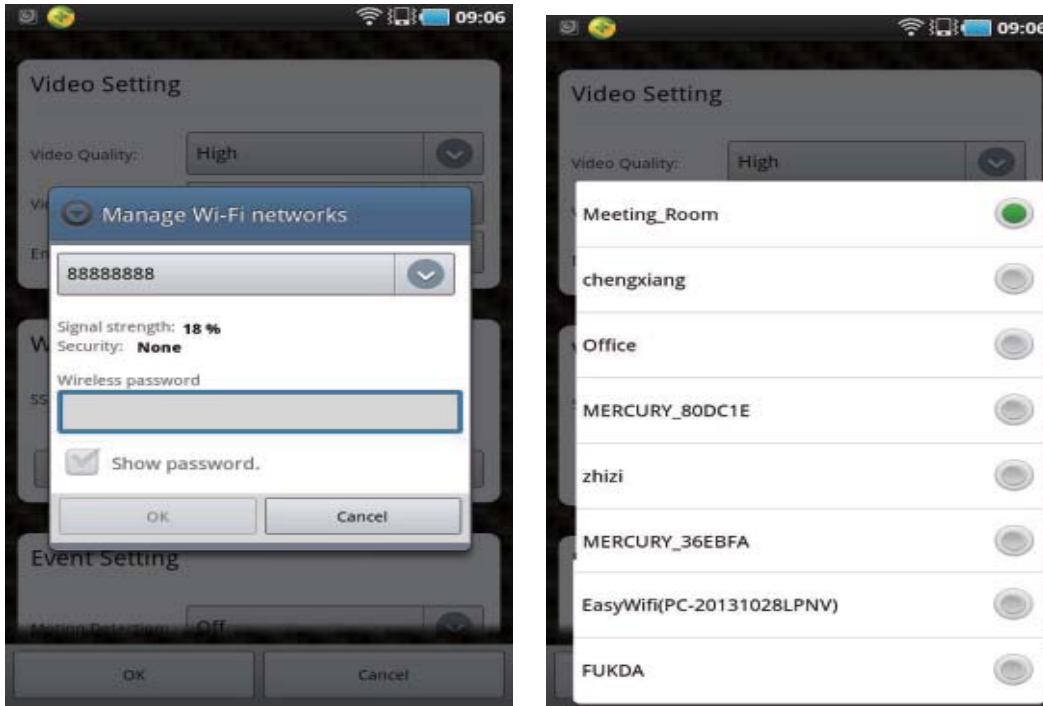
Way 1: (Pictures 4)Click Search LAN, user can search and add cameras in one LAN,if the cameras and phones are not in one LAN,then cameras won't be searched.

Way 2: (Pictures 5) Input the UID on the "Device ID" of the APP. The default username is: admin.No password.Note:the "Device ID" is on the bottom of the ip cameras.

Way 3: In (Pictures 6), Click " Scan QRCode" on the housing of IP camera.It will find and add the ID automatically,Then click to finish.

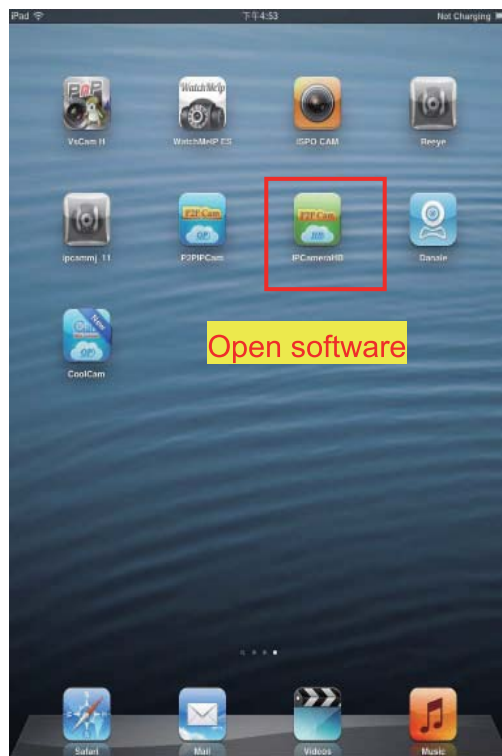
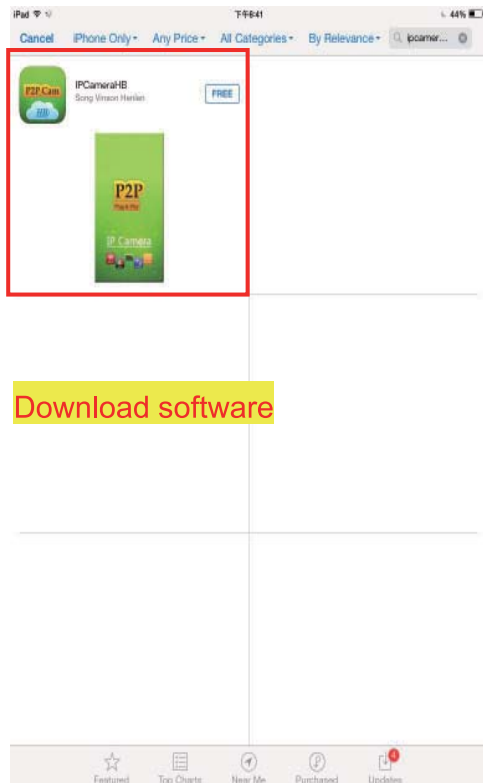
4.WIFI settings

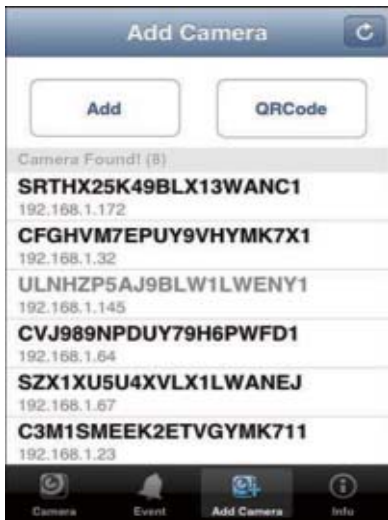
Click the drop-down box routing device, select To the router, enter the wireless password, click OK, and restart the camera to be connected to the camera unplugged network cable, you can use the wireless.



5.View via iphone

IPhone APP: Search the keywords "IPCameraHB" in Apple store, download and install it.





(Picture 9)



(Pictur10)



(Picture 11)

Way 1(Picture 9): Click Search LAN, user can search and add cameras in one LAN,if the cameras and phones are not in one LAN,then cameras won't be searched.

Way 2(Picture 10): Input the ID into the UID column. The default user name is admin, default password is blank.

Way 3(Picture 11):Click " Scan QRCode" Scan the QR Code on the housing of IP camera.It will find and add the ID automatically,Then click to finish.

6.WIFI Settings

Click the WIFI button in Parameter settings and search WIFI nearby. Input password after finding the Router. During the camera rebooting, unpin the net cable. After the restarting finished, the user can use WIFI.



7.View via PC

1).Add camera



(Picture 12)



(Picture 13)




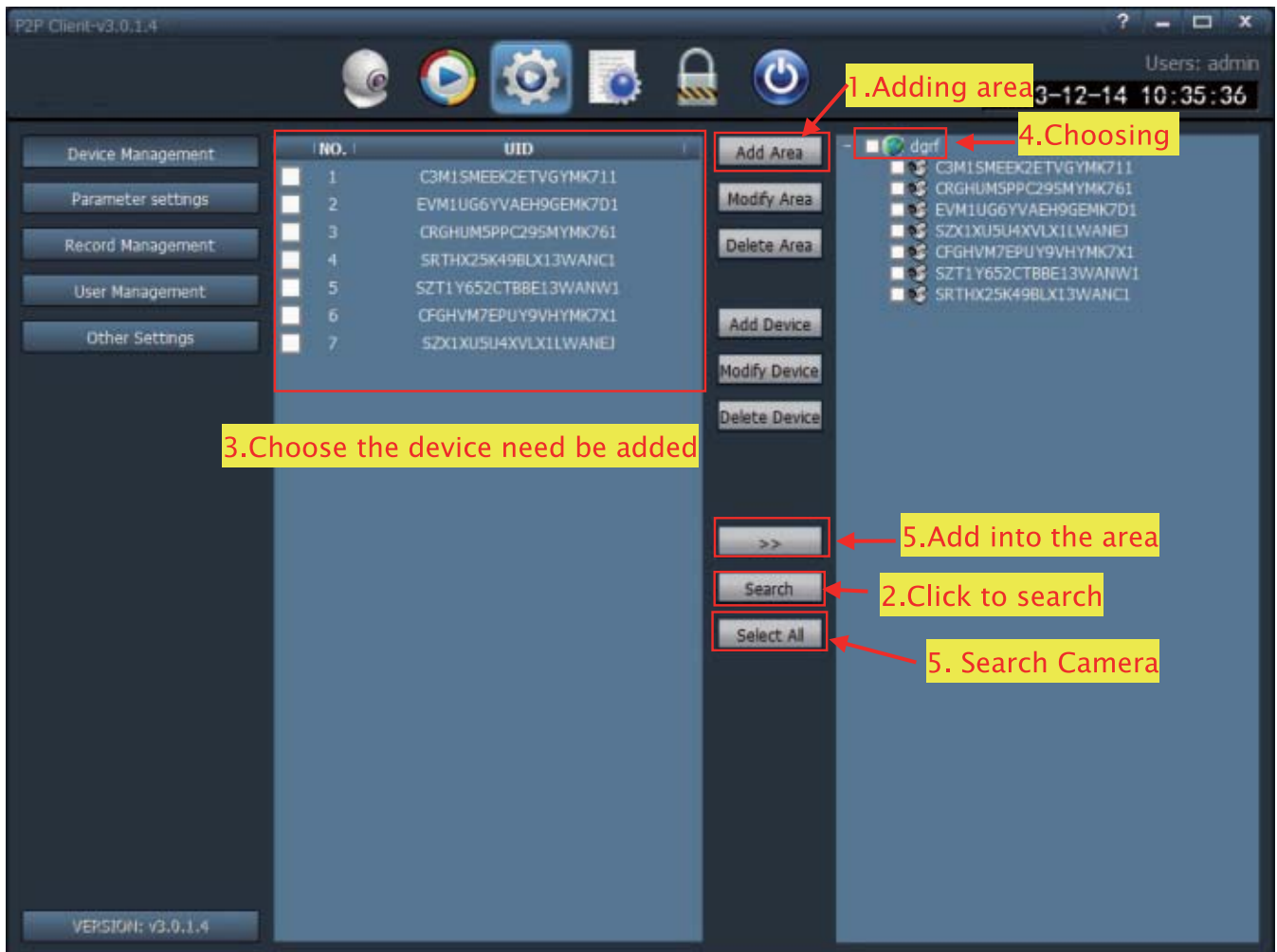
(Picture 14)



(Picture 15)

2) Find p2pclient.exe file in the CD which come with camera, and install it in computer or laptops ect ,and it will show the icon (picture 22) on the desktop after finished.

3) Run the software, click  (Figure 14)



7.1 Remote access video camera

Click the button , then it shown as below:

Add Device [X]

UID: Input the device


Name: User-defined name

Password: Input the password

Area: Choose the area

[OK] [Cancel]

7.3 Monitor interface

After you add a camera click  ((Picture 15))

P2P Client-v3.0.1.4 Users: none
2013-12-18 09:23:34

List

- dgrf
 - 1-C3M1SMEEK2ETVG711
 - 2-CRGHUM5PPC295MYMK761
 - 3-SZX1XU5U4XVLX1LWANEJ
 - 4-CFGHVM7EPUY9VHYMK7X1
- Current Screen
 - 1-C3M1SMEEK2ETVG711
 - 2-CRGHUM5PPC295MYMK761
 - 3-SZX1XU5U4XVLX1LWANEJ
 - 4-CFGHVM7EPUY9VHYMK7X1

C3M1SMEEK2ETVG711





SZX1XU5U4XVLX1LWANEJ



CFGHVM7EPUY9VHYMK7X1



PTZ

← ↑ → ↓

↺ ↻ ↻ ↻ ↻ ↻

PRESET

Source	Time	Event
CFGHVM7EPUY9VHYMK7X1	13-12-18 09:23:09	Connect Success!
SZX1XU5U4XVLX1LWANEJ	13-12-18 09:23:09	Connect Success!
C3M1SMEEK2ETVG711	13-12-18 09:23:09	Connect Success!

This equipment has been tested and found to comply with the limits for a Class B digital device, pursuant to part 15 of the FCC Rules. These limits are designed to provide reasonable protection against harmful interference in a residential installation. This equipment generates, uses and can radiate radio frequency energy and, if not installed and used in accordance with the instructions, may cause harmful interference to radio communications. However, there is no guarantee that interference will not occur in a particular installation. If this equipment does cause harmful interference to radio or television reception, which can be determined by turning the equipment off and on, the user is encouraged to try to correct the interference by one or more of the following measures:

- Reorient or relocate the receiving antenna.
- Increase the separation between the equipment and receiver.
- Connect the equipment into an outlet on a circuit different from that to which the receiver is connected.
- Consult the dealer or an experienced radio/TV technician for help.

Caution: Any changes or modifications to this device not explicitly approved by manufacturer could void your authority to operate this equipment.

This device complies with part 15 of the FCC Rules. Operation is subject to the following two conditions: (1) This device may not cause harmful interference, and (2) this device must accept any interference received, including interference that may cause undesired operation.