

## Contents

Please, read e-CAM manual before use

1. Introduction to Product
  - 1-1. Feature of e-CAM
  - 1-2. Product Standard
  - 1-3. Product Construction
  - 1-4. Names in each part of Camera and Its using method
  
2. Software Installation and Removal
  - 2-1. e-CAM Software Installation (a)
  - 2-2. e-CAM Software Installation (b)
  - 2-3. e-CAM Software Removal
  - 2-4. Bundle Software Installation
    - ixla photo
    - ixla explorer
    - Netmeeting
  - 2-5. Performing the Program
  
3. e-CAM Program Usage
  - 3-1. Main Picture and Icon Explanation
  - 3-2. Explanation of Main Function for Icon
  
4. Introducing Bundle Programs
  - ixla photo
  - ixla explorer
  - Netmeeting
  
5. Solving the Problems (Maintenance)

## Attention lists

Please, read manual guide before practice.

Please, do not put camera in the water or liquid.

Please, do not repair, disassemble, or remodel the product without manual guide.

Please, disconnect the USB cable if you do not use e-CAM camera for a long time.

Please, do not touch a lens with your fingers, and always keep clean conditions.

Remember, the service period is one year.

## PC minimum installation requirements

133MHz pentium exchangeable PC

PC with USB port

32MB memory / 64MB recommended

Windows 98, Windows 2000

Free space for over 100MB hard disc

CD-ROM drive

Modem with over 33.6 kbps, or Network card

Sound card, microphone, and speaker

## Guide for USB Camera

Netpower Co., LTD : Home page <http://www.netpwr.co.kr>

E - mail [webmaster@netpwr.co.kr](mailto:webmaster@netpwr.co.kr)

## Guide for ixla software products

Hanil Information and Communication CO.,LTD. : Home page <http://www.ixla.co.kr/>

E - mail <mailto:ixla@hanil.co.kr>

1. This manual is protected by copyright law so that you cannot copy this manual without permission from NETPOWER CO., LTD.
2. e-CAM is a USB PC camera registered trademark of NETPOWER.
3. Information in this manual is subject to change without notice not only to add function, but also to improve quality of the product.
4. ixla products are bundle software for a USB Camera provided through Hanil Information and Communication Co.
5. NetMeeting is a registered trademark of Microsoft Co., and supplied under the proof of supply license.

# 1. Introduction to Product

e-CAM is Full Digital USB PC Camera which has large scale functions possibly applicable to all realms about screen communication by using internet and PC, and is a comfortable folder style USB camera in both notebook and desktop computer.

e-CAM has a function that captures screen chatting, paused screen, and video screen. In addition to these features, there is electronic picture album which is able to edit captured pictures, software of image viewer which is able to watch simultaneously video-mail and picture on screen. Please, read this manual carefully and experience high quality internet culture by using these multi-program.

## 1-1. Characteristics of e-CAM

The Product is in a folder style so that carrying is simple and convenient, and also useful for notebook and desktop.

Comfortable internet PC Camera in video chatting and communication through screen.

Convenience in recording, playing, and capturing the image, and sending video e-mail is easy and simple.

It provides multi-screen process function for electronic picture album and home page building.

Video camera to replay mobile screen picture for naturalness.

Maximum 664\*492(330,000 pixel) high screen quality color digital USB PC camera.

Plug and play to simply attach to computer having USB.

## 1-2. Application of Product

Image sensor	1/3 " CMOS image sensor
Resolution	330,000 pixel : 664(H) x 492(V)
Interface	USB
Minimum illumination	2.5 Lux
AGC/ELC	Automatic
White balance	Automatic
Frame rate	QCIF (176 X 144), CIF (352 X 288), VGA (640 X 480)
S/N ratio	over 48dB
Lens	F=1.8 f=5.8mm
Exposure	Automatic

### 1-3. Composition of Product

The packing box of e-CAM includes such as

e-CAM Digital USB PC Camera	:	1 ea
e-CAM installation CD	:	1 ea
Mini Type USB Connecting Cable	:	1 ea
Installation Manual	:	1 ea

e-CAM installation CD

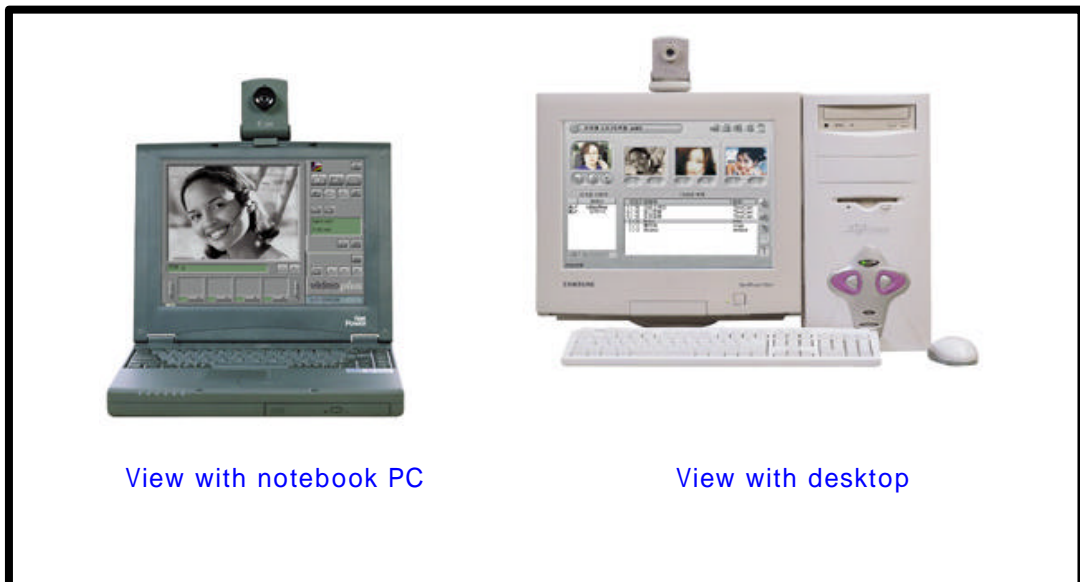
e-CAM installation program

Bundle software

- ixla photo
- ixla explorer
- NetMeeting 3.01

### 1-4. Names in each parts of Camera and Its using method

Constructed feature of camera



## Explanation of each parts of Camera



### Snapshot button

- After PC power switch on, camera will work
- After camera works, press this button to capture a still image.

### LED light

If camera is connected to PC, this LED lights up.

### Lens & focus Mask

This adjusts the focus on the screen. To adjust the focus, point the lens at your subject and then rotate the ring.

### Notebook clip for PC

Using this clip located between camera main body( ) and base ( ), you can simply install to the monitor of the notebook PC.

### Camera base

This serves the purpose of preventing the camera from falling down and protecting the lens while carrying.

### Camera main body

Main electron parts are located in this area.

## Folding features of camera



Reference : Depending on the circumstances of this company, the external appearance, modesty, and glossiness version of programs may be modified without a notice for an improvement of the product. Please download and install an upgraded software from the homepage of this company.

## 2. Software Installation and Removal

### 2-1. e-CAM Software Installation (a)

Connect the bigger end of the USB cable of e-CAM to USB port of PC. Do not connect the smaller end on the camera.



Put e-CAM in CD-ROM, but title of CD must go right side up.



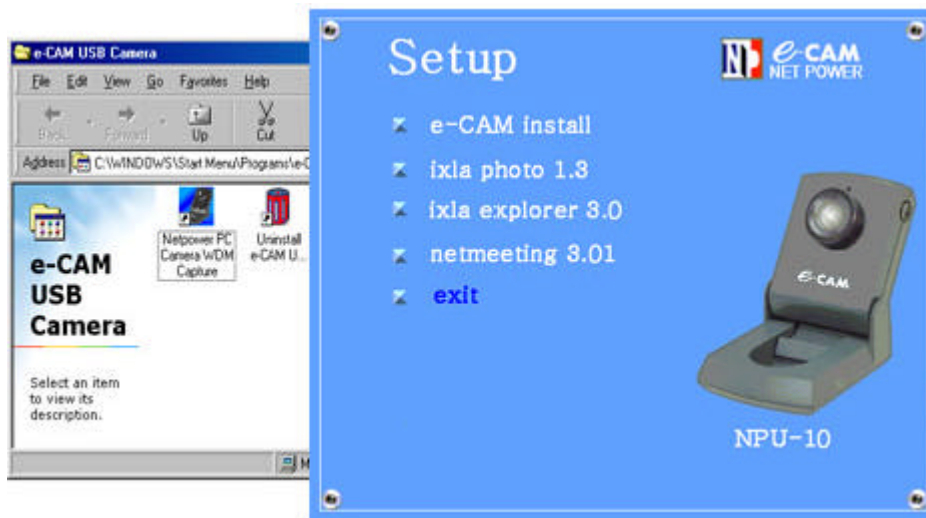
Click e-CAM install when Setup picture appears.



When processing the program, you can click OK when message appears on the screen. Using the arrow direction on , connect it to the e-CAM, then the software and driver will be automatically installed.



Installation will be completed if New hardware Discovery window has disappeared. Then a window as below appears. Close the window and then click exit feature to make the screen disappear, you can now use e-CAM. Use by clicking the e-Cam Icon on the desktop.



If the installation is not successful as the above installation orders and the underneath message window opens up, please follow the indicated procedure.

## 2-2. e-CAM Software Installation (b)

When the window below appears, install software in order. Click next.



To search for directory which has a USB Camera driver, Click next.





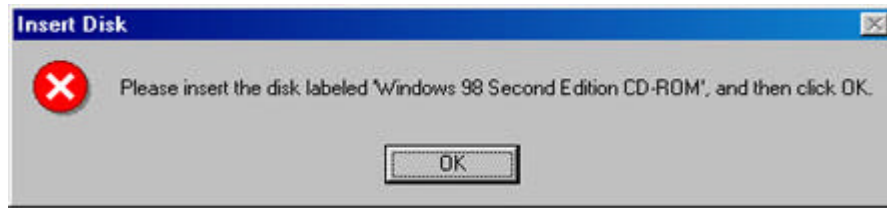
To indicate the position for inspection, select `c:\windows\inf`, then click next.



Click next.



Indicate the directory which has a Window98 CD-ROM or Window98 installation disc and click OK.

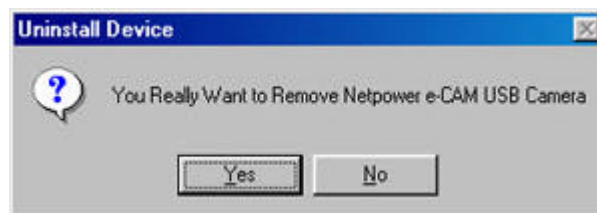
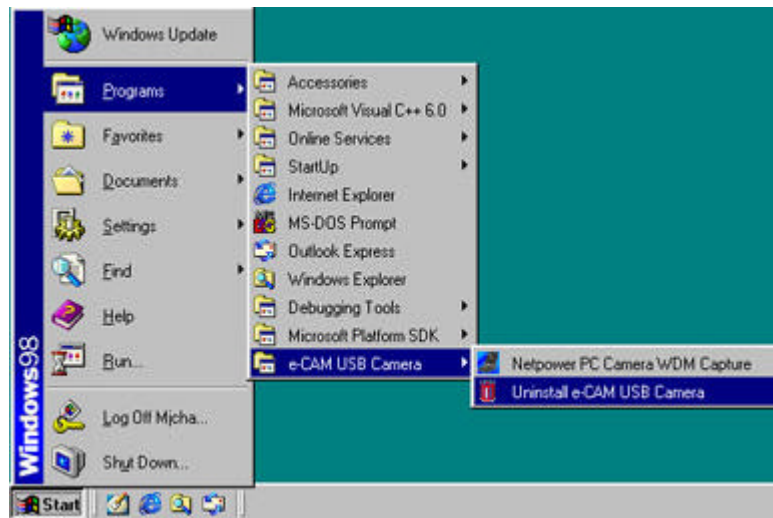


Completed installation of USB Camera e-CAM. Click Finish.



## 2-3. e-CAM Software Removal

Start Programs e-CAM USB Camera Uninstall e-CAM Camera.  
Click message window in the following order and the software will be removed.

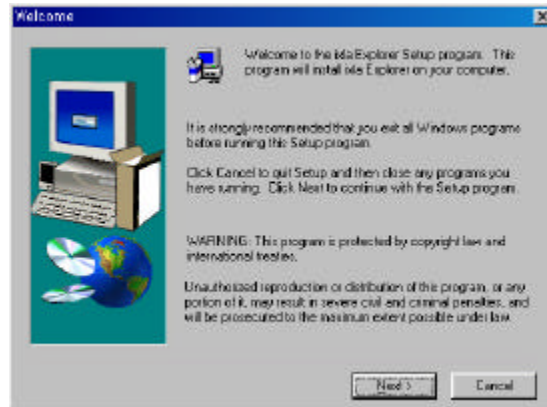


## 2-4. Bundle Software Installation

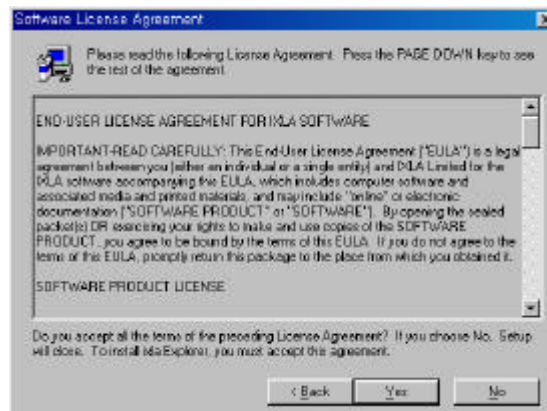
As for glossy softwares that require a re-booting after the completion of an installation, do the re-booting just once, after finishing up on all other programs' installations and taking the CD out.

### ixla explorer installation

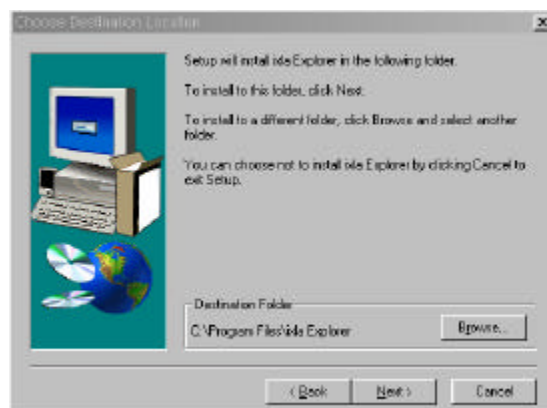
Click ixla explorer 3.0 at setup screen.  
Click Next



Click Yes



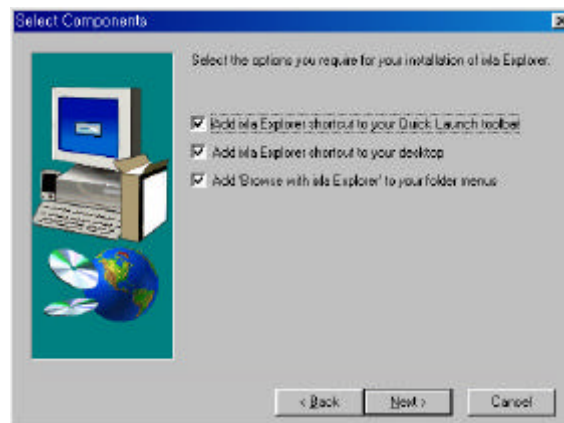
Click Next



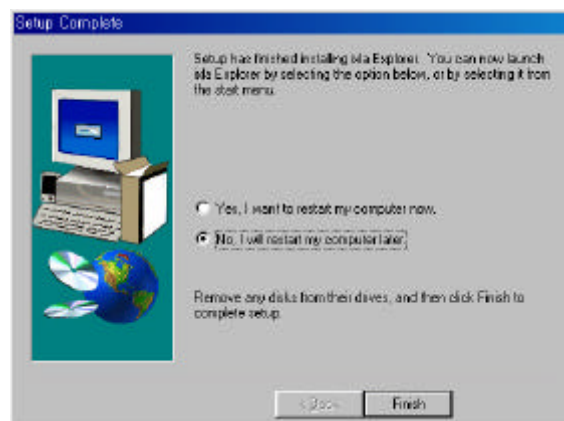
Click Next



Click Next



Select (No, I will ). Click Finish, then installation will be completed.

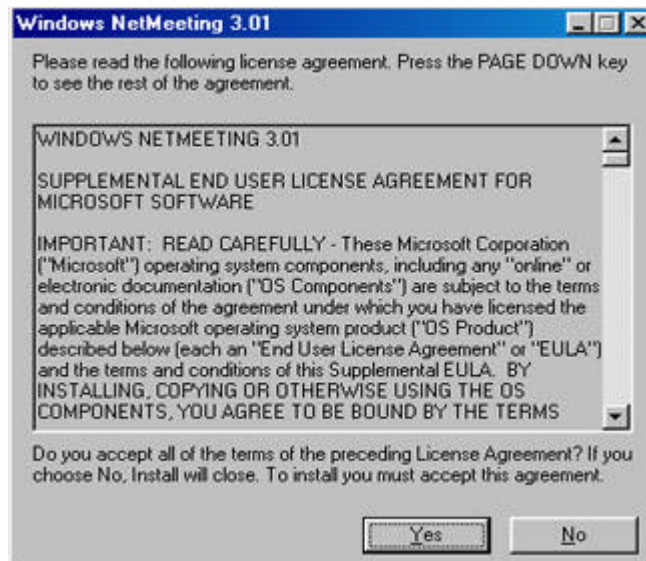


## NetMeeting installation

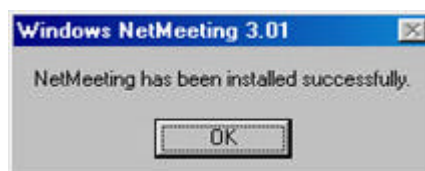
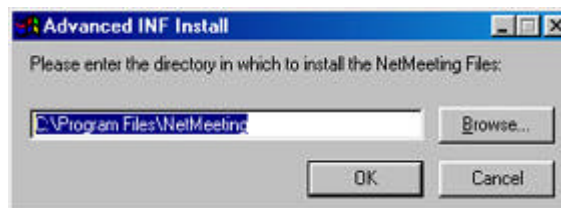
Click Netmeeting 3.01 at setup screen.  
Click Yes.



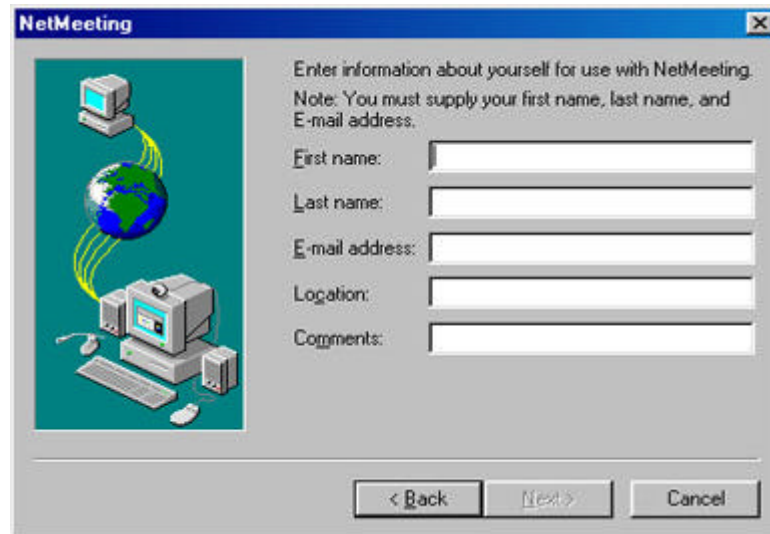
Click Yes.



Click OK.



Practice Netmeeting and installation process will be continued. In this process you must input your last name, first name, and e-mail address.



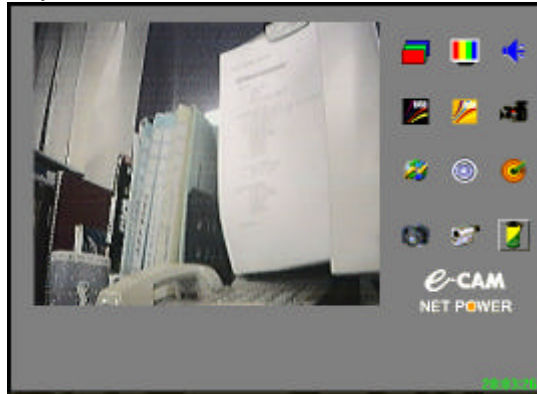
The image shows a Windows-style dialog box titled "NetMeeting". On the left side, there is a graphic of a globe with two computer monitors connected by yellow lines, symbolizing network communication. On the right side, the text reads: "Enter information about yourself for use with NetMeeting. Note: You must supply your first name, last name, and E-mail address." Below this text are five input fields: "First name:", "Last name:", "E-mail address:", "Location:", and "Comments:". At the bottom of the dialog box, there are three buttons: "< Back", "Next >", and "Cancel".

Netmeeting installation has been completed. Click exit and reboot your system.

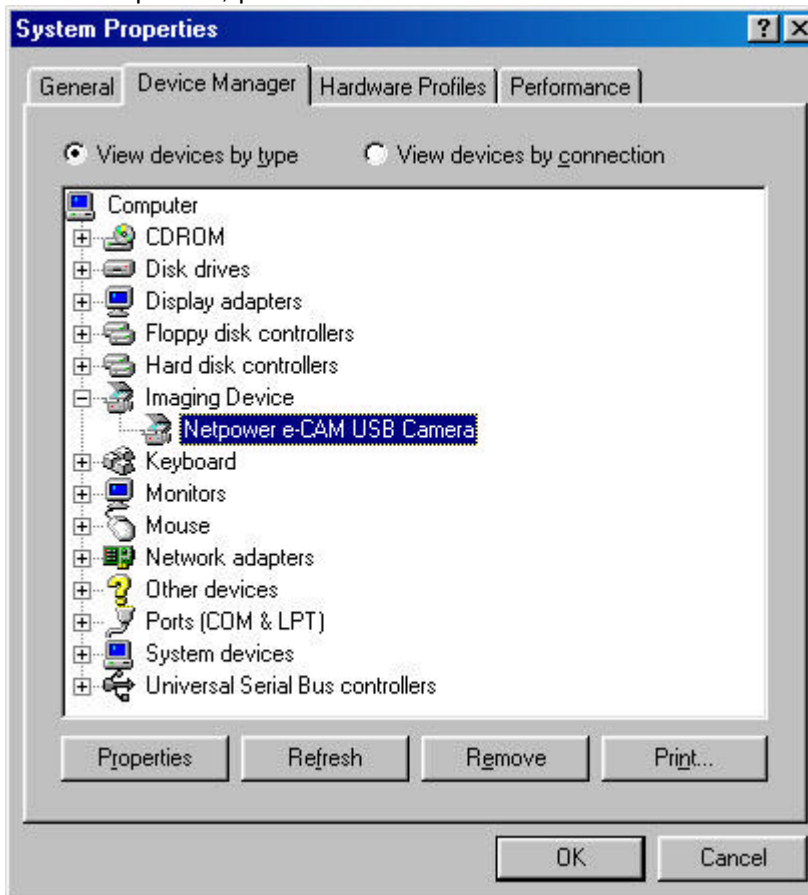


## 2-5. Performing the Program

Program installation has been completed. Click e-CAM icon twice in the window desktop, or push the snapshot button of e-CAM, then the main screen will appear. When a picture appears on the main screen, it means installation is correct. You can then use the function you want.



After following the above installation instructions, and the image still does not open up on the main picture, please check these items.



Make sure that Start Setting Control panel System Device manager  
Image device Netpower e-CAM USB Camera.

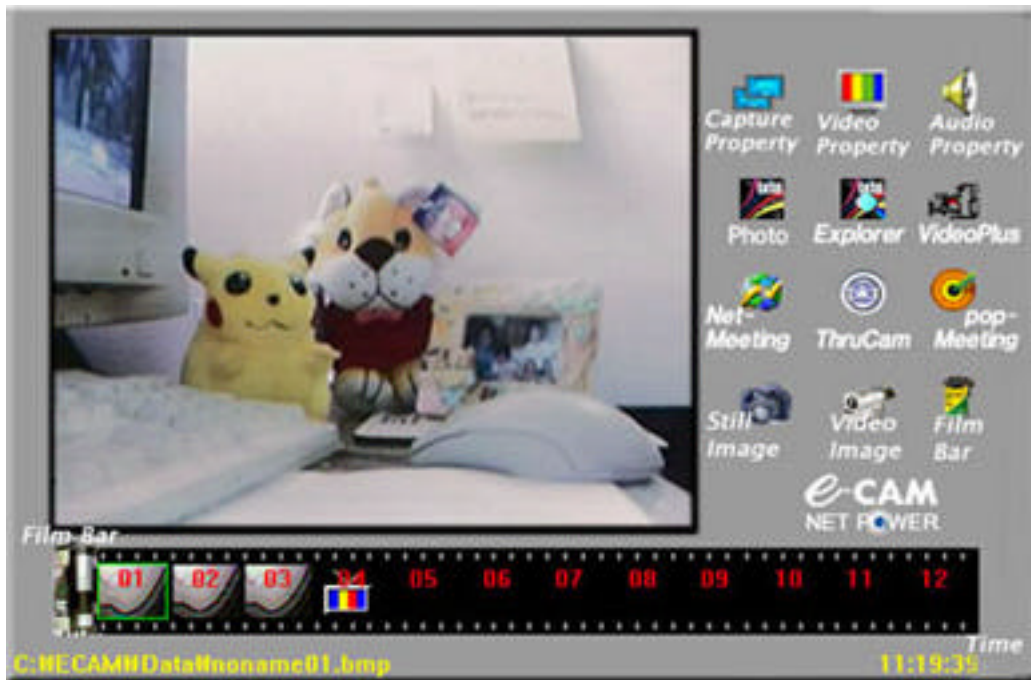
If there is no drive as started above, or yellow mark in front exists, it means that the program is incorrectly installed. The reason may be that you have not followed the installation order correctly, or a collision against other USB Camera may have happened.



### 3. e-CAM program usage

#### 3-1. Main Picture and Icon Explanation

e-CAM main picture can be used by clicking icon of the functions needed for the screen capture, video and audio record/play, and e-CAM camera function arrangement.



e-CAM Main Frame

#### Registered Information icon



Capture Property : Arrange the number of video frames per second and the size of the screen when it is used as video and sound capture mode. Indicate the location that the temporary captured file should be saved, name the file, and adjust video record environment.



Video Property : Arrange the function of camera.



Audio Property : Arrange the audio condition.

#### Application program connection icon



ixla photo : Image presentation program to create electronic picture album, internet home page, and presentation.



ixla explorer : Easy and fast program for watching multimedia files like digital camera, scanner, and clip art.

Net meeting : Internet screen meeting.

If the screen chatting program on the main screen of e-CAM is clicked, it moves to the screen-chosen program as in a screen form. When the usage of a screen chatting program is completed, exit out, and click once on the icon of a program used on the main screen of the e-CAM. Then in short while, the removed screen returns.

Pausing screen, mobile picture capture icon



Still Image capture : It functions to take a picture that you want.



Video capture : It functions to record video and audio by using avi files.



To see Film bar : It is used to open and close the film bar which is saved or played captured picture or video file.



Film bar : As a film to save captured picture or video file, it shows the picture of small size.

Menu window

Video Property(V)	
Audio Property(A)	
Capture Property(C)	
Capture Still Image(S)	
Capture AVI(M)	
Split Video Screen(E)	<i>Split the video screen or put it back its position</i>
Film Bar(E)	<i>Open or close the film bar</i>
Text Color(I)	<i>Adjust the color of text in status bar</i>
Help(H)	<i>Open the help file</i>
Exit(X)	<i>Exit the program</i>

### 3-2. Explanation of Main Function for Icon



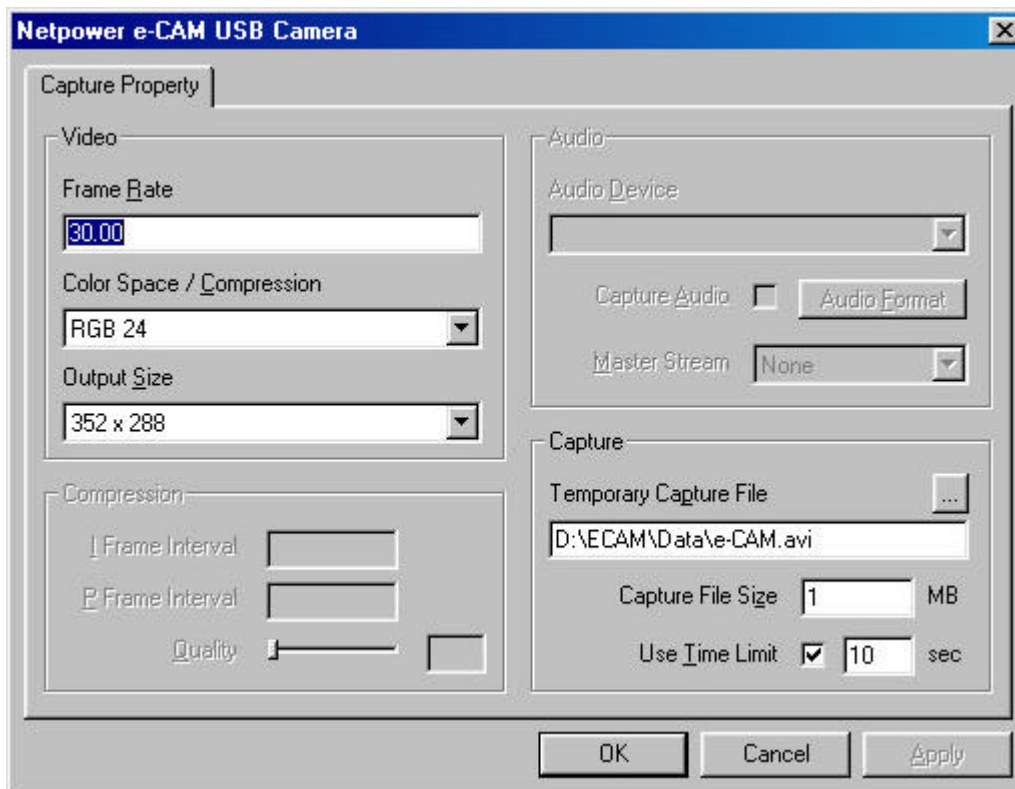
Video capture : If you click this icon, noname00.avi will be marked, and ——— marked on video bar.



Film bar : If you click film bar, the film bar will appear. Picture and video captured file on film bar will be marked according to the order captured as noname00.bmp or noname00.avi.



Capture property



Click the Capture property, mark will appear.

Video part arranges as a convenient resolution by the degree of PC quality.

Resolution is basically arranged as a size 352 × 288.

For the relationship between frame rate and output size, it is possible to arrange a maximum of 15 frames on the VGA Mode(640×480), and a maximum of 30 frames under the CIF Mode(352 × 288).

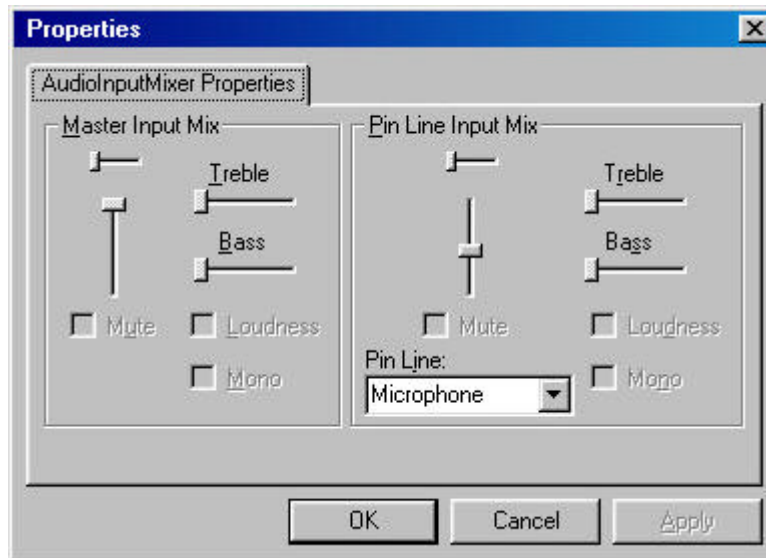
The number of bit to express color can be selected between RGB24 and 1420 Mode.

In recording, audio must mark capture audio as , MASTER STREAM selects the basic stream in capture, so that if you select AUDIO among NONE, VIDEO, and AUDIO, the sound in play may be played at a better quality.

Capture indicates the saving place for the captured file from main screen. You can also arrange the file capacity and time in recording a video on screen.



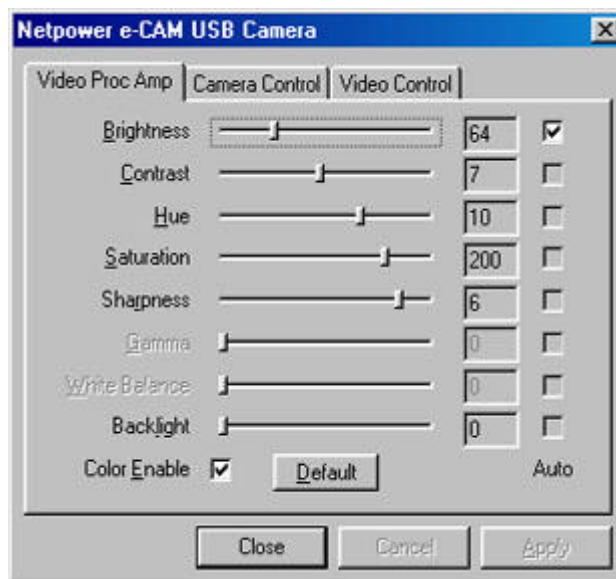
## Audio property



Select input Audio source and adjust the size of the sound from the arranged Audio source.



## Video property



**Brightness** : It is designed to arrange brightness of picture, so if you select Auto list, brightness is automatically adjusted by the surrounding condition.

**Contrast** : it functions to adjust the difference in brightness.

**Hue** : It functions to adjust general color on the screen.

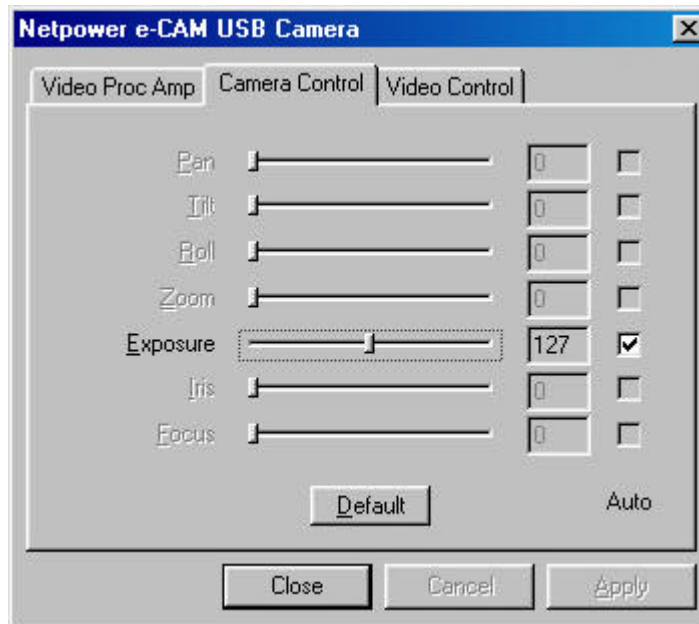
**Saturation** : It functions to adjust the depth of color.

**Sharpness** : It functions to adjust the clearness of the contours of the picture on the screen.

**Back-light** : It functions to adjust the back-light revision.

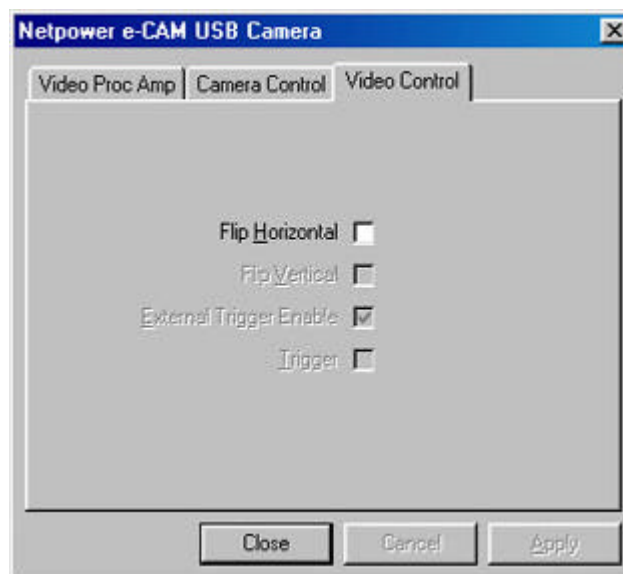
**Color Enable** : It functions to convert color/black and white.

All of these are converted to the first situation, if you click Default.



Exposure will arrange the exposing time of the camera sensor by the surrounding condition.

If you click Default, every setting goes back to the first situation.

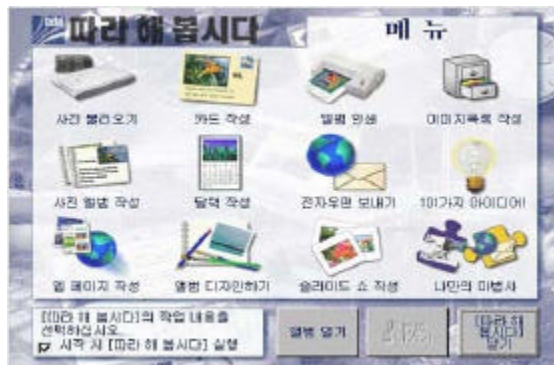


Flip Horizontal functions to watch the picture by moving right and left.

## 4. Introducing Bundle Software



ixla photo



It provides creative manufacturing method in making an electronic picture album, internet web page, or business presentation from the image of digital camera or other digital input medium.

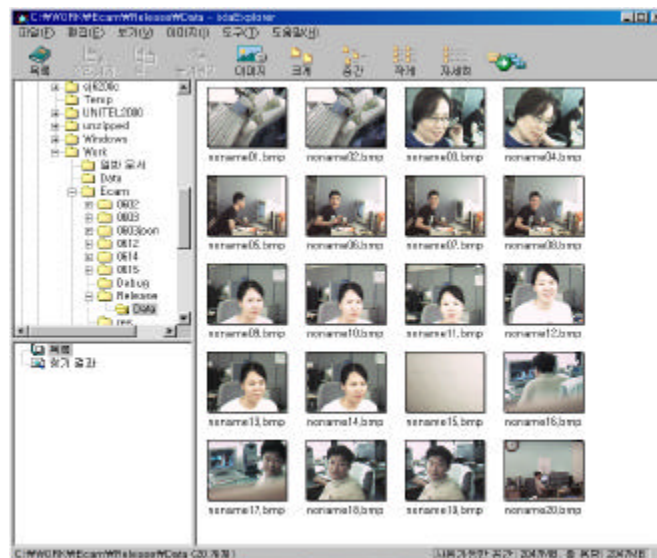
You can watch the presentation worked on through a computer at home, print on paper, and you can also save to floppy disc or make it an internet web page to show an electronic picture album to your friends or relatives.

It has the strong feature of making an electronic picture album.

See the folder help guide of the software or the manual folder of the CD for using method.



ixla Explorer



It is software to see multi-media files like digital camera, scanner, picture of photo CD, clip art, video, audio file in a fast and easy way.

You can put the multi-media file in order in a easy way because it has the strong feature of an image list.

See the folder help guide of the software or the manual folder of CD about the using method.

## Netmeeting

- At Netmeeting, you can arrange a call by using directory server, meeting server, and web page.
- You can work easily with other participants of meeting by sharing the program. If there is a program in a computer, all participants may work together on the program document. At the same time, you can also send and receive the file to be worked on.
- If you use Netmeeting audio and video, you can watch the feature or listen the sound of other persons. Although you cannot send the video, you can continuously receive a video call at Netmeeting video window.
- If you use chat function, you can communicate with several other persons. It keeps the meeting secretive by encoding the chat call.
- If you use white board, you can explain the concepts by receiving the help from diagram information, sketch use, and graphic sign.

## 5. Solving the Problems

e-CAM does not setup in a correct way.

(See this manual)

Remove incorrect setup program, and then set it up again.

Light of LED in front of e-CAM does not turn on.

Make sure the cable is connected.

Picture on the screen is not clear.

Adjust the camera focus. You can adjust by rotating the hood of the lens to right or left. Also make sure, some other materials are stained to lens. If other materials are stained to lens, you can clean by using alcohol.

Picture is too bright or too dark.

Brightness of picture is automatically adjusted, but in the case when the camera is located in back-light or dark indoor, it must adjust the brightness by hand. See video property of the manual.

Color of picture is thick or thin.

You can adjust the color by changing the switcher's value at the "Video Proc Amp" of the video property.