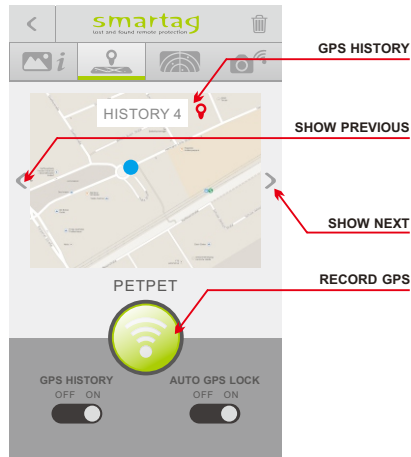


GPS function (location checking)

By keeping the GPS record, you can trace your valuable belongings in at once. Also can use it as a car finder with GPS record.

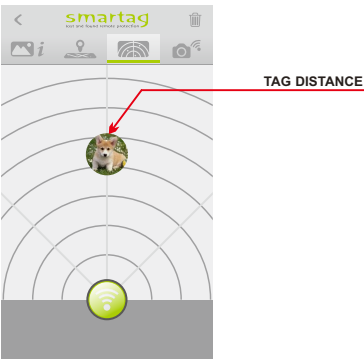
In total, it can save up to 10 GPS record.



RADAR function

The radar feature provided in the APP gives you a visual image on your smartphone showing the distance and movement of the object that you want to keep track of.

5



Remote shutter (SELFIE) function

Enter Remote Shutter function, you can use the 'smartag' button for photo taking.



6

Changing Battery

It is using CR 2016 standard battery. Pull out the battery door, remove the old battery and replace it with a new one. Please make sure the pole is correct. Slide in the battery door carefully and press/hold the button for 2 seconds to turn on the tag.

Care and maintenance Instructions:

When cleaning the unit, use only a dry soft cloth to wipe the unit. Never allow water or any other liquids to get inside the unit while cleaning. Do not use any cleaning agents containing alcohol, ammonia, benzene, or abrasives as this may harm the set.

Trouble Shooting

Symptom	Possible problem and solution
Cannot pair successfully	Check whether the tag is in power on and searching mode. Check whether there are too many Bluetooth receivers around your Bluetooth device. Turn them off to avoid any disturbance. And pair again.
The sound is small or distorted	Check the battery in your tag.
No sound from the tag when pressing the search button on the APP.	Check the bluetooth is connected and the battery is in good condition. Please reset the tag and pair again.

Technical Specifications

Model : SMARTAG
DC power : DC 3V (CR 2016)
Bluetooth smart connection
Working Distance in open air : < 20M

FCC ID : 2ACUH-SMARTAG

THIS DEVICE COMPLIES WITH PART 15 OF FCC RULES, OPERATION IS SUBJECT TO THE FOLLOWING TWO CONDITIONS:

- 1)THIS DEVICE MAY NOT CAUSE HARMFUL INTERFERENCE, AND
- 2)THIS DEVICE MUST ACCEPT ANY INTERFERENCE RECEIVED, INCLUDING INTERFERENCE THAT MAY CAUSE UNDESIRE OPERATION.

Changes or modifications not expressly approved by the party responsible for compliance could void your authority to operate the equipment.



7

smartag
lost and found remote protection



Instruction Manual

Read this instruction manual before operating the appliance; and save it for further reference.

Made in China

Congratulations on your purchase of this SMARTAG. You can enjoy freedom on the go as that device will help you in preventing from lost of your valuable belongings.
To get the most from your tag function, please take a few minutes to read these instructions.

Safety instruction

- * Heed all warnings.
- * Follow all instructions.
- * Do not use this device near water; clean only using a dry or slightly moist cloth.
- * The appliance shall not be exposed to dripping or splashing and no objects filled with liquids, such as vases, shall be placed near the tag.
- * Do not place tag on any wet surface.
- * Do not allow children to play with the tag.
- * Do not cover the unit with any table-cloths, curtains, etc. Place the unit where there is good air circulation.
- * No naked flames sources, such as candles, should be placed on the product.
- * Press the buttons gently. Pressing them too hard can damage the tag.
- * Do not use the tag in an extremely dry environment, as this can lead to static discharge which can damage the tag.
- * Do not expose the tag to temperatures above 35C; keep it out of direct sunlight.
- * This tag has no user-serviceable parts. Do not attempt to repair this product yourself. Only qualified service personnel should perform servicing.
- * Care required with the use of this apparatus in tropical and/or moderate climates.
- * Do not subject the tag to harsh impacts. Do not drop the appliance. This may result in damage to the tag.
- * Use a slightly damp, lint-free cloth to clean this appliance.
- * Do not place unit near TV, speakers, wireless telephones and other objects that generate strong magnetic fields.
- * Do not use this tag inside hospital or next to any medical instrument.
- * Only use attachments/accessories specified by the manufacturer.

1

Install APP - SMARTAG

Unpack the unit carefully. We recommend that you save the box and packing materials, in case you wish to store the unit.

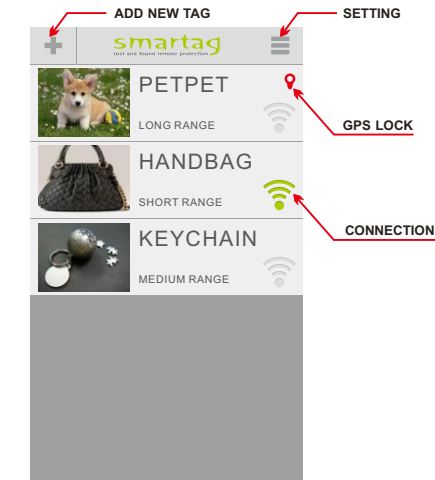
Before setting up the unit, please have your smartphone ready with installed APP - SMARTAG, which is available in Apple APP store and Google play store.



2

Syncing 'SMARTAG' with smartphone

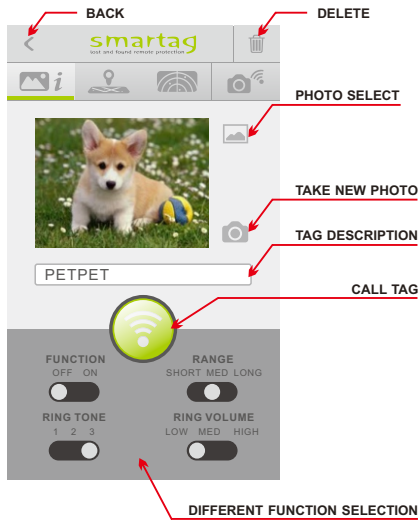
1. Pull out the battery insulator from the tag and long press the button until a 'bibi' sound on.
2. Put the tag you wish to be synced next to your smartphone.
3. Open the 'SMARTAG' APP and turn on Bluetooth connection on your smartphone.
4. Click the '+' on the top left corner of the APP for adding new tag.
5. Wait for few second and you will find a new tag.
6. You can add a related photo and rename it if needed.
7. You can pair up to 8 SMARTAG on your smartphone.



Set up

1. Select the synced tag for function set up.
2. Select photo or take a tag related photo.
3. Rename the tag description.
4. Select different function as you needed (shown as below).

3



FUNCTION	- function ON/OFF selection
RANGE	- range to activate the tag selection
RANGE TONE	- alarm sound ringing selection
RING VOLUME	- volume HIGH/MED/LOW selection

Find the tag

By simply click the button on the APP to make your tag alarm on, can find your tag (valuable belongings) back... easy !

Two way tracking

By simply click the button on the tag to make your phone alarm on, can find your phone back... easy !

4