

# Wi-Fi Smart Light Switch User Manual



Android & iOS System

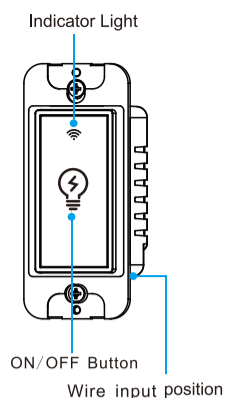


Alexa TUTORAL



Google Home TUTORIAL

Please scan the QR Code, or search by "eWeLink" to download on APP Store or Google Play



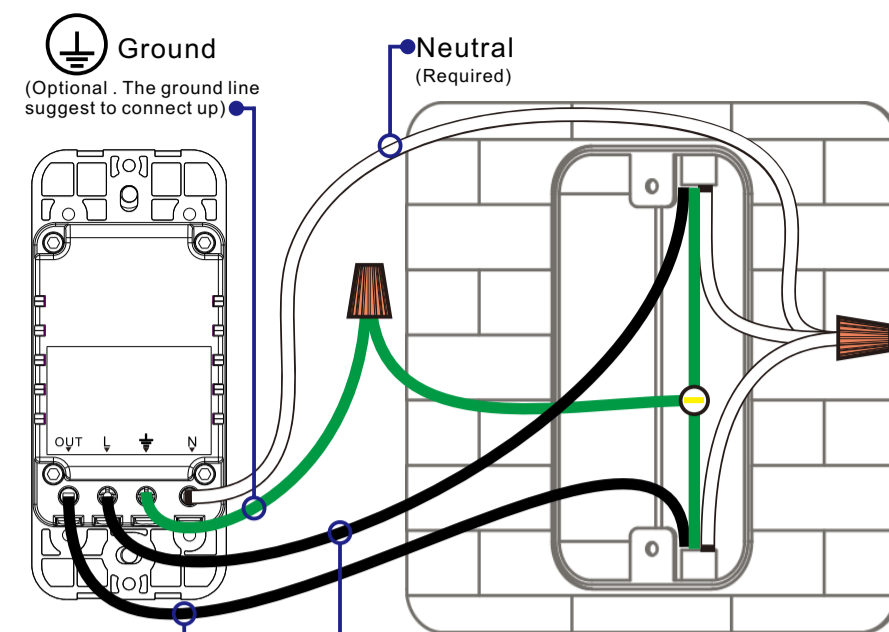
## Product Features

- Works with Amazon Alexa and Google Home, commanded by your voice.
- Control your home with your smart phone app or tablets from anywhere at anytime.
- Timing switch to turn ON/OFF your lights and appliances automatically.
- Intelligent sharing can be freely Shared with family members
- Refined appearance and made of fire resistant material, Safe and Durable.
- Overload protection, easy to replaces your traditional mechanical switch (Requires a neutral wire).
- The Smart Switch blends well with any room decor with its elegant, minimal design with sensitive capacitive touch control.
- Its LEDs can guide you at night when lights go off and you can simply turn it ON/OFF by directly pressing.

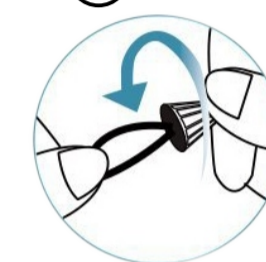
## Specifications

Type	120 Wi-Fi Smart Wall Light Switch
Model	KS-602
Power supply mode	Neutral-Live Wire
Rated Current	15A(Max)
Rated Voltage	AC110-125V-50/60Hz
Rated Power	1650W
Wireless Frequency	2.4GHZ
Wireless Standard	IEEE802.11 b/g/n

## INSTALL THE WALL SWITCH



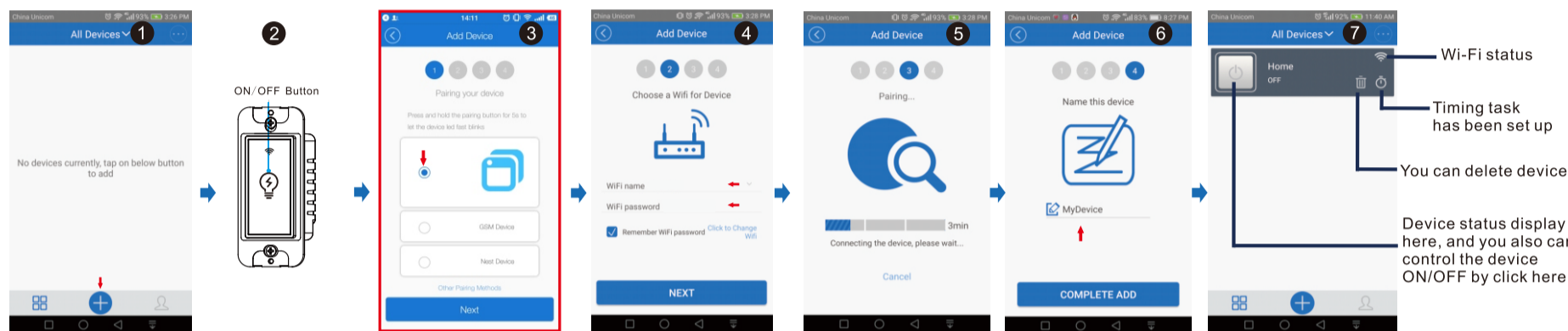
Note: verify all the connections are correct and wire nuts are screwed tightly



Wall Switch(Load/live) (Required connect the Load/Live wires correctly. they are not interchangeable. if you are not sure which of the two wires is live and which is load, simply try one configuration)

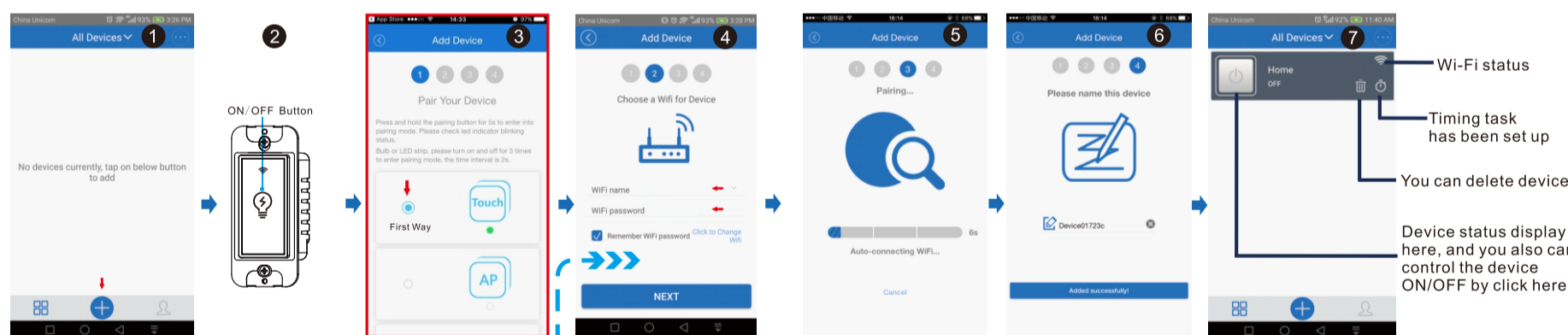
- Cut off the power before installation
- Please use it only when it's installed with RCD or current leakage protector at home

## Android System connection way



1. Click the "+" button
2. Touch the switch's ON/OFF button for 5 seconds until blue light three flashes one stop please choose first way and next
3. Input current Wi-Fi name and password for you home router
4. Modify the device name

## IOS System connection first way

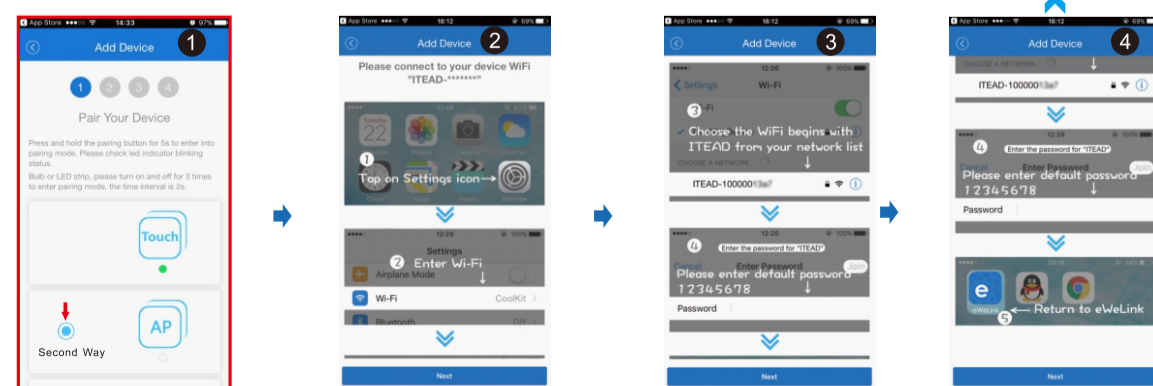


1. Click the "+" button
2. Touch the switch's ON/OFF button for 5 seconds until blue light three flashes one stop please choose first way and next
3. Input current Wi-Fi name and password for you home router
4. Modify the device name

## Attention :

1. One device only can connect with one mobile phone. if friend want control device, please choose share function. if want connect with new network or mobile phone, please delete the device in app , and connect again
2. If you want after service and return of goods, please delete the device in app otherwise affect the after service.

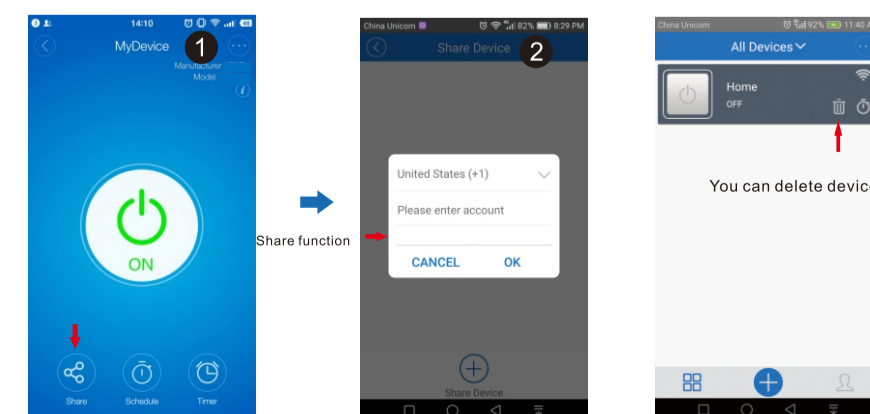
## IOS System connection second way



1. Touch the switch's ON/OFF button for 5 seconds, until blue light three flashes one stop then Touch ON/OFF button again for 10 seconds until the blue light continuous flashing quickly. choose second way and next
2. Please don't click next on this step, please according picture guide, go back your phone setting choose Wi-Fi name ITEADXXXXX and enter password 12345678 after connected with ITEAD come back App this page click next

## Attention

- Products can only be paired on 2.4G-Wifi-Router, don't accept the 5G-Wifi-Router
- Please set your home Wi-Fi account name and passwords use numeric and letters, don't use special symbols



#### Federal Communications Commission (FCC) Statement

This device complies with part 15 of the FCC Rules. Operation is subject to the following two conditions: (1) This device may not cause harmful interference, and (2) this device must accept any interference received, including interference that may cause undesired operation.

Note: This equipment has been tested and found to comply with the limits for a Class B digital device, pursuant to part 15 of the FCC Rules. These limits are designed to provide reasonable protection against harmful interference in a residential installation. This equipment generates, uses and can radiate radio frequency energy and, if not installed and used in accordance with the instructions, may cause harmful interference to radio communications. However, there is no guarantee that interference will not occur in a particular installation. If this equipment does cause harmful interference to radio or television reception, which can be determined by turning the equipment off and on, the user is encouraged to try to correct the interference by one or more of the following measures:

- Reorient or relocate the receiving antenna.
- Increase the separation between the equipment and receiver.
- Connect the equipment into an outlet on a circuit different from that to which the receiver is connected.
- Consult the dealer or an experienced radio/TV technician for help.

Warning: Changes or modifications made to this device not expressly approved by **NEXXT SOLUTIONS** may void the FCC authorization to operate this device.

Note: The manufacturer is not responsible for any radio or TV interference caused by unauthorized modifications to this equipment. Such modifications could void the user's authority to operate the equipment.

#### **RF exposure statement:**

The transmitter must not be colocated or operated in conjunction with any other antenna or transmitter. This equipment complies with the FCC RF radiation exposure limits set forth for an uncontrolled environment. This equipment should be installed and operated with a Minimum distance of 20cm between the radiator and any part of your body.