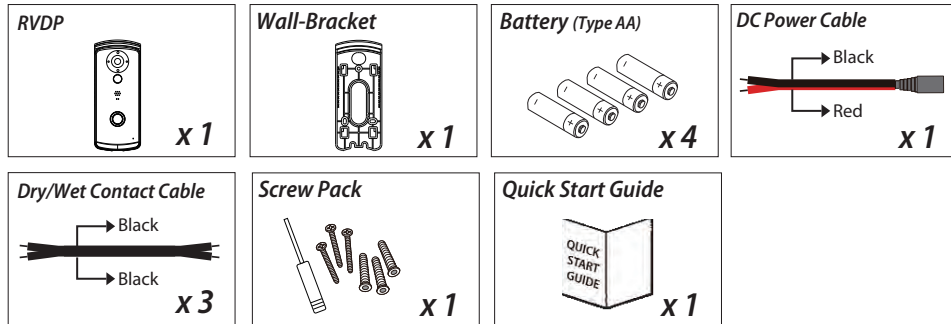


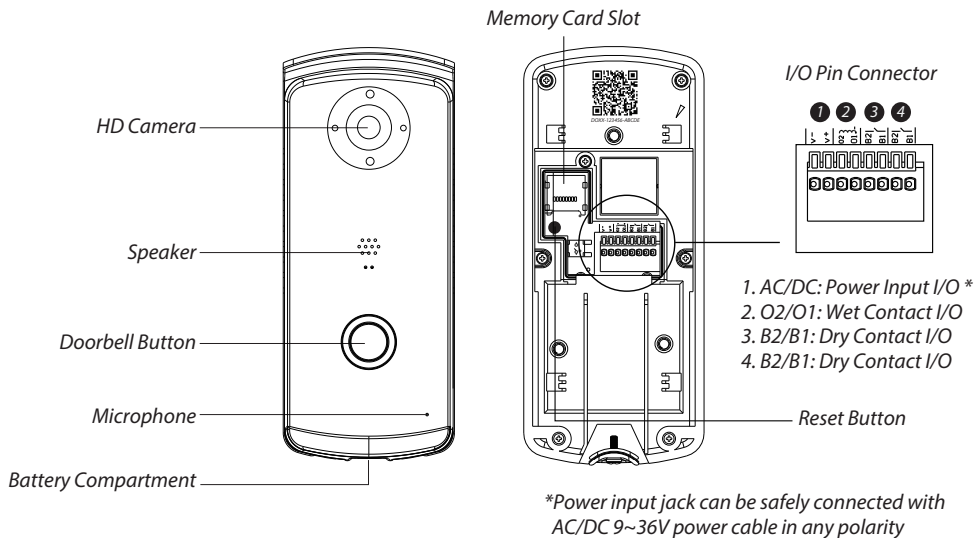
QUICK START GUIDE

KIT CONTENT :



Note: For video recording, **BE SURE TO** use CLASS 10 memory card or above . Other kinds of memory card may cause unexpected results and should be avoided.

HARDWARE OVERVIEW



SETUP THE VIDEO DOORPHONE

1. App Download and Installation

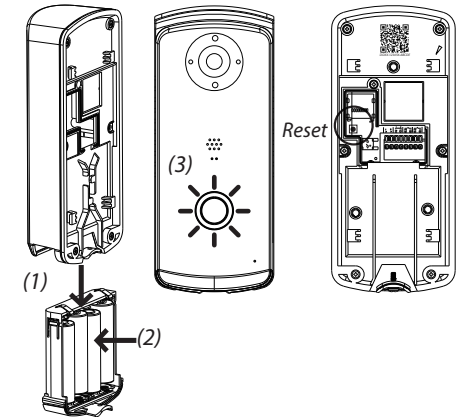
(1) Please download and install the "OMGuard HD" APP to your device.



2. Insert Batteries

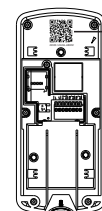
- (1) Unscrew the battery compartment screw with supplied screw driver.
- (2) Insert the batteries supplied. Make sure the polarity is as indicated before inserting the battery cartridge back to RVDP.
- (3) After the batteries are inserted, the Push Button illuminator will light up and flash, indicating RVDP is ready for further setup.

Note: If the illuminator is not lighted, press/hold the Reset Button for 5 seconds until the illuminator lights up and flash.



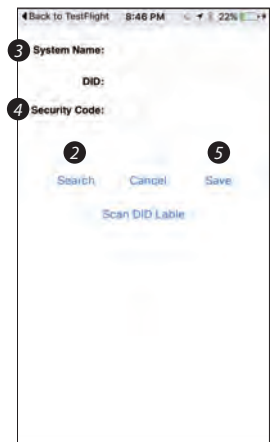
3. Setup RVDP via App

- (1) While the push button illuminator is flashing Red&Blue, launch the app and tap to add device.
- (2) Scan QR code to bring up the DID or enter the DID manually (The DID sticker is located at the back of the RVDP)
- (3) Enter name for your RVDP (maximum 20 characters).
- (4) Enter default Security Code: 123456.
- (5) Tap "Save" and follow in-app wizard to complete the setup.



Device ID: DOXX-123456-ABCDE (On Sticker)
 Wi-Fi Pairing Mode:
 SSID: RVDP-XXXXXX
 Default PW: 12345678

Note: On the back of the RVDP you will find DID label containing DID number, which you will need later on when resetting device.

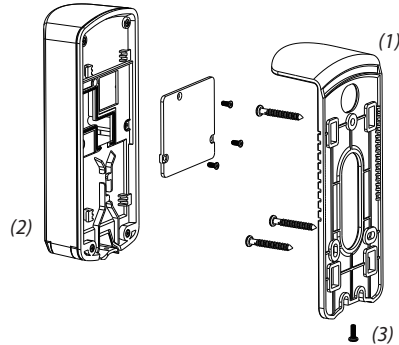


DOORPHONE INSTALLATION

Note:

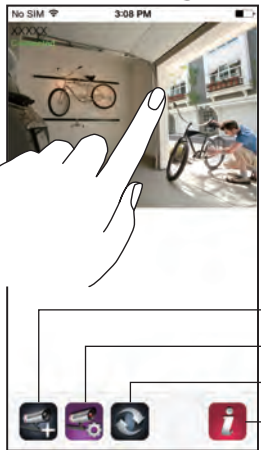
- (A) Battery Power Option is being illustrated here, therefore if you wish to power the RVDP via existing doorbell wires or optional adaptor, please refer to owner's manual for more details.
- (B) Before installation begins, it is suggested to turn off the "Power Saving" mode so you can have continuous connection via the live-video while defining the installation location/height. Please refer to Power Saving Mode section of this document.

- (1) Secure the wall bracket on a stable surface
- (2) Mount the RVDP onto the wall bracket
- (3) Secure the RVDP via the screw supplied.



LIVE VIEW / SNAPSHOT / RECORDING

Main Page



- Add Device
- Device Setting
- Refresh
- Information

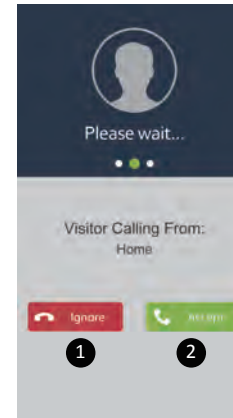
LIVE VIDEO*



- Live View
- Video Record
- Phone Mode Talk
- Hand-Free Talk
- 3rd Party Lock/Gate Control
- Video On/Off
- Mute/Unmute
- Snapshot

*Available while RVDP not in Power Saving Mode.

ANSWERING A CALL

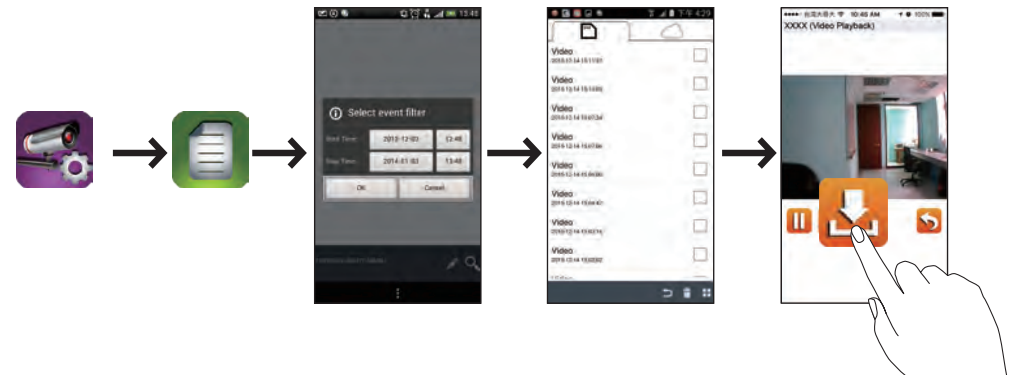


Above screen would appear When visitor pressed the bell button.
 1. Ignore the visitor call request.
 2. Accept the visitor call request.

Note: For iOS user, due to the system fundamental structural design, you will have to confirm/accept incoming visitor call request via pop-ups first before the answering section would appear. For more details, please refer to the manual.

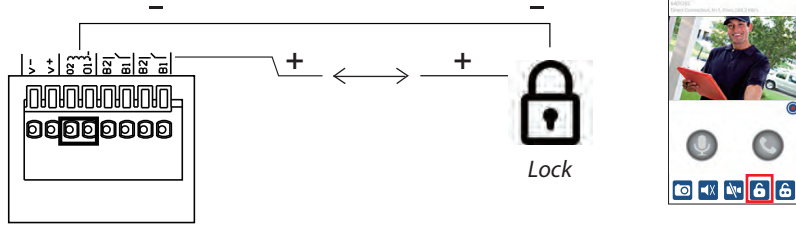
PLAYBACK

- (1) Tap the Device Setting and then the Event List icon.
- (2) Select the time interval for the event list.
- (3) Tap to select the file for playback.
- (4) If you want to store the file in mobile device, tap  to download the file (best while under Wi-Fi environment due to large high definition data size).



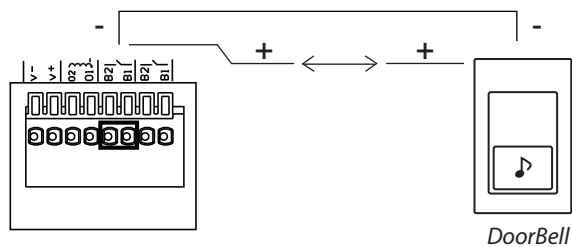
ADDITIONAL WIRING DIAGRAMS

A. Electronic Lock

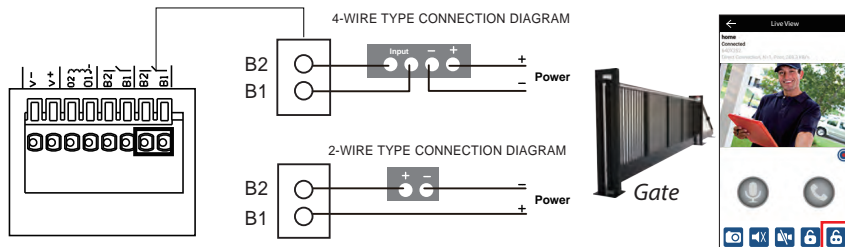


Note: For remote door unlock function with 12V/1A current output trigger, the direct input power must be higher or equal to AC or DC 15V/1.5A.



B. Existing Bell Wiring



C. Electronic Gate (2/4-Wire Type Connection)



POWER SAVING MODE

- (1) While in the device list section, tap  to bring up edit option icons.
- (2) Tap  to enter System Info
- (3) Select "Advanced" and enter default password: 123456.
- (4) Scroll down to the Power Saving section and select desired power saving time.

Note: It is suggested to set the Power Saving to 30 seconds to maximize battery power.

DEVICE SETTING TIPS

Please note this device supports operation using both batteries (AA battery x4) and power from existing doorbell power lines (9V~36V AC/DC); however, there are certain function limitations when the device is running under battery mode:

***Once the device is in sleep mode; the user can no longer access the device from their mobile device. The device will only become online when the motion detector has detected an event, or by pressing the power button at the bottom of the device.**

Device will return to sleep mode after:

- After device wakeup on visitor call or motion-detect event; the device will automatically go to sleep mode again in any of the following conditions:
- When preset power saving time (30s/60s/90/120s) is reached after a visitor or motion events
 - After user answers a visitor call or checks live view from a motion-detect event using the APP and then exits the APP.
 - When device cannot connect to the pre-set Wi-Fi network for any reason; the device will retry the connection for 30 seconds; if Wi-Fi connection still cannot be established after 30 seconds, the reconnect attempt will be stopped and the device will enter power saving mode again.

How to Maximize Battery Power:

When device is using battery power, we suggest using the following settings to maximize battery power

- Install the doorphone where it can receive excellent Wi-Fi network signals (Weak Wi-Fi signal will force doorphone to operate using higher Wi-Fi Power, which may consume more power).
- Set Auto Sleep Timer to 30 seconds.
- Do not stay in live view or system setting mode unless it's necessary.

FCC Statement

Changes or modifications not expressly approved by the party responsible for compliance could void the user's authority to operate the equipment.

This equipment has been tested and found to comply with the limits for a Class B digital device, pursuant to Part 15 of the FCC Rules. These limits are designed to provide reasonable protection against harmful interference in a residential installation. This equipment generates uses and can radiate radio frequency energy and, if not installed and used in accordance with the instructions, may cause harmful interference to radio communications. However, there is no guarantee that interference will not occur in a particular installation. If this equipment does cause harmful interference to radio or television reception, which can be determined by turning the equipment off and on, the user is encouraged to try to correct the interference by one or more of the following measures:

- Reorient or relocate the receiving antenna.
 - Increase the separation between the equipment and receiver.
 - Connect the equipment into an outlet on a circuit different from that to which the receiver is connected.
 - Consult the dealer or an experienced radio/TV technician for help
- This device complies with part 15 of the FCC rules. Operation is subject to the following two conditions (1) this device may not cause harmful interference, and (2) this device must accept any interference received, including interference that may cause undesired operation.

The product from the body using the distance of not less than 20 cm

FCC Compliance Statement: This device complies with Part 15 of the FCC rules. Operation is subjected to the following two conditions: (1) this device may not cause harmful interference, and (2) this device must accept any interference received, including interference that may cause undesired operation.



*Products with CE Marking comply with EMC Directive (2014/30/EU); Low Voltage Directive (2014/35/EU); RED (2014/53/EU); ROHS Directive (2011/65/EU) issued by the Commission of the European Community. Compliance with these directives implies conformity to the following European Norms:
EMC: EN 301 489
LVD: EN 60950
Radio: EN 300 328*



*If the camera system no longer functions or can no longer be repaired, it must be disposed of according to the valid statutory regulations. Disposal of spent batteries/accumulators:
You are required by law (Battery Ordinance) to return all spent batteries and accumulators. Disposing of spent batteries/accumulators with common household waste is prohibited! Batteries/accumulators that contain hazardous substances are marked with the symbols on the side. These symbols indicate that it is prohibited to dispose of these batteries/accumulators in the household waste. The abbreviations for the respective heavy metals are: Cd=cadmium, Hg=mercury, Pb=lead. You can return spent batteries and accumulators that can no longer be charged to the designated collection points in your community, outlets or wherever batteries or accumulators are sold. Following these instructions will allow you to fulfill the legal requirements and contribute to the protection of our environment!*