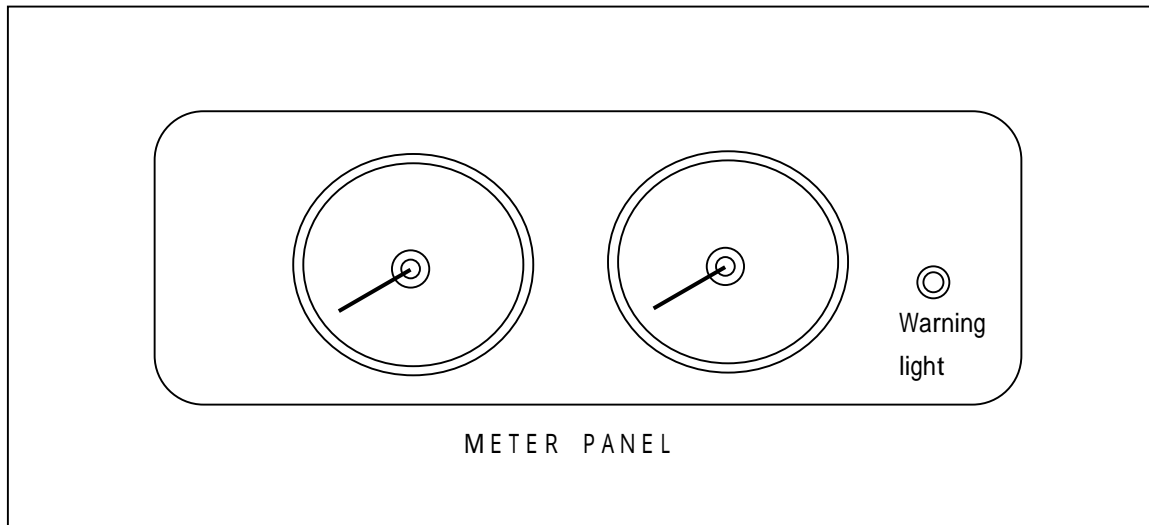


2. User's manual (provisionally)



Tire inflation pressure warning light

This light illuminates if the inflation pressure of any tire (except for compact spare tire) drops while the ignition key is in the "ON" position. It normally illuminates when the ignition key is turned to the "ON" position and goes off a few seconds later.

If the warning light illuminates while driving

Avoiding hard braking, hard steering, and high speeds, drive to the nearest gas station or authorize car dealer and adjust the tire inflation pressures.(except for compact spare tire)

If the warning light blinking while driving

It is thought abnormality of the device, go to the check to the nearest car dealer as soon as possible.

Whenever the tires and wheels are replaced with new ones

Tire inflation pressure sensors must be fitted on the new wheels and their ID codes must be programmed into the system. Have tire and wheel replacement performed by an authorized car dealer to avoid the risk of damaging the tire inflation pressure sensors.

CAUTION

- If the tire inflation pressure warning-light does not illuminate when the ignition key is turned to the "ON" position the system may be faulty.
- If the tire inflation pressure warning light illuminates while you are driving, avoid hard braking, hard steering, and high speeds. Otherwise, you could make the vehicle unstable and have a serious accident.
- The tire inflation pressure warning light may not illuminate immediately in the event of a tire blowout or rapid leak..

This device complies with Part 15 of the FCC Rules. Operation is subject to the following two conditions.

- (1) This device may not cause harmful interference, and
- (2) This device must accept any interference received, including interference that may cause undesired operation of the device.

“Complies with RSS-210 of Industry Canada.”

NOTICE

This equipment has been tested and found to comply with the limits for a Class B device, pursuant to part 15 of the FCC Rules, These limits are designed to provide reasonable protection against harmful interference in a residential installation.

This equipment generates, uses and can radiate radio frequency energy and, if not installed and used in accordance with the instruction, may cause harmful interference to radio communications However there is no guarantee that interference will not occur in particular installation. If this equipment dose cause harmful interference to radio or radio or television reception, which can be determined by turning the equipment off and on, the user is encouraged to try to correct the interference by one or more of the following measures.

- Reorient or relocate the receiving antenna.
- Increase the separation between the equipment and receiver.
- Connect the equipment into an outlet on a circuit different from that to which the receiver is connected
- Consult the dealer or an experienced radio/TV technician for help.

FCC WARNING

Changes or modifications not expressly approved by the party responsible for compliance could void the user's authority to operate the equipment.