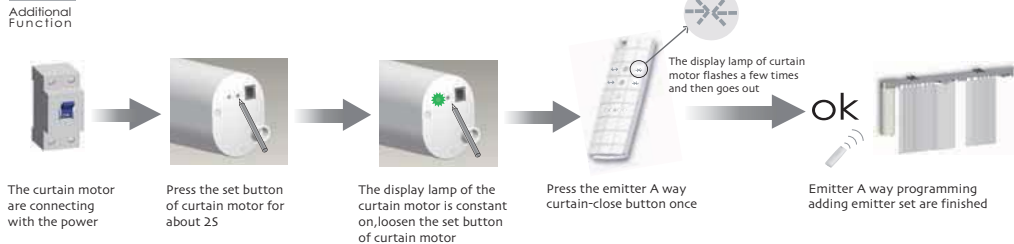
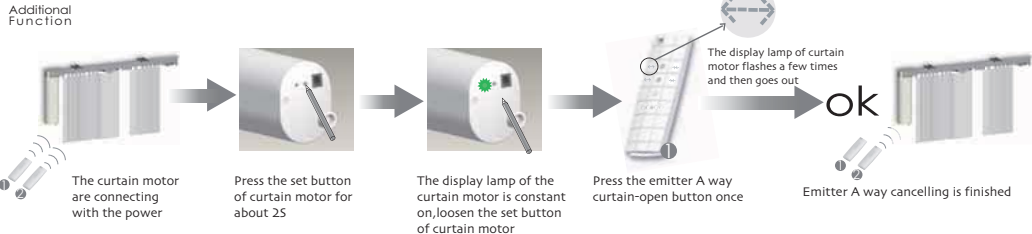




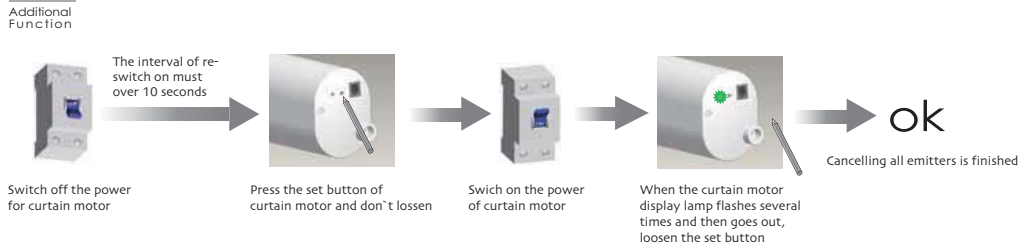
## Set up and add emitter



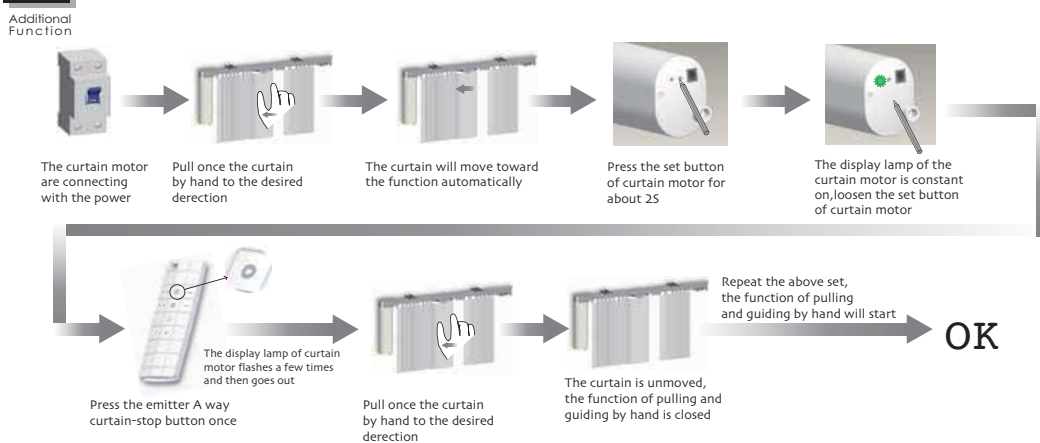
## Cancel one channel of emitter



## Cancelling all emitters is finished



## The function of pulling and guiding by hand



All controls support 433MHz & 868MHz  
All controls support 230V/50Hz & 120V/60Hz

## DC146/DC147 special-purpose emitter for curtain motor Specification

Version No: A 01



### Special-purpose emitter for curtain motor

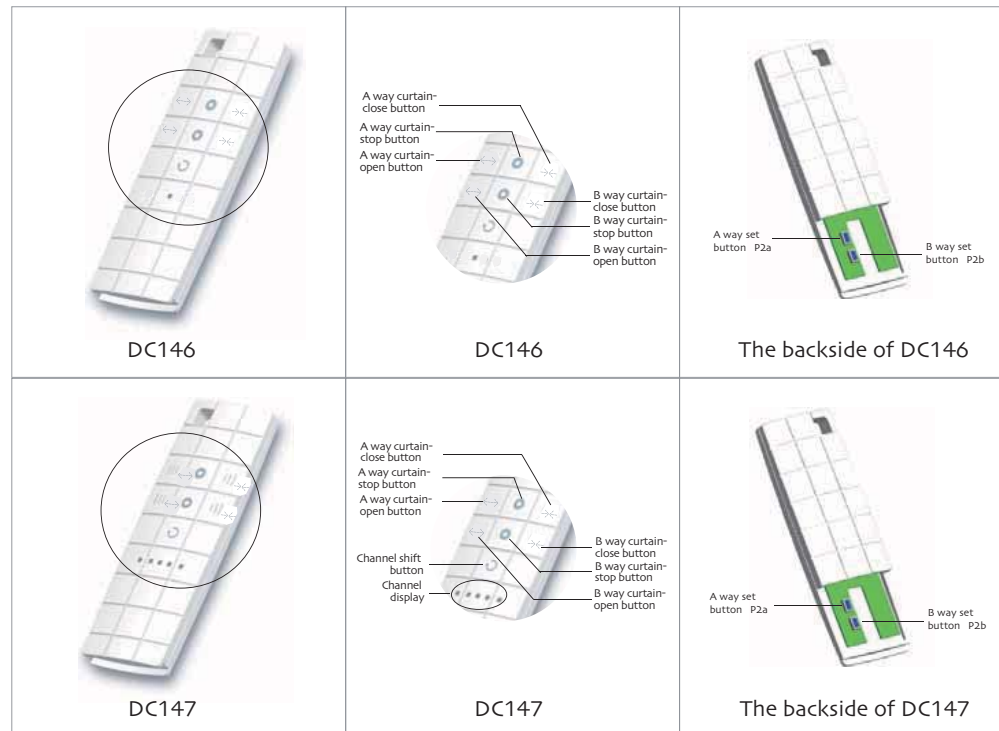
#### DC146 single channel double way emitter

#### DC147 five channels double way emitter

DC146 single channel double way emitter: A way and B way can be chosen, each way can control one set curtain motor separately. A way and B way don't interfere each other

DC147 five channels double way emitter: Each channel had the same function with DC146. When pressing channel-shift button and all the channel-shift display lamps light, that means the group control status. Under the status of group control, pressing A way buttons will start the group-control function of A way, A way of all the channels will be available. Pressing B way buttons will start the group-control function of B way, B way of all the channels will be available.

- Notice: transmitter Do not exposed to moisture and strike, so as not to affect life. When you use transmitter, if found emission distance obviously short or less sensitive, please change another same new battery. Please have batteries for recycling.





## Notices

Attention

This device complies with Part 15 of the FCC Rules. Operation is subject to the following two conditions: 1 this device may not cause harmful interference, and 2 this device must accept any interference received, including interference that may cause undesired operation. changes or modifications not expressly approved by the party responsible for compliance could void the user's authority to operate the equipment.

NOTE: This equipment has been tested and found to comply with the limits for a Class B digital device, pursuant to Part 15 of the FCC Rules. These limits are designed to provide reasonable protection against harmful interference in a residential installation. This equipment generates, uses and can radiate radio frequency energy and, if not installed and used in accordance with the instructions, may cause harmful interference to radio communications. However, there is no guarantee that interference will not occur in a particular installation.

If this equipment does cause harmful interference to radio or television reception, which can be determined by turning the equipment off and on, the user is encouraged to try to correct the interference by one or more of the following measures:

- Reorient or relocate the receiving antenna.
- Increase the separation between the equipment and receiver.
- Connect the equipment into an outlet on a circuit different from that to which the receiver is connected.
- Consult the dealer or an experienced radio TV technician for help.