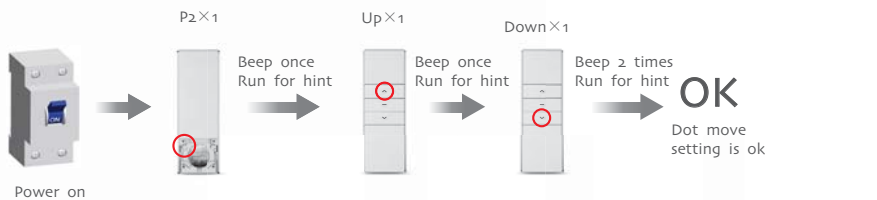


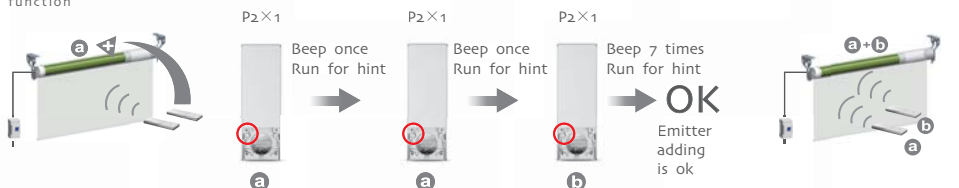
A Dot-move setting

Additional function



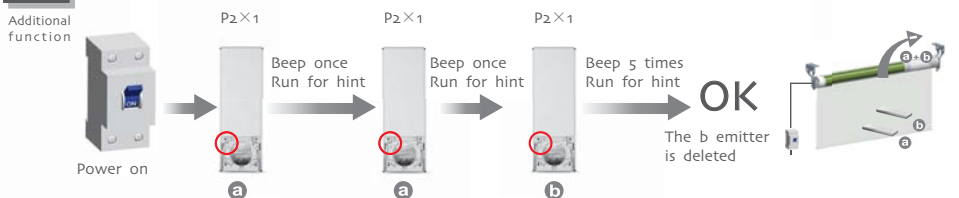
A Add Emitter

Additional function



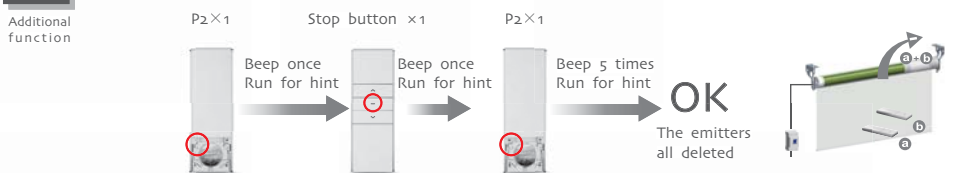
A Delete one emitter

Additional function



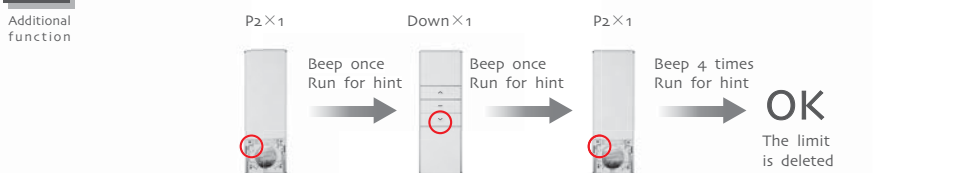
A Delete emitter

Additional function



A Delete limit

Additional function



DM25LE Tubular Motor Specification

Version NO.: A/05

T Technical support

Technical support

⚠ If the voltage is less than 10v, the motor will alarm for 10 times to prompt it needs to be charged every time when the motor is working.

- ⚠ ①It's strictly prohibited to beat the motor in transport ,storage, installation and use process. Please minimize the motor vibration.
- ⚠ ②It suggests need recharging please charge the battery for 3 hours and make sure its fully charged before the first use. please charge the battery every 6 months



DM25LE Tubular Motor

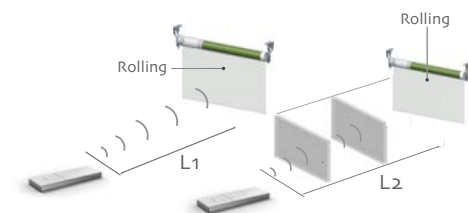
One motor maximum can store 20 channels, over 20 channels, if still need add new emitters, it will be repeating covered last channel.

- ⚠ ① Please set the limit position before use.
- ⚠ ② When in the group control mode,the setting up,deleting programme,setting limit are unworkable.

T Control range

Technical support

⚠ Effective transmitting distancemay have deviation due to actual environment



	L1 open	L2 partition	Emission frequency
	12V	200m	35m
			433.92/868 MHz

T Matchable emitter

Technical support

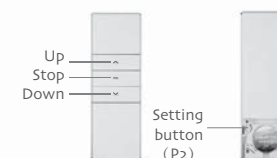
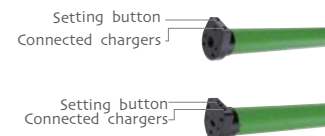


T Button specification

Technical support

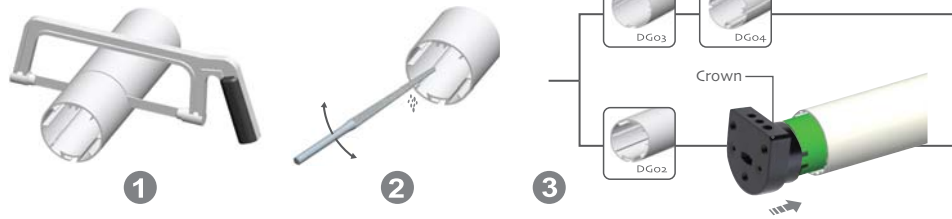
Press the set button on limit head once,the motor run upward,press the set button on limit head once,the motor will stop,press the set button on limit head again,the motor will run downward Long press the set button on limit head for more than 6s, the motor will run for hint,loose it, the motor will beep 2 times, then motor direction has been changed with the same limits as before; Long press the set button on limit head for more than 11s, the motor will run for hint,loose it, and beep 3 times ,then it will delete every memory and restore the factory settings;Restore factory settings, the first use of the motor, long press setting button;

E:Electronic / Electronic limit + Built-in receiver



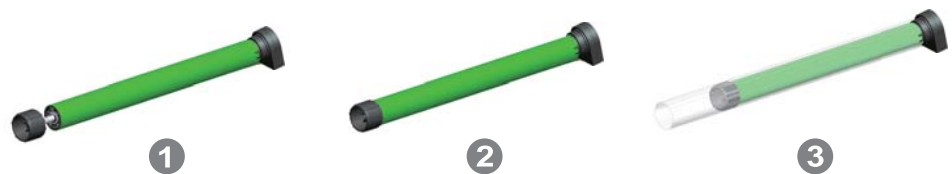
A Crown installation

Additional function



A Drive adapter installation

Additional function



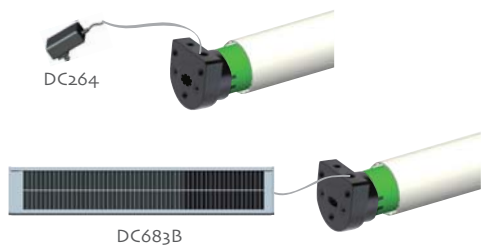
A Bracket installation

Additional function



A Rechargeable Description

Additional function



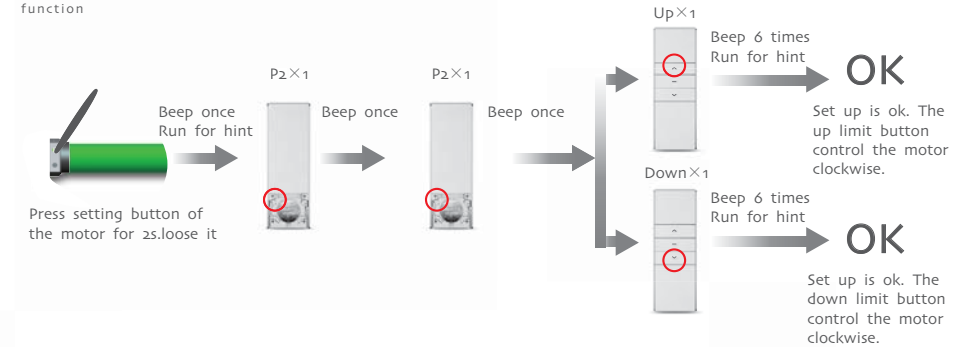
The motor has a built-in battery, using the charger DC264 (1.0Nm and 1.1Nm motor) to recharge. You can also use solar panels DC683B to charge; when the battery is low, insert the charge, charger light shows red light, batteries are full when the red light turns to green.

A Setting up

Additional function

During the settings, the time between two operation must be shorter than 6s, otherwise it will quit the setting

If the motor already experienced match code, the memory will be cleared if do it again. If you have matched the codes, connect to the power, the motor will work normally, if not, the motor will beep 1 time and turn to remind you entry

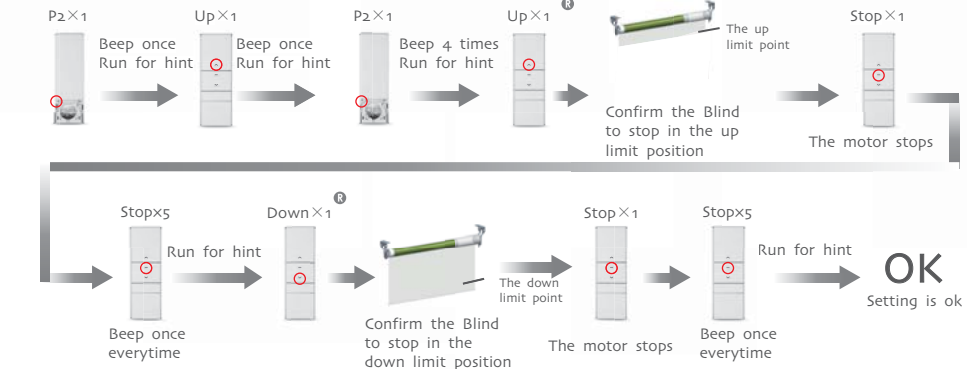


A Set up / down limit position

Additional function

① It is invalid when the up limit and down limit are at the same location
② After limit setting, with power and memory function;
③ into the match-code status 2 minutes later, it will quit out the setting limits status automatically

Ⓡ In the process of adjusting the up / down limit: when the motor moving up or down, press the setting button once, the motor will be under the step-moving status, press the setting button again to quit the step-moving status
Ⓢ The step-moving status: the motor will run up or down by the way of step-moving so that the limit position can be adjusted more correctly

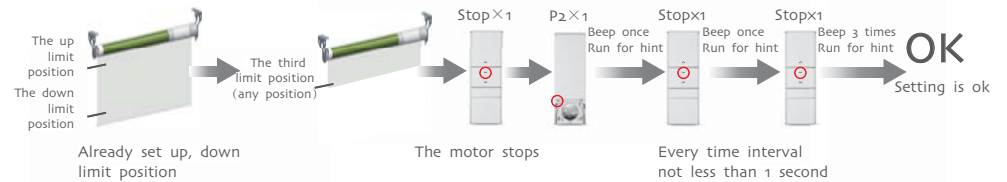


A The third limit position setting

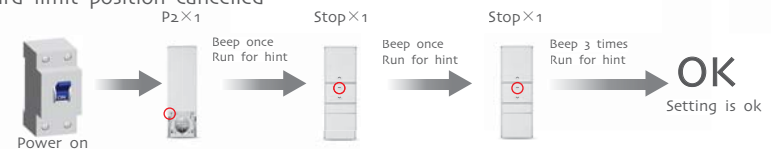
Additional function

Ⓣ After the up limit and down limit setting, you can set the third limit point between them as the half open position; ② The third limit point will be cancelled as the cancellation of limit and code matching; ③ Long press the stop button for 3s, the roller blinds will move to the third limit, if the motor is in the dot-move status, long press the stop button for 3s, the motor will move to the down limit firstly, then move to the third limit.

The third limit position setting



The third limit position cancelled



FCC STATEMENT

1. This device complies with Part 15 of the FCC Rules. Operation is subject to the following two conditions:

(1) This device may not cause harmful interference.

(2) This device must accept any interference received, including interference that may cause undesired operation.

2. Changes or modifications not expressly approved by the party responsible for compliance could void the user's authority to operate the equipment.

NOTE: This equipment has been tested and found to comply with the limits for a Class B digital device, pursuant to Part 15 of the FCC Rules. These limits are designed to provide reasonable protection against harmful interference in a residential installation.

This equipment generates uses and can radiate radio frequency energy and, if not installed and used in accordance with the instructions, may cause harmful interference to radio communications. However, there is no guarantee that interference will not occur in a particular installation. If this equipment does cause harmful interference to radio or television reception, which can be determined by turning the equipment off and on, the user is encouraged to try to correct the interference by one or more of the following measures:

- Reorient or relocate the receiving antenna.

- Increase the separation between the equipment and receiver.

- Connect the equipment into an outlet on a circuit different from that to which the receiver is connected.

- Consult the dealer or an experienced radio/TV technician for help.