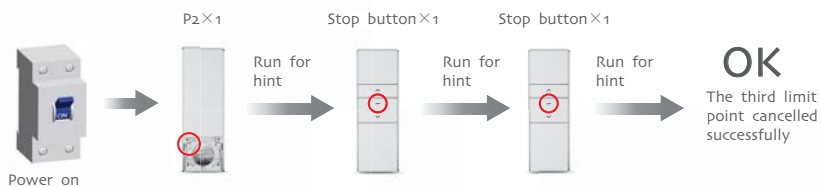
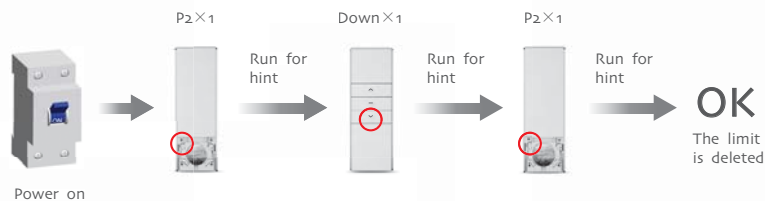


The third limit position cancelled



A Delete limit

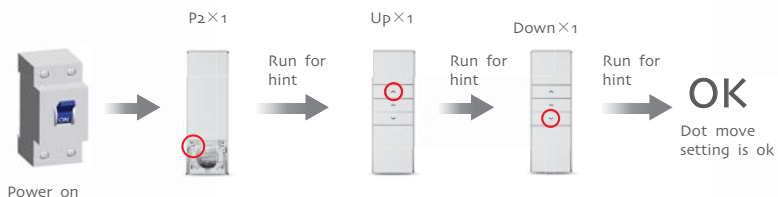
Additional function



A Dot-move setting

Additional function

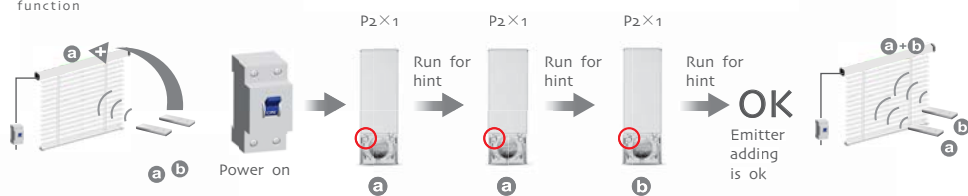
⚠ Repeat setting, function is cancelled



A Add Emitter

Additional function

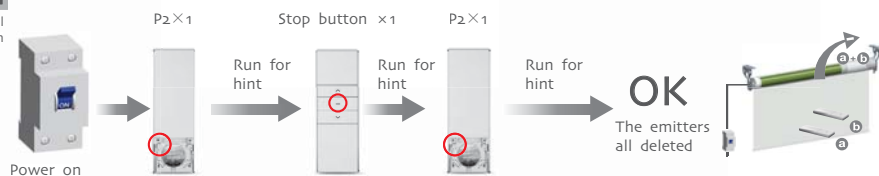
⚠ Emitter a is the one already matched code, while emitter b has not



A Delete emitter

Additional function

⚠ To clean up the emitter means deleting all the memory of emitter and limit switch in the motor receivers



DV24CE/L-0.6/34

Blind Motor Specification

Version NO.: A/00

T Technical support

Technical support



DV24CE/L

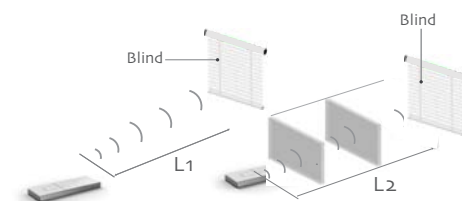
One motor maximum can store 20 channels, over 20 channels, if still need add new emitters, it will be repeating covered last channel.

- ⚠ Please set the limit position before use.
- ⚠ When in the group control mode, the setting up, deleting programme, setting limit are unworkable.

T Control range

Technical support

⚠ Effective transmitting distance may have deviation due to actual environment



| | L1 open | L2 partition | Emission frequency |
|--|---------|--------------|--------------------|
| | 12V | 200m | 35m |
| | | | 433.92/868 MHz |

T Matchable emitter

Technical support

⚠ For the emitters without setting button like DC1650, you can press up button and stop button at the same time to work as the same function as setting button.

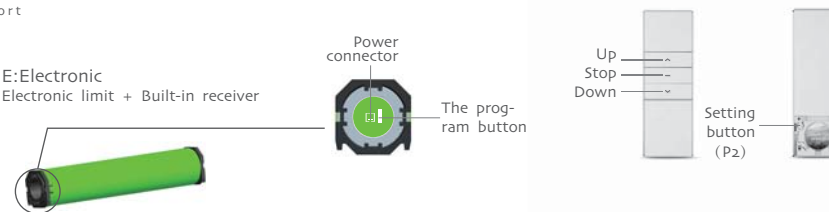


T Button specification

Technical support

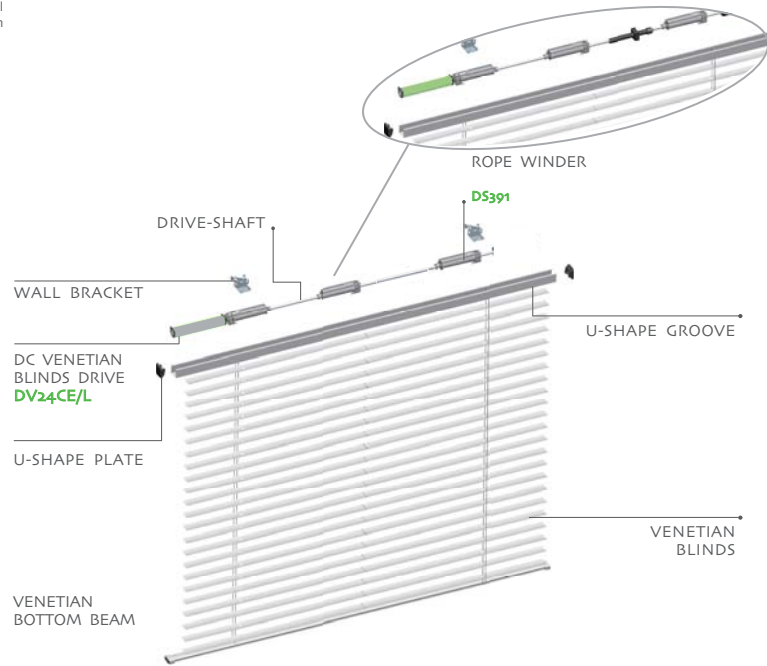
Press the set button on limit head once, the motor run upward, press the set button on limit head again, the motor will stop, press the set button on limit head again, the motor will run downward. Long press the set button on limit head for more than 5s, the motor will run for hint, lose it, then motor direction has been changed with the same limits as before; Long press the set button on limit head for more than 11s, the motor will run for hint, lose it, then it will delete every memory and restore the factory settings;

E: Electronic Electronic limit + Built-in receiver



A Installation of the motor

Additional function



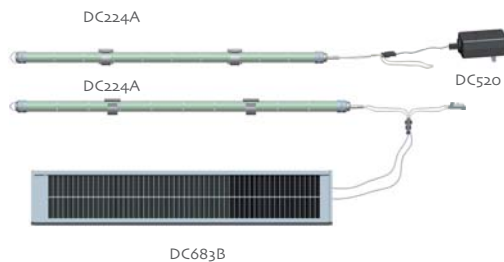
A Rechargeable Description

Additional function

12V Battery Pole (DC224(A))



① DV24DE can be charged by the charger DC240I(J/K) or the motor can get the power from the 12V battery pole; We have two types of battery pole, they are DC224 and DC224A (rechargeable)
 ② DC224A is rechargeable by solar panel DC683B or charger DC520.

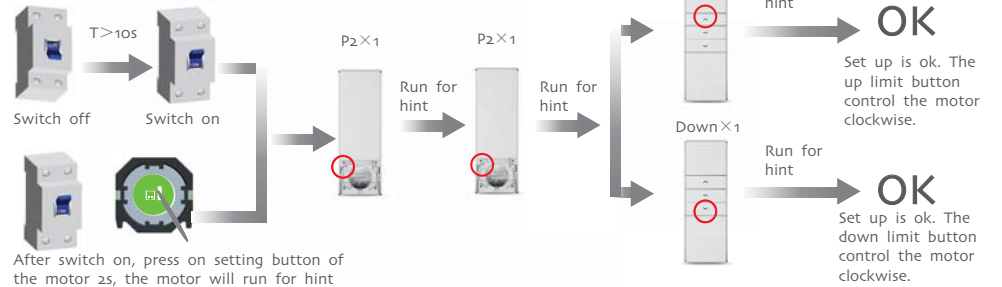


A Setting up

Additional function

During the settings, the time between two operation must be shorter than 10s, otherwise it will To exit the setting.

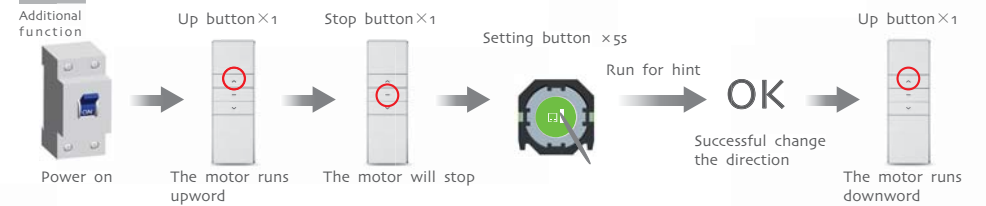
⚠ If the motor already experienced match code, the memory will be cleared if do it again



A The reverse of direction setting

Additional function

⚠ Repeat the reverse of direction setting operation, the direction of motor can be reverted in a loop

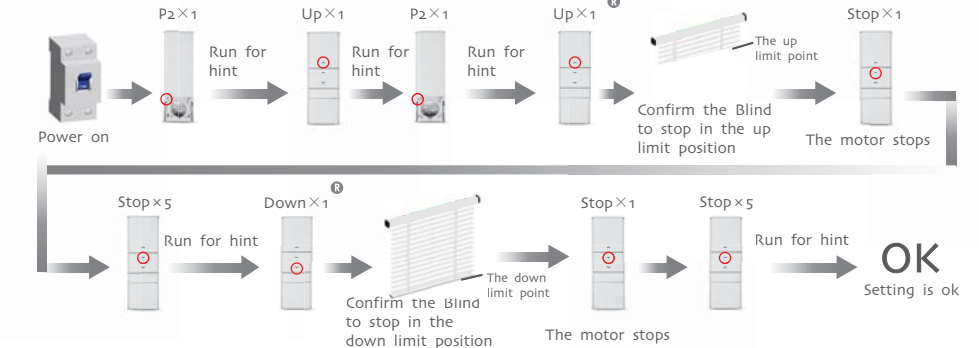


A Set up / down limit position

Additional function

⚠ ① It is invalid when the up limit and down limit are at the same location
 ② Must complete the down limit point to limit set;
 ③ After limit setting, with power and memory function;

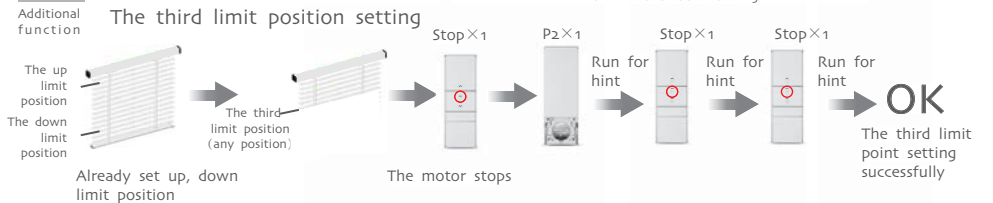
⚠ ④ In the process of adjusting the up / down limit: when the motor moving up or down, press the setting button once, the motor will be under the step-moving status, press the setting button again to quit the step-moving status
 ⑤ The step-moving status: the motor will run up or down by the way of step-moving so that the limit position can be adjusted more correctly



A The third limit position setting

Additional function

⚠ ① After the up limit and down limit setting, you can set the third limit point between them as the half open position
 ② The third limit point will be cancelled as the cancellation of limit and code matching



FCC STATEMENT

1. This device complies with Part 15 of the FCC Rules. Operation is subject to the following two conditions:

(1) This device may not cause harmful interference.

(2) This device must accept any interference received, including interference that may cause undesired operation.

2. Changes or modifications not expressly approved by the party responsible for compliance could void the user's authority to operate the equipment.

NOTE: This equipment has been tested and found to comply with the limits for a Class B digital device, pursuant to Part 15 of the FCC Rules. These limits are designed to provide reasonable protection against harmful interference in a residential installation.

This equipment generates uses and can radiate radio frequency energy and, if not installed and used in accordance with the instructions, may cause harmful interference to radio communications. However, there is no guarantee that interference will not occur in a particular installation. If this equipment does cause harmful interference to radio or television reception, which can be determined by turning the equipment off and on, the user is encouraged to try to correct the interference by one or more of the following measures:

- Reorient or relocate the receiving antenna.

- Increase the separation between the equipment and receiver.

- Connect the equipment into an outlet on a circuit different from that to which the receiver is connected.

- Consult the dealer or an experienced radio/TV technician for help.