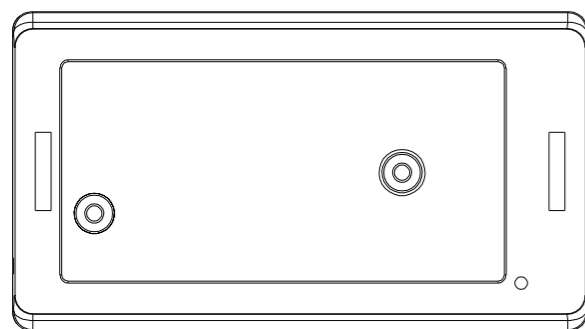
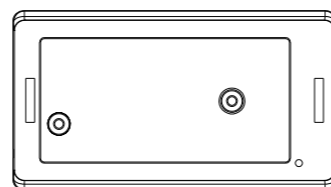


Venetian Blinds Motor- DV50CE Specification(A-03)



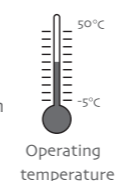
Product introduction

⚠ One Electronic motor maximum can store 20 channels,over 20 channels,it will be repeating covered in turn from second channel.



Product features:

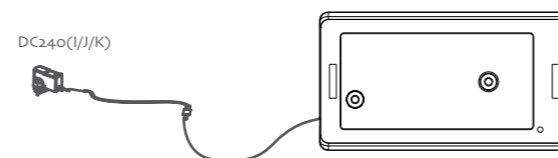
- Can match code,add code and delete code
- Limit position
- Only Dot-move & light-adjust function
- The reverse of direction setting
- Can set and delete motor limit position
- The third limit position setting



Parameters

Type	DV50CE-0.6N/10r
Rated Torque(N.m)	0.6N.m
Rated Current(A)	0.5A
Rated Voltage(V)	12V

Motor Installation



Note: The motor DV50CE can be charged by both the power adapter DC240(I/J/K) or the 12V supply electricity.

Operation note

⚠ Please read the following precautions before use:

1. Operating:

- ① The valid interval of the emitter button is 6s, the emitter will quit the set after 6s.
- ② The motor will run for a hint, please do the next step after the hint.

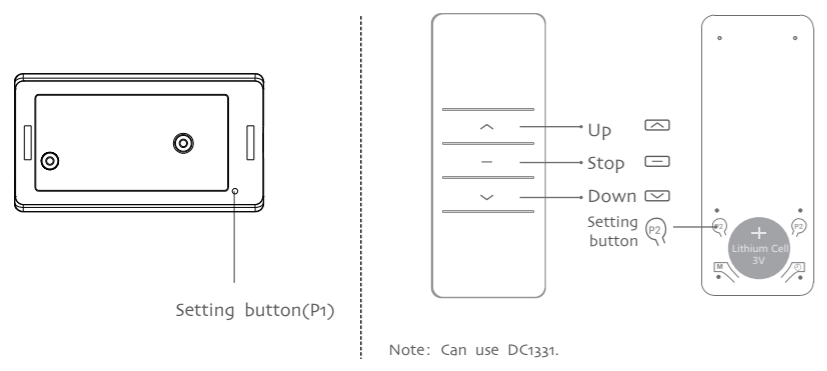
2. Set limit position:

- ① Before use, you have to set up/down limit position, and it is invalid when the up/down limit and the third limit are at the same location.
- ② After limit setting, with power and memory function.
- ③ It will exit limit setting when program there is no operation for 2 minutes.
- ④ It will delete every memory and restore the factory settings.

3. If the emitter is lost, please set up again with a new emitter.

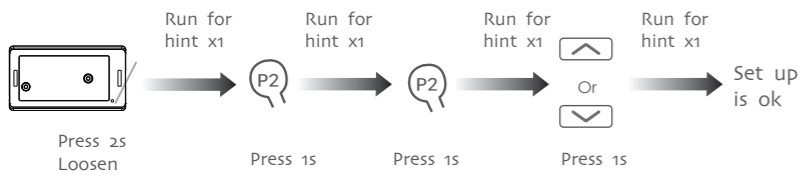
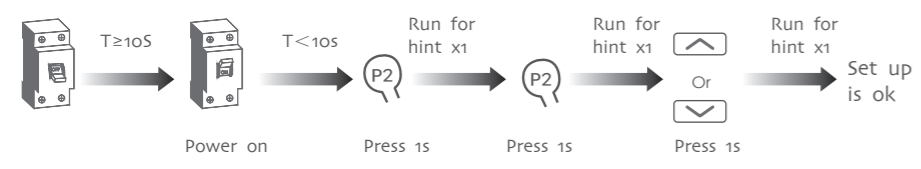


Button specification



1 Setting up

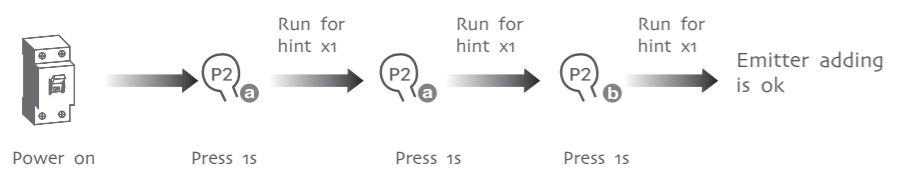
P2→P2→Up/ P2→P2→Down



Note: When the transmitter will not be prompted to rotate once, does not turn the transmitter when prompted.

2 Add Emitter

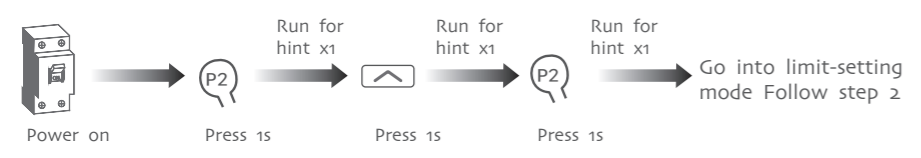
P2 a → P2 a → P2 b



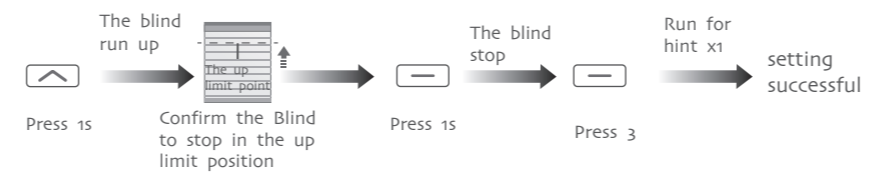
Note: Emitter a is the one already matched code, while emitter b has not.

3 Limit position

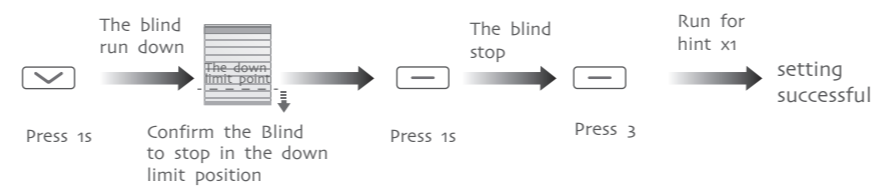
1, Go into limit-setting mode P2→Up→P2



2, Set up limit position Up→Stop→Stop

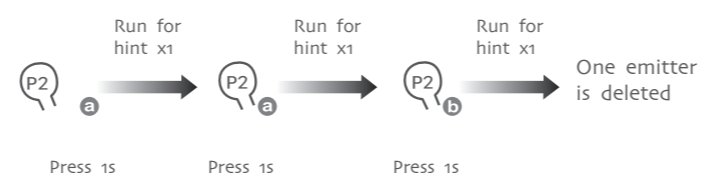


3, Set down limit position Down→Stop→Stop



4 Delete one emitter

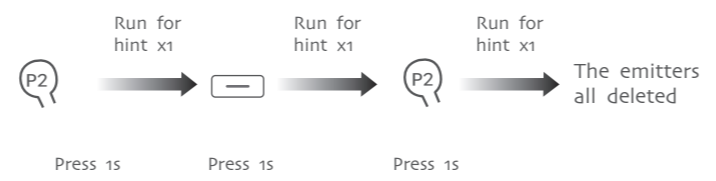
P2 a → P2 a → P2 b



Note: a b with the same method, you only can delete the emitter b not the emitter a

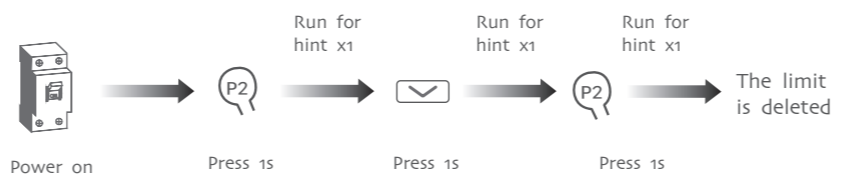
5 Delete all emitter

P2→Stop→P2

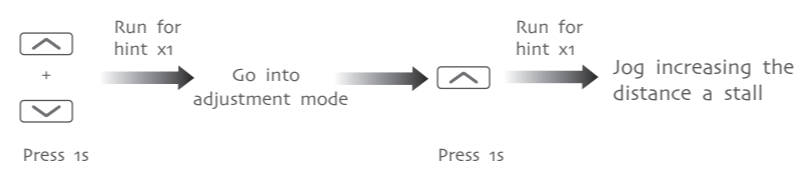


6 Delete limit

P2→Down→P2

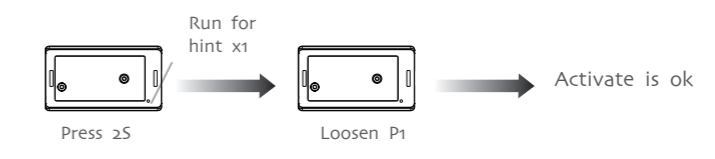


7 Dot-move setting

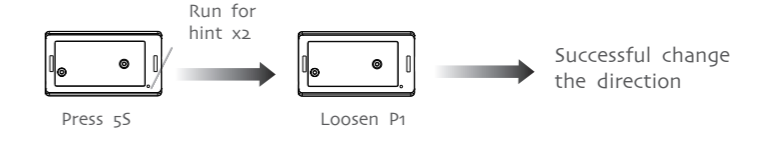


P1 button setting

1, Activate motor for the first time



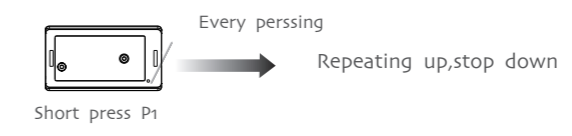
2, The reverse of direction setting



3, Restore factory settings

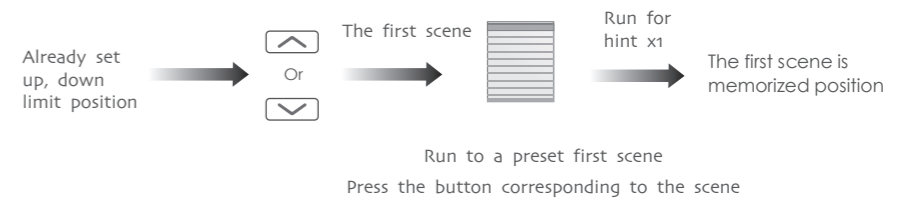


4, Short press function



Note: ①This operation is void under sleeping status; ②Must be in active status, this operation is valid.

With special transmitter instructions



Note: ①After a short time you press a scene setting, motor running position automatically to the first scene, the other profiles and so on; ②Motor at the corresponding point of the scene (the scene has been set for this point), press the corresponding scene button, the motor rotates one time, this position is deleted scenes; ③Special remote control for the DC2150I, DC2150J, DC2152J, DC2152L.

Common troubleshooting

NUMBER	PHENOMENON	REASON	PROCESSING METHOD
1	The motor is not running	a, The emitter is not matched. b, If press P1 button for a long time while with no reaction. may be the power is short-circuit or the circuit board or the motor is broken.	a, Set up the match code b, Contact the engineers for after-sales

Warning:

This device complies with Industry Canada RSS-210. Operation is subject to the following two conditions: (1) this device may not cause interference, and (2) this device must accept any interference, including interference that may cause undesired operation of the device.

Le présent appareil est conforme aux CNR d'Industrie Canada applicables aux appareils radio RSS-210. L'exploitation est autorisée aux deux conditions suivantes :

- (1) l'appareil ne doit pas produire de brouillage, et
- (2) l'utilisateur de l'appareil doit accepter tout brouillage radioélectrique subi, même si le brouillage est susceptible d'en compromettre le fonctionnement.

The device meets the exemption from the routine evaluation limits in section 2.5 of RSS 102 and compliance with RSS-102 RF exposure, users can obtain Canadian information on RF exposure and compliance.

Le dispositif rencontre l'exemption des limites courantes d'évaluation dans la section 2.5 de RSS 102 et la conformité à l'exposition de RSS-102 rf, utilisateurs peut obtenir l'information canadienne sur l'exposition et la conformité de rf.

This transmitter must not be co-located or operating in conjunction with any other antenna or transmitter. This equipment should be installed and operated with a minimum distance of 5 mm between the radiator and your body.

Cet émetteur ne doit pas être Co-placé ou ne fonctionnant en même temps qu'aucune autre antenne ou émetteur. Cet équipement devrait être installé et actionné avec une distance minimum de 5mm entre le radiateur et votre corps.

FCC Warning :

1. This device complies with Part 15 of the FCC Rules. Operation is subject to the following two conditions:

(1) This device may not cause harmful interference.

(2) This device must accept any interference received, including interference that may cause undesired operation.

2. Changes or modifications not expressly approved by the party responsible for compliance could void the user's authority to operate the equipment.

NOTE: This equipment has been tested and found to comply with the limits for a Class B digital device, pursuant to Part 15 of the FCC Rules. These limits are designed to provide reasonable protection against harmful interference in a residential installation.

This equipment generates uses and can radiate radio frequency energy and, if not installed and used in accordance with the instructions, may cause harmful interference to radio communications.

However, there is no guarantee that interference will not occur in a particular installation. If this equipment does cause harmful interference to radio or television reception, which can be determined by turning the equipment off and on, the user is encouraged to try to correct the interference by one or more of the following measures:

- Reorient or relocate the receiving antenna.

- Increase the separation between the equipment and receiver.

- Connect the equipment into an outlet on a circuit different from that to which the receiver is connected.

- Consult the dealer or an experienced radio/TV technician for help.