

# User Manual



**Dear customer:**

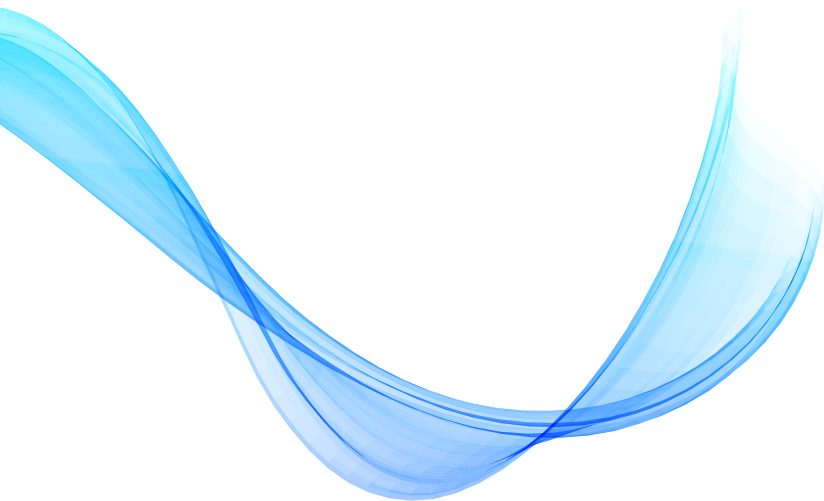
First of all, thank you for your trust in our products. In this world, we met and reached an agreement. Your trust is our most precious gift, and we are very honored and cherished!

If you are satisfied with our products, please share with your family and friends. At the same time, please pay attention to whether there are related praise gift activities on the homepage of the purchased sales platform product. We sincerely look forward to your participation and hope that you can click on all the stars in the evaluation as an encouragement to our customer service.

Your evaluation is the life of our company's sustainable development! If you have any questions or help about our products, please contact us as soon as possible through the Amazon website, so that we have the opportunity to provide you with timely and effective help and give us praise. Thank you very much for your tolerance and support!

I wish you and your family health and happiness forever. All the staff of All of our employees are looking forward to seeing you again!

——Brand Division



# Contents

## **1. Precautions before Use, Intended Use**

## **2. Introduction to Desktop**

## **3. Basic Operations**

- 1.Sleep, restart and shut down
- 2.WIFI、Bluetooth、Flight mode
- 3.Cortana
- 4.System and BIOS ----- system reset  
---- BIOS-setting&Bootmanager
- 5.Battery charging

## **4. Troubleshooting**



### **Important Notes:**

Charge the battery for at least 12 hours before initial start-up.

## Parameter configuration

1. This product is suitable for use in non-tropic areas below 2,000 meters
2. Prevent this product from falling to the ground it could be strongly damaged.
3. Keep the device away from rain, moisture, direct sunlight and heat source.
4. Avoid using it in the strong magnetic and strong static environment as much as possible.
5. Once any water or other liquid splashes onto this product, close it immediately and do not use it until it dries out.
6. Do not clean this product with any detergent containing chemical elements or other liquid to avoid causing damage due to corrosion and becoming damp. If cleaning is really necessary, clean it with dry soft cloth tissue paper.
7. Handle the screen gently. To clear fingerprints or dust on the screen, use soft cloth dedicated for camera lens instead of gauze.
8. Please back up your important files at any time to avoid loss.
9. Please do not disassemble this product by yourself; otherwise you will lose the right to warranty.
10. Do not disconnect the device from power suddenly when formatting or up to ad in g and downloading, which can lead to program errors.
11. Please use the original AC adapter for charging. Nonconforming chargers may cause harms.
12. Protect the power cord. When connect the power cord, do not step onto it or place any object on it, which may cause extrusion. Protect the connector of the power cord connected devices specially.
13. Batteries

The batteries in this product can not be easily replaced by users themselves. Replacement with incorrect type batteries may cause explosion.

14. While using the earphone, if the volume is excessively high it may cause hearing damage. So please adjust the volume of the player to a moderate level and balance the time of using.

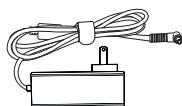
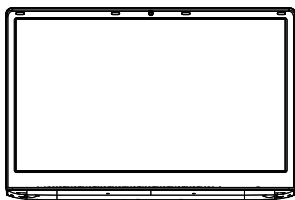
15. Pictures in this manual are for demonstration purpose only and may differ from the real product.

16. Caution!

This unit contains battery. If the battery is defective, it should not be disposed of with household Waste Batteries can possibly contain harmful substances that can harm the environment and peoples health. Please dispose of the battery commercially or at a municipal recycling plants. Return is free of charge and is prescribed by law. Please only dispose of empty batteries in the containers provided and tape the terminals.

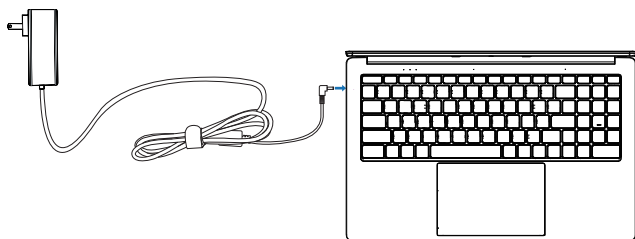


## Accessories



Power Adapter

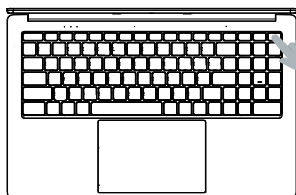
## Quick installation of laptop.



Plug in the adapter to power and charge the battery at the same time.

## Use of laptop.

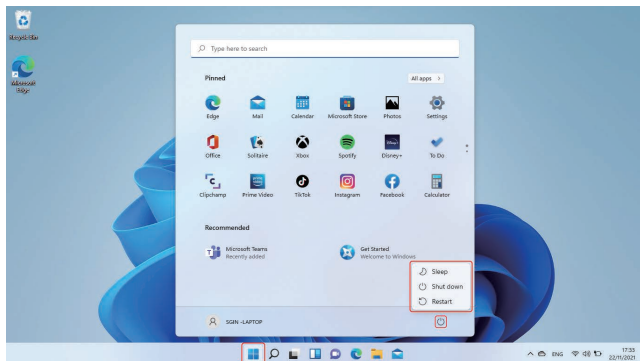
### Boot steps.





Quickly press the power button to turn on the Laptop.

When the laptop screen lights up, please wait patiently for some time and follow the system prompts to enter the system.

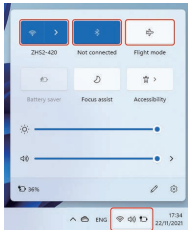
## Sleep , restart and shut down.



Same experience as you use Desktop PC. Click the  on the bottom taskbar, and then click the . Finally, in the pop-up menu options, you can choose hibernation, shutdown or restart.

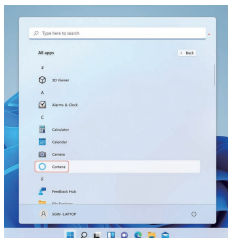
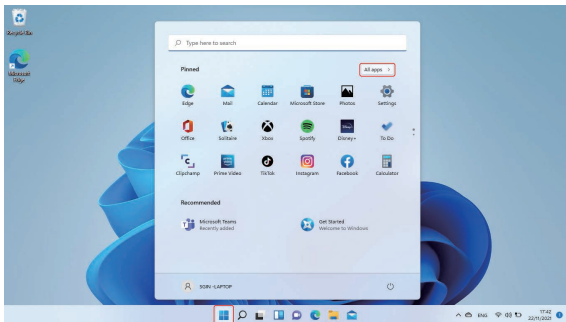
## Use WIFI to connect to the Internet

## Wi-fi, Bluetooth, Flight mode



Touch to Open Setting Tablet to set up  
Airplane mode / WI-FI / & Bluetooth, and  
this device can connect to 2.4G and 5G Wifi.

**cortana**

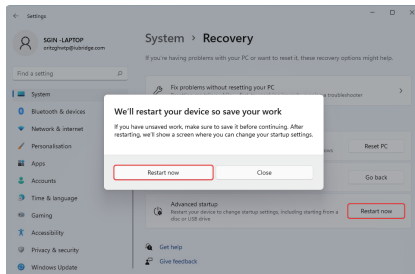
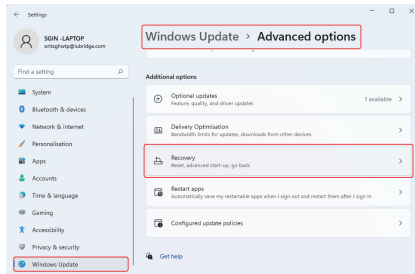


You can use Cortana ( voice control ) to set reminders, write emails, search, and chat with friends and family on messengers.

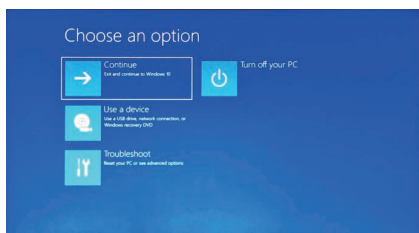


# System reset

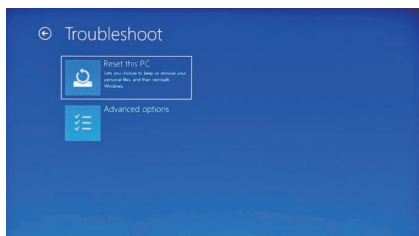
**Notice:** The Reset progress will take around 3-5 hours, in order to finish the Reset successfully, please connect the adapter to charge the device during the whole Reset progress.



Click the left mouse button on the  button in the lower left corner of the desktop. Select "Advanced options" → select "Windows Update" → select "Advanced options", select "Recovery" → select "Advanced startup" → find "Restart now" and click the left mouse button → select the "Restart now" button in the pop-up window;



Press Troubleshoot, below content will show up.





Press "Reset this PC" to fix the software error.

## BIOS-Setting & Bootmanager

Press and hold "ESC" button of keyboard immediately after switch on the device by pressing power button. Then different options will appear. Choose option "SCU" for BIOS setting and "Boot Manager" for operating system boot option.

## Battery charging

Connect power adapter to the power port of the device. Connect the power adapter plug into a power outlet for charging the battery. Please only use the provided original power adapter.

During charging, the icon of battery will be , and when charging completes, the icon will be .

You can still use the device while charging, but this will extend the charging time.

Use the device at least once a week.

Fully charge the battery regularly.

Do not leave the battery empty for a long time.

# Troubleshooting

## 1. Can not turn on the device

Please make sure you have connected the power cable to the correct port, charge it for 30 minutes before you press the power button.

## 2. No sound from earphone

Check if volume is set to "0". Test if earphone is broken, if so .please change for another earphone.

## 3. Big noise

Check if there is dust in the earphone or speaker. Check if the sound file is broken.

## 4.Screen drift or unresponsive screen

Switch off the device by a long press (approx. 30 sec.) of the power button.  
(Do not use this way to switch off the device unless it is necessary.)

## 5. Windows key cannot active immediately

First, make sure the Wi-Fi is connected and the Wi-Fi network is a working network. Second, make sure the time zone and system time is correct in your location. (Windows key active delay may happen sometimes because of the network speed or other reason if you make sure the above two points are correct and the key still cannot active. Kindly contact with our service team please. We will support you immediately)

## 6. How to enter desktop interface when first time starting up.

Follow the Microsoft Windows 10 starting up guide step by step to enter the desktop interface.

## 7. Why my device has already been registered by account name of "default user 0" .

This is a common software error may happen in Windows 10 when user starting up the device First, press the power button for 5-8 seconds to shut down the device. Do this 3 times, and then power on the device, below content will show up.

## 8. Why when I press the keyboard character, in the system it shows another one?

This may happen because you choose the wrong language when you first time turn on the device. Below is the method to correct the language and input. Choose windows home button at the left bottom side of the desktop.

9.Windows automatic update may cause some issues recently, below is the method of how to open or close the automatic update function. Click mouse right button(Laptop) on the windows home button at the left bottom side of the desktop. Choose "Task Manager" choose "More details, choose "Services"→ choose "Open Services"→find "Windows Update" click mouse right button (Laptop) on it→ choose "Properties"→ find Startup type and choose the option you want. There are 4 options. Automatic (Delay Start)/Automatic/Manual/Disabled.

### **10.** A large red X icon appears on the laptop screen

This means low battery, please make sure you connect the power cable to the power port and not the audio jack.

### **11.** Touch pad is not working

You can try the following 3 methods:

(1) Remove the battery and the adaptor from the laptop and any external devices, then press and hold the power/ start button for 30 seconds and release. Then start the laptop.

(2) Press the following key combinations to enable/disable the Touchpad

- Ctrl+ESC / Ctrl+F3

(3) Reinstall touchpad drivers

- Open Device Manager.

- Right-click the name of the device, then select Uninstall device.

- Select Uninstall and then restart your PC.

- Windows will attempt to reinstall the driver.

If Windows doesn't find a new driver and reinstalling the driver doesn't help, please contact our support email on the last page of the manual to get the latest driver.

### **12.** Constant Restarting

You can update your drivers and software, complete a system scan for malware, check for overheating, and examine recent modifications. If the problem persists, please contact our support email on the last page of the manual.

### **13.** Taskbar Disappeared

- Press the "Windows logo key + I" to get to Settings.

- Select Personalization.

- Select Taskbar.

- Scroll down to Taskbar behaviors. Expand the option and uncheck "Automatically hide the taskbar".

### **14.** WIFI function cannot be activated during initial Windows setup

Note: This is only applicable to the initial setup when the wifi function cannot be activated.

(1) Press and hold these three keys "Ctrl+Shift+F3" at the same time until the small "System Preparation Tool" window pops up.

(2) Left-click the network icon in the lower right corner, when the WIFI icon changes from gray to dark blue, it means the WIFI function is activated.

(3) Click the "OK" button in the pop-up window on your computer desktop, and your computer will automatically reboot to the startup screen so that you can proceed with the normal startup steps.