

# MiCard Card Readers



## Installation Guide

**MiCard version 1.0**

**English**

Version:	1.0			
Date:	June 6, 2009			
First Draw-up Date:	July 27, 2007			
Author:	Claudia Kleinekemper			
Revision history:	Version:	Revision date:	Reviewer:	Final Review:
	1.0	23.08.2007	Michael Rosemann	Michael Rosemann
Technologies concerned:	uniFLOW Login manager/Secure Public Printing Applet v2.1.0			
File name:	MiCard_installation_guide_EN.doc			

#### Short Summary:

This manual describes the features and the installation of the MiCard Readers.

## Index

Introduction	4
Scope of supply	4
Requirements	5
System Setup	6
LED Status	6
Configuration	7

## Introduction

MiCard provides an easy to use, easy to install and cost effective solution for identification with a contactless card at your Canon iR. With MiCard you simply wave your card over the reader and you will be identified. After identification the Canon iR opens up and you are able to make your copies or pick up your secure print jobs.

Installation and configuration has never been easier. You simply connect the MiCard via USB directly to the device. Even power is supplied via USB, thus providing a cost effective solution by removing the expense normally required for an additional interface. After connecting MiCard to the device, it will automatically be recognized and configured by the in the Canon iR integrated uniFLOW MEAP application.

There are many different technologies for Remote Frequency Identification (RFID) on the market. Therefore, for additional flexibility, MiCard is available in 3 different versions, MiCard HiTag, MiCard Legic/MiFare, and MiCard HID Prox, all supporting different RFID frequencies and technologies.

The new series MiCard V2 consists of the three models: MiCard V2 HID, MiCard V2 HiTag and MiCard V2 Multi.

The uniFLOW MEAP application embedded in the Canon iR will also make your life in the office easier. You can use it for printing confidential information securely. Simply select the print job you want to print directly from the control panel of the Canon iR, without the risk of interception by others.

Additionally it can be used for charging back copy jobs to cost centres, departments or customers, printing of general/internal company documents, or the authentication into other applications like for instance eCopy.



## Scope of supply

The MiCard reader package consists of the MiCard Reader itself and the appertaining connection cable.

## Important Note:


Changes and/or modifications of the MiCard not approved by NT-ware Systemprogrammierung GmbH will void the user's authority to operate the MiCard!

## FCC Compliance Note:

This equipment has been tested and found to comply with the limits for a Class B digital device, pursuant to part 15 of the FCC Rules. These limits are designed to provide reasonable protection against harmful interference in a residential installation. This equipment generates, uses and can radiate radio frequency energy and, if not installed and used in accordance with the instructions, may cause harmful interference to radio communications. However, there is no guarantee that interference will not occur in a particular installation. If this equipment does cause harmful interference to radio or television reception, which can be determined by turning the equipment off and on, the user is encouraged to try to correct the interference by one or more of the following measures:

- Reorient or relocate the receiving antenna.
- Increase the separation between the equipment and receiver.
- Connect the equipment into an outlet on a circuit different from that to which the receiver is connected.
- Consult the dealer or an experienced radio/TV technician for help.

## Requirements

Rating: 5 V 

USB 1.1 Full Speed

Ambient temperature 0 ... +50 °C

### Canon iR:

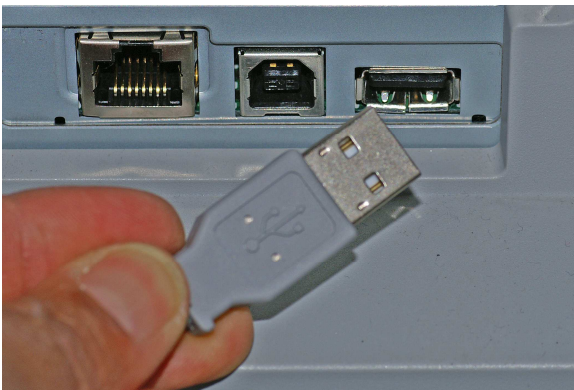
- has to be MEAP enabled
- USB Application Interface board of the respective iR
- uniFLOW Login Manager/Secure Public Printing Applet v2.1.0

### uniFLOW OM:

- uniFLOW OM/RPS v3.1 required /  
uniFLOW OM / RPS v3.1.1. recommended

## System Setup

- Ensure the MFP is equipped with the USB Application Board.
- The uniFLOW Login Manager and / or uniFLOW Secure Public Printing Applet v2.1.0 should be installed and running on the MFP. For installation of the Login Manager and the uniFLOW OM MEAP Applets please see the uniFLOW OM User Manual.
- Connect the MiCard reader to the USB Host Connection of the MFP (See photo below. Please be aware that the arrangement of the USB connection may vary depending on the model of the copier).



The power supply for the MiCard reader is effected via the USB connection.

- The MiCard beeps twice and the red and green LED flash twice when being connected.

## LED Status


The MiCard readers are equipped with 3 status LEDs: green (left hand), yellow (middle) and red (right hand). The table below shows the status information given by the respective LED.

Status	Green LED	Yellow LED	Red LED
Booting up	flashing		flashing
Not synchronized			flashing
Synchronized (operating)		flashing	
Authentication OK	on	flashing	
Authentication failed		flashing	on

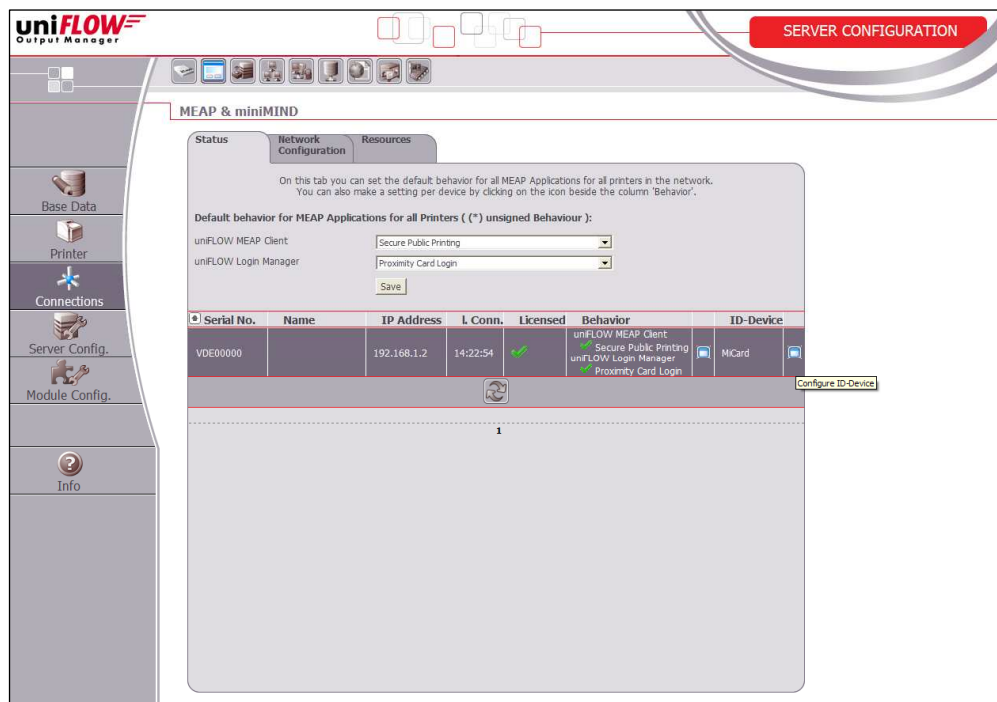
## Configuration

The MiCard device is working without further configuration; however some “advanced” options are available.

When using uniFLOW OM v3.1.1 you can see the connected MiCard readers on the MEAP/miniMIND status tab of the main menu “Connections”.

By clicking on  in the ID Device column a new window opens showing the advanced options. When using uniFLOW OM 3.1 you won't see the connected MiCard readers in the status overview, but you can open the configuration page using this URL:

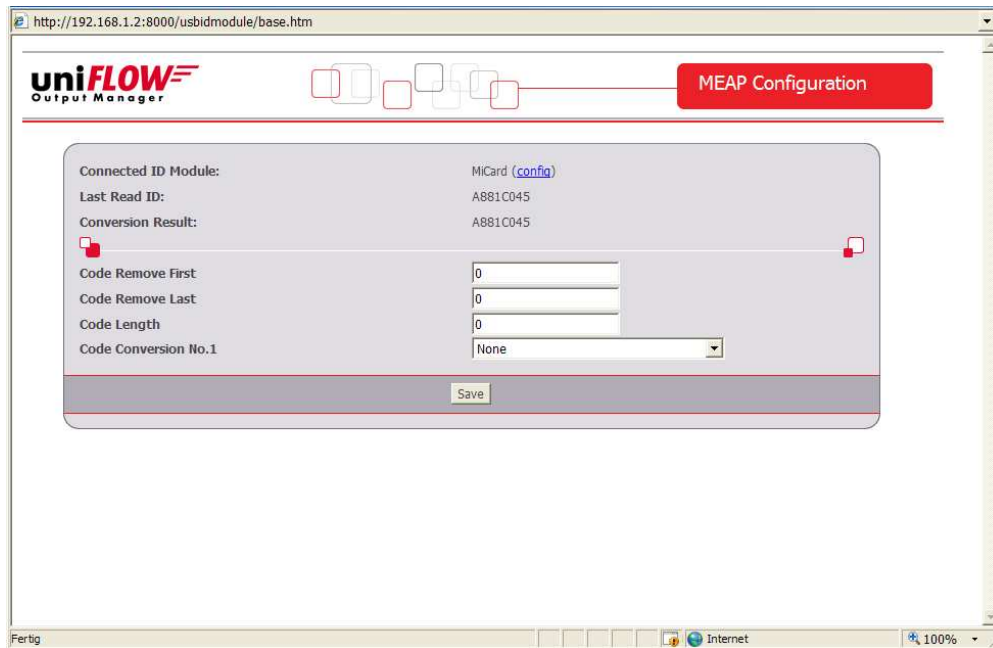
<http://<MFP-IP>:8000/usbmodule/base.htm>



The screenshot displays the 'SERVER CONFIGURATION' page for 'MEAP & miniMIND'. It features a sidebar with navigation icons and a main content area with tabs for 'Status', 'Network Configuration', and 'Resources'. The 'Status' tab is active, showing default behavior settings for MEAP Applications and a table of connected devices.

Serial No.	Name	IP Address	L Conn.	Licensed	Behavior	ID-Device
VDE0000		192.168.1.2	14:22:54	✓	unFLOW MEAP Client ✓ Secure Public Printing unFLOW Login Manager ✓ Proximity Card Login	NiCard

The Configuration page will look like in the screenshot below.



In the following please find an explanation of the terms used and the possible settings on the configuration site:

**Connected ID Module**

shows the ID Module connected, e.g. MiCard / miniMIND

**Last Read ID**

shows the last ID read by a card swipe

**Conversion Result**

shows the result of the last read ID when the configured code conversions are applied. This is the ID sent to the server for authentication.

**Code Remove First**

specifies the number of characters to be removed from the ID read before the code conversion takes place. For instance a value of 3 applied to A881C045 will result in 1C045.

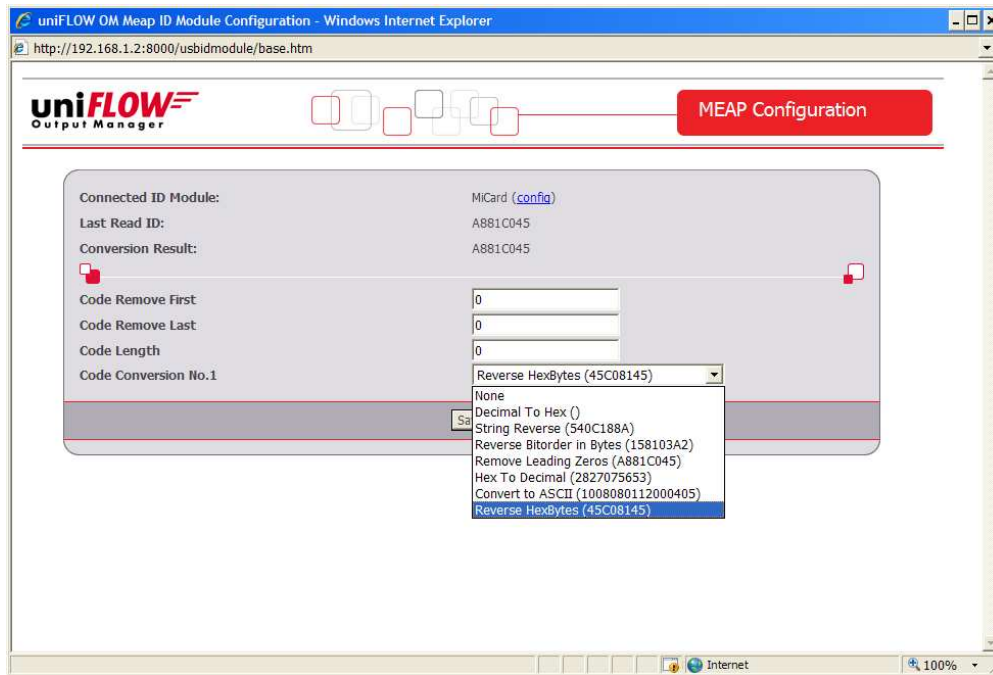
**Code Remove Last**

specifies the number of characters to be removed at the end of the ID read before the code conversion takes place. For instance a value of 3 applied to A881C045 will result in A881C.

**Code Length**

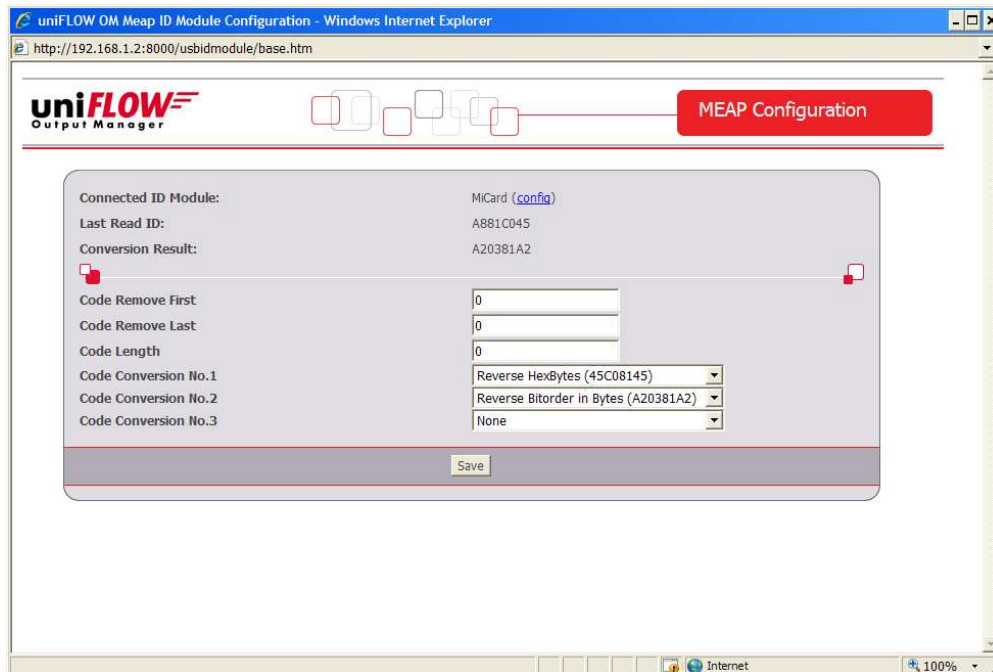
specifies the code length applied after the code conversion. For instance a value of 6 applied to A881C045 will result in A881C0, whereas a value of 10 applied to A881C045 will result in 00A881C045.





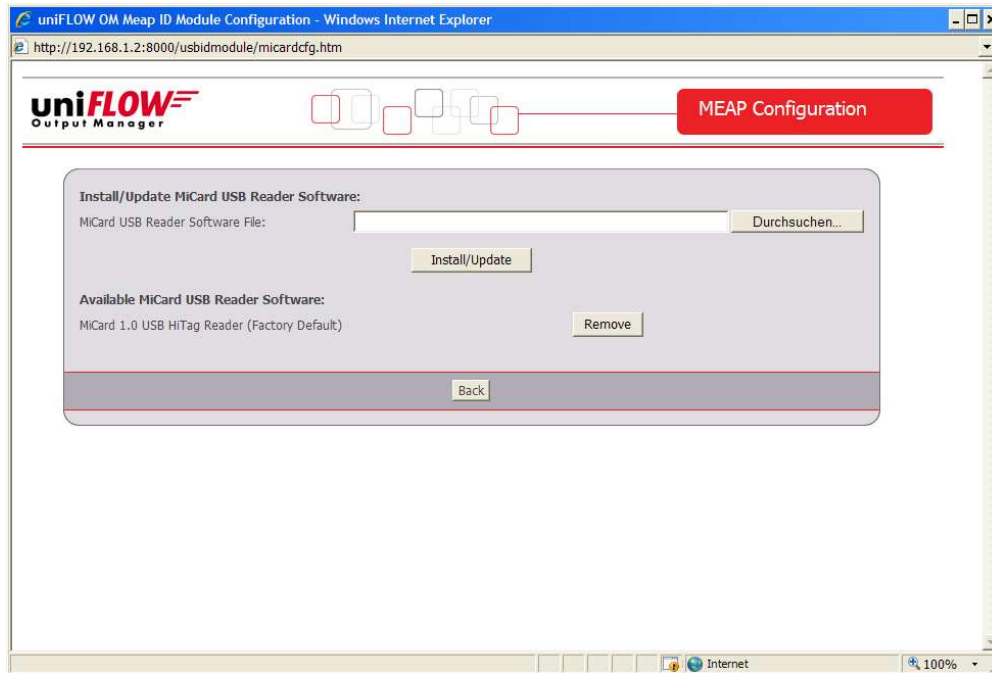
### Code Conversion No. [N]

specifies the code conversion that has to be applied to the ID read in a series of code conversions at step [N]. The result of the code conversions at step [N] is displayed next to the name of the code conversion in the drop down list. If the result is empty "()", this code conversion can't be applied in the actual step (cf. screenshot above).



After a code conversion step [N] is saved by clicking the "Save" button the configuration page will allow to specify code conversion step [N+1] as shown in the screenshot above.

Next to the name of the Connected ID Module in the configuration page (MiCard) you can click on a link (*config*) which will bring up the page shown below.



With uniFLOW Login Manager v2.1.0/uniFLOW Secure Public Printing Applet v2.1.0 this can't be used at the moment and is for future purposes only.



NT-ware Systemprogrammierung GmbH  
Niedersachsenstarsse 6 · 49186 Bad Iburg · Germany  
info@nt-ware.com · <http://www.nt-ware.com>

Copyright © 2009 NT-ware Systemprogrammierung GmbH