



BTM60

INSTALLATION/QUICK START GUIDE

Wireless Bluetooth Module



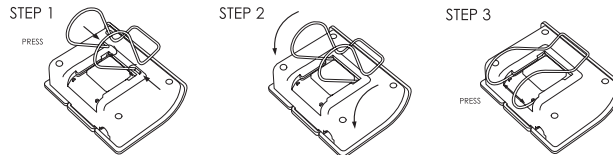
DRAFT





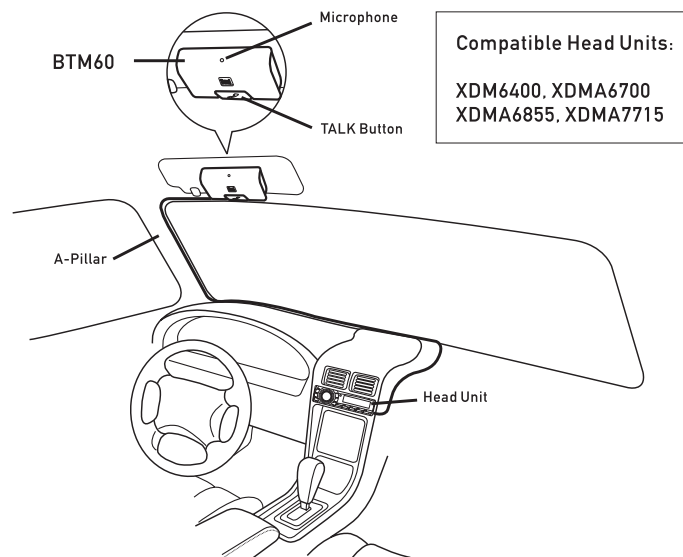
BTM60 INSTALLATION

Typical Installation



Installation Quick Reference

- Attach the mounting clip into the guide holes, and clip secure onto the BTM60 module as seen in the picture above.
- Mount the BTM60 onto the visor using the using the mounting clip, ensuring the microphone is facing the driver. Refer to the picture below for reference.
- Carefully route the attached wire down the A-pillar of the vehicle, then to the back of your Dual Bluetooth® Ready head unit.
- Plug the BTM60 connector into the corresponding connector on the back of the head unit. Ensure to line up the arrows before connecting. Refer to the owner's manual for your head unit for more information.





Quick Start Guide

Note: You must first pair and connect your Bluetooth® mobile device to the BTM60 before proceeding with the following operations. See your head unit owner's manual for pairing, and detailed operation instructions.

Receiving a Call

- When the BTM60 detects an incoming call, your head unit will automatically switch to Bluetooth mode, and display the caller ID phone number.
- To receive an incoming call, press **TALK** on the BTM60 or your head unit when the phone is ringing.
- During a phone call, press **TALK** to activate the call waiting feature. Press **TALK** once more to return to the original call.
- To reject an incoming call or to end the current call, press and hold **MUTE** on the head unit for 3 seconds.

Placing a Call

- To make a call using the head unit, first press **TALK** or **MODE** to change to Bluetooth standby mode.
- While in Bluetooth standby mode, press **TALK** to enter the dialing screen.
- From the dialing screen, enter the phone number using 0-9, *, # on the front panel of the head unit.
- Once the number is entered, press **TALK** to place the call.



BTM60 WARRANTY

Limited One Year Warranty

This warranty gives you specific legal rights. You may also have other rights which vary from state to state.

Dual Electronics Corp. warrants this product to the original purchaser to be free from defects in material and workmanship for a period of one year from the date of the original purchase.

Dual Electronics Corp. agrees, at our option, during the warranty period, to repair any defect in material or workmanship or to furnish an equal new, renewed or comparable product (whichever is deemed necessary) in exchange without charges, subject to verification of the defect or malfunction and proof of the date of purchase. Subsequent replacement products are warranted for the balance of the original warranty period.

Who is covered? This warranty is extended to the original retail purchaser for products purchased and used in the U.S.A.

What is covered? This warranty covers all defects in material and workmanship in this product. The following are not covered:
installation/removal costs, damage resulting from accident, misuse, abuse, neglect, product modification, improper installation, incorrect line voltage, unauthorized repair or failure to follow instructions supplied with the product, or damage occurring during return shipment of the product.

What to do?

1. Before you call for service, check the troubleshooting guide in your owner's manual. A slight adjustment of any custom controls may save you a service call.
2. If you require service during the warranty period, you must carefully pack the product (preferably in the original package) and ship it by prepaid transportation with a copy of the original receipt from the retailer to an authorized service center.
3. Please describe your problem in writing and include your name, a return UPS shipping address (P.O. Box not acceptable), and a daytime phone number with your shipment.
4. For more information and for the location of the nearest authorized service center please contact us by one of the following methods:
 - Call us toll-free at 1-866-382-5476
 - E-mail us at cs@dualav.com

Exclusion of Certain Damages: This warranty is exclusive and in lieu of any and all other warranties, expressed or implied, including without limitation the implied warranties of merchantability and fitness for a particular purpose and any obligation, liability, right, claim or remedy in contract or tort, whether or not arising from the company's negligence, actual or imputed. No person or representative is authorized to assume for the company any other liability in connection with the sale of this product. In no event shall the company be liable for indirect, incidental or consequential damages.

Dual Electronics Corp.
Toll Free: 1-866-382-5476

www.dualav.com

©2007 Dual Electronics Corp. All rights reserved.

The Bluetooth® word mark and logos are owned by the Bluetooth SIG, Inc. and any use of such marks by Movon is under license. Other trademarks and trade names are those of their respective owners.

NSA0207-V01

FCC Information

This device complies with Part 15 of the FCC Rules. Operation is subject to the following two conditions:

- (1) This Device may not cause harmful interference, and
- (2) This device must accept any interference received, including interference that may cause undesired operation.

WARNING

Changes or modifications not expressly approved by the manufacturer could void the user's authority to operate the equipment.

CAUTION: Exposure to Radio Frequency Radiation.

Antenna shall be mounted in such a manner to minimize the potential for human contact during normal operation. The antenna should not be contacted during operation to avoid the possible of exceeding the FCC radio frequency exposure limit.