



© NAPCO 2008

333 Bayview Avenue
Amityville, New York 11701
For Sales and Repairs, (800) 645-9445
For Technical Service, (800) 645-9440

Publicly traded on NASDAQ Symbol: NSSC



GEM-TRANSLP

Low Profile Window / Door Transmitter

INSTALLATION INSTRUCTIONS

WI1667A.02 4/08

GENERAL DESCRIPTION

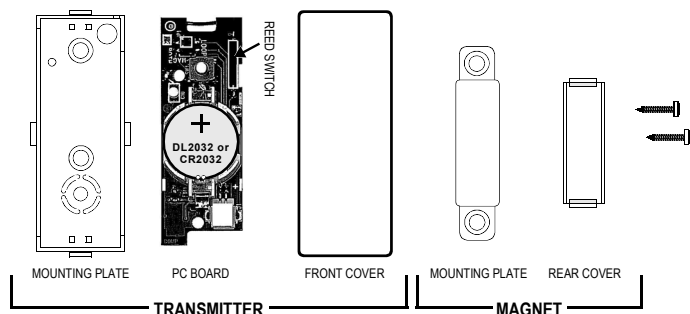


Fig. 1. GEM-TRANSLP Component Parts

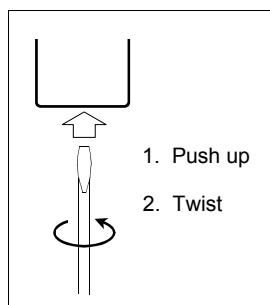


Fig. 2. Opening the case

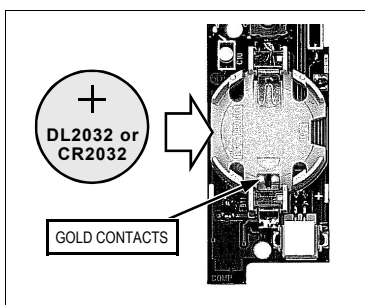


Fig. 3. Install battery under gold contacts

The GEM-TRANSLP is a low profile window/door transmitter designed for use in Napco GEM-series wireless systems. When used with the supplied magnet, the transmitter functions as a window/door sensor. However, plug-in wires are provided for normally-closed external contacts so that one or two additional devices may be used in conjunction with (or instead of) the internal reed switch. A jumper is provided allowing optional use of normally-closed external contact(s) and/or internal reed switch.

The GEM-TRANSLP is powered by a 3-volt lithium battery (Energizer CR2032 or Duracell DL2032), that powers the transmitter for up to 5 years. When battery voltage drops below normal, a low-battery report will be sent to the receiver.

INSTALLATION

Notes: The transmitter and magnet may be mounted in any position with no degradation in performance. Thus, if a left-handed reed switch is required, the unit may be mounted upside down. However, for reference purposes in this text, the transmitter will be considered oriented with the reed switch at the top, as shown in Fig. 1. The PC board snaps into the transmitter front cover in only one direction; a raised alignment mark on the transmitter front cover indicates the location of the reed switch on the PC board. There is also an alignment mark on the magnet mounting plate.

1. **Open the case.** Remove the GEM-TRANSLP transmitter cover from its mounting plate by inserting a small screwdriver into either slot; twist while applying upward pressure. See Fig. 2.
2. **Insert the battery.** Observe battery polarity. Insert battery under the two gold contacts with the positive (+) terminal towards you (facing up). See Fig. 3. Do not insert backwards.
3. **Identify PC Board parts.** Note location of reed switch in Fig. 1.
4. **Select transmitter location.** Avoid mounting the transmitter near the floor. Low level mounting can reduce transmission range and may subject the transmitter to damage.
5. **Install magnet.** Insert a small screwdriver into either retaining tab in rear cover; push in and twist to separate. Insert magnet

inside mounting plate and replace rear cover. If using external contacts, skip to Step 7.

6. **Install mounting plates.** Use #6 flat-head screws to secure, observing reed switch alignment mark. Mount magnet housing within 5/8" of the transmitter cover. For internal contacts, skip to Step 9.
7. **(For external contacts only).** Install contact or sensor and transmitter mounting plate. Mount the contact or sensor as described in its instructions. For recessed wiring, carefully drill an access hole for the wires.
8. **(For external contacts only).** Insert wire plug into receptacle on PC board (curl wires inside case to avoid pinching wires); connect two wires to an external sensor having normally-closed contacts (or a normally-closed loop). Set Jumper J1 to "LOOP".
9. **Complete transmitter setup.** If internal reed switch is used, set Jumper J1 to "MAG". If both internal reed switch and external contacts are used, remove Jumper J1 (see table below).
10. **Close the transmitter case.** Close the case by engaging the retaining tabs at either end, then snapping the front cover to the mounting plate. Be careful not to pinch wire harness (if used).
11. **Program the panel.** Each transmitter has a unique factory-programmed ID code that distinguishes itself to the receiver. Enter (a) the zone number to which the transmitter will be mapped; (b) the 6-digit ID code with checksum digit; and (c) the wireless point number. See control-panel instructions for entering this ID code and checksum digit into the panel; be sure to enter all numbers and/or letters, including leading zeros, if any. **Note:** Program for "point 1" for all wiring options. **Note:** In UL burglary installations, program the burglary alarm output for all protective devices.

WIRING OPTIONS

The GEM-TRANSLP may be wired in any of the following configurations. Refer to the following table:

WIRING OPTIONS			
OPTION	JP1 SETTING	FUNCTION	DIAGRAM
1.		"LOOP": External contact enabled for point 1; magnetic internal contact (reed switch) disabled.	 N.C. EXTERNAL CONTACT ON POINT 1 ("LOOP")
2.		JUMPER REMOVED: External contact enabled for point 1 and magnetic internal contact (reed switch) enabled for point 1.	 (REED SWITCH) JUMPER REMOVED TO ENABLE BOTH N.C. EXTERNAL AND N.C. INTERNAL CONTACTS ON POINT 1
3.		"MAG": Magnetic internal contact enabled for point 1; external contact disabled.	 MAGNETIC REED SWITCH ONLY N.C. INTERNAL CONTACT ON POINT 1 ("MAG")

Notes:

1. Caution: Changes or Modifications not approved by NAPCO may void the user's authority to operate the equipment.
2. This device may not cause interference.
3. This device must accept any interference, including interference that may cause undesired operation of the device.

Note: For a replacement wire harness, order part # W978.

NAPCO SECURITY LIMITED WARRANTY



NAPCO SECURITY SYSTEMS, INC. (NAPCO) warrants its products to be free from manufacturing defects in materials and workmanship for *thirty-six months* following the date of manufacture. NAPCO will, within said period, at its option, repair or replace any product

failing to operate correctly without charge to the original purchaser or user.

This warranty shall not apply to any equipment, or any part thereof, which has been repaired by others, improperly installed, improperly used, abused, altered, damaged, subjected to acts of God, or on which any serial numbers have been altered, defaced or removed. Seller will not be responsible for any dismantling or reinstallation charges.

THERE ARE NO WARRANTIES, EXPRESS OR IMPLIED, WHICH EXTEND BEYOND THE DESCRIPTION ON THE FACE HEREOF. THERE IS NO EXPRESS OR IMPLIED WARRANTY OF MERCHANT ABILITY OR A WARRANTY OF FITNESS FOR A PARTICULAR PURPOSE. ADDITIONALLY, THIS WARRANTY IS IN LIEU OF ALL OTHER OBLIGATIONS OR LIABILITIES ON THE PART OF NAPCO.

Any action for breach of warranty, including but not limited to any implied warranty of merchant ability, must be brought within the six months following the end of the warranty period.

IN NO CASE SHALL NAPCO BE LIABLE TO ANYONE FOR ANY CONSEQUENTIAL OR INCIDENTAL DAMAGES FOR BREACH OF THIS OR ANY OTHER WARRANTY, EXPRESS OR IMPLIED, EVEN IF THE LOSS OR DAMAGE IS CAUSED BY THE SELLER'S OWN NEGLIGENCE OR FAULT.

In case of defect, contact the security professional who installed and maintains your security system. In order to exercise the warranty, the product must be returned by the security professional, shipping costs prepaid and insured to NAPCO. After repair or replacement, NAPCO assumes the cost of returning products under warranty. NAPCO shall have no obligation under this warranty, or otherwise, if the product has been repaired by others, improperly installed, improperly used, abused, altered, damaged, subjected to accident, nuisance, flood, fire or acts of God, or on which any serial numbers have been altered, defaced or removed. NAPCO will not be responsible for any dismantling, reassembly or reinstallation charges.

This warranty contains the entire warranty. It is the sole warranty and any prior agreements or representations,

whether oral or written, are either merged herein or are expressly canceled. NAPCO neither assumes, nor authorizes any other person purporting to act on its behalf to modify, to change, or to assume for it, any other warranty or liability concerning its products. In no event shall NAPCO be liable for an amount in excess of NAPCO's original selling price of the product, for any loss or damage, whether direct, indirect, incidental, consequential, or otherwise arising out of any failure of the product. Seller's warranty, as herein above set forth, shall not be enlarged, diminished or affected by and no obligation or liability shall arise or grow out of Seller's rendering of technical advice or service in connection with Buyer's order of the goods furnished thereunder.

NAPCO RECOMMENDS THAT THE ENTIRE SYSTEM BE COMPLETELY TESTED WEEKLY.

Warning: Despite frequent testing, and due to, but not limited to, any or all of the following; criminal tampering, electrical or communications disruption, it is possible for the system to fail to perform as expected. NAPCO does not represent that the product/system may not be compromised or circumvented; or that the product or system will prevent any personal injury or property loss by burglary, robbery, fire or otherwise; nor that the product or system will in all cases provide adequate warning or protection. A properly installed and maintained alarm may only reduce risk of burglary, robbery, fire or otherwise but it is not insurance or a guarantee that these events will not occur. CONSEQUENTLY, SELLER SHALL HAVE NO LIABILITY FOR ANY PERSONAL INJURY, PROPERTY DAMAGE, OR OTHER LOSS BASED ON A CLAIM THE PRODUCT FAILED TO GIVE WARNING. Therefore, the installer should in turn advise the consumer to take any and all precautions for his or her safety including, but not limited to, fleeing the premises and calling police or fire department, in order to mitigate the possibilities of harm and/or damage.

NAPCO is not an insurer of either the property or safety of the user's family or employees, and limits its liability for any loss or damage including incidental or consequential damages to NAPCO's original selling price of the product regardless of the cause of such loss or damage.

Some states do not allow limitations on how long an implied warranty lasts or do not allow the exclusion or limitation of incidental or consequential damages, or differentiate in their treatment of limitations of liability for ordinary or gross negligence, so the above limitations or exclusions may not apply to you. This Warranty gives you specific legal rights and you may also have other rights which vary from state to state.

This device complies with Part 15 of the FCC Rules. Operation is subject to the following two conditions: (1) this device may not cause harmful interference, and (2) this device must accept any interference received, including interference that may cause undesired operation. **Caution:** Changes or modifications not expressly approved by manufacturer could void the user's authority to operate the equipment. **FCC ID:** AD8-GEMTRANSLP; **IC:** 596A-GEMTRANSLP