

# Wireless speaker

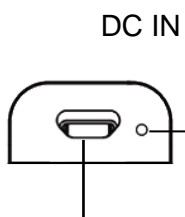
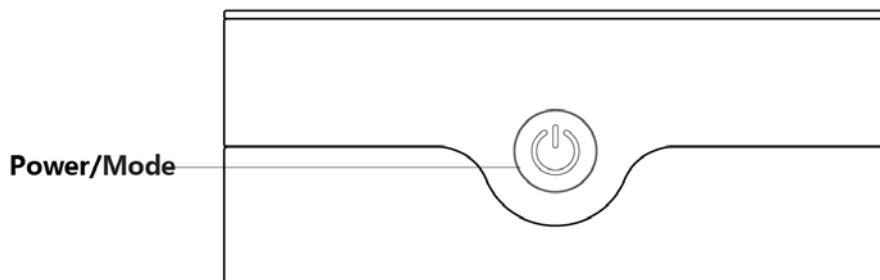
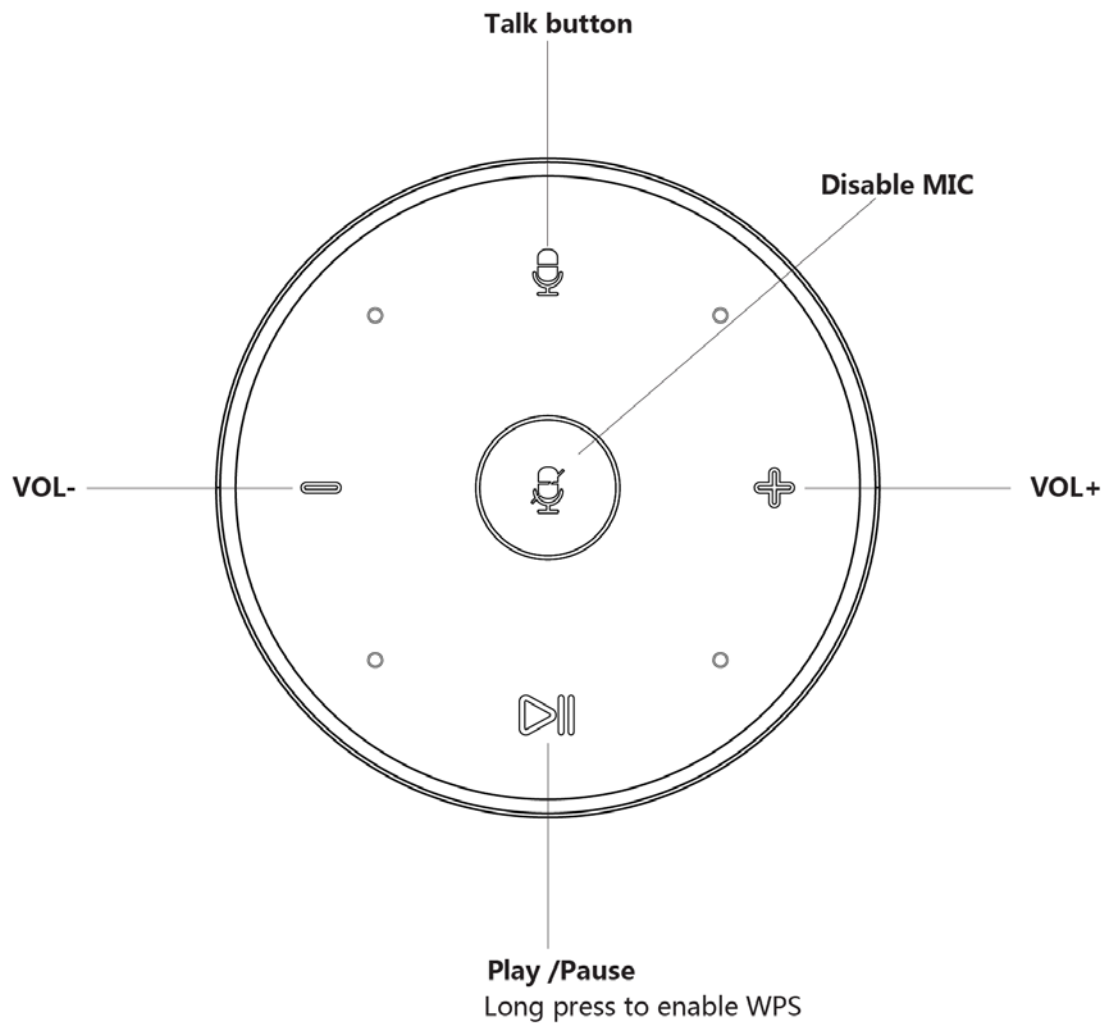
## - M120 User Manual

### Table of Content

1	Speaker Setup .....	3
1.1	Buttons .....	3
1.2	Power on the device .....	4
1.3	Connect to Wi-Fi .....	4
1.4	Alexa Voice service .....	5
1.5	AirPlay playing .....	5
1.6	Android DLNA playing .....	6
2	Debug and Diagnostics .....	6
2.1	Updating software .....	6
2.2	Factory Reset .....	7
2.3	Useful commands .....	8
2.3.1	Check Speaker Software Version .....	8
2.3.2	Dump Speaker Log File .....	8
3	Use Bluetooth connection mode .....	8
4	Other functions .....	8
5	Product Details .....	9
6	Electrical technical parameters .....	9
7	Warranty terms: .....	9
8	FCC Warning .....	10

# 1 Speaker Setup







## 1.1 Buttons



The indicator turns red under charging and turns off when the speaker is fully charged. The fully charged speaker can work around 3 hours. Low battery leads to alarm or auto stopped. Please charge the speaker in time.

## Power input

The definitions of these buttons are

Button	Description
	Talk button
	Volume Down
	Volume UP
	Disable MIC
	Short press to Play/Pause; Long press to enable WPS
	Short Press to Mode switch Press and hold the button 3 seconds to turn ON/OFF

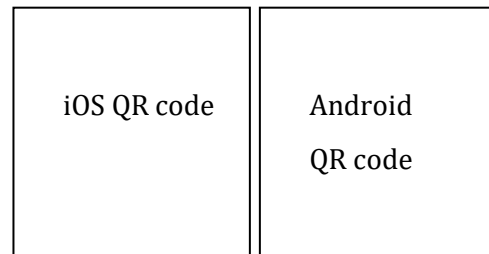
### 1.2 Power on the device

The indicator turns red under charging and turns off when the speaker is fully charged. The fully charged speaker can work around 3 hours.

Low battery leads to alarm or auto stopped. Please charge the speaker in time.

### 1.3 Connect to Wi-Fi

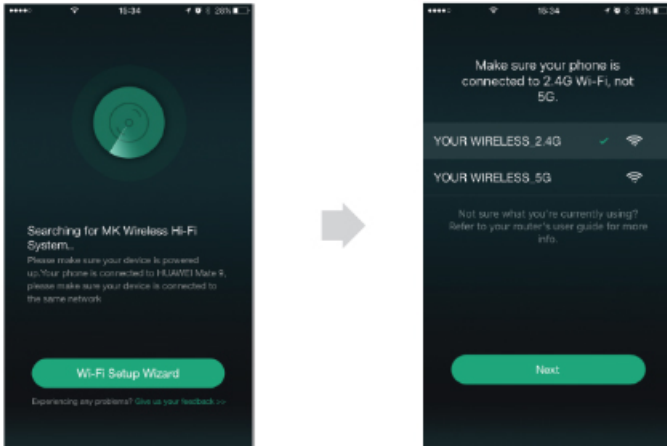
**First step:** Download and install “SoundBot Player” APP in AppStore by iOS smart devices, in Google Play store by Android smart devices, or scan the following QR Code for download and installation.



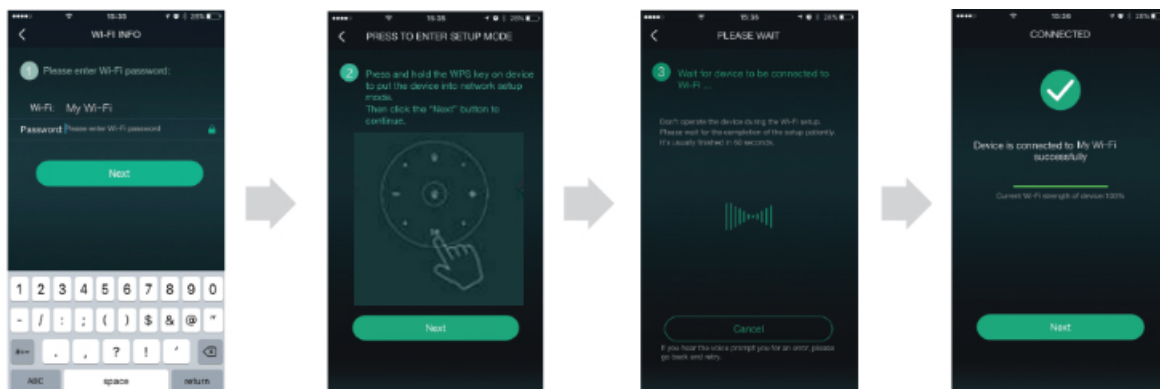
**Second Step:** Turn on SoundBot-M120, press “MODE” Button to switch to Wi-Fi mode. The “W” indicator light turns on or flickers.

**Third step:**

After making sure the smart device Press “Wi-fi Setup Wizard” Choose SoundBot-Connected to Wi-Fi, open “SoundBot-device is connected to 2.4 M120” to make sure your smart Wi-Fi. M120 Player” APP and enter the searching page.

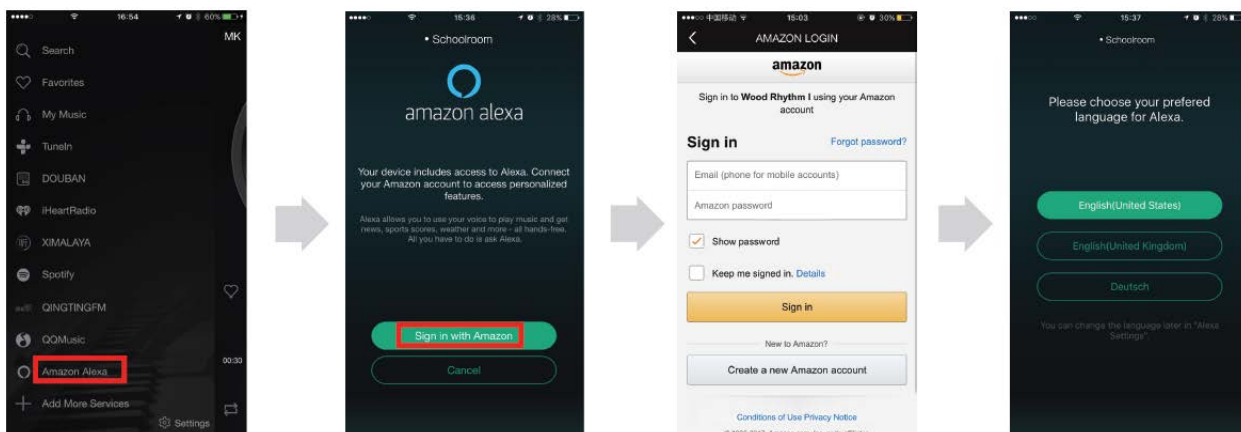


Input the Wi-Fi and complete the connection between M120 and your smart device according to the APP's display. Upon successful connection there will be voice prompt.




### 1.4 Alexa Voice service


Alexa is Amazon's cloud computing voice service. You can use Alexa to play music, listen to news, check the weather and so on. Choose Wi-Fi mode, Login your Amazon account on "SoundBot Player" APP, press this button, and the functions of Alexa can be used to speak to "M120" directly.



### 1.5 AirPlay playing

After M120 is connected to the same network. You will be able to use AirPlay to play music wirelessly

**iOS10, iOS11 user:** Open “Control Center” of your iphone. Swipe horizontally to find the “Now playing” screen, Tap  , select “M120”

iOS9, iOS8, iOS7 user: Swipe up from the bottom of your iphone to Open “Control Center”. Tap  , select “M120”

## 1.6 Android DLNA playing

After M120 is connected to the same net work. You can open the music player APP with DLNA function on your smart device, click the icon on the playing interface and select your M120 for music streaming.

Tap icon examples:

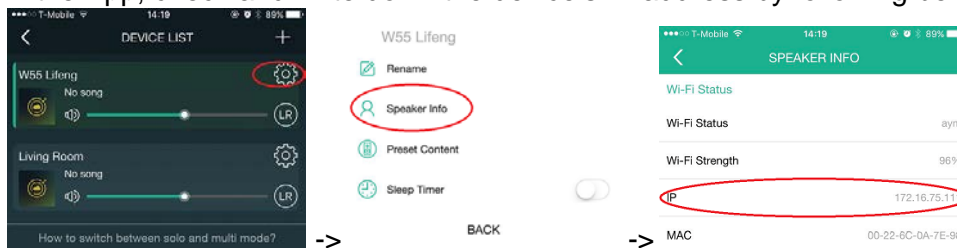


## 2 Debug and Diagnostics

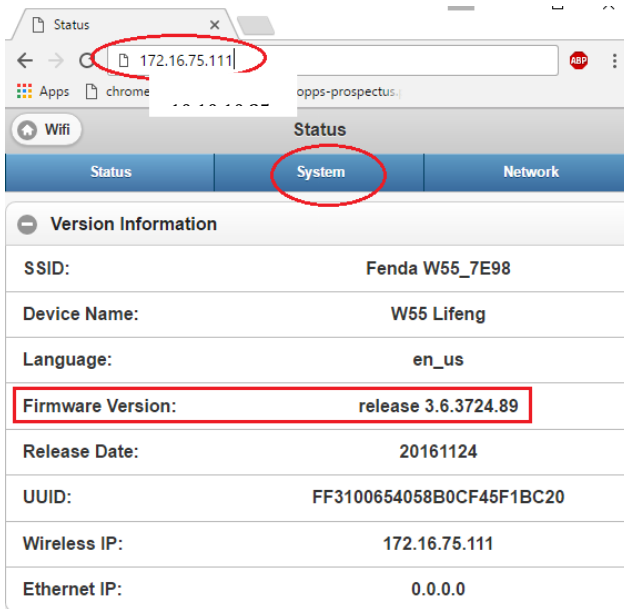
### 2.1 Updating software

You may have to update the speaker firmware, MCU firmware when there is a new release. Please follow the following step to update the software.

1. In the App, check and write down the device’s IP address by following below steps



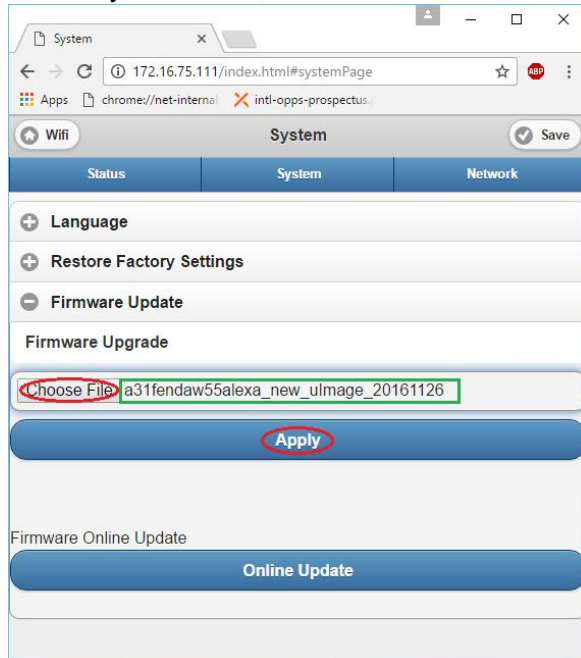
2. Download and UNZIP the firmware you want to update.
3. On a PC that is connected to the same network, open a browser, type the IP address of the speaker in the address bar and hit enter. You’ll see the web portal of the speaker, as shown below.



Then click the “System” table

Notice: You can check the firmware version on this page.

4. In the System table, choose the firmware file, then click the “Apply” button, as shown below



5. Wait until the firmware update is complete
6. Repeat the above steps to update other firmware

## 2.2 Factory Reset

There are two ways to reset the device into factory settings: use a hardware button or use the companion App. If you don't find the factory reset button in section 1.1, you will have to factory reset the device in the companion App. To do this, go to the speaker settings (refer to section 2.1, step 1), click on Factory Reset. You will hear a voice prompt before the speaker reboots.

## 2.3 Useful commands

### 2.3.1 Check Speaker Software Version

http://Speaker\_IP/

### 2.3.2 Dump Speaker Log File

Use a HTTP command

http://Speaker\_IP/httpapi.asp?command=getsyslog

Use the App

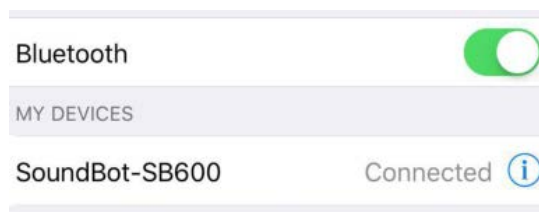
In the companion App, click on the “Send feedback” button in the App settings.

## Reminder

- If your Wi-Fi password is changed, or M120 is in a new Internet environment, you need to repeat the above setting steps to reconnect Wi-Fi.
- Please make sure your Wi-Fi frequency is 2.4 GHz. SoundBot-M120 doesn't work under 5.0 GHz-frequency Wi-fi.
- Please avoid overuse of broadband. It is suggested that the router should not be connected with many devices.
- Don't use the device in a complicated network environment (such as offices, bars, bridge connection of multiple routes, or too many router around) it may result in an unstable connection, interrupted playing, connection failure, not available for use, etc.

## 3 Use Bluetooth connection mode

Tap the mode change button “MODE” on M120 and switch to Bluetooth mode. Then open the Bluetooth setting on your smart device, search for “SoundBot-M120”, choose and connect the device by Bluetooth and then play.



## 4 Other functions

**Low-voltage alarm:** When battery power is lower than 10%, speaker gives out warning alerts. Please charge the speaker in time. When battery power is lower than 3%, the system will be powered off automatically.

**Sleeping:** When there is no operation in 30 minutes, the device will automatically enter standby state and the light will turn off. You can wake up by press button or call “Alexa” directly and issue a command to use the device.

## 5 Product Details

**Item NO. :** SoundBot-M120

**Product list:** SoundBot-M120 host x 1, charging line x 1, manual x 1, warranty card x 1

**Material:** ABS, aluminum alloy, fabric

**Dimensions:** Top diameter 85mm, Bottom length 105mm, Bottom width 105mm, Height 200mm.

**Net weight:** 700g±1g

## 6 Electrical technical parameters

Wi-Fi	Frequency range of the Wi-Fi transmitter: 2.412GHz-2.472GHz for EU 2.412GHz-2.4621GHz for USA
	Wi-Fi network compatibility: IEEE 802.11 b/g/n
Bluetooth	Bluetooth version: 4.0
	support HFPV1.6, HSPV1.2, A2DPV1.2,AVRCPV1.4, DIV1.3
Transmission distance	about 110m for Wi-Fi
	above 10m for Bluetooth
Max output power 3W× 2	
Channel: Double channel	
S/N ≥75DB	
Frequency response 20Hz-20KHz	
Distortion degree: THD:<10%	
Speaker: Outside diameter 52mm, Inside magnet, 4Ω/5W x 2	
Microphone: 2 x -32 dB +/-3dB,1x-40 dB +/-3dB	
Power Parameters	Rated voltage: DC 3.4~4.2V
	Battery: Built-in double 18650 lithium battery, 3.7V/4400mAH
	Charging voltage/ Current: 5V±0.25V/1A±200MA
	Charging time: about 5.5~6.5 hours

## 7 Warranty terms:

**1-YEAR warranty service** and professional customer service & Technical Support, any question please feel free to contact us via [xxxx@soundBot.com](mailto:xxxx@soundBot.com) (it would be grateful if you can add your amazon order I). We will reply in 24 hours.

**Attention:**



- Please avoid using the product in extreme high or low temperature and humid environment.
- Please do not drop, bend or throw the product. Hard usage might lead to product damage.
- If you do not use this product for a long time, please store it in a dry and dust-free environment with little temperate change.
- Please do not let children play with this product, so as to avoid accidents.
- Please do not use this product in any place where inflammable and explosive materials are stored.
- Please do not let children play with this product, so as to avoid any accidents.
- This product has solid wood shell. Please avoid clashes and do not use solvent with corrosive to clean. Please only use dry clean soft cloth to wipe gently. If the product is not going to be used for a long time, please put it into a storage bag.
- Ever piece of solid wood contains different life and natural textures or few ecological traces such as insect bites. The are all natural phenomena. Please don't worry and enjoy using the product.

All the trademarks, names and icons involved in the article are owned by the holders.

## 8 FCC Warning

This equipment has been tested and found to comply with the limits for a Class B digital device, pursuant to part 15 of the FCC Rules. These limits are designed to provide reasonable protection against harmful interference in a residential installation. This equipment generates, uses and can radiate radio frequency energy and, if not installed and used in accordance with the instructions, may cause harmful interference to radio communications. However, there is no guarantee that interference will not occur in a particular installation. If this equipment does cause harmful interference to radio or television reception, which can be determined by turning the equipment off and on, the user is encouraged to try to correct the interference by one or more of the following measures:

- Reorient or relocate the receiving antenna.
- Increase the separation between the equipment and receiver.
- Connect the equipment into an outlet on a circuit different from that to which the receiver is connected.
- Consult the dealer or an experienced radio/TV technician for help.

Caution: Any changes or modifications to this device not explicitly approved by manufacturer could void your authority to operate this equipment.

This device complies with part 15 of the FCC Rules. Operation is subject to the following two conditions: (1) This device may not cause harmful interference, and (2) this device must accept any interference received, including interference that may cause undesired operation.

The device has been evaluated to meet general RF exposure requirement. The device can be used in portable exposure condition without restriction.