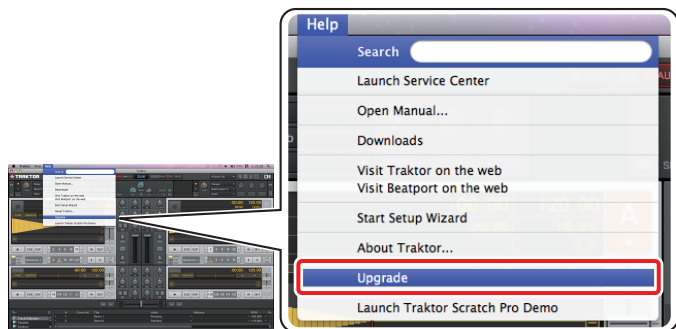


Pioneer DDJ-T1

[For Mac] Upgrading from TRAKTOR T1 EDITION to TRAKTOR PRO

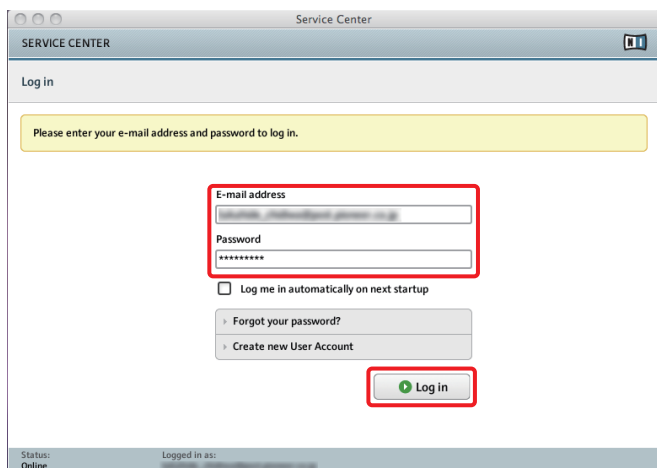
- A connection to the Internet is required to perform the procedure below.
- TRAKTOR is a registered trademark of Native Instruments.

1. Launch TRAKTOR T1 EDITION.
2. From the TRAKTOR Help menu, select [Upgrade].

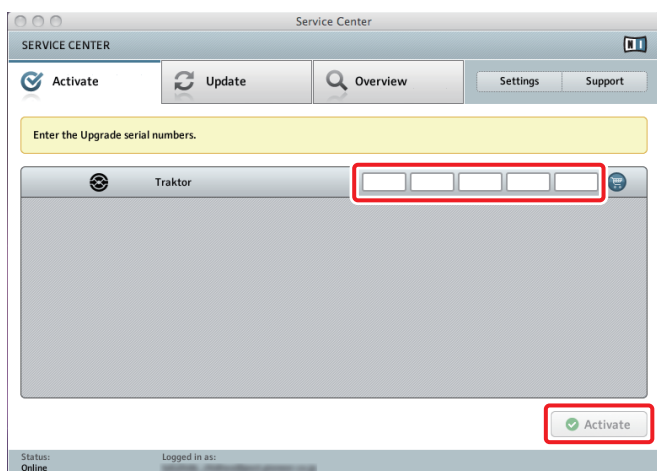


TRAKTOR quits, then Service Center launches.

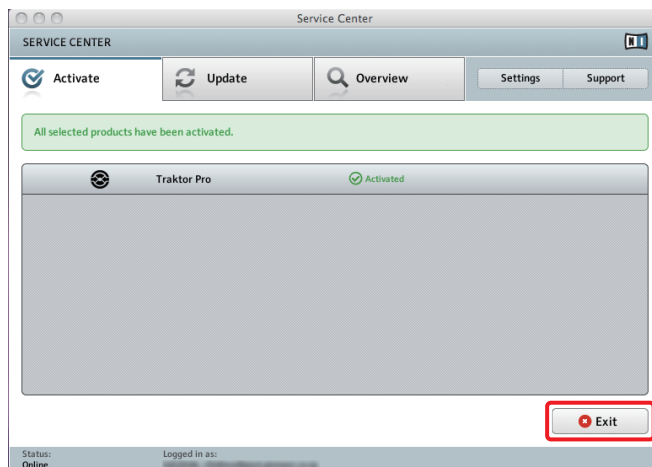
3. Input your e-mail address and password to log in.



4. Input the TRAKTOR PRO/SCRATCH PRO serial number, then click the activate button.



5. When "All the selected products have been activated." is displayed, activation is completed.

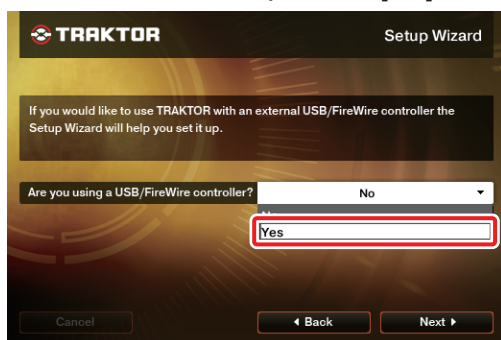


[Reference] Flow for launching TRAKTOR PRO the first time

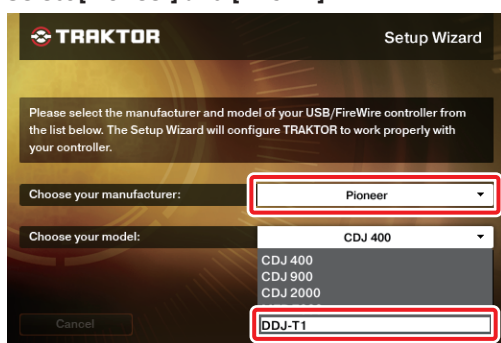
1. When TRAKTOR PRO is launched the first time, the Setup Wizard opens.



2. USB controller is correct, so select [Yes].



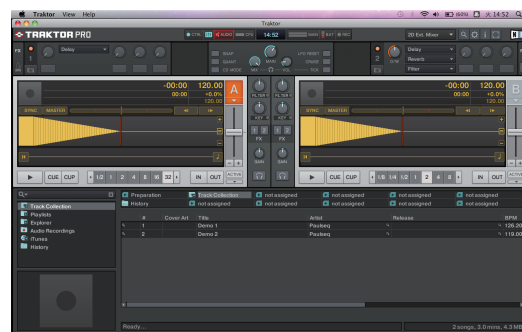
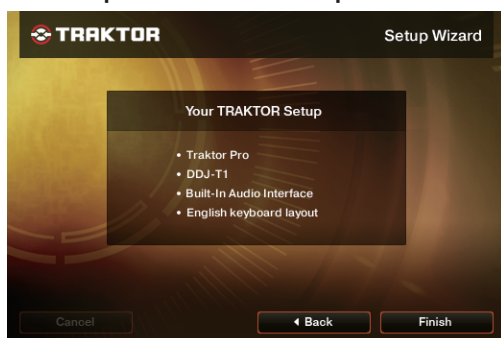
3. Select [Pioneer] and [DDJ-T1].



4. If not using the NI audio interface, select [No].



5. This completes the initial setup.



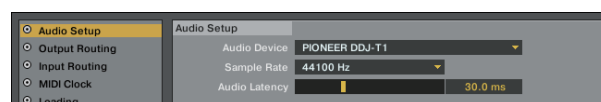
NOTE:

The preferences are reset after upgrading.

Note that the audio settings below are required at a minimum in order to use the DDJ-T1.

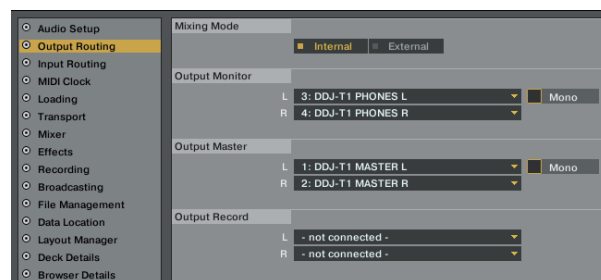
(1) Audio Setup

- Audio Device : PIONEER DDJ-T1



(2) Output Routing

- Mixing Mode : Internal
- Output Monitor :
 - L 3: DDJ-T1 PHONES L
 - R 4: DDJ-T1 PHONES R
- Output Master :
 - L 1: DDJ-T1 MASTER L
 - R 2: DDJ-T1 MASTER R



(3) Input Routing

- * Below are the initial settings of TRAKTOR PIONEER DDJ-T1 EDITION.
If you were using the external inputs with the initial settings, please make the settings below.
These settings are not required if you will not be using the external inputs.

- Input Channel D :
 - L 1: DDJ-T1 AUX/MIC L
 - R 2: DDJ-T1 AUX/MIC R

