



NDC-400

1.5" FLICK™ MINI DIGITAL VIDEO CAMCORDER



User's Manual

Using Your Camcorder

Turn On/Off

1. Press & hold down "⏻" to turn camcorder on.
2. Press "⏻" to turn camcorder off.

Note:

Camcorder will power off after 1 minute

Change Mode

Press "Mode" to change mode between video record, still photo capture and playback.

Change Resolution

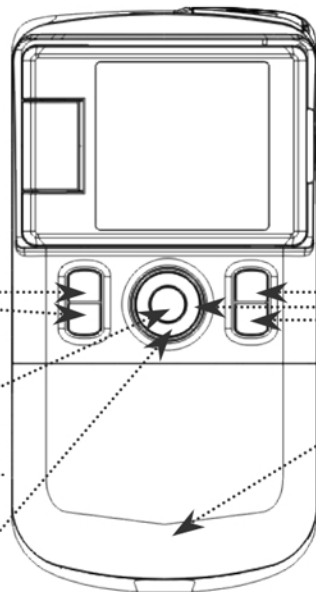
Press "H/L" to change resolution.

Record/Capture

1. Press "●" to begin video recording or take a photo.
2. Press "●" again to stop video recording.

Zoom

1. Press "⏮" to zoom in.
2. Press "⏭" to zoom out.



Playback

1. Press "Mode" to enter playback mode.
2. In playback mode, press "⏮" or "⏭" to select another file.
3. Press "●" to begin or to stop playing video, and press "⏮" or "⏭" to zoom in/out photo.
4. When zoomed in press "⏮" or "⏭" to enter PAN Mode to view image

Delete

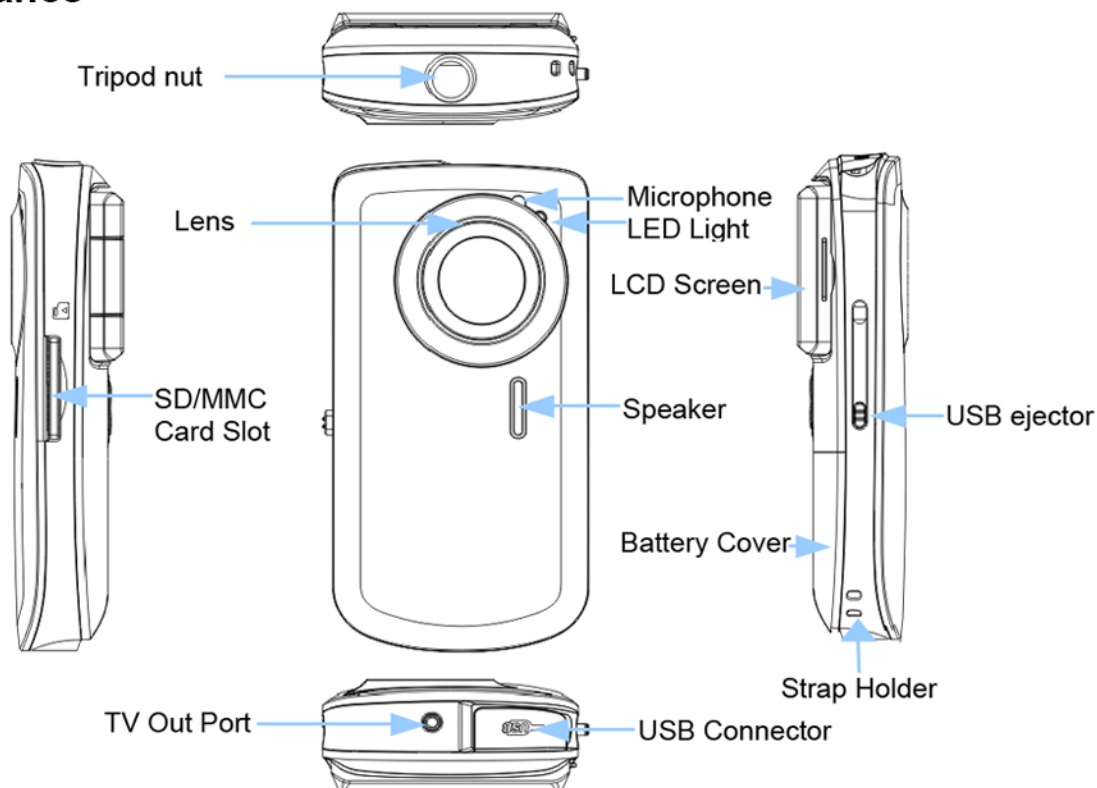
1. In playback mode, press "🗑" and "Delete Current?" will appear on display screen.
2. Press "🗑" again and "Delete All?" will appear on display screen.
3. Press "●" to confirm. Press any other button to cancel.

Change Batteries

1. Slide down the battery cover to remove it.
2. Remove used batteries.
3. Reinstall two fresh AA batteries, align "+", "-" terminals as indicated.
4. Close the battery cover.

Note: Insert 2 fresh AA batteries and SD (or MMC) card to operate the camera.

Appearance



Note: Please insert two fresh AA batteries and SD card to operate the camera

a) Installing Batteries and Powering ON

Slide down and remove the battery cover. Insert two new AA alkaline batteries. Note polarity on battery terminals. Slide and close the battery cover. Press and hold down the power switch until LCD panel shows that camera is turned ON

b) Installing SD/MMC Card



Turn your camcorder OFF before inserting / removing the SD/MMC Card (maximum 16GB)

Insert the SD Memory card into the SD/MMC Card Slot. Check card's alignment according to position diagram on the camera before inserting. Push it down until the card stays latched. Do not force card during insertion – forcing may damage SD card and camera as well.

Push and release inserted card when you wish to remove or replace the card.

Note that the SD Card has a tiny LOCK switch on the side. Set the switch on the card to un-LOCK; only this unlocked position will allow you to store recorded videos and still pictures on the SD Memory Card.

c) Selecting Video / Still Pictures Resolution

You can select High or Low resolution for recording videos or taking still pictures.

Press "H/L" resolution switch selecting desired resolution.

LCD screen will display "Hi" or "Lo" indicating HIGH or LOW resolution selected.

d) Video and picture taking

The SD card must be installed if you wish to record video or take still pictures.

Press "Mode" to scroll and select Video Recording or Still photo capture mode. Note related icons visible in left upper corner onto LCD screen.

Press "●" to begin Video Recording or take a Still Picture.

Press "●" again to stop Video Recording.

e) Playback

Press "Mode" to scroll and enter the Playback mode.

Press "⏮" or "⏭" (left or right) buttons to select desired Video or Still Picture file.

Press "⏴" (down button) to enter "THUMBNAIL MODE" to view multiple files. Then scroll to desired file and press "●" to select

Press "●" to start playing video, press this button again to stop.

Press "⏴" or "⏵" to zoom in/out of a Still Picture

When you have zoomed in, press "⏮" or "⏭" (left or right button) to enter "PAN MODE". Then pressing any direction keys will move the enlarged image in any direction so you may view selected picture segment.

To exit from "PAN MODE", press "●" button.

f) Deleting Video or Still Picture

Select the Playback mode, press "📷" and "Delete Current?" will appear on LCD screen. Press "●" to confirm deleting current Video or Still picture. Press any other button to cancel "delete" function.

Press "📷" twice and "Delete All?" will appear on display screen.

Press "●" to confirm deleting all Video or Still Pictures. Press any other button to cancel "delete" function.

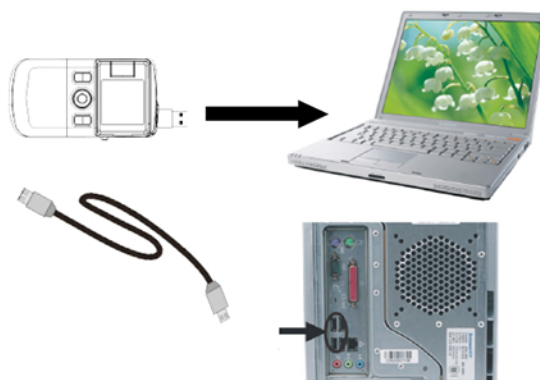
Connect To PC, Download Video/ Photos and TV Output

Please install bundled programs from supplied installation CD before connecting camcorder with PC for the first time

1. Insert supplied CD into computer's CD ROM
2. Follow instruction and install programs

Connect to PC

1. Press and then slide up the switch to extend USB connector. Turn the camcorder ON.
2. Insert camcorder USB connector into USB port on computer, or use supplied USB extension cable to make connection.

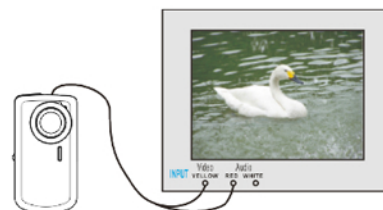


Download Video/Photos From Camcorder to PC

1. After connecting to computer, go to "My Computer" and open the "Removable Disc." The photos or videos will be saved in the \DCIM\ 100MEDIA folder in the removable disc. Choose the desired photo/video in the 100MEDIA folder and copy (drag with mouse) it into the target folder in your computer.
2. You can use ArcSoft MediaImpression to upload videos to You Tube website.
3. ArcSoft MediaImpression can be installed from the CD included with this device

TV Output

1. Plug in TV cable: Insert single-connector end to camcorder. Connect the end with double-connectors to video (yellow) and to audio (red or white) input jack on TV.
2. Turn on TV and camcorder.
3. Switch mode on TV to select video input (see your TV manual for instructions).



Specifications And System Requirements

Product specifications:

Image sensor:	300,000pixels
Function mode:	Recording Video, Capture Still Images, Play back, Mass storage device
Resolution:	Video: 640×480 (30fps); 320×240 (30fps) Photo: 640×480, 320×240
Lens:	F2.8 f=3.0mm
Focus range:	1.2m ~ infinity
Digital Zoom:	4×
LCD display:	1.5 inch (480x240) TFT LCD
White balance:	Auto
Exposure:	Auto

File format: AVI/JPEG
Video out: NTSC
Storage media: Uses SD/MMC card (max. 16GB) – not supplied
USB port: USB2.0 port
Power supply: Uses two AA Alkaline batteries – not supplied

System Requirements:

Operation System	Microsoft Windows 2000,XP,Vista, 7
CPU	Above Intel PIII800 or CPU of equal performance
Memory	Above 256 MB
Sound card and display card	Support DirectX8 or above
CD-ROM	4X speed or above
Hard Disk	1GB space above useable
Other	One standard USB 1.1 or USB 2.0 port