

SenzaFil Manual



info@nedaplightcontrols.com
☎ +31 544 471 888

Table of Contents

SenzaFil Manual.....	1
Welcome.....	1
Introduction.....	2
Project Configuration	3
Screen Appearance	4
Installation.....	7
Hardware Installation	7
Software Installation	8
Configuration.....	9
Getting Started.....	9
Importing Floorplan	10
Drag and Drop Control Unit.....	11
Extend license.....	12
Locating Lamps.....	13
Drag and Drop Lamps	14
Creating Groups	15
Uploading to Control Unit	16
Tips.....	17
Setting Auto Toggle Time	17
Auto Toggle.....	18
Adjusting Range	19
Devices vs. Lamps	20
Properties (Device Status).....	21
Group view	23
Icons.....	24
Functional grouping	26
More than One Control Unit.....	27
Naming devices/groups.....	28
Restore backup.....	29
Switching On and Assigning per Circuit.....	30
Recognizing Assigned Lamps	31
Menu.....	32
File Menu	32
View Menu	33
Select Menu.....	34
Device Menu.....	35
Control Unit Menu	36
Menu Tools	37
SenzaFil Manual V2.3.4	38
Index	39

SenzaFil Manual

Welcome

SenzaFil Help provides assistance on SenzaFil, a control unit and configuration tool for wireless control of HID lamps. SenzaFil allows you to switch lamps on and off, to dim them and to monitor their status.

Each control unit can control a maximum of 200 HID lamps that can be subdivided into a maximum of 8 groups. Creating groups allows you to control the settings of separate groups.

The SenzaFil control unit has dimming capability, enabling it to dim the brightness of HID lamps in 5% increments to a maximum of 50% of their full voltage.

Introduction

In order to use the SenzaFil control unit, you need:

1. HID lamps;
2. Nedap SenzaFil lamp drivers;
3. One SenzaFil control unit for every 200 lamps (in max. 8 groups);
4. SenzaFil USB key;
5. Laptop or handheld PC with Microsoft Windows XP / Vista;
6. CD with configuration software (included with the SenzaFil USB key);
7. A license if you want to configure more than 5 lamps;

Project Configuration

When configuring a new project, you must take the following steps in sequence (see also [Getting Started](#)):

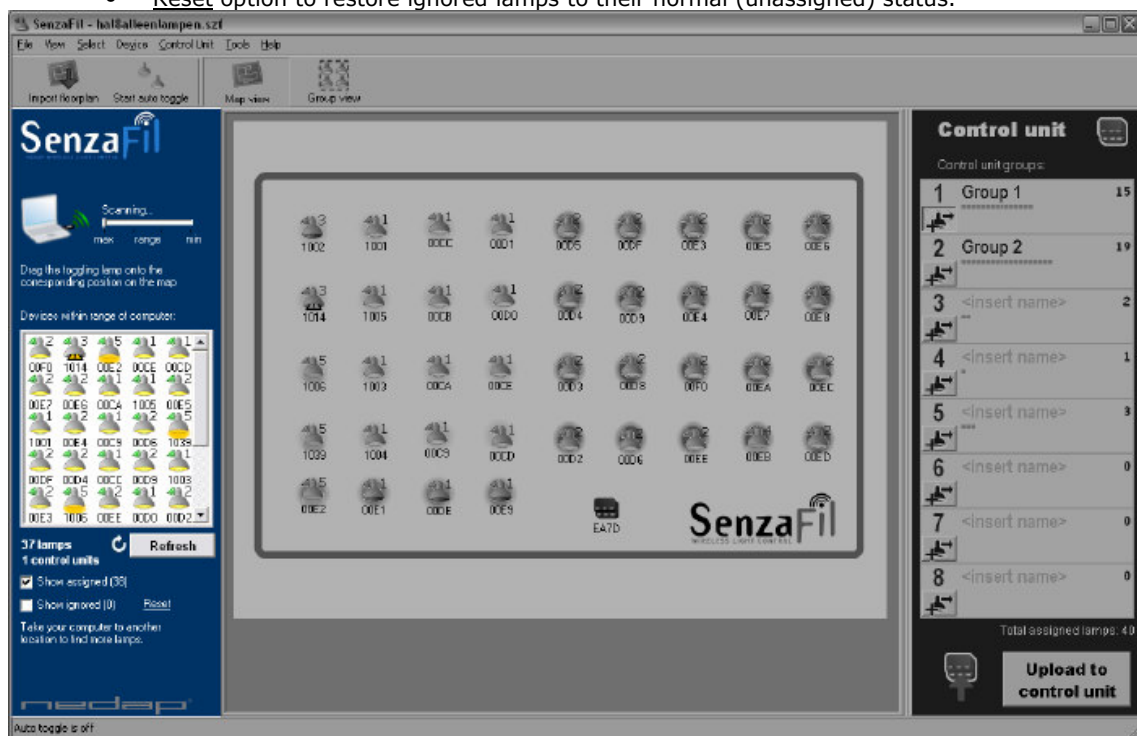
1. [Import Floorplan](#)
2. [Drag and drop Control Unit](#)
3. [Extend license](#)
4. [Locate lamps](#)
5. [Drag and drop lamps](#)
6. [Create groups](#)
7. [Upload to Control Unit](#)

Screen Appearance

The default SenzaFil screen consists of three parts.

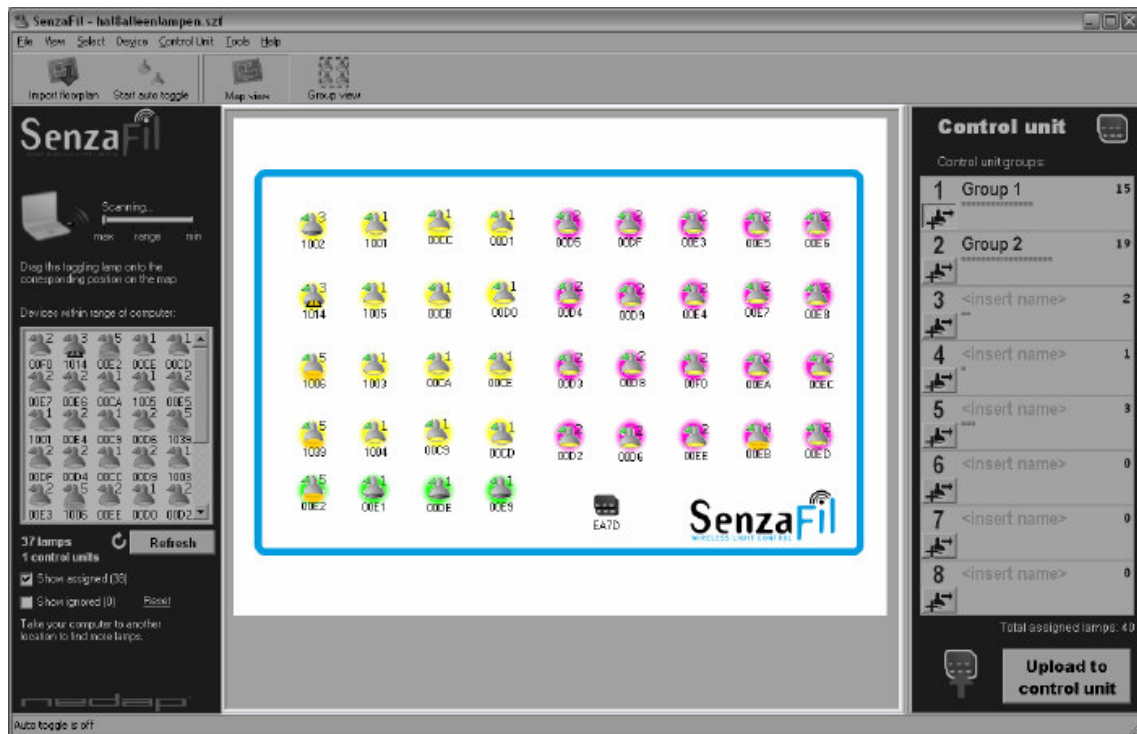
1. Left: 'Devices within range'

- a slide to adjust the computer's **range** (see [Adjusting Range](#));
- the **unassigned** control unit(s) and lamps the PC detects;
- the **number** of lamps and control units;
- **Refresh** button to update the status of the control unit and the lamps;
- two checkboxes: **Show assigned (x)** and **Show ignored (x)**;
- **Reset** option to restore ignored lamps to their normal (unassigned) status.




2. Middle: [Floorplan](#)

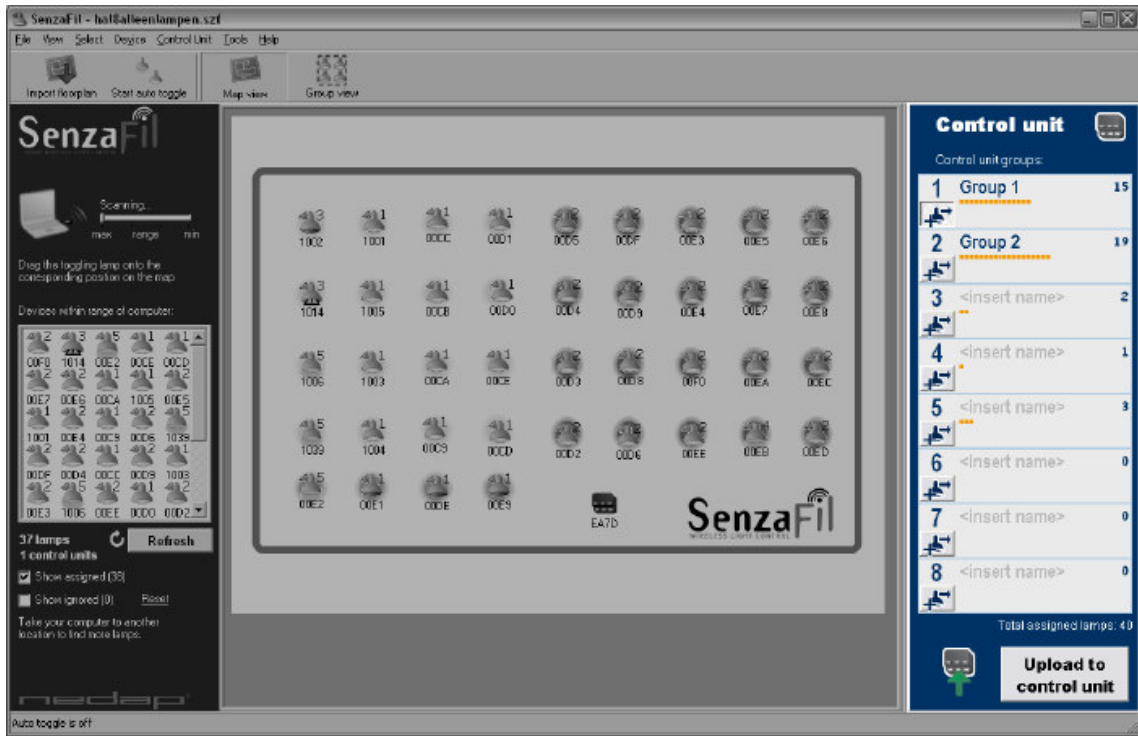
- the floorplan onto which lamps are dragged to assign them to a position).



3. Right: 'Control unit'

This window is used to assign lamps to groups.

- Individual pane for each group, containing:
 - on the left: **Add lamp to group**  button;
 - on the right: the number of lamps assigned to this group;
 - assigned lamps represented by small **orange** squares;
 - selected assigned lamps are represented by small **blue** squares;
 - at the bottom of the 'Control unit' window: total number of assigned lamps;
 - **Upload to control unit** button to upload the configuration to the control unit and the lamps.



Installation

Hardware Installation

- **Connect lamps**

Hang the lights and connect the lamps to allow them time (20 minutes) to warm up.

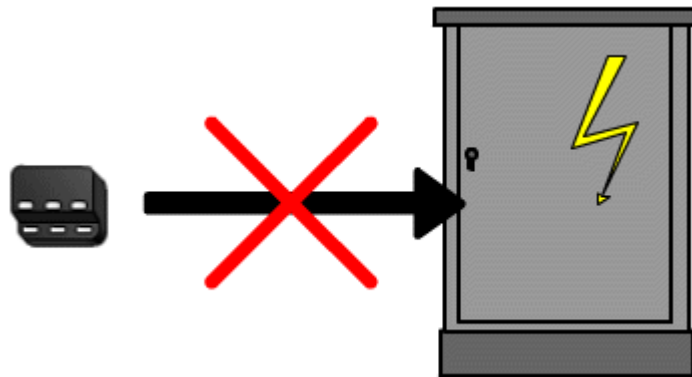


Connect the HID lamps and the SenzaFil lamp driver. The lamp's factory default setting is to burn at full voltage (100%) when the power supply is turned on. This is necessary for locating and assigning the lamps.

TIP : Switching on and assigning per circuit

- **Control Unit installation**

Install the SenzaFil Control Unit and connect the wires. For more information and the wiring schedule, see the SenzaFil Control Unit Manual.



Note: The control unit must never be installed in a metal power cabinet. This would impede wireless communication.

Software Installation

1. SenzaFil CD

Install SenzaFil configuration software from the CD that comes with the USB key. Follow the instructions on the screen.

Note: Only place the USB key in the USB port after you have installed the software!

2. SenzaFil USB key

Place the SenzaFil USB key in a USB port.

The Windows Found New Hardware Wizard will install the driver.

Configuration

Getting Started

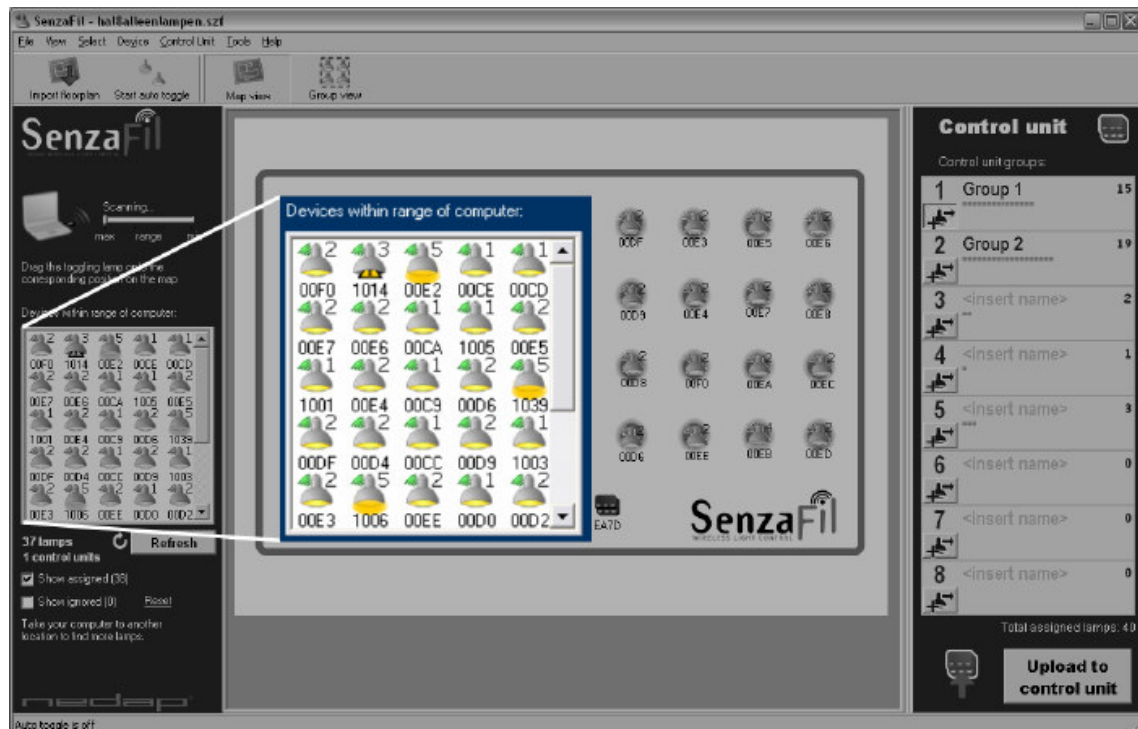
It is recommended that you assign lamps to a particular spot on a floor plan. This will make it easier to create groups and select certain lamps to dim. The SenzaFil software saves this configuration, making it easier to assign lamps to groups and to work with these. To get started, you need to:

1. [Import a Floorplan](#)
2. [Drag and drop the Control Unit](#)
3. [Extend license](#)
4. [Locate lamps](#)
5. [Drag and drop lamps](#)
6. [Create groups](#)
7. [Upload configuration to Control Unit](#)



Click on the shortcut to start the configuration program.

The lamps and the control unit are shown as icons in the 'Devices within range' window (left).



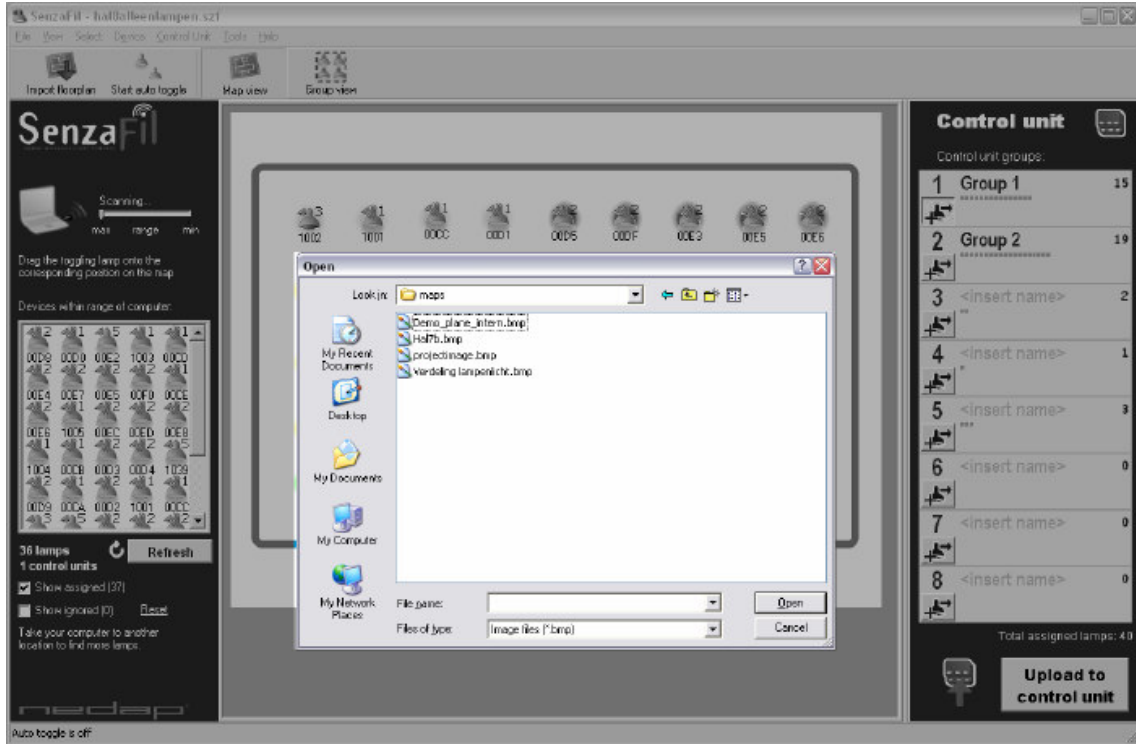
If you see too many or too few lamps, you can adjust the PC's range (see [Adjusting Range](#)).

Importing Floorplan

The middle window on the screen displays a white field (emptyimage.bmp) by default. You can either use this or import an existing or newly created floor plan in ***.bmp** format.

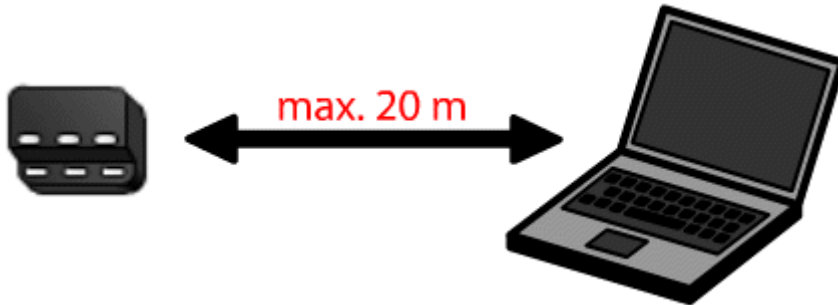
To import a floorplan:

- Click the **Import Floorplan** button in the toolbar; or
- Go to **File -> Import Floorplan**.



Drag and Drop Control Unit

Place the laptop or handheld PC with the SenzaFil software within 20 metres of the control unit to ensure that the PC can 'find' and show the control unit on the screen.



Select the control unit in the ['Devices within range'](#) window; drag and drop onto the [floor plan](#).

TIP : More than one Control Unit

Extend license

After assigning the control unit the project will work as a limited version by default. If you received a license with the control unit, or did request a license you can enter the license by choosing **Control unit > Extend license**.

Extend License

License

License:

Maximum lamps: 5

Control unit

Device ID: EA61

Network ID: 0004

Request extended license

[Mail to extend your license \(support@nedap-lightcontrols.com\)](mailto:support@nedap-lightcontrols.com)

OK Cancel

In this screen you are also able to request an extended license if you don't have a license, or if the current license allows too few lamps. By clicking the link under the 'Request extended license' heading an e-mail will be created, in this e-mail you only have to enter the number of lamps you need. In case the e-mail isn't being created you can send an e-mail to support@nedap-lightcontrols.com yourself with the required number of lamps, the Device ID and the Network ID of the control unit (which can be found in this screen).

Locating Lamps

To locate a particular lamp, you can make it blink by toggling the lamp icon in the [\('Devices within range'\)](#) window.

Note: Always check whether the lamps are fully warmed up. As long as either the warming-

up  **or cooling-down icon**  **is visible, you cannot turn on Toggle or Auto toggle.**

To start **Auto Toggle**:

- click the button on the toolbar or go to **Tools -> Start auto toggle**.

The top left lamp icon in the 'Devices within range' window will start toggling. You can identify the corresponding lamp because it will be blinking.



TIP : Auto Toggle settings

In order to make one specific lamp blink (toggle):

1. Select the corresponding lamp icon;
2. Right-click to start **Toggle**.

Drag and Drop Lamps

Drag the blinking icon to the correct location on the [floor plan](#) and drop it there (assign).

An assigned lamp is either dimmed to 50%  or switched off .

If **Auto toggle** is switched on, the next lamp icon (and corresponding lamp) will automatically start blinking.

Drag and drop this lamp onto the floor plan.

Repeat until all lamps are in the correct position and the 'Devices within range' window is empty.

TIP : Functional grouping

In order to find more lamps, you need to move the laptop/handheld PC within range of other lamps.

Repeat the toggle, drag and drop sequence.

If you do not want to assign the lamps to a particular position on a floor plan, you can also select all the lamps in the 'Devices within range' window. Drag and drop them onto the white field in the middle window.

TIP : Naming Devices/Groups

Creating Groups

Allot the assigned lamps to groups.

TIP : How to recognize assigned lamps

There are three ways to create groups:

1. Use the mouse to select the lamps and click the **Add to Group** button of the appropriate group. The group pane will display a number of small orange squares representing the lamps. Selected lamps are represented by small dark blue squares.



2. Select the lamps and drag them to the appropriate group.
3. Select the lamps and right-click to select **Assign to group** and the appropriate group number (**Group 1**, etc.).

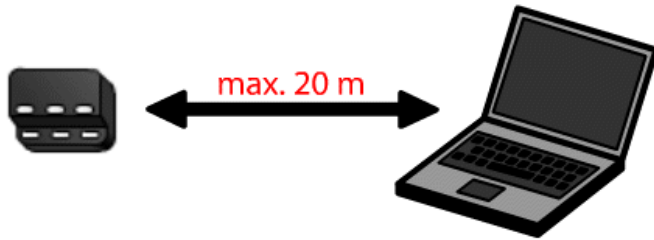


Lamps that have been assigned to a group are represented by this icon: . The number indicates the group the lamp has been assigned to. See also [Icons](#).

TIP : Group view

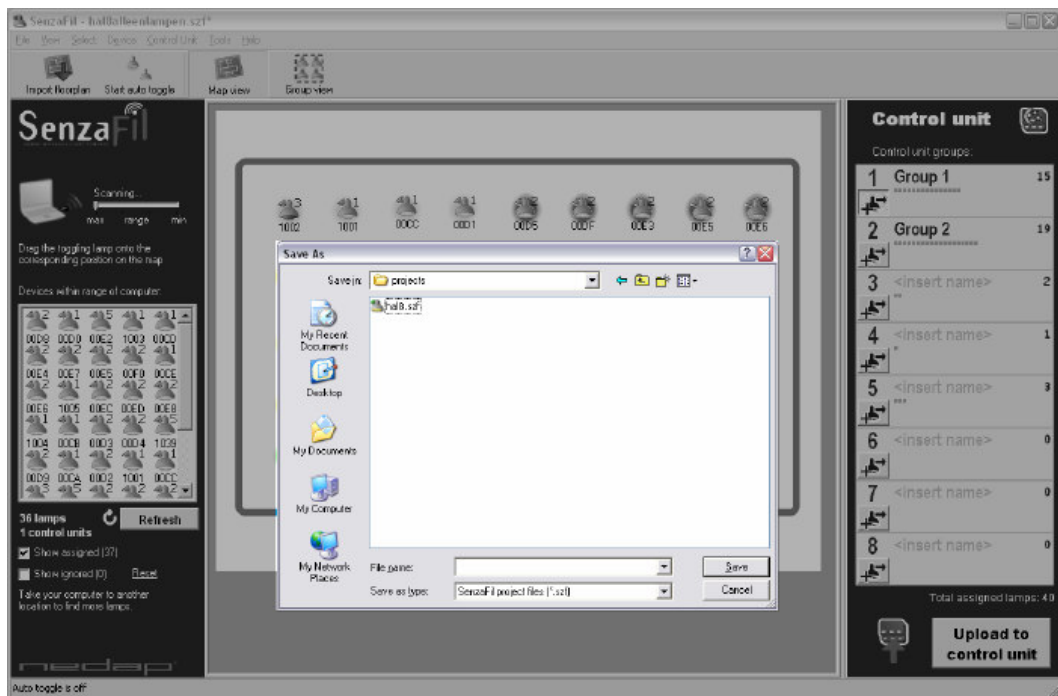
Uploading to Control Unit

In order to upload the project to the control unit and the lamp drivers, you must place your PC within a 20 metre range of the control unit.



To upload:

1. Click on the **Upload to control unit** button on the bottom right of your screen. You will be asked to save the settings (project).
2. Give the project a name. By default, projects are given a **.szf** extension (SenzaFil project file) and are saved to the SenzaFil directory.



3. Wait until the connection between the lamps and the control unit has been established. Depending on the number of lamps this can take up to several minutes. You can monitor progress in the progress pane.

Note: Uploading a new project automatically overwrites the previous one.

Tips

Setting Auto Toggle Time

To change the length of time the icon toggles and the lamp blinks:

1. Go to **Tools -> Options**.
2. Fill in the number of seconds in the 'Toggle time-out' field.

Auto Toggle

Turning on Auto toggle makes the icons blink in sequence for a (freely definable) duration, starting with the top left icon in the 'Devices within range' window. The objective is to identify the corresponding lamp so you can drag the icon to the correct location on the floor plan.

TIP: Setting Auto toggle time

The default setting for **Auto toggle** is 30 seconds. After 30 seconds the blinking stops, but the lamp remains selected. If you drag the lamp onto the floor plan within 30 seconds, the next lamp icon will automatically start to toggle.

To disable the Auto toggle function:

- Go to **Tools -> Auto toggle enable** and uncheck.

Adjusting Range

You can adjust the PC's range by moving the **slide** at the top of the 'Devices within range' window. The slide controls the number of lamps detected by the PC.


If you are working with large numbers of lamps:

1. Assign the lamps within range;
2. Move the PC within range of remaining lamps and assign those;

If you see lamps that you do not wish to assign to this control unit:

1. Select the lamps you wish to ignore.
2. Go to **Device -> Ignore** to hide these lamps. The number of ignored lamps (**Show ignored (x)**) is shown at the bottom left of the pane.

To make the ignored lamps visible:

- Check the (**Show ignored (x)**) box. This icon  represents an ignored lamp.

To reactivate ignored lamps:

- Go to **Device -> Unignore**
- or
- Click Reset, to the right of **Show ignored (x)**.

Devices vs. Lamps

There are various types of device:

- Lamp driver
- Switch
- Lux sensor
- Movement sensor
- etc.

Lamps or lamp drivers are referred to as 'devices' in the software, and as either 'lamps' or 'devices' in the manual.

See also [Device status](#)

Properties (Device Status)

1. Control Unit

To view the status of a control unit:

- Go to **Control Unit -> Properties**
- or
- select a control unit, right-click and select **Properties**.

Control unit properties

Name: <000B:EA7D>

Type: Control unit

Status: Active

Network ID	Device ID	Version
000B	EA7D	30

Update

Notes:

Lamp error level:

1	2	3	4	5	6	7	8
10	10	10	10	10	10	10	10

OK **Cancel** **Apply**

Name: Control Unit's custom name (see Naming devices/groups)

Type: Type of device, e.g. control unit

Status: Active or Suspended

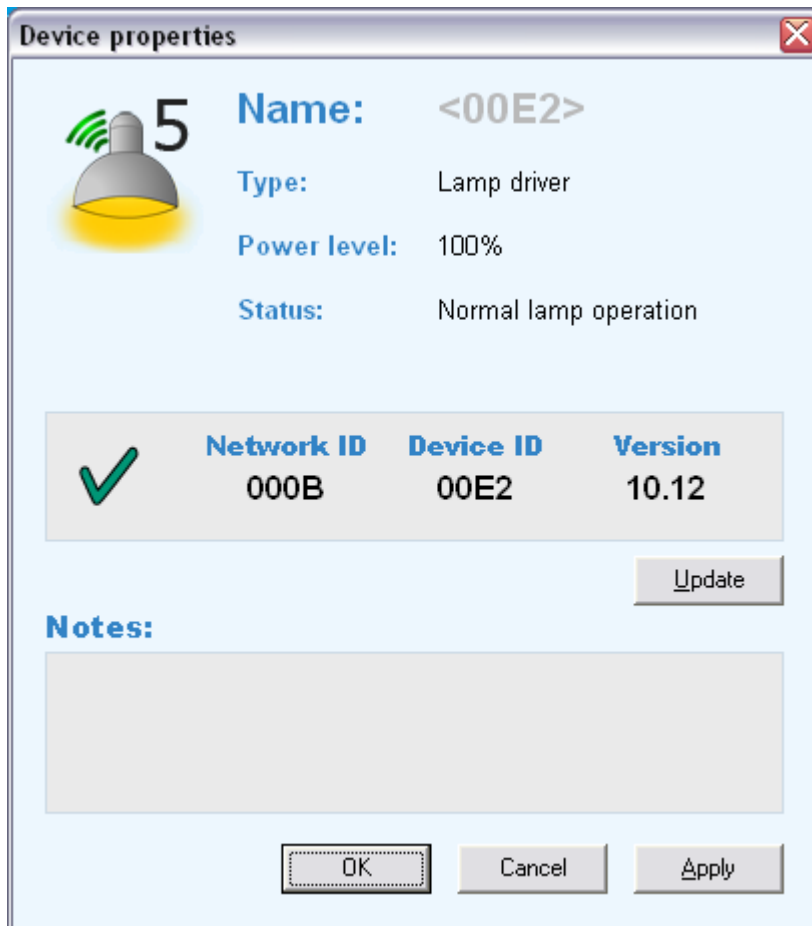
Notes: field for entering extra information on the control unit.

Lamp error level: Specifies the number of lamps in each group that will generate a lamp error message.

2. Device

To view the status of an individual lamp:

- Go to **Device -> Properties**
- or
- select a lamp, right-click and select **Properties**.



Name: Custom name of the lamp (see Naming devices/groups)

Type: Type of device, e.g. Lamp driver, Switch, Lux sensor, Movement sensor, etc.

Power level: Off, 50%, 55%, etc.

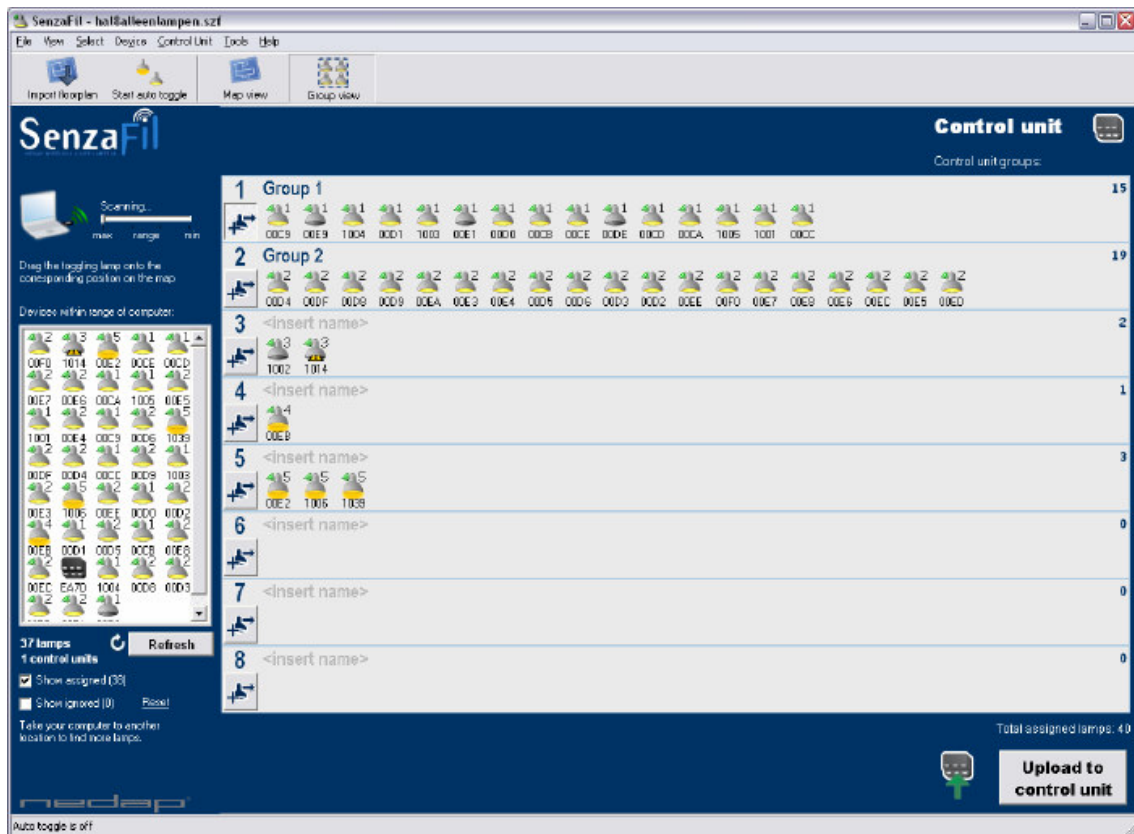
Status: Standby, Verifying startup, Ignition, Cooling down, Warming up, Error, Defective lamp or Unknown

Group view

To switch from Map View to Group View:

- Click on the **Group view** button in the toolbar
- or
- Go to **View -> Group**.









Group View expands the group window to the left, showing individual lamps (including their numbers or names) instead of squares.



To switch back to the floor plan:

- Click on the **Map View** button in the toolbar
- or
- Go to **View -> Map**.

Icons

	Control unit active	
	Control unit suspended	
	Control unit memory corrupt	Memory corrupt, control unit has to be replaced
	Factory default setting (100%)	Lamp will start to burn at full capacity when the power is switched on.
	Ignored	In 'Devices within range' window. Visible only when 'Show ignored' checkbox has been checked.
	Assigned: off	The number represents the group to which the lamp has been assigned.
	Assigned: 50%	The number represents the group to which the lamp has been assigned.
	Assigned: 100%	The number represents the group to which the lamp has been assigned.



Warming up



Cooling down



Ignition

Lamp is being ignited



Add lamp to group



Defective lamp

Lamp needs replacing.



Driver error

Functional grouping

Assign the lamps to functional groups or use the builder's or architect's specifications.

Note: These are functional groups, not circuits on the distribution board.

More than One Control Unit

If you are working in an environment with more than one control unit, you need to verify that the control unit detected by your PC is the correct one. Select **Toggle** and check whether the LEDs on your control unit are blinking.

To toggle the control unit:

- Select and right-click to select **Toggle** or
- Go to **Control Unit -> toggle**

Naming devices/groups

Control units and lamp drivers have a unique number (Device ID), which is printed on their labels. This number is also displayed under the lamp icon on the floor plan.

For ease of use, you can name the devices:

1. Select the lamp or control unit.
2. Right-click and open **Properties**

or

Go to **Device / Control Unit -> Properties**.

3. Give the lamp/control unit a name. This name now appears under the lamp/control unit icon on your screen. The internal ID remains the same and can be viewed in **Properties**.

You can choose to display the names on your screen or to turn them off:

- Go to **View -> Show lamp names** and click to check or uncheck.

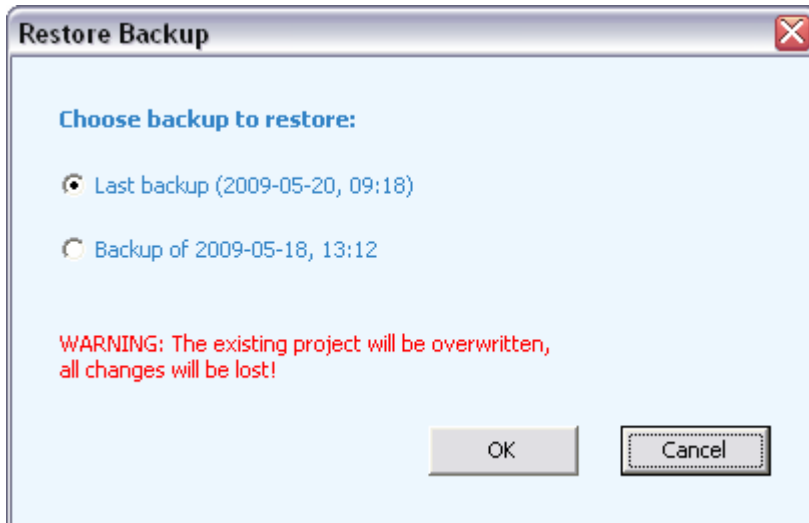
You can also name groups:

- Type a name in the **<insert name>** field in the 'Control Unit' window.

Restore backup

Should the project become corrupt or contain invalid settings for some other reason, there is the possibility to restore a backup.

For this option go to **File> Restore backup...**



In this screen you can choose which backup you want to restore, **the existing project will be overwritten by the backup!**

Two backups are kept, the last backup is the backup which is created when the project is saved for the first time since opening it, the other backup is being created up to one time per day.

Switching On and Assigning per Circuit

If you are working with large numbers of lamps in a large space, it is recommended to switch on and assign the lamps per circuit.

Recognizing Assigned Lamps




Lamps assigned to the floor plan are represented by a lamp icon (either off or burning at 50% capacity) with a green radio symbol.


The corresponding lamp is switched off or dimmed to half brightness.


To set output level after assigning:

1. Go to **Tools -> Level after assigning.**

2. Select **Off**. Assigned lamps are switched off .

or

- Select **50%**. Assigned lamps are dimmed to 50% .

- A lamp assigned to a group is represented by this icon: . The number indicates the group to which the lamp has been assigned.

Menu

File Menu

Aside from the familiar options like Open and Save, the **File** menu also gives you access to:

- **Import Floorplan:** to import a floor plan (see [Importing Floorplan](#)).
- **Restore backup...:** if the project file is corrupted you can use this option to restore a backup (see [Restore backup](#)).
- **Exit:** to shut down the SenzaFil configuration tool.

View Menu

The **View** menu allows you to switch between **Map View** and **Group View**.

- **Map**: displays the floor plan and a small version of the groups window (lamps are shown as small squares).
- **Group**: the floor plan disappears, while the group window expands to the left. Lamps are represented by lamp icons.
- **Show lamp names**: click to show or hide names.

Select Menu

In the **Select** menu you can select groups and defective lamps or lamp drivers:

- **Group 1 ... Ctrl+1; Group 2 ... Ctrl+2;** etc.): selects a single group.
- **Lamp error:** selects all defective lamps.
- **Lamp driver error:** selects all defective lamp drivers.
- **Select all ... Ctrl + A:** selects all groups.
- **Clear selections ... Esc:** to deselect.

Device Menu

The **Device** menu allows you to control a selected device (e.g. a lamp):

- **Toggle**: toggles the icon and makes the corresponding lamp blink.
- **Toggle off**: turns toggle off for the selected device.
- **Assign to group ▶**: assign this lamp or these lamps to one of the groups listed.
- **Unassign ... Del**: removes lamp(s) from group.
- **Ignore**: ignore lamp(s).
- **Unignore**: reactivates ignored lamp(s).
- **Update all**: updates the status of all devices in the project.
- **Update**: updates the status of the selected device(s).
- **Properties...**: to view and change the properties of a device (see [Device status](#)).

Control Unit Menu

The **Control Unit** menu allows you to control a selected control unit:

- **Change status:** to change the status of the control unit.
- **Toggle:** toggles the control unit icon (and makes the LEDs on the selected unit blink).
- **Toggle off:** turns toggle off.
- **Assign:** assigns the selected unit to the project.
- **Unassign:** removes the control unit, moving it back to the 'Devices within range' window.
- **Upload to control unit... F9:** saves the project and uploads the settings.
- **Extend license...:** with this option the window to extend the license, or request an extended license is being shown (see [Extend license](#)).
- **Properties...:** to view and change the control unit's properties (see [Device status](#)).

Menu Tools

In the **Tools** menu you can turn auto toggle on/off and view the **Options** task pane.

- **Auto toggle enable:** **must** be selected (checked) for Auto Toggle to work.
- Start auto Toggle: starts auto toggle.
- **Stop auto toggle:** stops auto toggle.
- **Level after assigning:** sets the output level of the lamp (either **Off** or **50%**) after assigning lamp to floor plan.
- **Language:** change the language
- **Options:** to see or change which COM port the USB key uses; to view the COM port status; to set [Toggle time-out](#).

SenzaFil Manual V2.3.4

Nedap Light Controls

PO Box 101

NL-7140 AC Groenlo

Netherlands

<http://www.nedaplightcontrols.com/>

info@nedaplightcontrols.com

Phone: +31 544 471 888

Fax: +31 544 466 008

FCC Declarations

Compliance statement (part 15.19)

This device complies with part 15 of the FCC Rules and to RSS210 of Industry Canada.

Operation is subject to the following two conditions:

- (1) this device may not cause harmful interference, and
- (2) this device must accept any interference received, including interference that may cause undesired operation.

Warning (part 15.21)

Changes or modifications not expressly approved by the party responsible for compliance could void the user's authority to operate the equipment.

RF Exposure (OET Bulletin 65)

To comply with FCC RF exposure requirements for mobile transmitting devices, this transmitter should only be used or installed at locations where there is at least 20cm separation distance between the antenna and all persons.

FCC ID: CGD-SF-USB

IC ID: 1444A-SF-USB

Copyright © by N.V. Nederlandse Apparatenfabriek - NEDAP -.

No part of this document may be reproduced or distributed in any form or by any means, or stored in a database or retrieval system, without the prior written permission of NEDAP.

Index

C

Configuration 3
 Project..... 3
Control Unit..... 12, 17, 29, 38
 Assign 12
 Drag-and-drop..... 12
 Extend license..... 13
 Menu..... 38
 More than One 29
 Range, adjust..... 21
 Toggle..... 29

D

Device 22, 23, 30, 37
 Devices vs. Lamps 22
 Menu..... 37
 Naming 30
 Properties..... 23
 Status..... 23
Disclaimer and contact information 40

F

Floorplan 11

G

Getting Started 9
Groups..... 16, 25, 28, 30
 Creating Groups..... 16
 Functional Grouping..... 28
 Group View 25
 Naming 30

I

Icons..... 26
Installation 7, 8
 Hardware 7
 Software..... 8
Introduction..... 2

L

Lamps..... 14, 15, 16, 22, 23, 30, 32, 33
 Assign per Circuit 32
 Assign to Floorplan..... 15
 Assign to Group..... 16
 Drag-and-drop 15
 Locating Lamps 14
 Naming..... 30
 Properties..... 23
 Recognizing Assigned Lamps..... 33
 Status..... 23, 37
 vs. Devices 22

M

Menu..... 34, 35, 36, 37, 38, 39
 Control Unit 38
 Device 37
 File 34
 Select 36
 Tools 39
 View 35

P

Project Configuration..... 3
 Upload..... 17

R

Restore backup..... 31

S

Screen Appearance 4

T

Toggle..... 19, 20
 Auto Toggle 20
 Control Unit 29
 Toggle time-out..... 19

W

Welcome..... 1