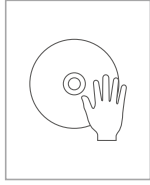
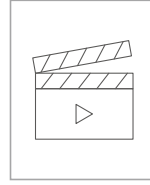


RGB18-APP Smart Ring Light Instruction Manual

1.Applications



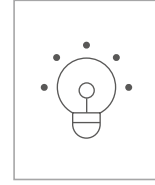
DJ



Micro-video Recording



Portrait Photography



Multifunctional Lighting

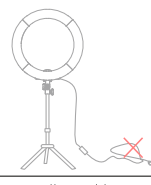
2.CAUTION



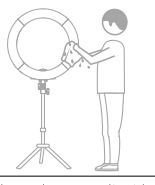
⚠ Please do not use the light in the rain or in a humid environment.



⚠ Please do not place the light within close proximity of inflammable or explosive substances.

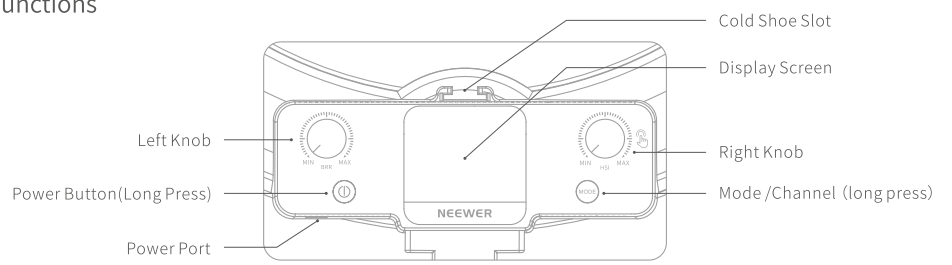


⚠ Do not allow cables to sag to prevent a tripping hazard.



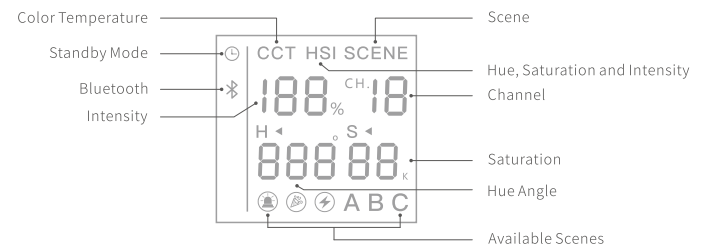
⚠ Please do not use liquids or chemicals to clean the light.

3.Functions



Long press the "⏻" power button for 1 second to power OFF/ON.
Short press "Right Knob" to switch between scenes and rotate to adjust settings.

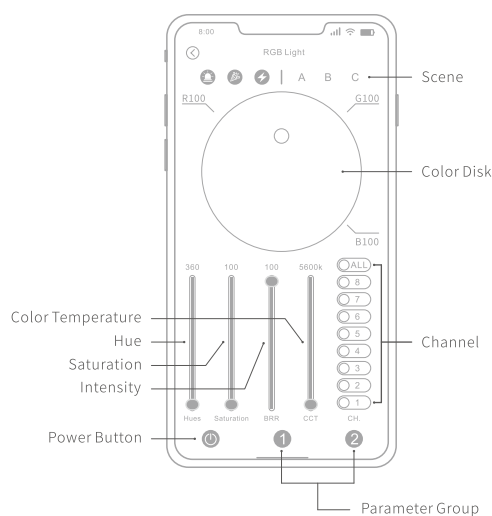
Display



NEEWER App Guide

Available Scenes are as follows:

- 1 2 3 | A B C Squad Car
- 1 2 3 | A B C Ambulance
- 1 2 3 | A B C Fire Engine
- 1 2 3 | A B C Party
- 1 2 3 | A B C Firework 1
- 1 2 3 | A B C Firework 2
- 1 2 3 | A B C Lightning 1
- 1 2 3 | A B C Lightning 2
- 1 2 3 | A B C Screen



4.Mode Function

Color temperature/Brightness



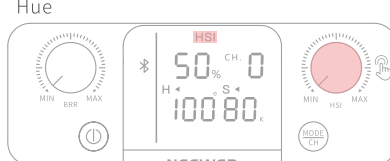
Long press the power button for 2 seconds to turn on, short press the "MODE/CH" button until the display screen shows the "CCT" mode; then rotate the knob to adjust the color temperature or brightness.

Note: Channel number "0" on the light serves as backup channel and will only work when the "ALL" button is clicked in the App.

Channel



Long press the "MODE/CH" button for 2 seconds until "CH.0" on the display screen starts to flash, turn knobs to adjust the channel from 0 to 8.



Short press the "MODE/CH" button until the display screen shows "HSI" mode and turn the "HSI" knob to adjust the hue from 0° to 360°.



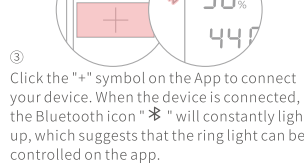
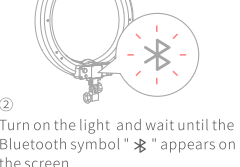
Short press the "MODE/CH" button until the display screen shows the "SCENE" mode, short press or rotate the left knob to achieve other scene effects; the right knob can adjust the brightness from 0%-100%.

In HSI mode, short press the Left Knob to switch between the hue and saturation settings. The hue and saturation level can be adjusted by long pressing the Knob.
The saturation value ranges from 0 to 100 (100 for 100%).

5.Quick-start Guidance



⚠ For Android Smartphone, please activate GPS setting before using with light. Please scan the QR code on the left to download and install the NEEWER app on your smart phone with Android or iOS system.



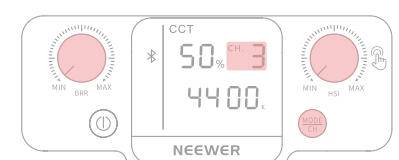
⚠ If the Bluetooth connection fails, the Bluetooth icon will constantly blink to suggest the need to recheck if the device is on.

6.Control the ring light with the App

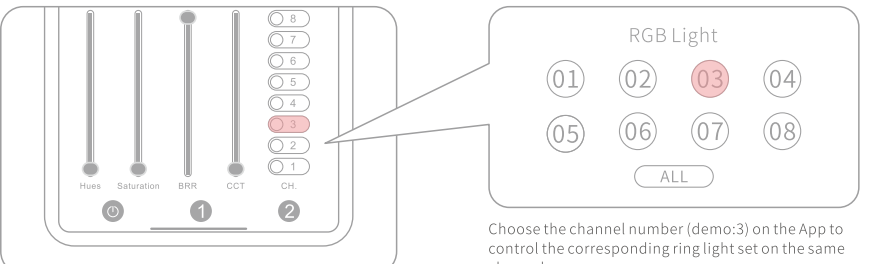
Demo: control a single ring light



Power on the light, then press the "MODE/CH" button for 2 seconds until the symbol "CH.0" flashes on the display.

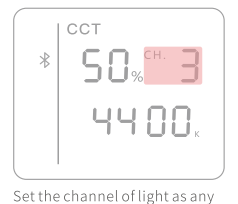


When "CH.0" symbol flashes turn the Left or Right knob on the light to switch channels from 0 to 8 (demo: Channel 3).

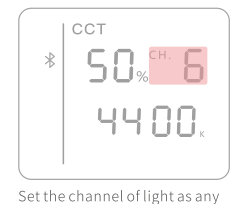


⚠ To control multiple groups of RGB lights, it is necessary to tap on the APP above to add every light control first.

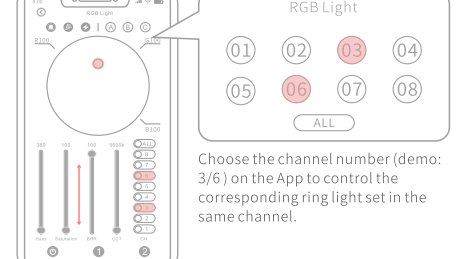
Demo: control multiple ring light respectively



Set the channel of light as any number from 1 to 8 (demo: "3").



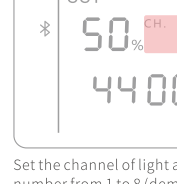
Set the channel of light as any number from 1 to 8 (demo: "6").



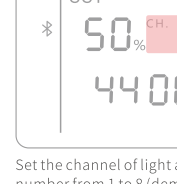
Choose the channel number (demo: 3/6) on the App to control the corresponding ring light set in the same channel.

7.Delete or disconnect a device

Disconnect a device

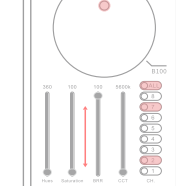


Enter the "NEEWER" App.

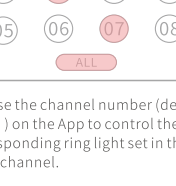


Press the light icon for one second until the confirmation window pops up. Click the "OK" button to disconnect the device.

Delete a device

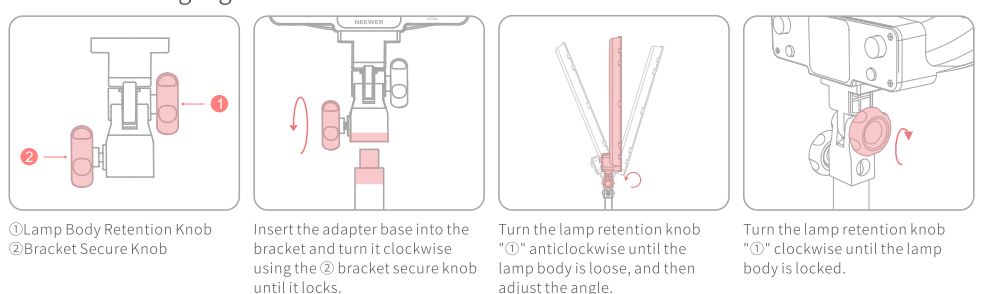


Enter the "Personal Center" and click "Delete Device".

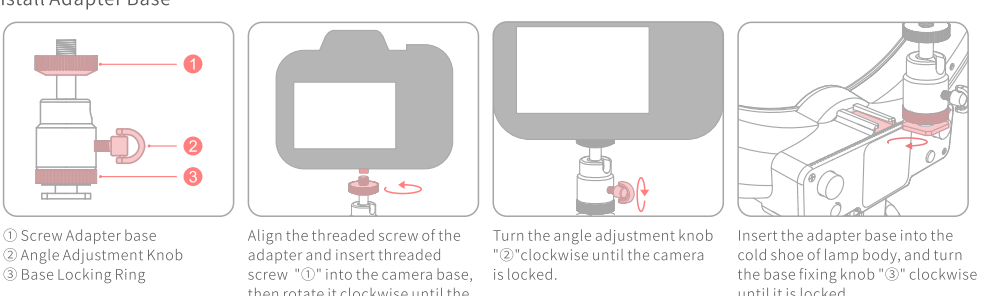


Select the device to be deleted and click "Delete".

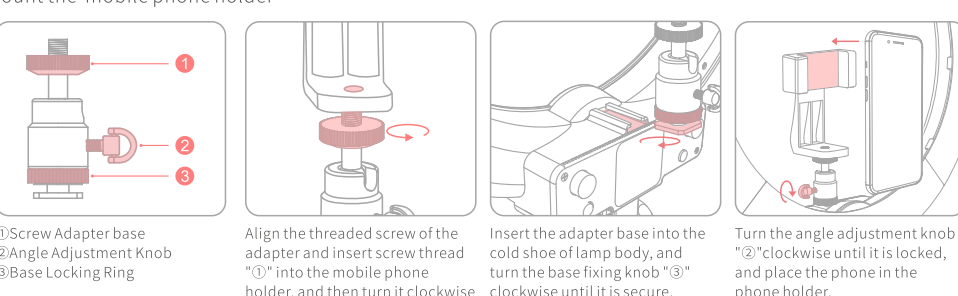
8.Install the Ring Light



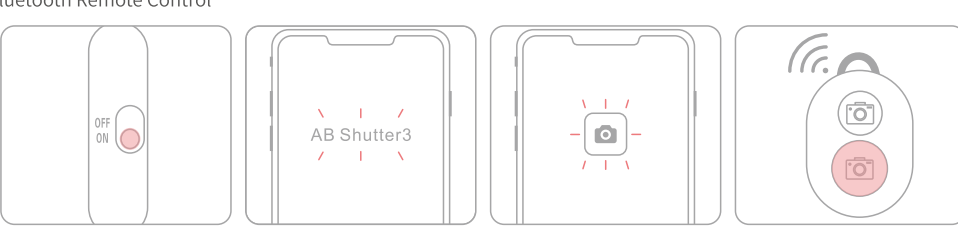
Install Adapter Base



Mount the mobile phone holder



Bluetooth Remote Control



⚠ If the indicator on the remote control does not light up, check whether the battery cover is loose or replace with a new battery.

9.Safety Notes

- Please do not stare directly at the light when in use to avoid the risk of visual impairment.
- Please do not modify cables to avoid injury.
- Please do not dismantle or modify the circuit of the item (unless a certified professional).
- Please use the power adapter in the package contents or a compatible power adapter.
- Please do not use alcohol or liquid to clean the light to prevent product damage.
- Please do not subject the product to any form of physical shock.
- Please do not expose the item to direct sunlight for long periods of time.
- Please unplug the light when not in use.
- Please use a soft cloth to wipe the product.
- Failure to follow operation procedures and warnings listed in the manual will void the warranty.

10.Product Parameters

Model	RGB18-APP
LED Quantity	288
CRI	97+
Brightness 100%(4400K)	2600LUX@0.5M 900LUX@1M
Brightness Dimming Range	0-100
Saturation	0-100
Hue	0-360
Color Temperature	3200-5600K
Input Voltage	DC12-15V
Power	42W
Dimensions	485*487*69mm

This device has been tested and found to comply with the limits for a Class B digital device, pursuant to Part 15 of the FCC Rules. These limits are designed to provide reasonable protection against harmful interference in a residential installation.

This device generates, uses and can radiate radio frequency energy and, if not installed and used in accordance with the instructions, may cause harmful interference to radio communications. However, there is no guarantee that interference will not occur in a particular installation. If this device does cause harmful interference to radio or television reception, which can be determined by turning the device off and on, the user is encouraged to try to correct the interference by one or more of the following measures:
--Reorient or relocate the receiving antenna.
--Increase the separation between the device and receiver.
--Connect the device into an outlet on a circuit different from that to which the receiver is connected.
--Consult the dealer or an experienced radio/TV technician for help

Changes or modifications not expressly approved by the party responsible for compliance could void the user's authority to operate the equipment