

## 2.4GHz Wireless Remote RT-100 Instruction Manual

**NEEWER®**

### FCC Statement:

This equipment has been tested and found to comply with the limits for a Class B digital device, pursuant to part 15 of the FCC Rules. These limits are designed to provide reasonable protection against harmful interference in a residential installation. This equipment generates, uses and can radiate radio frequency energy and, if not installed and used in accordance with the instructions, may cause harmful interference to radio communications. However, there is no guarantee that interference will not occur in a particular installation. If this equipment does cause harmful interference to radio or television reception, which can be determined by turning the equipment off and on, the user is encouraged to try to correct the interference by one or more of the following measures:

- (1) Reorient or relocate the receiving antenna.
- (2) Increase the separation between the equipment and receiver.
- (3) Connect the equipment into an outlet on a circuit different from that to which the receiver is connected.
- (4) Consult the dealer or an experienced radio/TV technician for help.

Caution: Any changes or modifications to this device not explicitly approved by manufacturer could void your authority to operate this equipment.

This device complies with part 15 of the FCC Rules. Operation is subject to the following two conditions: (1) This device may not cause harmful interference, and (2) this device must accept any interference received, including interference that may cause undesired operation.

### IC warning statements:

#### -English Warning Statement:

"This device complies with Industry Canada licence-exempt RSS standard(s). Operation is subject to the following two conditions: (1) this device may not cause interference, and (2) this device must accept any interference, including interference that may cause undesired operation of the device."  
The digital apparatus complies with Canadian CAN ICES-3 (B)/NMB-3(B).  
-French Warning Statement:  
"Le présent appareil est conforme aux CNR d'Industrie Canada applicables aux appareils radio exempts de licence. L'exploitation est autorisée aux deux conditions suivantes : (1) l'appareil ne doit pas produire de brouillage, et (2) l'utilisateur de l'appareil doit accepter tout brouillage radioélectrique subi, même si le brouillage est susceptible d'en compromettre le fonctionnement."  
Cet appareil numérique de la classe B est conforme à la norme NMB-003 du Canada.

### About This Manual

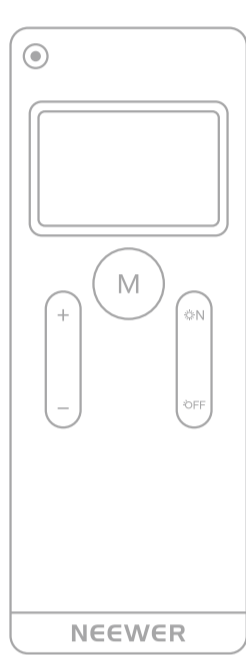
Thank you for purchasing the **NEEWER®** RT-100 2.4GHz Wireless Remote. This Manual will cover the following:

- the basic operation procedures and functions of the Wireless Remote.
- the application environment and safety use of the Wireless Remote.

### Table of Contents

1.Package Contents	1
2.Functions	2
3.Power Supply	3
4.To remotely control the ring light	4
5.Safety Notes	7
6.Caution	8
7.Product Parameters	8
8.Warranty Policy	9
9.Trademark and Statement	10
10.Contact Us	10

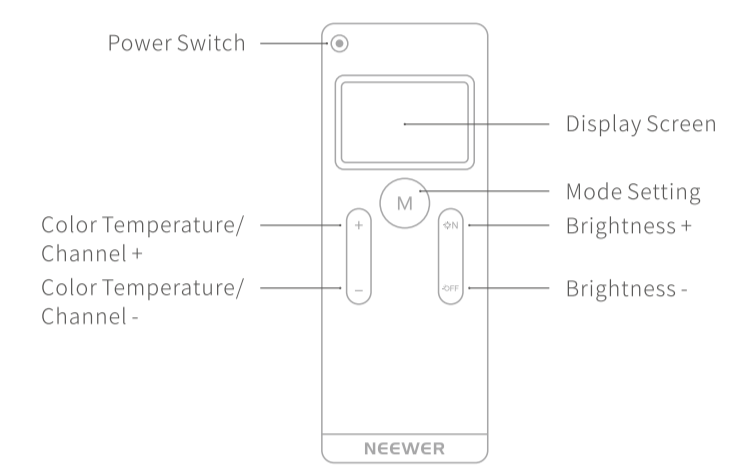
### 1.Package Contents



Upon receiving the package, please check whether all the items are included. If there is any missing or broken items, please contact Neewer Customer Service (support@neewer.com).

1

### 2.Functions



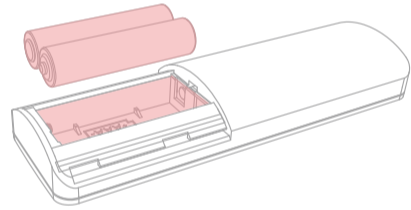
2

### 3.Power Supply

is powered by AAA  
batteries (DC)



#### Battery (DC)



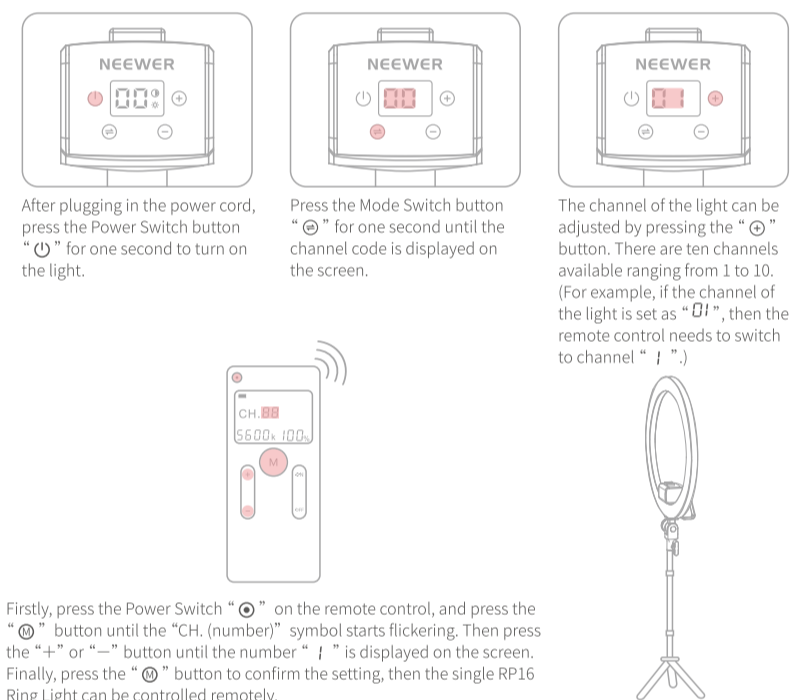
AAA

**CAUTION: RISK OF EXPLOSION IF BATTERY IS REPLACED BY AN INCORRECT TYPE. DISPOSE OF USED BATTERIES ACCORDING TO THE INSTRUCTIONS.**

3

### 4.To remotely control the ring light

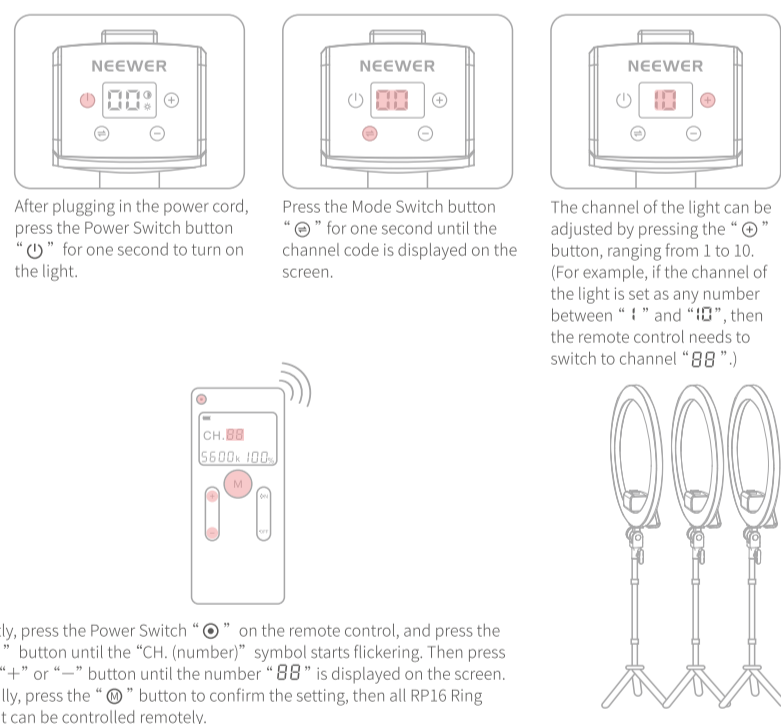
#### Demo: controlling a single ring light



There are 11 channels available on the ring light. Channel 1 to Channel 10 can match their corresponding channels on the remote control so as to control one light separately. (When controlling multiple ring lights, the channel on different lights can be set as any number from "01" to "10", then switch the remote control to Channel "08" to control all lights at the same time.)

4

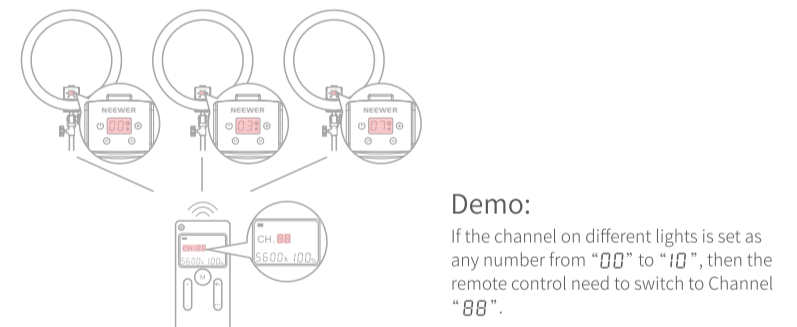
#### Demo: controlling all ring lights



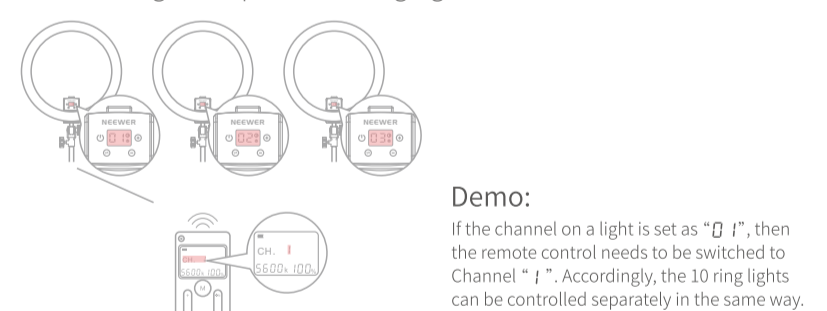
5

### Ring light multi-funtion control

#### Controlling all RP16 ring lights

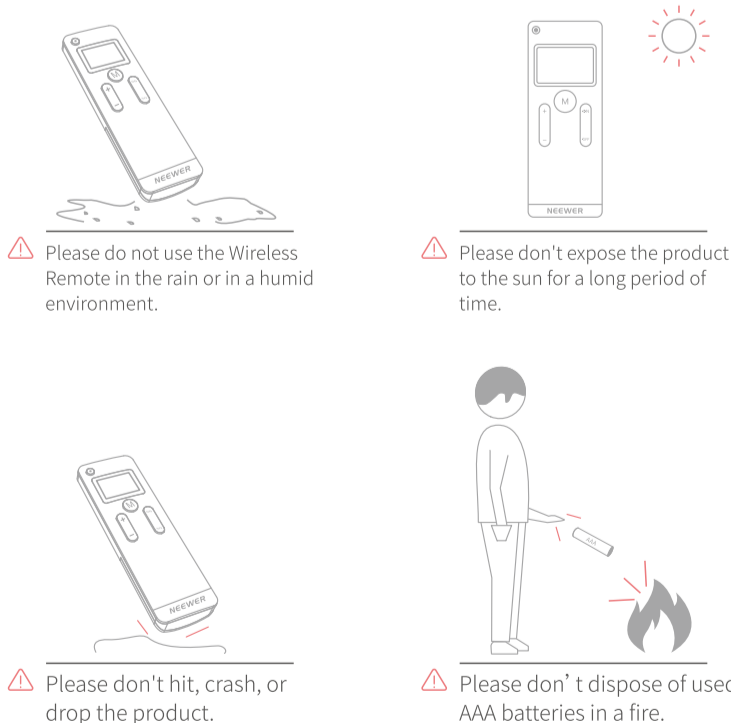


#### Controlling multiple RP16 ring lights



6

### 5.Safety Notes



7

### 6.Caution

- Please do not disassemble or modify circuit of the Wireless Remote panel.
- Please do not use alcohol or liquids to clean the light in case of product damage.
- Please be aware not to scratch the screen or surface of the remote with metal or other pointy items.
- Please remove AA batteries from the Wireless Remote if the light is left unused for long periods of time, or there might be risk of circuit damage caused by battery leakage.
- Please use soft cloth to clean the Wireless Remote.
- Failure to comply with the operation procedures and warnings listed in this manual will void the warranty.

### 7.Product Parameters

Model	RT-100
battery amount	2
Battery Type	AAA Battery
remote range	20M
working voltage	3V
Weight	44G
Dimension	40*124*18mm
<b>Extreme Temperature</b>	<b>45 °C max.</b>

8

### 8.Warranty Policy

**Warranty Period**  
You can register your NEEWER® product for its free 1-year warranty at [www.neewer.com](http://www.neewer.com). Thanks!  
Your questions or suggestion are highly valued and appreciated. Please feel free to contact us, and we will do our best to fully satisfy you. E-MAIL: support@neewer.com  
Reminder: Please keep the package box for at least 15 days because it is necessary to use the package box to protect the product during transportation.

#### Warranty Restrictions

- The following conditions are NOT covered by the NEEWER® Warranty:
- (1) The product has expired the one-year warranty period;
  - (2) The product is malfunctioned or damaged because the user did not follow the RT-100 to use, adjust, or operate the product;
  - (3) The product is malfunctioned or damaged due to rain, hailstorm, fumigation, medicine, chemicals or natural wastage; and due to force majeure (include but not limited to earthquake, Typhoon, fire, flood, violent crime);
  - (4) The user modify, dismantle, repair the product and its parts without permission;
  - (5) The user damaged the parts of RT-100 by using non-original accessories, or changed the circuit, line configuration without permission;
  - (6) The product is malfunctioned or damaged by collision or fall-off due to the user;
  - (7) Warranty Card, After-sale Service Card, invoice or item No does not conform to the product.
  - (8) An user changes the warranty service date of the product and its parts without permission;
  - (9) The panel and main parts are beyond maintenance range; The security label on the product is missing or damaged.
  - (10) The is used as a commercial product.

9

### 9.Trademark and Statement

**NEEWER®** is a registered trademark of **NEEWER®** Technology Company, Ltd, which is protected by law. **NEEWER®** company reserves all rights for this trademark.  
**NEEWER®** has continuously devoted itself to develop new products, upgrade existing products and decrease defect product rate. If you meet any questions or problems about our product, please refer to our after-sale service team or authorized service provider for help.  
The actual product may differ from the picture in this manual in color and appearance.

### 10.Contact Us

Your questions or suggestion are highly valued and appreciated. Please feel free to contact us, and we will do our best to offer satisfying services for you.  
E-MAIL: support@neewer.com WEB: [www.neewer.com](http://www.neewer.com)

10