



User's Manual

<http://www.nerophotoshow.com>

WELCOME!

Thank you for your Nero PhotoShow Elite Purchase!

We are confident you will enjoy using this software to create lasting memories for generations to come.

This User's Manual is designed to help you through each step as you Manage, Make and Share your photos, albums and slideshows. For more information, please refer to the help files (?) within the software, or visit us online at <http://www.nerophotoshow.com>.

Enjoy!

Your Ahead Software Team

Information on Copyright and Trademarks

The **Nero PhotoShow Elite** User's Manual and all its contents are protected by copyright and are the property of Ahead Software (AG). All rights reserved. This User's Manual contains material that is protected by internationally valid copyright. This manual may not-in whole or in parts- be copied, transmitted, or otherwise reproduced without the express written permission of Ahead Software.

All trademark names and trademarks are the property of their respective owners.

Ahead Software rejects any claims that transcend the legal guarantee agreement. Ahead Software does not accept any liability for the correctness of the content of the **Nero PhotoShow Elite** User's Manual. The contents of the software supplied, as well as of the **Nero PhotoShow Elite** User's Manual, are subject to change without prior notice.

The trademarks mentioned here are only listed for information purposes.

Unless you own the copyright or have the permission of the copyright holder, the unauthorized copying of discs can represent a violation of national or international laws and may result in serious penalties.

Copyright 2004 by Ahead Software AG

Contents

1	General Information: Nero PhotoShow Elite	5
1.1	General System Requirements	5
2	Installation of Nero PhotoShow Elite	6
2.1	Installation Instructions	6
2.2	The Initial Scan	7
3	Getting Started	8
4	Manage	9
4.1	Importing Photos	9
4.2	Organizing Your Photos	10
4.3	Printing At Home	11
4.4	Emailing Your Photos	11
4.5	Making A New Album	12
4.6	Watching Albums	13
4.7	Album Info	14
4.8	Managing Your Shows	15
5	Editing Your Photos	16
5.1	General Editing	17
5.2	Applying Effects	18
5.3	Touching Up Your Photos	19
5.4	Adding Clip Art	23
5.5	Adding Captions	24
5.6	Adding Frames	25
5.7	Photo Info	26
6	Making Lasting Memories	27
6.1	Making Photo Gifts	28
6.2	Ordering Prints	29
6.3	Making a Musical Slideshow	30
6.4	Making a Screen Saver	30
6.5	Making a Calendar	31
6.6	Ordering a DVD	32
6.7	Making a Video CD	32
6.8	Personalize Your Desktop	33

7	Making A Musical Slideshow	34
7.1	Making a Musical Slideshow	34
7.2	Arranging Your Show	34
7.3	Editing Your Show	35
7.4	Adding Animated Clip Art To Your Show	36
7.5	Adding Captions and Speech Bubbles	37
7.6	Modifying Photos In A Show	37
7.7	Show Options	39
7.8	Choosing a Soundtrack	41
7.9	Watching a Show and Using the Navigation Screen	42
7.10	Show Tips and Tricks	43
8	Sharing Your Photos	44
8.1	Sharing Your Photos	44
8.2	Email a Link To Your Show	44
8.3	Upload An Album To A Photo Community	45
8.4	Make A CD-ROM	45
8.5	Make a Video CD	46
8.6	Screen Saver	46
8.7	HTML	46
8.8	Make an Executable	47
9	Helpful Hints	48
9.1	Searching For Photos	48
9.2	Options	49
9.3	Tips and Tricks	50
9.4	Technical Support Contact	51

1 General Information: Nero PhotoShow Elite

Nero PhotoShow Elite allows you to capture, edit and manage your photos, create albums and slideshows, burn to CD or order a DVD, and share your special moments with friends and family.

1.1 General System Requirements

- Windows® 98SE/ME/2000/XP
- 450 MHz Pentium® III processor or faster
- 128 MB of RAM (256 MB recommended)
- Hard Drive: Minimum 80 MB free hard-disk space
- CD-ROM drive to install **Nero PhotoShow Elite**
- CD-R/RW drive to burn Photo Albums or Shows
- 800x600 video display, High Color 16-bit
- Windows® compatible sound device
- 33.6Kbps modem or faster and Internet Service Provider (account required to share online)
- Web browser that supports Flash Player
- Macromedia Flash Player V.6

2 Installation of Nero PhotoShow Elite

2.1 Installation Instructions

Prior to installing **Nero PhotoShow Elite** we recommend that you exit all open applications.

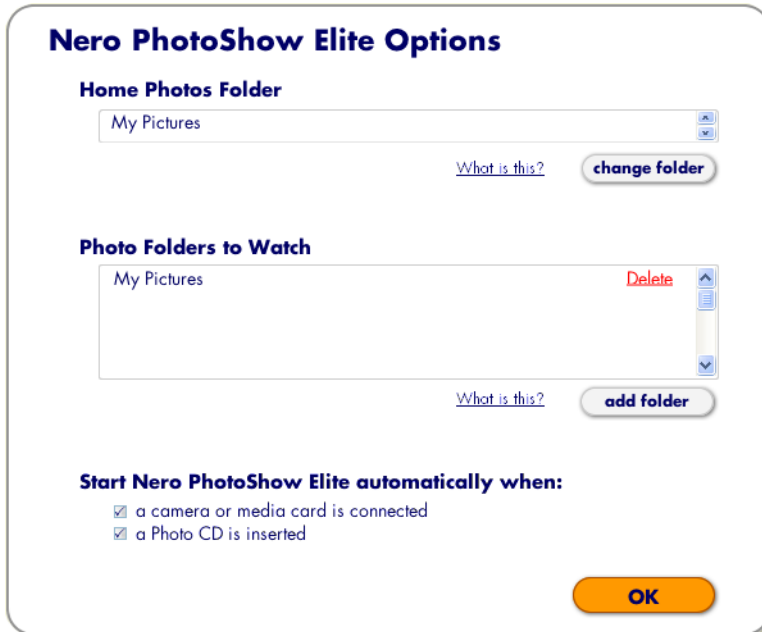
1. Insert the **Nero PhotoShow Elite** CD-ROM into your computer. The **Nero PhotoShow Elite** Installation screen is displayed if CD-ROM AutoPlay is enabled.

If CD-ROM AutoPlay is turned off, click the **Start** button and choose **Run**. In the Run dialog, enter the CD-ROM drive's letter and add

`:\setup.exe` after it. Click on OK in the Run dialog to begin installation.

2. Follow the on-screen directions within the installer to install **Nero PhotoShow Elite**.
3. At the final installer screen, click **Finish** to quit the installer and run **Nero PhotoShow Elite**.

2.2 The Initial Scan



Before the installation process begins, you will be asked to find the folder where you keep your digital photos. This is called your **Home Photos Folder**. **Nero PhotoShow Elite** will automatically scan all folders under your **Home Photos Folder** for digital photos and automatically import them into albums.

This quick process enables you to use **Nero PhotoShow Elite** immediately and saves you the trouble of importing each photo from your collection at a later time.

Any new photos that you import to **Nero PhotoShow Elite** from your digital camera will be placed in your **Home Photos Folder**, so you can easily locate them.

Your **Home Photos Folder** is also set as a **Watch Folder**. If you remove photos or folders from your **Watch Folder**, the corresponding photos or albums will be removed from **Nero PhotoShow Elite**.

3 Getting Started



Welcome to **Nero PhotoShow Elite**, your easy and complete photo experience.

This is the main menu of **Nero PhotoShow Elite** which you will use to navigate through the application.

Click **Manage** to organize, edit, and print your photos.

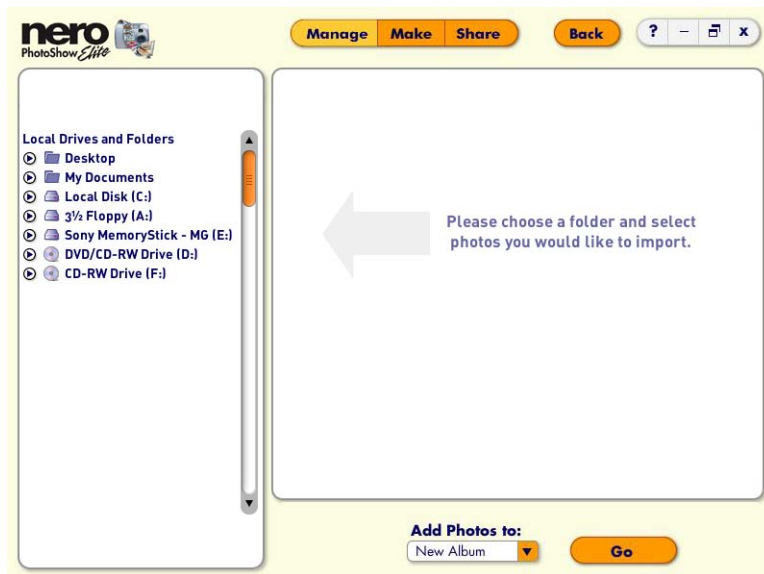
Click **Make** to create things from your photos like musical slideshows, DVDs, photo gifts, screen savers, wall paper, and more.

Click **Share** to share your photos online with friends and family, or burn your photos to a CD-ROM or Video CD.

If you are experiencing any difficulties, click the help button (?) to guide you with the screen you are working on.

4 Manage

4.1 Importing Photos



1. On the **Manage** screen, click **Import Photos** to add new photos to **Nero PhotoShow Elite**. On the left you will see a list of folders and devices (like digital cameras) that are connected to your computer. The photos that you select to import will be copied to your **Nero PhotoShow Elite Home Photos Folder**.

When you connect your digital camera to your computer, **Nero PhotoShow Elite** will run and offer to copy your photos to your **Home Photos Folder** and display them as an album in **Nero PhotoShow Elite**.

4.2 Organizing Your Photos



The **Albums** tab located on the **Manage** screen allows you to organize your photos into albums. **Albums** allow you to sort your photos into groups that have a common theme, just like an actual photo album.

On the left hand side of the **Manage** screen is a list of your **Albums**.

1. You can sort your albums by selecting an option from the **Sort** menu, make a new album by clicking **New Album**, import photos into **Nero PhotoShow Elite** by clicking **Import Photos**, or search for albums by clicking **Search**.
2. Once you've opened your album, you can change its name by clicking **Info**, or watch a full-screen slide show of the photos by clicking **Watch**.
3. To print or email the photos, select **Print** or **Email** beneath the displayed photo. The size of the album icons and photo thumbnails can be changed by clicking on the **Size** menu and selecting either large or small.

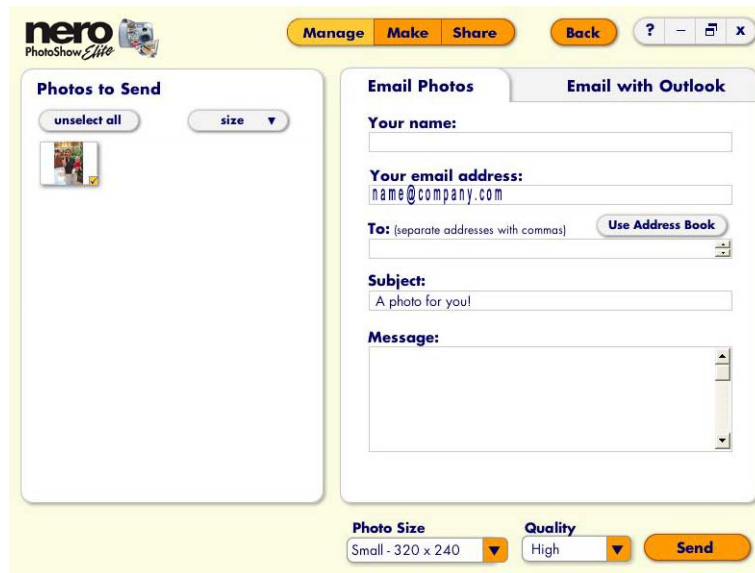
4.3 Printing At Home

With **Nero PhotoShow Elite**, you can easily print your photos with your home printer or order professional quality prints online by clicking **Print**, and making your selection from the drop down menu.

To use your home printer, select the photos you would like to print by checking their thumbnails on the left. You will see a larger preview of what is to be printed on the right. Click **Printer Settings** to set the printer you would like to use and adjust its settings.

The **Layout** menu allows you to select many layout options including formatting support for Avery® digital photo paper. Once you are happy with your settings and the print preview, click **Print** to start printing.

4.4 Emailing Your Photos



Nero PhotoShow Elite allows you to easily email photos and albums to your friends and family.

1. Select the photos you want to send and then press the **Envelope** icon, which will take you to the **Email** screen.
2. The **Email Photos** tab lets you send photos as attachments through **Nero PhotoShow Elite**'s mail server or **Email with Outlook** which lets you create a new message in Microsoft Outlook with your photos automatically attached.

3. The **Sending Options** lets you change the attached photo's dimensions with the **Photo Size** menu. You can also control how big the attached photo is and how it will look with the **Quality** menu. Higher quality settings will produce a larger file size. If you're sending photos to people with slow internet connections, then you should use smaller photo sizes and a lower quality setting.

4.5 Making A New Album

You can easily make a new album by clicking **New Album**.

1. You can choose to add any photo from an existing album in **Nero PhotoShow Elite**, or add new photos. If the photos you want to use aren't already in an album, click **Import Photos**.

2. If you can't find the photos you want to use, click **Search** to search through your photos in **Nero PhotoShow Elite**.

3. After you select your photos, click **Make Album** to create a new album containing these photos.

For example, if you would like to make a new album containing only pictures of your Mom, you would click **New Album** on the **Manage** screen, then select the photos of your Mom, and finally click **Make Album** to create the new album.

4.6 Watching Albums



Clicking **Watch** displays the photos in your album as a full-screen slideshow. You can always advance to the next photo by clicking the **Right Arrow**, or view the previous photo by clicking the **Left Arrow**.

1. To rotate your photo, click the **Rotate Arrows**. Click the red "X" to remove your photo from its album and place it into **Nero PhotoShow Elite's** trash.
2. The **Edit** button enables you to edit the photo you are currently viewing.
3. If at any time you would like to stop the slideshow, click **Stop**. When the slideshow has stopped, you can start it again by clicking **Start**.
4. You can change the time duration that the photo is displayed by selecting duration from the **Speed** menu.
5. You can always return to the previous screen by clicking the **Back** button.

4.7 Album Info



Album Info

Album Name
Family Photos

Group My Albums ▾ **Album Date** 4/7/2004

Starring
The Smith Family

Comments & Keywords
Vacation 2004

Rename photos in album: (Family Photos-1.jpg, Family Photos-2.jpg, ...)
Family Photos

OK Cancel

The **Album Info** screen is where you can change the **Album Name**, **Album Date**, or **Album Icon** (photo that represents the album).

You can also assign the album to a different group from the **Group** menu. The **Group** menu allows you to organize your photo albums. For example, one group of albums could be used for vacation photos and another for pet photos.

The **Starring** field allows you to enter the names of the people who appear in the photos. You can also add comments or keywords that describe the photos into the **Comment & Keywords** field so you can easily search for them at a later time.

You have the option to rename the photos in your album by checking the button next to **Rename photos in album**. When you click **OK**, each photo will be assigned a new file name that consists of the current album name (or whatever you type into the text box), a hyphen, and a number that represents its position in the thumbnail browser.

For example, if your album is named "Favorite Photos", and you chose to rename the photos in that album, the resulting photo names would be "Favorite Photos-01.jpg", "Favorite Photos-02.jpg", "Favorite Photos-03.jpg", and so on.

4.8 Managing Your Shows



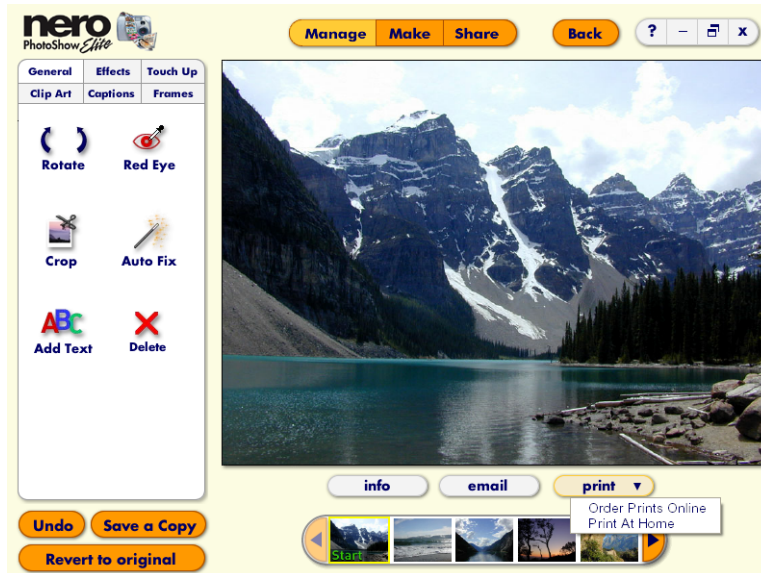
The **Manage** screen's **Shows tab** is where you can edit and view musical slideshows. **Nero PhotoShow Elite's** musical slideshows offer a unique and entertaining way for you to enjoy and share your favorite photos.

On the left hand side of the **Manage** screen is a list of your musical slideshows.

1. You can sort your shows by selecting an option from the **Sort** menu, or you can make a new show by clicking **New Show**.
2. The size of the show icons can be changed by clicking on the **Size** menu and selecting either large or small.
3. Place your mouse over a show icon and click **Watch** to watch your show, **Edit** to edit your show, **Share** to share your show, or the red **'X'** to delete your show. You can also delete a show by dragging its icon to the orange trash can.

For more information on musical slideshows, please visit Section 7 of this manual.

5 Editing Your Photos



With **Nero PhotoShow Elite**, you can touch up and edit your photos to perfection with a variety of easy to use tools.

Feel free to experiment with photo editing since you can always undo your last edit by clicking **Undo** or restore your original photo by clicking **Revert to Original**. You can save a copy of your edited photos at any time by clicking **Save a Copy**.

To change the photos file name or it's dimensions, click **Info** located below the displayed photo to open the **Photo Info** screen. You can also email this photo by clicking **Email** or print it by selecting an option from the **Print** menu. The **Print** menu lets you order prints online or print the photo on a printer connected to your computer.

At the bottom of the screen is a thumbnail browser which lets you open other photos in your album and edit them. All photo editing tools can be easily accessed using the tabs on the left side of the screen.

5.1 General Editing



Before



After

1. The **General Edit** section lets you do many things with just a single mouse click. You can rotate your photo by clicking the **Rotate Arrows**, automatically improve the look of your photo by clicking **Auto Fix**, add text to your photo by clicking **Add Text**, and delete your photo by clicking **Delete**.

2. To remove red eye, click **Red Eye**, drag the selection rectangle around the red portion of the person's eye, and then click **Fix**. For best results, try to fit the square close to the red portion of the eye and don't include other parts of the face.



Before



After

3. Cropping is one of the easiest ways to improve the quality of your photos. It enables you to focus on the important aspect of your photo and remove unwanted areas.

- a. To crop your photo, click **Crop** and select the area of the image you want to keep by dragging on one of the corners of the box. Move the crop area by clicking inside it and dragging it over to the part of the photo that you want to keep.
- b. Click **Save Crop** when you are satisfied with your crop selection.
- c. Click **Cancel Crop** to return to the original photo.

5.2 Applying Effects



The **Effects** section allows you to apply many effects to your photos from simple level adjustment (brightness, contrast, and saturation), to refinishing your photo to look like it was taken one hundred years ago.

A slider is provided to adjust the impact you want each effect to have and a real time preview of the effect will be displayed above the slider.

When you are satisfied with the preview, click **Apply** to see the effect on the larger photo. There are lots of fun effects to choose from, so feel free to experiment and remember that you can always press **Undo** to remove unwanted changes.

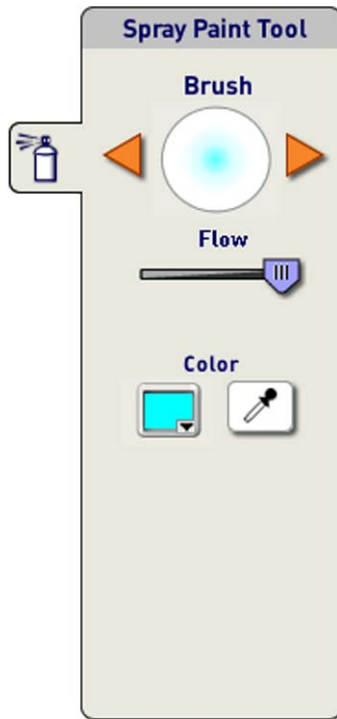
5.3 Touching Up Your Photos

The **Touch Up** screen allows you to fix common problems you may experience with your photos. Remove dust spots or other blemishes from older print photos that may appear while being scanned. With a little practice, you can even remove any unwanted items from your photos. The **Touch Up** screen is a lot of fun, so experiment with it and see what you can create.



1. With the **Paint Brush Tool**, you can paint on your photos using different size brushes.

Select your desired brush size by clicking the orange triangles on either side of the **Brush**. You can change the transparency of the paint by adjusting the **Blend** slider. Change the color of the paint by clicking the **Color** menu and then clicking the color that you want to use.



2. The **Spray Paint Tool** lets you spray paint on your photos just like using a can of spray paint or an airbrush. With this tool, the longer you hold the mouse button down without moving it, the more paint will build up on the photo.

a. Select different brush sizes by clicking the orange triangles on either side of the **Brush**. You can change how quickly the paint builds up by adjusting the **Flow** slider.

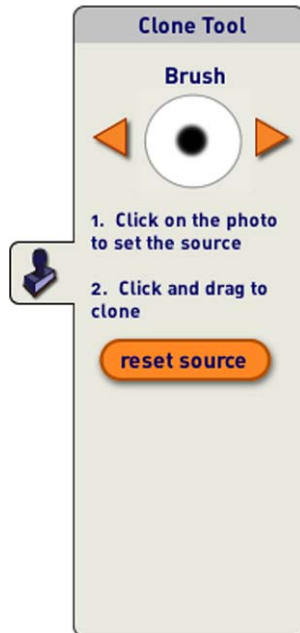
b. Change the color of the paint by clicking on the **Color** menu and then click the color that you want to use.

c. The **Eye Dropper** feature allows you to select an exact color that can be found on your photo. Click on the color from your photo that you wish to paint with, and it will appear in the **Color** menu.

3. The **Smudge Tool** can remove small blemishes such as dust spots, hairs, or scratches from your photos. Select different **Smudge Tool** sizes by clicking the orange triangles on either side of the **Brush**.

To remove a blemish, you need to use the **Zoom Tool** to zoom in on the blemish in your photo. Then, click on the blemish with the **Smudge Tool** to blend it with the other colors around it. When you zoom back out to normal size, the blemish will be much less noticeable.

Editing Your Photos



4. The **Clone Tool** allows you to remove any unwanted portion of your photo by copying a different portion from your image over it. For example, an airplane can be easily removed by copying something over it, such as a cloud, and a scratch in a scanned photo can be corrected by copying an adjacent portion of the image. The possibilities are endless!

a. To begin using the clone tool, click the mouse on an area that is close to a blemish that you would like to remove. This is the portion of your image that will be cloned.

b. Then, click and drag over the blemish or object that you would like to remove. You will be able to 'paint' with the first area where you clicked on the second area where you are painting.

c. Select different **Clone Tool** sizes by clicking the orange triangles on either side of the **Brush** type.

d. If you want to reset the source of the area you are cloning, click **Reset Source** and then click on a new source location in your photo.

5. The **Zoom Tool** allows you to enlarge any part of your photo. Use this tool along with the **Smudge** or **Clone Tools** so you can zoom in on a blemish and remove it without affecting the rest of your photo.

Please note that the **Zoom Tool** does not actually change your photos. It is designed to be used with another tool to allow a greater degree of precision while editing.

To zoom in, click the **plus magnifying glass** and then click on the portion of your photo that you would like to enlarge.

To zoom out, click the **minus magnifying glass** and then click on your photo to zoom out.

Click **Fit on Screen** to magnify the image to fill the entire screen.

Viewing a photo in its **Actual Size** will create a one to one relationship between the pixels contained in your photo and the pixels on your monitor. High resolution photos will appear very large in this view, as some photos contain more pixels than many of today's monitors.

6. The **Hand Tool** is useful while zoomed in on a photo. Click and drag the Hand Tool to navigate to different areas of your zoomed photo without editing your photo.

7. The **Eraser Tool** lets you erase work that you have done with any of the **Touch Up** tools. Select different eraser sizes by clicking the orange triangles on either side of the **Brush**. The **Eraser Tool** only works when something has been edited with another **Touch Up** tool.



8. The **Selection Tools** can be used to duplicate a portion of your photo or fill a selected area with a solid color. This can be very useful for fixing blemishes in photos and can also be used to create fun collages!

- The **Marquee Selection Tool** can be used for making rectangular selections.
- The **Lasso Selection Tool** can be used for drawing free selection areas with your mouse.

a. Once you have chosen your desired selection tool, click and drag around the area of your photo that you would like to select. You will see a blinking selection line that defines your selection.

b. You can move your selection by dragging it to a different area of the photo.

c. You can **Cut** or **Copy** a selected area and **Paste** it someplace else. Cutting will remove the selection from the photo and save it on a clipboard. The selected cut area in the photo will then appear in white.

d. Copying a selection will place the selection on a clipboard without removing it. Click **Paste** to paste the cut or copied selection onto your photo. You can cut, copy, and paste favorite portions of your photos onto other photos to create a fun and exciting collage.

9. The **Paint Bucket Tool** fills a selected area with a solid color. To do this, first make a selection on your photo. Then, click the **Paint Bucket Tool** and choose a color from the **Color** menu. Now, click on the selection and see the color you chose fill in the selection.

5.4 Adding Clip Art



The **Clip Art** section allows you to add fun clip art to your photos.

1. You can scroll through the clip art by clicking the **Left and Right Arrows** at the top of the clip art window. If you know which category your desired clip art is located, you can use the **Category** pull-down menu to go directly to it.

2. Click on the piece of clip art you would like to add and drag it to your photo. Clip art can be dragged anywhere on your photo and can be resized with the **Clip Art Zoom** slider which is located below the photo.

To remove a piece of clip art, click **Delete**.

5.5 Adding Captions



The **Captions** section allows you to add captions and speech bubbles to your photos.

1. After clicking the **Captions** tab, you can drag the caption to any place on your photo and type your text into the caption.
2. To reposition your caption, click on the caption and then click and drag the handle.
3. Change the size of your caption by clicking and dragging the **Caption Zoom Slider** beneath your photo.
4. You can also change the font of your text, color, and style by clicking on the corresponding menus under the photo. Remove a caption by clicking **Delete** or **Revert to Original**.

5.6 Adding Frames



The **Frames** section allows you to add a frame to any photo.

1. Use the **Frame** menu to select from the different frame categories. You can remove the frame by clicking **No Frame** or **Revert to Original**.

5.7 Photo Info



Photo Info

Name
Family Photos-04.jpg

Date 2/11/2004 **Dimensions** 800x533

Starring
Mom & Elisa

Comments & Keywords
Morning Hugs

Rate this photo
★ ★ ★ ★ ★ [learn about ratings](#)

OK **Cancel**

To change the photos file name or its dimensions, click **Info** located below the displayed photo to open the **Photo Info** screen.

1. In the **Starring** field, you can enter the names of people who are featured in your photos.
2. In the **Comments & Keywords** field, you can enter comments and keywords describing the photo. You can search for these words whenever you want to find a specific photo.
3. You can also **Rate This Photo** by assigning up to five stars to it. Each photo starts at a 2 star rating when you import it into **Nero PhotoShow Elite**. If you don't manually rate a photo, its rating will increase every time you email it or print it. This feature helps you easily find your favorite photos by using the **Search** menu.

6 Making Lasting Memories



The **Make Screen** is the starting point for making fun items with your photos.

The **Photo Gifts** section enables you to create unique gifts using your favorite photos.

Order Prints lets you order professional quality prints with prompt delivery services.

Make a musical slideshow with your photos in the **Musical Slideshow** area.

Turn your photos into a **Screen Saver** for your computer.

Order and create a **Calendar** made from 12 of your favorite photos.

Order DVD to get your favorite slideshow delivered to you on a custom DVD.

Watch your photos on your TV by creating a **Video CD**.

Desktop Picture lets you use any photo as your computer's desktop background.

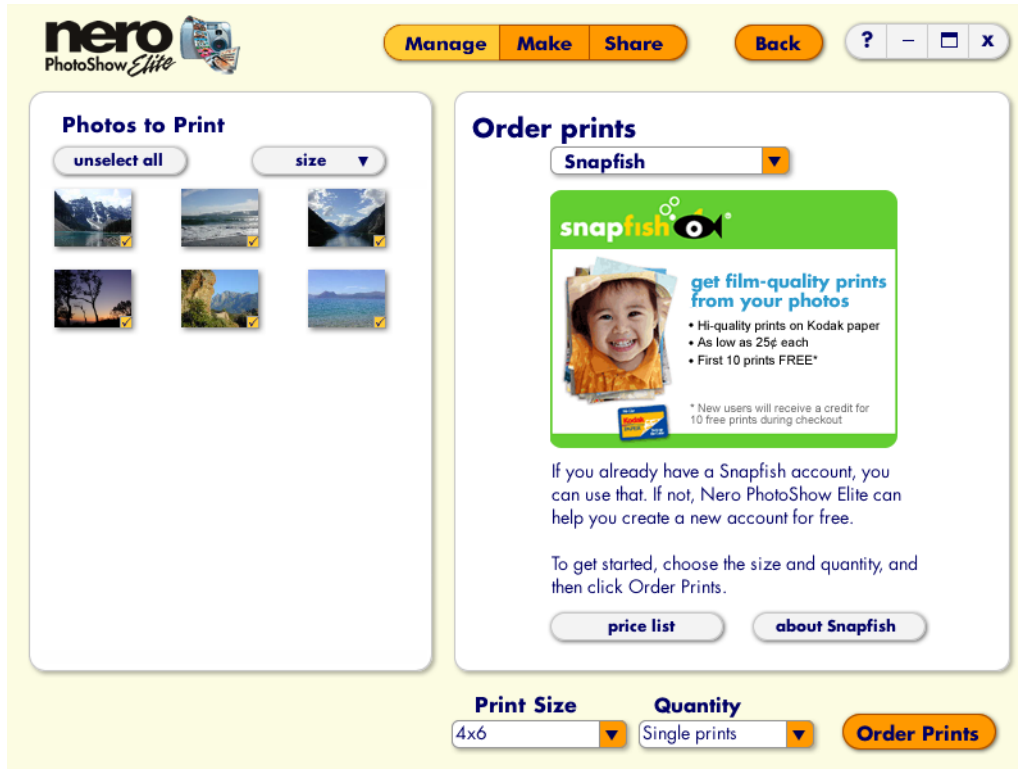
6.1 Making Photo Gifts



Clicking on **Photo Gifts** lets you create and order different items that have your photos on them. You have the option of making mugs, clothing, puzzles and games, gifts for the home (mouse pads), and even calendars.

1. Select the type of gift you would like to make and pick a photo you want displayed on your gift from your list of albums. You will then see a 3D preview of what your gift will look like with your photo on it. To make sure your gift turns out exactly how you would like, you can crop your photo before placing your order.
2. After you click **Continue**, follow the on screen instructions to complete your order.

6.2 Ordering Prints



With **Nero PhotoShow Elite**, you can easily order professional quality prints of your photos and have them mailed to your door at a low price.

1. To begin, select **Order Prints** from the **Make** screen.
2. Select the photos you would like to order prints of by checking their thumbnails on the left. You have the option of ordering prints from

Snapfish or Shutterfly. You can choose from which company to order your prints by selecting an option in the **Order Prints From** menu.

If you don't have an account with either company, you can easily create one from inside the **Nero PhotoShow Elite** interface.

3. To order prints online, you need to be connected to the Internet.

Note: When you receive a warning that a certain print size is not recommended, this warning is to inform you that the print quality at that size may not look good. To avoid ordering a low quality print, we recommend that you do not order prints at a size that is not recommended. You'll get excellent results as long as you follow this simple guideline: "high quality digital prints start with high quality digital photos." Reversely, photos with very low resolution (like

most camera phones) will rarely produce great looking prints, especially at larger sizes. Please refer to this chart to determine the minimum image size you need to produce quality prints:

Print Size	Minimum image resolution required
4 x 6	640 x 480 pixels
5 x 7	900 x 600 pixels
8 x 10	1280 x 1024 pixels

6.3 Making a Musical Slideshow

With **Nero PhotoShow Elite**, you can create a great looking slideshow of your favorite photos and share it online for friends and family living all around the world.

1. To begin, just click on **Musical Slideshow** and select the photos you want to include from your current albums.
2. After you select the photos to include, click **Make Show** and enter the name of your new slideshow in the dialog that appears then click **Continue** to go to the slideshow screen.
3. If the photos you want to use aren't already in an album, click **Import Photos** to import the new photos.
4. If you can't find the photos you want to use, click **Search** to search through your photos in **Nero PhotoShow Elite**.

For detailed information on musical slideshows, please visit **Section 7** of this manual.

6.4 Making a Screen Saver

Nero PhotoShow Elite lets you easily make a screen saver featuring any of your favorite photos.

1. Click **Screen Saver** on the **Make** screen and then find the photos you want to use from your albums.
2. If you can't find the photos you want to use, click **Search** to search through your photos in **Nero PhotoShow Elite**.
3. After selecting the photos you want to use, click **Make Screen Saver** to create the screen saver on your computer. You will be asked to name the screen saver and choose whether to use it as your default screen saver or cycle through all the screen savers on your computer.

6.5 Making a Calendar



Nero PhotoShow Elite lets you create and order custom calendars that display your favorite photos for each month of the year.

1. Click **Calendars** on the **Make** screen and then pick 12 photos.
2. Select what month you want your calendar to begin with by using the **Start Month** menu.
3. You can select the type of calendar you would like to use from the **Calendar Style** menu.
4. You can arrange your photos on the different months by dragging and dropping them onto the months you want them to be on.
5. On the right of the screen, there is a preview of what your calendar will look like. You can scroll through the different months using the left and right facing arrows.
6. You can specify how many calendars you would like to order via the **Quantity** box. Below the **Quantity** box is the **Price** per calendar.

Once you've set the quantity that you would like to order, your subtotal will be displayed to the right of **Subtotal**.

7. Once you are satisfied with your calendar order, click **Continue** and follow the on screen instructions to complete your order.

6.6 Ordering a DVD

You can order your favorite slideshow on a professionally produced, custom DVD for an unbeatable price.

1. To order a DVD, click **Order DVD** on the Make screen and then select a show from the left side of the screen.

2. PhotoShow DVDs are available in two customized packaging styles —

Commemorative DVDs are packaged in a high quality “keep case”, just like the boxes your favorite movies come in. The cover displays a representative photo from your show, the show's title, and author or credit information. Multiple templates are available for you to choose from.

Value DVDs are shipped in a protective sleeve that displays the face of the DVD. The physical disc and its contents are identical to the commemorative discs. The only thing missing is the custom case. (Value packaging is only available for shows having fewer than 50 photos.)

3. To begin your customization process, enter your desired **Title**, **Created by**, and **Starring** into the respective fields.

4. Click **Order DVD** to continue with your order.

Your show will be transferred to the production facility, and you will be transferred to a web page where you can complete your order. Follow the on screen instructions to choose your desired packaging, double check the show's title and submit your order

6.7 Making a Video CD

Nero PhotoShow Elite makes it easy to create Video CDs featuring your photos. A **Video CD** is a disc that will playback in many DVD players, enabling you to watch your photos on your television.

1. Clicking on **Video CD** on the **Make** screen will show you your albums and asks you to select the photos you want to include on your Video CD.

2. After you've selected your photos, click **Make Video CD** to start the burning process. Try using a CD-RW or CD-R media, but be aware that some DVD players support only one type. Additionally, some DVD players may not play back home burned Video CDs at all, so make sure to check the compatibility of your DVD player with the manufacturer.

6.8 Personalize Your Desktop

Nero PhotoShow Elite lets you set any of your photos as your computer's desktop background.

1. Click **Desktop Picture** on the **Make** screen and then find the photo you want to use from your albums.
2. If you can't find the photo you want to use, click **Search** to search through your photos in **Nero PhotoShow Elite**.
3. After selecting the photo you want to use, click **Make Desktop** to set it as your computer's desktop background.

7 Making A Musical Slideshow

7.1 Making a Musical Slideshow



With **Nero PhotoShow Elite**, you can create a great looking slideshow of your favorite photos and share it online for friends and family living all around the world. To begin, just click on **Musical Slideshow** on the **Make** screen and select the photos you want to include from your current albums.

After you select the photos to include, click **Make Show** and enter the name of your new slideshow in the dialog that appears then click **Continue** to go to the slideshow screen.

7.2 Arranging Your Show

The slideshow screen displays the contents and layout of your show.

1. Rearrange the order of photos in your show by dragging them to the location you want.
2. To apply an overall style or look to the entire show, select a style name from the **Show Style** menu.
3. Place your mouse cursor over a photo and click the green triangle to watch your show starting at that photo, click **Edit** to edit the photo, click the **Curved Arrows** to rotate it, or click the red **"X"** to remove it from your show.

Making A Musical Slideshow

4. You can select multiple photos by holding down the shift key and clicking each thumbnail, or by clicking the yellow background and dragging the mouse across the photos you would like to add. Once photos are selected, you can rotate them with the pop-up **Rotation Arrows**, delete them by clicking the red "X", or move them by dragging them to a new location within your show.

5. To add additional photos to your show, click on **Add Photos** and choose to **add a single photo, multiple photos, or a folder of photos**.

6. Clicking on **Options** allows you to set many options for your show, such as the show's title. For more information on show options, visit section 5.7 of this manual.

7.3 Editing Your Show



1. Clicking **Edit Show** displays a single photo in your show for editing. Below the photo is a thumbnail browser which lets you open other photos for editing.

2. To watch your show, click **Watch Show**. To display options for sharing your show, click **Share Show**.

3. You can personalize your slideshow by changing **Transitions, Effects, Speed, and Soundtrack** settings for individual photos or for your entire slideshow.

4. To easily specify the settings for your entire show, browse to the first photo in your show and then choose the **Transition, Effect, Speed or Sountrack** setting that you would like to apply.

Note: The settings you select will be applied to your entire slideshow unless you change this setting on a later photo. To change settings on a specific photo, you must have the preview of the photo displayed on the screen. Click the arrow next to the setting you would like to change and make your selection from the drop-down menu. Your setting will be applied beginning at the photo you are currently previewing.

7.4 Adding Animated Clip Art To Your Show



1. Click the Clip Art tab to add fun animated clip art to your photos.
2. You can scroll through the clip art by clicking the **Left and Right Arrows** at the bottom of the clip art window. Or if you know which category you would like to view, you can use the **Category** menu to go directly to it.
3. Then click on the piece of clip art you would like to use and drag it to your photo. Clip art can be dragged anywhere on your photo and can be resized with the **Clip Art Zoom** slider which is located below the photo.
4. To remove a piece of clip art, click **Delete Clip Art**.
5. New clip art is made available for **Nero PhotoShow Elite** all the time. You can get more clip art to use in your slideshows by selecting **Get More Clip Art** from the bottom of the clip art category drop-down menu. Selecting this option will open a web browser to a site where you can order additional theme packs for any occasion.

Nero PhotoShow Elite allows you to modify the photos in a show by adjusting the brightness, rotating, cropping, and adding text. None of these changes will permanently affect your photos because they will only be reflected in your slideshow. When you remove a photo

Making A Musical Slideshow

from your slideshow, it will not be deleted from your hard drive.

6. Click the **Modify** tab to display the modify options window.

7.5 Adding Captions and Speech Bubbles

1. Click the **Captions** tab to add captions and speech bubbles to your photos.
2. You can drag the caption you like to any place on your photo and then type your text into the caption.
3. To reposition your caption, click the caption and then click and drag the handle to reposition it.
4. Change the size of your caption by clicking and dragging the **Caption Zoom** slider beneath your photo.
5. Remove a caption by clicking **Delete Caption**.

7.6 Modifying Photos In A Show

7.6.1 Brightness

To adjust the brightness of a photo, use the slider on the **brightness** tool to get the desired level. Double clicking the brightness tool will adjust the brightness back to the original state of the photo.

7.6.2 Rotate

Click the **Right** and **Left Arrow** buttons to rotate your photos.

7.6.3 Crop

To crop a photo, click the **Crop** button and adjust the size of the crop area by dragging on one of the corners. You can click and grab the cropped area and move it around to other sections of the photo you would like to crop. Click **Save Crop** when you are satisfied with the crop. Click **Cancel Crop** to return your photo to its original state. **Note:** This does not affect your original photo; the change only appears on the photo used in your slideshow.



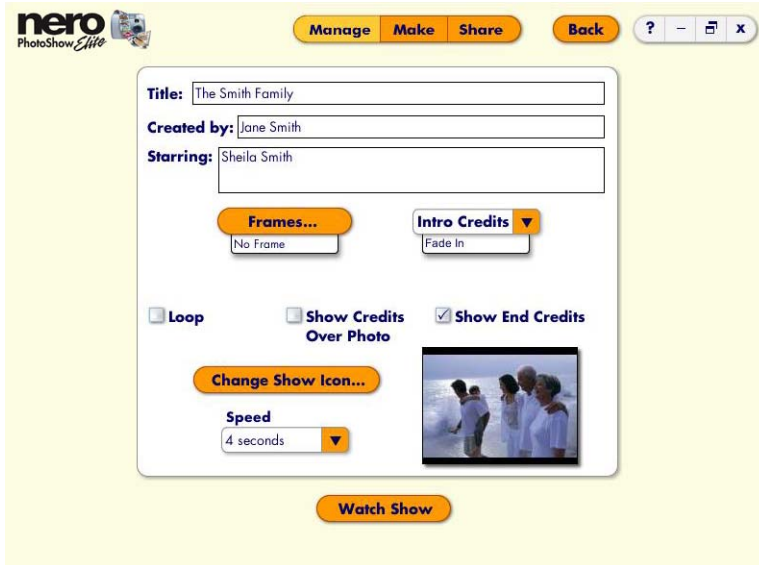
7.6.4 Add Text

To add text to a photo, simply click the Add Text button and then type in your desired text. You can choose where the text is displayed by using the Align menu to move it to the left, center, or right. You can also reposition the text vertically by dragging the up-and-down arrow located in the top right corner of the text bar.

7.6.5 Remove from Show

To remove a photo from your show, click the **Remove from show** icon. When you remove a photo from your show, the photo will not be deleted from your hard drive.

7.7 Show Options



This screen displays options you can change for your show. Click **Options** to display this screen.

7.7.1 Title

The default title for your slideshow is the name of the folder you select when you create a new show. You can rename your slideshow by typing in the **Title** field at the top of the **Show Options** screen.

7.7.2 Created By and Starring

Type the name(s) you would like displayed in the **Created By and Starring** fields and **Nero PhotoShow Elite** will display credits at the beginning and end of your slideshow.

7.7.3 Frames

With **Nero PhotoShow Elite**, you can add a themed frame to all the photos in your slideshow. There are plenty of frames included, but you can also create your own custom frames using any photo from your computer. For best results with custom frames, be sure to select a photo that has a resolution of at least 800x600 pixels.

7.7.4 Intro Credits

Select any style for your opening credits from the **Intro Credits** section.

7.7.5 Loop Show

To have a slideshow replay continuously until the viewer decides to end it, place a checkmark in the **Loop Show** box.

7.7.6 Show Credits Over Photo

By default, credits are displayed on a black background before your show begins. To show credits over the top of the first photo in your show, place a checkmark in the **Show Credits Over Photo** box.

7.7.7 Show End Credits

To show credits at the end of your show, place a checkmark in the **Show End Credits** box.

7.7.8 Change Show Icon

Nero PhotoShow Elite uses the first photo imported into your slideshow as the icon that represents it. To change this icon, click **Change Show Icon** and choose a photo from your hard drive that you would like to use as the slideshow's icon.

7.7.9 Speed

To set the default speed for your slideshow, select time duration from the **Speed** drop-down menu. The time duration you select will be how long each photo is displayed while you watch your show.

7.8 Choosing a Soundtrack



Nero PhotoShow Elite has over 100 songs that you can use as the **Soundtrack** for your slideshow. These songs have been licensed so you can share your slideshow online with music that adds emotion and creativity.

Songs are grouped by genre. The first column lists **Genre** categories and the second column lists **Songs** for the currently selected genre.

1. Click on a **Genre** category to change genres.
2. Click on a **Song** name to hear a short preview of the song and to select that song for your show.
3. If you would like no music in your show, click **No Music** to clear your selected song.
4. You can use multiple songs throughout the slideshow by selecting another song from the **Edit Show** screen. However, using multiple songs will increase the download time of the slideshow you are sharing online.

7.8.1 Using Your Own Music

To use your own music in **Nero PhotoShow Elite**, you will need to have the song in MP3 format.

Note: Shows featuring custom musical content are not eligible for the free sharing service, so you will need to host them through an alternate service. Also, you will not be able to share slideshows using your own MP3 files unless you own all applicable rights to the MP3.

If you do own all applicable rights, then you can publish your show to your own website using the **HTML** option on the **Share** screen. The inclusion of your own MP3 files can significantly increase the access time for the shows you post on your website.

7.8.2 Editing Your Own Music

When using your own MP3, you can set the starting and ending points of the song by clicking **Edit Song**. This button appears above the **No Music** button when you have an MP3 selected. When your song reaches the end point, it will loop and start playing from the beginning.

1. To adjust the starting and ending points, drag the green and red sliders to the desired points in your song. When you release the slider, you will hear the song play from that point on.
2. If you want to fine tune the song, click the left or right arrow above the slider to reduce or advance the slider in small increments.
3. To hear your edited song, click **Preview**.
4. To return to the **Soundtrack** screen, click **Done**.
5. To watch your slideshow, click **Watch Show**.

7.9 Watching a Show and Using the Navigation Screen

If you move your mouse while watching a slideshow, a navigation screen will appear in the bottom center of the screen.

1. The orange buttons on the navigation screen allow you to control the slideshow and navigate to key places within **Nero PhotoShow Elite**.
2. The **Back** and **Forward** arrows allow you to go back to the previous photo or move forward to the next. The **Pause** button will pause the slideshow.
3. Click **Edit** to return to the edit screen.

Making A Musical Slideshow

4. By clicking **Share**, you can share your slideshows with family and friends by sending an e-mail link, burning it to a CD-ROM, making a screen saver, or publishing to HTML.

5. The **Back** button will take you back to the previous screen.

7.10 Show Tips and Tricks

7.10.1 Planning Your Show

Before making your slideshow, you should determine who the audience of the show will be and what the purpose is for making the show. If you are trying to re-tell a story or an event, be sure to include photos of key moments such as the beginning, middle, and end of the story, so it will better illustrate the sequence of events as they happened.

Decide what kinds of emotions you are trying to convey in the slideshow and choose your soundtrack accordingly. You may want to use multiple songs to emphasize a change in mood.

Changing transitions or effects when you make a change in the soundtrack can have a dramatic impact on your slideshow. If you plan to share your slideshow with people online, be careful not to use too many songs or photos because the file size will increase.

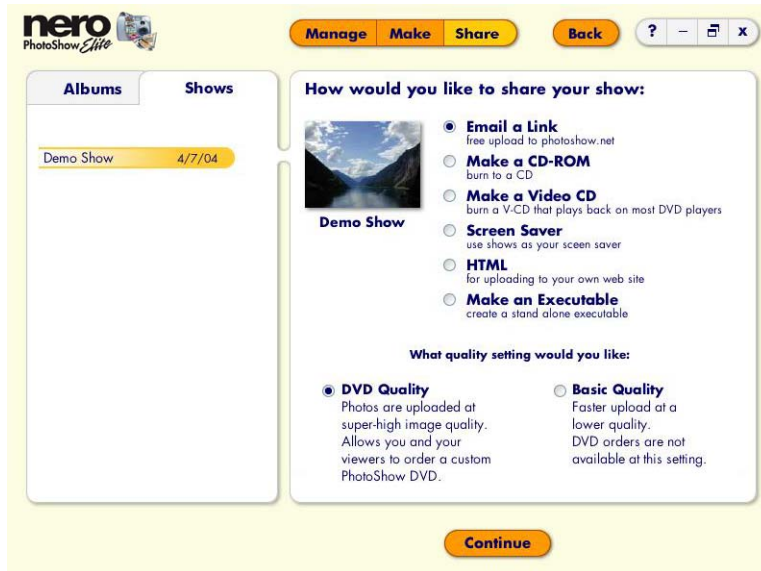
Placing multiple pieces of animated clip art on a single photo and playing with the clip art zoom can create a variety of layers for depth and dimension.

To put special emphasis on a given photo, change the transition time to a longer duration. This technique can be especially beneficial for photos where you are using text or captions, so the audience has time to read.

7.10.2 Performance Tip

Changing the settings on your graphics card and monitor from 32 bit depth to 16 bit depth will increase performance. On a PC you can do this by right clicking on your desktop and selecting Properties. Click on the Settings tab located on the top right and then choose "Medium 16 bit" which is in the "Color quality" drop-down menu.

8 Sharing Your Photos



8.1 Sharing Your Photos

The **Share** screen lets you easily share your photos, albums, and slideshows with friends and family.

You can share your album on your own website by publishing it to HTML, burn photos to a CD-ROM or Video CD, or watch your photos on your TV.

8.2 Email a Link To Your Show

You can upload your show to photoshow.net and send your friends and family a personalized email with a link to view your show.

When sharing online, you have the option of two quality settings:

DVD quality uploads a higher quality photo that looks better and will enable the recipient(s) of your email to order a DVD of your show.

Basic quality uploads a lower quality photo that allows the recipient(s) of your email to see your show more quickly. If you are sharing your show with people on a slow internet connection, such as a 56k modem, you may want to use the Basic quality.

Sharing Your Photos

***Please Note:** Email addresses entered into this field are kept in absolute confidence and will not be stored for future marketing purposes. We value your privacy as well as the privacy of your loved ones.

8.3 Upload An Album To A Photo Community

Upload your album to an online photo community such as Shutterfly or Snapfish. You must have an account with one of these services to take advantage of this feature.

8.4 Make A CD-ROM

Nero PhotoShow Elite enables you to burn shows to a CD-R or CD-RW, which is a great way to archive your photos and slideshows. Share them with your family and friends without using the internet and allow them to make their own prints. You also have the option of creating a high resolution archive of all your photos in the show to use as backup.

1. To begin the burn process, you will be prompted to enter a name for your CD. The **CD Name** is the name that will be displayed when you insert the CD-ROM in your computer.
2. You can include a slideshow on your CD-ROM by checking **Include Slideshow**.
3. If you do not want to include an HTML browsing interface, uncheck the **Include HTML Browsing Interface**. With this option unchecked, the CD-ROM will only include the photos in your album.
4. If you check the **Include HTML Browsing Interface**, you'll see layout options for the CD-ROM's interface.
5. The **Photo Size** menu sets the pixel dimension of the photos on your CD-ROM.
6. The **Page Layout** menu sets the style of the CD-ROM's interface. You can see a preview of the layout to the right of the page layout menu.
7. Be able to change and choose the page and text color by clicking on **Change**.
8. When you are ready to burn your CD-ROM, click **Publish** to start the burning process.

8.5 Make a Video CD

Nero PhotoShow Elite makes it easy to make Video CDs of your slideshows.

1. Click **Share** to access the **Make a Video CD** option.

When burning your Video CD, try using both CD-RW and CD-R media because some DVD players support only one type. Also, some DVD players may not play back home burned Video CDs at all, so make sure you check the compatibility of your DVD player with its manufacturer.

2. You can add music to your Video CD by clicking **Choose** and browsing to an MP3 format music file that you want to include as the soundtrack to your Video CD.
3. If you decide not to have music on your Video CD, click **No Audio** to remove the MP3 music file.
4. Click **Share** to start burning your Video CD. Try using a CD-RW or CD-R media, but be aware that some DVD players support only one type.

8.6 Screen Saver

This allows you to set a slideshow as your screen saver. You can use one slideshow as your screen saver, or you have the option of cycling through all your published slide show screen savers.

8.7 HTML

With **Nero PhotoShow Elite**, it's easy to publish your photos to HTML for inclusion on your personal web site. Publishing your show to HTML creates a folder containing your slideshow, so you can upload it to your hosting provider. To take advantage of this feature, you will need both a web host and FTP software. Please note that we do not offer direct support on third party services and software.

1. After clicking **Share**, you have a variety of options for customizing the layout of your page:
2. The **Title** is the text that will appear at the top of your web page.
3. The **Photo Size** menu sets the pixel dimension of the photos on your web page.

Sharing Your Photos

4. The **Page Layout** menu sets the style of the web page. You can see a preview of the layout to the right of the page layout menu.

5. Change and choose the page and text color by clicking on **Change**.

You have the option of exporting your photos in four quality settings. The higher quality settings will take longer for people to view online.


You can also include a link to a slideshow from your published web page.

8.8 Make an Executable

Create a folder that contains an executable that will play back your slideshow in full screen mode without the need of **Nero PhotoShow Elite**. This file can be burned to a CD and viewed on multiple computers.

9 Helpful Hints

9.1 Searching For Photos

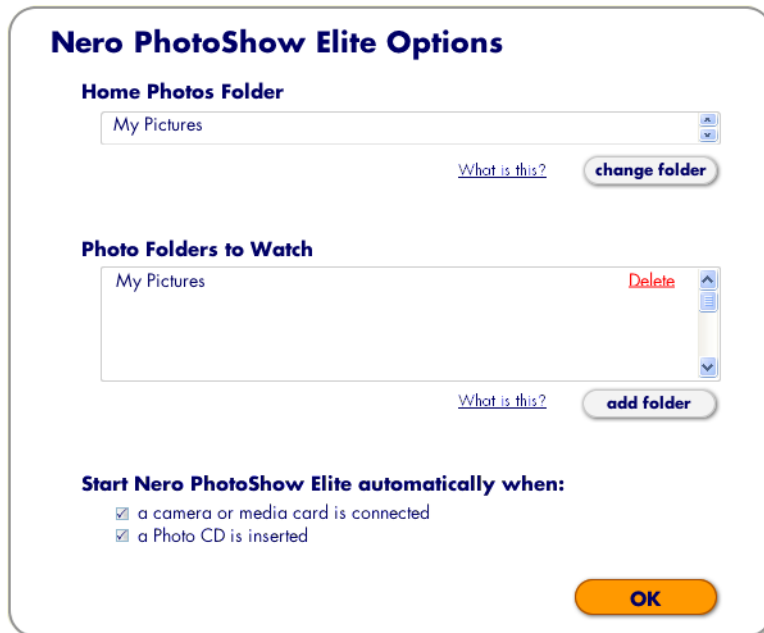


The screenshot shows the 'Advanced Search' tab of a search interface. It features a 'Search For:' section with radio buttons for 'Photos' (selected) and 'Albums'. Below this is a 'Keyword:' text input field. A 'Search Under:' section contains three checked checkboxes: 'Title', 'Starring', and 'Comments'. There is a 'Group' dropdown menu currently set to 'All'. A 'Rating:' section shows five circular icons, with the first two filled, and a note '(Search for items with this rating or higher.)'. The 'Dated after:' section has two dropdowns for 'January' and '1990'. The 'Dated before:' section has two dropdowns for 'April' and '2004'. At the bottom are two orange buttons labeled 'Search' and 'Cancel'.

The **Search** screen allows you to find albums and/or photos by using a keyword search. A match is determined by the description entered into the album and photo info section under the **Starring** field and **Keywords & Comments** field.

1. To use the **Simple Search**, type your keyword into the **Keyword** field and choose whether you want to search for **Photos** or **Albums**. Then click **Search** to begin looking.
2. The **Advanced** tab gives you more criteria to use in your search. You can specify whether you want to search through the title text, starring text, or comments text. You can also specify a range of dates to search through, or restrict your search to look in specific groups.

9.2 Options



The **Options** screen is where you can set options for how **Nero PhotoShow Elite** operates.

Home Photos Folder is where your photos are stored on your computer. It is the same place **Nero PhotoShow Elite** stores your photos when you import them from your digital camera or hard drive. To change this location to a different location on your computer, press **Change Folder** and browse to the folder you would like to use.

If you add or remove photos from your **Watch Folder**, these photos will also be added or removed from **Nero PhotoShow Elite**. To add more folders to watch, click **Add** and browse to the folder you would like to add.

9.3 Tips and Tricks

While in the **Manage** screen, you can right click on an album icon or photo thumbnail to see a menu with options pertaining to that album or photo. You can also right click on an album name in the list on the left to open the menu pertaining to that album while you have a different album open.

While in the **Manage** screen, hold down the control key labeled "ctrl" on most keyboards and you can drag the photos to copy them to a different album instead of moving them. To do this, open an album and select the photos you want to copy to a different album. Then hold down the control key while dragging the photos to a different album name in the list on the left. This will duplicate the photos in the other album. If you don't hold down the control key, the selected photos would be moved not copied to the other album.

You can also cut and paste your photos as a way of moving them between albums. To do this, select some photo thumbnails and then hold down the control key while pressing the "**X**" key. This will 'cut' your selected photos which will remove them from their current album and temporarily store them in your computer's memory.

Next, open the album where you want to move your photos and hold down the control key while pressing the "**V**" key. You should see your selected photos appear in the open album. 'Paste' your selected photos from your computer's memory to the new album.

If you want to easily select the first ten photos in your album, click on the first photo in your album and then hold down the **shift** key while you click on the tenth photo. This will cause all the photos between the two photos as well as the first one and the last one to become selected.

If you want to select photos in your album that are not beside each other, you can hold down the **control** key while clicking each picture thumbnail. If at any time you want to unselect all your selected photos, you can click in the white space beside a photo to do this.

If you hold down the **shift** key while you resize the crop selection, the crop rectangle will maintain in its original aspect ratio.

If you are using high resolution photos, such as ones from a 2 mega pixel camera or higher, keep the aspect ratio the same and it will allow you to zoom in on the portion of the photo that you've cropped, while keeping the photo the same size.

9.4 Technical Support Contact

Nero PhotoShow Elite is a product of Ahead Software



Ahead Software AG
Im Stoeckmaedle 18
76307 KARLSBAD
GERMANY

Website: <http://www.nerophotoshow.com>

You will find detailed technical support information on our website at www.nerophotoshow.com under the Support section. Here you will find FAQs and User Manuals conveniently available to answer your questions.

FREE Email Support:

Technical Support

(German, Spanish,
English, French)

techsupport@nerophotoshow.com

German Sales Department

orders, order status,
inquiries, serial number requests

sales@nerophotoshow.com

(Please expect 3 to 8 working days response time for all email requests. Emails are handled in the order received)

New Support-Hotlines: These hotlines are available Monday to Friday from 9.00 am to 10.00 pm, and on Saturday from 12:00 pm to 6:00 pm. European Standard Time

Great Britain*	0905 7890135	0,80 Pounds per minute
Netherlands	0900 - 20 70 707	0,80 Euro per minute
Belgium ***	0903 - 99 327	1,12 Euro per minute
Spain **	80 75 055 61	0,94 Euro per minute
Italy **	899 - 111 004	1,29 Euro per minute

*** The British hotline is available Monday to Friday from 8.00 am to 9.00 pm Greenwich Time and on Saturday from 11.00 am to 5.00 pm ** The Spanish & Italian hotlines are available Monday to Friday from 9.00 to 6.00 pm CET *** The Belgium hotline only provides Dutch & English after 6 pm and on Saturdays. Sorry no support in French available after hours and on Saturday.**

Legal Disclaimer:

This hotline is managed on behalf of Ahead AG. It is at your own expense.
When you call and all lines are busy, you can decide to remain on the line or hang up and try again later.

Fax Headquarter in Germany: +49 7248 911 888
(where "+" is the prefix you use for international calls)

Copyright © 2004 Ahead Software. All rights reserved.