



# NESPRESSO<sup>®</sup>

## ESSENZA



### C90

## Instruction Manual



Please read this Instruction Manual and the safety instructions on pages 1 and 2 before operating the appliance!



## IMPORTANT SAFEGUARDS

When using electrical appliances, basic safety precautions should always be followed, including the following:

- Read all instructions carefully.
- In case of emergency, immediately remove plug from power outlet.
- Do not touch hot surfaces. Use levers or knobs.
- To protect against fire, electric shock and personal injury, do not immerse cord, plug or appliance in water or other liquid. Never clean the appliance or the power cord if those are humid.  
Avoid touching the machine with wet hands.
- Close supervision is required when any appliance is used by or near children.
- Unplug appliance from outlet if leaving for an extended period of time (vacation, etc).
- Allow to cool before adding or removing parts, and before cleaning the appliance.
- Do not operate any appliance with a damaged cord or plug or after the appliance malfunctions, or has been damaged in any manner. Return appliance to the nearest authorized service facility for examination repair or adjustment.
- The use of accessory attachments not recommended by the appliance manufacturer may result in fire, electric shock or personal injury.
- Always attach plug to appliance first, then plug cord into the wall outlet. To disconnect, turn off appliance, then remove plug from wall outlet.
- Do not use appliance for other than intended purposes.
- Do not put fingers inside capsule housing, due to sharp edges.



## POWER CORD INSTRUCTIONS

Regarding your power cord:

- a) A short power cord (and detachable power cord) is provided to reduce risks that may result from longer and tangled cords.
- b) Longer detachable power cords or extension cords are available and may be used if proper care is used.
- c) If a long detachable power-supply cord or extension cord is used (1) the marked electrical rating of the detachable power-supply cord or extension cord should be at least as great as the electrical rating of the appliance, (2) If the appliance is of the grounded type 3-wire cord (3) the longer cord should be arranged so that it will not drape over the counter top or table top where it can be pulled on by children or tripped over.



## CAUTION

Household use only. Do not use outdoors. To reduce the risk of fire or electric shock, any servicing other than cleaning and user maintenance should be performed by an authorized service representative. Under no circumstances should you open the machine yourself.

- Check voltage to be sure that the voltage indicated on the name plate corresponds with your voltage.
- Never use warm or hot water to fill the water container. Use cold water only!
- Keep your hands and the cord away from hot parts of the appliance during operation.
- Never clean with scouring powders or sharp tools.



## SAFETY INSTRUCTIONS

Read these instructions carefully before using your *Nespresso* machine.

- Do not plug the machine into anything other than a grounded electrical socket. Verify that the voltage indicated on the technical specifications plate on the bottom of the unit corresponds to your electrical installation. The use of incorrect connection voids warranty.
- Do not place your *Nespresso* machine on a hot surface (electrical heating plate for example) or near a flame.
- Do not lift the closing lever while the machine is functioning since coffee is extracted under high pressure.
- Do not use the machine without the drip tray and drip grid in place.
- Ensure that the electrical cord does not hang over edge of table or counter. Do not disconnect the electrical plug by pulling on the cord.
- Avoid touching the electrical cord as well as any other part which may become hot during the use of the machine.
- For descaling, adhere to the directions which follow:
  - a) Preparation: please read carefully the safety instructions on the descaling packaging.
  - c) Descaling: do not open the closing handle during the descaling process.
  - d) Rinse: rinse the water tank and clean the machine to avoid any residual descaling agent.
- Waste disposal: Unplug the machine. Cut off power cord near the housing. Dispose machine and cable at your public disposal or customer service.

## Save these Instructions



# 8 Troubleshooting

a



No light indicator



Check mains: plug, voltage, fuse. In case of failure, call the *Nespresso Club*.

b

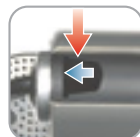
No coffee,  
no water

● Water tank empty → Fill tank

● Venting



1. Open + 2. hold lever in position



Water comes



close



Stop

● Descale, if necessary → refer to point 7

c

Coffee is not hot enough



Preheat cup, descale if necessary

d

Capsule area is leaking  
(water in capsule container)



Position capsule correctly.  
In case of leakage: call the *Nespresso Club*

e



Irregular interval blinking



Send machine to repair or call the *Nespresso Club*



## Specifications



..... 110 - 120 V, 60 Hz, max. 1260 W



..... max. 19 bar



..... ~ 6.6 lbs



..... 34 oz



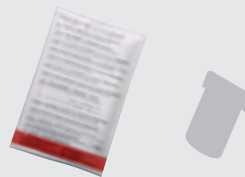
..... 41°F ... 113°F



..... 6.5 in 9.9 in 11.4 in



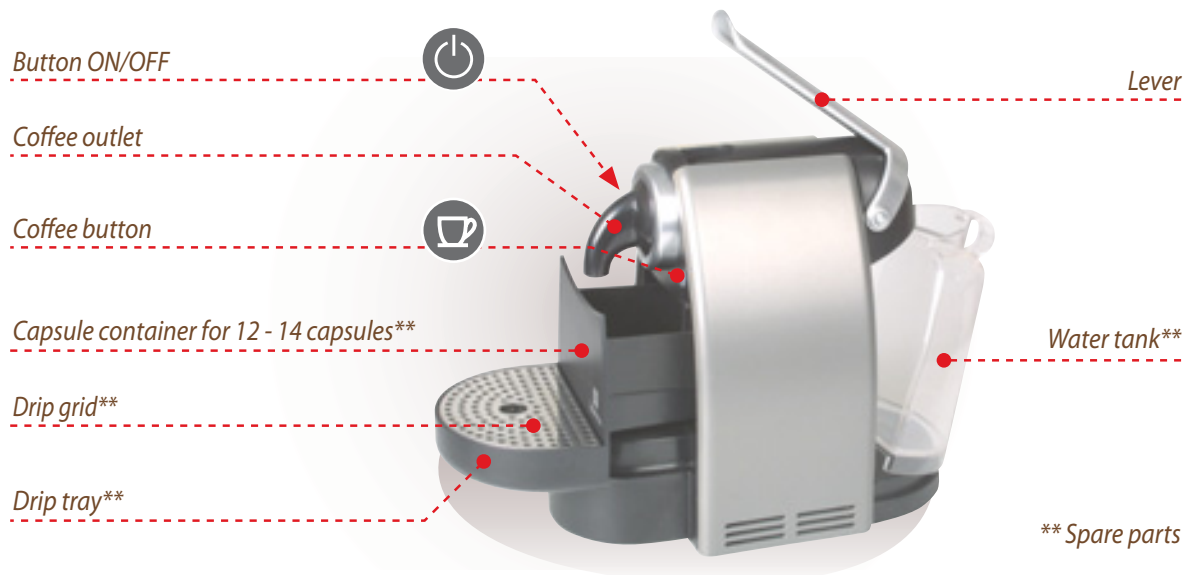
## Optional Accessory



Nespresso descaling kit

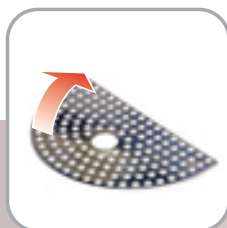


C90\_Z1\_01.06



# 1

## Initial set-up or after a longer period of non-use



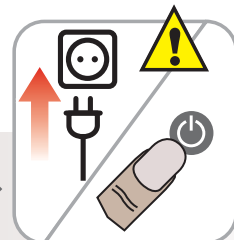
Remove protective film



Fill water tank



Place a container



Plug machine in.  
Turn machine on



Heating up



Ready



1 min



Let water run through

No water



see:

8b

# 2

## Daily: before brewing your first cup



Fill water tank with  
fresh water



Press the ON switch



Heating up



READY

# 3



## Espresso

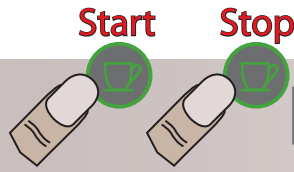


## Lungo

### Preparation



Preheat espresso cup: run 1 cup of water through



Insert capsule



OK



Flow speed depends on coffee variety



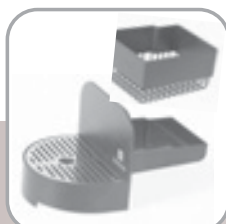
Eject capsule (drops into capsule container)

# 4

### Daily: After the last coffee



Press the OFF switch



Empty capsule container + drip tray

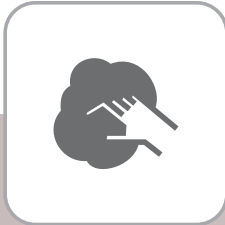


Rinse and empty water tank



# 5

## Clean: When necessary



~~abrasive~~

~~solvent containing~~

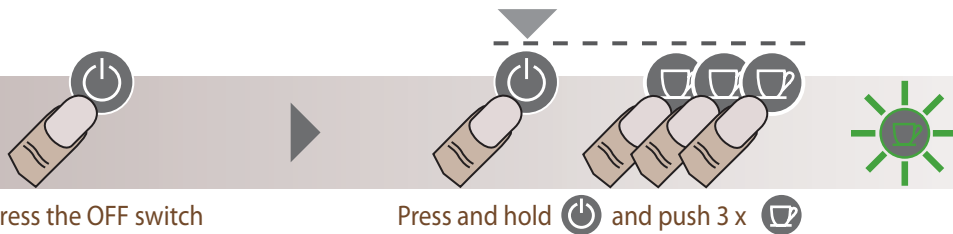
~~dish washer~~



Damped cloth, mild cleaning agent

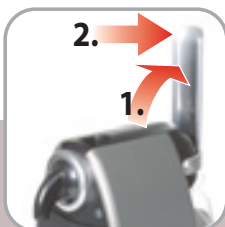
# 6

## Empty the system: After long period of non-use, for frost protection and after repair



Press the OFF switch

Press and hold and push 3 x



(1.) Open  
and (2.) hold



Close

Machine switches off automati-  
cally and is **blocked for 10 min**



# 7 Descaling



Carefully read safety instructions on descaling package.  
Descaling solution can damage machine casing.  
Avoid using vinegar as it can damage your machine.

Water hardness

Descal after

fH	dH	
36	20	300
18	10	600
0	0	1200

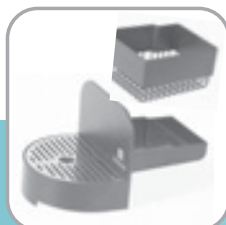


## Preparation

a



Eject capsule



Empty drip tray and capsule container



Rinse machine, see step 1



If leakage, refers to:

8d

b



Fill in descaling kit solution and two cups of water



Place a recipient



1. Lift lever, 2. insert filter, 3. close lever

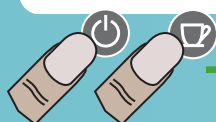
OFF



## Descaling

Avoid using vinegar as it can damage your machine

c



Press both buttons simultaneously for 3 seconds

Start



Let descaling solution run through twice

90 sec

Stop



Refill water tank once more with descaling solution and repeat step

## Rinse

d



Remove filter



Empty, rinse and fill water tank



Rinse machine, see 1



Exit: press both buttons simultaneously for 3 secs