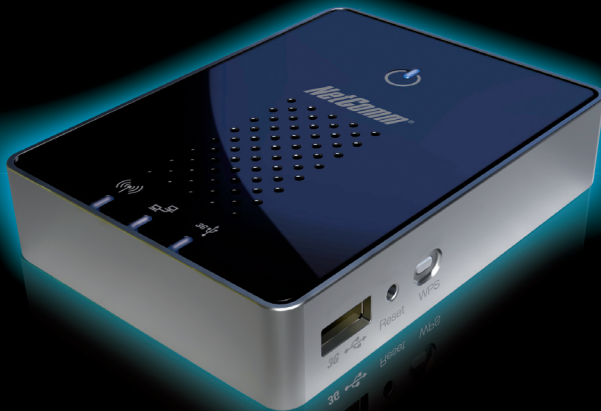



# *NetComm*® NETCOMM LIBERTY SERIES 3G Travel Router

NetComm 3G Travel Router tl 3GT1Wn



# 1

## Hardware Installation

1. Gently **insert** the supplied battery into the battery compartment on the back of the 3G Router.
2. Connect the supplied power adapter to a wall power outlet and to the micro USB port of the 3G Router to charge the battery. The battery is fully charged when the Power LED  lights up **Solid Green**.
3. Switch the 3G Router **on** and wait around **2 minutes** to allow the device to power up.

# 2 Connecting your device

You can use the 3G Router to create a Wireless Local Area Network (WLAN) to provide Internet access to wireless-enabled devices.

## **Using the 3G Router with a 3G Mobile Broadband Internet Service**

- Connect a compatible 3G USB Modem to the **3G USB port** of the 3G Router.
- The 3G Router will automatically attempt to detect the connection details from the SIM card of your 3G USB modem. Simply wait for **2 minutes** to allow the 3G Router to apply the settings.

- If the 3G APN<sup>1</sup> connection details were successfully detected, you will now be able to access the **Internet**.

Note: Please refer to the 'Setting up your 3G Router' section in the user guide (on the CD) if you have any problems connecting to the Internet, or if:

- Your SIM card requires a **PIN code**
- Your 3G broadband Internet service provider requires you to input the **username/password** for your 3G connection
- You wish to use other alternate 3G connection details (such as a special APN<sup>1</sup>)

<sup>1</sup> APN stands for Access Point Name

# 3 Establishing Wireless Connection

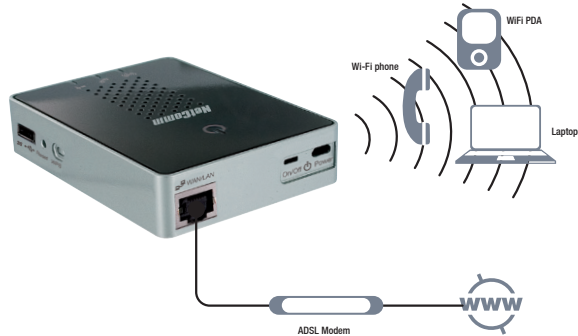


1. Using your wireless-enabled device, scan the wireless networks in your area and select the network called **NetComm Wireless**, then click **connect**.
2. Enter the following default security key: **a1b2c3d4e5**

Note: For optimal wireless security, we recommend that you change the default settings through the web interface. For more details, please consult the User Guide located on the supplied on the CD.

# 4

## Establishing a WAN connection



### Using the 3G Router with a fixed line Broadband Internet Service (DSL/Cable)

- Connect your DSL or cable modem with the supplied **Ethernet cable** to the WAN/LAN port of your 3G Router.
- On your computer open a web-browser (such as Internet Explorer, Firefox, or Safari) and type in **192.168.20.1** into the address bar.
- At the login screen type **admin** into both the **username** and **password** fields. Then click **submit**.
- Move your mouse over Internet Settings and click on **WAN**.
- Select your WAN connection type from the drop box.

The screenshot shows the NetComm 3G1Wn-3G 1-Port 11n Wi-Fi Router web interface. The header includes the NetComm logo and the model name. A navigation menu at the top lists: Status, Internet Settings, Wireless Settings, Firewall Settings, and Administration. The main content area is titled "Internet Settings > WAN". Below this is a section for "Wide Area Network (WAN) Settings" with a descriptive paragraph. The configuration fields are: WAN Connection Type (set to DHCP (Auto config)), DHCP Mode (empty), Hostname (optional) (empty), MAC Clone (set to Disable), and Enabled (checked). There are "Apply" and "Cancel" buttons at the bottom of the DHCP Mode section. A second section, "WAN Failover Backup", has "Automatic 3G Backup" set to "Disable" with "Apply" and "Cancel" buttons below it.

- Enter the relevant information in this screen as supplied by your ISP
- Click on **Apply** to save the settings
- Wait **2 minutes** for the 3G Router to apply the settings
- The Internet connection status can be determined by clicking on **status** from the menu after logging in to the 3G Router.

# 5

## Establishing a LAN connection

You can establish a LAN connection to your 3G Router using the WAN/LAN port by following these three basic steps.

1. With the device turned on, simply press the **reset** button on the side of the 3G Router quickly for less than **2 seconds** and release.
2. With the supplied **Ethernet cable**, connect your computer to WAN/LAN port of the 3G Router.
3. Wait for **2 minutes** to allow the 3G Router's DHCP server to assign an IP address.




# 6 Charging your battery

## Charging your battery

If you use the 3G Router until the battery has completely drained, it will power off. If this occurs, let the unit charge overnight.

Note: The battery must be fully charged before using your 3G Router for the first time.

To charge your battery please complete the following steps:

1. With the battery inserted into your 3G Router **connect** the supplied power adapter to the **wall power outlet** and to the **micro USB socket** on the 3G Router.
2. Leave it to charge until the **power LED**  lights up **solid Green**.

7

# NetComm Velocity Series

Accessories for your product



- NP910n Wireless N 150, this product is perfect for users wishing to extend their network with the convenience of a miniature USB Adapter
- NP900n Wireless N 150, this product is perfect for home users
- NP901n Wireless N 300, perfect for data intensive applications within a SoHo environment. The included USB dock gives you the ability to move the USB Adapter so you always receive the best possible wireless signal
- NP902n Wireless N 300, perfect for SoHo, business users and gamers. The NP902n features a cable to allow you to position the adapter, a removable hook to neatly attach to the rear of your monitor and 2 detachable external antennas ensuring you receive the best possible wireless signal at all times.

\* Maximum wireless signal rate and coverage values are derived from IEEE Standard 802.11g and 802.11n Draft 2.0 specifications. Actual wireless speed and coverage are dependent on network and environmental conditions included but not limited to volume of network traffic, building materials and construction/layout.

## **FCC statement in User's Manual (for class B)**

### **"Federal Communications Commission (FCC) Statement**

This Equipment has been tested and found to comply with the limits for a class B digital device, pursuant to Part 15 of the FCC rules. These limits are designed to provide reasonable protection against harmful interference in a residential installation. This equipment generates, uses and can radiate radio frequency energy and, if not installed and used in accordance with the instructions, may cause harmful interference to radio communications. However, there is no guarantee that interference will not occur in a particular installation. If this equipment does cause harmful interference to radio or television reception, which can be determined by turning the equipment off and on, the user is encouraged to try to correct the interference by one or more of the following measures:

- Reorient or relocate the receiving antenna.
- Increase the separation between the equipment and receiver.
- Connect the equipment into an outlet on a circuit different from that to which the receiver is connected.
- Consult the dealer or an experienced radio/TV technician for help.

### FCC Caution:

1. The device complies with Part 15 of the FCC rules. Operation is subject to the following two conditions:
  - (1) This device may not cause harmful interference, and
  - (2) this device must accept any interference received, including interference that may cause undesired operation.
  
2. This device and its antenna(s) must not be co-located or operating in conjunction with any other antenna or transmitter.
  
3. Changes or modifications to this unit not expressly approved by the party responsible for compliance could void the user authority to operate the equipment.

### **IMPORTANT NOTE:**

#### **FCC Radiation Exposure Statement:**

**This equipment complies with FCC radiation exposure limits set forth for an uncontrolled environment. This equipment should be installed and operated with minimum distance 20cm between the radiator & your body.**