

Router Setup Manual

NETGEAR

NETGEAR, Inc.
4500 Great America Parkway
Santa Clara, CA 95054 USA

2006-01-17

© 2006 by NETGEAR, Inc. All rights reserved.

Trademarks

NETGEAR is a trademark of Netgear, Inc.

Microsoft, Windows, and Windows NT are registered trademarks of Microsoft Corporation.

Other brand and product names are registered trademarks or trademarks of their respective holders.

Statement of Conditions

In the interest of improving internal design, operational function, and/or reliability, NETGEAR reserves the right to make changes to the products described in this document without notice.

NETGEAR does not assume any liability that may occur due to the use or application of the product(s) or circuit layout(s) described herein.

Federal Communications Commission (FCC) Compliance Notice: Radio Frequency Notice

This equipment has been tested and found to comply with the limits for a Class B digital device, pursuant to part 15 of the FCC Rules. These limits are designed to provide reasonable protection against harmful interference in a residential installation. This equipment generates, uses, and can radiate radio frequency energy and, if not installed and used in accordance with the instructions, may cause harmful interference to radio communications. However, there is no guarantee that interference will not occur in a particular installation. If this equipment does cause harmful interference to radio or television reception, which can be determined by turning the equipment off and on, the user is encouraged to try to correct the interference by one or more of the following measures:

- Reorient or relocate the receiving antenna.
- Increase the separation between the equipment and receiver.
- Connect the equipment into an outlet on a circuit different from that to which the receiver is connected.
- Consult the dealer or an experienced radio/TV technician for help.

EN 55 022 Declaration of Conformance

This is to certify that the 54 Mbps Wireless Router WGR614 v7 is shielded against the generation of radio interference in accordance with the application of Council Directive 89/336/EEC, Article 4a. Conformity is declared by the application of EN 55 022 Class B (CISPR 22).

Bestätigung des Herstellers/Importeurs

Es wird hiermit bestätigt, daß das 54 Mbps Wireless Router WGR614 v7 gemäß der im BMPT-AmtsblVfg 243/1991 und Vfg 46/1992 aufgeführten Bestimmungen entstört ist. Das vorschriftsmäßige Betreiben einiger Geräte (z.B. Testsender) kann jedoch gewissen Beschränkungen unterliegen. Lesen Sie dazu bitte die Anmerkungen in der Betriebsanleitung.

Das Bundesamt für Zulassungen in der Telekommunikation wurde davon unterrichtet, daß dieses Gerät auf den Markt gebracht wurde und es ist berechtigt, die Serie auf die Erfüllung der Vorschriften hin zu überprüfen.

Certificate of the Manufacturer/Importer

It is hereby certified that the 54 Mbps Wireless Router WGR614 v7 has been suppressed in accordance with the conditions set out in the BMPT-AmtsblVfg 243/1991 and Vfg 46/1992. The operation of some equipment (for example, test transmitters) in accordance with the regulations may, however, be subject to certain restrictions. Please refer to the notes in the operating instructions.

Federal Office for Telecommunications Approvals has been notified of the placing of this equipment on the market and has been granted the right to test the series for compliance with the regulations.

Voluntary Control Council for Interference (VCCI) Statement

This equipment is in the second category (information equipment to be used in a residential area or an adjacent area thereto) and conforms to the standards set by the Voluntary Control Council for Interference by Data Processing Equipment and Electronic Office Machines aimed at preventing radio interference in such residential areas.

When used near a radio or TV receiver, it may become the cause of radio interference.

Read instructions for correct handling.

Customer Support

Refer to the Support Information Card that shipped with your 54 Mbps Wireless Router WGR614 v7.

World Wide Web

NETGEAR maintains a World Wide Web home page that you can access at the universal resource locator (URL) <http://www.netgear.com>. A direct connection to the Internet and a Web browser such as Internet Explorer or Netscape are required.

Product and Publication Details

Model Number:	WGR614 v7
Publication Date:	January 2006
Product Family:	router
Product Name:	54 Mbps Wireless Router WGR614 v7
Home or Business Product:	Home
Language:	English

Federal Communication Commission Interference Statement

This equipment has been tested and found to comply with the limits for a Class B digital device, pursuant to Part 15 of the FCC Rules. These limits are designed to provide reasonable protection against harmful interference in a residential installation. This equipment generates, uses and can radiate radio frequency energy and, if not installed and used in accordance with the instructions, may cause harmful interference to radio communications. However, there is no guarantee that interference will not occur in a particular installation. If this equipment does cause harmful interference to radio or television reception, which can be determined by turning the equipment off and on, the user is encouraged to try to correct the interference by one of the following measures:

- Reorient or relocate the receiving antenna.
- Increase the separation between the equipment and receiver.
- Connect the equipment into an outlet on a circuit different from that to which the receiver is connected.
- Consult the dealer or an experienced radio/TV technician for help.

This device complies with Part 15 of the FCC Rules. Operation is subject to the following two conditions: (1) This device may not cause harmful interference, and (2) this device must accept any interference received, including interference that may cause undesired operation.

FCC Caution: Any changes or modifications not expressly approved by the party responsible for compliance could void the user's authority to operate this equipment.

IMPORTANT NOTE:

FCC Radiation Exposure Statement:

This equipment complies with FCC radiation exposure limits set forth for an uncontrolled environment. This equipment should be installed and operated with minimum distance 20cm between the radiator & your body. This transmitter must not be co-located or operating in conjunction with any other antenna or transmitter.

IEEE 802.11b or 802.11g operation of this product in the U.S.A. is firmware-limited to channels 1 through 11.

Industry Canada Statement

Operation is subject to the following two conditions:

- 1) this device may not cause interference and
- 2) this device must accept any interference, including interference that may cause undesired operation of the device

IMPORTANT NOTE:

IC Radiation Exposure Statement:

This equipment complies with IC radiation exposure limits set forth for an uncontrolled environment. This equipment should be installed and operated with minimum distance 20cm between the radiator & your body.

This transmitter must not be co-located or operating in conjunction with any other antenna or transmitter.

Router Setup Manual

Chapter 1

Connecting the Router to the Internet

What's in the Box?	1-1
The Router Bottom Label	1-1
The Front of the Router	1-2
The Back of the Router	1-3
What You Need Before You Begin	1-3
Two Setup Methods: 1) Smart Wizard Setup 2) Manual Setup	1-4
Smart Wizard Setup	1-4
Manual Setup	1-5
To Connect Your Router	1-5
To Configure the Router to Use Your Internet Service	1-8
Product Registration, Support, and Documentation	1-9
How to Access the Router Again Later	1-9
How to Set Up and Test Basic Wireless Connectivity	1-10
Implement Appropriate Wireless Security	1-11

Chapter 2

Troubleshooting

Quick Tips	2-1
Be sure to always start your network in this sequence:	2-1
Make sure the Ethernet cables are securely plugged in.	2-1
Make sure the network settings of the computer are correct.	2-1
Check the router status lights to verify correct router operation.	2-2
To Verify Basic Functioning	2-2
Power Light Not On	2-2
Test Light Never Turns On or Stays On	2-2
LAN or Internet Port Lights Not On	2-3

Troubleshooting Logging In to the Router	2-3
Troubleshooting the Internet Service Connection	2-4
Internet Connection	2-4
Obtaining an Internet IP Address	2-4
Troubleshooting PPPoE	2-5
Troubleshooting Internet Browsing	2-6
Restoring the Default Configuration and Password	2-6
Advanced Troubleshooting Using the Ping Utility	2-7
Testing the Path from a PC to Your Router	2-7
Testing the Path from a PC to the Internet	2-8

Appendix A
Technical Specifications

Appendix B
Related Documents

Chapter 1

Connecting the Router to the Internet

This chapter describes how to connect your router and how to access the Internet through it.

What's in the Box?

The product package should contain the following items:

- The router
- An AC power adapter (varies by region)
- A blue Ethernet cable
- *Resource CD*, including:
 - The Smart Wizard Installation Assistant
 - This manual
- Warranty and Support Information cards

If any of the parts are incorrect, missing, or damaged, contact your NETGEAR dealer. Keep the carton, including the original packing materials, in case you need to return the product for repair.

The Router Bottom Label

View the label on the bottom of the router to identify the serial number, port connectors, status lights, and default login information.

The Front of the Router

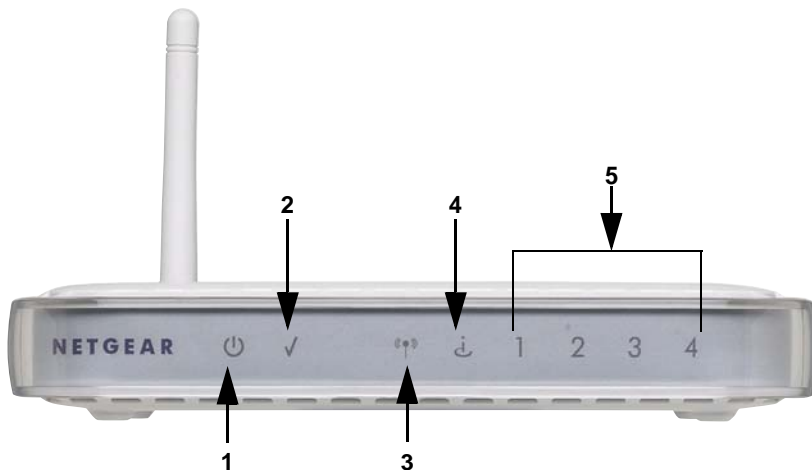


Figure 1-1

You can use the status lights on the front of the router to verify various conditions.

Table 1-1.

Status Light	Activity	Description
1. Power	On Off	Power is supplied to the router. Power is not supplied to the router.
2. Test	On Off	The system is initializing or in the middle of a firmware upgrade. The system is ready and running.
3. Wireless	On	Indicates that the Wireless port is initialized.
4. Internet	On -- Amber On -- Green Blink -- Green	The Ethernet cable is connected but the router has not gotten an Internet address. The router has an Internet address. Data is being communicated with the Internet.
5. LAN (Local Area Network) Lights 1-4	On (Green) Blink (Green) On (Amber) Blink (Amber) Off	The local port is connected to a 100 Mbps device. Data is being transmitted at 100 Mbps. The local port has detected a link with a 10 Mbps device. Data is being transmitted at 10 Mbps. No link is detected on this port.

The Back of the Router

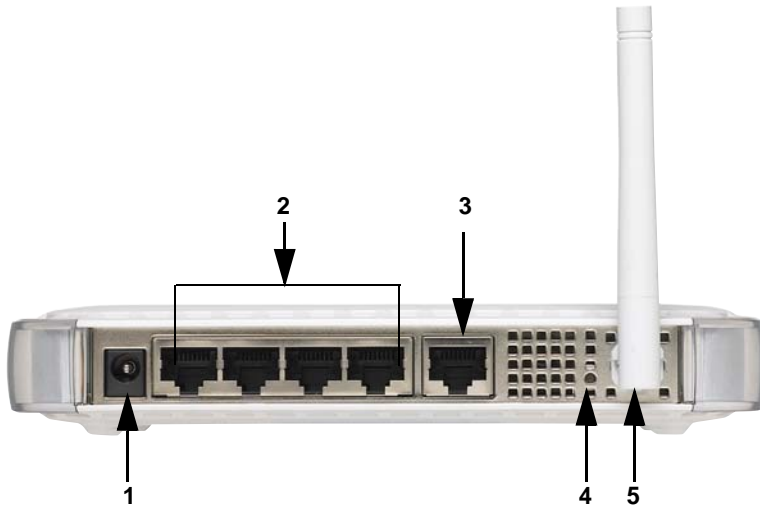


Figure 1-2

The back of the router has the following port connections:

1. Power adapter port
2. Four local Ethernet ports for connecting the local computers
3. Internet port for connecting to a cable or ADSL modem
4. Factory default reset button
5. Wireless antenna

What You Need Before You Begin

Prepare the following before you set up your router:

- Internet service.
- The configuration information your Internet Service Provider (ISP) gave you. Depending on how your Internet account was set up, you may need one or more of these settings for the router to access the Internet:
 - Host and Domain Names
 - Internet Login Name and Password (frequently an email address and password)
 - Domain Name Server (DNS) Addresses

- Fixed or Static IP Address

Your ISP should have provided you with all the information needed to connect to the Internet. If you cannot locate this information, you can ask your ISP to provide it.

- For cable modem service, use the computer you first used to set up your Internet service.

Two Setup Methods: 1) Smart Wizard Setup 2) Manual Setup

You have two methods available for setting up your router.

- **Smart Wizard Setup:** Click Setup on the CD to use the Smart Wizard.
 - This option is the easiest. The wizard guides you through the setup process, automates many of the steps, and verifies that necessary conditions exist and that steps you perform have been successfully completed.
 - This option requires a PC running Microsoft Windows.
- **Manual Setup:** This option is best if you cannot use the wizard on the CD, are replacing an existing router, or are technically knowledgeable. Follow the instructions in this manual to set up your router.

Use the setup option that best suites you.

Smart Wizard Setup

The wizard setup process should take about 20 minutes to complete.

1. Insert the NETGEAR CD into a Windows PC. The CD will automatically start and detect the language you are using on your PC. Accept the language option or change to a different language.



Note: If the CD does not automatically start, browse the CD and double-click on Autorun.

2. Click **Next** to proceed.
3. Click **Setup** to start the Smart Wizard installation assistant. Follow the wizard instructions.

Manual Setup

There are two steps to setting up your router:

1. Connect the router to the ADSL or cable modem, and connect a computer to the router.



Note: Your computer has to be set to automatically get its TCP/IP network settings from the router via DHCP. This is usually the case. If you are unsure about this, use the wizard on the CD which automatically takes care of this for you, or refer to the documentation for your computer.

2. Configure the router to use your Internet service.

To Connect Your Router

1. Connect the router, the computer, and the modem.
 - a. Turn off your computer.
 - b. Turn off and unplug the cable or ADSL broadband modem.
 - c. Locate the Ethernet cable (1) that connects your computer to the modem.

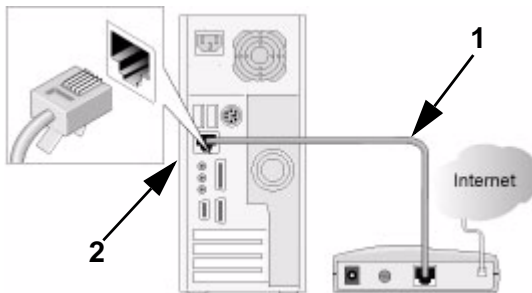


Figure 1-3

- d. Disconnect the cable at the computer end only (2).
- e. Use the label on the bottom of the router to locate the Internet port, which is on the left next to the power connection.

- f. Securely insert the Ethernet cable from your modem into the Internet port of the router (3).

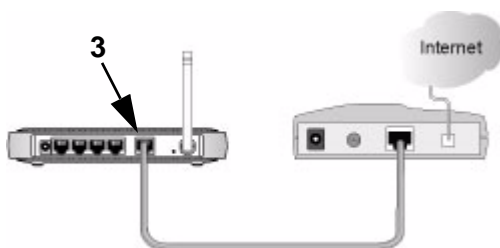


Figure 1-4

- g. Securely insert the blue cable (4) that came with your router into a LAN port on the router such as LAN port 1 (5), and the other end into the Ethernet port of your computer (6).

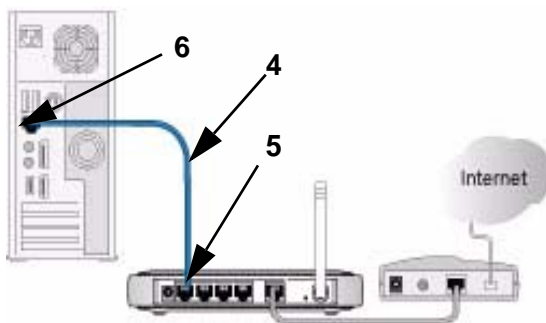


Figure 1-5

Your network cables are connected and you are ready to start your network.

- 2. Start your network in the correct sequence



Warning: Failure to start or restart your network in the correct sequence could prevent you from accessing the Internet.

- a. First, plug in and turn on the cable or DSL modem. Wait 2 minutes.
- b. Now, plug the power cord into your router and into a power outlet. Wait 1 minute.

- c. Last, turn on your computer.


	Note: For DSL customers, if software logs you in to the Internet, <i>do not</i> run that software. You may need to go to the Internet Explorer Tools menu, Internet Options, Connections tab page where you can select “Never dial a connection.”
---	--



Figure 1-6

- d. Check the router status lights to verify the following:
- *Power:* The power light (1) should turn solid green. If it does not, see [“Quick Tips” on page 2-1.](#)
 - *Test:* The test light (2) blinks when the router is first turned on, then goes off. If after 2 minutes it is still on, see [“Quick Tips” on page 2-1.](#)
 - *Wireless:* The Wireless light (3) should be off. The Smart Wizard configuration assistant turns on and sets up the wireless feature of your router.
 - *Internet:* The Internet port light (4) should be lit. If not, make sure the Ethernet cable is securely attached to the router Internet port and the modem, and the modem is powered on.
 - *LAN:* A LAN light (5) should be lit. Green indicates your computer is communicating at 100 Mbps; amber indicates 10 Mbps. If a LAN light is not lit, check that the Ethernet cable from the computer to the router is securely attached at both ends, and that the computer is turned on.

To Configure the Router to Use Your Internet Service

1. On a computer you connected to the router, open a browser such as Internet Explorer, Netscape Navigator, or Firefox.

The router automatically displays the NETGEAR Smart Wizard configuration assistant page.

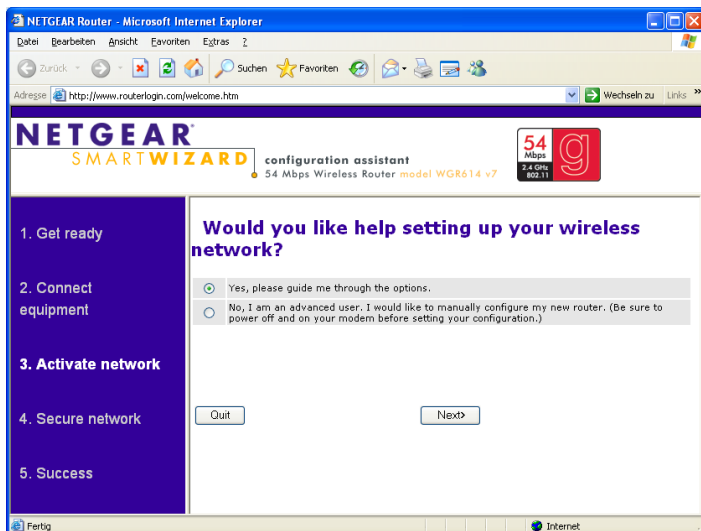


Figure 1-7



Note: If you do not see this page, type <http://www.routerlogin.net> in the browser address bar and click **Enter**.

- If you cannot connect to the router, verify your computer networking setup. It should be set to obtain *both* IP and DNS server addresses automatically, which is usually so. For help with this, consult the documentation that came with your computer or see the links in [Appendix B](#), “*Related Documents*”.
2. Click **Next**. The wizard will assist you with configuring your router to access the Internet. Advanced users who want to manually configure the router can select the No radio button, enter **admin** and **password** as the user name and password when prompted, and fill in the required information on the Basic Settings page.
 3. Click **Done** to finish.

You are now connected to the Internet!

Product Registration, Support, and Documentation

Register your product at <http://www.NETGEAR.com/register>. Registration is required before you can use our telephone support service. Product updates and Web support are always available by going to: <http://kbserver.netgear.com/>.

Documentation is available on the CD, on the support Web site, and on the documentation Web site. When the router is connected to the Internet, click the Knowledge Base or the Documentation link under the Web Support menu to view support information or the documentation for the router.

How to Access the Router Again Later

The configuration assistant wizard only appears when the router is in its factory default state, and access to the router does not require a login name or password. After you configure the router (or bypass the configuration assistant wizard), it will not appear again, and you will have to log in to the your router to make changes to it.



Note: The factory default state is restored when you use the factory reset button. See “[Restoring the Default Configuration and Password](#)” on page 2-6 for more information on this feature.

To access the router using its login name and password, follow these instructions.

1. Connect to the router by typing **<http://www.routerlogin.net>** in the address field of your browser, then click **Enter**.

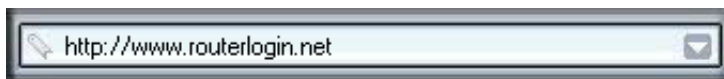


Figure 1-8




Tip: Connect to the router by typing any one of these three URLs in the address field of your browser, then clicking Enter:

- <http://www.routerlogin.net>
- <http://www.routerlogin.com>
- <http://192.168.1.1>

The router will prompt you to enter the user name of admin and the password.

- For security reasons, the router has its own user name and password. When prompted, enter **admin** for the router user name and **password** for the router password, both in lower case letters.

	Note: The router user name and password are not the same as any user name or password you may use to log in to your Internet connection.
---	---

A login window like the one shown below opens:



Figure 1-9

Enter the user name and password. The router will display its home page.

When the router is connected to the Internet, click the Knowledge Base or the Documentation link under the Web Support menu to view support information or the documentation for the router.

If you do not click Logout, the router will wait 5 minutes after there is no activity before it automatically logs you out.

How to Set Up and Test Basic Wireless Connectivity

Follow the instructions below to set up and test basic wireless connectivity. Once you have established basic wireless connectivity, you can enable security settings appropriate to your needs.

- Log in to the router at its default LAN address of <http://192.168.1.1> with its default user name of **admin** and default password of **password**, or using whatever LAN address and password you have set up.
- Click the Wireless Settings link in the main menu of the router.

- Note that the default SSID is **NETGEAR**.



Note: The SSID of any wireless adapters must match the SSID you configure in the router. If they do not match, you will not get a wireless connection.

- Set the Region. The region selection feature may not be available in all countries, such as USA.
- Click Apply to save your changes.



Note: If you are configuring the router from a wireless computer and you change the router's SSID, channel, or security settings, you will lose your wireless connection when you click Apply. You must then change the wireless settings of your computer to match the router's new settings.

- Configure and test your computers for wireless connectivity.

Program the wireless adapter of your computers to have the same wireless network name (SSID) as the router. Check that they have a wireless link and are able to obtain an IP address by DHCP from the router.

Implement Appropriate Wireless Security



Warning: Indoors, computers can connect over 802.11g wireless networks at a maximum range of up to 300 feet. Such distances can allow for others outside of your immediate area to access your network.

Unlike wired network data, your wireless data transmissions can extend beyond your walls and can be received by anyone with a compatible adapter. For this reason, use the security features of your wireless equipment. The router provides highly effective security features which are covered in detail in full reference manual that is available from a link on the CD as well as a link in the main menu of your router. Follow the instructions in the full manual and in the router help screens to deploy the security features appropriate to your needs.

Chapter 2

Troubleshooting

This chapter gives information about troubleshooting your router.

Quick Tips

Here are some tips for correcting simple problems you may have.

Be sure to always start your network in this sequence:

1. Turn off and unplug the modem from its power outlet, and turn off the router and computer.
2. Turn on the modem, and wait two minutes
3. Turn on the router and wait 1 minute
4. Turn on the computer.

Make sure the Ethernet cables are securely plugged in.

- The Internet status light on the router will be lit if the Ethernet cable to the router from the modem is plugged in securely and the modem and router are both turned on.
- For each powered on computer connected to the router with a securely plugged in Ethernet cable, the corresponding router LAN port status light will be lit. The label on the bottom of the router identifies the number of each LAN port.

Make sure the network settings of the computer are correct.

- LAN connected computers *must* be configured to obtain an IP address automatically via DHCP. Please see the links see links in [Appendix B, “Related Documents”](#) for help with this.
- Some cable modem services require you to use the MAC address of the computer registered on the account. If so, in the Router MAC Address section of the Basic Settings menu, select, “Use this Computer’s MAC Address.” Click **Apply** to save your settings. Restart the network in the correct sequence.

Check the router status lights to verify correct router operation.

If the Power light does not turn solid green within 2 minutes after turning the router on, reset the router according to the instructions in [“Restoring the Default Configuration and Password” on page 2-6](#).

To Verify Basic Functioning

After you turn on power to the router, the following sequence of events should occur:

1. When power is first applied, verify that the Power light is on (see [“The Front of the Router” on page 1-2](#) for an illustration).
2. Verify that the Test light lights within a few seconds, indicating that the self-test procedure is running.
3. After approximately 20 seconds, verify that:
 - a. The Test light turned off.
 - b. The LAN port lights are lit for any local ports that are connected.
 - c. The Internet port is connected and its light is lit.

If a port's light is lit, a link has been established to the connected device. If a LAN port is connected to a 100 Mbps device, verify that the port's light is green. If the port is 10 Mbps, the light will be amber.

Power Light Not On

If the Power and other lights are off, check the following:

- Make sure that the power cord is properly connected to your router and that the power supply adapter is properly connected to a functioning power outlet.
- Check that you are using the power adapter supplied by NETGEAR for this product.

If the error persists, you have a hardware problem and should contact technical support.

Test Light Never Turns On or Stays On

When the router is turned on, the Test light turns on for about 20 seconds and then turns off. If the Test light does not turn on or stays on, the router has a problem.

If you experience problems with the Test light, cycle the power to see if the router recovers.

If all lights including the Test light are still on one minute after power up:

- Turn the power off and back on to see if the router recovers.
- Clear the router's configuration to factory defaults. This will set the router's IP address to 192.168.1.1. This procedure is explained in [“Restoring the Default Configuration and Password” on page 2-6](#).

If the error persists, you might have a hardware problem and should contact technical support.

LAN or Internet Port Lights Not On

If either the LAN or Internet lights do not light when the Ethernet connection is made, check the following:

- Make sure that the Ethernet cable connections are secure at the router and at the computer.
- Make sure that power is turned on to the connected computer.
- Be sure you are using Ethernet cables like the cable that was supplied with the router.

Troubleshooting Logging In to the Router

If you are unable to log in to the router, check the following:

- If you are using an Ethernet-connected computer, check the Ethernet connection between the computer and the router as described in the previous section.
- Make sure you are using the correct login information. The factory default login name is **admin** and the password is **password**. Make sure that CAPS LOCK is off when entering this information.
- Your computer's address should be in the range of 192.168.1.2 to 192.168.1.254. Refer to your computer's documentation for help with finding your computer's IP address.



Note: If your computer's IP address is 169.254.x.x, verify that you have a good connection from the computer to the router, then restart your computer.

- Make sure your browser has Java, JavaScript, or ActiveX enabled. If you are using Internet Explorer, click Refresh to be sure the Java applet is loaded. Try quitting the browser and launching it again.

Troubleshooting the Internet Service Connection

If your router is unable to access the Internet, check that the Internet connection is working, and then check that the router can get an Internet address.

Internet Connection

First verify that your cable or ADSL modem has a successful connection. The cable or ADSL modem status lights indicate if the modem connection is successful or not. Check your modem documentation or call your Internet service provider for help with verifying that the modem has a successful connection.

Router Internet Light is Green or Blinking Green

If your Internet light is green or blinking green, then you have a good Internet connection, and your wiring is correct.

Router Internet Light Blinking Amber

If your Internet light is blinking amber, then your router is attempting to make an Internet connection with the service provider. The LED should turn green within several minutes. If it does not, check the Internet connection on the modem as described above.

Router Internet Light Off

If the Internet light is off, verify that the Ethernet cable is securely connected between the cable or ADSL modem, and that both the modem and router are turned on.

Obtaining an Internet IP Address

If your router is unable to access the internet, and your Internet light is amber or blinking amber, check the router to see if it is able to get an Internet IP address from your service provider. Unless you have a static IP address, your router automatically requests an IP address from your service provider.

To check the Internet IP address from the browser interface:

1. Log in to the router.
2. Use the Router Status link under the Maintenance heading to check that an IP address is shown for the Internet Port. If 0.0.0.0 is shown, your router has not obtained an IP address from your service provider.

If your router is unable to obtain an IP address from the your service provider, the problem may be one of the following:

- Your service provider may require a login. Ask your service provider whether they require PPP over Ethernet (PPPoE) login.
- You may have incorrectly set the Service Name, User Name and Password. See [“Troubleshooting PPPoE”](#), below.
- Your service provider may check for your computer's host name. Assign the computer Host Name of your ISP account to the router in the browser-based Basic Settings menu.
- Your service provider only allows one Ethernet MAC address to connect to Internet, and may check for your computer's MAC address.

In this case, inform your service provider that you have bought a new network device, and ask them to use the router's MAC address.

OR

Configure your router to spoof your computer's MAC address. This can be done in the Basic Settings menu. Refer to the online help in the router main menu.

Troubleshooting PPPoE

Troubleshoot a PPPoE connection in this way:

1. Log in to the router.
2. Under the Maintenance heading, select the Router Status link.
3. Click the Connection Status button.
4. If all of the steps indicate “OK” then your PPPoE connection is up and working.
5. If any of the steps indicates “Failed”, you can attempt to reconnect by clicking “Connect”. The router will continue to attempt to connect indefinitely.

If you cannot connect after several minutes, you may be using an incorrect Service Name, User Name or Password. There also may be a provisioning problem with your ISP.



Note: Unless you connect manually, the router will not authenticate using PPPoE until data is transmitted to the network.

Troubleshooting Internet Browsing

If your router can obtain an IP address but your computer is unable to load any Web pages from the Internet, check the following.

- Your computer may not recognize any DNS server addresses.
A DNS server is a host on the Internet that translates Internet names (such as www addresses) to numeric IP addresses. Typically your ISP will provide the addresses of one or two DNS servers for your use. If you entered a DNS address during the router's configuration, restart your computer. Alternatively, you can configure your computer manually with DNS addresses, as explained in the documentation for your computer.
- Your computer may not have the router configured as its default gateway.
Reboot the computer and verify the router address (192.168.1.1) is listed by your computer as the default gateway address.

Restoring the Default Configuration and Password

This section explains how to restore the factory default configuration settings, changing the router's administration password to **password** and the IP address to 192.168.1.1. You can erase the current configuration and restore factory defaults.

To restore the factory default configuration settings, use the Default Reset button on the rear panel of the router.

1. Use a sharp object like a pen or a paper clip to press and hold the default reset button for about 20 seconds (see [page 1-3](#)), until the test light on the front turns on.
2. Release the reset button and wait for the router to reboot.

Advanced Troubleshooting Using the Ping Utility

Most computers and routers have a diagnostic utility called *ping* that sends an request to a target device. The device then replies. The ping utility makes it easy to troubleshoot a network.

Testing the Path from a PC to Your Router

You can ping the router to verify that the LAN path from your computer to your router is set up correctly.

1. From the Windows toolbar, click **Start** and select **Run**.
2. In the field provided, type Ping followed by the address of the router, as in this example:

```
ping www.routerlogin.net  
OR  
ping 192.168.1.1
```

3. Click **OK**.

You should see a message like this one:

```
Pinging 192.168.1.1 with 32 bytes of data
```

If the path is working, you see this message:

```
Reply from 192.168.1.1: bytes=32 time=NN ms TTL=xxx
```

If the path is not working, you see this message:

```
Request timed out
```

If the path is not functioning correctly, you could have one of the following problems:

- Wrong physical connections
 - Make sure the LAN port light is on. If the light is off, follow the instructions in [“LAN or Internet Port Lights Not On”](#) on page 2-3.
 - Check that the corresponding lights are on for your computer’s network interface card.
- Wrong network configuration
 - Verify that the Ethernet card driver software and TCP/IP software are both installed and configured on your computer.
 - Verify that the IP address for your router and your computer are correct and that the addresses on both begin with 192.168.1.

Testing the Path from a PC to the Internet

After verifying that the path between your computer and the router works correctly, test the path from your PC to the Internet. From the Windows run menu, type:

```
PING -n 10 <IP address>
```

where *<IP address>* is the IP address of a remote device such as your ISP's DNS server.

If the path is functioning correctly, replies as in the previous section are displayed. If you do not receive replies:

- Check that your PC has the IP address of your router listed as the default gateway. If the IP configuration of your PC is assigned by DHCP, this information will not be visible in your PC's Network Control Panel. Verify that the IP address of the router is listed as the TCP/IP default gateway.
- Check to see that the network address of your PC (the portion of the IP address specified by the netmask) is different from the network address of the remote device.
- If your ISP assigned a host name to your PC, enter that host name as the Account Name in the Basic Settings menu.

Appendix A

Technical Specifications

This appendix provides technical specifications for the router.

Network Protocol and Standards Compatibility

Data and Routing Protocols: TCP/IP, RIP-1, RIP-2, DHCP, PPPoE, PPTP, Bigpond, Dynamic DNS, and UPnP

Power Adapter

North America: 120V, 60 Hz, input
UK, Australia: 240V, 50 Hz, input
Europe: 230V, 50 Hz, input
Japan: 100V, 50/60 Hz, input
All regions (output): 12V DC @ 1.0A output

Physical

Dimensions: 1.1" x 5.8" x 3.8"
286 x 147 x 957 mm
Weight: 0.45 lbs.
0.20 kg

Environmental

Operating temperature: 0° to 40° C (32° to 104° F)
Operating humidity: 90% maximum relative humidity, noncondensing

Electromagnetic Emissions

Meets requirements of: FCC Part 15 Class B; EN 55022/24 (CISPR 22/24) Class B; EN 60950 (CE LVD) Class B; MIC

Interface Specifications

LAN: 10BASE-T or 100BASE-Tx, RJ-45
WAN: 10BASE-T or 100BASE-Tx, RJ-45

Appendix B

Related Documents

This appendix provides links to reference documents you can use to gain a more complete understanding of the technologies used in your NETGEAR product.

Document	Link
Internet Networking and TCP/IP Addressing	http://documentation.netgear.com/reference/enu/tcpip/index.htm
Preparing a Computer for Network Access	http://documentation.netgear.com/reference/enu/wsdhcp/index.htm
Glossary	http://documentation.netgear.com/reference/enu/glossary/index.htm

