

NETGEAR®

Connect with Innovation™

NeoTV Max Streaming Player (NTV300SL) Installation Guide



© 2012 NETGEAR, Inc. All rights reserved.

No part of this publication may be reproduced, transmitted, transcribed, stored in a retrieval system, or translated into any language in any form or by any means without the written permission of NETGEAR, Inc.

Technical Support

Thank you for choosing NETGEAR. To register your product, get the latest product updates, or get support online, visit us at <http://support.netgear.com>.

Phone (US only): 1-888-NETGEAR

Phone (Other Countries):

See http://support.netgear.com/app/answers/detail/a_id/984.

Trademarks

NETGEAR, the NETGEAR logo, and Connect with Innovation are trademarks and/or registered trademarks of NETGEAR, Inc. and/or its subsidiaries in the United States and/or other countries. Information is subject to change without notice. Other brand and product names are registered trademarks or trademarks of their respective holders. © 2012 NETGEAR, Inc. All rights reserved.

HDMI, the HDMI Logo, and HighDefinition Multimedia Interface are trademarks or registered trademarks of HDMI Licensing LLC in the United States and other countries.

Manufactured under license from Dolby laboratories. Dolby and the double-D symbol are trademarks of Dolby Laboratories.

Statement of Conditions

In the interest of improving internal design, operational function, and/or reliability, NETGEAR reserves the right to make changes to the products described in this document without notice. NETGEAR does not assume any liability that may occur due to the use or application of the product(s) or circuit layout(s) described herein.

What's Included in the Box



NeoTV Streaming Player



Remote control



Power adapter



AV cable



Installation guide

Front and Rear Views

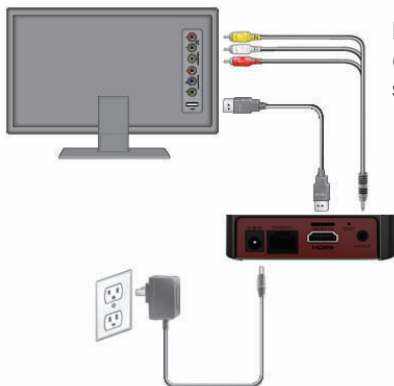


What You Need to Use Your NeoTV Player

- TV with HDMI port
- HDMI cable
- Broadband Internet connection
- A wireless or wired network
- Device with Internet browser for service activation

Connect to the TV

1. Make sure that your TV is on and set to display the correct video input.
2. Connect an HDMI cable (sold separately) to the HDMI port on your player and to the **HDMI IN** port on your TV. If you have an Analog TV, connect the AV composite cable to your TV. When the HDMI cable is connected, there will be no output to the AV composite port.



HDMI supports 5.1 surround sound (if available). You do not need a separate audio cable.

3. Connect the power adapter to your player, and plug it into an electrical outlet.

Remote Control Batteries

To use the remote control, remove the yellow isolation strip at the bottom of the remote.

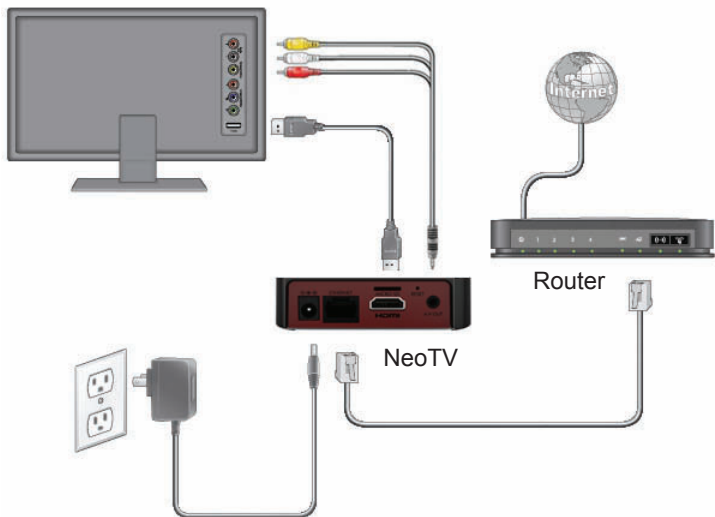
Connect to Your Home Network

To use your player, you need to connect it to your home network with either a wireless or a wired connection. After you get your network ready, the onscreen guided setup helps you connect your player to your network.

IMPORTANT: Do not place anything on top of your NeoTV player. Placing objects on top of your player can interfere with the wireless signal or cause the player to overheat.

Wired Connection

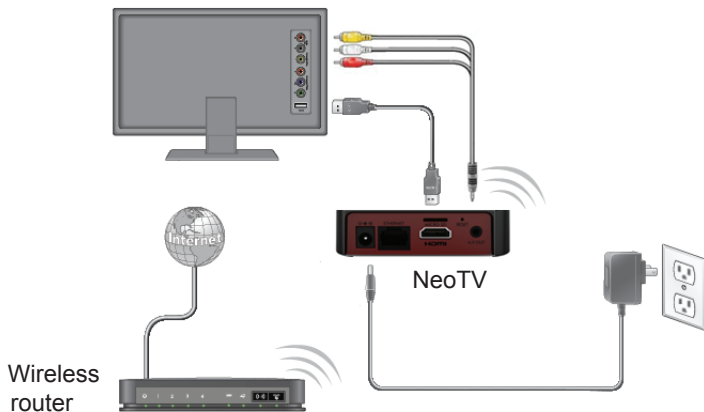
Use an Ethernet cable (sold separately) to connect your player to a LAN port on your router.



Wireless Connection

1. If you are using a wireless connection, place your player within range of your wireless network. For best wireless reception, avoid enclosing your player in a cabinet.

To connect wirelessly, you can use Wi-Fi Protected Setup (WPS), or you can select your network and enter its password using the onscreen setup guide.

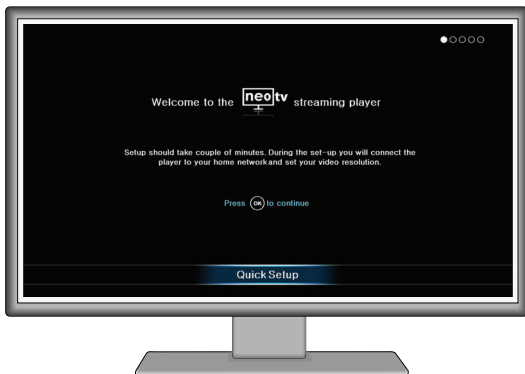


2. If you do not receive a strong signal during the onscreen setup, rotate your player or move it closer to your router.

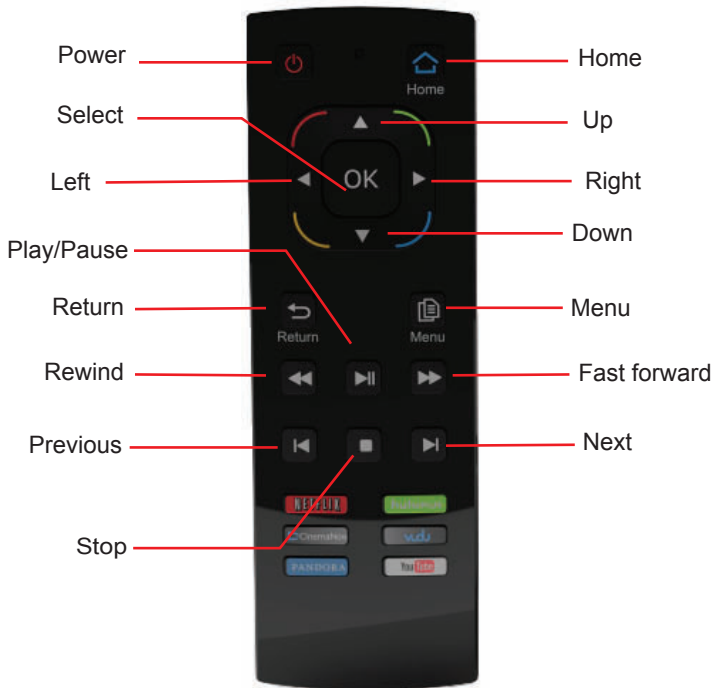
Onscreen Guided Setup

On your TV:

- Use the remote control to follow the NeoTV onscreen setup instructions, which include setting the output resolution to the TV, and the standby timing, connecting to a network, and checking for the latest NeoTV software update.
- Your player might download software updates or restart during setup.
- Once you complete setup, select a channel icon (such as Netflix or Pandora) to enjoy the content.



Remote Control



Remote Control App

NeoTV Remote app turns your iPhone or Android phone into a NeoTV Streaming Player remote control.



To Install the Remote Control App

1. Using your iPhone or Android smartphone, navigate to the Apple AppStore or Android Market, and search for NeoTV Remote. You can use the following QR codes to speed up this process:



Apple App Store



Android Market

2. Install the app on your phone.
3. Make sure that the phone is connected to the same WiFi network (SSID) as your NeoTV Streaming Player.
4. Launch the app, and it searches for your device and connects.

Intel WiDi Channel


The Intel Wireless Display (WiDi) channel lets you display your laptop screen on your TV.

Note: To use the Intel WiDi channel, your laptop must:

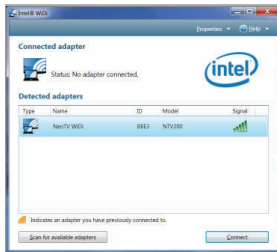
- Be Intel WiDi-capable
 - Have the Intel WiDi software installed.
1. From the NeoTV main screen, use the remote to select the Intel WiDi icon:



The Ready for Connection screen displays.

2. On your laptop, launch the Intel WiDi software.
 - If your laptop has a  button or key, press it.
 - From Windows, select **Start**. Type **Intel WiDi** in the search field.
 - Select and run the Intel WiDi software.

3. Use the Intel WiDi software to scan and find the NeoTV WiDi adapter.

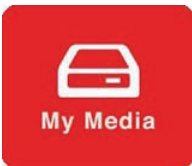


4. Double-click the detected NeoTV to connect to it. If you are connecting the laptop to the NeoTV for the first time, the NeoTV adapter displays a 4-digit security code on your TV.
5. Enter this security code into the Intel WiDi application on your laptop. Within a few seconds, the TV screen displays your laptop screen.
6. To exit the NeoTV WiDi connection or return to the NeoTV home page, you need to disconnect the WiDi connection.
 - a. Click the **Disconnect** button on your laptop WiDi application, and wait for the Ready for Connection screen to appear on your TV.
 - b. Press the NeoTV remote **Home** button to return to the NeoTV home page.

My Media

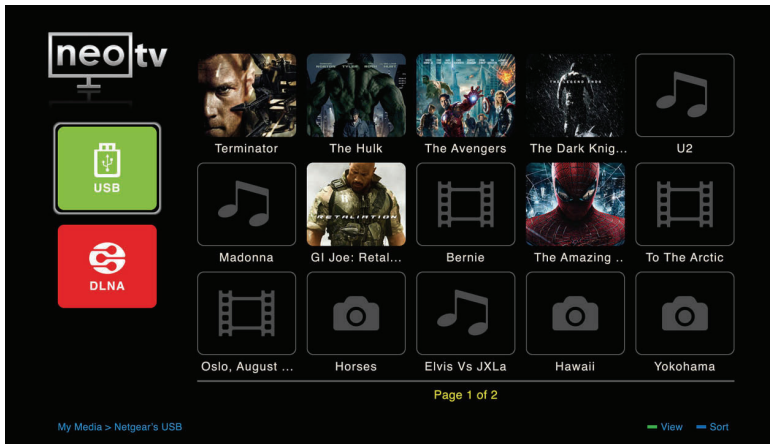
My Media channel lets you play back your local storage contents from a USB disk, Micro SD card, and local network DLNA server.

1. Select the My Media icon from the NeoTV main screen.



2. Then use the remote to select different types of local content devices. The valid devices display on the left.

3. Select one of the displayed devices, browse the contents, and select a media file.



4. Press the green button to change the list mode. Press the green button again to return to the default list mode.

Technical Support

Thank you for selecting NETGEAR products.

After installing your device, locate the serial number on the label of your product and use it to register your product at www.NETGEAR.com/register. Registration is required before you can use our telephone support service. Registration through our website is strongly recommended.

Go to <http://support.netgear.com> for product updates and web support.

GPL might be included in this product; to view the GPL license agreement, go to <ftp://downloads.netgear.com/files/GPLnotice.pdf>.

Warning: *DO NOT stack equipment, or place equipment in tight spaces, in drawers, or on carpets. Make sure your equipment is surrounded by at least 2 inches of air space.*

Federal Communication Commission Interference Statement

This device complies with Part 15 of the FCC Rules. Operation is subject to the following two conditions: (1) This device may not cause harmful interference, and (2) this device must accept any interference received, including interference that may cause undesired operation.

This equipment has been tested and found to comply with the limits for a Class B digital device, pursuant to Part 15 of the FCC Rules. These limits are designed to provide reasonable protection against harmful interference in a residential installation. This equipment generates, uses and can radiate radio frequency energy and, if not installed and used in accordance with the instructions, may cause harmful interference to radio communications. However, there is no guarantee that interference will not occur in a particular installation.

If this equipment does cause harmful interference to radio or television reception, which can be determined by turning the equipment off and on, the user is encouraged to try to correct the interference by one of the following measures:

- Reorient or relocate the receiving antenna.
- Increase the separation between the equipment and receiver.
- Connect the equipment into an outlet on a circuit different from that to which the receiver is connected.
- Consult the dealer or an experienced radio/TV technician for help.

FCC Caution: Any changes or modifications not expressly approved by the party responsible for compliance could void the user's authority to operate this equipment.

This transmitter must not be co-located or operating in conjunction with any other antenna or transmitter.

Radiation Exposure Statement:

This equipment complies with FCC radiation exposure limits set forth for an uncontrolled environment. This equipment should be installed and operated with minimum distance 20cm between the radiator & your body.

Note: The country code selection is for non-US model only and is not available to all US model. Per FCC regulation, all WiFi product marketed in US must fixed to US operation channels only.

NETGEAR, Inc.
350 East Plumeria Drive
San Jose, CA 95134 USA



201-15503-01

July 2012