

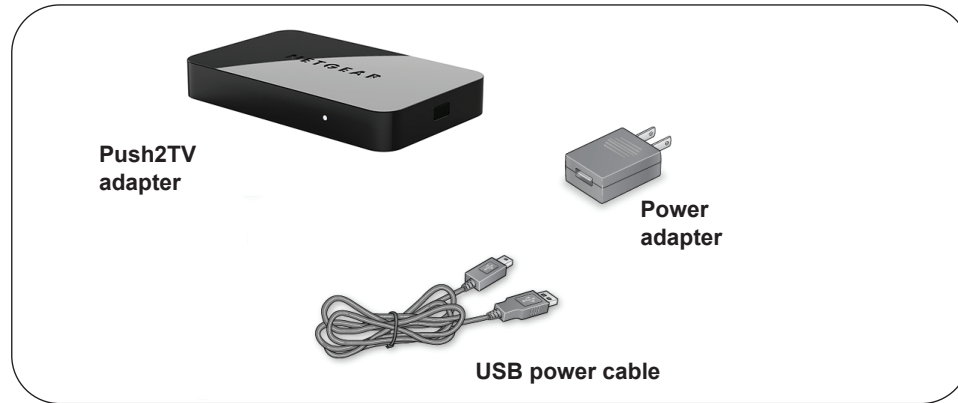
# NETGEAR

## Installation Guide

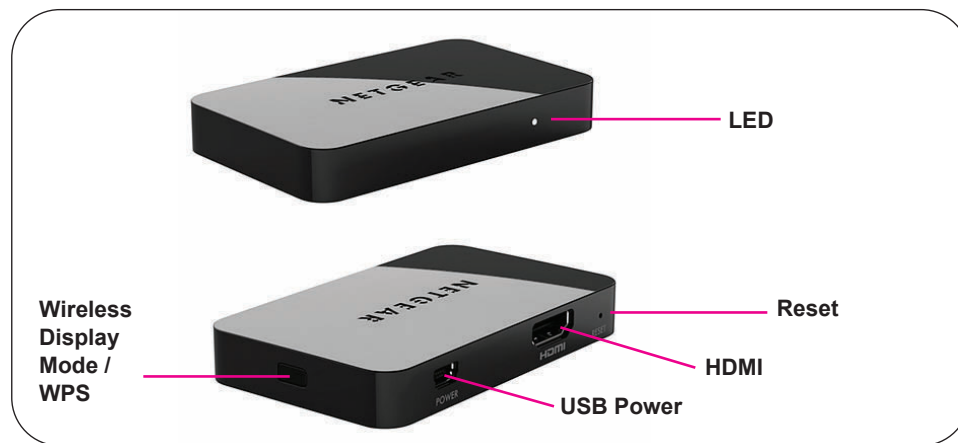
Connect with Innovation™

### Push2TV Adapter for Wireless Display (PTV3000)

#### Package Contents



#### Push2TV Front and Back Views



## Installation

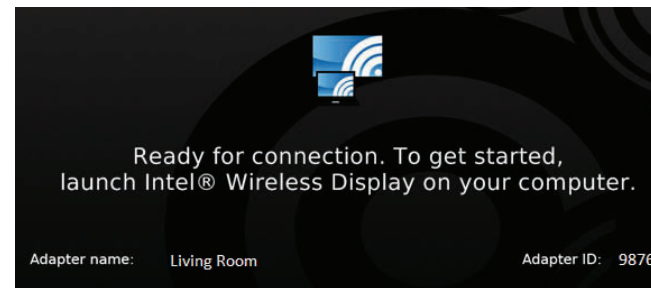
To install and set up the Push2TV adapter with Intel WiDi:

1. Connect the Push2TV adapter to your TV and plug in the power adapter.




The Push2TV adapter LED is blinking when the adapter powers up. The LED turns solid to indicate that the adapter is ready, but is not yet connected to your computer.

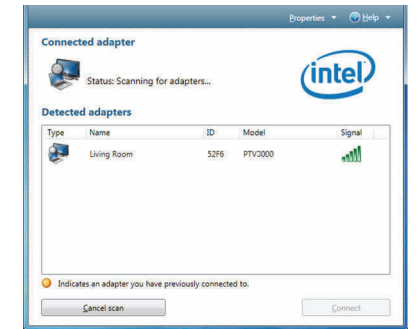
2. Turn on your TV and select the correct TV input source for your TV.
  - If you are not sure which input source to use, check the documentation that came with your TV set.
  - The Ready for Connection screen displays on your TV within 30 seconds.



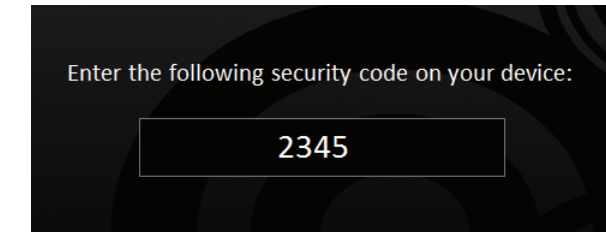
If you do not see this screen, make sure that the TV input is set to the HDMI port where the Push2TV adapter is connected and all cable connections are firmly secured.

3. On your laptop, launch the Intel Wireless Display software. There are two ways to launch the software
  - If your laptop has a  button or key, press it.
  - From Windows, select **Start**. In the search field, type **Intel Wireless Display**. Select and run the Intel Wireless Display software.
4. Use the Intel Wireless Display software to scan and find the Push2TV adapter.

The screen on the right shows that the Intel Wireless Display software has found the wireless adapter.



5. Double-click the detected Push2TV adapter to connect to it.
6. If you are connecting the laptop to the Push2TV adapter for the first time, the Push2TV adapter displays a 4-digit security code on the TV. Enter this 4-digit security code into the Intel Wireless Display software.



7. Within a few seconds, the TV screen displays your laptop screen. The LED on the Push2TV adapter turns solid. You are now ready to use Push2TV for Intel Wireless Display.

#### Adjusting Your TV Display

You can adjust the image display on the TV screen:

- To change how the image fits on the TV screen, on the Intel Wireless Display, click the **Properties** button. Then click the **Resize TV picture** button and adjust the picture using the plus or minus symbols.
- To remove black bars displayed on the sides of your TV screen, open the graphics properties and change the resolution to 1280x720. Changing the resolution might result in black bars on the laptop. To remove the black bars, open the graphics properties and clear the **preserve aspect ratio** check box.

## Miracast Wireless Display

Push2TV now supports Miracast™ Wireless Display. To switch between Intel WiDi and Miracast modes, press the button on the side of the Push2TV for 2 seconds. You can then launch the wireless display application on a Miracast-compatible smartphone, tablet, or laptop, and connect.

### FAQs

- Can I display different content on the TV while I'm using my laptop?  
Yes. To display different content, change the screen display setting on your computer to extend mode.
- Can I close the laptop lid and still use Wireless Display?  
Closing the laptop lid might put the system to sleep or turn it off and, as a result, close the connection. To prevent this from happening, from Windows select **Start > Search**, type **Closing lid** in the search field, and change the settings to **do nothing**.
- Why can't I play some DVD and Blu-ray discs?  
Many discs have copy protection mechanisms that prevent playback on Intel Wireless Display before software version v2.1.0.0. However, personal content you have burned to a disc will play.
- Can I mute my laptop and still watch videos with sound?  
Yes. Even if your laptop has sound muted, the sound for the media you are playing will play on your TV.
- How can I fix the delay in the cursor?  
You cannot change the delay, but you can turn off the cursor on the TV and use the laptop to navigate. To do this, connect to the adapter using Intel WiDi software on your PC, and click **Properties**.
- What should I do if I get a Windows Firewall security alert?  
From Windows, select **Start > Search** and in the search field type **Allow a program through a Windows Firewall**. Add WiDiApp and Wireless PAN DHCP Server to the list of allowed programs. Make sure both the **private** and **public** check boxes are selected. If you are not using Windows Firewall, consult your firewall user's manual.

- What should I do if the TV stops showing my laptop screen?  
Use Intel Wireless Display to check the wireless connection and reconnect to the Push2TV adapter if necessary. If the situation continues, try moving your laptop closer to the Push2TV adapter or place it in a location with a clear line of sight to the Push2TV adapter. Changing the channel of your WiFi router might also help.  
For more information, launch Intel Wireless Display and select **Help**.
- How can I restore factory settings to the Push2TV?  
The Reset button is on the bottom of the unit. Use a paper clip to press and hold the **Reset** button for 10 seconds.
- How can I update my Push2TV?
  - Use your computer and navigate to <http://www.netgear.com/stream> to check for and download the latest firmware.
  - Press the **Wireless Display Mode / WPS** button on the side of the Push2TV unit for more than 5 seconds.
  - Using the wireless network manager utility on your computer, search for the **Push2TV** wireless network name (SSID) and connect.
  - Open a browser on your computer, and you are automatically redirected to the Push2TV update page. If you are not automatically redirected, type <http://192.168.3.1/> into the browser address bar.
  - Follow the steps on the web page to upload the firmware image you downloaded in **step a** and complete the installation.
- Where can I find information about updating my wireless display?  
Go to <http://www.intel.com/go/wirelessdisplayupdate>.
- What is Miracast and which devices are supported?  
The new Miracast standard enables media content to be transmitted over a WiFi connection, directly from a compatible smartphone, tablet, or laptop to the Push2TV. The standard is new and smartphones, tablets, and laptops supporting Miracast will be available in late 2012 or early 2013.

## Technical Support

Thank you for selecting NETGEAR products.

After installing your device, locate the serial number on the label of your product and use it to register your product at <http://my.netgear.com>. You must register your product before you can use NETGEAR telephone support. Also go to <http://support.netgear.com> for product updates, additional documentation, and support.

For complete DoC, go to the NETGEAR EU Declarations of Conformity website at: [http://support.netgear.com/app/answers/detail/a\\_id/11621/](http://support.netgear.com/app/answers/detail/a_id/11621/)

For indoor use only in all EU countries and Switzerland.

**WARNING:** Do not stack equipment, or place equipment in tight spaces, in drawers, or on carpets. Make sure your equipment is surrounded by at least 2 inches of air space.

Get the user manual at <http://downloadcenter.netgear.com> or through a link in the product user interface.

Technical Specifications	
Compatible laptops	<ul style="list-style-type: none"> <li>Intel Core i3, i5, or i7 processor</li> <li>Intel Graphics Media Accelerator HD graphics adapter</li> <li>Intel WiFi Link wireless networking adapter</li> <li>Microsoft Windows 7 operating system</li> <li>Intel Wireless Display software</li> </ul>
Network interface	IEEE 802.11 a/b/g/n wireless
Power	5V/1A
Physical dimensions (d x w x h)	84 x 51 x 12 mm (3.3 x 2.01 x 0.47 inches)
Weight	48 g
Operating temperature	0 to 40° C (32 to 105° F)
Electromagnetic compliance	CE mark, Commercial; FCC Part 15, Class B; EN 55 022 (CISPR 22) Class B, C-Tick
Power adapter safety approval	CE mark, Commercial UListed (UL 1950), C-Tick



201-15460-03



August 2012



This symbol was placed in accordance with the European Union Directive 2002/96 on the Waste Electrical and Electronic Equipment (the WEEE Directive). If disposed of within the European Union, this product should be treated and recycled in accordance with the laws of your jurisdiction implementing the WEEE Directive.

©2012 by NETGEAR, Inc.. All rights reserved. NETGEAR and the NETGEAR logo are registered trademarks of NETGEAR, Inc. in the United States and/or other countries. Other brand and product names are trademarks or registered trademarks of their respective holders. Information is subject to change without notice.