

**Product Installation Guide**  
**For**  
**5G wireless Card**

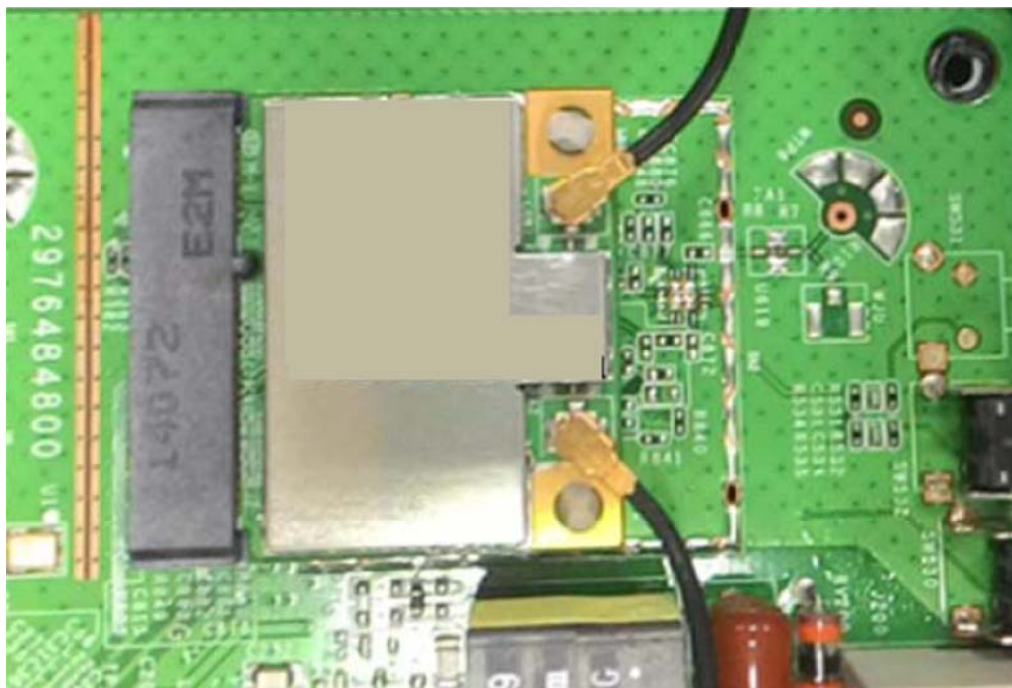
**Model Number : N600**

**Revision: 1.0**

## Installing the Wireless PCIe Card module

This PCI Express card is based on MTK chip that complied with IEEE 802.11ac from 5GHz, and it is also backward compatible to comply with IEEE 802.11a and IEEE 802.11n standard.

Step-1: Installing PCIe Card module on the PCIe SLOT on PCB board.



Step-2: Connect the antenna cable to the PCB board.

Step-3: boot on the device.

When you have completed the hardware installation, please turn on router then software will be automatically detect PCIe wifi module and turn on device.