

Installation Guide

Follow these quick steps to install your WG311T PCI Adapter.

The basic installation and configuration instructions below assume that your wireless network connection will be to an access point, and you are not using WEP security. Please refer to the *Reference Manual* on the *108 Mbps Wireless PCI Adapter Resource CD* for detailed instructions on configuring WEP, using Ad-Hoc mode, or using advanced options.

Windows XP Basic Installation

1 First, install the WG311T software

- Power on your desktop and log into the Windows Operating System
- Insert the *108 Mbps Wireless PCI Adapter Resource CD* into your CD-ROM drive. The CD main page shown below will load.



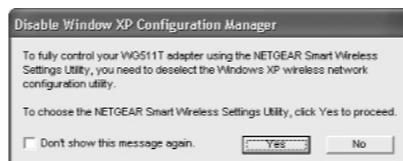
- Click the **Install Driver & Utility** link.
- Follow the InstallShield Wizard steps, and click **Finish** when done. If prompted to Restart the computer, choose **Shut Down**.

2 Next, install the WG311T Wireless PCI Adapter

- Shut down the PC and remove the power cord from the PC. Insert the WG311T Wireless PCI Adapter into an available PCI slot. Connect the antenna to the adapter and position the antenna to the up position. Reconnect the power cord and reboot the computer.
- After a short delay, the Found New Hardware Wizard displays. Click **Next** to proceed with the wizard.

Note: If a Windows XP logo testing warning appears, click **Continue Anyway** to proceed.

- When prompted, select your country.
- When prompted to enable the NETGEAR Smart Wireless Settings Utility, click **Yes** to accept this option.



If you choose **No**, you must read the Windows XP documentation for an explanation of how to use the Windows XP wireless network configuration utility.

3 Now, configure your WG311T

- Click the  icon in the Windows system tray to open the WG311T Smart Wireless Settings Utility.



The utility opens to the Settings tab page.

- Change the Network Name SSID to match your network.

Tip: As an alternative to typing in the SSID, you can use the drop-down list or the Networks tab to view the available wireless networks, and choose the one you want.

- Click **Apply** to activate the connection.
- You can also enter a profile name and click **Save Profile** to store the current settings.

Note: The status bar at the bottom of the utility reports the speed of your connection. 108 Mbps speed is only possible when your wireless network has a 108 Mbps access point such as in the NETGEAR WGT624 108 Mbps Wireless Firewall Router.

4 Finally, verify wireless network connectivity

Note: When the Windows XP wireless configuration utility is enabled, only the first two tab pages of the Netgear Smart Wireless Settings utility will appear.

To see the full NETGEAR utility, please refer to the *Reference Manual* on the *108 Mbps Wireless PCI Adapter Resource CD*.

- Verify that your connection information matches your wireless network.
- Verify connectivity to the Internet or network resources.

Note: If you are unable to connect, see the troubleshooting tips in the Basic Installation section of the *Reference Manual* on the *108 Mbps Wireless PCI Adapter Resource CD*.

Windows 2000, Me/98SE Basic Installation

1 First, install the WG311T software

- Power on your desktop PC and log into the Windows Operating System.
- Insert the *108 Mbps Wireless PCI Adapter Resource CD* for the WG311T into your CD-ROM drive. The CD main page shown below will load.




- Click the **Install Driver & Utility** link.
- Follow the InstallShield Wizard steps, and click **Finish** when done. If prompted to Restart the computer, choose **Shut Down**.

2 Next, install the WG311T Wireless PCI Adapter

- Shut down the PC and remove its power cord. Insert the WG311T Wireless PCI Adapter into an available PCI slot. Reconnect the power cord and reboot the computer.
- After a short delay, the Found New Hardware Wizard displays.

Note: If a Windows 2000 displays a Digital Signature Not Found warning, click **Yes** to continue the installation.

When the installation is complete, you will see the WG311T system tray icon  on the lower right portion of the Windows task bar.

3 Now, configure your WG311T

- Open the WG311T Smart Wireless Settings Utility by clicking on the icon  the Windows system tray. The utility opens to the Settings page.
- Change the Network Name SSID to match your network.

Tip: As an alternative to typing in the SSID, you can use the Network tab to view the available wireless networks, and double click on the desired network.



- Click **Apply** to activate the connection.
- You can also enter a profile name and click on the **Save Profile** button to store current settings.

Note: The status bar at the bottom of the utility reports the speed of your connection. 108 Mbps speed is only possible when your wireless network has a 108 Mbps access point such as in the NETGEAR WGT624 108 Mbps Wireless Firewall Router.

4 Finally, verify wireless network connectivity

Note: You can also use the Networks tab to verify the availability of wireless networks and their SSIDs. Please see the *Reference Manual* on the *108 Mbps Wireless PCI Adapter Resource CD*.

- Verify that your connection information matches your wireless network.
- Verify connectivity to the Internet or network resources.

Note: If you are unable to connect, see troubleshooting tips in the Basic Installation section of the *Reference Manual* on the *108 Mbps Wireless PCI Adapter Resource CD*.

Technical Support

PLEASE REFER TO THE SUPPORT INFORMATION CARD THAT SHIPPED WITH YOUR PRODUCT.

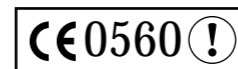
By registering your product at www.NETGEAR.com/register, we can provide you with faster expert technical support and timely notices of product and software upgrades.

NETGEAR, INC.

Support Information

Phone: 1-888-NETGEAR (For US & Canada only) - 24 x 7 phone support
See Support information card for other countries.

E-mail: support@NETGEAR.com (24 x 7 online support)
www.NETGEAR.com



Attention: This device may be used throughout the European community. Some restrictions may apply in France and Italy.



Mobile of end product

Federal Communication Commission Interference Statement

This equipment has been tested and found to comply with the limits for a Class B digital device, pursuant to Part 15 of the FCC Rules. These limits are designed to provide reasonable protection against harmful interference in a residential installation. This equipment generates, uses and can radiate radio frequency energy and, if not installed and used in accordance with the instructions, may cause harmful interference to radio communications. However, there is no guarantee that interference will not occur in a particular installation. If this equipment does cause harmful interference to radio or television reception, which can be determined by turning the equipment off and on, the user is encouraged to try to correct the interference by one of the following measures:

- Reorient or relocate the receiving antenna.
- Increase the separation between the equipment and receiver.
- Connect the equipment into an outlet on a circuit different from that to which the receiver is connected.
- Consult the dealer or an experienced radio/TV technician for help.

This device complies with Part 15 of the FCC Rules. Operation is subject to the following two conditions: (1) This device may not cause harmful interference, and (2) this device must accept any interference received, including interference that may cause undesired operation.

FCC Caution: Any changes or modifications not expressly approved by the party responsible for compliance could void the user's authority to operate this equipment.

IMPORTANT NOTE:

FCC Radiation Exposure Statement:

This equipment complies with FCC radiation exposure limits set forth for an uncontrolled environment. This equipment should be installed and operated with minimum distance 20cm between the radiator & your body.

This transmitter must not be co-located or operating in conjunction with any other antenna or transmitter.

Canada (IC) Warning Notice :

To prevent radio interference to the licensed service, this device is intended to be operated indoors and away from ☐ windows to provide maximum shielding. Equipment (or its transmit antenna) that is installed outdoors is subject to ☐ licensing.

Netgear Inc. declares that WG311T (FCC ID: PY3WG311T2)
is limited in CH1~CH11 by specified firmware controlled in U.S.A.