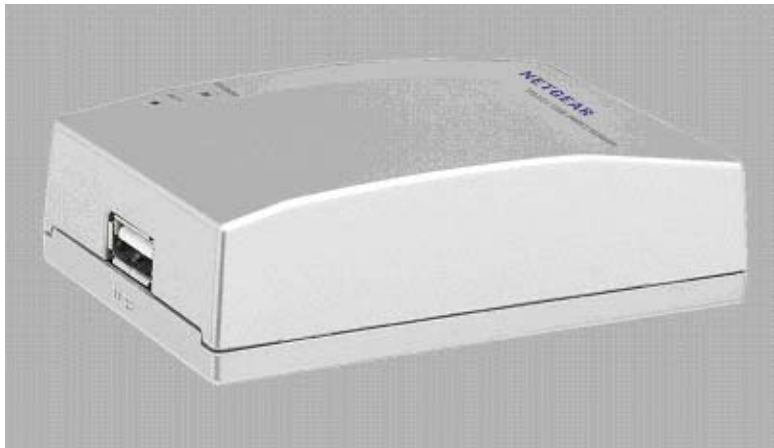


# NETGEAR USB Multifunction Printer Server PS121v2 User Manual



## NETGEAR®

**NETGEAR, Inc.**  
4500 Great America Parkway  
Santa Clara, CA 95054 USA

202-10211-02  
April 2007

## Technical Support

Please refer to the support information card that shipped with your product. By registering your product at [www.netgear.com/register](http://www.netgear.com/register), we can provide you with faster expert technical support and timely notices of product and software upgrades.

NETGEAR, INC. Support Information

Phone: 1-888-NETGEAR, for US & Canada only. For other countries, see your Support information card.

E-mail: [support@netgear.com](mailto:support@netgear.com)

Website: [www.netgear.com](http://www.netgear.com)

## Statement of Conditions

In the interest of improving internal design, operational function, and/or reliability, NETGEAR reserves the right to make changes to the products described in this document without notice.

NETGEAR does not assume any liability that may occur due to the use or application of the product(s) or circuit layout(s) described herein.

© 2007 NETGEAR, Inc. NETGEAR, the NETGEAR logo, The Connect with Innovation trademark is a registered trademark of NETGEAR, Inc. in the United States and/or other countries. Microsoft and Windows are registered trademarks of Microsoft Corporation in the United States and/or other countries. Other brand and product names are trademarks or registered trademarks of their respective holders. Information is subject to change without notice. All rights reserved.

April 2007

## Certificate of the Manufacturer/Importer

It is hereby certified that the PS121v2 USB Multifunction Print Server has been suppressed in accordance with the conditions set out in the BMPT- AmtsblVfg 243/1991 and Vfg 46/1992. The operation of some equipment (for example, test transmitters) in accordance with the regulations may, however, be subject to certain restrictions. Please refer to the notes in the operating instructions.

Federal Office for Telecommunications Approvals has been notified of the placing of this equipment on the market and has been granted the right to test the series for compliance with the regulations.

## EN 55 022 Declaration of Conformance

This is to certify that the PS121v2 USB Multifunction Print Server is shielded against the generation of radio interference in accordance with the application of Council Directive 89/336/EEC, Article 4a. Conformity is declared by the application of EN 55 022

Class B (CISPR 22).

## Bestätigung des Herstellers/Importeurs

Es wird hiermit bestätigt, daß das PS121v2 USB Multifunction Print Server gemäß der im BMPT-AmtsblVfg 243/1991 und Vfg 46/1992 aufgeführten Bestimmungen entstört ist. Das vorschriftsmäßige Betreiben einiger Geräte (z.B.

Testsender) kann jedoch gewissen Beschränkungen unterliegen. Lesen Sie dazu bitte die Anmerkungen in der Betriebsanleitung.

Das Bundesamt für Zulassungen in der Telekommunikation wurde davon unterrichtet, daß dieses Gerät auf den Markt gebracht wurde und es ist berechtigt, die Serie auf die Erfüllung der Vorschriften hin zu überprüfen.

### **Certificate of the Manufacturer/Importer**

It is hereby certified that the PS121v2 USB Multifunction Print Server has been suppressed in accordance with the conditions set out in the BMPT-AmtsblVfg 243/1991 and Vfg 46/1992. The operation of some equipment (for example, test transmitters) in accordance with the regulations may, however, be subject to certain restrictions. Please refer to the notes in the operating instructions.

Federal Office for Telecommunications Approvals has been notified of the placing of this equipment on the market and has been granted the right to test the series for compliance with the regulations.

Compliance with the applicable regulations is dependent upon the use of shielded cables. It is the responsibility of the user to procure the appropriate cables.



---

# Contents

## NETGEAR USB Multifunction Printer Server PS121v2 User Manual

### About This Manual

Conventions, Formats and Scope .....	vii
How to Use This Manual .....	viii
How to Print this Manual .....	viii

### Chapter 1

#### Getting Started

What Is in the Box .....	1-2
Hardware Description .....	1-3
LED Indicators .....	1-3
USB Port .....	1-4
Diagnostic/Reset Push Button .....	1-4
Observe These Precautions .....	1-5

### Chapter 2

#### Installation and Setup

Preparing for Installation .....	2-1
Overview .....	2-2
Multi-Function Printers .....	2-2
Standard Printing Operations .....	2-2
Installation .....	2-3
Install the Print Server and Set up One PC .....	2-3
Reserve the Print Server's IP Address on Your Router .....	2-5
Set Up Each Additional PC to Use the PS121v2 .....	2-5
Installation for TCP/IP LPR Printing .....	2-6
Connect the Print Server .....	2-6
Adding a Printer with Windows Vista .....	2-8
Adding a Printer with Windows XP or Windows 2000 .....	2-12
Setting up a Macintosh Computer .....	2-16

---

## **Chapter 3**

### **Managing the Print Server**

Reserving a Multi-Function Printer to Scan, Copy, or Fax .....	3-1
Releasing the Print Server .....	3-3
Upgrading the Print Server Software .....	3-3
Viewing the Printer Port Status .....	3-4
Viewing and Updating Settings with the Smart Wizard .....	3-5
Viewing or Updating Settings with Your Web Browser .....	3-6
Changing the Password .....	3-8

## **Chapter 4**

### **Troubleshooting**

Basic Functioning .....	4-1
The print server has no power .....	4-1
No lights are lit on the print server .....	4-2
Printing Errors .....	4-2
The printer is printing "garbage" characters .....	4-2
Windows error message appears when printing .....	4-2
The print server is not found .....	4-2
Nothing is printing .....	4-2
Checking the Current Status of the Printer .....	4-3

## **Appendix A**

### **Default Configuration Settings and Technical Specifications**

Default Configuration Settings .....	A-1
Technical Specifications .....	A-1

## **Appendix B**

### **Related Documents**

# About This Manual

This manual describes how to install, configure and troubleshoot the NETGEAR® PS121v2 USB Multifunction Print Server. The information in this manual is intended for readers with intermediate computer and Internet skills.

## Conventions, Formats and Scope


---


The conventions, formats, and scope of this manual are described in the following paragraphs:


- **Typographical Conventions.** This manual uses the following typographical conventions::

<i>Italics</i>	Emphasis, books, CDs, URL names
<b>Bold</b>	User input

- **Formats.** This manual uses the following formats to highlight special messages:

	<b>Note:</b> This format is used to highlight information of importance or special interest.
---	--

	<b>Tip:</b> This format is used to highlight a procedure that will save time or resources.
---	--

	<b>Warning:</b> Ignoring this type of note may result in a malfunction or damage to the equipment.
---	--

- **Scope.** This manual is written for the USB Multifunction Print Server according to these specifications:

Product Version	PS121v2 USB Multifunction Print Server
Manual Publication Date	April 2007

For more information about network, Internet, firewall, and VPN technologies, see the links to the NETGEAR website in [Appendix B, “Related Documents”](#).








**Note:** Product updates are available on the NETGEAR, Inc. website at <http://kbserver.netgear.com/products/PS121v2.asp>.

---

## How to Use This Manual

---

The HTML version of this manual includes the following:

- Buttons,  and , for browsing forwards or backwards through the manual one page at a time
- A  button that displays the table of contents and an  button. Double-click on a link in the table of contents or index to navigate directly to where the topic is described in the manual.
- A  button to access the full NETGEAR, Inc. online knowledge base for the product model.
- Links to PDF versions of the full manual and individual chapters.

---

## How to Print this Manual

---

To print this manual you can choose one of the following several options, according to your needs.

- **Printing a Page in the HTML View.**

Each page in the HTML version of the manual is dedicated to a major topic. Use the *Print* button on the browser toolbar to print the page contents.

- **Printing a Chapter.**

Use the *PDF of This Chapter* link at the top left of any page.

- Click the *PDF of This Chapter* link at the top right of any page in the chapter you want to print. The PDF version of the chapter you were viewing opens in a browser window.
- Your computer must have the free Adobe Acrobat reader installed in order to view and print PDF files. The Acrobat reader is available on the Adobe Web site at <http://www.adobe.com>.

- Click the print icon in the upper left of the window.

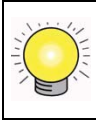


**Tip:** If your printer supports printing two pages on a single sheet of paper, you can save paper and printer ink by selecting this feature.

- **Printing the Full Manual.**

Use the *Complete PDF Manual* link at the top left of any page.

- Click the Complete PDF Manual link at the top left of any page in the manual. The PDF version of the complete manual opens in a browser window.
- Click the print icon in the upper left of the window.



**Tip:** If your printer supports printing two pages on a single sheet of paper, you can save paper and printer ink by selecting this feature.



# Chapter 1

## Getting Started

Congratulations on your purchase of the PS121v2 USB Multifunction Print Server. The print server allows you to share a printer without sharing your PC.

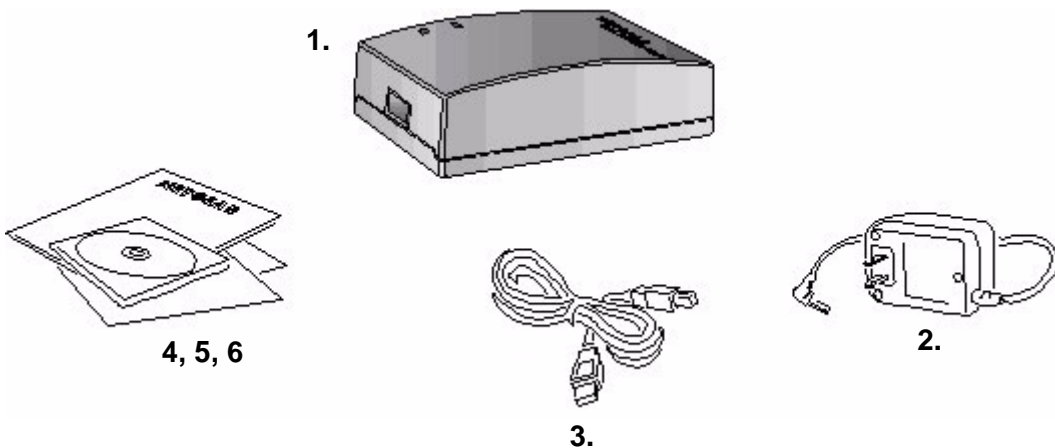
- This chapter describes the package contents, appearance of the PS121v2 USB Multifunction Print Server, and how to prepare for installation.
- For quick installation and setup, see the *PS121v2 USB Multifunction Print Server Installation Guide*, which describes the installation and use of the PS121v2 for operation with a Microsoft Vista, Windows XP, Windows 2000, Windows Me, or Windows 98SE 2nd edition system.
- For information about product features and compatible NETGEAR products, see the NETGEAR website at <http://www.netgear.com>.
- Product updates are available on the NETGEAR, Inc. website at <http://kbserver.netgear.com/products/PS121.asp>.
- For a list of USB printers that have been tested with NETGEAR print servers, see the Support section of the NETGEAR website.



**Note:** Other USB printers may also be compatible, or partially compatible, but NETGEAR has not tested them.

## What Is in the Box

---



**Figure 1-1**

The product package should contain the following items:

- USB Multifunction Print Server
- Power adapter
- USB cable
- *Resource CD*, including:
  - Driver and System Utility Software
  - Documentation including the installation guide and the *NETGEAR USB Multifunction Printer Server PS121v2 User Manual* (this document)
- *PS121v2 USB Multifunction Print Server Installation Guide*
- Warranty & Registration card
- Support information card

If any of the parts are incorrect, missing, or damaged, contact your NETGEAR dealer. Keep the carton, including the original packing materials, in case you need to return the product for repair.

To qualify for product updates and product warranty registrations, fill out the registration information within 30 days of purchase. For priority service, register online on the NETGEAR Web page at: <http://www.NETGEAR.com>

You can also fill out and return the Warranty & Registration Card that is included in your product package.

## Hardware Description

The PS121v2 USB Multifunction Print Server LEDs indicate the status of the server and the Ethernet traffic. It has one 10/100 Mbps network port. The port operates in 10/100 Mbps when connected to a 10/100Mbps Ethernet network. It has one USB port. It has a power adapter receptacle that accepts a 12V 1A DC power adapter. It has a diagnostic/reset button.

### LED Indicators

As illustrated in the figure below, the USB Multifunction Print Server has 2 LEDs.

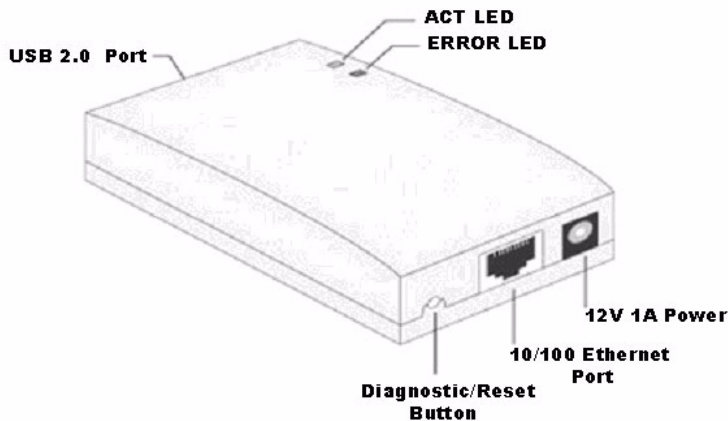


Figure 1-2

See the table below for a description of the LED indicator lights:

Table 1-1. LED Descriptions

ACT Status LED (Green)	ERROR LED (Red)	Description
Off	Off	No power
On	Off	Power on, idle normal operation
Flashing	Off	Normal operation transmitting or receiving data from the network.
On	On	No USB printer attached.
Flashing	Flashing	(LEDs flash in turn) Firmware upgrade in progress

## USB Port

The USB port of the PS121v2 USB Multifunction Print Server is a standard USB connector.



Figure 1-3



**Note:** The USB Multifunction Print Server does not support printers using parallel connectors. If your printer uses a parallel connector, you should use one of the other NETGEAR Print Servers such as the Model PS101 Mini Print Server.

## Diagnostic/Reset Push Button

This button has 2 functions:

- Restore the factory default settings
- Print a test page containing all current settings



Figure 1-4

The button is recessed. Use a pin or paper clip to press it.

## To Restore the Factory Default Settings



**Note:** The factory default setting for the Print Server IP Address is DHCP enabled (provided automatically by a router or access point). During installation you must set a Static IP address in order for the Print Server to perform properly.

1. Unplug the Print Server from its power source.
2. Press and hold the diagnostic button. While pressing the button, apply power to the Print Server and continue pressing the button until the ACT and ERROR LEDs flash alternately.  
The default factory settings are restored.

## To Generate a Diagnostic Printout



**Note:** PostScript printers are unable to print this page. If you have a PostScript printer, the test page will not be printed.

1. Ensure that both the Print Server and the attached printer are on.
2. Press the diagnostic button, and hold it in until the ERROR LED flashes slowly.  
The test page, containing the current settings, will print.

## Observe These Precautions

---

For your own safety, and to protect your Print Server, please observe the following precautions.

- Use only the correct 12V 1A power adapter. Do not pinch, crimp or otherwise damage the power cord. If exposed to foot traffic, ensure that the cable is properly shielded and does not pose a tripping hazard.
- Unplug the print server from its power source before cleaning. Use only a slightly dampened cloth for cleaning. Do not use liquid or aerosol cleaners.
- Avoid using this product near water. Exposure to water poses an electric-shock hazard.



# Chapter 2

## Installation and Setup

This chapter describes how to install your PS121v2 USB Multifunction Print Server and set up basic connectivity on your Local Area Network (LAN). Operation is covered in [Chapter 3, “Managing the Print Server”](#) in this manual.

### Preparing for Installation

---

Assure that the following are available:

- You have a working Ethernet network running TCP/IP with at least one PC running Microsoft Vista, Windows XP, Windows 2000, Windows 98SE, or Windows Me.
- You have one unused port on a router.
- You have a printer with a USB port.



**Note:** The PS121v2 USB Multifunction Print Server does not support printers using parallel connectors. If your printer uses a parallel connector, you should use one of the other NETGEAR Print Servers such as the Model PS101 Mini Print Server.

- Gather your existing network settings such as the TCP/IP addresses and networking protocols in use. You may need to have your printer driver software handy. For most popular printers, Vista and Windows already have the printer driver software available.



**Tip:** Directly connect the printer that you will use to a computer and verify it is working properly before connecting it to the USB Multifunction Print Server

## Overview

When installation is complete, your network configuration will look similar to the following:

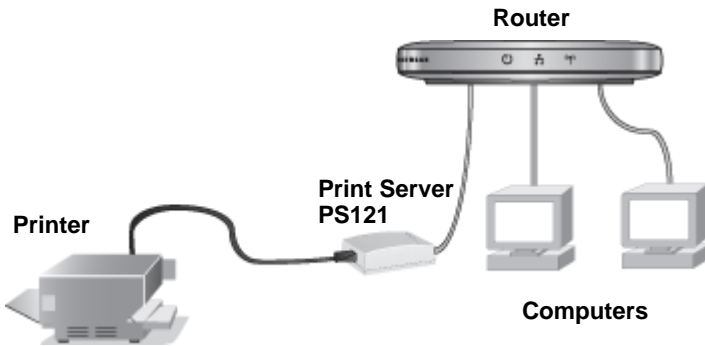


Figure 2-1

## Multi-Function Printers

The PS121v2 USB Multifunction Print Server works with multi-function printers and PCs running Microsoft Vista, Windows XP, or Windows 2000.

- Before you send a scan, copy, or fax to the printer, you must reserve the printer for exclusive use by your computer.
- After you have finished using the printer, release it so that it is available to other computers in your network.

For more information about multi-function printers, see [“Reserving a Multi-Function Printer to Scan, Copy, or Fax” on page 3-1](#).

The PS121v2 USB Multifunction Print Server also works as a standard print server.

## Standard Printing Operations

Print jobs can be sent concurrently from different computers on your network. This option is available for networks with computers with these operating systems:

- Microsoft Vista, Windows XP, Windows 2000, Windows 98 SE, or Windows ME
- Macintosh
- Microsoft Vista, Windows XP and Windows 2000 using LPR or raw printing.

## Installation

First, install and set up the print server and a single PC. Then set up additional PCs to work with the print server.



**Note:** For TCP/IP LPR printer installation, see [“Installation for TCP/IP LPR Printing”](#) on page 2-6

### Install the Print Server and Set up One PC

1. Power on your computer, let the operating system boot up completely, and log in as needed.
2. Insert the *Resource CD* for the PS121v2 into your CD drive. The CD main page opens.
3. Click Install and Set Up the Print Server with This PC to start the installation wizard.

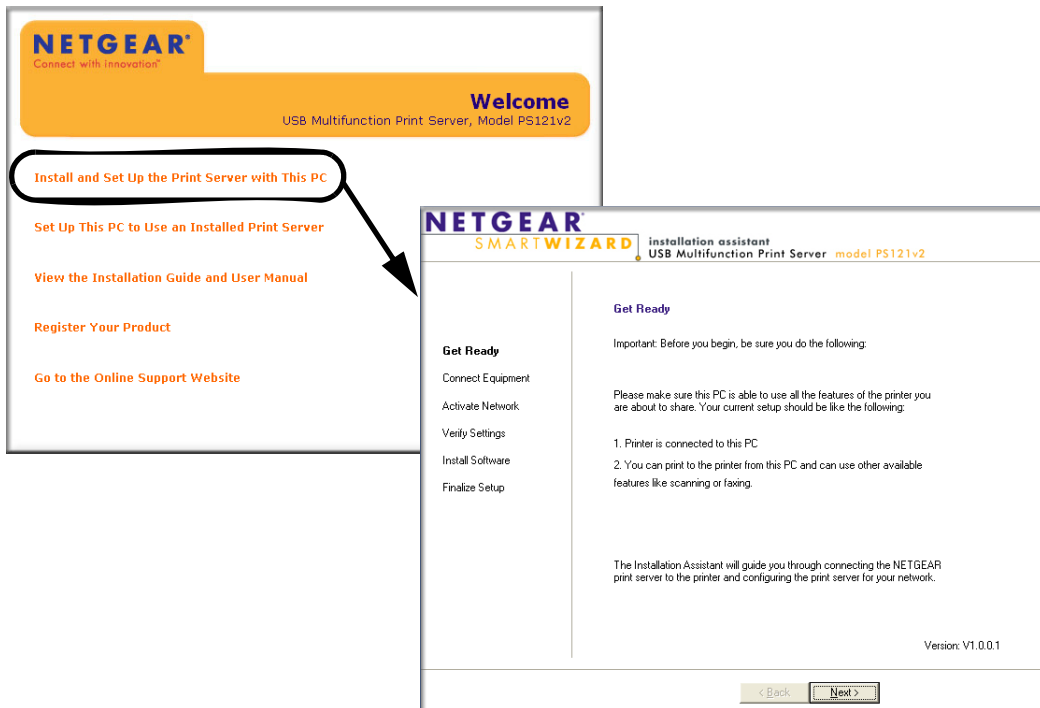
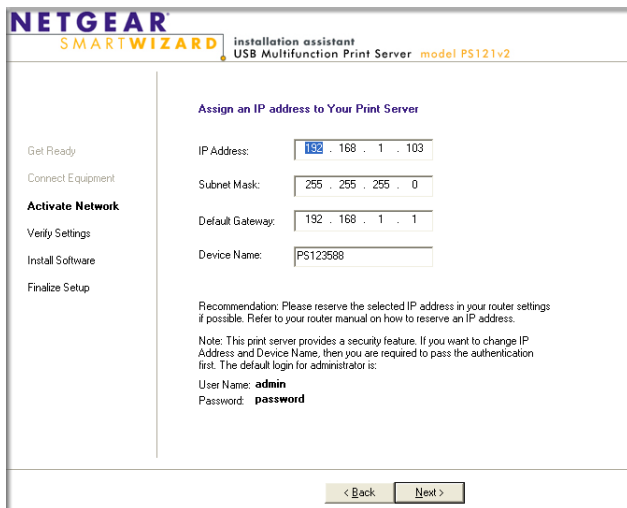


Figure 2-2

- Simply follow the installation instructions to connect your PS121v2 print server into your network.


When you complete the Connect Equipment page, the installation assistant searches your network for the PS121v2 print server. If it cannot find your print server, check the network connections and the print server's status LEDs.


- Click Next to proceed to the Activate Network page where the IP address settings and device name are displayed.



**Figure 2-3**

The settings recommended by the installation assistant usually work well.

	<p><b>Note:</b> Take a note of the IP address assigned to the print server. You will need to reserve this address in your router to be permanently assigned to the print server in order to avoid potential IP address conflicts.</p>
---	---

- Click Next to continue. If you are prompted for a password, type **password** and then click OK to continue to the Verify Settings page.
- When you reach the Finalize Setup page, click Print Test Page to confirm that the installation of the print server was successful.
- Click Next and then click Finish to close the installation assistant.
- Check that the icon  for the Smart Wizard is installed in the system tray. If it is not, run the SmartWizard program in the ps121 program group to place it there.

## Reserve the Print Server's IP Address on Your Router

The DHCP server on your router assigns new IP addresses to its client devices periodically. The print server's IP address should be reserved so that it will never change. Otherwise, if another client requests a new IP address before the print server connects to the router, the print server's IP address will be assigned to the other client, resulting in an IP address conflict.

To reserve the print server's IP address in your router, you will need some or all of the following information about the print server:

- IP address
- MAC address
- Device name

The device name and MAC address are printed on the label on the underside of the print server. The above information can also be obtained by running the SmartWizard program or by connecting to the print server with your Web browser.

If you have a NETGEAR router, use the following instructions to reserve the IP address for the print server in your router. Otherwise, refer to your router manual.

### To permanently reserve the print server's IP address in a NETGEAR router:

1. Open your web browser and enter the URL <http://www.routerlogin.net> in the address bar or enter the router's IP address. This address is printed on the label on the bottom or the back of the router and is typically either <http://192.168.0.1> or <http://192.168.1.1>.
2. In the Advanced section of the main menu, click LAN IP Setup.

The Address Reservation table is displayed at the bottom of the LAN IP Setup window.

3. Click Add to open the Address Reservation window.
4. Enter the IP address, MAC address, and device name and then click Add.

## Set Up Each Additional PC to Use the PS121v2

After you have set up the PS121v2 in your network and connected it to one computer, you need to set up each additional computer to use the PS121v2. You do this by using the *Resource CD*.



**Warning:** For Windows 98SE and Windows ME, print manager software from Epson and from some HP printers can block communications between your PC and the PS121v2. Uninstall such print manager software before proceeding with the Add Printer Port Wizard.

1. Power on your computer, let the operating system boot up completely, and log in as needed.
2. Insert the *Resource CD* into your CD drive. The CD main page opens.

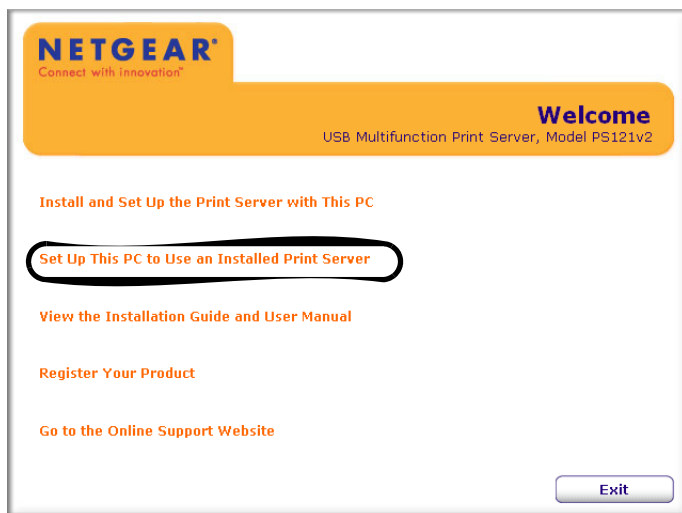


Figure 2-4

3. Click Set Up the PC to Use an Installed Print Server to install the SmartWizard, which will allow you to print via the print server.

Your USB Multifunction Print Server is now ready to use. For instructions on using the multifunction feature, refer to [“Reserving a Multi-Function Printer to Scan, Copy, or Fax”](#) on page 3-1.

## Installation for TCP/IP LPR Printing

---

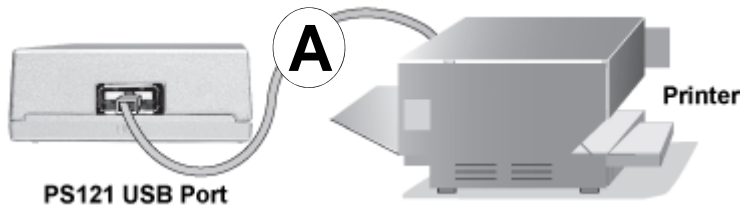
First, connect the print server. Then follow the instructions for the Windows Add Printer Wizard for your operating system.

### Connect the Print Server

To use TCP/IP LPR printing:

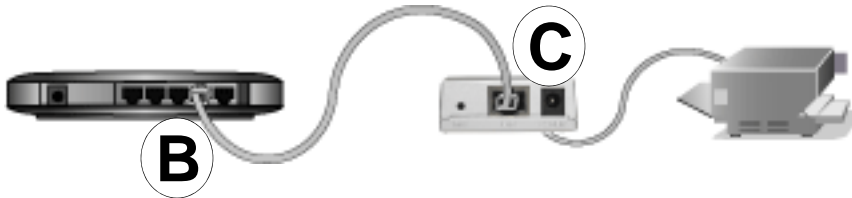
1. Connect your Print Server to your network configuration.

- a. Connect the supplied USB cable (A) from the print server to the printer.



**Figure 2-5**

- b. Insert one end (B) of an Ethernet cable into an open Ethernet LAN port in your access point or router and insert the other end (C) into the Ethernet port on the print server.



**Figure 2-6**

- c. Turn on your printer.
- d. Connect the 12 V power adapter to the print server and plug it into a power source.
- e. Check the PS121v2 status lights and verify the following:
- **ERROR** light: When the print server is powered on, the ERROR light will turn red briefly, and then turn off.
  - **ACT** light: When the print server is powered on, it should turn solid green.
- f. Verify that your computers are connected to LAN ports on your router, as shown in [Figure 2-1 on page 2-2](#).

## Adding a Printer with Windows Vista

1. From the Windows Start menu of a computer connected to the same network as the USB Multifunction Print Server, click Settings then click Printers.
2. Click Add a Printer, select Add a local printer, and then click Next.

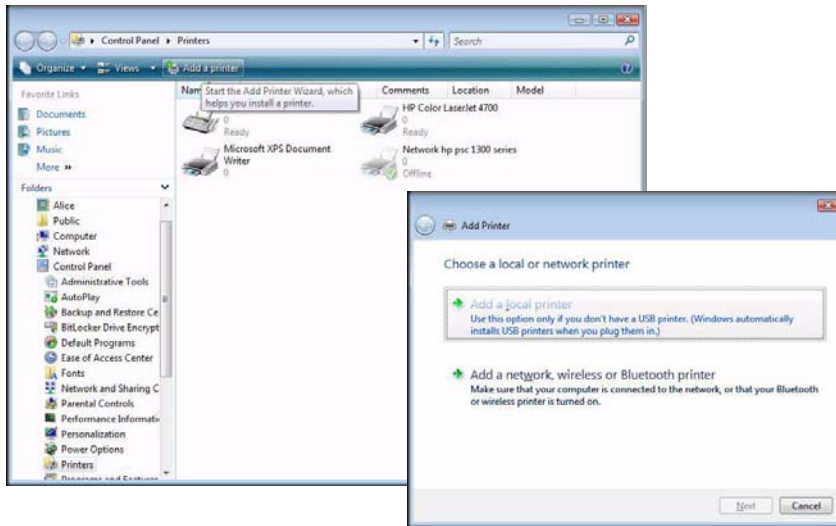


Figure 2-7

3. Select the Create a new port radio button. From the Type of port drop-down list, select Standard TCP/IP Port, and then click Next.

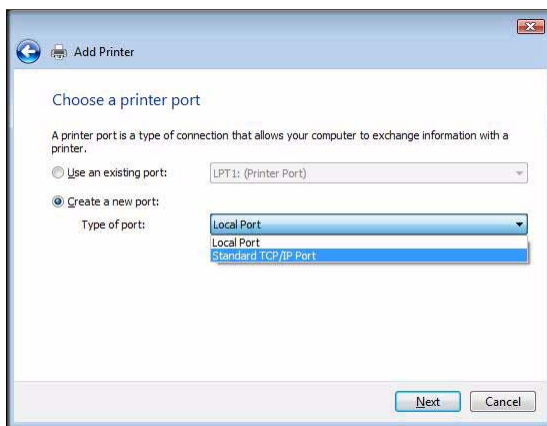
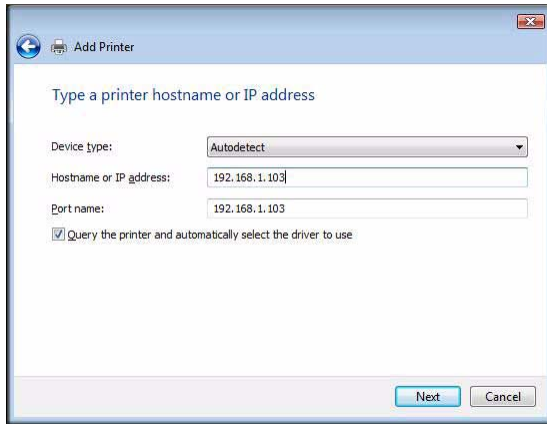


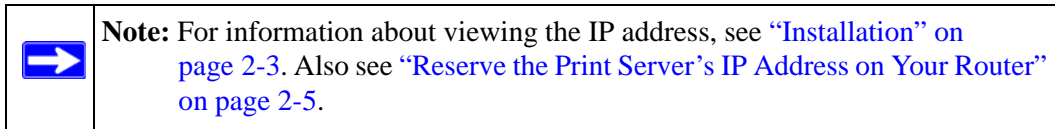
Figure 2-8

The following screen opens:

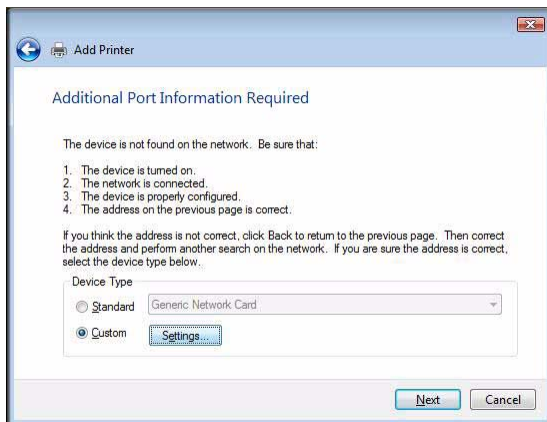


**Figure 2-9**

4. Enter the IP address of the USB Multifunction Print Server in the Hostname or IP address box. The Wizard will fill in the Port name box automatically. Click Next.

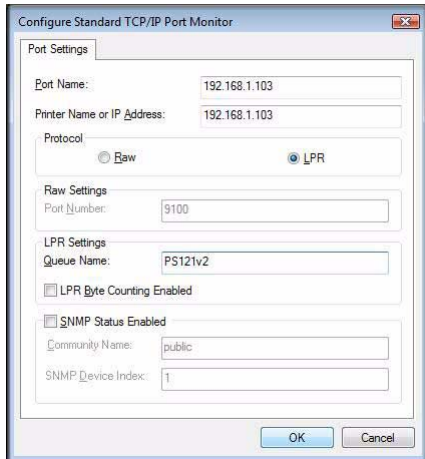


When the wizard contacts the printer, click Next. The wizard detects the port to use for the USB Multifunction Print Server, and then displays this screen:



**Figure 2-10**

5. Select Custom, and then click Settings. The Configure Standard TCP/IP Port Monitor screen opens.
6. Configure the TCP/IP Port Monitor.

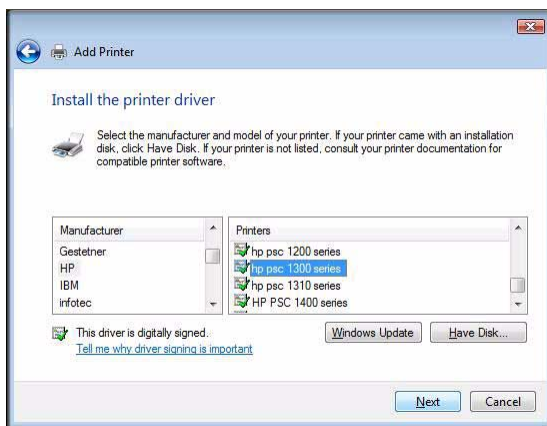


**Figure 2-11**

For Protocol, select LPR, and then enter **PS121v2** as the Queue Name in the LPR Settings. Click OK to close this screen.


7. When the Additional Port Information required screen appears, click Next.

The wizard detects the driver, and then displays the Install the printer driver screen:



**Figure 2-12**

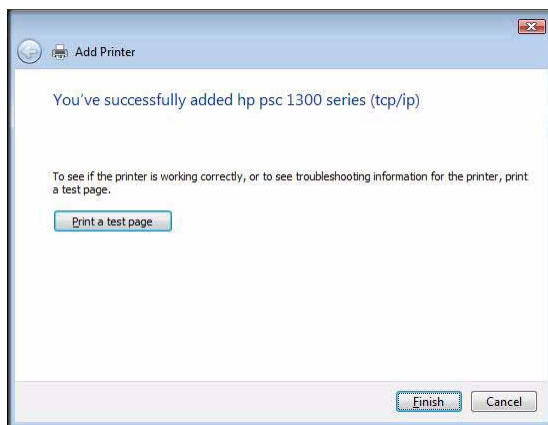
- Scroll and select your printer manufacturer, and your printer model, and then click Next.

	<p><b>Note:</b> If you do not see your make and model of printer in the lists, and you are connected to the Internet, you can click the Windows Update button to download additional printer software from the Microsoft website, or you can click the Have Disk button to install the printer software from a disk you have.</p>
---	---

If the printer software is already installed on this computer, the Add Printer Wizard will inform you and let you keep the existing driver.

- The Name Your Printer screen prompts for a descriptive name and whether you want it to be the default or not. When entering a name, choose a descriptive name that identifies this printer as a TCP/IP printer. Enter your choices and then click Next to proceed.

Upon completion of the Add Printer Wizard, you are prompted to print a test page.



**Figure 2-13**

- Click Print a test page, and then click Finish.
- Check the printer attached to the USB Multifunction Print Server to verify that the test page printed successfully. If you are unable to print a test page, see [Chapter 4, “Troubleshooting”](#)

## Adding a Printer with Windows XP or Windows 2000

1. Run the Windows Add Printer Wizard as follows:

- a. From the Windows Start menu of a computer connected to the PS121v2, click Printers and Faxes.
- b. Click Add a printer and then Next to proceed.

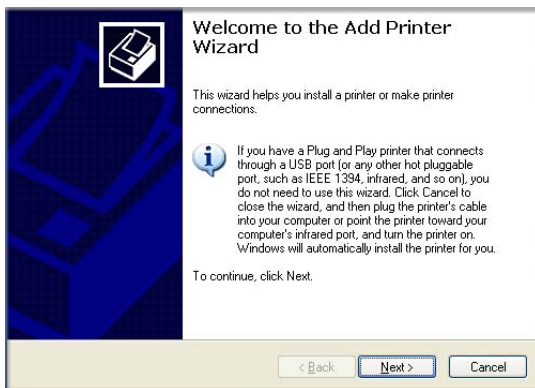


Figure 2-14

c. Choose the Local printer attached to this computer option.

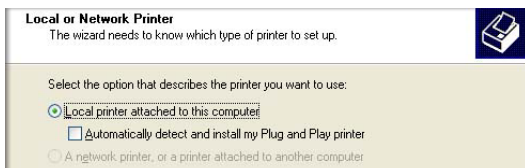


Figure 2-15

- d. Click Next to proceed.
- e. On the Select a Printer Port screen, be sure to choose the Create a new port: option. From the “Type of port” drop-down list, select Standard TCP/IP Port.

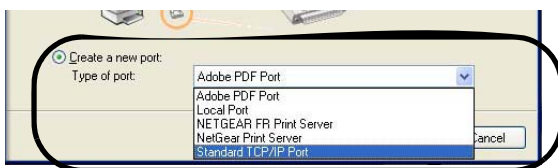
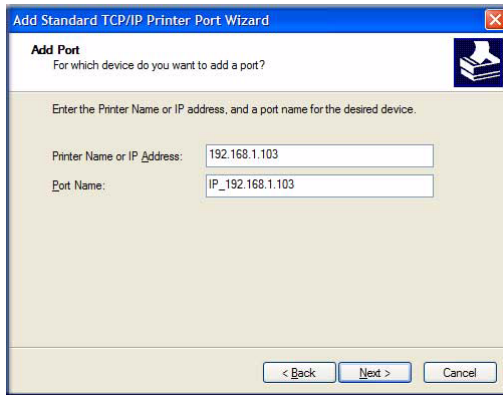



Figure 2-16

The Add Standard TCP/IP Printer Port Wizard opens. Click Next to open the Add Port screen shown below:



**Figure 2-17**

- f. Click Next to proceed. Fill in the IP address you will use for the printer in the Add Port screen.

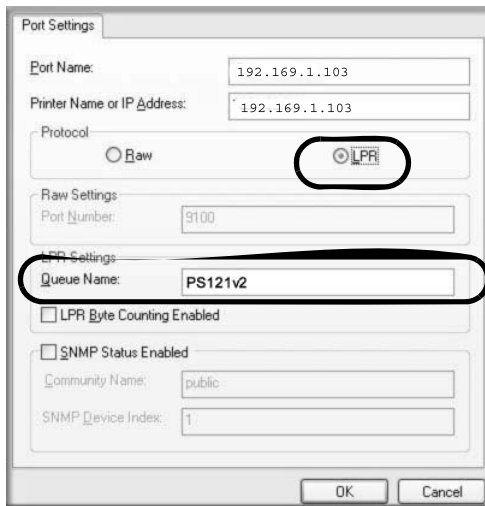
	<b>Note:</b> For information about viewing the IP address, see <a href="#">“Installation” on page 2-3</a> . Also see <a href="#">“Reserve the Print Server’s IP Address on Your Router” on page 2-5</a> .
---	---

- g. Click Finish to proceed. The Add Standard TCP/IP Printer Port Wizard opens.



**Figure 2-18**

- h. From the Add Port screen, enter the IP address of the print server in the IP Address field. Click Next to proceed.
- i. In the Device Type section of the Additional Port Information Required screen, select Custom. and then click Settings.
- j. The Port Settings tab page opens. In the Protocol section, select the LPR radio button, and enter **PS121v2** as the Queue Name in the LPR Settings section. Click OK to close this tab.



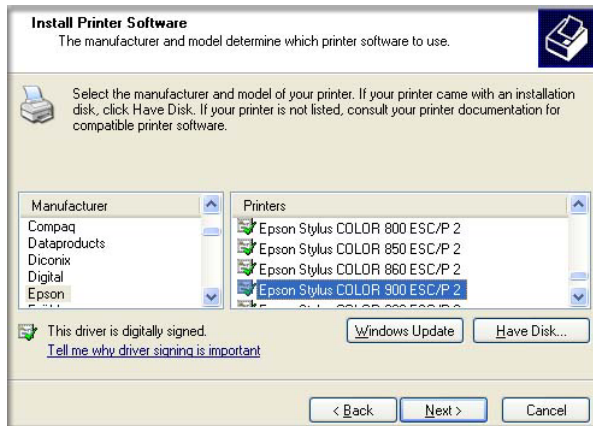
**Figure 2-19**

- k. Click Next to proceed.

The Add Printer Wizard prompts you to install the software for the printer that you attached to the USB Multifunction Print Server.

- 2. Complete the Add Standard TCP/IP Printer Port Wizard as follows:

- a. From the Install Printer Software screen, find the manufacturer and model of the printer you connected to the USB port on the print server.



**Figure 2-20**

If you do not see your make and model of printer in the lists, and you are connected to the Internet, you can click the Windows Update button to download additional printer software from the Microsoft website, or you can click the Have Disk button to install the printer software from a disk you have.

- b. Click Next to proceed.

If the printer software is already installed on this computer, the Add Printer Wizard will inform you and let you keep the existing driver.

- c. The Name Your Printer screen prompts for a descriptive name and whether you want it to be the default or not. Enter your choices and then click Next to proceed.
- d. On the Printer Sharing screen, accept the “Do not share this printer” option and click Next.

- e. Click Next to proceed. The following screen opens:



**Figure 2-21**

- f. Click Finish.
3. Print a test page to verify successful printing on your network.
- Upon completion of the Add Printer Wizard, you will be prompted to print a test page.
  - Check the printer attached to the USB Multifunction Print Server to verify that the test page printed successfully.

If you are unable to print a test page, see [Chapter 4, “Troubleshooting”](#)

## Setting up a Macintosh Computer

Macintosh computers can connect to a TCP/IP network printer using the Line Printer Remote (LPR) protocol. LPR printing can be set up on any Macintosh that has Desktop Printing installed or available. Desktop Printing is supported on MacOS versions beginning from 8.1. LaserWriter8 version 8.5.1 or higher is also required.

To configure the Macintosh to use the print server, follow these steps:

- From the Apple Extras folder, under Apple LaserWriter Software, launch the Desktop Printing Utility. A new window titled New Desktop Printer appears.
- Select **LaserWriter 8** in the “With” drop-down menu.
- Select **Printer (LPR)** and click **OK**. A new window called Untitled 1 will open.
- If the PostScript Printer Description does not match your printer, click **Change...** and select your actual printer.

5. If your printer model does not appear, click the **Generic** button.
6. Click **OK** to return to the Untitled 1 window.
7. In the LPR Printer Selection box, click Change...
8. In the Printer Address field, type the IP address of the USB Multifunction Print Server.  
You can leave the Queue Name blank.
9. Click **Verify** to make sure your computer can see the printer. You should see the IP address displayed above the button. If no IP Address appears, check that you have correctly typed the queue name or IP Address.
10. Click **OK** to return to the Untitled 1 window.
11. At the bottom of the Untitled 1 dialog box, click **Create....**
12. When prompted, rename the printer with a descriptive name and click **Save**.  
A printer icon should now appear on your desktop.
13. Quit the Desktop Printer Utility.



# Chapter 3

## Managing the Print Server

This chapter describes features that allow you to manage the USB Multifunction Print Server. These operations are:

- Reserving a multi-function printer for temporary exclusive use by one PC (Microsoft Vista, Windows XP or Windows 2000 only)
- Upgrading the print server firmware and/or SmartWizard from a Windows PC
- Viewing the printer port status
- Viewing and updating settings
- Change the password

### **Reserving a Multi-Function Printer to Scan, Copy, or Fax**

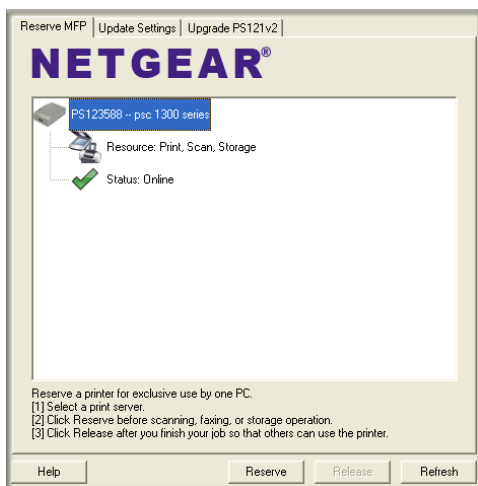
---

You can temporarily reserve a multi-function printer for one PC so that you can scan, copy, or fax. The PC must be running Microsoft Vista, Windows XP, or Windows 2000.

When the print server is reserved, print operations from other computers are blocked. If you do not use the printer within 5 minutes the print server is automatically released so that it is available for other PCs.

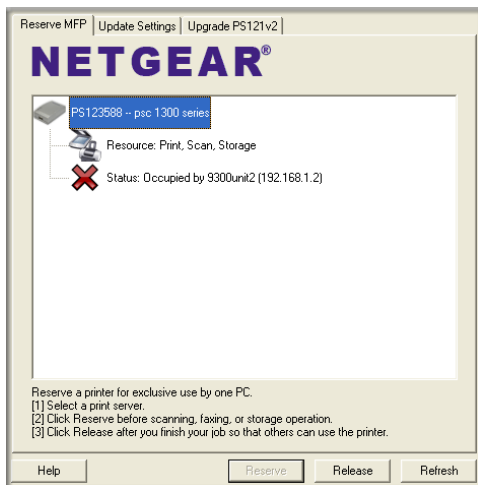
To reserve the print server:

1. Click the SmartWizard icon, , in the system tray to open the wizard.



**Figure 3-1**

2. Click Reserve. The status icon changes to a red cross, indicating that the print server is now reserved.



**Figure 3-2**

## Releasing the Print Server

A printer that is reserved will automatically be released if it remains idle for 5 minutes. You can also release it by clicking the Release button in the Reserve MFP window shown in [Figure 3-2](#). The status icon changes back to the green check mark shown in [Figure 3-1](#).




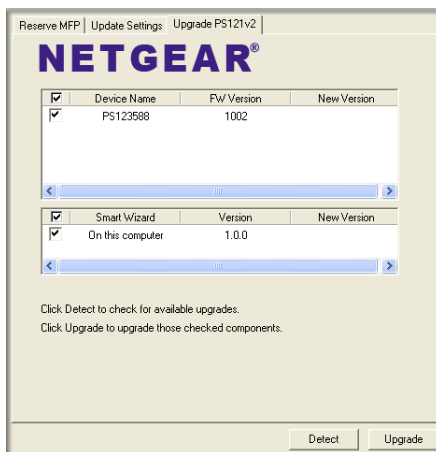
**Note:** If you have more than one PS121v2 print server on your network, your computer's operating system can only connect to the print server selected in the Smart Wizard. If you want to connect to another print server, release the print server you reserved and select the device you want from the displayed list.

## Upgrading the Print Server Software

The Smart Wizard lets you check whether there is an update to the print server firmware or Smart Wizard and, if so, lets you upgrade either or both.

To check for updates:

1. Click the SmartWizard icon, , in the system tray and click the Upgrade PS121v2 tab.



**Figure 3-3**

2. Select the items you want to detect and click Detect. If a new version is available, it will be displayed in the New Version column.
3. If there is an upgrade shown in the New Version column, click Upgrade.

## Viewing the Printer Port Status

---

To view the port status:

1. Open your Web browser and type in the IP address of the print server in the browser's Address text box.

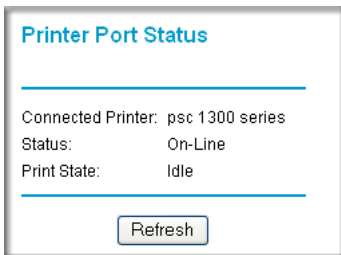
The browser displays a pop-up window prompting you for the user name and password.



**Figure 3-4**

2. For the user name, type **admin**. If you have assigned a password enter it in the password box. If you have not changed the password, type the default value of **password**.

The status screen is displayed as follows:




**Figure 3-5**

The status will indicate On-line, Off-line, or Out of paper.

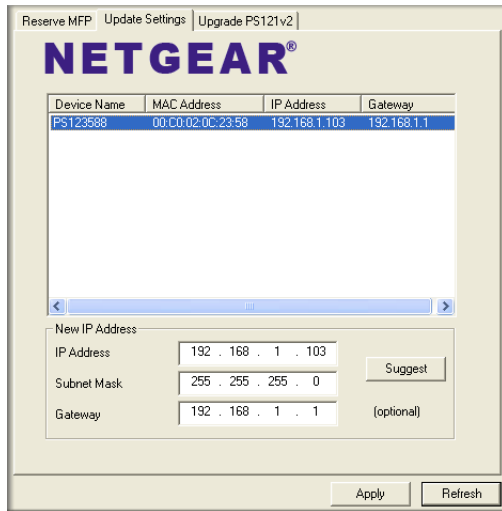
The print state will show either Idle or Printing.

## Viewing and Updating Settings with the Smart Wizard

You can use the Smart Wizard to view and update settings for PCs running Vista or Windows.

1. Click the Smart Wizard icon, , in the system tray and click the Update Settings tab.

Each PS121v2 print server in your local network are listed, displaying the device name, MAC address, IP address, and gateway address.



**Figure 3-6**

2. To edit the IP Address settings for print server:
  - a. If the device is not highlighted with white text on a blue background, click on the entry to select and highlight it.

The IP settings are displayed in the three text boxes in the New IP Address group.

- b. Edit the IP settings and then click **Apply**.

## Viewing or Updating Settings with Your Web Browser

---

You can use your Web browser to connect to the print server's browser-based interface. You must know the IP address for the print server.

To view or edit the IP settings:

1. Open your Web browser and type in the IP address of the print server in the browser's Address text box.

The browser displays a pop-up window prompting you for the user name and password.



**Figure 3-7**

2. For the user name, type **admin**. If you have assigned a password enter it in the password box. If you have not changed the password, type the default value of **password**.
3. Click Server Status in the main menu.

The browser displays the PS121v2 name and firmware version, and its IP settings.

**Server Status**

---

**Firmware Version** V1.0.06  
**Server Name** PS123588

---

**LAN Port**  
**IP Address** 192.168.1.103  
**IP Subnet Mask** 255.255.255.0  
**Gateway IP Address** 192.168.1.1

---

**SMB Info**  
**Domain Name** WORKGROUP

---

**Figure 3-8**

- To edit the IP settings, click LAN IP Setup in the main menu.

**LAN IP Setup**

---

DHCP Client  Disable  Enable


IP Address

IP Subnet Mask


Gateway IP Address

---

**Figure 3-9**

	<p><b>Warning:</b> Leave the DHCP Client setting as <b>Disable</b> so that the print server has a fixed IP address. It is not recommended that you select <b>Enable</b>. If you do, the print server will find an IP address automatically from the router or other DHCP server in your network. When the DHCP server changes the IP address, you will be disconnected from the print server's web browser interface and unable to open it again unless you can identify the reassigned IP address. Also, the SmartWizard assumes that the IP address of the print server is fixed.</p>
---	---

5. Edit the IP address, IP subnet mask, and gateway IP address, as desired, and then click **Apply**.
6. To change the print server name, click **Configure Server** in the main menu, edit the name in the **Print Server Name** text box, and click **Apply**.

	<b>Note:</b> The print server name must not contain any spaces.
---	---

## Changing the Password

---

If you want to restrict access to the print server setup, you can change the password as follows:

1. Open your Web browser and type in the IP address of the print server in the browser's Address text box.

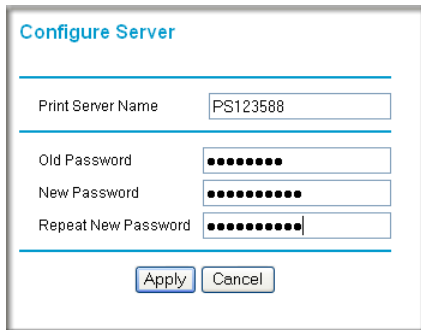
The browser opens a pop-up window prompting you for the user name and password.



**Figure 3-10**

2. For the user name, type **admin**. If you have previously assigned a password enter it in the password box. If you have not changed the password, type the default value of **password**.

3. Click Configure Server in the main menu.



The screenshot shows a web-based configuration window titled "Configure Server". It features a light blue header and a white body. The "Print Server Name" field is pre-filled with "PS123588". The password fields are masked with black dots. The "Apply" button is highlighted with a blue border.

**Figure 3-11**

4. In the Old Password text box, type the password you used to log in.
5. Type the new password in the New Password text box, and the Repeat New Password text box.
6. Click **Apply** to change the password settings.



# Chapter 4

## Troubleshooting

This chapter gives information about troubleshooting your PS121v2 USB Multifunction Print Server. After each problem description, instructions are provided to help you diagnose and solve the problem. For the common problems listed, go to the section indicated.

- Is the print server on and is the Status light lit?  
Go to [“Basic Functioning” on page 4-1](#).
- Have I connected the print server correctly?  
Go to [“Printing Errors” on page 4-2](#).
- How can I check the printer’s current status remotely?  
Go to [“Checking the Current Status of the Printer” on page 4-3](#)

### Basic Functioning

---



**Note:** For the most up-to-date PS121v2 installation details and troubleshooting guidance visit [www.netgear.com](http://www.netgear.com).

If you have trouble setting up your PS121v2, check the tips below.

### The print server has no power

- Make sure the power cord is connected to the print server.
- Make sure the power adapter is connected to a functioning power outlet. If it is in a power strip, make sure the power strip is turned on. If it is plugged directly into the wall, verify that it is not a switched outlet.
- Make sure you are using the correct NETGEAR power adapter supplied with your print server.

## No lights are lit on the print server

It takes a few seconds for the status light to be lit. Wait a minute and check the status light on the print server.

## Printing Errors

---

### The printer is printing "garbage" characters

If the printer does not match the printer driver in the operating system, then run the Add Printer Wizard.

### Windows error message appears when printing

Consult Windows help.

### The print server is not found

Make sure you can access other places from your computer. If you cannot, then troubleshoot your computer or Internet connectivity.

If you are running a software firewall, disable it. This includes the Windows XP firewall — which may have been turned on during Windows upgrade or installation without you being aware of it.

### Nothing is printing

- Try printing from another computer. If this is successful, then there is a problem with your computer configuration, not the print server. Consult the computer and operating system documentation.
- Turn off the print server, then turn it on. Test whether the print server works.
- If the printer does not match the printer driver in the operating system, then set up the print server using the *PS121v2 Resource CD*. See [“Set Up Each Additional PC to Use the PS121v2” on page 2-5](#)
- Disable the printer's bidirectional feature, if it is turned on under Windows 98SE or Windows ME.

## Checking the Current Status of the Printer

---

You can check the current status of the printer remotely from the Web configuration screen. The following conditions are displayed.

- Current status — on-line, off-line, out of paper
- Print State — either Idle or Printing, depending on the state of the printer

You can click the Print Test Page button from within the setup wizard to check that the print server and printer are working.



# Appendix A

## Default Configuration Settings and Technical Specifications

### Default Configuration Settings

---

The following table lists the default settings of your USB Multifunction Print Server.

Feature	Description
Smart Wizard	Enabled
<b>Network Settings</b>	
DHCP	Enabled (The print server must be set to a static IP in order to perform properly.)
User Name	admin
Password	password

### Technical Specifications

---

The following table provides technical specifications for the USB Multifunction Print Server.

Technical Specifications	
Standards Compatibility	IEEE 802.3u, 100BASE-TX, Fast Ethernet IEEE 802.3i 10BASE-T CSMA/CD NetBEUI, and TCP/IP protocols
Data Rate	10/100 Mbps
Interface	10BASE-T/100BASE-TX network port (RJ-45) USB 2.0 port
Power Specifications for the Power Adapter	Input voltage: 100 to 240 V AC, 50 to 60 Hz, according to the power adapter Localized plug: For North America, Japan, UK, Europe, and Australia Output voltage: 12 V DC at 1A

<b>Technical Specifications (continued)</b>	
Power Specifications for the Print Server	Power consumption: 12 W maximum Input voltage: 12 V DC at 1 Amp, maximum
Operating Temperature	0 to 40 C (32 to 104 F)
Operating Humidity	90% maximum relative humidity, noncondensing
Electromagnetic Emissions Compliance	FCC Part 15, Class B EN 55 022 (CISPR22), Class B EN 55 024 C-Tick N10947

# Appendix B

## Related Documents

This appendix provides links to reference documents you can use to gain a more complete understanding of the technologies used in your NETGEAR product.

<b>Document</b>	<b>Link</b>
Internet Networking and TCP/IP Addressing	<a href="http://documentation.netgear.com/reference/enu/tcpip/index.htm">http://documentation.netgear.com/reference/enu/tcpip/index.htm</a>
Preparing a Computer for Network Access	<a href="http://documentation.netgear.com/reference/enu/wsdhcp/index.htm">http://documentation.netgear.com/reference/enu/wsdhcp/index.htm</a>
Glossary	<a href="http://documentation.netgear.com/reference/enu/glossary/index.htm">http://documentation.netgear.com/reference/enu/glossary/index.htm</a>

