

NETGEAR 108 Mbps Wireless USB 2.0 Adapter WG111T

These setup instructions assume that you will connect to an access point or wireless router.

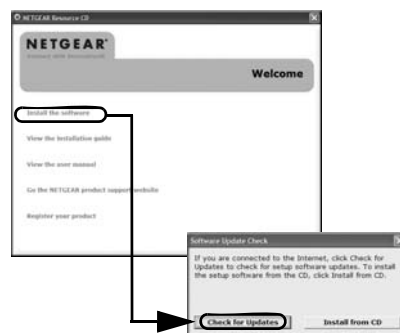
Estimated Completion 10 minutes.

Installation

1. First, install the WG111T software.

Insert the NETGEAR CD. If the main page does not appear, double click **autorun.exe** on the CD.

- Click **Install the Software**. The Check for Updates window opens.
- Follow the Wizard steps, and click **Next** to continue.
- When the Installation Complete message appears, click **Next**.



2. Now, connect the wireless USB adapter.

- Locate an available USB port on your PC. When prompted, shut down the computer.
- Connect the USB cable to the WG111T and insert the other end of the cable into the USB slot on your PC. See “Placing the USB Adapter Cradle” on the other side of this card.
- Restart your computer.
- You will be prompted to select the country where you are located.
- Select the country and click **Agree**.



3. Use the Smart Wizard to set up your wireless USB adapter.

- Windows 2000 users go to Step b. Windows XP or Vista users can set up the wireless adapter with the NETGEAR Smart Wizard (recommended) or the Windows configuration utilities.



- NETGEAR Smart Wizard:** Reveals more information about each network and makes it easier to troubleshoot network connection problems.
- Windows configuration utilities:** See the Windows documentation or “Using Windows XP and Vista Wireless Configuration Utilities” at: <http://documentation.netgear.com/reference/enu/winzerocfg/index.htm>

- Click **Next** to accept the NETGEAR Smart Wizard. You will be prompted to let the wizard help you connect to a network (recommended).
- Click **Next** to accept.



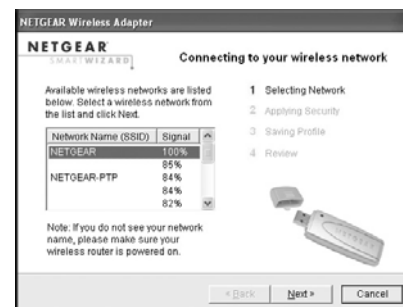
4. Connect to a wireless network.


- Select the wireless network from the drop-down list, and the wizard records your choice.

Note: Hidden networks do not broadcast the Network Name (SSID). These networks are in the drop-down list, but the Network Name (SSID) is blank.

If the network uses security, then the Smart Wizard detects it.

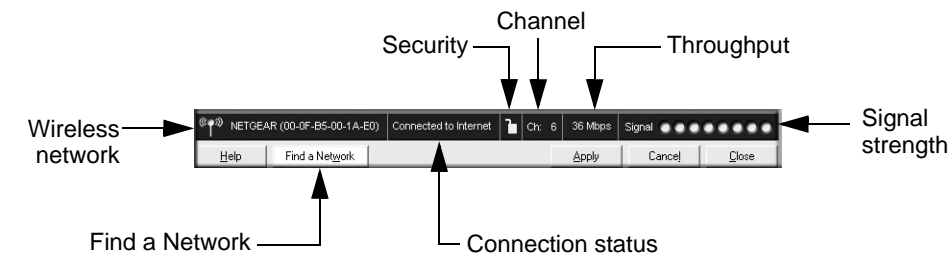
- Follow the Wizard steps for Security (if used) and for saving a Profile.
- After you have reviewed the settings, click **Finish**.



The WG111T icon  appears in the system tray and on the desktop; and the Settings page opens. The wizard initiates your wireless connection. It could take up to a minute for your wireless connection to be established. Check the status bar.

Using the Status Bar

The status bar is located at the bottom of the Settings page.



Understanding the Status Bar	
Wireless network	Identifies which wireless network you have joined.
Security	<ul style="list-style-type: none"> Locked: security enabled. Unlocked: security not enabled.
Channel	The wireless channel used by the network. If many wireless networks in your area use the same channel they can interfere with one another.
Throughput	Wireless throughput measured in Mega bits per second. For best performance, connect the WG111T to a USB 2.0 port. With a USB 1.1 port the WG111T throughput is limited to the 14 Mbps of the USB 1.1 standard.
Signal strength	More dots indicates a stronger signal. Usually, you will experience higher throughput when the signal is strongest.
Find a Network	Click Find a Network to open the Connection Wizard.
Connection status	Identifies the status of your network connection. <ul style="list-style-type: none"> Connected to Internet: Wireless Internet connection is OK. Connected to Router: Wireless connection to the router is OK but the router is not connected to the Internet. 169.254.x.x or _____.____.____.____: The wireless connection to the router is OK but there is a problem with the router. See the <i>NETGEAR 108 Mbps Wireless USB 2.0 Adapter WG111T User Manual</i> on the NETGEAR CD for troubleshooting tips.

Placing the USB Adapter Cradle

You can attach the WG111T 108 Mbps Wireless USB 2.0 Adapter directly to a USB port on your computer, or use the USB cable to extend the range and obtain better wireless reception.

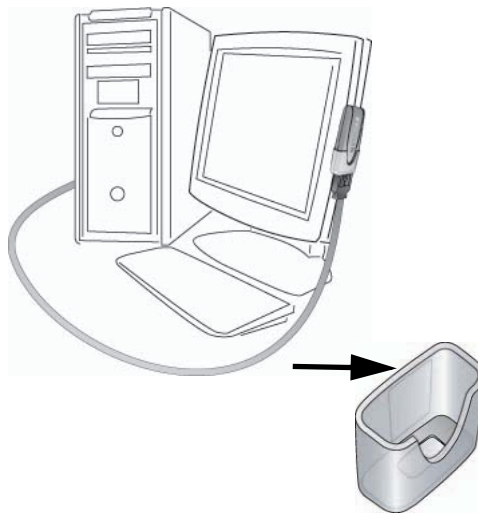
Follow these instructions to use the USB cable, plastic cradle, and loop and hook fastener provided in the package for better USB Adapter placement on a notebook computer:

1. The WG111T 108 Mbps Wireless USB 2.0 Adapter comes with three black fasteners. Locate the one that has a prickly side and attach it to the plastic cradle on the middle of the outside rear.
2. Insert the WG111T 108 Mbps Wireless USB 2.0 Adapter in the plastic cradle.
3. Place one of the other pieces of loop and hook fastener on the back of your notebook monitor near the top for better reception.

Note: The last piece fastener can be placed on the side of your PC monitor nearest your wireless access point, if you are using the USB Adapter with a desktop PC.

4. Join the pieces of the fastener to attach the USB Adapter in the plastic cradle to the notebook or desktop monitor.

See the installation instructions for your operating system before attaching the USB cable to the USB Adapter and your computer.



Technical Support

After completing the Smart Wizard configuration assistant, locate the serial number on the bottom label of your product and use it to register your product at <http://www.NETGEAR.com/register>.

Registration on the website or over the phone is required before you can use our telephone support service. The phone numbers for worldwide regional customer support centers are on the Warranty and Support Information card that came with your product.

Go to <http://kbserver.netgear.com> for product updates and Web support.



201-10318-04

January 30, 2007



This symbol was placed in accordance with the European Union Directive 2002/96 on the Waste Electrical and Electronic Equipment (the WEEE Directive). If disposed of within the European Union, this product should be treated and recycled in accordance with the laws of your jurisdiction implementing the WEEE Directive.

© 2007 by NETGEAR, Inc. All rights reserved. NETGEAR is a registered trademark of NETGEAR, Inc. in the United States and/or other countries. Other brand and product names are trademarks or registered trademarks of their respective holders. Information is subject to change without notice.