

TZ-BC08

-----User Manual



Content

1. Product introduction	3
2. Key feature	3
3. Product Specifications	4
4. Applications.....	4
5. Configuration tools.....	4
5.1 Instructions.....	5
6. WeChat Interface Access Description.....	8

1. Product introduction

TZ-beacon is based on the current Bluetooth 4.0 low energy consumption of the latest technology. It can be used to create a base station signal. TZ-beacon base station can automatically create a signal area, the corresponding application will remind user whether access to the signal network or not when the equipment enters into the area. Users can use intelligent device to transmit data through TZ-beacon low energy consumption Bluetooth technology.

Beacon has a practical significance only when cooperates with the corresponding App. Beacon only provides a location service, you need to develop App software to be installed in users' mobile phone, then use the message forward function of beacon. For instance, when you enter the broadcasting area and your phone detects the beacon, message from your App will be triggered. Those messages are not saved in beacon.

2. Key feature

- 2.4Ghz with strong anti-jamming capability
- Adopt Bluetooth® 4.0(Bluetooth® low energy) Nordic NFR51822 chip, ultra-low power consumption.
- Support WeChat Shake Nearby function

3. Product Specifications

TZ-BC08	
Item	Parameters
Chip	Nordic nRF51822
Color	White
Size	65x50x10 mm
Weight	15 gram
Battery	CR 2450
Voltage	3V DC
Protocol Standards	BLE 4.0
Suitable systems	iOS 7.0 or Android 4.3above
Safety	Password protection
Broadcast interval	0.1 s~3 s (Adjustable)
Operating time	1~1.5 year (Depending on the operating mode)

4. Applications

1. Retail. After installing the corresponding App, customers can get discount coupon / vouchers, when they enter broadcasting area of the beacon.
2. Promotion. TZ-beacon can be used for concert or large sports venues to delivery complicated contents.
3. Route planning. Tourist can choose their own route through our beacon.
4. On-site interaction. Such as WeChat “Shake Nearby” functions.
5. Auto-parking system. Positioning and navigation can cooperate to solve parking space problem, arrange for route and improve the user experiences.

5. Configuration tools

Bluetooth beacon has iBeacon and Eddystone UID mode. The following is an example of iBeacon mode.

iBeacon configuration App: We have configuration App to adjust UUID, Major, Minor,

broadcasting strength and interval, and read battery status of our beacons. Kindly please download from

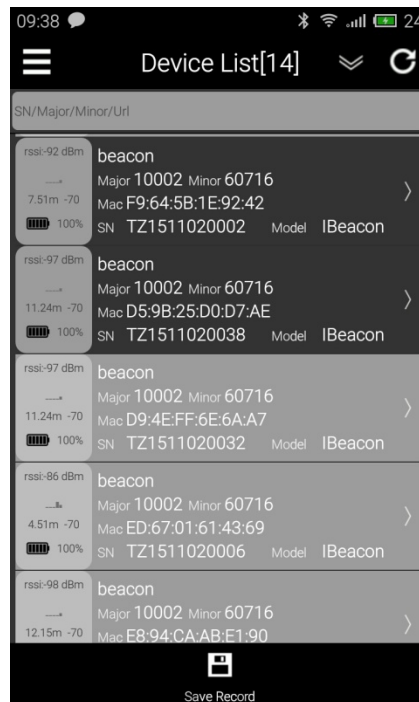
Apple Store:

<https://itunes.apple.com/us/app/tzone-beacon/id1129067261?l=zh&ls=1&mt=8>

Google Play: <https://play.google.com/store/apps/details?id=tzone.beacon.config.new>

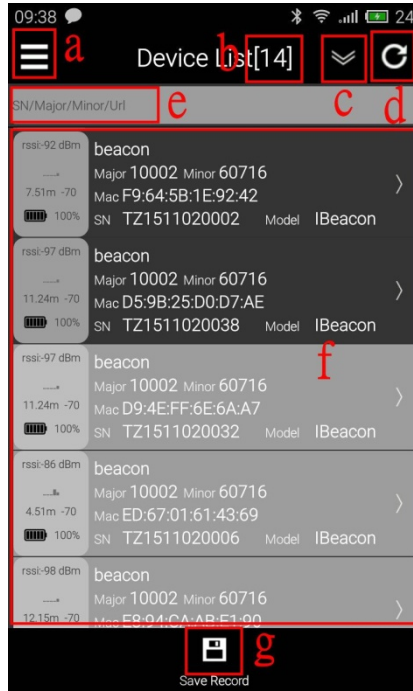
Configuration tools are available for customers to view and modify the parameters.

There is single configuration App and batch configuration software. Opening TZBeacon configuration tool, you will see the list of beacons nearby; you can see the RSSI values of each beacon, the battery status, Major, Minor value, etc., as shown below.



5.1 Instructions

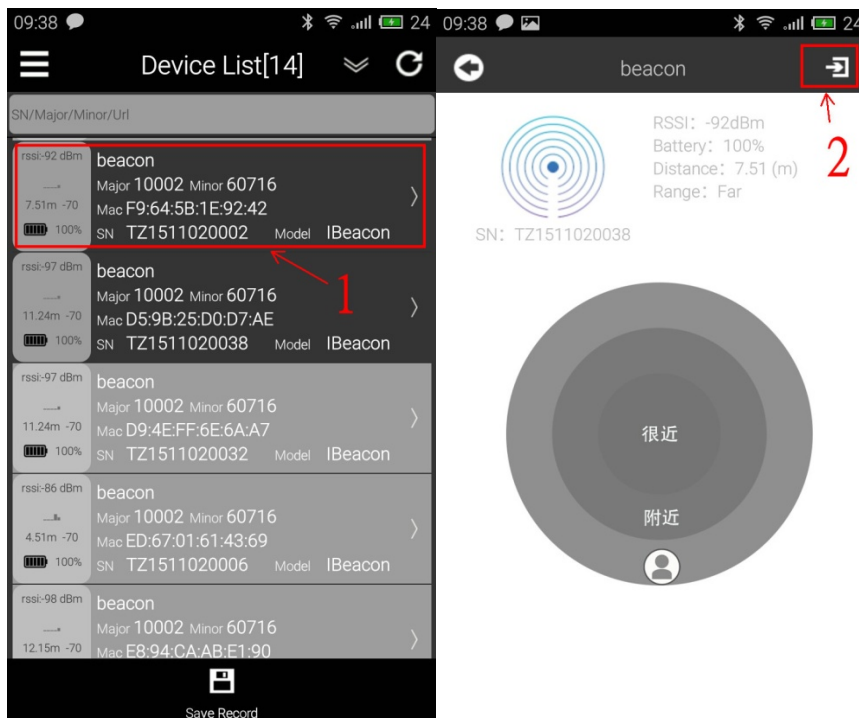
Interface features description:



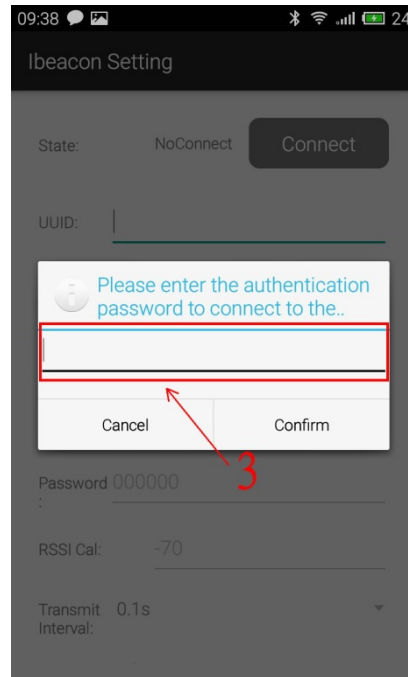
- a: restrict the range of beacon detection
- b: quantity of beacon detected
- c: sequence preference of the list
- d: refresh the list
- e: input Serial Number / Major / Minor for choosing beacon
- f: beacon list
- g: save the info

7.2 Beacon Configuration

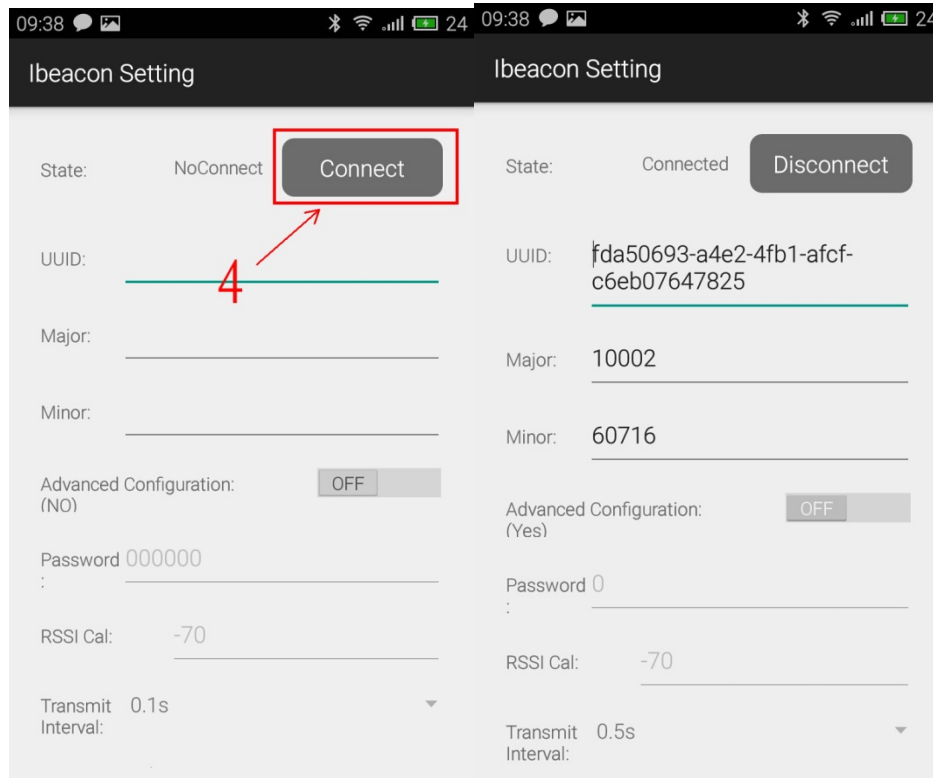
(1) Turn on the configuration App and Bluetooth on smart phone



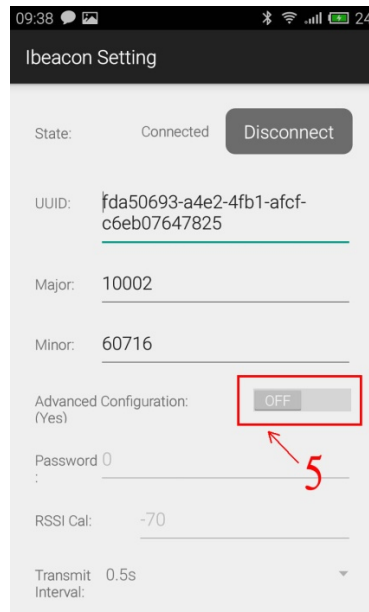
(2) Enter the password to connect Beacon. Default: 000000 or 123456. If the password is wrong, it will automatically disconnect.



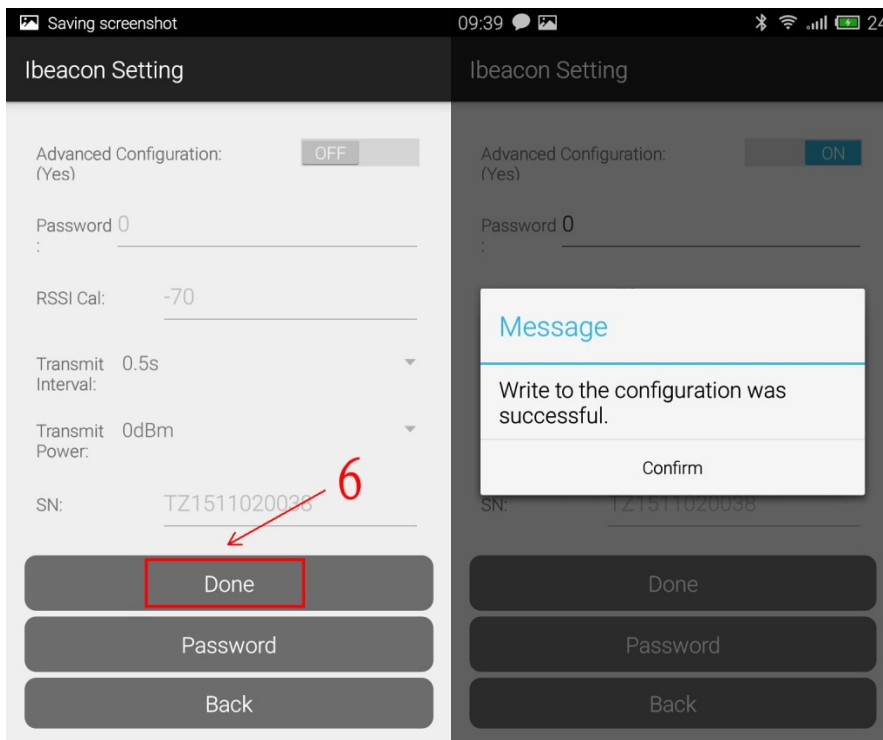
(3) After pressing "Connect", the UUID, Major and Minor will appear. You can reset these three parameters.



(4) If you need to set advanced configuration, kindly please turn it on. Then you can set the password, RSSI and transmit interval.

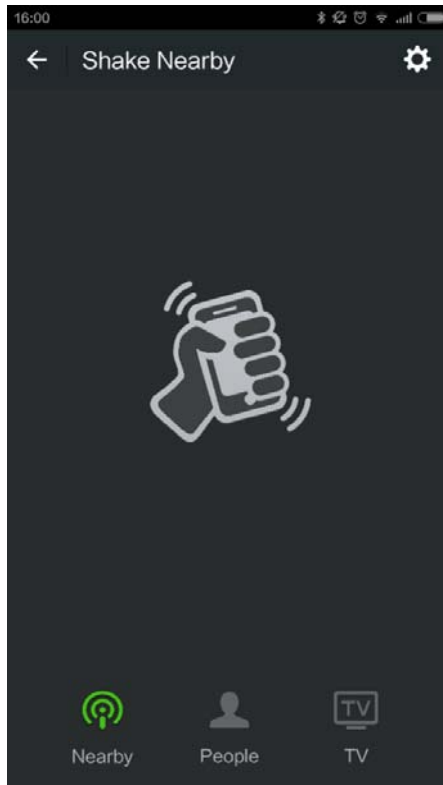


(5) After you set the parameters, kindly please press “Done”

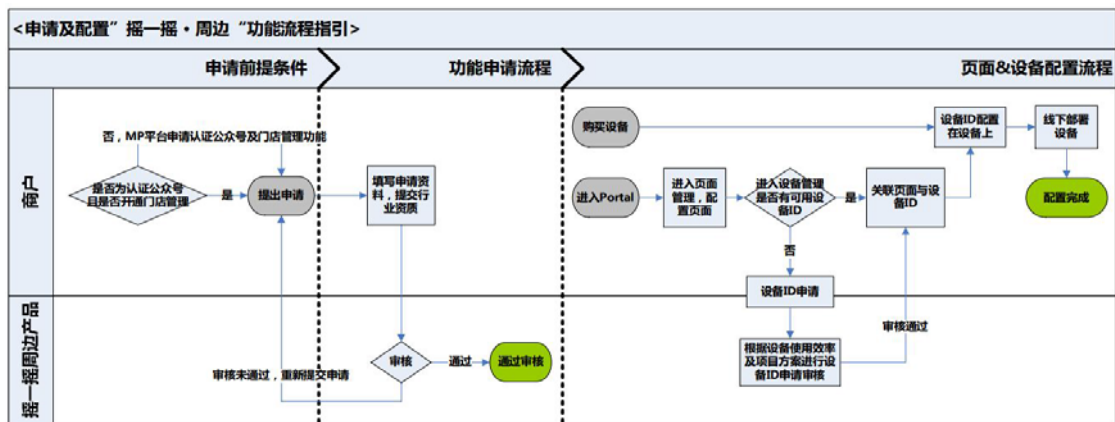


6. WeChat Interface Access Description

WeChat Shake Nearby function is a new feature in WeChat version 6.1, but notice that there must be beacon hardware around. This is for your reference, as Content Management System of WeChat is in Chinese.



1. WeChat application



WeChat shake nearby



Get equipment ID distributed by WeChat.

	A	B	C	D	E	F	G	H	I	J
1	设备ID	设备UUID	设备major	设备minor	备注信息	门店ID	门店名称	配置页数	状态	
2	230114	FDA50693	10002	10324	Hulk的样机	0		1	已激活	
3	230113	FDA50693	10002	10323	BEN的样机	0		1	未激活	
4	230112	FDA50693	10002	10322		0		0	未激活	
5	230111	FDA50693	10002	10321		0		0	未激活	
6	230110	FDA50693	10002	10320		0		0	未激活	
7	230109	FDA50693	10002	10319		0		0	未激活	

Modify UUIS, Major, Minor value of TZBeacon with the configuration tool according to the value allocated by Wechat.

Test ID can use the test ID below to configure the Beacon, Experience "Shake it off" of WeChat.

UUID: FDA50693-A4E2-4FB1-AFCF-C6EB07647825

Major: 10003

Minor: 18679

2. Allocate Wechat "Shake nearby"

← 页面管理 / 新建页面

主标题	缩略图 (建议尺寸 120x120像素) 上传 主标题: (不超过6个字) 副标题: (不超过7个字)
副标题	

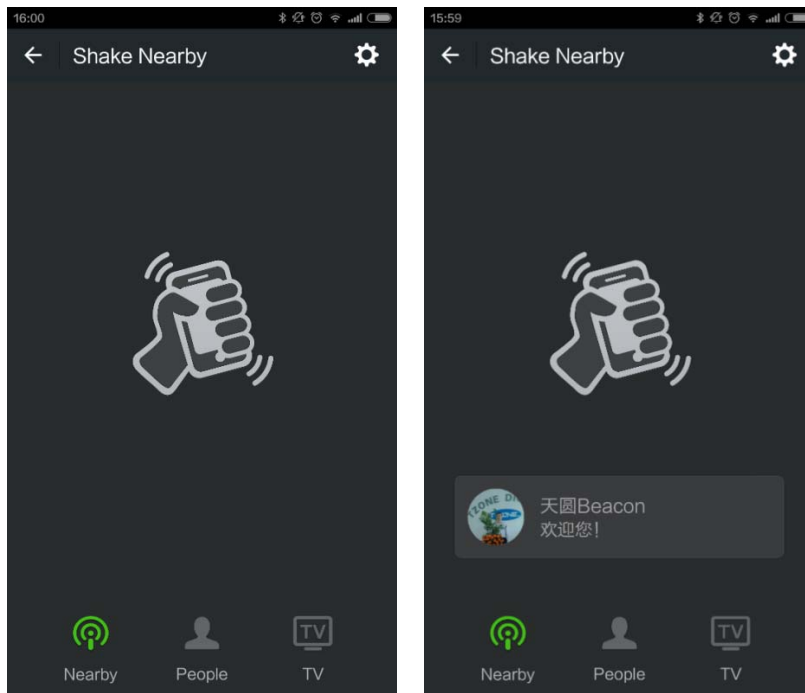
← 返回

请用微信扫描二维码, 在手机上查看页面

跳转URL: (建议页面大小不超过200KB) 请输入自定义URL
备注信息: (建议填写, 方便页面配置设备) 请输入备注信息 0/15

Three point among the information: logo / main title six words / subheading seven words.

A mobile version micro website is: the content you want to display.



§ 15.19 Labelling requirements.

This device complies with part 15 of the FCC Rules. Operation is subject to the following two conditions: (1) This device may not cause harmful interference, and (2) this device must accept any interference received, including interference that may cause undesired operation.

§ 15.21 Information to user.

Any Changes or modifications not expressly approved by the party responsible for compliance could void the user's authority to operate the equipment.

§ 15.105 Information to the user.

Note: This equipment has been tested and found to comply with the limits for a Class B digital device, pursuant to part 15 of the FCC Rules. These limits are designed to provide reasonable protection against harmful interference in a residential installation. This equipment generates uses and can radiate radio frequency energy and, if not installed and used in accordance with the instructions, may cause harmful interference to radio communications. However, there is no guarantee that interference will not occur in a particular installation. If this equipment does cause harmful interference to radio or television reception, which can be determined by turning the equipment off and on, the user is encouraged to try to correct the interference by one or more of the following measures:

- Reorient or relocate the receiving antenna.
- Increase the separation between the equipment and receiver.
- Connect the equipment into an outlet on a circuit different from that to which the receiver is connected.
- Consult the dealer or an experienced radio/TV technician for help.

*** RF warning for Portable device:**

The device has been evaluated to meet general RF exposure requirement. The device can be used in portable exposure condition without restriction.