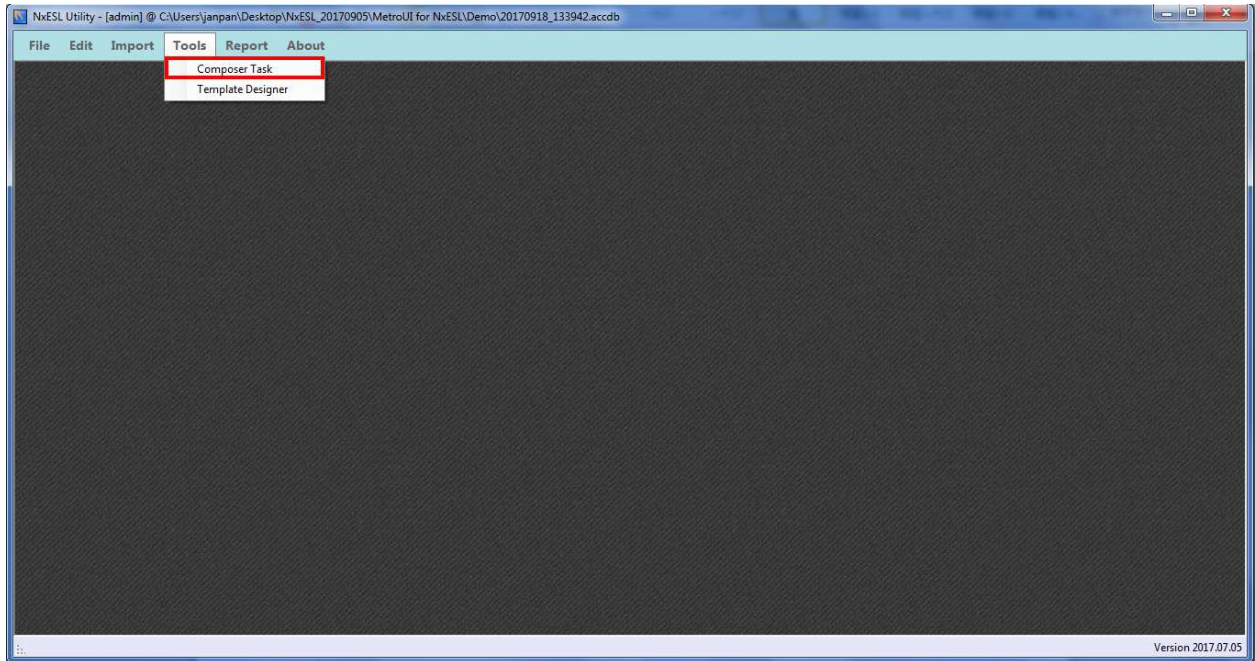


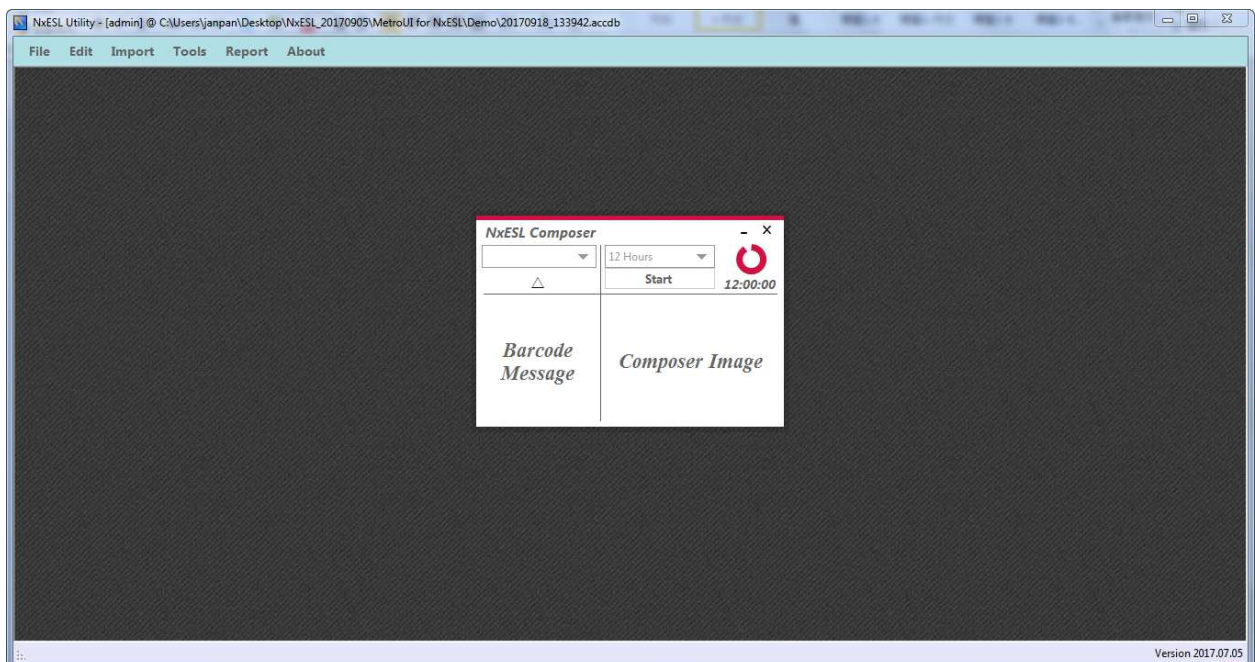
3.2.5 Composer

1) Click composer task. Please keep running composer. Do not close the program.

Tool > Composer Task

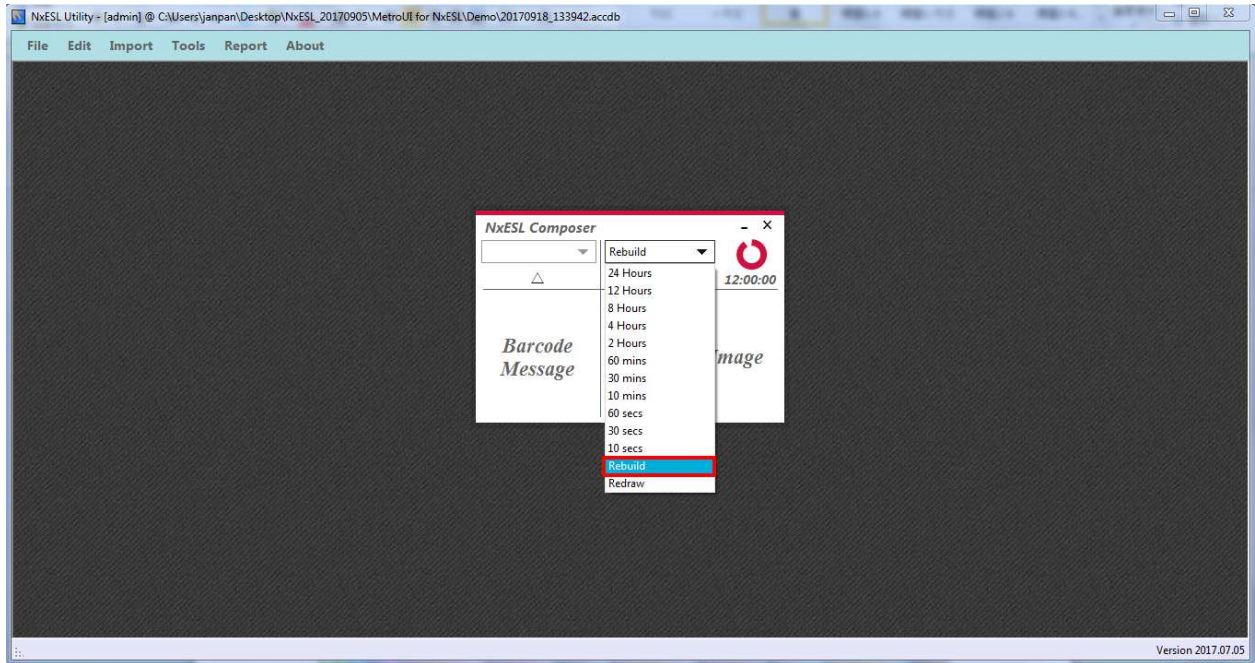


2) Show NxESL Composer window.

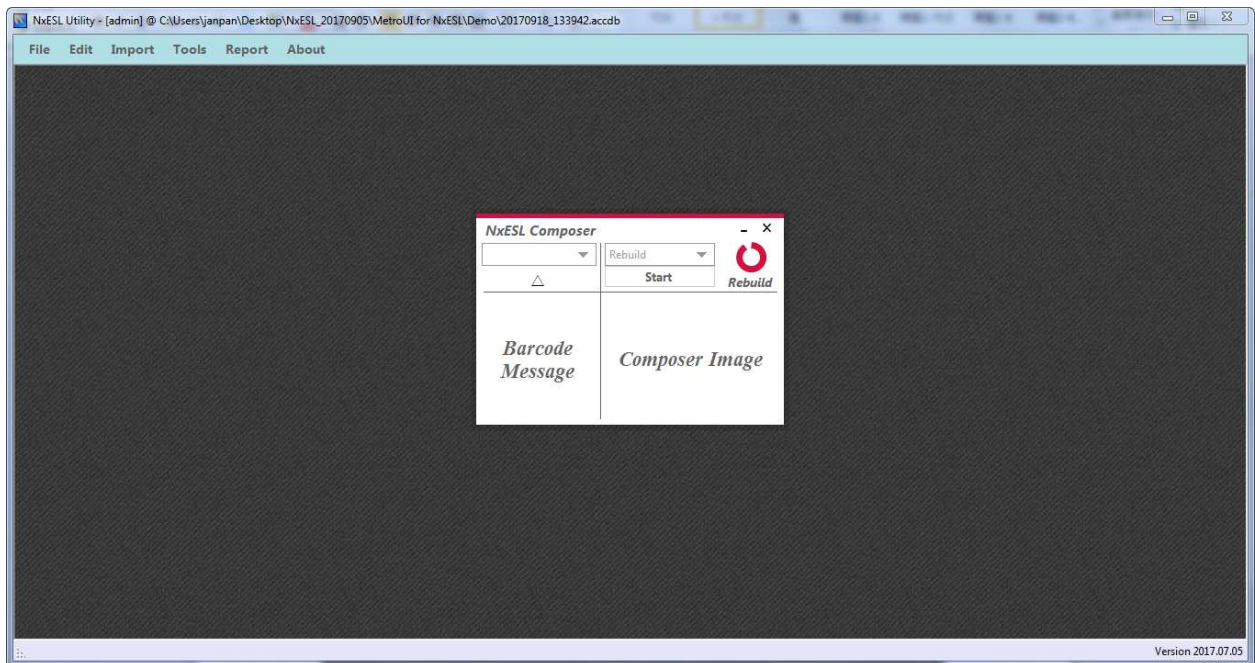


3) Click drop down list then choose “Rebuild”.

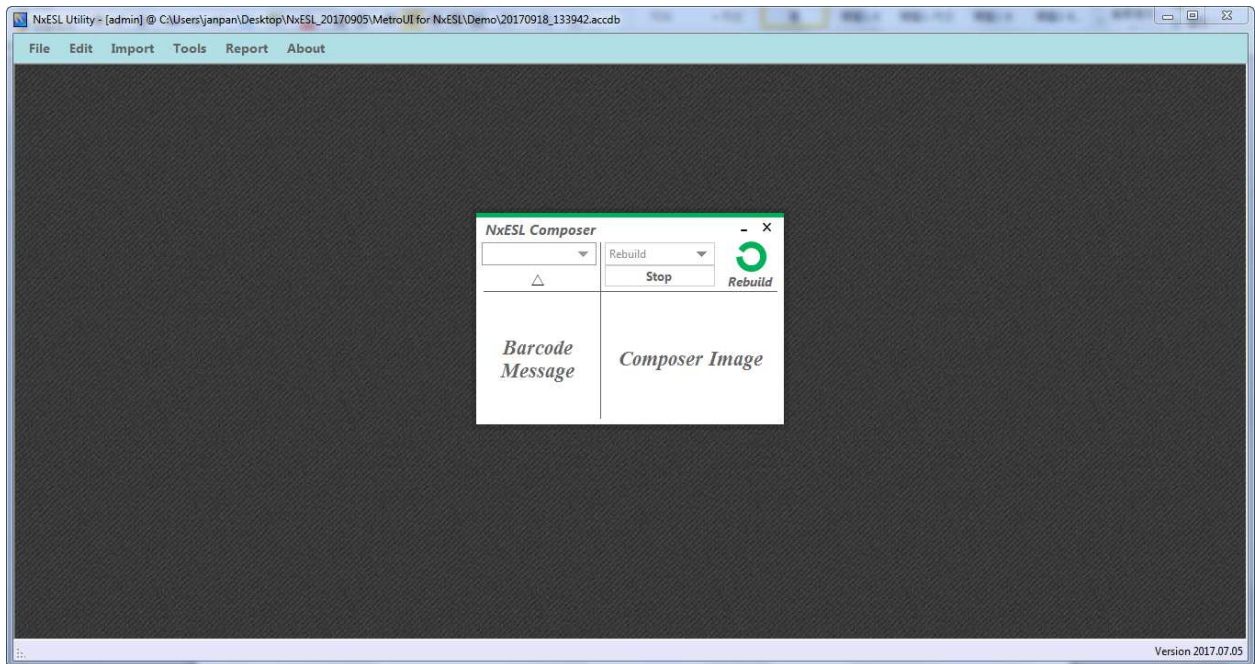
※Due to option of "rebuild" mean only executes one time. You have to set other option in composer program except first time use. Because of the program must running regularly every for check the info.



4) Click “start”.

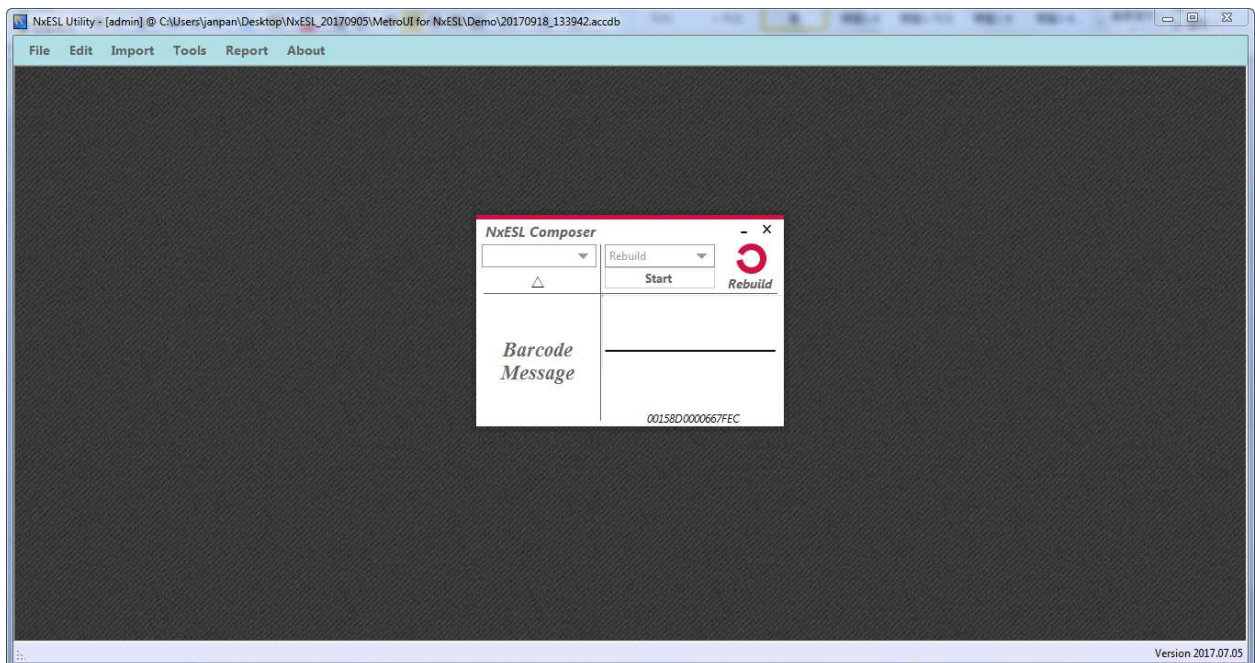


5) Show up the green icon mean is processing.



6) Show up the red icon mean is complete making image.

※Please maintain the program is running all the time.

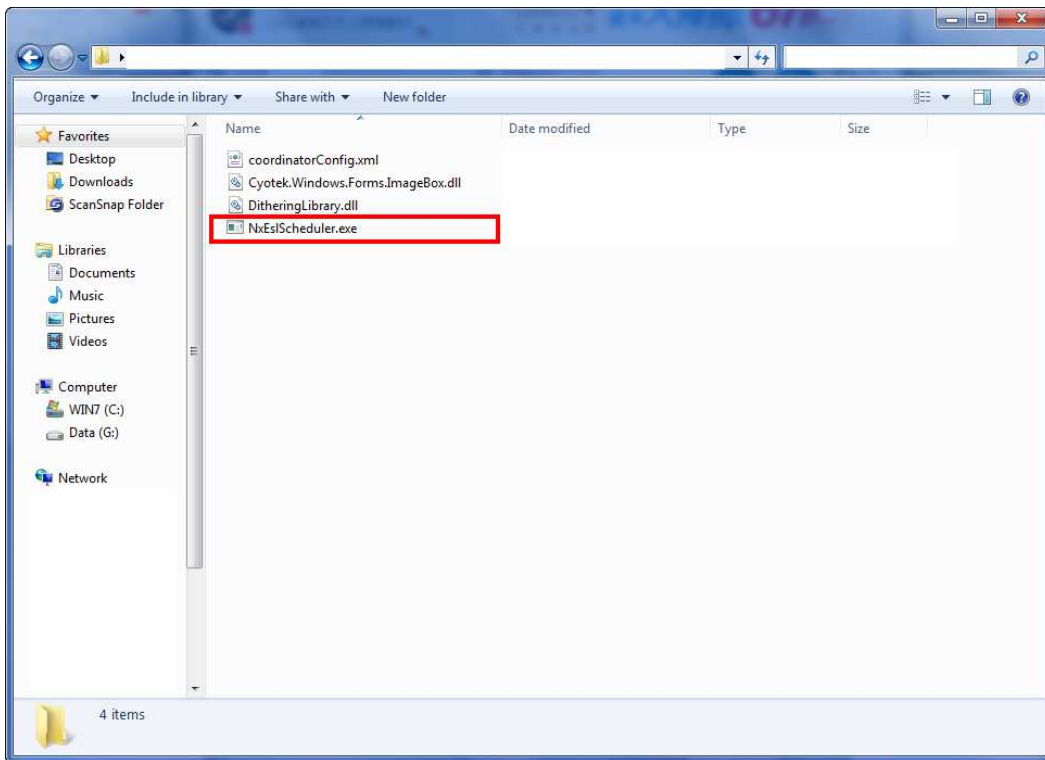


3.2.6 NxESLScheduler

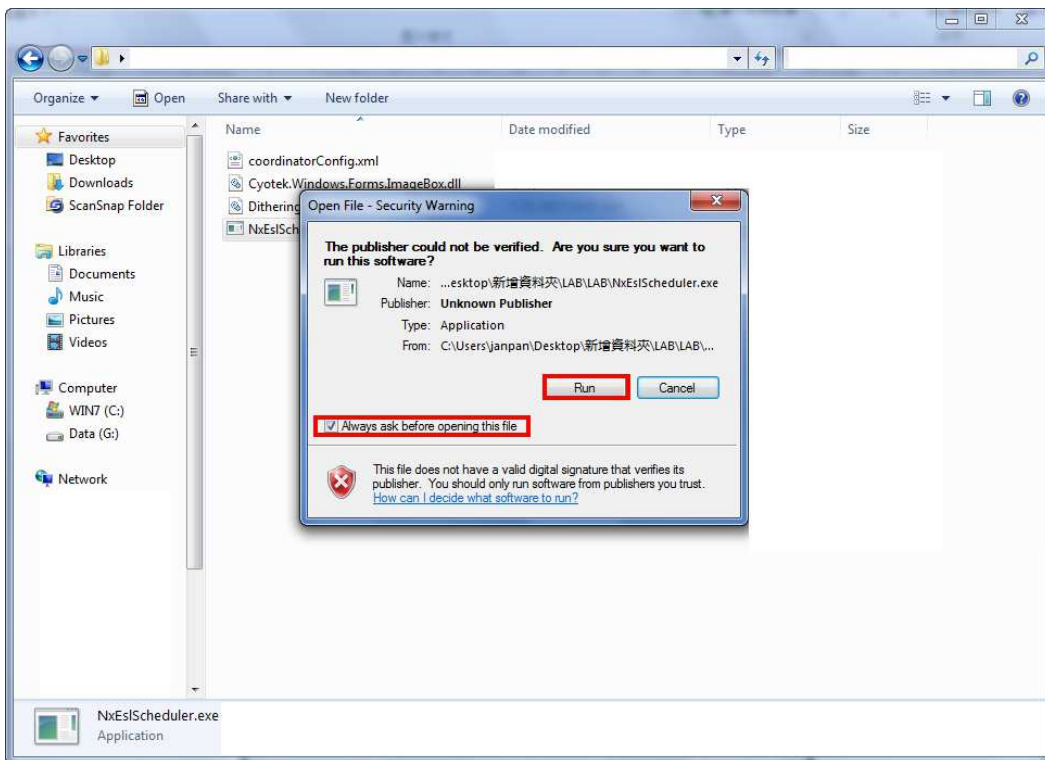
1) Open NxESLScheduler.exe. Do not close because the program has to continue running and

update info on time.

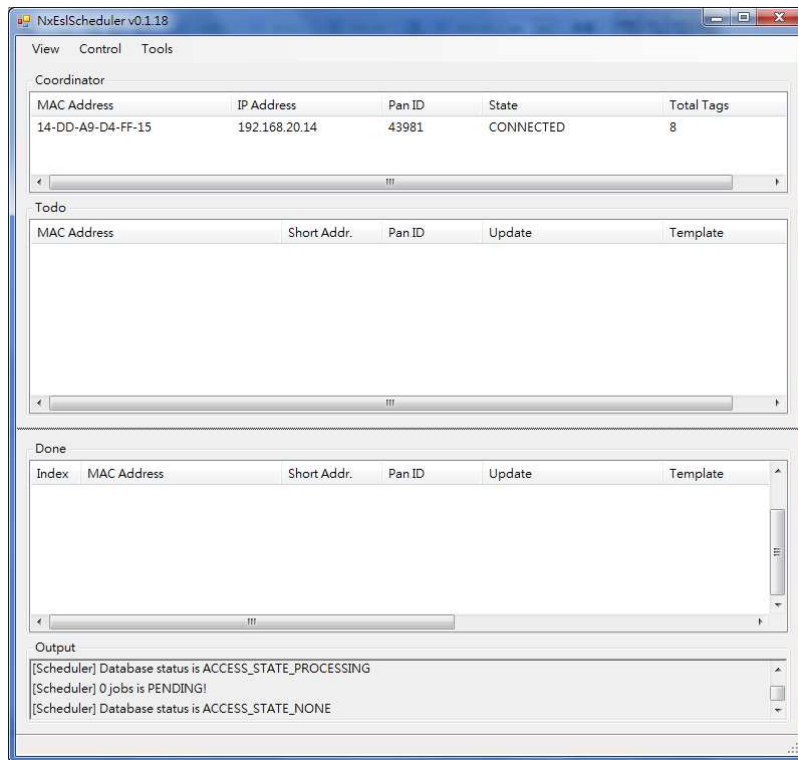
File location > LAB > NxEsIScheduler.exe.



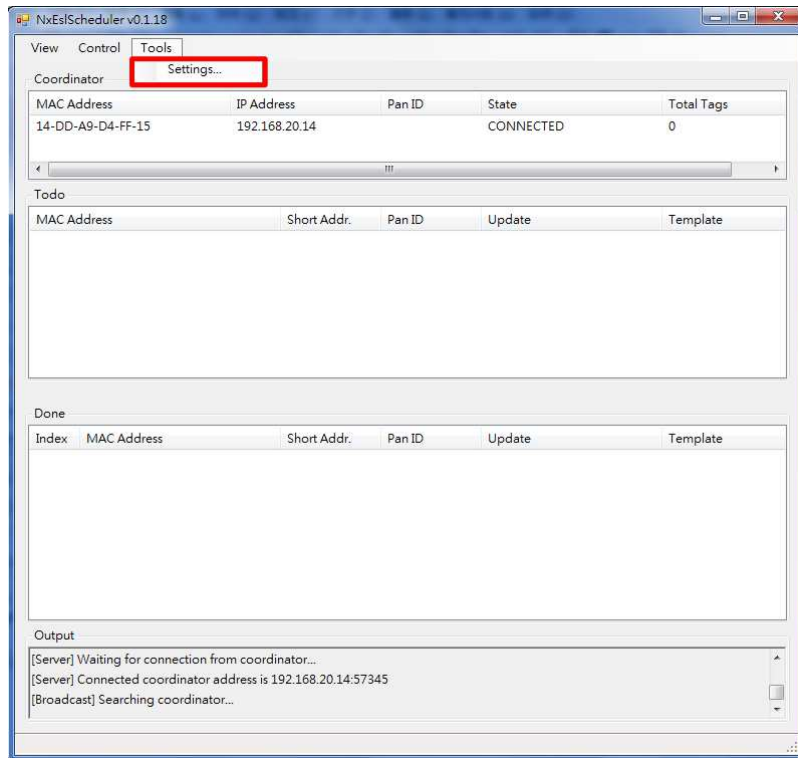
2) Please cancel tick and click run.



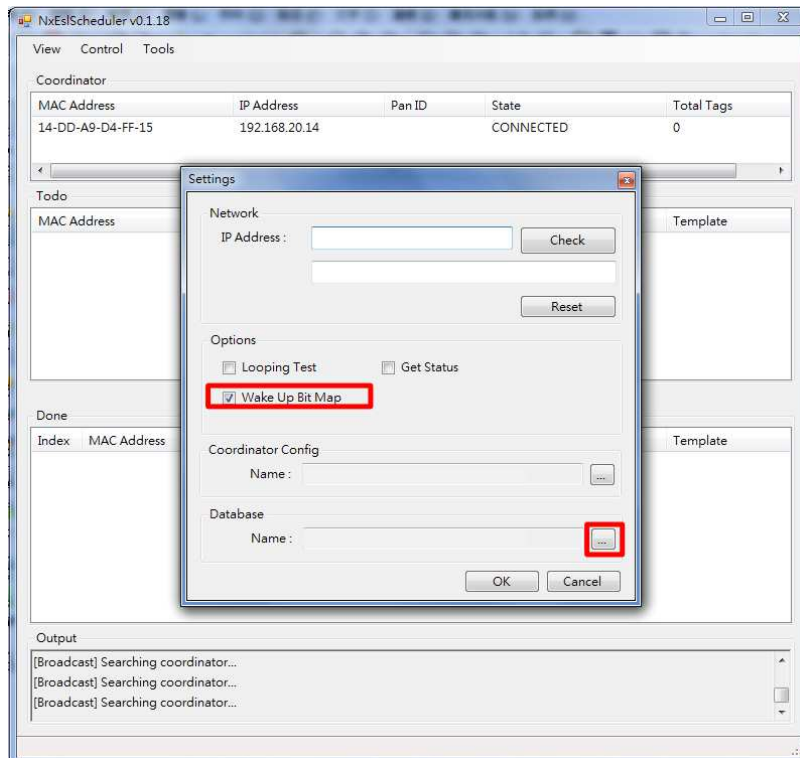
- 3) When you launch the execution file the MAC address will auto import in.
 ※If MAC address is not show up in the window. Please reset coordinator.



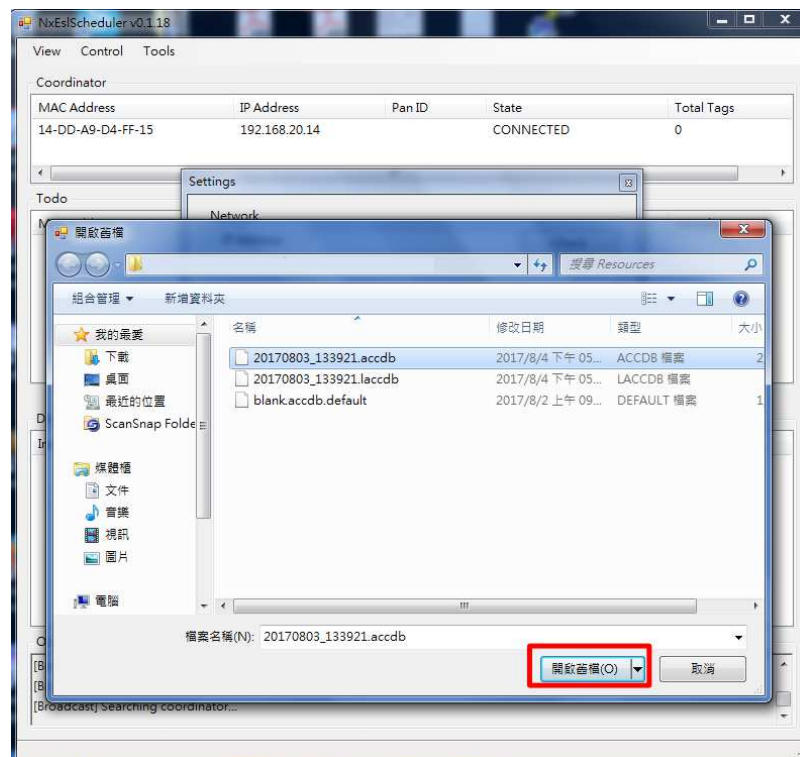
- 4) Import data. Tool > Setting



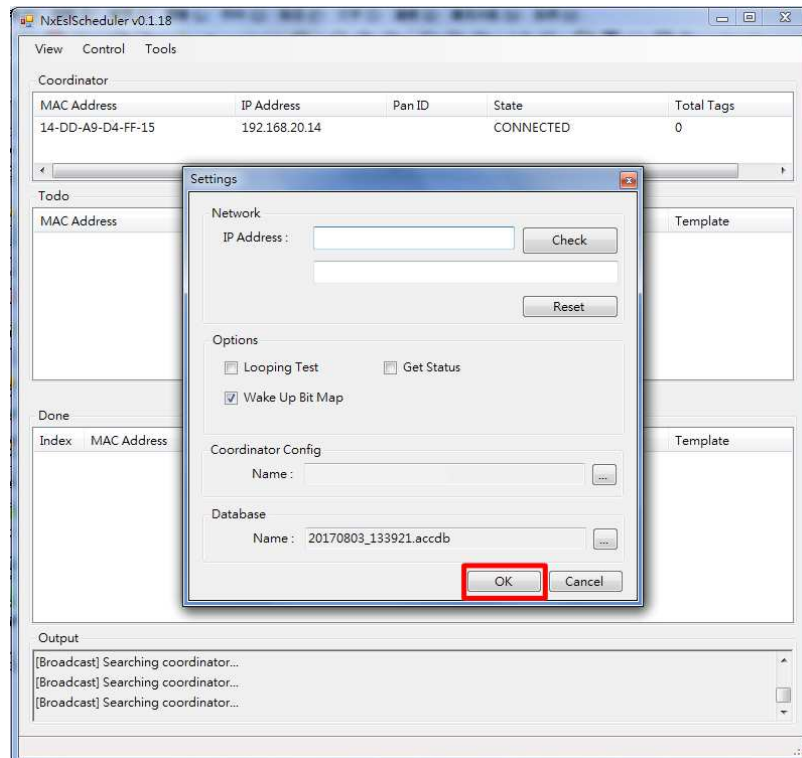
5) Tick “Wake up Bit Map” and click “Database” to setting up data source.



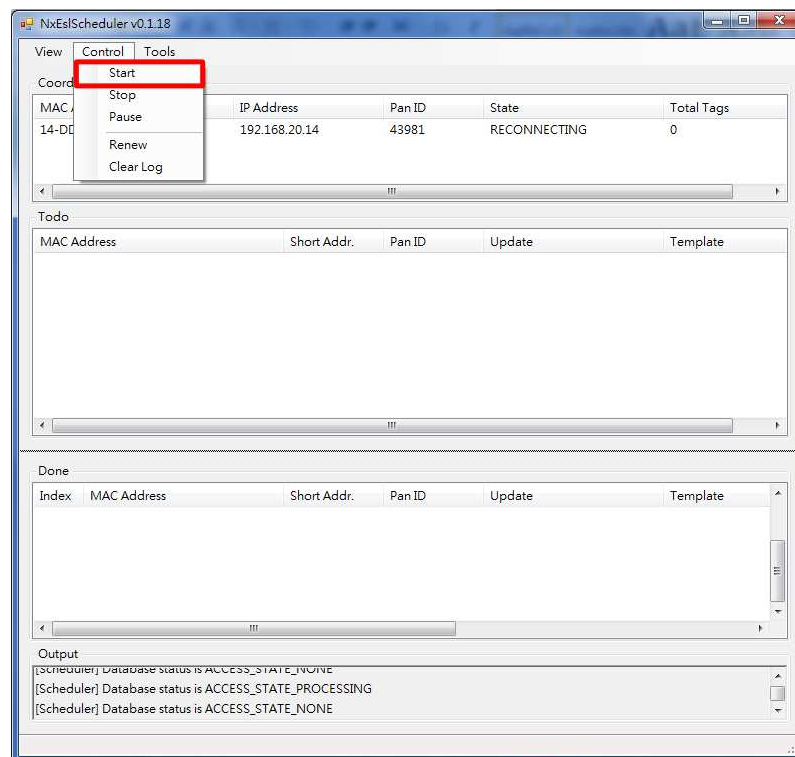
6) Open the file that is from Nx.EXE creative document. (Refer to 3 > 3.2> 3.2.1)



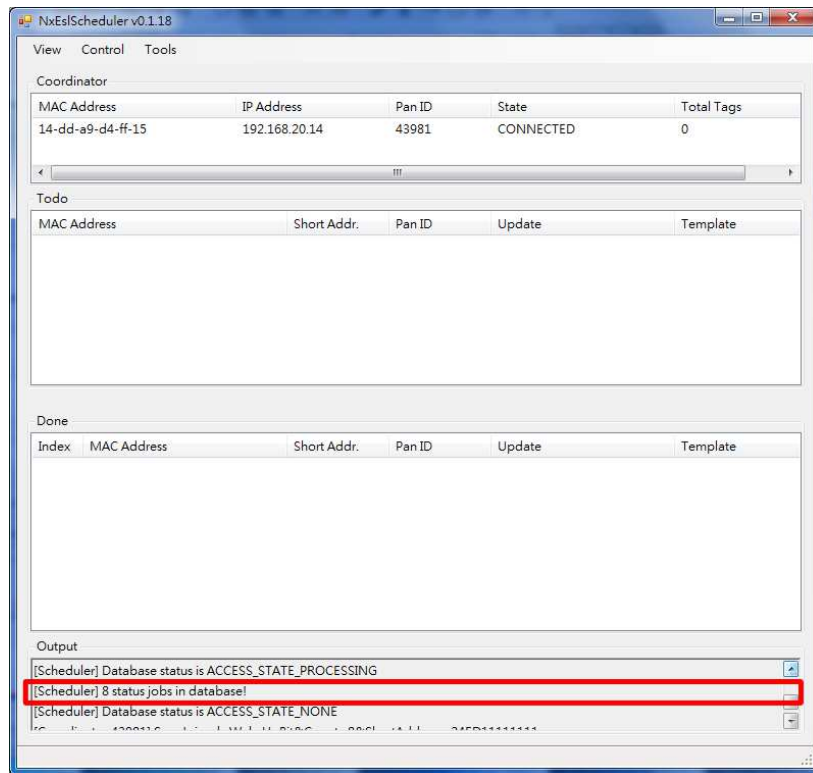
7) Click “ok”.



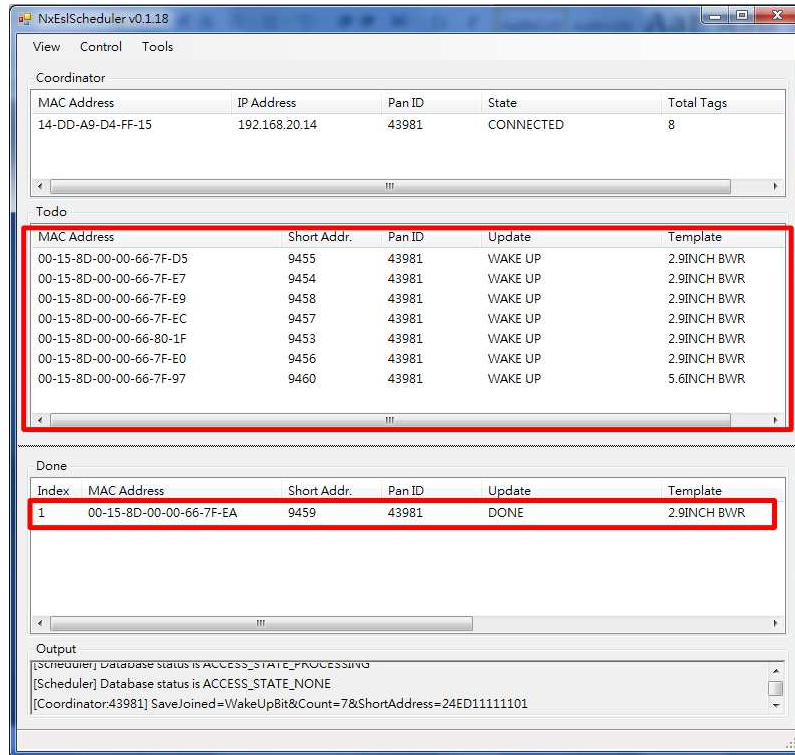
8) Control > Start



9) You will see “8 status jobs in database” that show up in the output block after you click start. It is mean the program is processing. (Our sample is eight ESLs.)

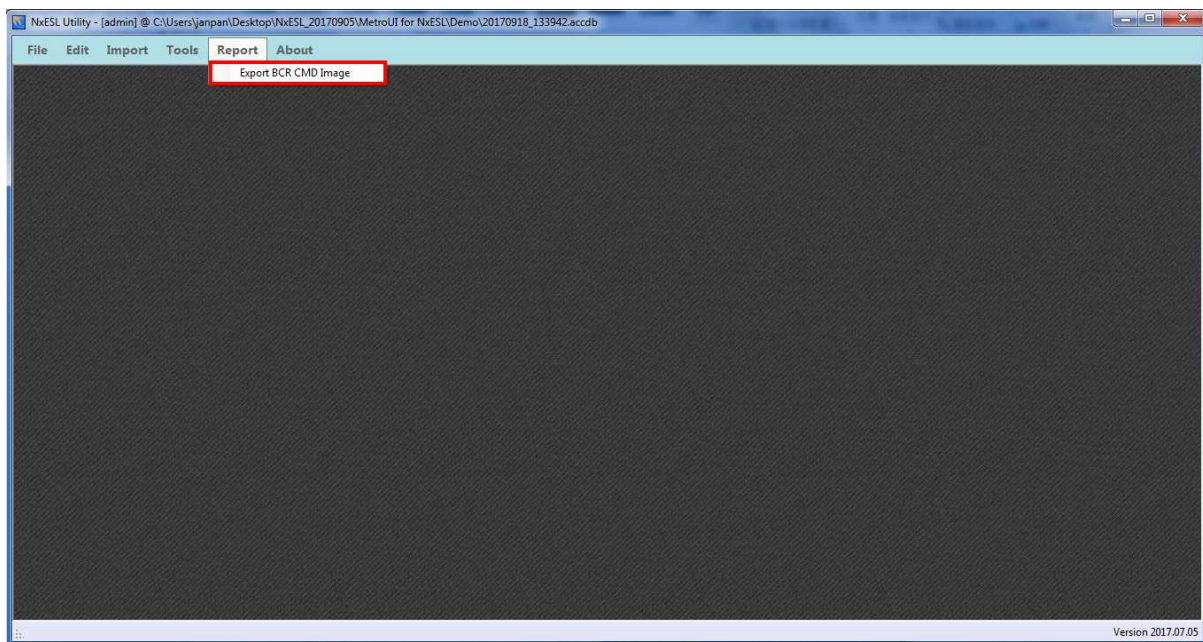


10) Todo block display each ESL transfer schedule.it is display in update in Todo area. Update has five mode respectively PENDING, TRANSFERRING, TRANSFERRED, WAKEUP, UPDATING. Done block display already ESL was complete transfer.

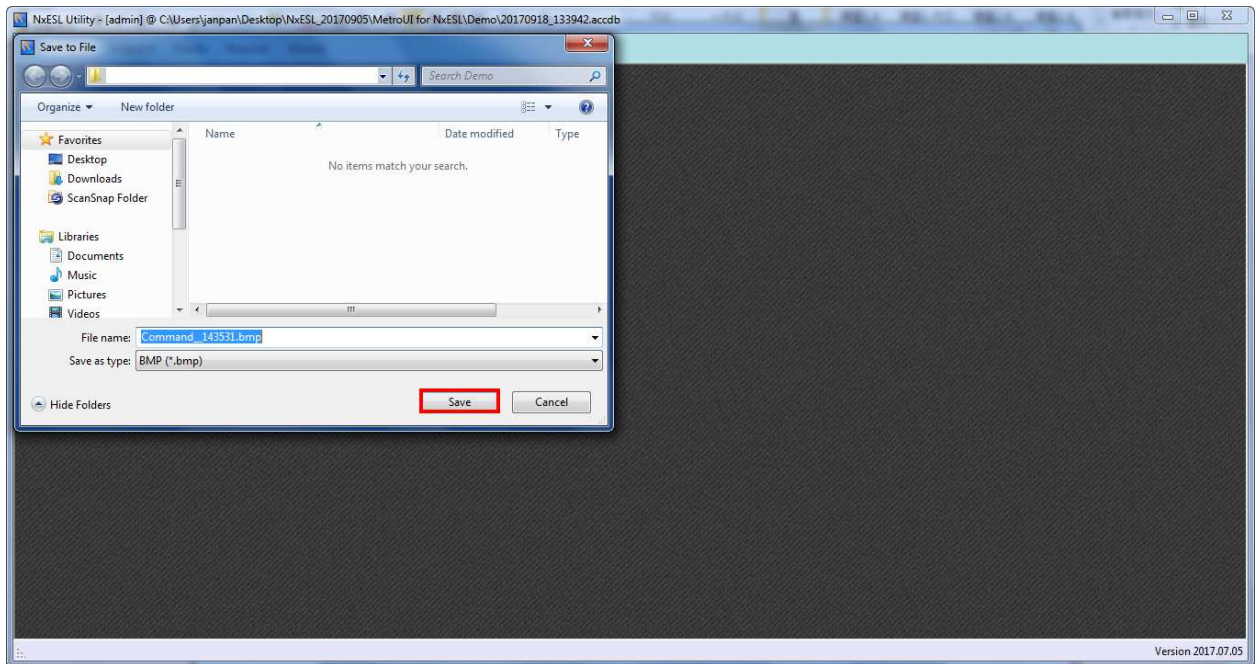


3.3 How to use barcode instruction

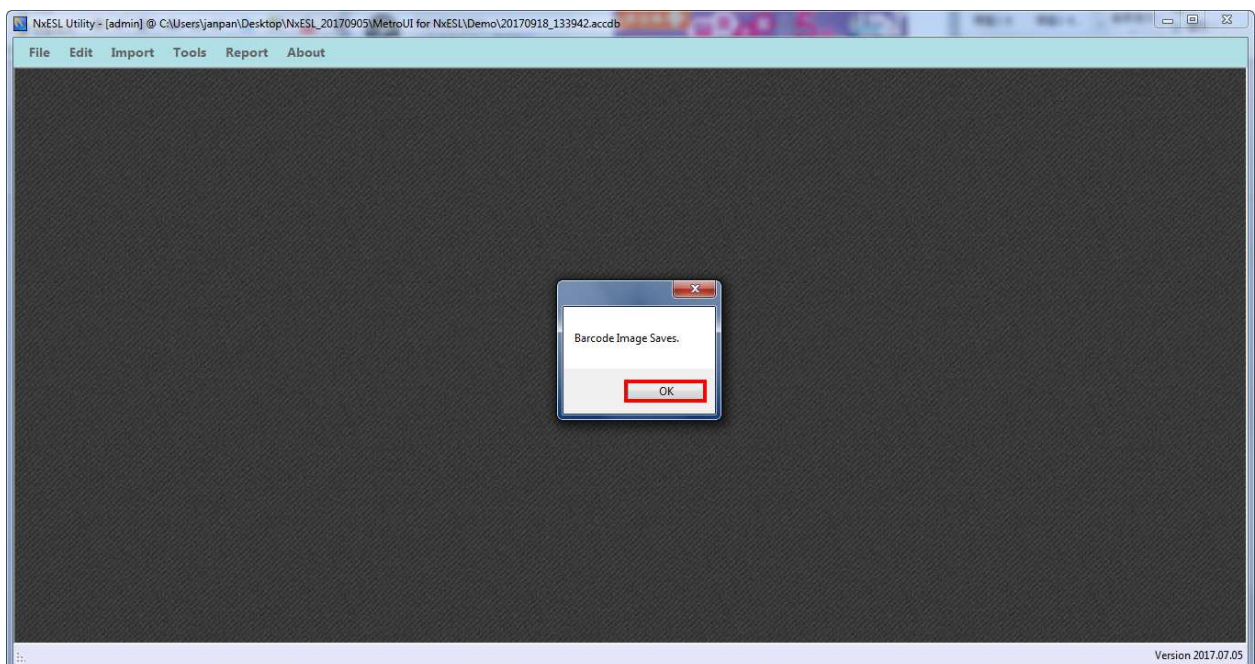
- 1) First of all, you have to print out the barcode instruction image. Please open NxESL.exe then click "report".
Report > Export BCR CMD Image



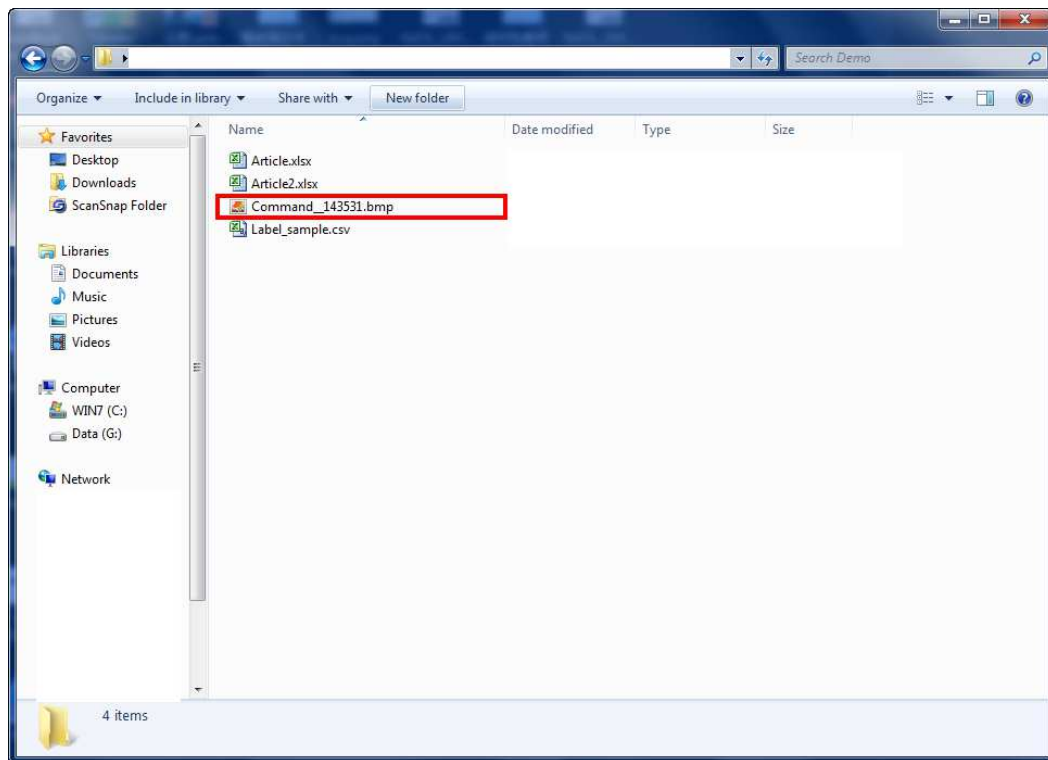
2) Save the image.



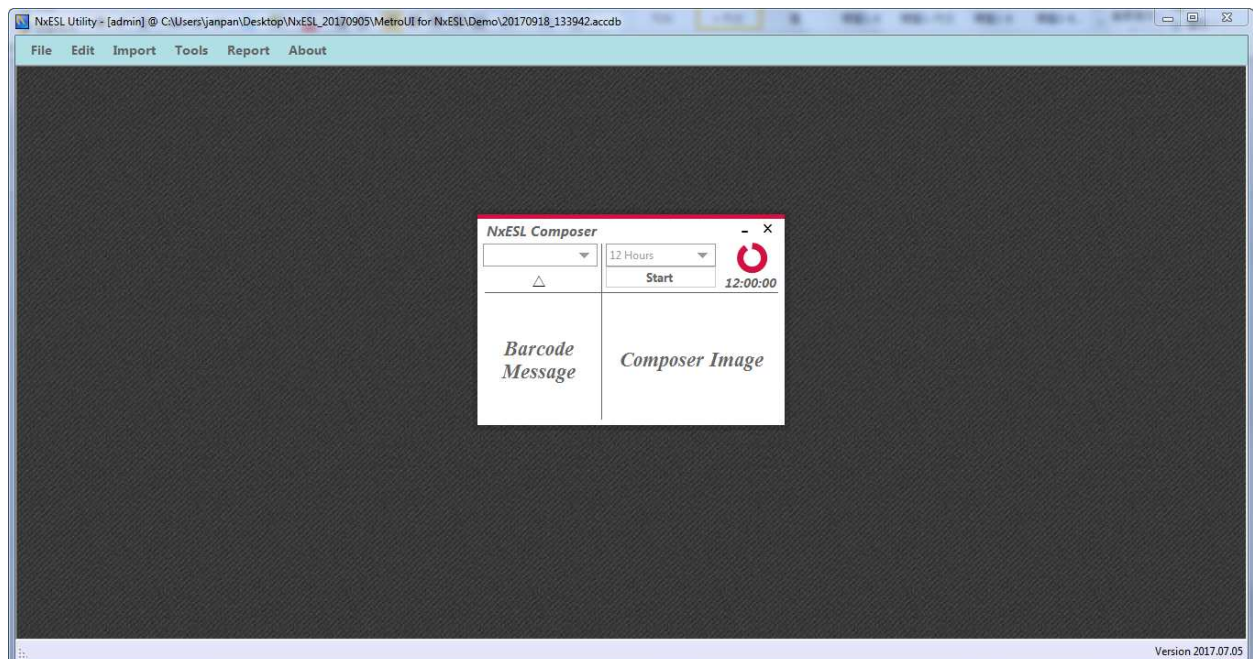
3) Click "ok".



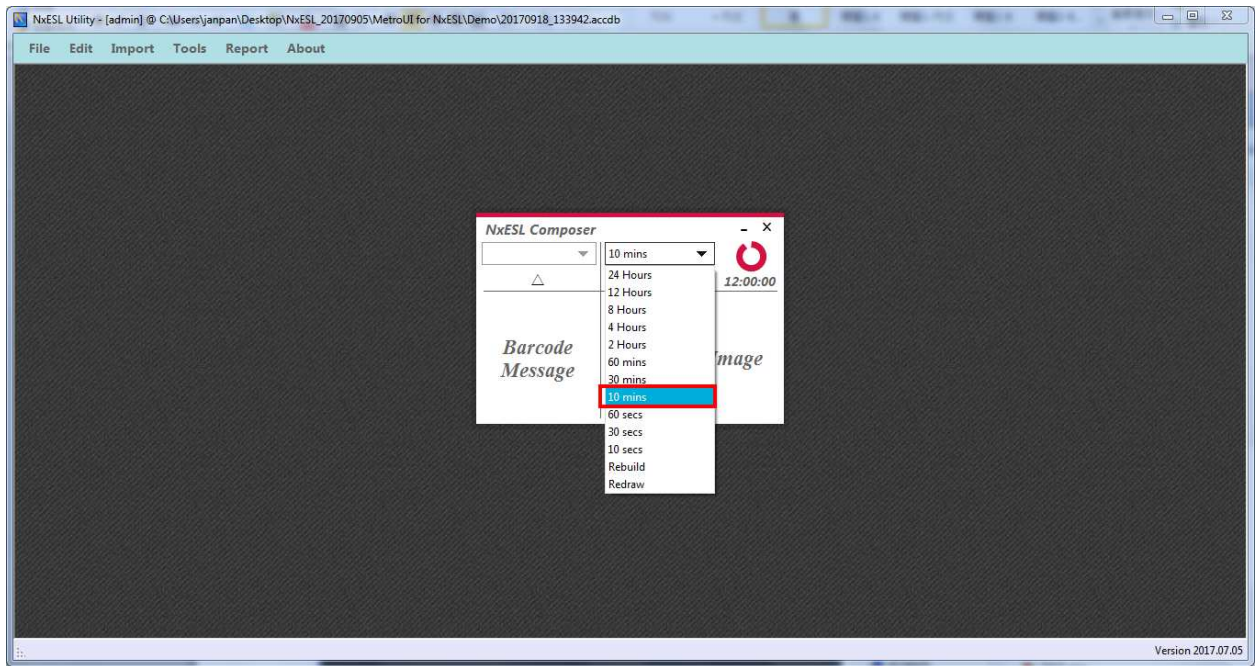
4) Open the image then print out.



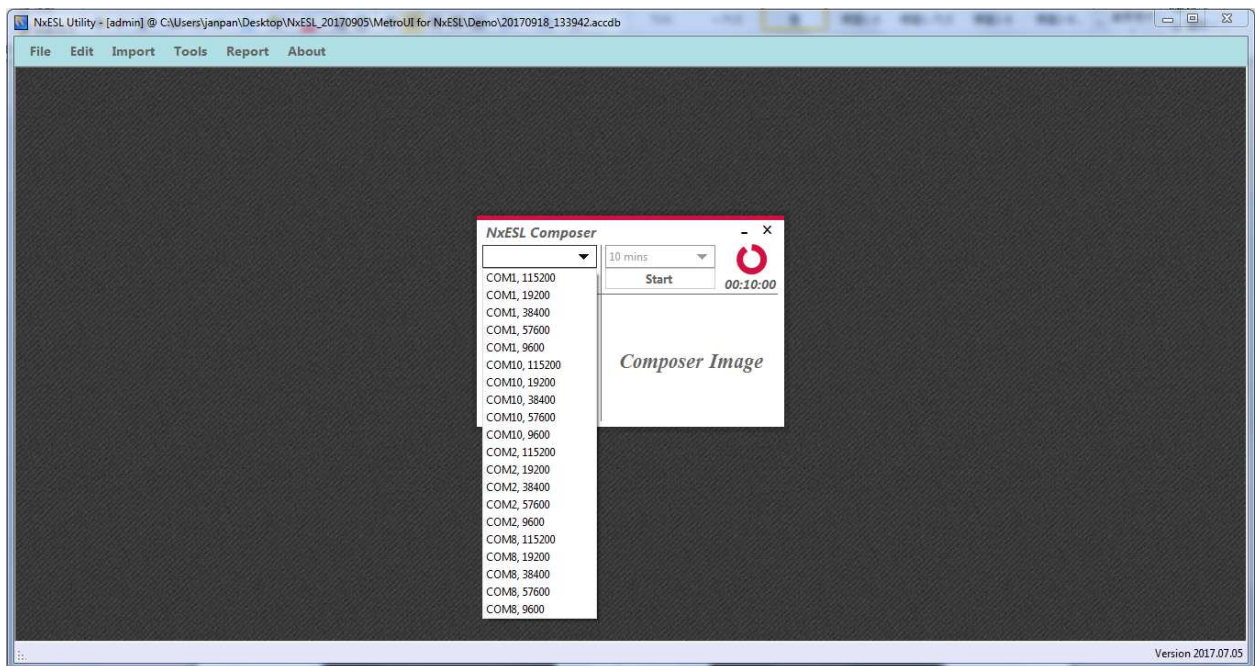
5) Please open composer.exe. and launch the program.
Tool > Composer Task



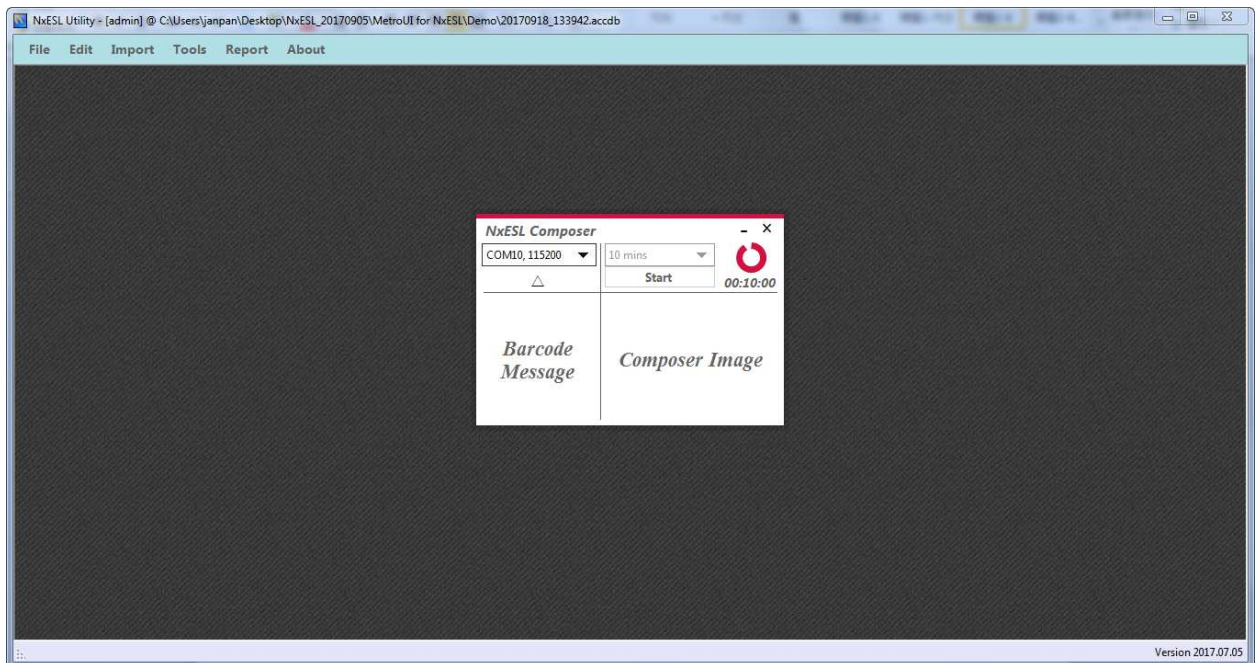
6) Click the drop down list and setting 10 sec (suggestion option). Click “start”.



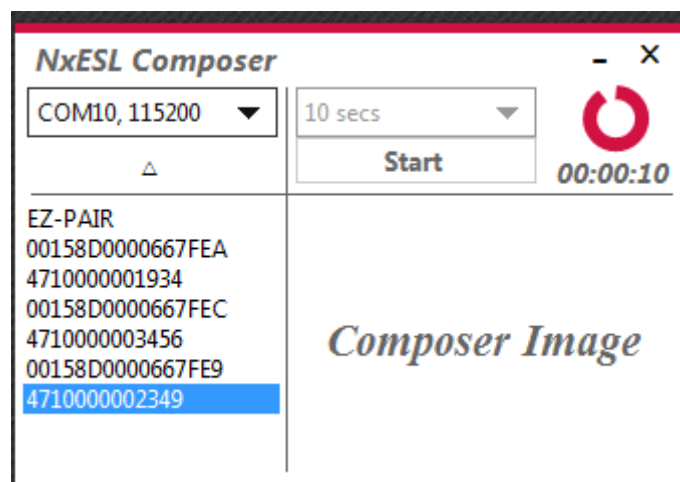
7) Choose the barcode scanner COM1.



- 8) After chooses barcode COMI, you will hear distinct sound that mean barcode scanner connect with the system already. (The sound is depends on the barcode scanner company setting.)



- 9) Follow way of operation of barcode. Each scan will show up on left side in popup-window. How we use “EZ-PAIR” barcode instruction as example to pair with three goods and three labels.
- 10) Scan EZ-PAIR > scan label barcode >scan good barcode >scan label barcode > scan good barcode > scan label barcode >scan good barcode >Scan EZ-MODE-EXIT



Barcode has ten instructions. these are displayed below table :

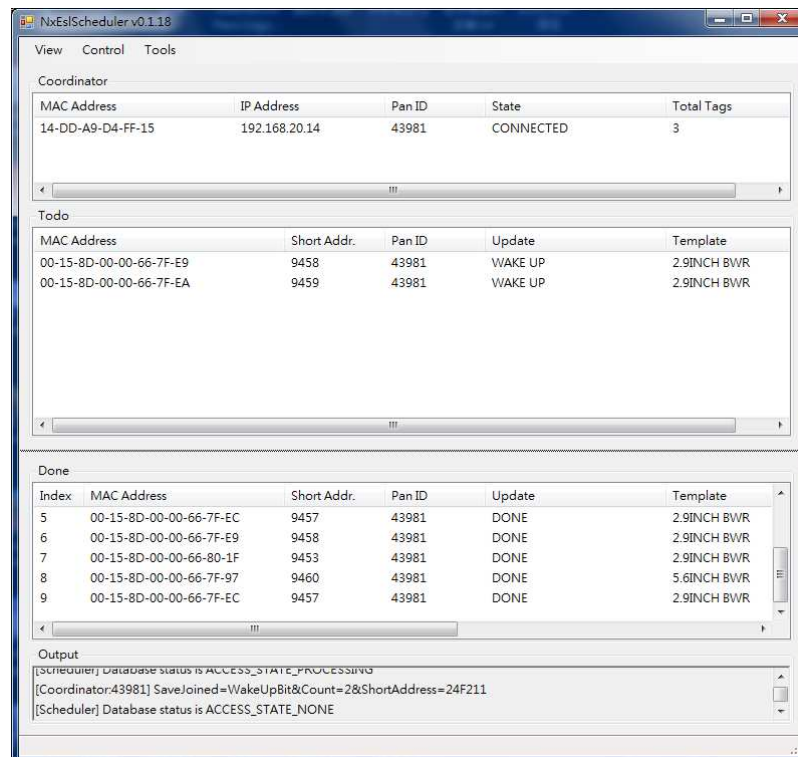
- ©Only one time or few times

Instruction	Way of Operation
PAIR	<ol style="list-style-type: none"> 1. Scan label barcode. 2. Scan good barcode. 3. Scan PAIR.
REFRESH	<ol style="list-style-type: none"> 1. Scan label barcode. 2. Scan REFRESH.
ACTIVATION	<ol style="list-style-type: none"> 1. Scan label barcode. 2. Scan ACTIVATION.
DEACTIVATION	<ol style="list-style-type: none"> 1. Scan label barcode. 2. Scan DEACTIVATION.
CANCEL	<ol style="list-style-type: none"> 1. Scan label barcode. 2. Scan CANCEL.

◎Numerous labels need to update info.

Instruction	Way of Operation
EZ-PAIR	<ol style="list-style-type: none"> 1. Scan EZ-PAIR. 2. Scan label barcode. 3. Scan good barcode. 4. Repeat 2 and 3 motion scan in sequence until finish. 5. Scan EZ-MODE-EXIT.
EZ-REFRESH	<ol style="list-style-type: none"> 1. Scan EZ- REFRESH. 2. Scan need update info of labels. Until those labels was scanned totally. 3. Scan EZ-MODE-EXIT.
EZ-ACTIVATION	<ol style="list-style-type: none"> 1. Scan EZ-ACTIVATION. 2. Scan need launch of labels. Until those labels was scanned totally. 3. Scan EZ-MODE-EXIT.
EZ-DEACTIVATION	<ol style="list-style-type: none"> 1. Scan EZ-DEACTIVATION ° 2. Scan need stop using of labels. Until those labels was scanned totally. 3. Scan EZ-MODE-EXIT.
EZ-MODE-EXIT	<ol style="list-style-type: none"> 1. Each time the end of launch EZ mode after sca“EZ-MODE-EXIT” instruction.

11) Running NxEsScheduler (refer to 3 >3.2 >3.2.6 NxEsScheduler)



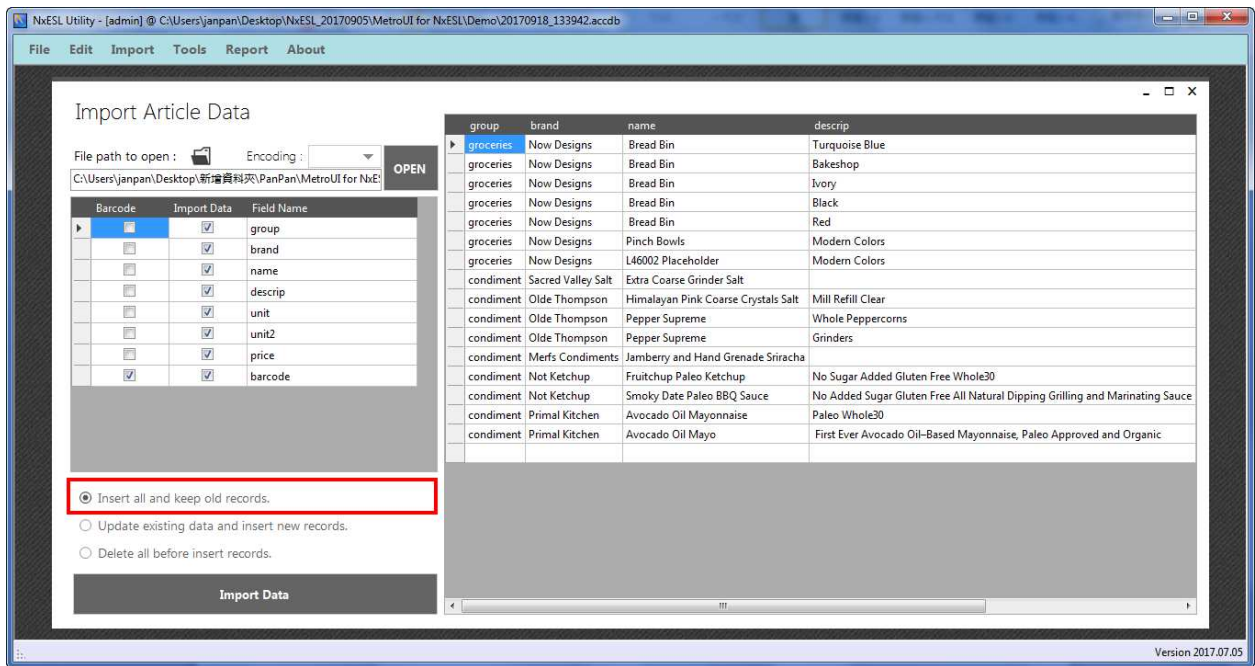
3.4 Other

3.4.1 Import data of goods

➤ Option I Using import

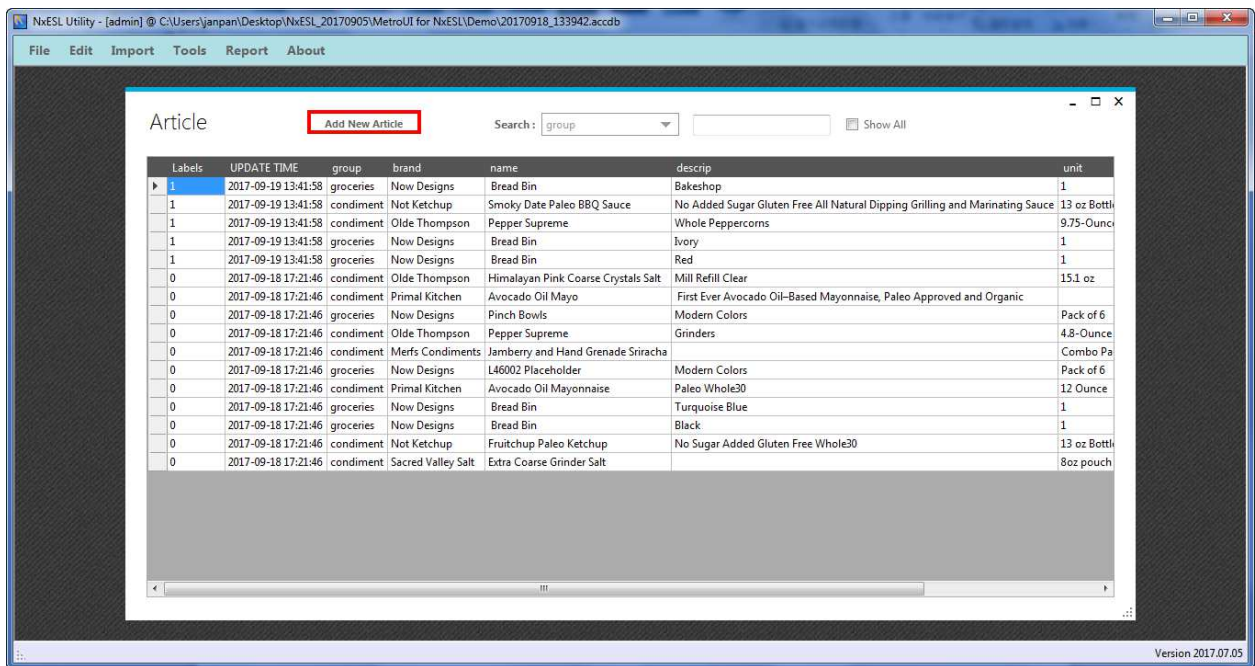
When you need to add lots of goods or update goods information you could use “import” to add or update.

Import > Article > open information of article > Open > chose “Insert and keep old records” > Import Data.

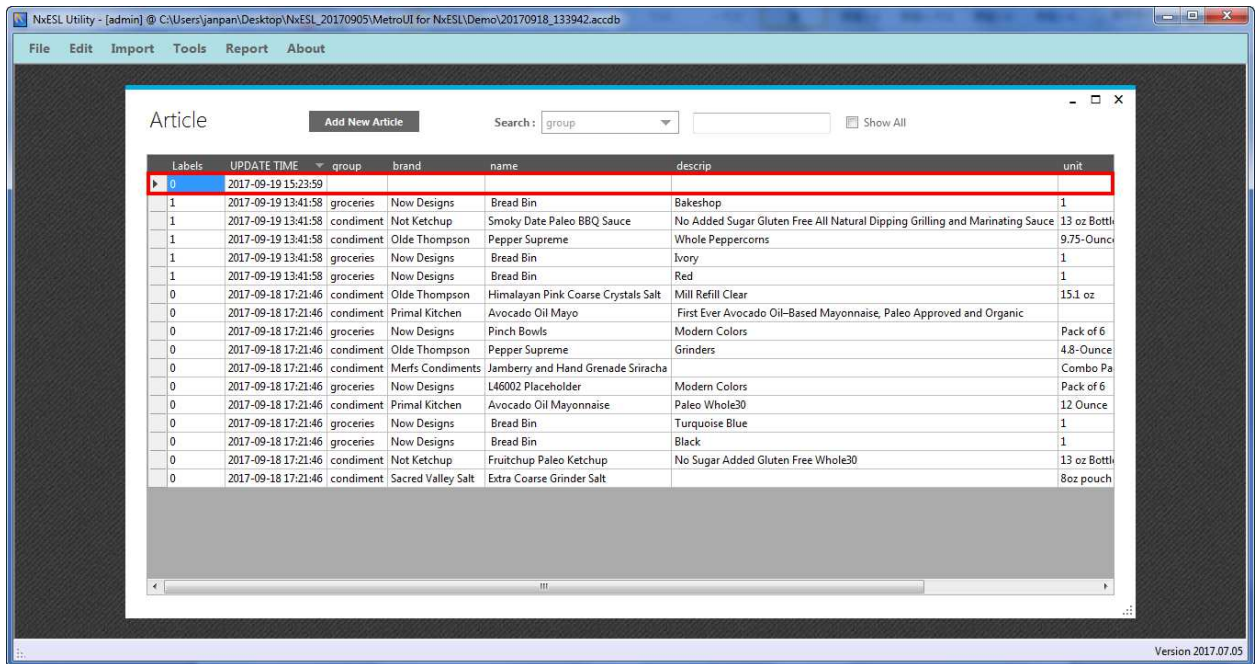


➤ Option II Manual

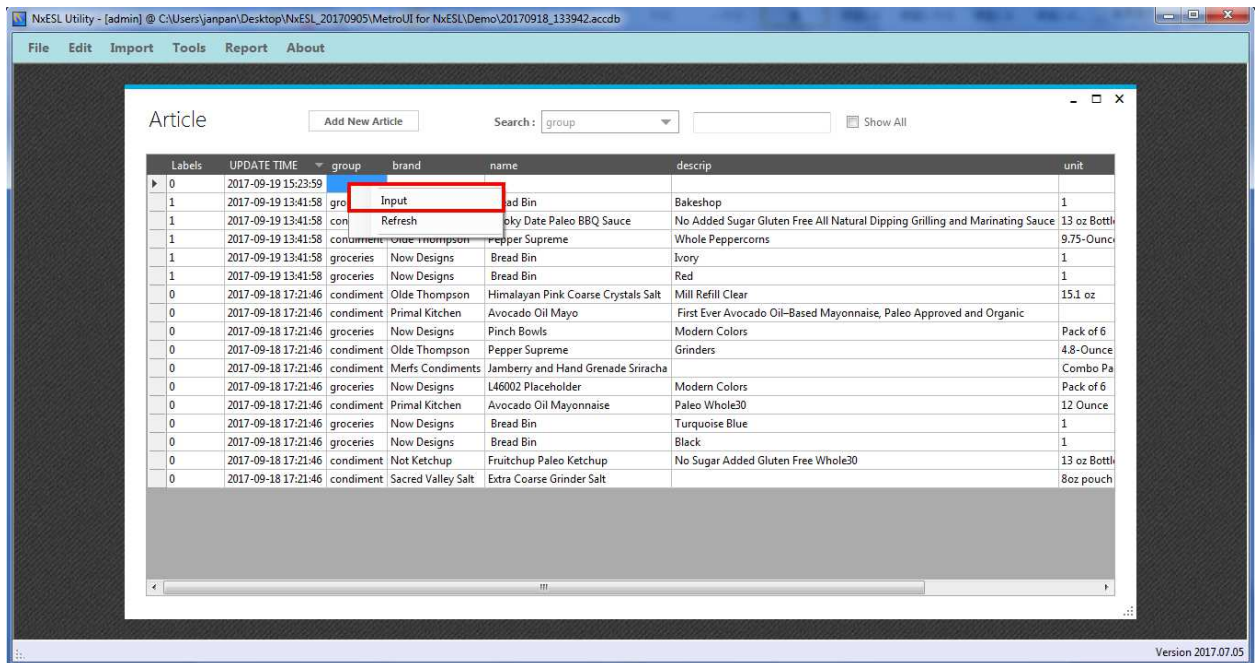
Edit > Article > Add New Article



Show up empty column.



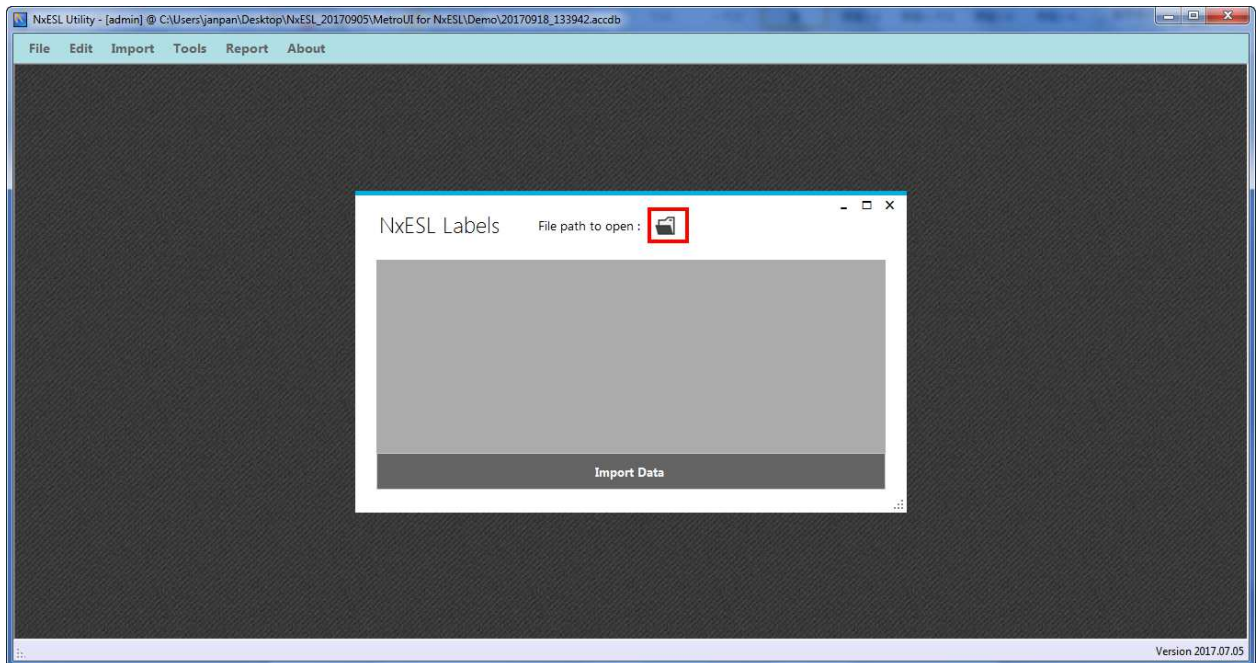
You can right-click on empty column. There will show up option then select “input” and fill in information of goods. You also can right-click to fix goods information.



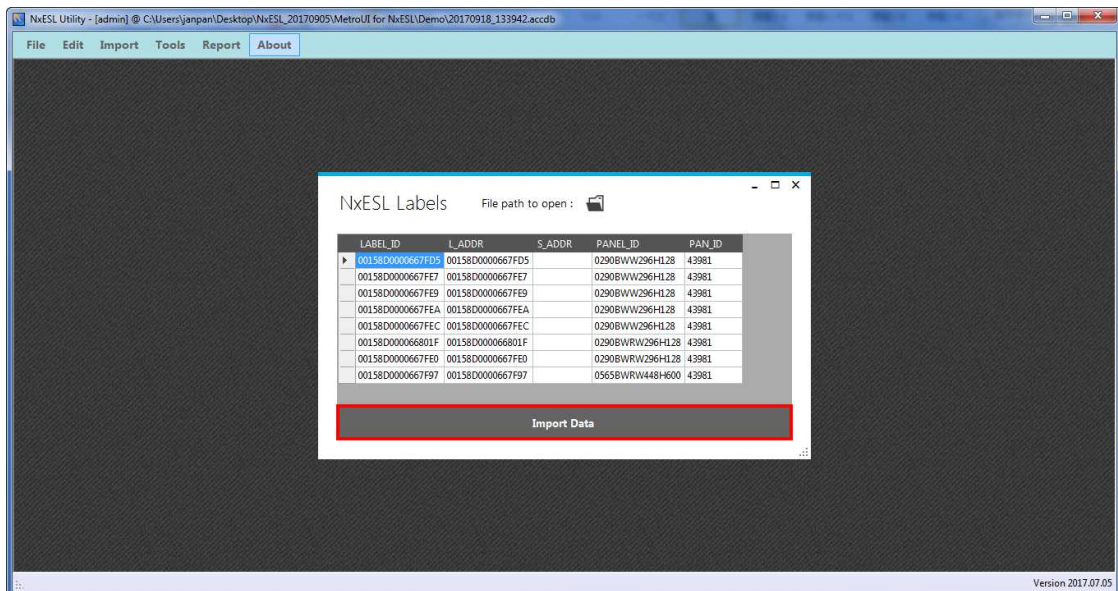
3.4.2 Importing data of label

- Only use import function can add data of labels.

Edit > Labels > File path to open



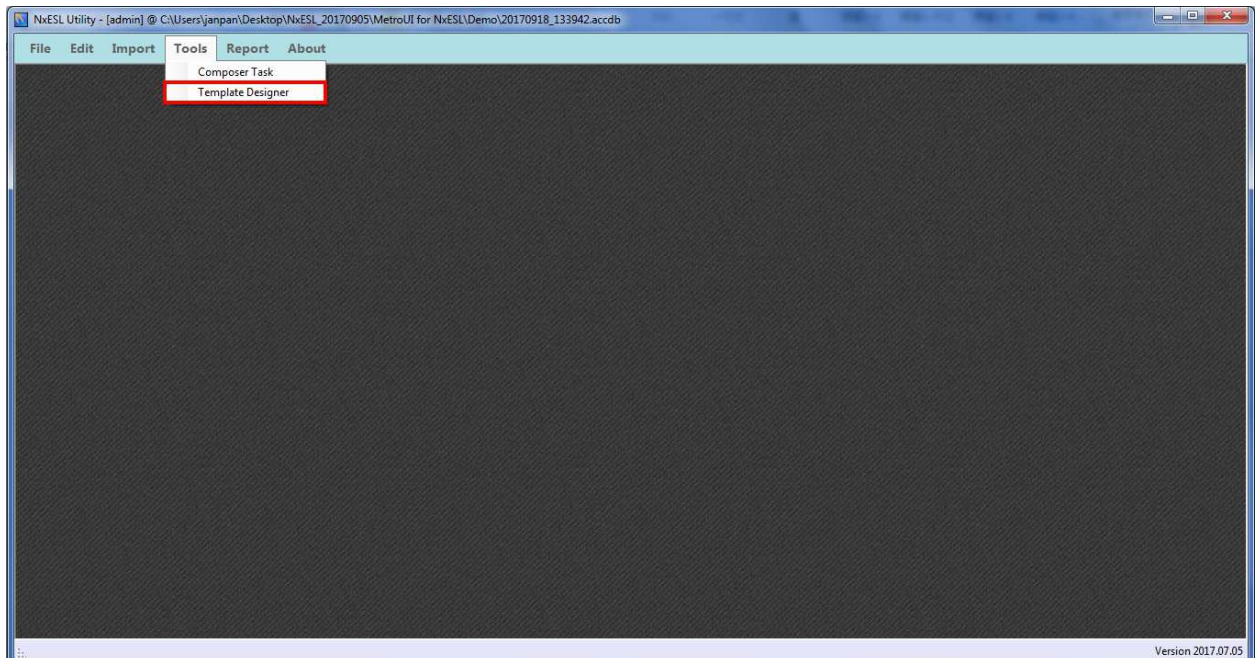
Click “Import Data”.



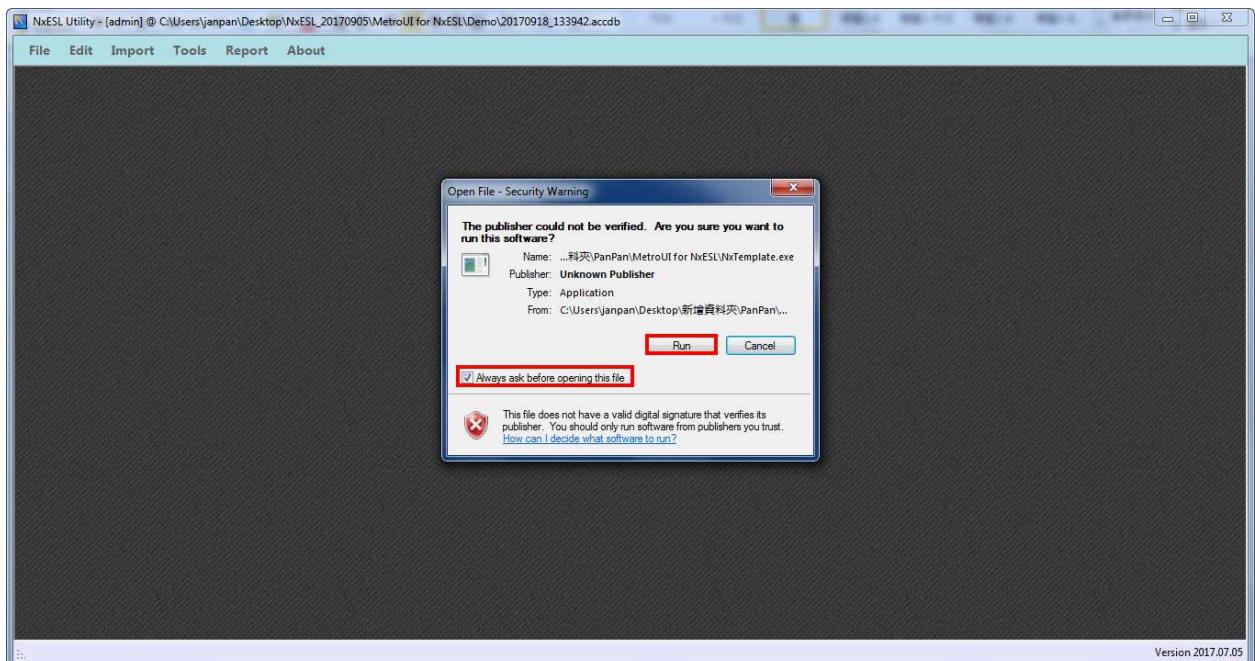
3.4.3 Design template

➤ Template interface

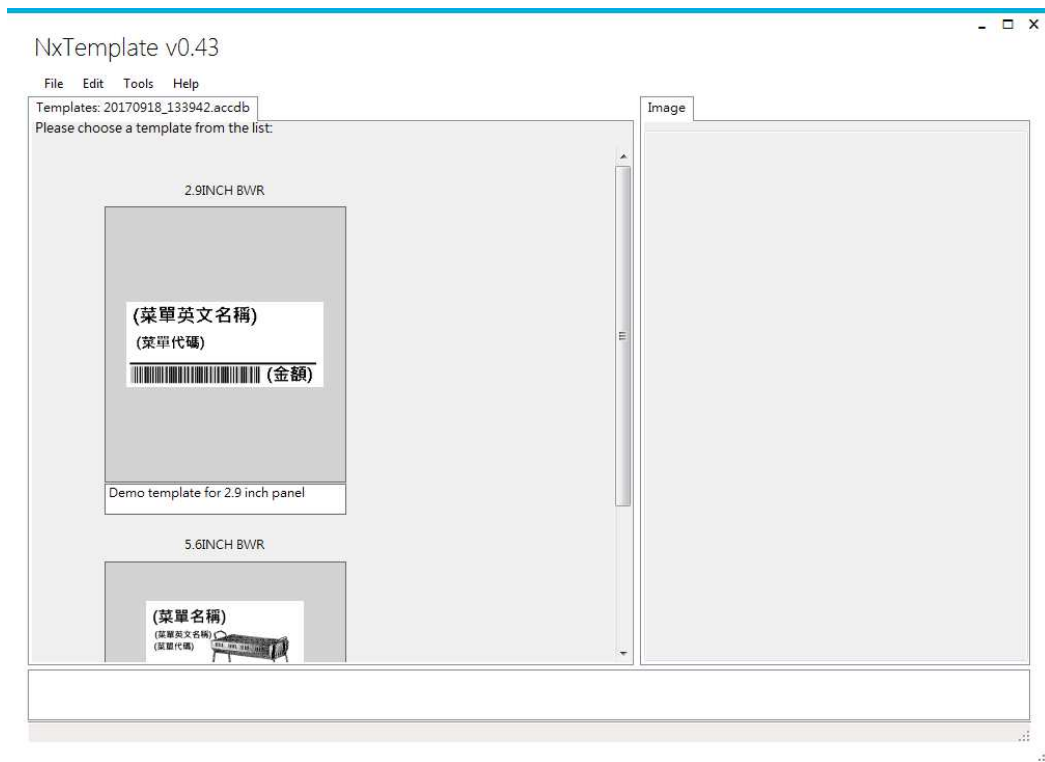
Click Tool > Template Designer



Please cancel tick and click run.

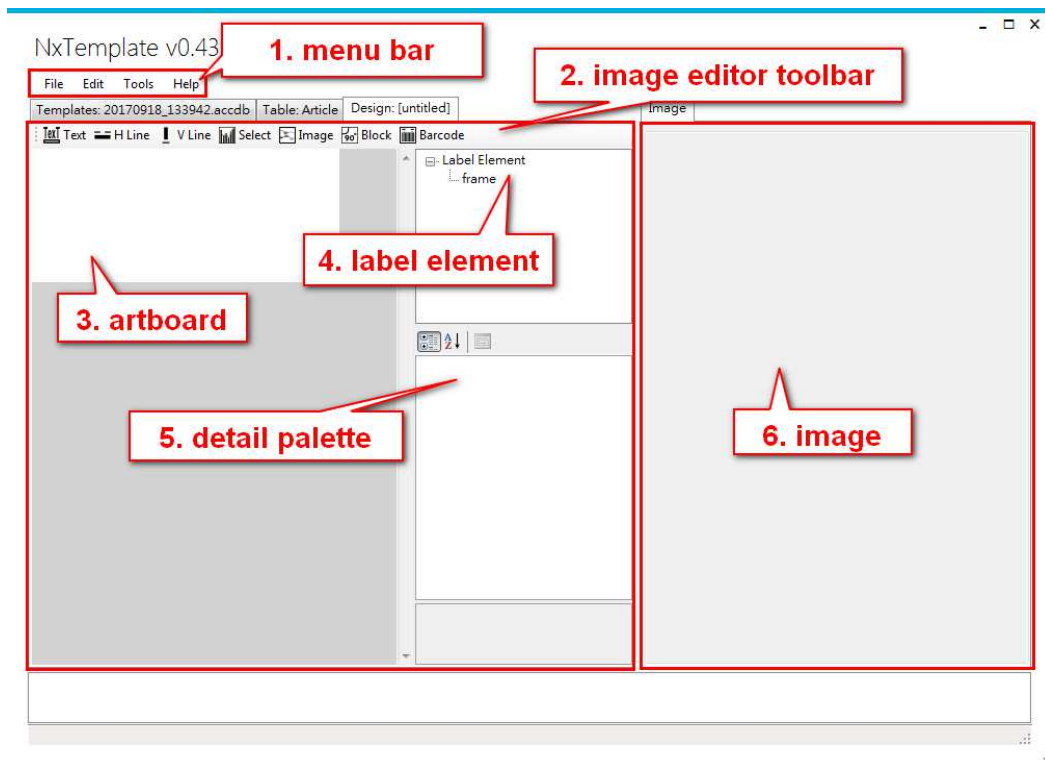


You will see NxTemplate.exe.



➤ Edit new template.







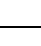
- Please click "file" than choses "new". You will see the image below:



Menu bar function is below :

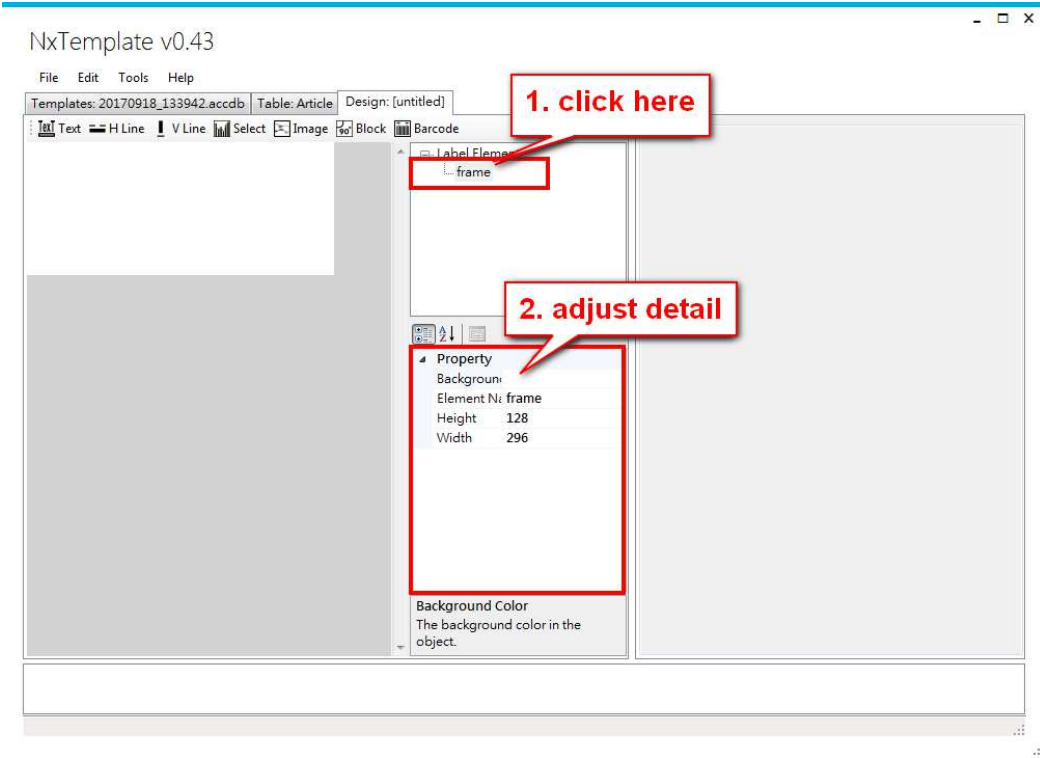
Function	Item	Content
File	New	Open new template
	Save	Save template
	Save as	Save as other template
	Exit	Exit the program
Edit	Undo	Back to previous step
	Redo	Recovery
	Delete	delete
	To Upper Layer	Move to upper layer
	To Lower Layer	Move to next layer
Tools	Render Template	Preview template
	Settings	Chose other database
Help	View Help	Help
	About	About

Image editor bar function description is from left to right :

icon	item	Content
	Text	Insert fixed word or icon. The word or icon are in every ESL content same. Such as unit, special offer, \$, ¥, €...etc
	horizontal line	Insert horizontal line. You can adjust some of detail in detail palette. Such as height, width, color and place.
	straight line	Insert straight line. You can adjust some of detail in detail palette. Such as height, width, color and place. It is height limited to 100.
	Select	Insert flexible word. The word is ESL content vary with the goods. Such as good name, price, good description...etc.
	image	Insert image. You can adjust some of detail in detail palette. Such as height, width, color, place and selecting image.
	block	Insert block. You can adjust some of detail in detail palette. Such as height, width, color and place.
	barcode	Insert barcode. Depends on your need. To select barcode source and digital in detail palette.

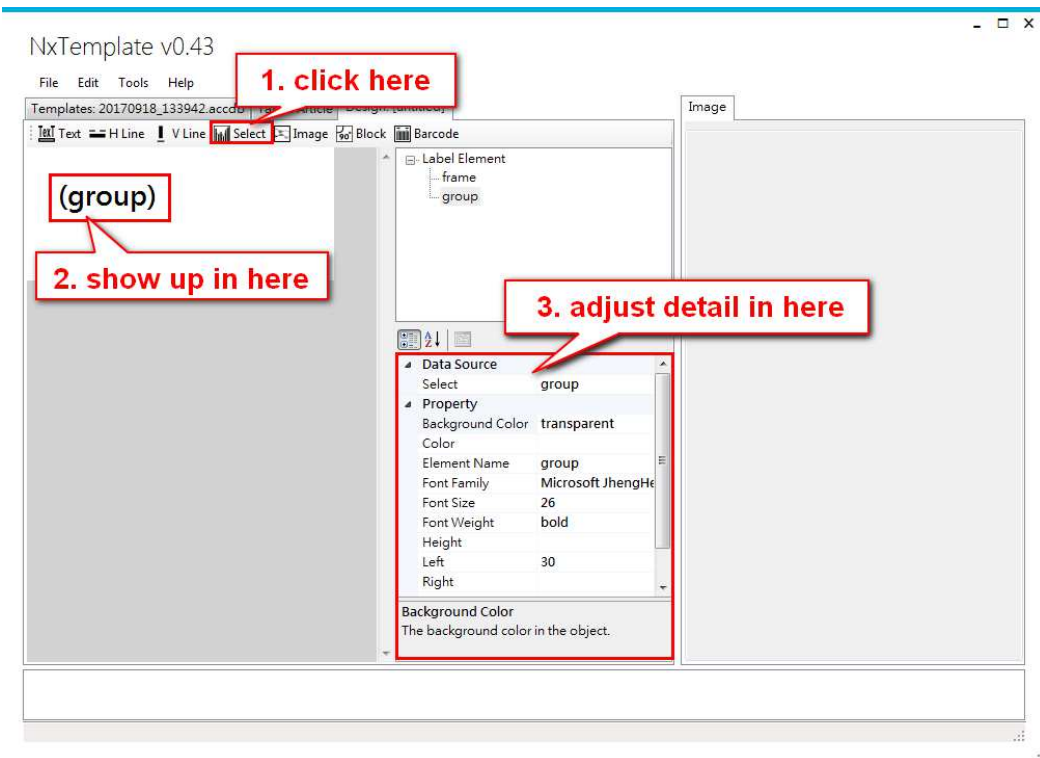
➤ Design new template

This package has two kind of size of ESL. When you add new template you must to adjust size for real requirement. So you can adjust height and width in property as figure below.

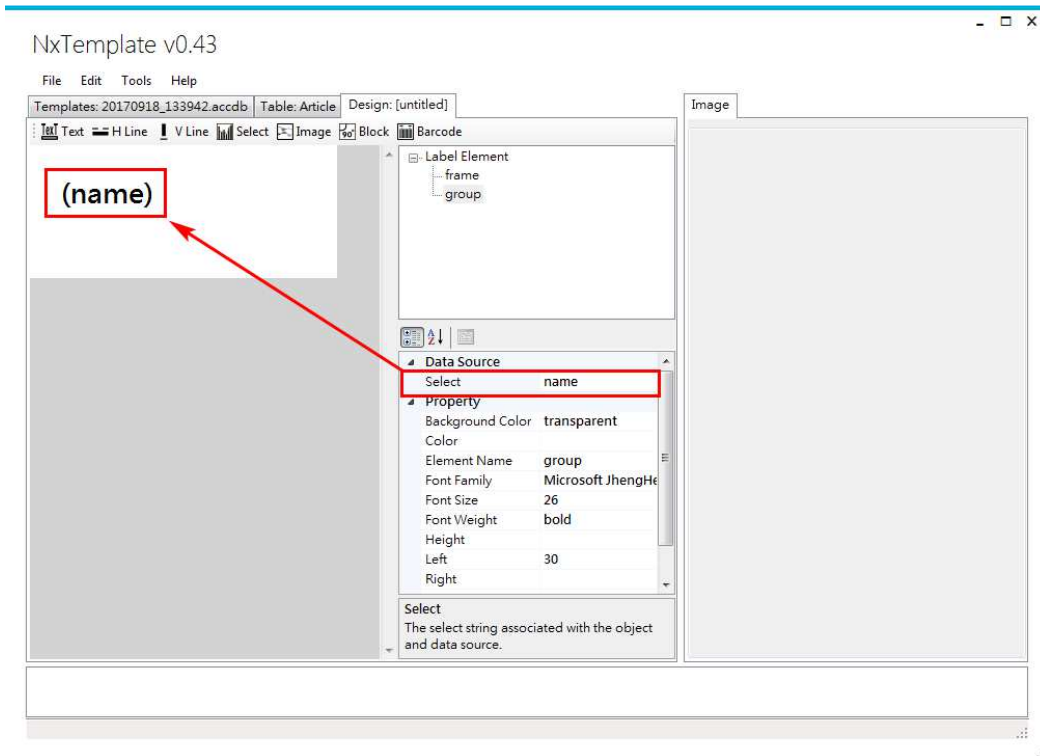
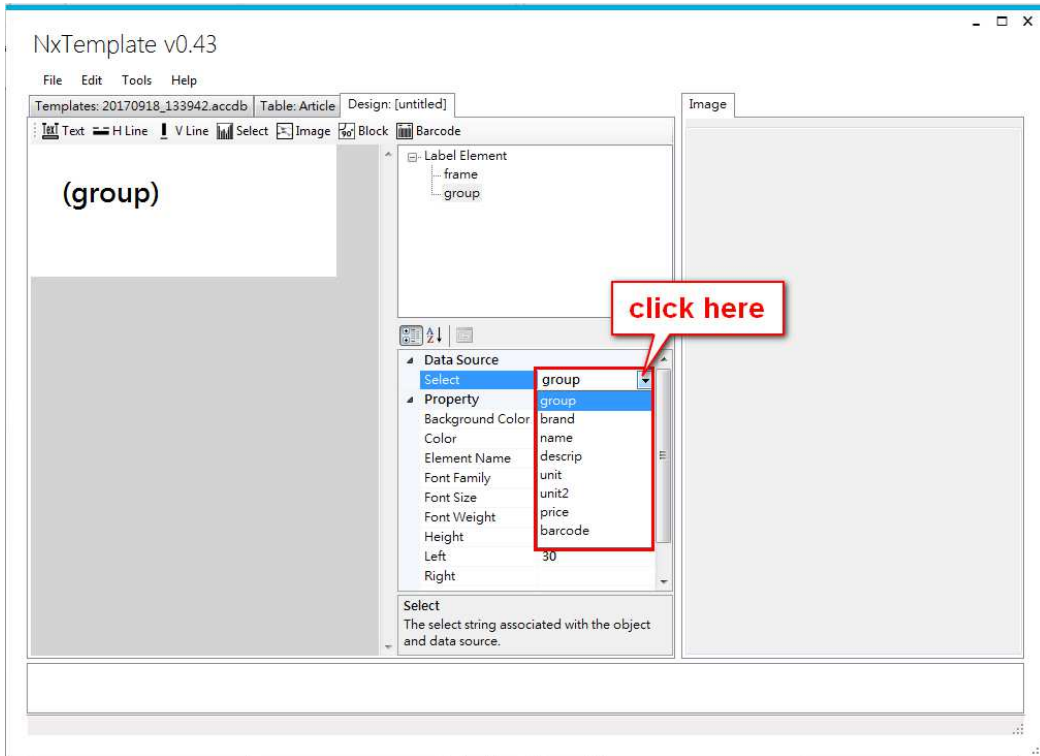


【Select】

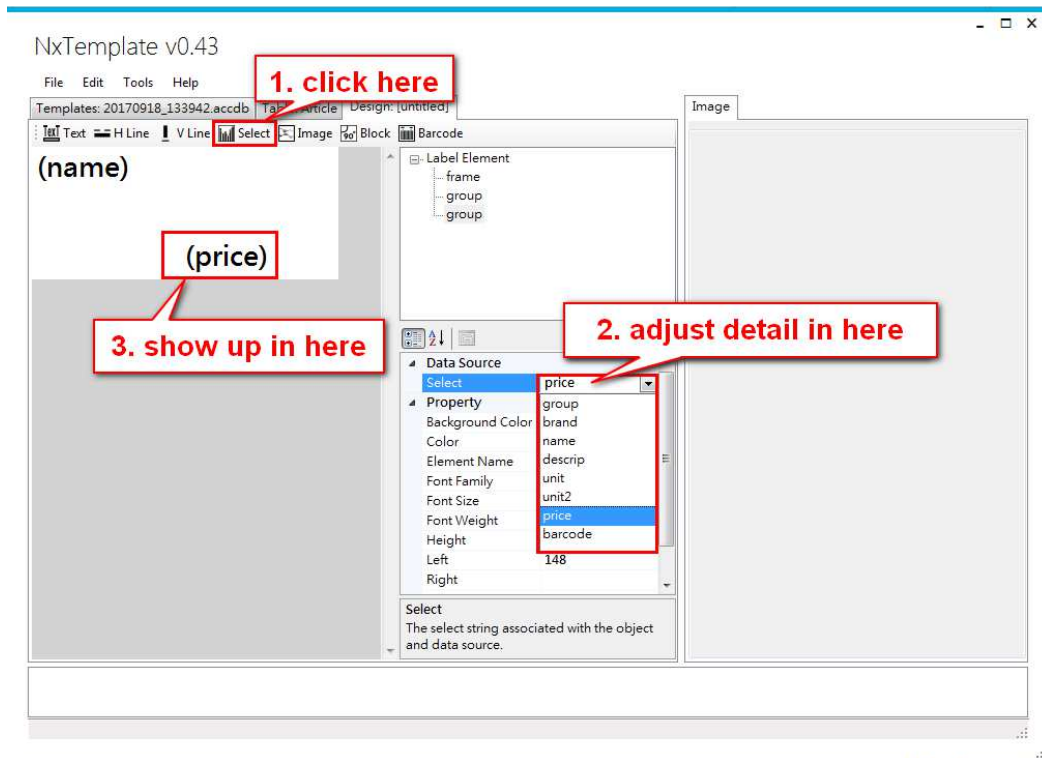
First, to click “select” then adjust detail about the word. You also can use mouse to move.



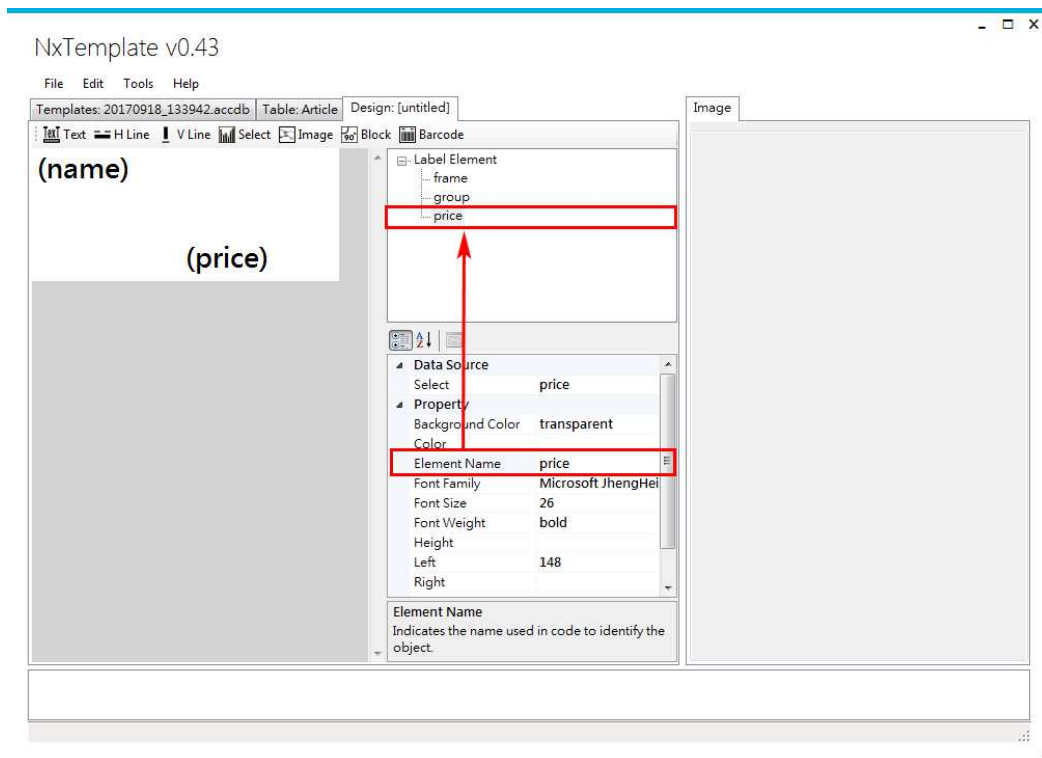
Click drop down list of data source in detail palette. The source is depends on what is your requirement. The source will read from database and display in template. Example is use name as data source.



Click “select” again. To adjust detail that is about the data source. There will display “price”.

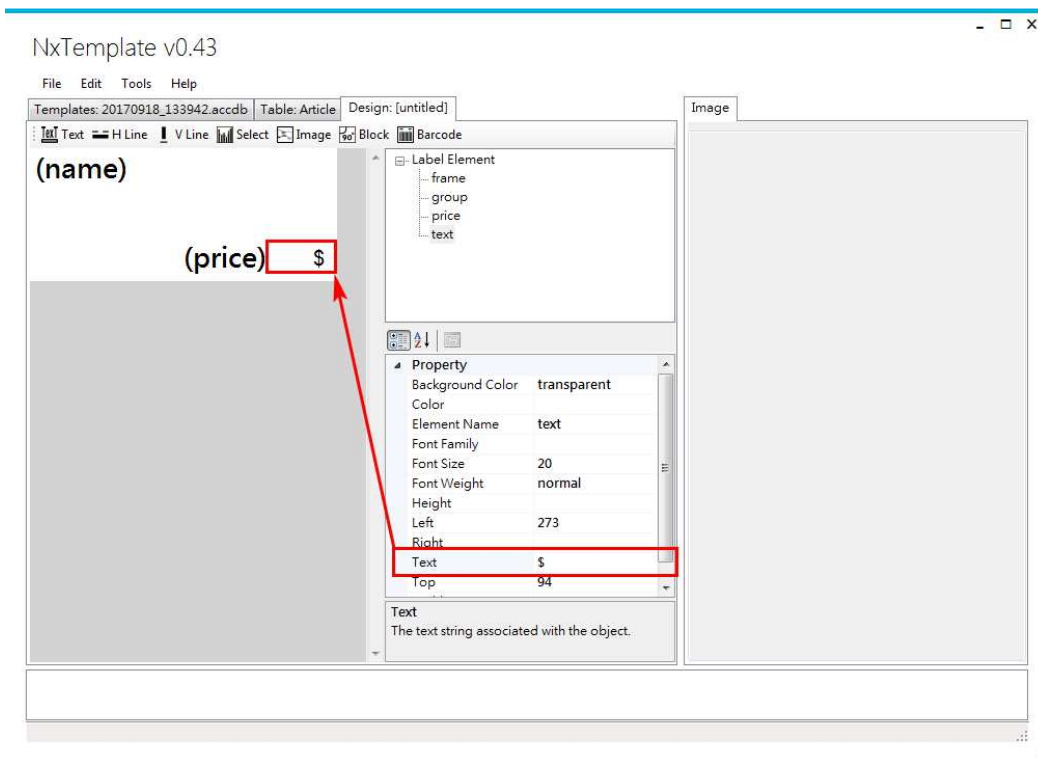
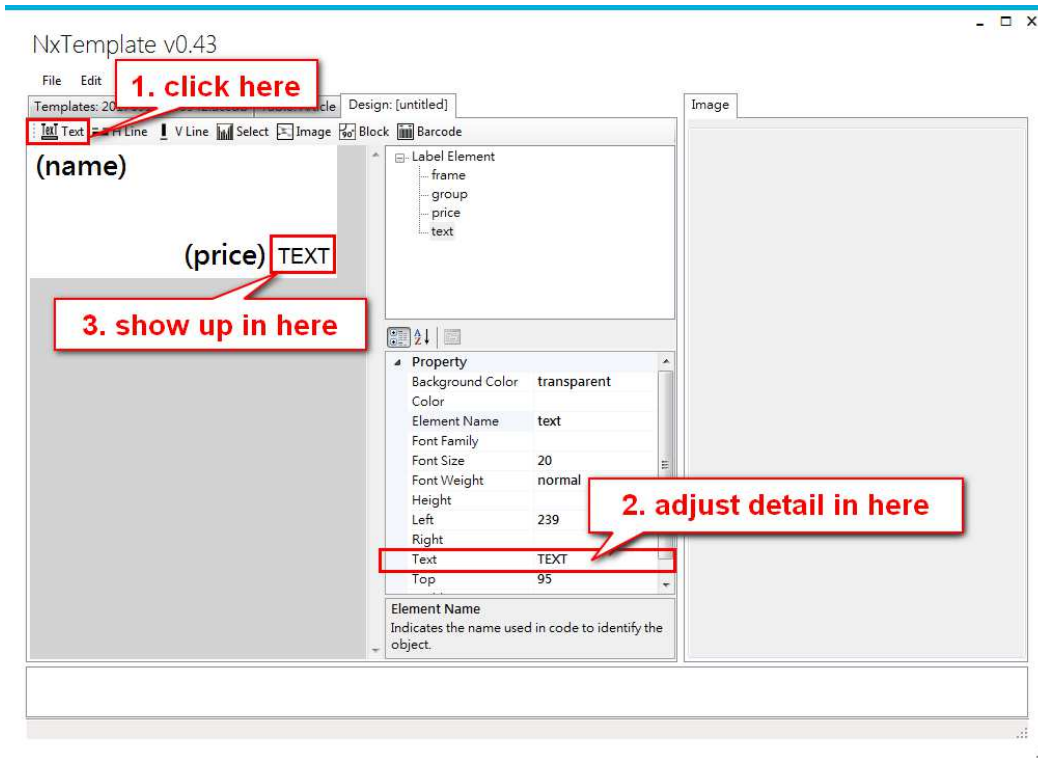


To adjust name of Element Name to become with price then name of Label Element is also change.

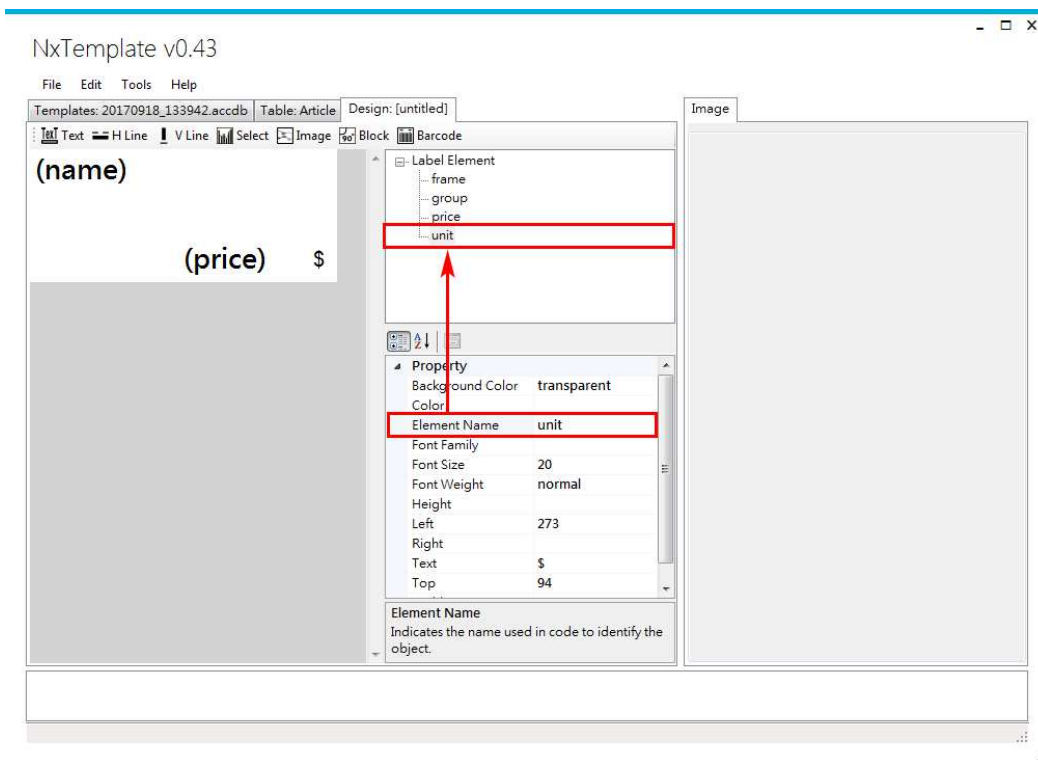


【Text】

To click icon of text then it will display in art board. In art board to adjust name of text become with money icon. The name of text of art board is change from name of text in detail palette.

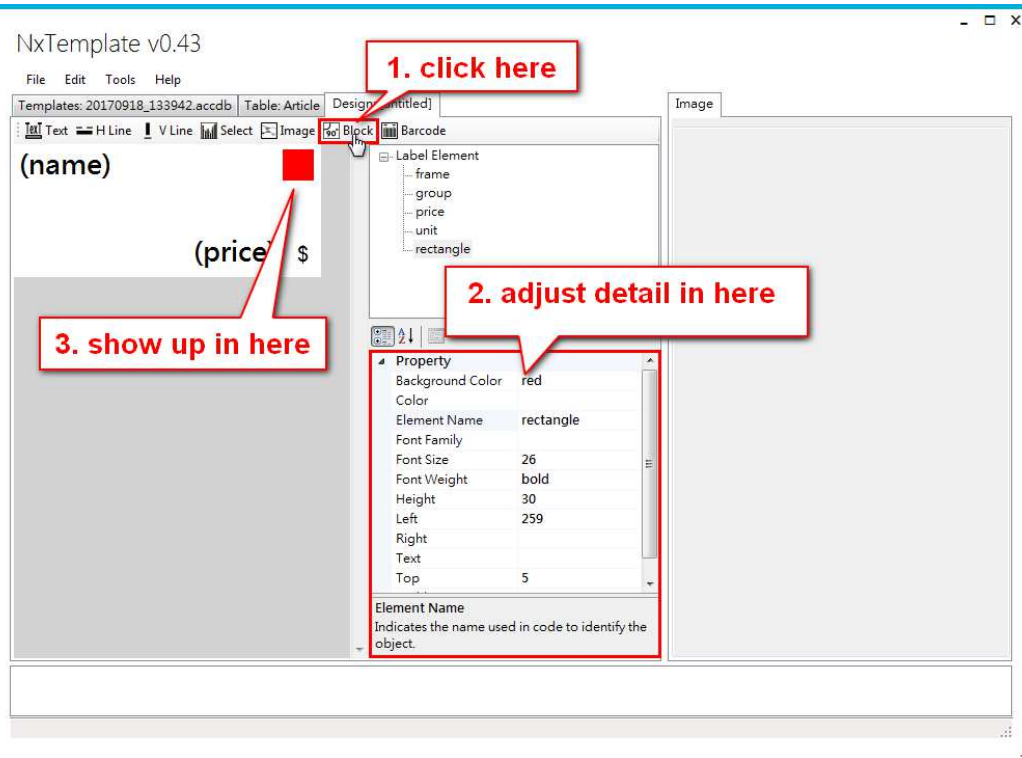


To adjust name of Element Name become with unit then name of Label Element is also change.



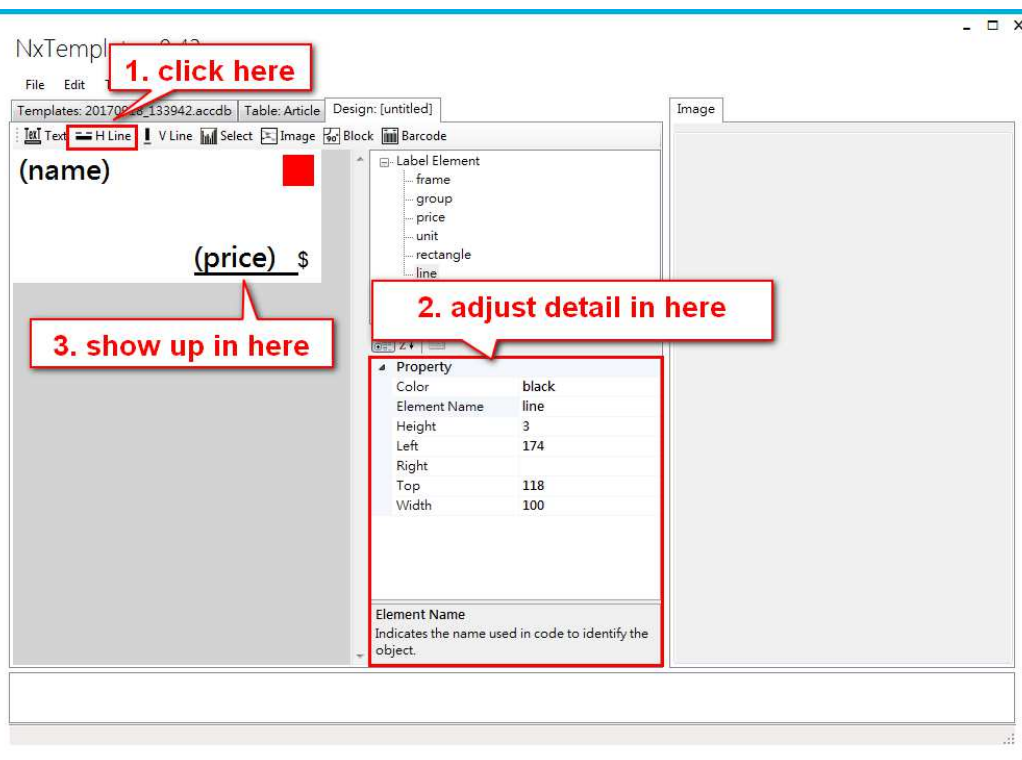
【Block】

To click icon of block then it will display in art board. Depends on what is your requirement then adjust the detail in detail palette. You can adjust color, background color and size. Please to attention the color, when you set color that must same as color of ESL. Because of ESL has two kind of color mode. One has black, white and red. The other one only has black and white.

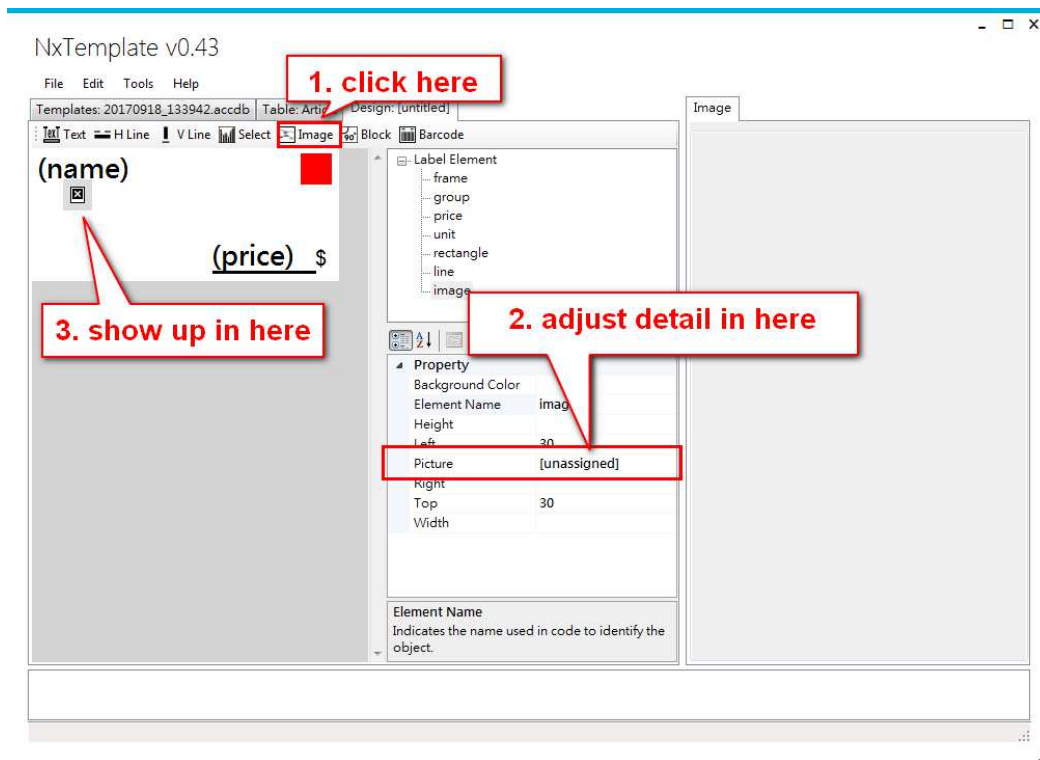


【Line- horizontal】

To click icon of horizontal line then it will display in art board. In detail palette, to change detail the horizontal line. You can adjust color, width, height and place.

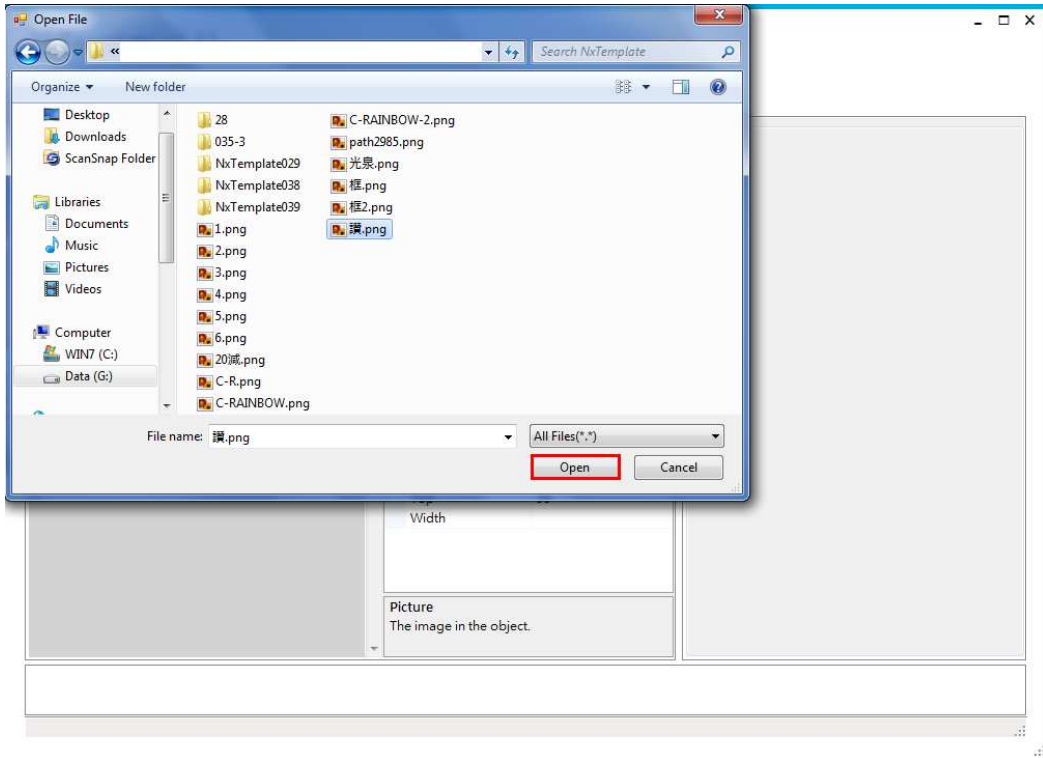


Click icon of image then it will display in art board. Select source of picture in detail palette.

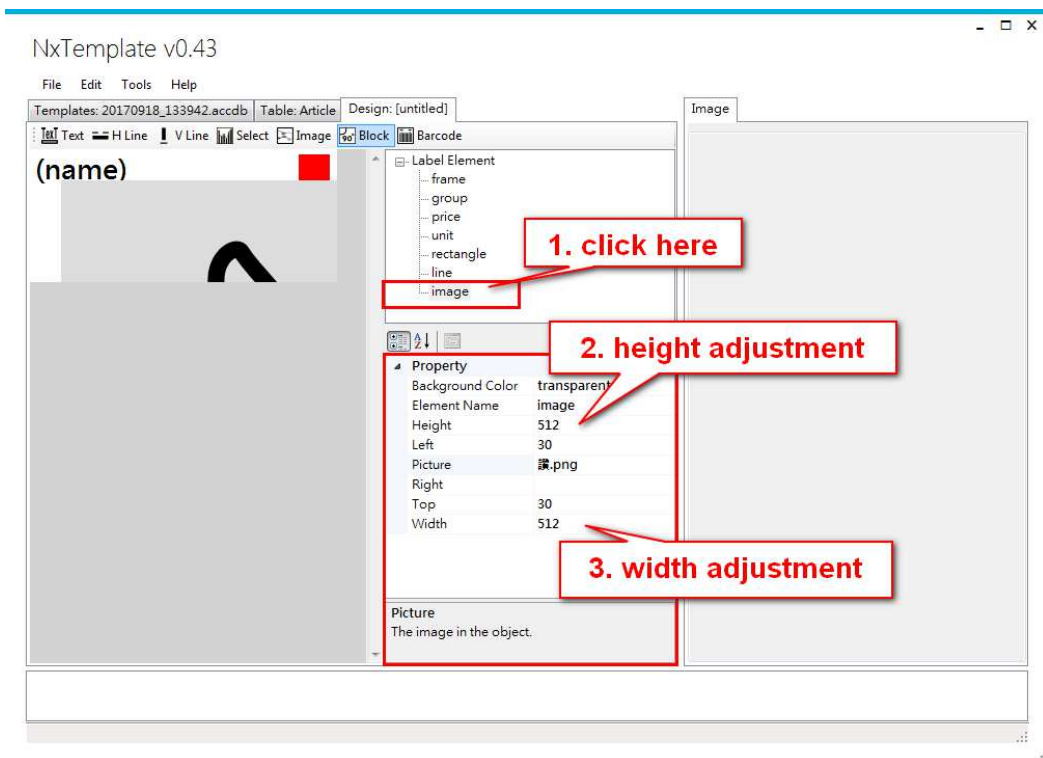


Choose picture then open it.

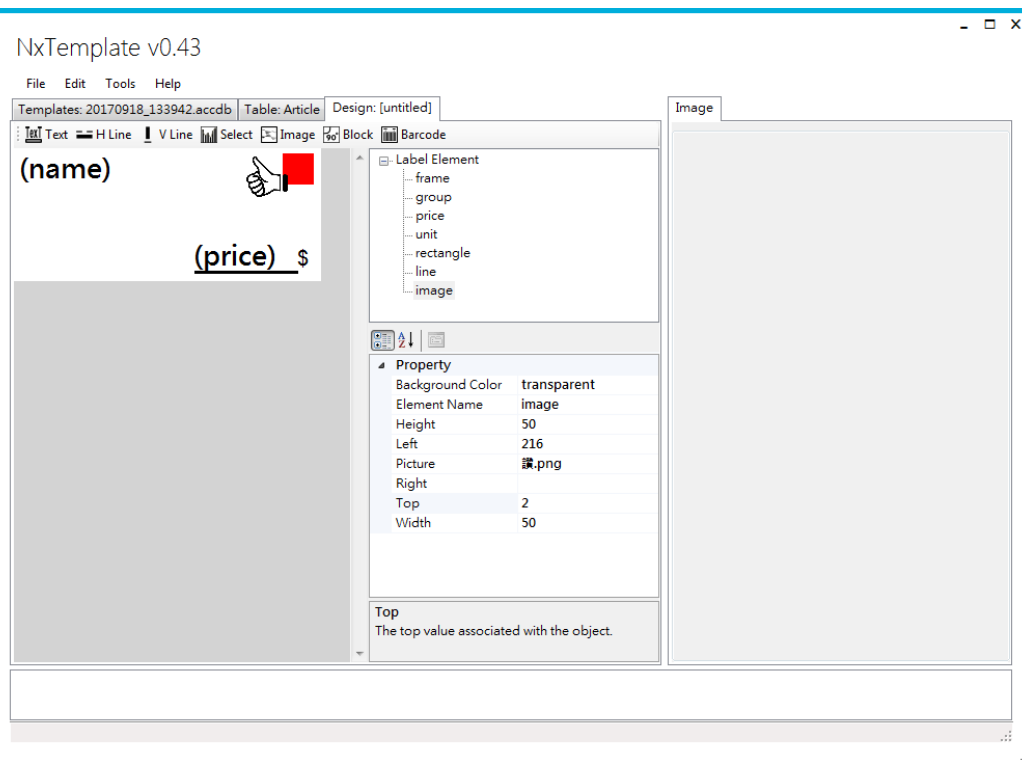
※If the ESL color only has black and white, you only can use black and white in design template.



Adjust height and width of image.



Use mouse to moving the image.

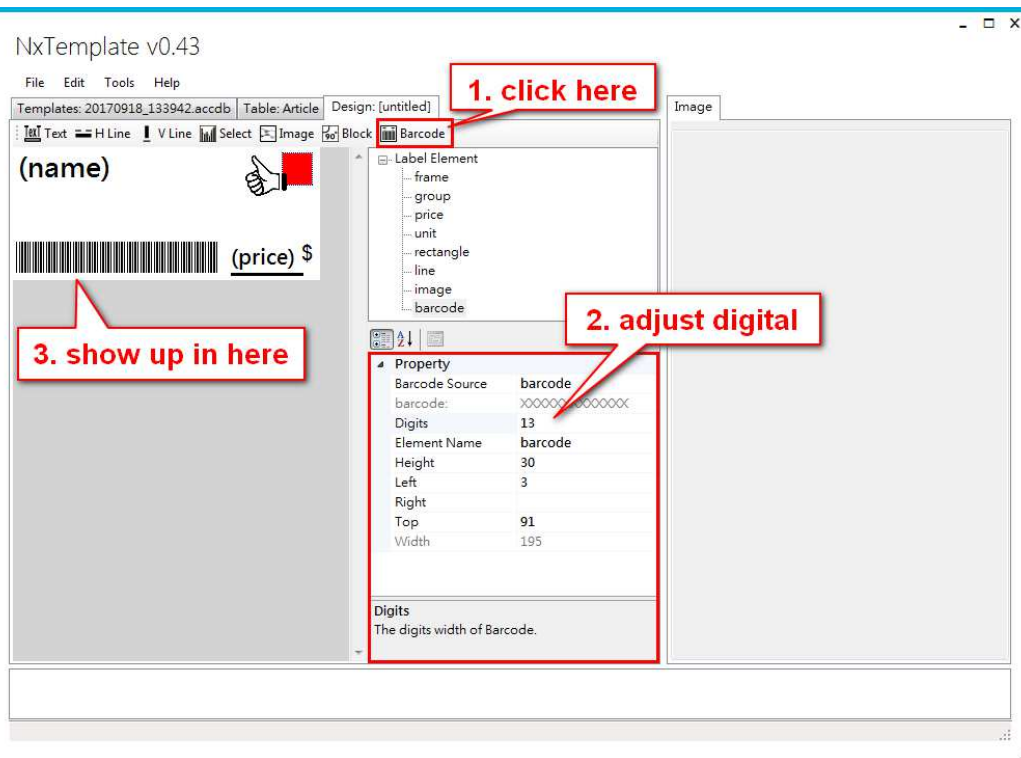


【Barcode】

Click icon of barcode then it is displayed in art board. You can adjust the barcode source and digital. In the example below that is barcode as source.

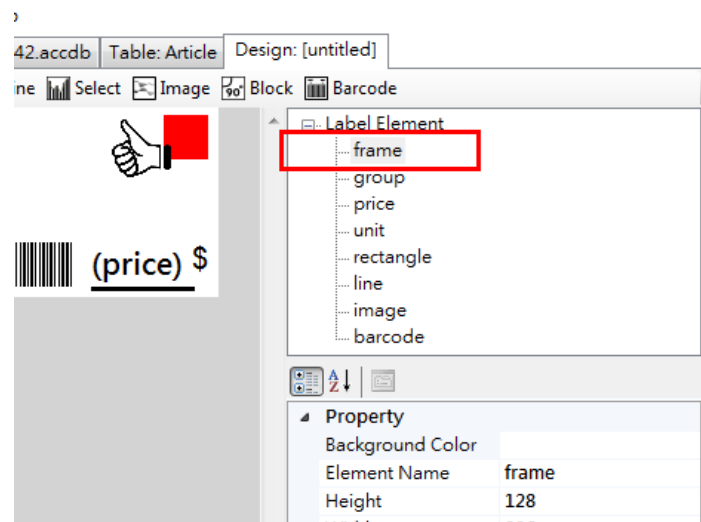
You do must to adjust the left or right. There are more than the 3 unit at least. Due to adjust, the image will able to read with barcode scanner.

The digital is following with International Barcodes rule to setting.



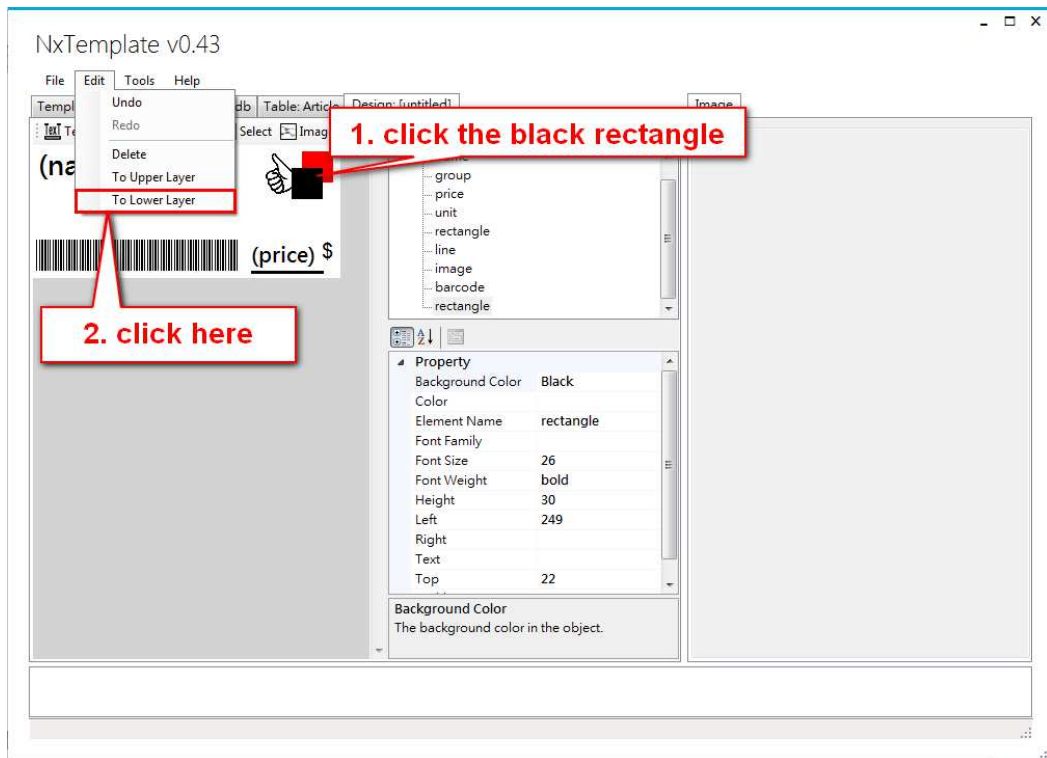
【Move layer】

If the layer is lower, the location is high in the label element area. Such as the frame is lowest layer so it is highest in the label element area.

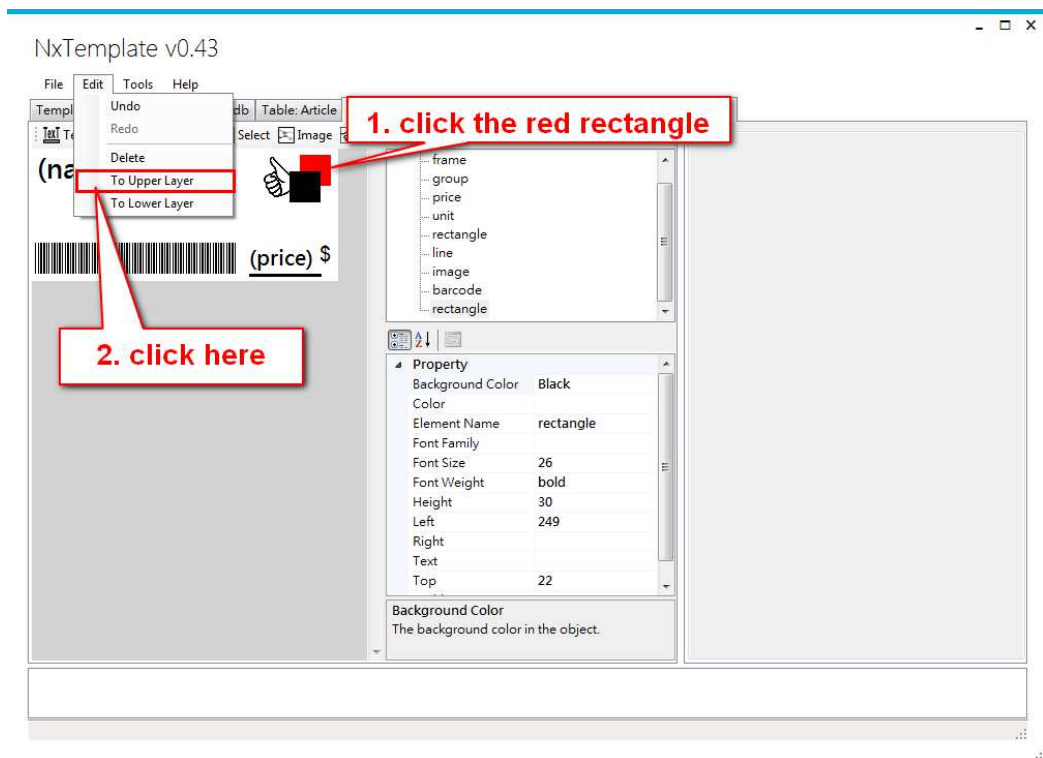


So we have to move the black block under the red color block.

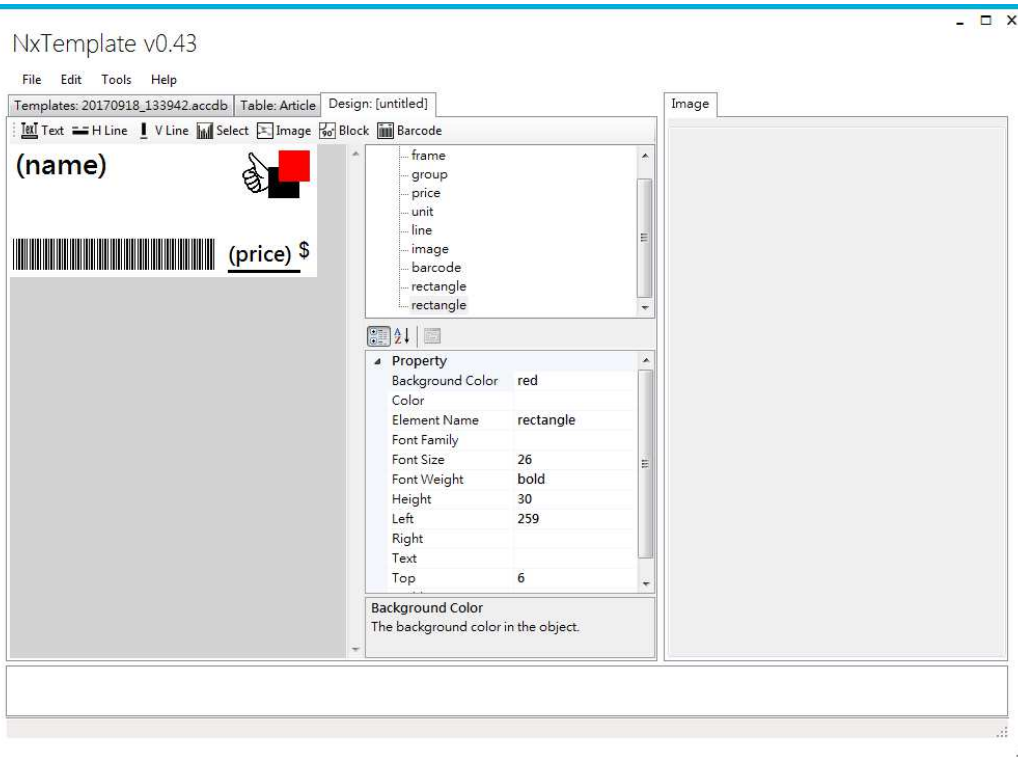
You click the black rectangle then click "to lower layer" option. Until the black block is under red block. (Edit > to lower layer)



Or you can click red block then click “to upper layer”. Until the red block cover the black block. (Edit > to upper layer)

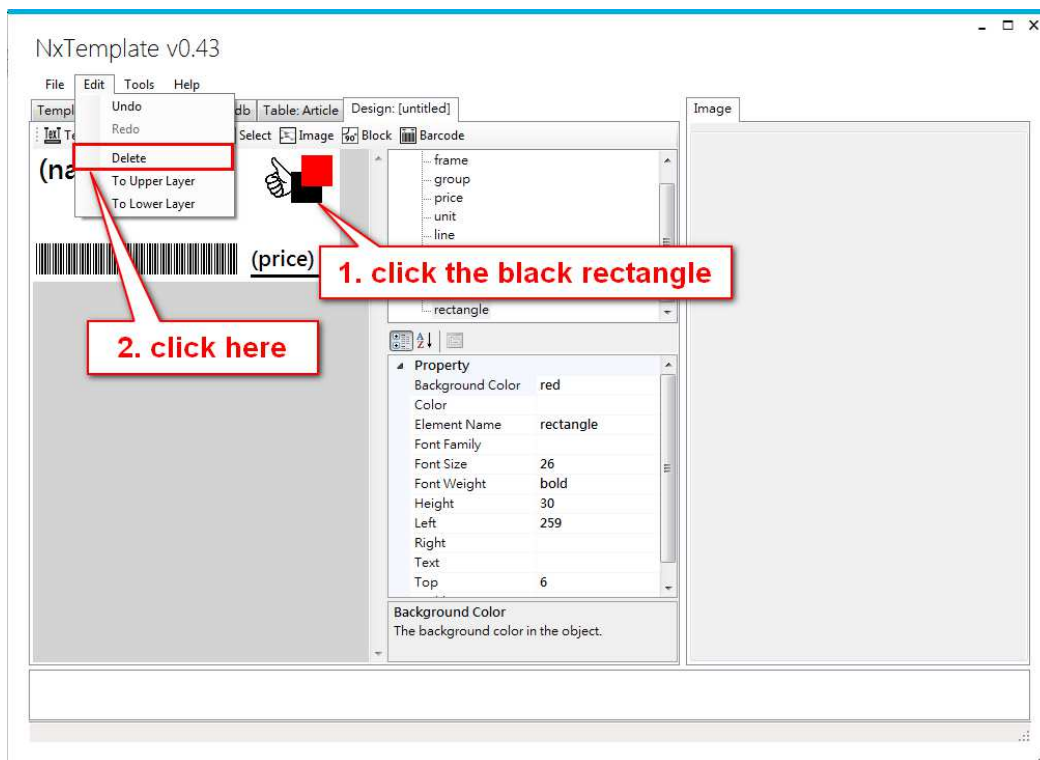


The black block is under the red block.

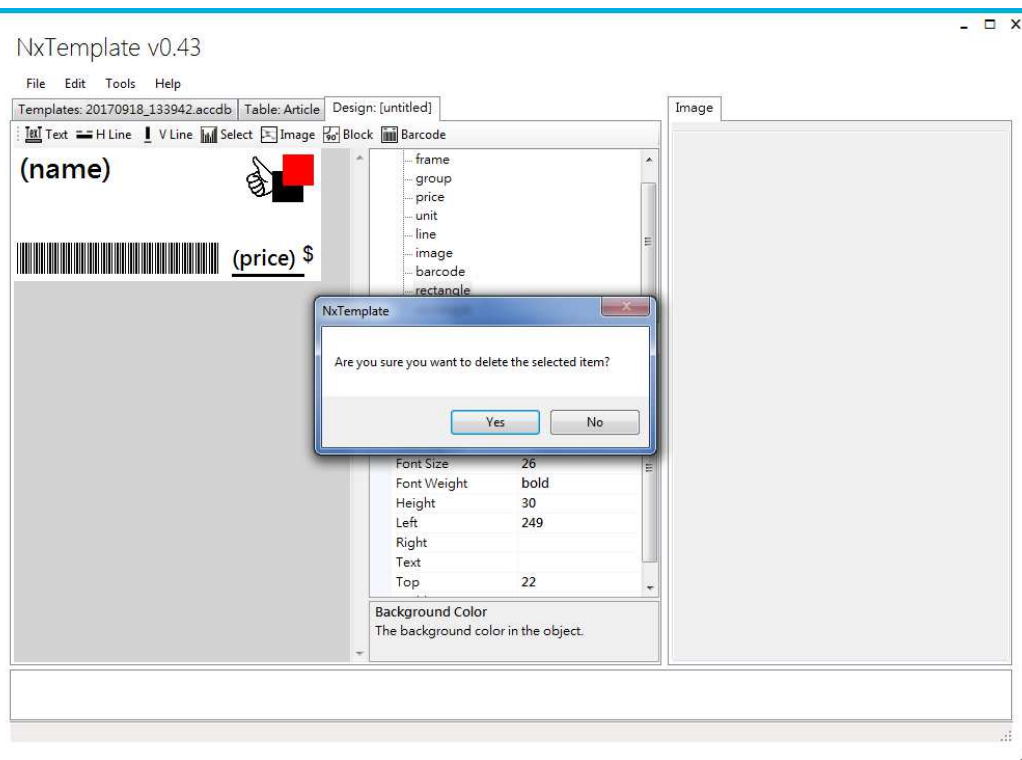


【Delete layer】

Click the image you want to delete. In sample that will delete black block. First of all, click black block. Second, click edit then click delete. (Edit > Delete)



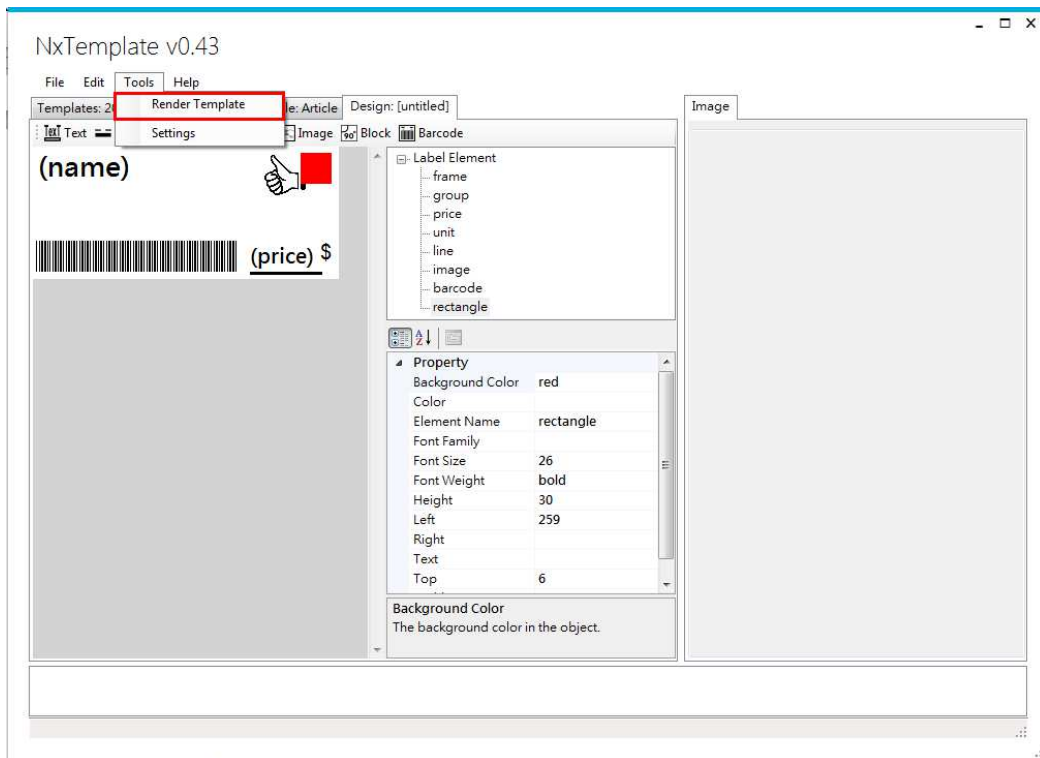
Click “yes”. The black block is disappearing.



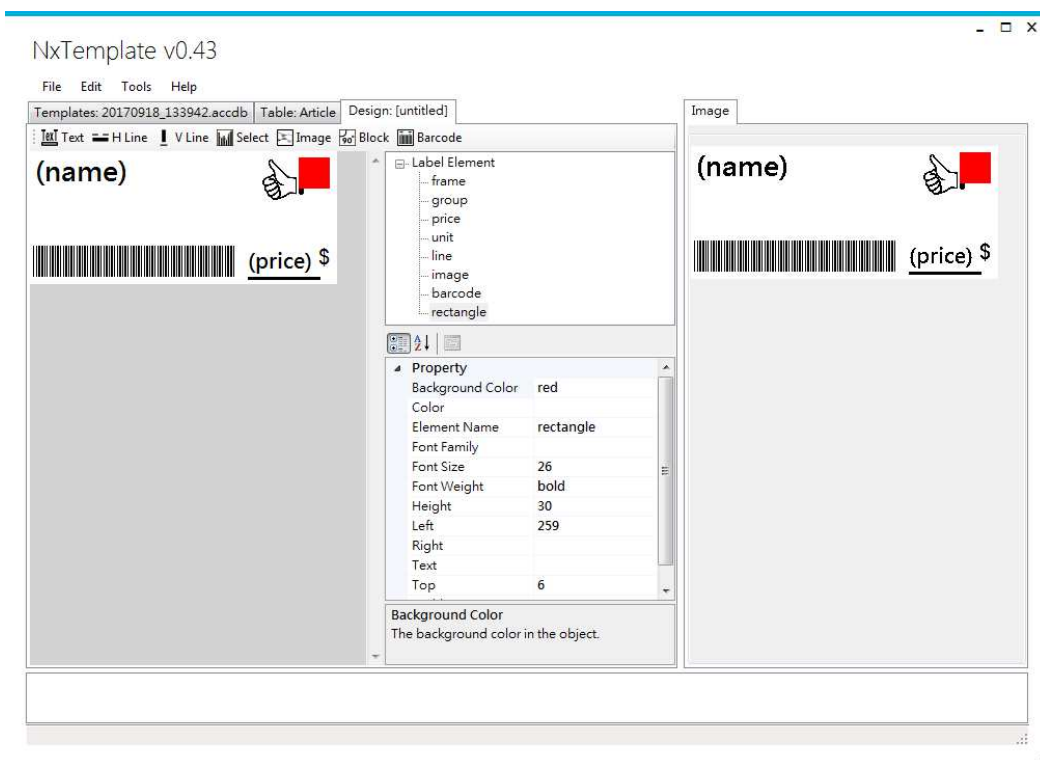
【Preview / Save image】

When you done your template. You should use “render template” to preview the template. Because of ESL is EPD panel. You have to check how the template is in real ESL.

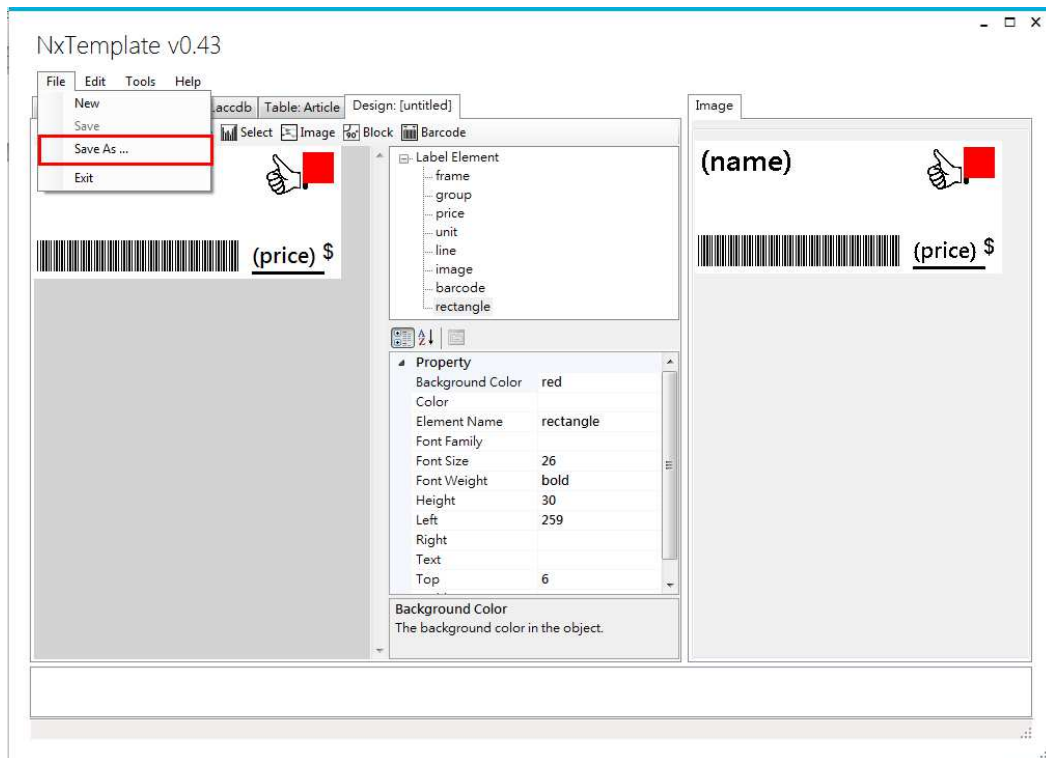
Tool > Render Template



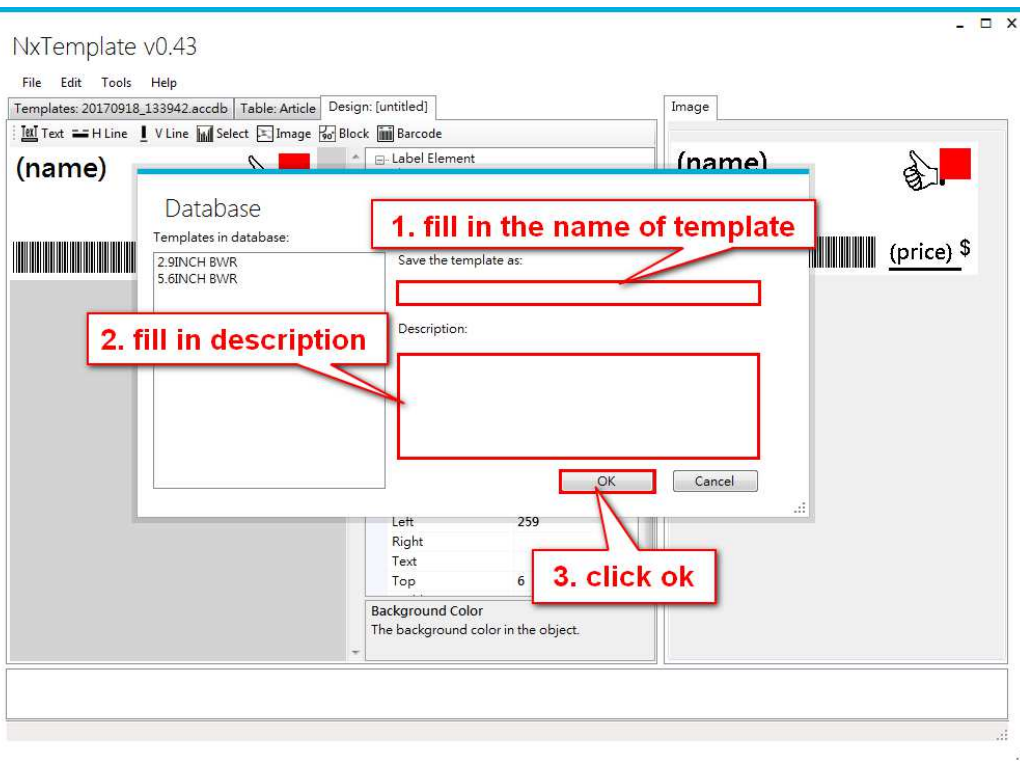
The preview template will show in image area.



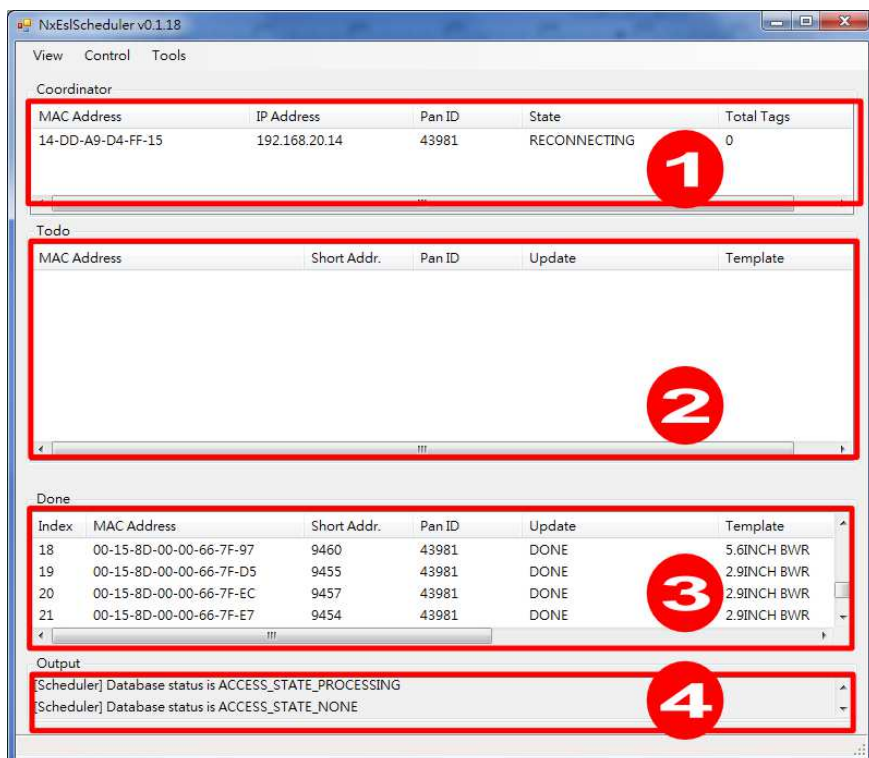
If you make sure the template is you want then you could save it. (File > Save as)
If you want to modify the template, you could directly modify it. After modify, you have to use “render template” again to preview the template.



After you click “save as”, you have to write some of description and template name in popup-window. After you are fill in information than click “ok”.



3.4.4 Scheduler interface



Scheduler has four areas. They are display different task. Show is below :

- Coordinator : When you launch the NxScheduler.exe, the MAC address will auto bring in and display in coordinator area.
- Todo : Display each ESL status of transfer. There are respectively pending, transferring, transferred, wakeup, updating.
- Done : Display already done ESL.
- Output : Display whether read information from program of composer and display the process of execution. If there are show “status job in database” that is mean the database already read by NxScheduler.exe.

4 Q&A

Q : If the ESL panel is broken or the image is incomplete, how can I do?

A : First of all you have to check the template and ESL size are match or not? If there are not match. Please re-select a template to fit with the ESL size. If there both are match. Please to launch program of composer again. Second, you can check the program of NxEsIscheduler.exe is working or not? Please contact us as soon as possible.

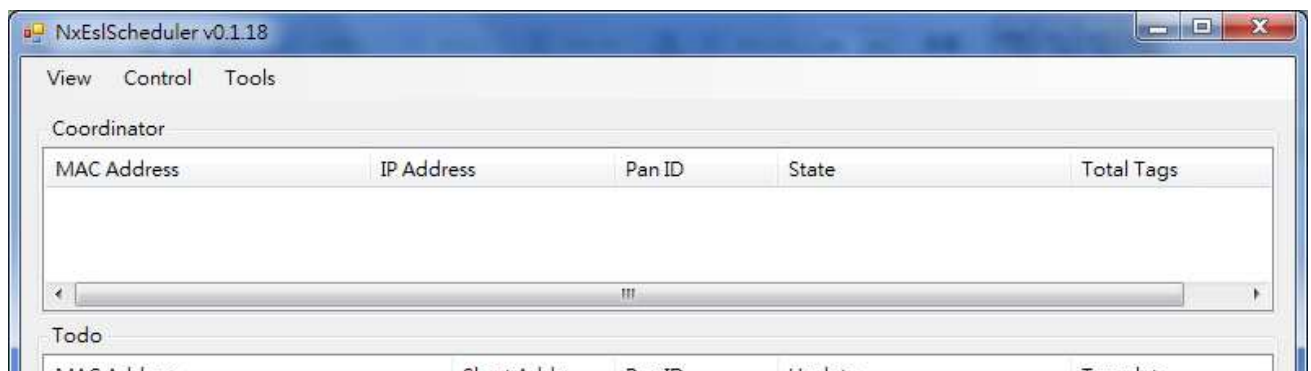
Q : How can I do when LED of coordinator is light off?

A : Please to check which LED is light off. If the LAN-link indicator is light off, you should try again to plug the network line or change new network line. If the LAN-ACT indicator is light out, you should check your router is working or not first. Because of the indicator is present work or not work between router and coordinator. If the power indicator is light out, you should change the adapter.

Q : How to calculate distance between coordinator and ESL?

A : Make sure coordinator is not in office but in store. It is out in the open (even if it is ugly) and in the center of the store if possible, free from obstructions. Don't hide it on the floor or behind pillar. Take coordinator as the center radius of 25 meters.

Q : How can I do when MAC address does not show up in the coordinator block during launch Nxscheduler.exe?



A : If MAC address does not show up normally, insert a paper clip or a SIM-eject tool to the reset hole of coordinator, press and hold the reset button for 2 seconds to reset the coordinator.

Q : How can I do when barcode scanner is not working normally?

A : Please to check power of barcode scanner is enough or not, first? Second, whether computer is connect with barcode scanner? Then to check program of composer and barcode

scanner was connected or not.

Q : How to print good barcode?

A : Edit > Article > select goods to printing > left-click > Export Article BCR Image

Q : How to print label barcode?

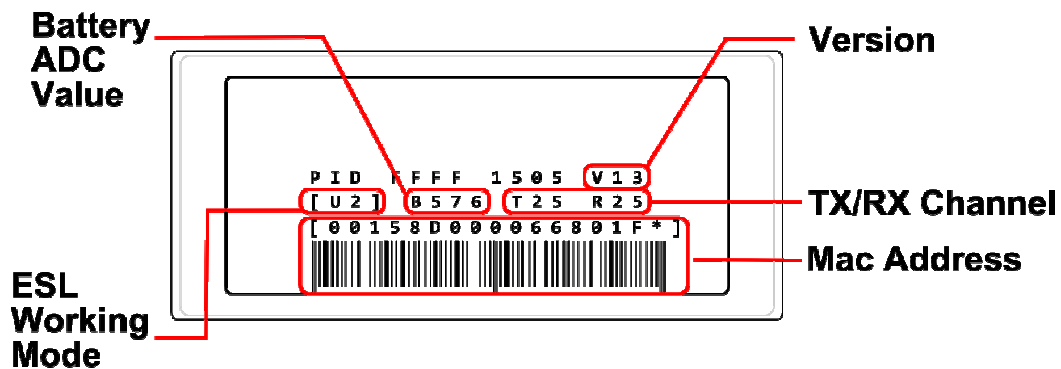
A : Edit > Labels > select labels to printing > left-click > Export Labels BCR Image

Q : How to print template barcode?

A : Edit > Labels > select template to printing > left-click > Export Labels BCR Image (Template)

Q : how to make sure battery of ESL ?

A : Please reset ESL. The power will show up in the ESL content. Battery value is in figure below.



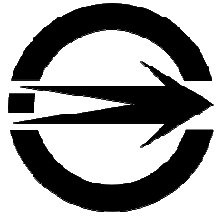
5 Appendix

5.1 Notice for cleaning and Safety

- Clean
 - Screen – Please use lint free cloth to wipe ESL. Don't use water, chemical solvents and spray.
 - Cover case – Use lint free cloth to wipe cover case.
- Safety tips
 - Please do not change battery of ESL by yourself.
 - Avoid dangerous, do not open cover case by yourself.
 - Do not insert your fingers or any other object into the gap of case.
 - Do not use wet rag to wipe the ESL in case of the spray or water leaks into the ESL. If you accidentally leak water into the ESL, you must connect with us and don't attempt to repair the ESL or turn power on by yourself.
 - Please obey user manual rule when operating ESL. If the temperature is out of ESL limit of temperature, please do not use it.
 - Avoid shaking or dropping the ESL and coordinator.
 - Avoid contact with sand or dust.
 - When ESL or coordinator are using, do not near the area of strong magnetic field.
- Instructional safeguard
 - Warning
Do not ingest battery, Chemical Burn Hazard.
 - This product contains a coin / button cell battery. If the coin / button cell battery is swallowed, it can cause severe internal burns in just 2 hours and can lead to death.
 - Keep new and used batteries away from children.
 - If the battery compartment does not close securely, stop using the product and keep it away from children.
 - If you think batteries might have been swallowed or placed inside any part of the body, seek immediate medical attention.

5.2 Certification mark

➤ BSMI-D43021



D43021

Coordinator

➤ CE



Coordinator

2.9" ESL P29205

2.9" ESL P29215

➤ FCC



Coordinator

2.9" ESL P29205

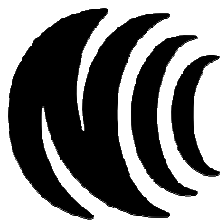
2.9" ESL P29215

FCC ID : NOIEL-P00105

FCC ID : NOIEL-P29215

FCC ID : NOIEL-P29215

➤ NCC



Coordinator

2.9" ESL P29205

2.9" ESL P29215

 **CCAI17LP1810T0**

 **CCAI17LP1800T0**

 **CCAI17LP1790T7**

Federal Communication Commission Interference

Statement

This device complies with Part 15 of the FCC Rules. Operation is subject to the following two conditions: (1) This device may not cause harmful interference, and (2) this device must accept any interference received, including interference that may cause undesired operation.

This equipment has been tested and found to comply with the limits for a Class B digital device, pursuant to Part 15 of the FCC Rules. These limits are designed to provide reasonable protection against harmful interference in a residential installation. This equipment generates, uses and can radiate radio frequency energy and, if not installed and used in accordance with the instructions, may cause harmful interference to radio communications. However, there is no guarantee that interference will not occur in a particular installation. If this equipment does cause harmful interference to radio or television reception, which can be determined by turning the equipment off and on, the user is encouraged to try to correct the interference by one of the following measures:

- Reorient or relocate the receiving antenna.
- Increase the separation between the equipment and receiver.
- Connect the equipment into an outlet on a circuit different from that to which the receiver is connected.
- Consult the dealer or an experienced radio/TV technician for help.

FCC Caution: Any changes or modifications not expressly approved by the party responsible for compliance could void the user's authority to operate this equipment.

This transmitter must not be co-located or operating in conjunction with any other antenna or transmitter.

Radiation Exposure Statement:

This equipment complies with FCC radiation exposure limits set forth for an uncontrolled environment. This equipment should be installed and operated with minimum distance 20cm between the radiator & your body.