

Kobo eReader User Guide

January 2015
Kobo Inc.

For Internal Use Only

Safety, Regulatory and Warranty Information

Important safety, regulatory and warranty details about your Kobo eReader can be found on the Kobo website at www.kobo.com/userguides.

Note: The Declaration of Conformity may vary for different models of the Kobo eReader. The web site includes details of how to find your Kobo eReader model number.

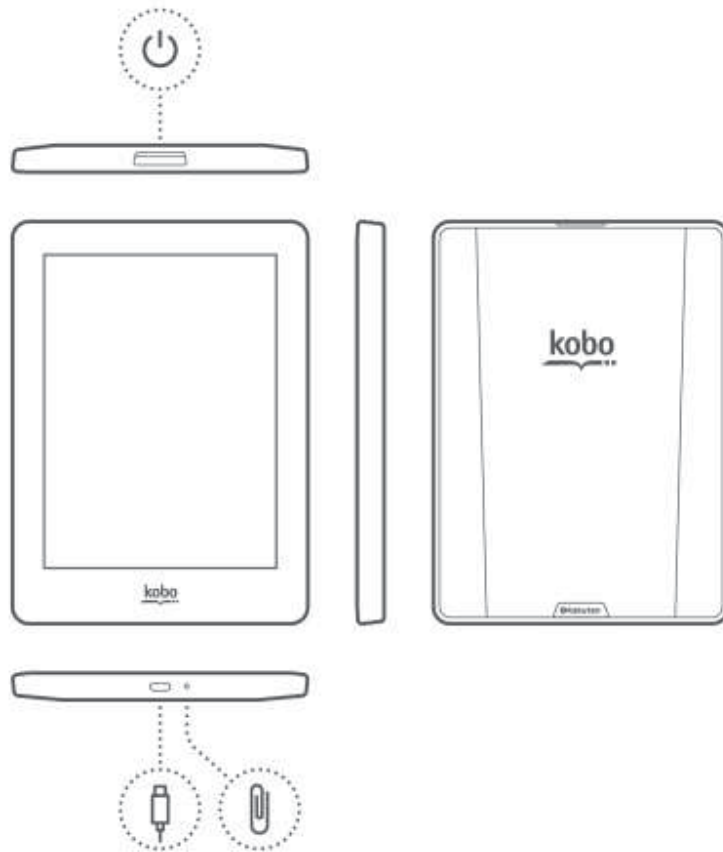
What's covered


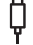

- Anatomy of your Kobo eReader
- Turning your Kobo eReader on and off
- Charging your Kobo eReader
- Turning pages
- Connecting to the Kobo Store or syncing your Library over Wi Fi
- Adding books using your computer

Note:

- This device does not have 3G capabilities, and only supports wireless LAN networks (WLAN).

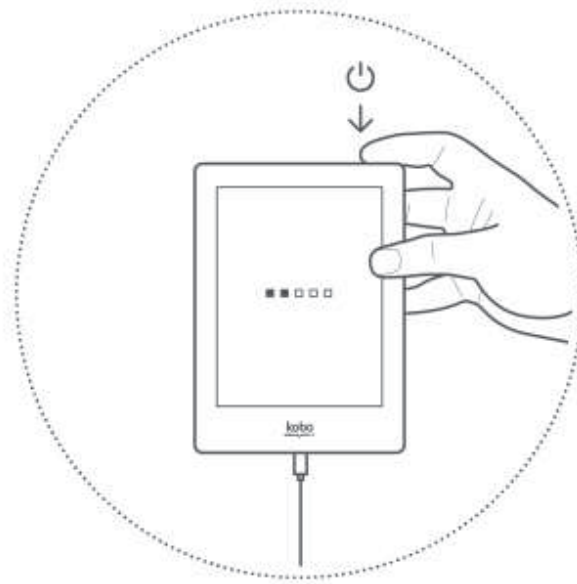
Anatomy of your Kobo eReader



	Power slider	Turn your eReader on and off, or put it to sleep.
	USB port	Connect your eReader to your computer using the supplied USB cable to charge your eReader or to add books to it.
	Reset hole	Insert a paper clip and press gently to reset your eReader.

Turning your Kobo eReader on & off

You can turn your eReader on and off or put it to sleep using the power button.



To turn on your eReader:

- Press the power button.

To turn off your eReader:

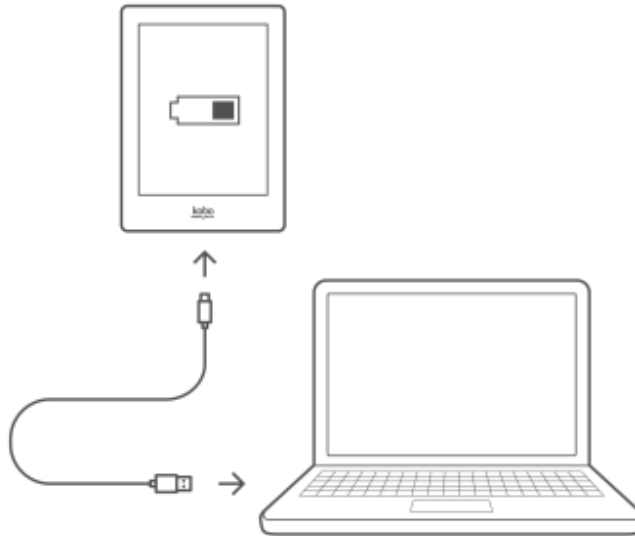
- Press and hold the power button until the Off screen appears.

To put your eReader to sleep:

- Press the power button briefly when your eReader is on.

Charging your Kobo eReader

Your eReader can last several weeks after a full charge. If this is your first time using your eReader out of the box, it's recommended to charge your eReader for up to 3 hours before using it.



To charge your eReader:

1. Turn on your computer.
2. Connect your eReader to your computer using the USB cable.

When you're finished charging, simply unplug the USB cable from your eReader.

Turning pages

You can turn pages while you read by tapping or swiping the touch screen.

To turn pages in a book:

- Tap or swipe the sides of the page.

If you want to jump forward by more than a page or two, you can:

- Use the navigation bar to change pages or chapters.
- Use the Table of Contents to browse a list of chapters and change chapters.

Connecting to the Kobo Store or syncing your Library over Wi Fi

Your eReader lets you use Wi Fi (wireless internet) so that you can shop for books, sync your library, and more. All you need is a wireless network in your area.

To connect to a wireless network:

1. Go to your Home screen.
2. Tap **Sync**.
Your eReader will look for Wi Fi networks that are in range.
3. Tap the name of the Wi Fi network that you'd like to connect to.
4. If required, enter the Wi Fi password.
5. Tap **Join**.

After you've connected to a Wi Fi connection, you'll see a Wi Fi symbol at the top right corner of the screen. This means that you're connected to Wi Fi. This icon will disappear when your eReader is trying to conserve battery. When you connect to the Kobo Store or sync your books, your eReader will automatically connect to Wi Fi.

Adding books using your computer

You can connect your eReader to your computer and then drag and drop books to add them to your eReader library.

To do this you need:

- A Windows or Mac computer
- A USB cable provided with your eReader
- The books you want to add to your eReader in EPUB or PDF format

To add books using a Mac computer:

1. Connect your eReader to your computer using the provided USB cable.
2. Tap **Connect** on your eReader screen.
3. On your computer's desktop, double-click **KOBOeReader**.
4. Open a Finder window, and go to where you stored the EPUB or PDF files you want to transfer to your eReader.
5. Drag and drop the files into the eReader window.


To add books using a Windows computer:

1. Connect your eReader to your computer using the provided USB cable.
2. Tap **Connect** on your eReader screen.
3. When Windows prompts you for an action, select 'Open folder to view files.' A window should open, showing the contents of your eReader.
4. In another window, go to where you stored your eBooks you want to add to your eReader.
5. Drag and drop your eBooks into the eReader window.

Legal

Regulatory Compliance Statement

Regulatory and device approval markings can be viewed on the Kobo eReader by completing these instructions:

1. Slide the power button to the right to turn on your eReader.
2. From the Home screen, tap the  Menu icon at the top of the screen.
3. Tap **Settings**.
4. Tap **About Kobo eReader**.

SAR Limits

The exposure standard for wireless devices employs a unit of measurement known as the Specific Absorption Rate, or SAR. The SAR limit set by the FCC/IC is 1.6W/kg. The SAR limit recommended by The Council of the European Union is 2.0W/kg. This device's maximum SAR value is well below the FCC/IC and EU limits with specific measurements shown in the below table.

Device Model	FCC/IC 1g SAR Limit	Highest Value
N437	1. 1.6W/kg	2. 1.37W/kg

Important: Changes or modifications to this product not authorized by Kobo could void the EMC and wireless compliance and negate your authority to operate the product. This product has demonstrated EMC compliance under conditions that included the use of compliant peripheral devices and shielded cables between system components. It is important that you use compliant peripheral devices and shielded cables between system components to reduce the possibility of causing interference to radios, televisions, and other electronic devices.

FCC Compliance Statement

This device complies with Part 15 of the FCC Rules. Operation is subject to the following two conditions: (1) This device may not cause harmful interference, and (2) this device must accept any interference received, including interference that may cause undesired operation.

This equipment has been tested and found to comply with the limits for a Class B digital device, pursuant to part 15 of the FCC Rules. These limits are designed to provide reasonable protection against harmful interference in a residential installation. This equipment generates, uses and can radiate radio frequency energy and, if not installed and used in accordance with the instructions, may cause harmful interference to radio communications. However, there is no guarantee that interference will not occur in a

particular installation. If this equipment does cause harmful interference to radio or television reception, which can be determined by turning the equipment off and on, the user is encouraged to try to correct the interference by one or more of the following measures:

- Reorient or relocate the receiving antenna.
- Increase the separation between the equipment and receiver.
- Connect the equipment into an outlet on a circuit different from that to which the receiver is connected.
- Consult the dealer or an experienced radio/TV technician for help.

Any changes or modifications not expressly approved by the party responsible for compliance could void the user's authority to operate this equipment. This device is limited to operation on permissible Part 15 frequencies, and is does not have the ability to be configured by end users or professional installers to operate outside the authorized bands.

Industry Canada statement

This device complies with RSS-210 of the Industry Canada Rules. Operation is subject to the following two conditions: (1) This device may not cause harmful interference, and (2) this device must accept any interference received, including interference that may cause undesired operation.

This Class B digital apartus complies with Canadian ICES-003

Ce dispositif est conforme à la norme CNR-210 d'Industrie Canada applicable aux appareils radio exempts de licence. Son fonctionnement est sujet aux deux conditions suivantes: (1) le dispositif ne doit pas produire de brouillage préjudiciable, et (2) ce dispositif doit accepter tout brouillage reçu, y compris un brouillage susceptible de provoquer un fonctionnement indésirable.

Cet appareil numérique de la classe B est conforme à la norme NMB-003 du Canada

FOR PORTABLE DEVICE USAGE

Radiation Exposure Statement:

The product complies with portable RF exposure limit in Canada and the USA set forth for an uncontrolled environment and is safe for intended operation as described in this manual. Further RF exposure reduction can be achieved if the product can be kept as far as possible from the user body.

Déclaration d'exposition aux radiations:

Le produit est conforme aux limites d'exposition pour les appareils portables RF pour les Etats-Unis et le Canada établies pour un environnement non contrôlé.

Le produit est sûr pour un fonctionnement tel que décrit dans ce manuel. La réduction aux expositions RF peut être augmentée si l'appareil peut être conservé aussi loin que possible du corps de l'utilisateur ou que le dispositif est réglé sur la puissance de sortie la plus faible si une telle fonction est disponible.