

User's Guide

**IEEE 802.11n Wireless Mini PCI
Adapter**

Model name: W413

FCC Certifications



Federal Communication Commission Interference Statement

This equipment has been tested and found to comply with the limits for a Class B digital device, pursuant to Part 15 of the FCC Rules. These limits are designed to provide reasonable protection against harmful interference in a residential installation. This equipment generates, uses and can radiate radio frequency energy and, if not installed and used in accordance with the instructions, may cause harmful interference to radio communications. However, there is no guarantee that interference will not occur in a particular installation. If this equipment does cause harmful interference to radio or television reception, which can be determined by turning the equipment off and on, the user is encouraged to try to correct the interference by one of the following measures:

- Reorient or relocate the receiving antenna.
- Increase the separation between the equipment and receiver.
- Connect the equipment into an outlet on a circuit different from that to which the receiver is connected.
- Consult the dealer or an experienced radio/TV technician for help.

This device complies with Part 15 of the FCC Rules. Operation is subject to the following two conditions: (1) This device may not cause harmful interference, and (2) this device must accept any interference received, including interference that may cause undesired operation.

FCC Caution: Any changes or modifications not expressly approved by the party responsible for compliance could void the user's authority to operate this equipment.

IMPORTANT NOTE:

FCC Radiation Exposure Statement:

This equipment complies with FCC radiation exposure limits set forth for an uncontrolled environment. This equipment should be installed and operated with minimum distance 20cm between the radiator & your body. This transmitter must not be co-located or operating in conjunction with any other antenna or transmitter.

IEEE 802.11b/g or 802.11n operation of this product in the U.S.A. is firmware-limited to channels 1 through 11.

This device is intended only for OEM integrators under the following conditions:

- 1) The antenna must be installed such that 20 cm is maintained between the antenna and users, and
- 2) The transmitter module may not be co-located with any other transmitter or antenna,
- 3) For all products market in US, OEM has to limit the operation channels in CH1 to CH11 for 2.4G band by supplied firmware programming tool. OEM shall not supply any tool or info to the end-user regarding to Regulatory Domain change.

As long as 3 conditions above are met, further transmitter test will not be required. However, the OEM integrator is still responsible for testing their end-product for any additional compliance requirements required with this module installed (for example, digital device emissions, PC peripheral requirements, etc.).

IMPORTANT NOTE: In the event that these conditions can not be met (for example certain laptop configurations or co-location with another transmitter), then the FCC authorization is no longer considered valid and the FCC ID can not be used on the final product. In these circumstances, the OEM integrator will be responsible for re-evaluating the end product (including the transmitter) and obtaining a separate FCC authorization.

End Product Labeling

This transmitter module is authorized only for use in device where the antenna may be installed such that 20 cm may be maintained between the antenna and users. The final end product must be labeled in a visible area with the following: "Contains FCC ID: NOI-W413".

Manual Information To the End User

The OEM integrator has to be aware not to provide information to the end user regarding how to install or remove this RF module in the user's manual of the end product which integrates this module.

The end user manual shall include all required regulatory information/warning as show in this manual.

DGT 警語：

經型式認證合格之低功率射頻電機，非經許可，公司、商號或使用者均不得擅自變更頻率、加大功率或變更原設計之特性及功能。

低功率射頻電機之使用不得影響飛航安全及干擾合法通信；經發現有干擾現象時，應立即停用，並改善至無干擾時方得繼續使用。前項合法通信，指依電信法規定作業之無線電通信。低功率射頻電機須忍受合法通信或工業、科學及醫療用電波輻射性電機設備之干擾。

本模組於取得認證後將依規定於模組本體標示審合格籤，並要求平台上標示「本產品內含射頻模組：ID 編號」

Unpacking Information

Before getting started, please verify that your package includes the following items:

1. IEEE 802.11n Wireless mini PCI
2. Three detachable antennae
3. One Quick Installation Guide
4. One Utility/ Manual CD

Installation Guide

Note: The following driver installation guide uses Windows XP as the presumed operation system.


For Linux and Mac driver installation guide, please refer to the instruction in **/Driver/Linux** and **/Driver/Mac** in the CD-Rom. The procedures and screens in Windows 2000 and Vista are familiar with Windows XP.

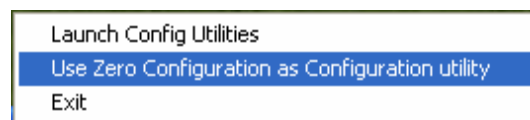
1. Insert this product to your computer. The system finds the newly installed device automatically. Click **Cancel** to close this window.
2. Insert the CD-Rom that came with this product to your CD-Rom drive. The menu window pops up automatically. Please click the Driver button of this product.

Note: If the CD-Rom fails to auto-run, please click on **My Computer**> **your CD-Rom drive**> **(folder of this product)**> **Driver** then double-click the Setup icon to start this menu.


3. Select if you are going to configure your wireless network with this device or with Microsoft Zero Configuration tool. (**Note:** This can be changed after installing this software.)
4. Select to optimize this adapter in WiFi mode or performance mode. **Note:** The performance mode is only available while connecting to a TX Burst supported AP. Users that uses the AP without TX Burst please select WiFi mode (standard mode).
5. Click the **Install** button to start installing.
6. Click the **Finish** button to complete installation.

Connect this adapter to your AP quickly

You could use either the software we provide or Microsoft Zero Configuration tool, please right click on the  icon on system tray to select.

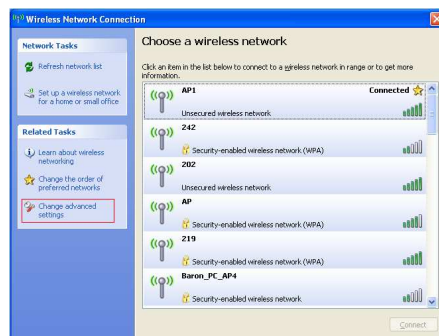


To connect with Microsoft Zero Configuration tool


1. Right click on the  icon on system tray.
2. Select **View Available Wireless Networks** to specify your wireless network.

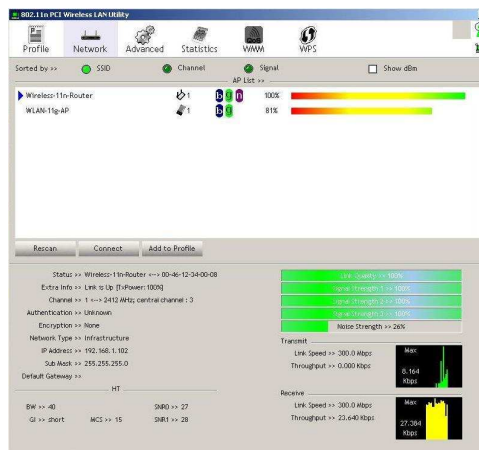


3. The tool shows the available wireless networks. Select your demanding network to connect with. To connect to a wireless network with more security settings, please click **Change advanced settings** to be compatible with your wireless network security settings.



To connect with 802.11n Wireless LAN utility

As default, the Utility is started automatically upon starting your computer and connects to a connectable wireless network with best signal strength. Right click on the  icon and select **Launch Config utilities** if the Utility does not start.



You can change the connecting network by clicking on the network name and click the **Connect** button.

Select an available network and click **Add to Profile** to configure the encryption settings if you wish to connect to an AP with security protection.