



Elliott Tech, LLC

IREP Assembly Manual

IREP

New Centurion Solutions



Project Number: 776

Reference: 776-91-03-REV-.docx

Original Document: March 1, 2011

Revision A: March 16, 2011



Prepared for:
New Centurion Solutions, Inc.
Greg Williams
3011 Spring Garden St.
Suite E
Greensboro, NC 27403
(336) 617-5410
GWilliams@newcenturionsolutions.com

Prepared by:
Elliott Tech, LLC
346 Raleigh Street
Holly Springs, NC 27540
(919) 342-6899
(888) 631-1795 Fax
s.elliott@elliotttech.com

THE INFORMATION CONTAINED HEREIN IS PROPRIETARY TO NEW CENTURION SOLUTIONS, INC. AND SHALL NOT BE REPRODUCED OR DISCLOSED IN WHOLE OR IN PART FOR ANY DESIGN OR MANUFACTURE EXCEPT WHEN SUCH USER POSSESSES DIRECT, WRITTEN AUTHORIZATION FROM NEW CENTURION SOLUTIONS, INC.

Revision Page

Rev	Description	Section
A	FCC Notification	3

THE INFORMATION CONTAINED HEREIN IS PROPRIETARY TO NEW CENTURION SOLUTIONS, INC. AND SHALL NOT BE REPRODUCED OR DISCLOSED IN WHOLE OR IN PART FOR ANY DESIGN OR MANUFACTURE EXCEPT WHEN SUCH USER POSSESSES DIRECT, WRITTEN AUTHORIZATION FROM NEW CENTURION SOLUTIONS, INC.

Contents

1. Equipment List 4

2. Assembly Instructions 5

3. FCC Notification..... 7

1. EQUIPMENT LIST

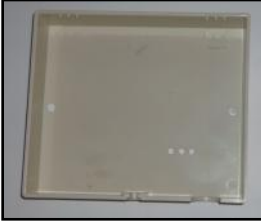
A. IREP Enclosure - Inside (1)



B. Tenergy Battery (1)



C. IREP Enclosure - Outside (1)



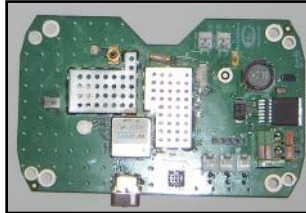
D. Double Sided Tape



E. IREP Enclosure - Screws (4)



F. IREP PCB (1)



G. Coaxial Cable RF Plug-SMA Jack (1)



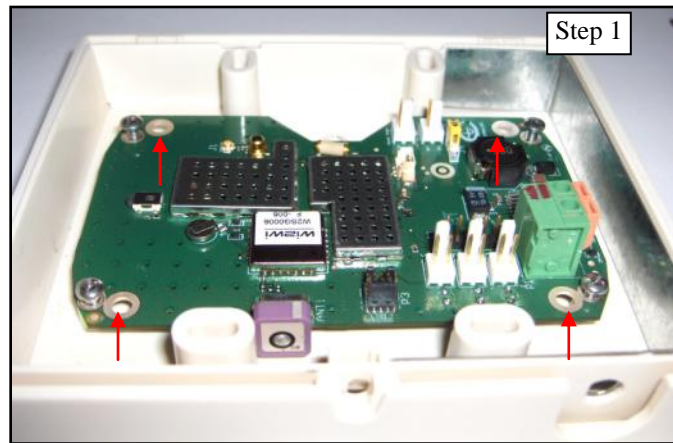
H. SMA Antenna (1)



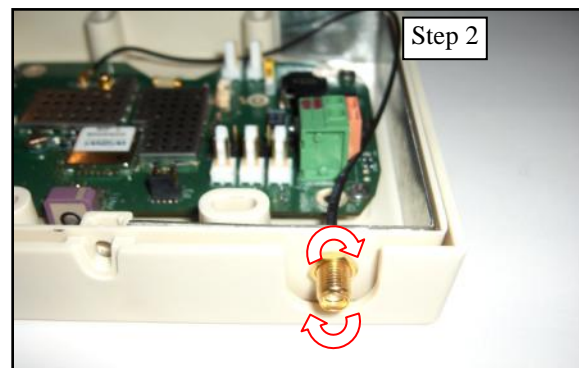
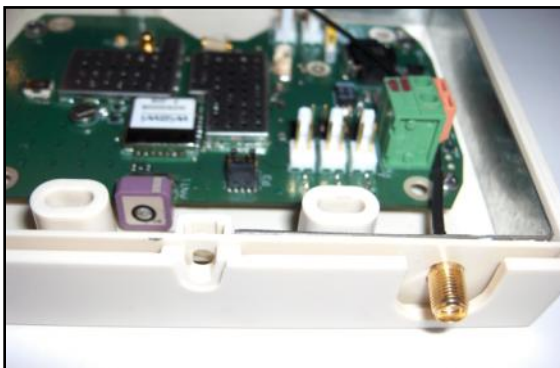
2. ASSEMBLY INSTRUCTIONS

To begin, check the parts available against the equipment list, identifying any missing parts. If all parts are accounted for, proceed to the instructions below to begin assembling the indoor repeater (IREP).

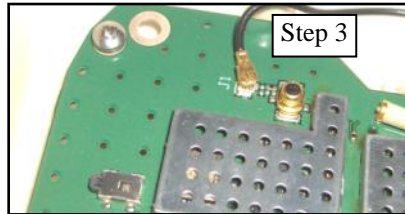
Step 1: The inside enclosure (A) should come inside of the outside enclosure (C) as indicated in the figure below. Place the PCB (F) over the inside enclosure so that the LED's line up with the three consecutive holes and that the holes in each corner of the PCB line up over the screw holes on the enclosure. Insert the enclosure screws (E) into each corner of the PCB attaching the board to the enclosure.



Step 2: Put the washer on the end of the RF cable (G) with the jack and feed it through the opening in the enclosure from the inside out. Rotate the nut clockwise around the outside of the RF jack until it is flush against the enclosure.



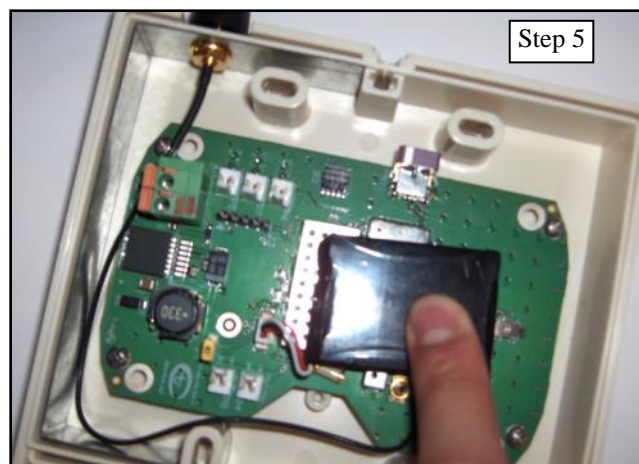
Step 3: Take the SMA plug end of the RF cable and attach it to the RF port labeled J1 on the PCB by laying the plug over the port and pressing down. The plug should snap right into place.



Step 4: Attach the SMA Antenna to the RF jack by screwing it in clockwise to the outside of the enclosure.



Step 5: Insert the Tenergy battery (B) connector into the 3 pin header on the PCB beside the "on" switch. After doing so, apply a piece of double sided tape (D) to either side of the battery, and press the battery against the metal shields on the PCB.



3. FCC NOTIFICATION

NOTE: THE MANUFACTURER IS NOT RESPONSIBLE FOR ANY RADIO OR TV INTERFERENCE CAUSED BY UNAUTHORIZED MODIFICATIONS TO THIS EQUIPMENT. SUCH MODIFICATIONS COULD VOID THE USER'S AUTHORITY TO OPERATE THE EQUIPMENT.

THIS DEVICE COMPLIES WITH PART 15 OF THE FCC RULES. OPERATION IS SUBJECT TO THE FOLLOWING TWO CONDITIONS: (1) THIS DEVICE MAY NOT CAUSE HARMFUL INTERFERENCE, AND (2) THIS DEVICE MUST ACCEPT ANY INTERFERENCE RECEIVED, INCLUDING INTERFERENCE THAT MAY CAUSE UNDESIRE OPERATION.