



Elliott Tech, LLC

OREP Installation Manual

OREP

New Centurion Solutions



Project Number: 776

Reference: 776-91-07-REV-OREP_INSTALLATION_MANUAL.docx

Original Document: March 1, 2011

Revision A: March 16, 2011



Prepared for:
New Centurion Solutions, Inc.
Greg Williams
3011 Spring Garden St.
Suite E
Greensboro, NC 27403
(336) 617-5410
GWilliams@newcenturionsolutions.com

Prepared by:
Elliott Tech, LLC
346 Raleigh Street
Holly Springs, NC 27540
(919) 342-6899
(888) 631-1795 Fax
s.elliott@elliotttech.com

THE INFORMATION CONTAINED HEREIN IS PROPRIETARY TO NEW CENTURION SOLUTIONS, INC. AND SHALL NOT BE REPRODUCED OR DISCLOSED IN WHOLE OR IN PART FOR ANY DESIGN OR MANUFACTURE EXCEPT WHEN SUCH USER POSSESSES DIRECT, WRITTEN AUTHORIZATION FROM NEW CENTURION SOLUTIONS, INC.

Revision Page

| Rev | Description | Section |
|-----|------------------|---------|
| A | FCC Notification | 3 |
| | | |

Contents

1. *Equipment List* 4

2. *Installation Instructions* 6

3. *FCC Notification*..... 11

1. EQUIPMENT LIST

- A. OREP assembly (1)



- C. Solar Bracket & Hardware (1)



- E. Solar Panel (1)



- G. TN-Male to N-Male Pigtail 2 ft (2)



- I. Mounting Base-Treated Plywood (1)



- K. Hardware to attach tripod to base (3)



- M. Antenna 3db (1)



- B. Hardware to attach to OREP Bracket (4)



- D. Bracket Hardware (2)



- F. Panel Hardware (2)



- H. Lightning Surge Protector (1)



- J. Tripod Base (1)



- L. Mast (1)



- N. Antenna Bracket (1)



- O. U-Bolt and mast attachment hardware (1)



- P. OREP Bracket (1)



- Q. U-Bolts, nuts, washers (2 sets)



- R. TN-Male to N-Male Pigtail 2 ft (2)



- S. Battery Box (1)



- T. 12V Battery (1)



- U. Battery Restraining Strap (2)



2. INSTALLATION INSTRUCTIONS

To begin, check the parts available against the equipment list, identifying any missing parts. If all parts are accounted for, proceed to the instructions below to begin installing the OREP.



Step 1: Identify the *Mounting Base-Treated Plywood (I)*. Place the plywood on the ground laying flat. Identify the *Tripod Base (J)*, open its legs until fully extended, and center it on the plywood. Mark the points for the drill holes with a pencil and set the base. Drill 1/8" holes where they marked on the plywood. Identify the *Hardware to attach to OREP Bracket*



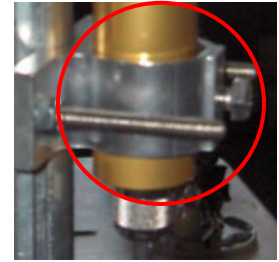
aside are (B). of the screws and nut screw.

Push the screws up through the drilled holes from the bottom plywood, and align the tripod base with the screws. Push the through the holes in the tripod base and secure with a washer (from *Hardware to attach to OREP Bracket (B)*) on each. Make sure hardware is secure before proceeding to the next step.

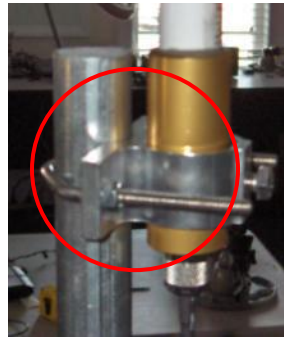


Step 2: Place *Mast (L)* down through the center of the *Tripod Base (J)*. Tighten screws at the top and center of the *Tripod Base (J)* to secure the *Mast (L)*.

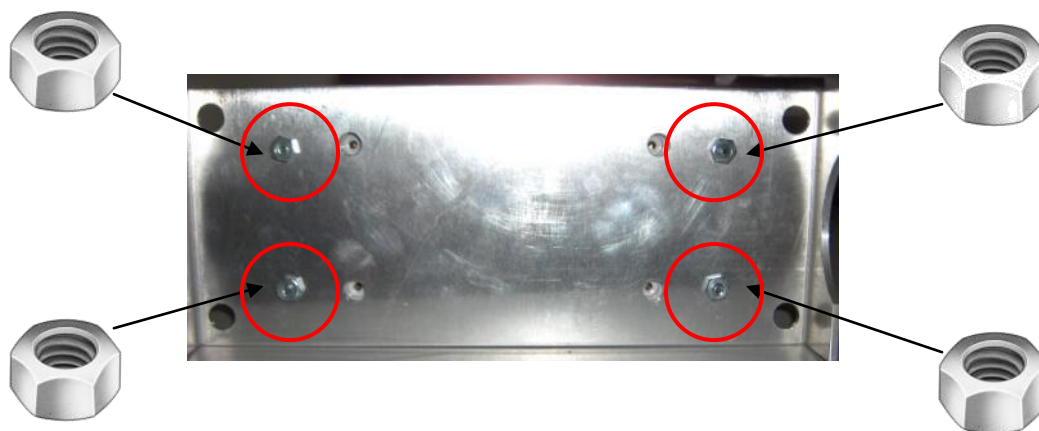
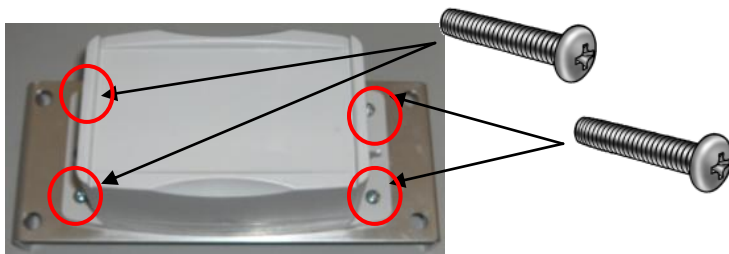
Step 3: Place *Antenna 3db* (M) through hole in *Antenna Bracket* (N) and secure at base of antenna.



Step 4: Identify the *U-Bolt and mast attachment hardware* (O). Secure the antenna-bracket assembly to the mast by sliding a u-bolt through each hole in the bracket (from previous step) and around the mast. Secure the u-bolt on the mast with two nuts (included with u-bolt).



Step 5: Place the *OREP assembly* (A) on the *OREP Bracket* (P) with the legs facing away. Identify the *Hardware to attach to OREP Bracket* (B). Insert four screws into the OREP enclosure holes and push through the holes in the bracket. Secure the OREP to the bracket by attaching four nuts to the screws on the backside of the bracket.



Step 6: Note the OREP bracket has two curved half-moon shaped areas on the back of it. These areas allow the bracket to seat flushly on the mast. Identify the *U-Bolts, nuts, washers* assembly on the mast, through the matching holes in the OREP bracket. Secure this u-bolt with two nuts and two washers. Repeat the process for the other u-bolt. Ensure both u-



to seat flushly on the mast. Identify the *U-(Q)*, and while holding the OREP-bracket place one u-bolt around the mast and feed holes in the OREP bracket. Secure this u-bolt with two nuts and two washers. Repeat the process for the other u-bolts are tightened snugly.

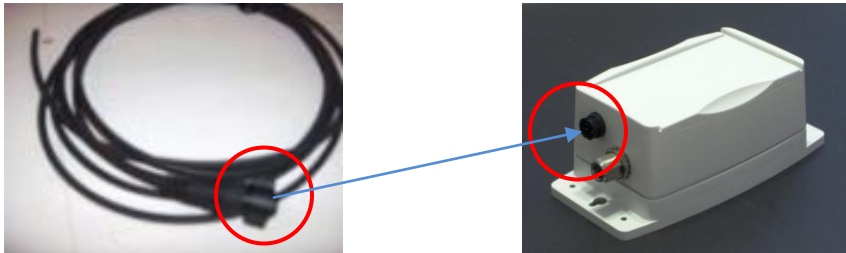
Step 7: Take TN-Male to N-Male Pigtail cable (U) and attach to OREP (A) and secure. Take open end and attach to Light Surge (H) and secure. Surge (H) and 2nd cable (U) and secure end Light Surge (U) and secure to bottom of



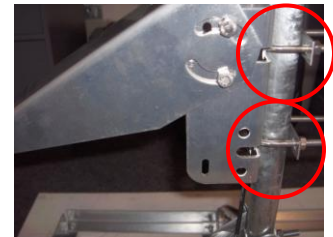
Take open end Light together. Take open antenna (M).



Step 8: Take Inmate 23 4#20 Female Panel Receptacle (G) and secure to OREP as shown.



Step 9: Next, place the **Solar Bracket** (C) approx. 8-10" below the **Repeater Bracket**. Make sure the bracket is securely attached with two U Bolts (D).



Step 10: Now attach the accompanying part of the **Solar Bracket** to the part already attached to the mast. Angle it at a 45 degree angle and secure tightly. Use the pictures above to confirm proper placement.

Step 11: Now attach the **Solar Panel** to the bracket. Confirm that the panel is angled properly and securely fastened. Use the pictures above for reference.





Step 12: Take open end Receptacle (G) and strip wire cover to show bare wire.



Attach bare wire to battery (T) White wire to positive side and black wire to negative side.



Step 13: Place assembled battery (T) inside battery box (S)

Step 14: Set under middle of tripod (J) on mounting base (I)



Complete OREP Assembly



3. FCC NOTIFICATION

NOTE: THE MANUFACTURER IS NOT RESPONSIBLE FOR ANY RADIO OR TV INTERFERENCE CAUSED BY UNAUTHORIZED MODIFICATIONS TO THIS EQUIPMENT. SUCH MODIFICATIONS COULD VOID THE USER'S AUTHORITY TO OPERATE THE EQUIPMENT.

THIS DEVICE COMPLIES WITH PART 15 OF THE FCC RULES. OPERATION IS SUBJECT TO THE FOLLOWING TWO CONDITIONS: (1) THIS DEVICE MAY NOT CAUSE HARMFUL INTERFERENCE, AND (2) THIS DEVICE MUST ACCEPT ANY INTERFERENCE RECEIVED, INCLUDING INTERFERENCE THAT MAY CAUSE UNDESIRE OPERATION.