



Elliott Tech, LLC

OREP Assembly Manual

OREP

New Centurion Solutions



Project Number: 776

Reference: 776-91-04-REV-.docx

Original Document: March 1, 2011

Revision A: March 16, 2011



Prepared for:
New Centurion Solutions, Inc.
Greg Williams
3011 Spring Garden St.
Suite E
Greensboro, NC 27403
(336) 617-5410
Gwilliams@newcenturionsolutions.com

Prepared by:
Elliott Tech, LLC
346 Raleigh Street
Holly Springs, NC 27540
(919) 342-6899
(888) 631-1795 Fax
s.elliott@elliotttech.com

THE INFORMATION CONTAINED HEREIN IS PROPRIETARY TO NEW CENTURION SOLUTIONS, INC. AND SHALL NOT BE REPRODUCED OR DISCLOSED IN WHOLE OR IN PART FOR ANY DESIGN OR MANUFACTURE EXCEPT WHEN SUCH USER POSSESSES DIRECT, WRITTEN AUTHORIZATION FROM NEW CENTURION SOLUTIONS, INC.

Revision Page

Rev	Description	Section
A	FCC Notification	3

THE INFORMATION CONTAINED HEREIN IS PROPRIETARY TO NEW CENTURION SOLUTIONS, INC. AND SHALL NOT BE REPRODUCED OR DISCLOSED IN WHOLE OR IN PART FOR ANY DESIGN OR MANUFACTURE EXCEPT WHEN SUCH USER POSSESSES DIRECT, WRITTEN AUTHORIZATION FROM NEW CENTURION SOLUTIONS, INC.

Contents

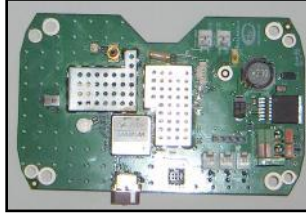
<i>1. Equipment List</i>	<i>4</i>
<i>2. Assembly Instruction</i>	<i>5</i>
<i>3. FCC Notification</i>	<i>8</i>

1. EQUIPMENT LIST

A. OREP Enclosure - Top (1)



B. OREP PCB (1)



C. OREP Enclosure - Bottom (1)



D. 1/4" Tapping Screws for PCB (4)



E. OREP Enclosure - Rubber Mat (1)



F. 8" Bulkhead to Pigtail RF Cable (1)



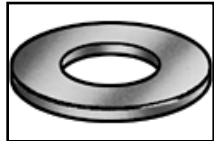
G. OREP Enclosure - Screws (4)



H. Inmate Male Panel Receptacle with Lead Wires (1)



I. OREP Spacer/Washer (4)



J. Tenenergy Battery (1)



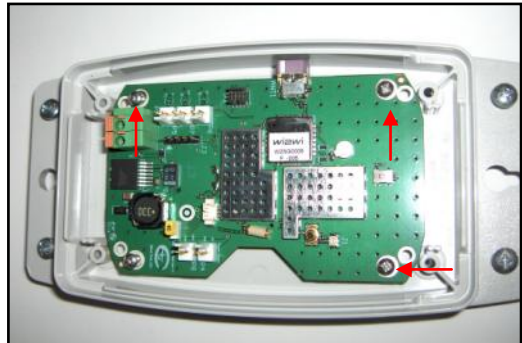
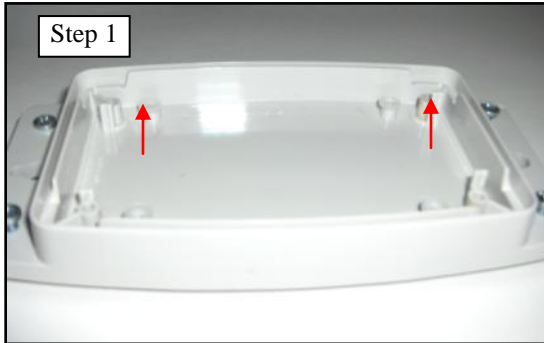
K. Double Sided Tape



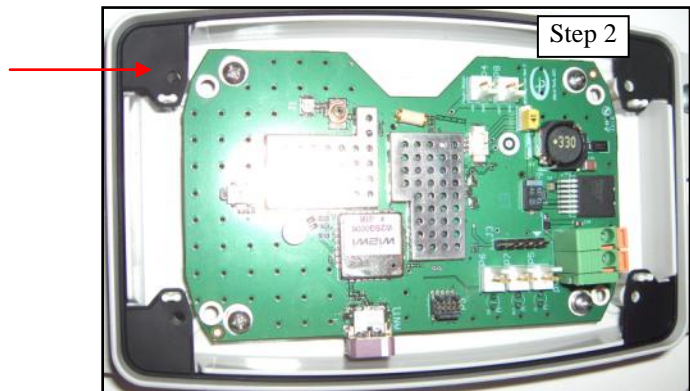
2. ASSEMBLY INSTRUCTION

To begin, check the parts available against the equipment list, identifying any missing parts. If all parts are accounted for, proceed to the instructions below to begin assembling the outdoor repeater (OREP).

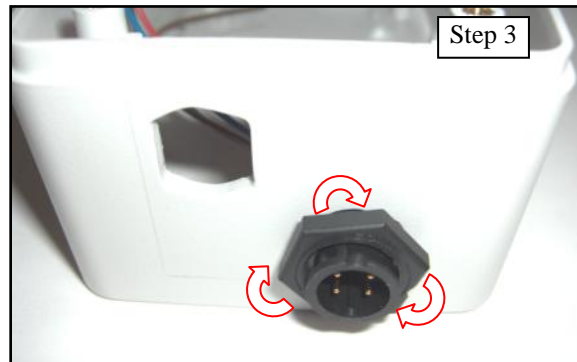
Step 1: Take the bottom enclosure (C) and place an OREP spacers/washers (I) over each of the inside screw holes as designated in the figure below. Lay the OREP PCB (B) over the bottom enclosure, making sure there is a spacer under each corner of the PCB. Insert a tapping screw (D) into each corner, mounting the PCB to the enclosure.



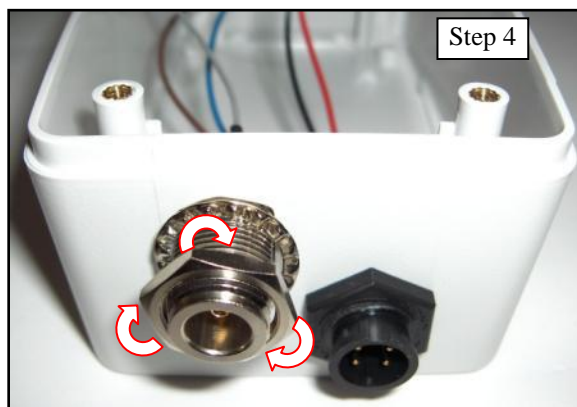
Step 2: Identify the rubber mat and line the holes up with the elevated screw holes in each corner. Feed the openings on the rubber mat through the double pegs beside each elevated screw hole.



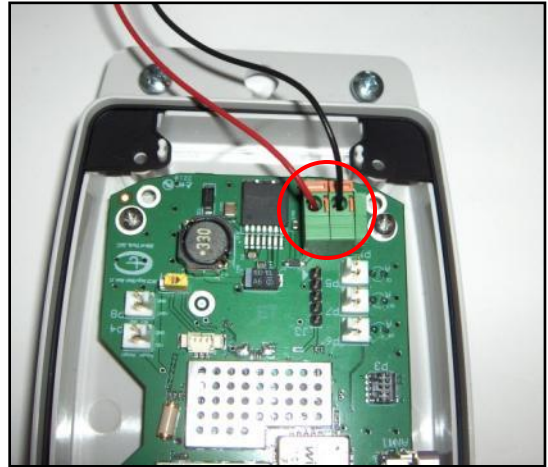
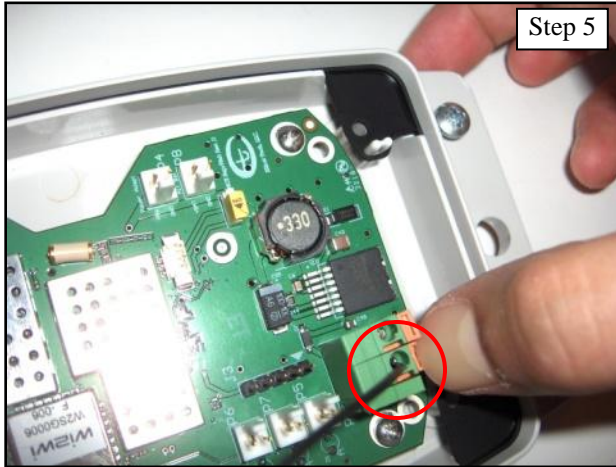
Step 3: Insert the panel receptacle (H) into the inside of the front enclosure with the pins facing out. Rotate the nut (with the text facing outwards) clockwise around the receptacle until it is flush against the bottom enclosure.



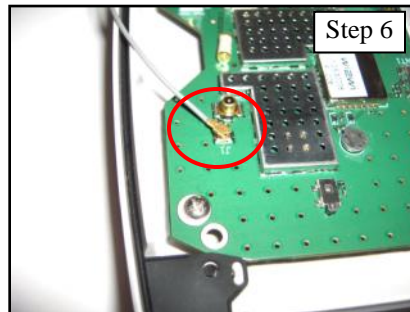
Step 4: Take the bulkhead RF cable (F) and remove the nut and washer. Insert the bulkhead into the inside of the front enclosure with the pin facing out. Fasten the washer to the bulkhead (outside of the enclosure) and rotate the nut clockwise until it is flush against the bottom enclosure.



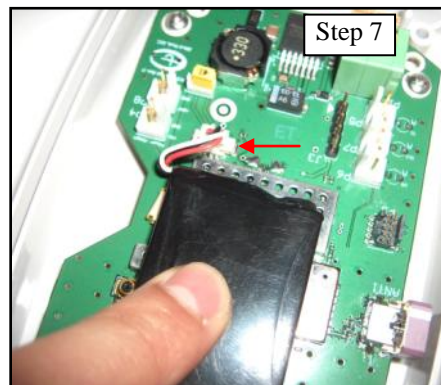
Step 5: Feed the wires from the panel receptacle into the terminal block labeled P1 on the PCB by pushing down on one orange tab and feeding the wire through the respective terminal. Looking down on the terminal block with the tabs on the right, the red wire should be inserted into the top terminal and the black wire should be inserted into the bottom as indicated in the figure below.



Step 6: Insert the pigtail connector end of the RF cable into the RF port labeled J1 on the PCB by laying connector over the port and pressing down on the connector. The connector should snap right into place.

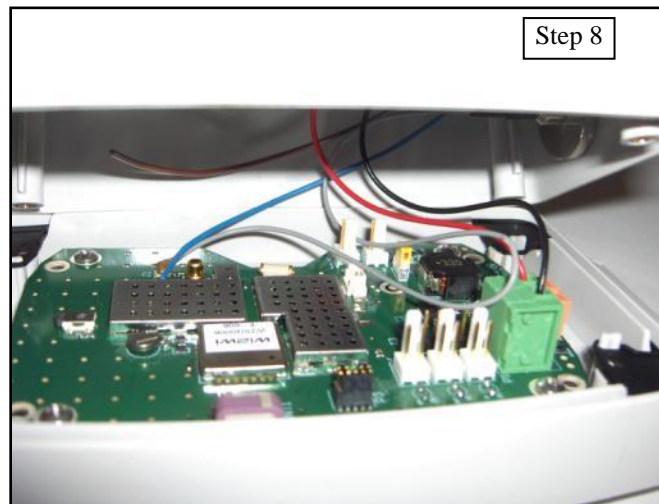


Step 7: Insert the Tenergy battery (J) connector into the 3 pin header on the PCB beside the "on" switch. After doing so, apply a piece of double sided tape (K) to either side of the battery, and press the battery against the metal shields on the PCB.

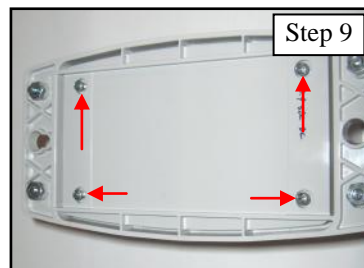


THE INFORMATION CONTAINED HEREIN IS PROPRIETARY TO NEW CENTURION SOLUTIONS, INC. AND SHALL NOT BE REPRODUCED OR DISCLOSED IN WHOLE OR IN PART FOR ANY DESIGN OR MANUFACTURE EXCEPT WHEN SUCH USER POSSESSES DIRECT, WRITTEN AUTHORIZATION FROM NEW CENTURION SOLUTIONS, INC.

Step 8: Lay one side of the top enclosure over the bottom enclosure, making sure that all of the wires/cables are tucked inside and that none are folded over as that may cause damage. Slowly close the enclosures together until the top enclosure is flush against the bottom. The edges should fit together neatly.



Step 9: Flip the enclosures over so that the bottom enclosure is on top. Insert the 4 enclosure screws (G) into the screw holes on the bottom enclosure. Screw clockwise to finish assembling the OREP.



3. FCC NOTIFICATION

NOTE: THE MANUFACTURER IS NOT RESPONSIBLE FOR ANY RADIO OR TV INTERFERENCE CAUSED BY UNAUTHORIZED MODIFICATIONS TO THIS EQUIPMENT. SUCH MODIFICATIONS COULD VOID THE USER'S AUTHORITY TO OPERATE THE EQUIPMENT.

THIS DEVICE COMPLIES WITH PART 15 OF THE FCC RULES. OPERATION IS SUBJECT TO THE FOLLOWING TWO CONDITIONS: (1) THIS DEVICE MAY NOT CAUSE HARMFUL INTERFERENCE, AND (2) THIS DEVICE MUST ACCEPT ANY INTERFERENCE RECEIVED, INCLUDING INTERFERENCE THAT MAY CAUSE UNDESIRE OPERATION.

THE INFORMATION CONTAINED HEREIN IS PROPRIETARY TO NEW CENTURION SOLUTIONS, INC. AND SHALL NOT BE REPRODUCED OR DISCLOSED IN WHOLE OR IN PART FOR ANY DESIGN OR MANUFACTURE EXCEPT WHEN SUCH USER POSSESSES DIRECT, WRITTEN AUTHORIZATION FROM NEW CENTURION SOLUTIONS, INC.