

Content

Get started	2
Insert SIM card	2
Insert Memory card	2
Charge the Battery or Connect to a computer	3
Keys and parts	4
Lock and Unlock the Screen	5
Make it yours	6
Add Widgets and more icons to Home Screen	7
Adding widgets and icons to home screen	7
Rearranging or removing widgets and icons on your Home screen	7
Enter Launcher	8
Open and Switch Applications	8
Switch to Recently Used Application	9
Make a call	10
Call log	11
Reject a Call by Sending a busy Message	12
Add a contact	13
Send and Receive Message(s)	14
Browse the Web	17
Enjoy Music	18
Download Applications From Android Market	19
Manage Applications/ Move to SD card	20
Maintenance & Safety	21

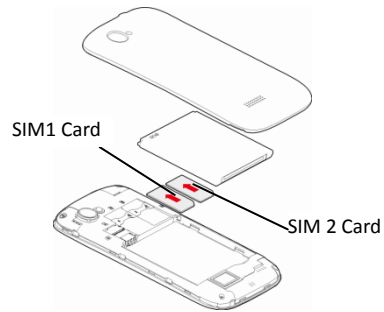
Get started

Insert SIM card

The phone is a Dual SIM mobile phone allowing you to use the facility of two networks.

To insert SIM card(s):

1. Switch off the mobile phone and remove the rear cover and battery.
2. Insert the SIM card correctly in the card slot(s) (See figure below)

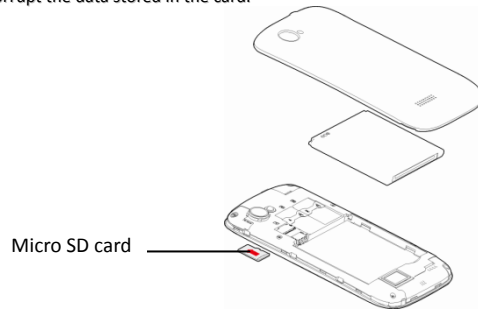


3. Finally insert the battery and replace the rear cover of the mobile phone.

Insert Memory card

1. Power off the mobile phone and remove the rear cover and battery.
 2. Insert the Micro SD card into the slot.
 3. Finally insert the battery and the rear cover of the mobile phone.
- Note: Use only compatible memory cards for use with this device.

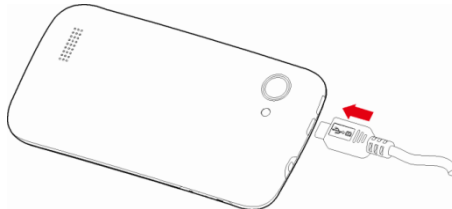
Incompatible memory cards may damage the card or the device and corrupt the data stored in the card.



Charge the Battery or Connect to a computer

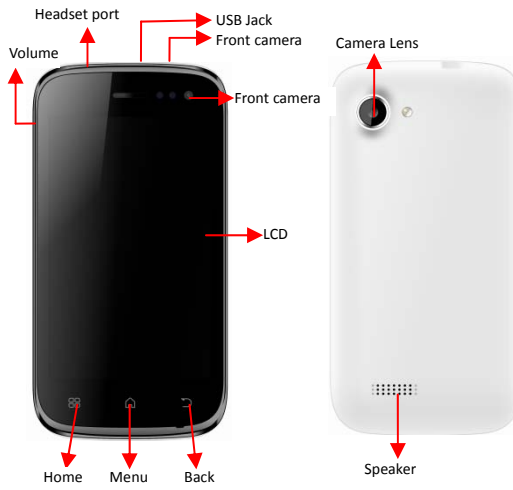
You can charge your battery using the charger or connect the USB cable (supplied with this phone) to the computer.

Note: Please use the specific battery, otherwise it may cause explosion.



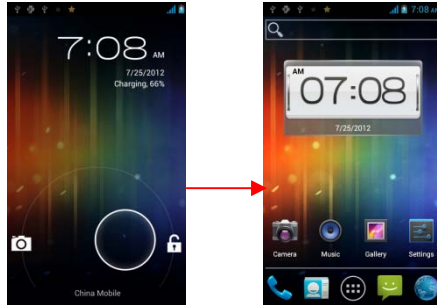
Keys and parts

The smart phone supports 3G Card and gives you marvelous feelings to experience on Camera, Video recorder, FM radio, Music and Sound recorder. Let you install various APPs, games, and more (supports APK format) by downloading from Android Market.



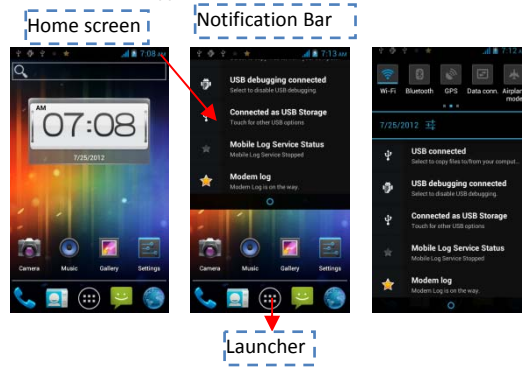
Lock and Unlock the Screen

Press power button to enter Sleep mode and meanwhile the screen will be locked; press power button again to wake up and then drag the lock to the right side to unlock.



Make it yours

- 1) Home screen: It is your starting point to access all the features on your phone. It displays application icons, widgets, shortcuts, and other features. Long press home screen and add Shortcuts, Widgets, Folders and Wallpaper.
- 2) Notification Bar: At the top of the screen, the Status bar displays the time, status, and notifications. If there is a new message, missed call or something in the notification bar, you can drag it down to open notification panel and click the desired one to have a view. When you finished, you can close it by dragging the panel up or pressing "Back".
- 3) Launcher: Touch the Launcher icon at the bottom of the screen to view all installed applications.



Add Widgets and more icons to Home Screen

Adding widgets and icons to home screen

Enter Launcher and long press and hold an application till the screen vibrates, and then release your finger hold.

Rearranging or removing widgets and icons on your Home screen

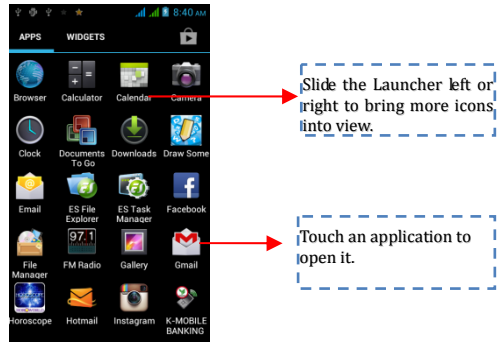
a). Long press and hold the widget or icon you want to move. Once the phone vibrates, don't release your hold on the icon. Drag the widget or icon to a new location on the screen. b) . Press and hold on an icon till the phone vibrates, and drag the widgets or icon to remove!



Enter Launcher

Open and Switch Applications

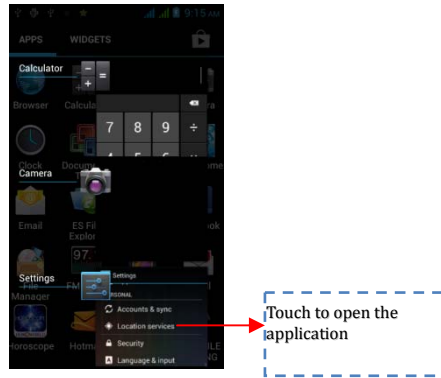
The Launcher holds icons for all of the applications on your phone, including any application that you downloaded from Android Market or other sources. On the Home screen, touch the Launcher Icon to open the main menu.




Press Home icon or Back icon to close the Launcher.

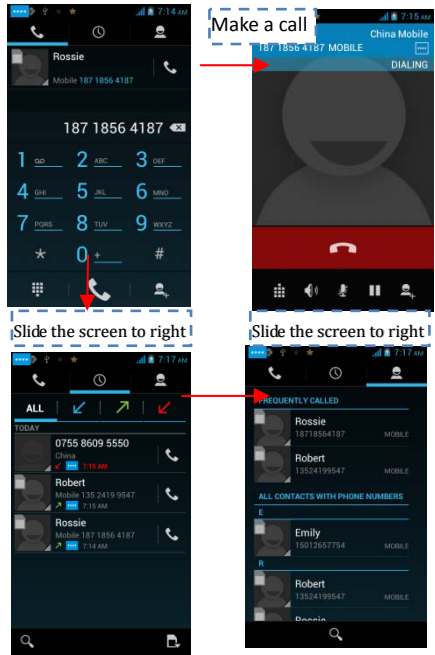
Switch to Recently Used Application

Press and hold the  icon for a few seconds.



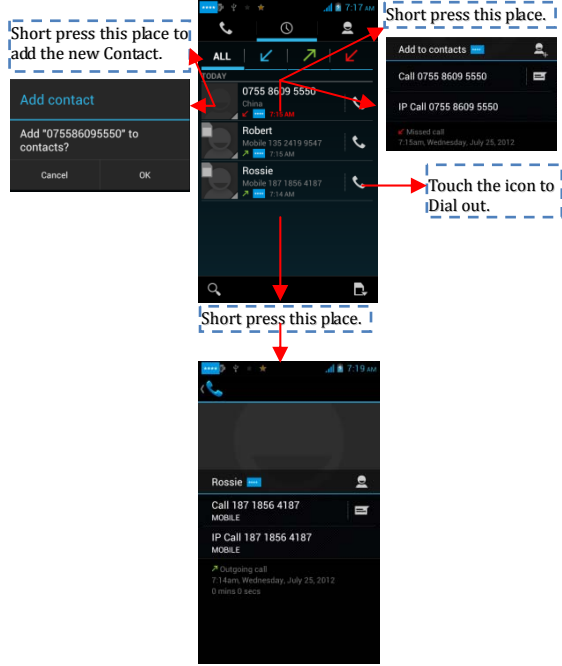
Make a call

On the start screen choose  and enter a complete phone number to make a call.




Call log

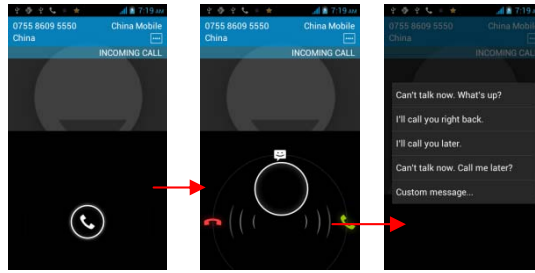
In call log options, you can Make a call, add new contact and send message etc.




Reject a Call by Sending a busy Message

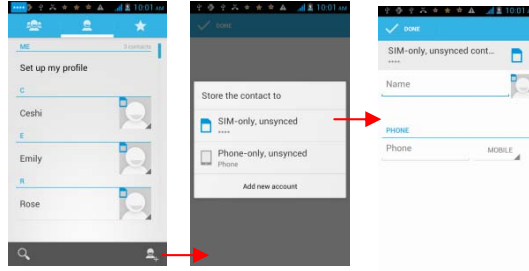
While there is an incoming call, you are inconvenient to accept the call, and then you can send a busy message for rejecting the call.

Drag the circle up to , some busy messages will show on the screen, short tap any of them to send out.



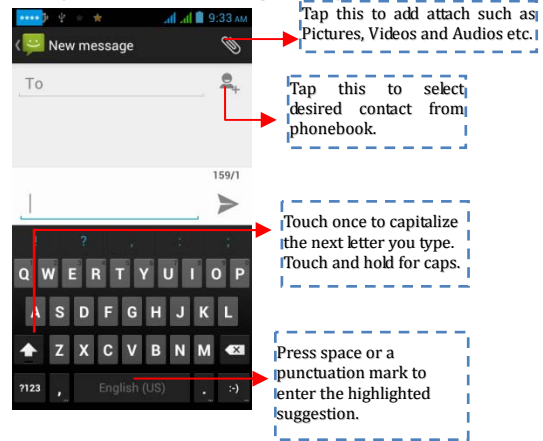
Add a contact

Tap  and enter Contacts and then add a contact (see figure below.)
Tap "+" to add a new contact to Phone or SIM card.

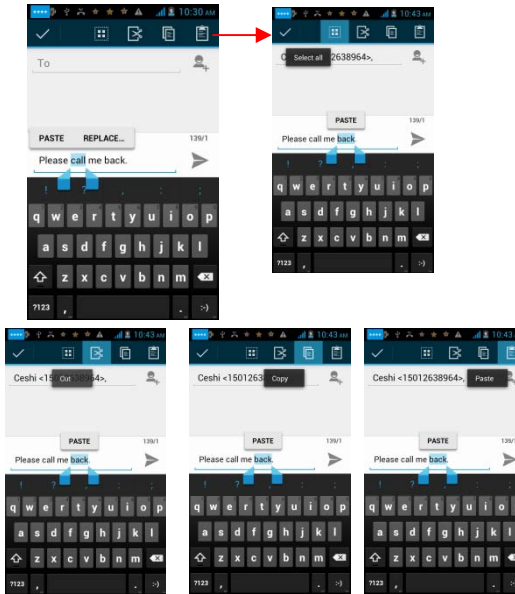


Send and Receive Message(s)

Enter **Messaging**, and then compose new message. You touch a text field where you want to enter text, to open the keyboard.



- a. When you are composing a new text message, you can select text for cutting or copying. The selected text is highlighted in blue.
- Touch the text field or portion that contains text. (see the below figure)

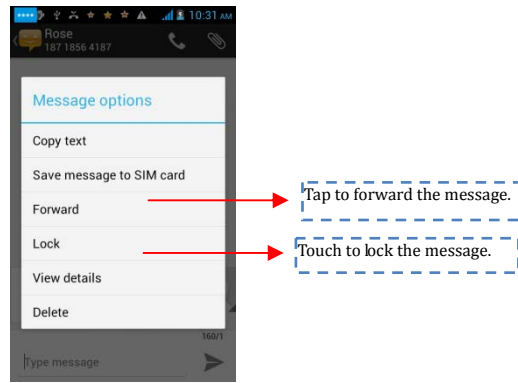


You can Select all contexts, copy, cut and paste.

b. When a new message comes, you can read by dragging notification panel and click the message, or entering **Message** to read it directly.

1. Long press one of the all message thread, you can delete the message thread.

2. Touch and hold a message in a message conversation window.



3. Touch **Forward** in the menu that opens.

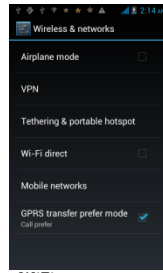
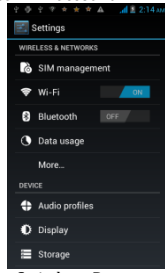
4. Add a contact.

5. Touch Send icon to send the message.

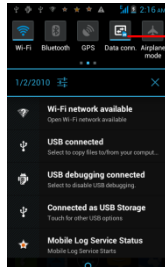
Browse the Web

a. Set up Internet/Data connection

Enter Settings > Wireless & networks> More, scroll down to find out Mobile network, and then enter "Access Points Names, choose the desired WAP account.



b. Switch on Data connection or WiFi

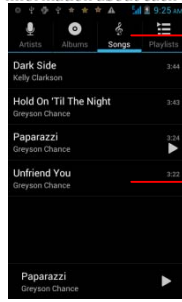


Touch it to switch on or off Data connection

To browse the web, you need switch on Data connection.
If there is WiFi around, you can switch on WiFi to use it browse the web.
Some may need password.

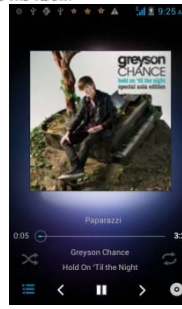
Enjoy Music

When you copy music to your SD card, the Music player searches the card for music files and builds a catalog of your music, based on information about each file that is stored in the file itself.



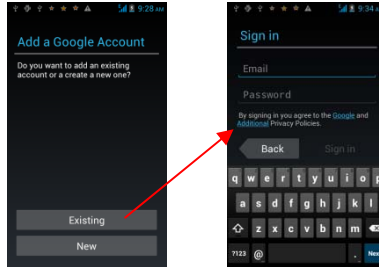
Touch a tab to view your library in one of four ways.

Touch to open the album, songs or playlist.

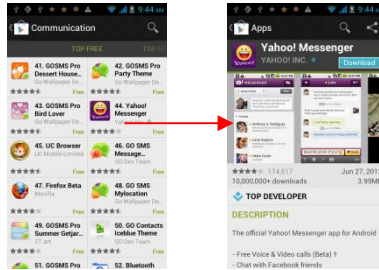


Download Applications From Android Market

a. Add a Google account

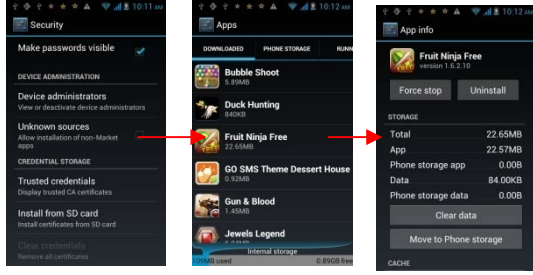


b. Enter Android Market (Play Store) and download apps.



Manage Applications/ Move to SD card

Enter Setting >Apps, then manage the applications.
As you install downloaded Apps, you need switch on "Unknown sources" in Security settings.



Maintenance & Safety

Please read and observe the following information for safe and proper use of your phone and to prevent damage. Also, keep the user guide in an accessible place at all the times after reading it.

1. After sales service

Kindly refer to the Warranty Card provided in the sales package box.

2. Charger and Adapter Safety

Charger and adapter are designed for indoor use only.

3. Battery Information and Care

- Please use the specific battery, otherwise it will cause explosion.
- Please dispose of your battery properly.
- Do not disassemble or short-circuit the battery.
- Keep the battery's metal contacts clean.
- Recharge the battery after long periods of non-use to maximize battery life.
- Battery life will vary due to usage patterns and environmental conditions.
- The self-protection function of the battery cuts the power of the phone when its operation is in an abnormal status. In this case, remove the battery from the phone, reinsert it, and turn the phone on.

4. General Notice

Using a damaged battery or placing a battery in your mouth may cause serious injury.

- Do not place items containing magnetic components such as a credit card, phone card, bank book, or subway ticket near your phone. The magnetism of the phone may damage the data stored in the magnetic strip.
- Talking on your phone for long period of time may reduce call quality due to heat generated during use.
- When the phone is not used for a long period time, store it in a safe place with the power cord unplugged.
- Using the phone in proximity to receiving equipment (i.e. TV or Radio) may cause interference to the phone.

- Do not immerse your phone in water. If this happens, remove the battery and take it to an Authorized Service Center.
- Do not paint your phone.
- The data saved in your phone might be deleted due to careless use, repair of the phone, or upgrade of the software. Please backup your important phone numbers. (Ring tones, text messages, voice messages, picture, and videos could also be deleted.) The manufacturer is not liable for damage due to the loss of data.
- Do not turn your phone on or off when the phone is close to your ear.

Warning

FCC RF Exposure Information and Statement

The SAR limit of USA (FCC) is 1.6W/kg averaged over one gram of tissue.

Product Smartphone, model number: Sage (FCC ID: ZYPS8073) has also been tested against this SAR limit. The highest SAR value reported under this standard during product certification for use at the head is 0.421W/kg and when properly worn on the body is 1.017 W/kg. The device was tested for typical body-worn operations with the back of the handset kept 1.0cm from the body. To maintain compliance with FCC RF exposure requirements, use accessories that maintain a 1.0cm separation distance between the user body and the back of the handset. The use of belt clips, holders and similar accessories should not contain metallic components in its assembly. The use of accessories that do not satisfy these requirements may not comply with FCC RF exposure requirements, and should be avoided.

This device complies with part 15 of the FCC Rules. Operation is subject to the following two conditions: (1) This device may not cause harmful interference, and (2) this device must accept any interference received, including interference that may cause undesired operation. Any Changes or modifications not expressly approved by the party responsible for compliance could void the user's authority to operate the equipment.

Note: This equipment has been tested and found to comply with the limits for a Class B digital device, pursuant to part 15 of the FCC Rules. These limits are designed to provide reasonable protection against harmful interference in a residential installation. This equipment generates uses and can radiate radio frequency energy and, if not installed and used in accordance with the instructions, may cause harmful interference to radio communications. However, there is no guarantee that interference will not occur in a particular installation. If this equipment does cause harmful interference to radio or television reception, which can be determined by turning the equipment off and on, the user is encouraged to try to correct the interference by one or more of the following measures:

--Reorient or relocate the receiving antenna.

--Increase the separation between the equipment and receiver.

--Connect the equipment into an outlet on a circuit different from that to which the receiver is connected.

--Consult the dealer or an experienced radio/TV technician for help.