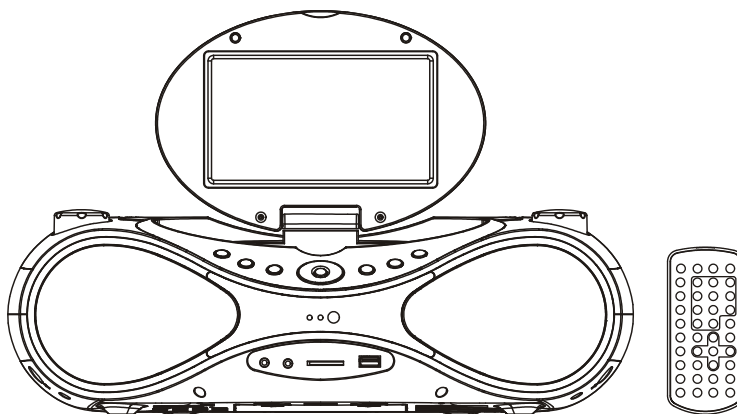


User Manual

**PORTABLE DVD/CD PLAYER
WITH FM RADIO, USB/CARD READER AND
BLUETOOTH RECEPTION**

Model: BTD280AR



Before attempting to connect, operate or adjust this player, please read these instructions completely.
And then put this manual in a safe place for future reference.

WARNING

- CAUTION: USE OF ANY CONTROLS, ADJUSTMENTS, OR PROCEDURES OTHER THAN THOSE SPECIFIED HEREIN MAY RESULT IN HAZARDOUS RADIATION EXPOSURE.
- CAUTION: DANGER OF EXPLOSION IF BATTERY IS INCORRECTLY REPLACED. REPLACE ONLY WITH THE SAME OR EQUIVALENT TYPE.
- TO PREVENT FIRE OR SHOCK HAZARD, DO NOT USE THIS PLUG WITH AN EXTENSION CORD, RECEPTACLE OR OTHER OUTLET UNLESS THE BLADES CAN BE FULLY INSERTED TO PREVENT BLADE EXPOSURE.
- WARNING: TO REDUCE THE RISK OF FIRE OR ELECTRIC SHOCK, DO NOT EXPOSE THIS APPLIANCE TO RAIN OR MOISTURE.
- WARNING: THE BATTERIES SHALL NOT BE EXPOSED TO EXCESSIVE HEAT SUCH AS SUNSHINE, FIRE OR THE LIKE.



The lightning flash with arrowhead symbol, within an equilateral triangle, is intended to alert the user to the presence of uninsulated "dangerous voltage" within the product's enclosure that may be of sufficient magnitude to constitute a risk of electric shock to persons.

CAUTION

**RISK OF ELECTRIC SHOCK
DO NOT OPEN**

WARNING: TO REDUCE THE RISK OF ELECTRIC SHOCK, DO NOT REMOVE COVER (OR BACK). NO USER-SERVICEABLE PARTS INSIDE. REFER SERVICING TO QUALIFIED SERVICE PERSONNEL.



The exclamation point within an equilateral triangle is intended to alert the user to the presence of important operating and maintenance (servicing) instructions in the literature accompanying the appliance.

IMPORTANT SAFETY INSTRUCTIONS

- 1) Read these instructions.
- 2) Keep these instructions.
- 3) Heed all warnings.
- 4) Follow all instructions.
- 5) Do not use this apparatus near water.
- 6) Clean only with dry cloth.
- 7) Do not block any ventilation openings. Install in accordance with the manufacturer's instructions.
- 8) Do not install near any heat sources such as radiators, heat registers, stoves, or other apparatus (including amplifiers) that produce heat.
- 9) Do not defeat the safety purpose of the polarized or grounding-type plug. A polarized plug has two blades with one wider than the other. A grounding type plug has two blades and a third grounding prong. The wide blade or the third prong are provided for your safety. If the provided plug does not fit into your outlet, consult an electrician for replacement of the obsolete outlet.
- 10) Protect the power cord from being walked on or pinch particularly at plugs, convenience receptacles, and the point where they exit from the apparatus.
- 11) Only use attachments/accessories specified by the manufacturer.
- 12) Use only with the cart, stand, tripod, bracket, or table specified by the manufacturer, or sold with the apparatus. When a cart is used, use caution when moving the cart/apparatus combination to avoid injury from tip-over.



S3125A

- 13) Unplug this apparatus during lightning storms or when unused for long periods of time.
- 14) Refer all servicing to qualified service personnel. Servicing is required when the apparatus has been damaged in any way, such as power-supply cord or plug is damaged, liquid has been spilled or objects have fallen into the apparatus, the apparatus has been exposed to rain or moisture, does not operate normally, or has been dropped.
- 15) This appliance shall not be exposed to dripping or splashing water and that no object filled with liquid such as vases shall be placed on the apparatus.
- 16) CAUTION: Visible and Invisible Laser Radiation when open and interlock defeated.
DO NOT STARE INTO BEAM.
- 17) Rating label is located at the bottom of enclosure.
- 18) "CAUTION" mark is also located at the bottom of enclosure.



WARNING

DO NOT INGEST BATTERY, CHEMICAL BURN HAZARD.

FCC Warnings

This device complies with Part 15 of the FCC rules. Operation is subject to the following two conditions:

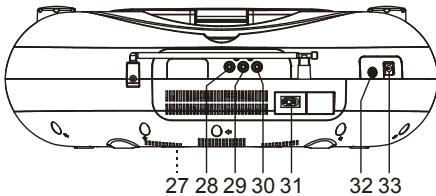
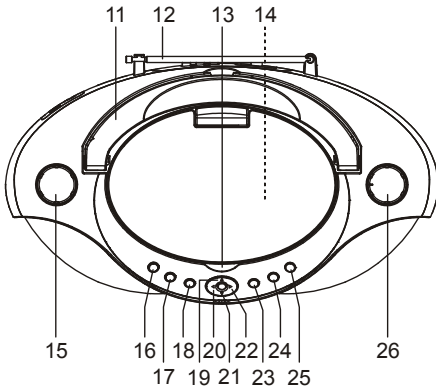
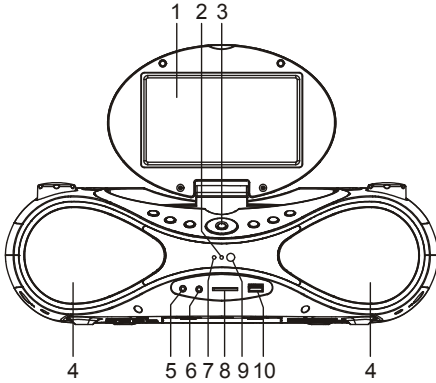
(1) This device may not cause harmful interference; and (2) this device must accept any interference received, including interference that may cause undesired operation.

WARNING: Changes or modifications to this unit not expressly approved by the party responsible for compliance could void the user's authority to operate the equipment.

NOTE: This equipment has been tested and found to comply with the limits for a Class B digital device, pursuant to Part 15 of the FCC Rules. These limits are designed to provide reasonable protection against harmful interference in a residential installation. This equipment generates, uses, and can radiate radio frequency energy and, if not installed and used in accordance with the instructions, may cause harmful interference to radio communications. However, there is no guarantee that interference will not occur in a particular installation. If this equipment does cause harmful interference to radio or television reception, which can be determined by turning the equipment off and on, the user is encouraged to try to correct the interference by one or more of the following measures:

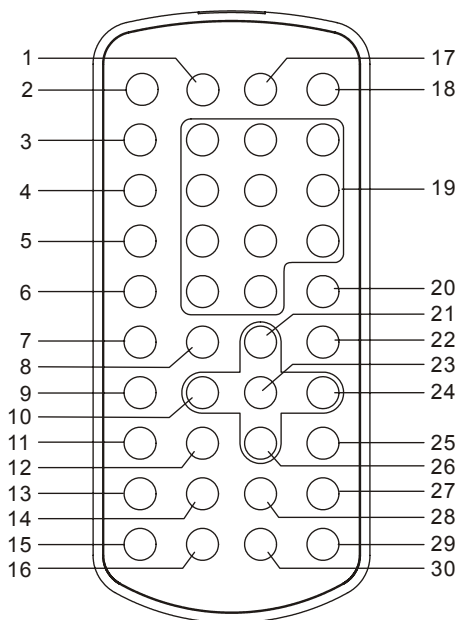
- Reorient or relocate the receiving antenna.
- Increase the separation between the equipment and receiver.
- Connect the equipment into an outlet on a circuit different from that to which the receiver is connected.
- Consult the dealer or an experienced radio/TV technician for help.

Illustration of the Controls/Jacks on the Main Unit



1. TFT DISPLAY
2. BLUETOOTH INDICATOR
3. OK BUTTON
4. SPEAKERS
5. MIC JACK
6. AV IN JACK
7. POWER INDICATOR
8. SD CARD SLOT
9. REMOTE SENSOR
10. USB PORT
11. HANDLE
12. FM TELESCOPIC ANTENNA
13. OPEN/CLOSE AREA
14. DISC TRAY (UNDER THE TFT DISPLAY)
15. VOLUME CONTROL KNOB
16. PLAY/PAUSE BUTTON
17. STOP/USB/SD BUTTON
18. MEM/PAIR BUTTON
19. NAVIGATION UP/MEM+ BUTTON
20. NAVIGATION LEFT BUTTON
21. NAVIGATION DOWN/MEM- BUTTON
22. NAVIGATION RIGHT BUTTON
23. SETUP BUTTON
24. SOURCE BUTTON
25. POWER BUTTON
26. TUNING CONTROL / NEXT/PREVIOUS KNOB
27. BATTERY COMPARTMENT
28. VIDEO OUTPUT JACK
29. LEFT AUDIO OUTPUT JACK
30. RIGHT AUDIO OUTPUT JACK
31. AC SOCKET
32. LINE IN JACK
33. DC IN JACK (OPTIONAL)

Illustration of the Keys on the Remote Controller



1. DISPLAY BUTTON
2. SOURCE BUTTON
3. VOLUME+ BUTTON
4. VOLUME- BUTTON
5. MUTE BUTTON
6. MENU BUTTON
7. SUBTITLE BUTTON
8. PLAY/PAUSE BUTTON
9. TITLE BUTTON
10. NAVIGATION LEFT BUTTON
11. AUDIO BUTTON
12. STEP BUTTON
13. ZOOM/SLOW BUTTON
14. MONO/ST BUTTON
15. PROG/ANGLE BUTTON
16. P/N BUTTON
17. SETUP BUTTON
18. POWER BUTTON
19. NUMERIC BUTTONS
20. CLEAR BUTTON
21. NAVIGATION UP/MEM+ BUTTON
22. STOP/USB/SD BUTTON
23. OK BUTTON
24. NAVIGATION RIGHT BUTTON
25. MEM/PAIR BUTTON
26. NAVIGATION DOWN/MEM-BUTTON
27. TUNE+/NEXT BUTTON
28. TUNE-/PREVIOUS BUTTON
29. SEARCH BUTTON
30. REPEAT BUTTON

12V DC IN JACK (OPTIONAL)

12V DC IN JACK is used to connect to external power source of an AC adaptor or a car adaptor. Please make sure that the DC voltage is 12V and with correct polarity as per below.

Center pin is positive

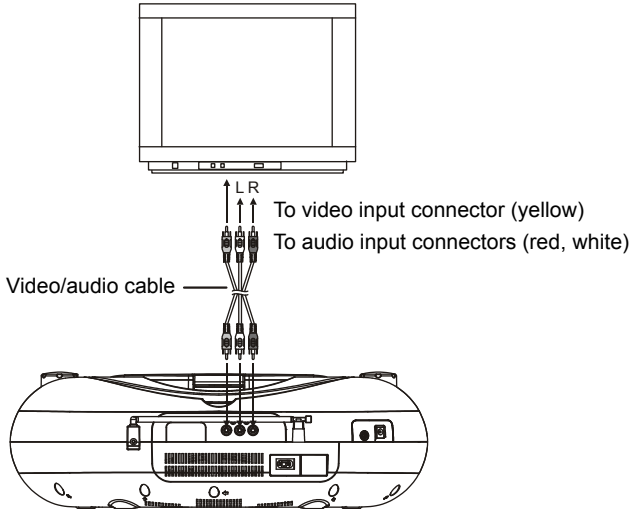


BASIC CONNECTION

- It is recommended to be connected to a multi-system TV.
- Ensure that this player and other equipment to be connected to the unit are in the standby or off mode and disconnect the AC power cords before commencing connection.
- Do not block ventilation holes of any piece of the equipment and arrange them so that air can circulate freely.
- Read through the instructions before connecting other equipment.
- Ensure that you observe the color coding when connecting audio, video cables. If the RCA adapter is supplied only, the audio/video RCA cable is required. Plug one end of the RCA adapter to the unit. Then connect the audio/video RCA cable to the RCA adapter and the television.

Note:

- During DVD play, the TV volume may be at a lower level than during TV broadcasts, etc. If this is the case, adjust the volume to the desired level.
- If the DVD/CD player is connected to the TV through a video cassette recorder, the picture may not be played back normally with some DVDs. If this is the case, do not connect the player via the VCR.

CONNECTING TO A STEREO TV SET**OPERATIONS****PREPARATION**

Power on the TV set and select video input mode.
Power on the audio system which is connected to the player.

GET STARTED

1. Lift up the screen and then lift up the disc cover to reveal the disc tray.
2. Place a disc onto the disc tray and then put down the disc cover.
3. Press the POWER button to turn on the unit, it will enter DVD mode and begin to read the disc and start playback automatically.
4. When a menu screen appears on the TV, press the numeric buttons or press the navigation buttons to select a preferred track number, then press OK button to start playback.

ADJUST THE VOLUME

Rotate the VOLUME knob on the unit or press the VOLUME +/- button on the remote to increase or reduce the volume.

SKIP AHEAD OR BACK

Clockwise/counterclockwise rotate the NEXT/PREVIOUS knob on the unit shortly or press NEXT or PREVIOUS button on the remote once during play to skip a chapter (DVD) or a track (CD) ahead or backwards.

RAPID ADVANCE/REVERSE

During playback, Clockwise/counterclockwise rotate and hold the NEXT/PREVIOUS knob on the unit or press and hold NEXT button or PREVIOUS button on the remote and then release, several times to

scan the disc forward or backward at X2, X4, X8, X20 of normal speed.

Press PLAY/PAUSE button to resume normal play.

STOP PLAYBACK

Press STOP button during playback to stop playback; the player activates its resume function when the STOP button is pressed in play mode; press PLAY/PAUSE button again, playback resumes at the point it stopped previously; open the disc cover or press the STOP button one more time to clear the resume function.

REPEAT BUTTON

Press the REPEAT button repeatedly during play, it will repeat play one chapter/title or repeat all (for DVD disc), or repeat play a track or all tracks (CD), or repeat play the specified points (A-B).

MUTE

In DVD mode, press MUTE button to switch off the audio output, press it again to resume normal play.

CHANGE THE TV SYSTEM

During playback, press P/N button to change the TV system directly.

SEARCH FOR PREFERRED SCENE

1. Press SEARCH button during play and highlight the item to be played (Title, Chapter, or Chapter time) by navigation buttons.
2. Input the desired number or time via the numeric buttons.
3. Press OK button to confirm and the playback from the located scene starts.
4. To exit search menu, press SEARCH button directly.

PAUSE OR STEP PLAY

During playback, press PLAY/PAUSE button to pause; in pause mode, each time the STEP button is pressed, the player will only play one frame; to resume normal play, press PLAY/PAUSE button again.

MULTI-ANGLE VIEWING (DVD ONLY)

Press and hold PROG/ANGLE button during playback to cycle through the available angles on the disc.

Note: only the DVDs shot with multi-angle scenes have this function.

SLOW PLAY

Press and hold ZOOM/SLOW button during playback, the disc will be played at 1/2 of normal speed at first, each time this button is pressed and held, the play speed becomes slower (down to 1/7 of normal speed). Press PLAY/PAUSE button, normal play will resume.

PROGRAM PLAY (UP TO 16 MEMORIES)

1. Press PROG/ANGLE during playback to display the program menu.
2. Select location(s) to be memorized via navigation buttons and then enter desired Titles/Chapters numbers via numeric buttons.

Note: Inputting leading zero is not necessary. Some figure couldn't be input, because it's greater figure than total title/chapter /track number on the disc.

Example: Track 3, press "3"

Track 12, press "+10" and then "2"

Track 21, press "+10" twice and then "1"

3. To start programmed playback, select PLAY on the menu; pressing PROG/ANGLE button again to exit programming.
4. To clear a programmed item, press PROG/ANGLE button to enter program menu and use navigation buttons to highlight the item to be clear, press CLEAR button on the remote to clear it.

5. To clear all items, select the <CLEAR> on the program menu, and then press OK button to confirm.
6. You could cancel program mode by clearing all the items in the program menu.

ZOOM PLAY

Press ZOOM/SLOW button continuously to zoom in the picture by 2, 3, and 4 times, zoom out by 1/2, 1/3, 1/4 of normal size.

Press this key once more when the picture is at 1/4 size to return to the normal size display.

Scroll to view the enlarged picture using navigation buttons.

ON SCREEN DISPLAY INFORMATION

When the player is in operation, press DISPLAY button continuously on the remote control, the screen will display parts of information (current disc type, title number, chapter number, playtime, audio language, audio type, subtitle language and multi angle, etc) in a sequence.

CHANGING AUDIO SOUNDTRACK LANGUAGE (DVD DISC)

It is possible to change the audio soundtrack language to a different language from the one selected at the initial settings (This operation works only with discs on which multiple audio soundtrack languages are recorded).

Press AUDIO button during DVD disc play, the sound track language changes with the current sound track number shown on the TV screen.

NOTE: When no soundtrack languages are recorded, pressing this button will not work.

CHANGING SUBTITLE LANGUAGE (DVD ONLY)

Press SUBTITLE button during playback, the subtitle language shown on the screen will change as a response to each press;

When the desired language appears, release the button to view the subtitle in that language.

Note: this function only works on the DVDs recorded with multi-language subtitles.

RETURN TO MAIN MENU AND PLAY THE TITLE (DVD)

During playback, press MENU button to return to main menu. Press TITLE button to play the title.

ENJOYING VIDEO CDS WITH PBC FEATURE

After loading a VCD 2.0/1.0 with PBC, the TV screen shows the Disc formats and then a menu. Select desired track by means of numeric buttons. Press MENU button to select PBC ON/OFF mode. Press TITLE button to return to PBC menu.

Rotate NEXT/PREVIOUS knob on the unit shortly or press NEXT or PREVIOUS button on the remote once during playback to skip a track ahead or backwards.

Press and hold ZOOM/SLOW button during playback, the disc will be played at 1/2 of normal speed at first, each time this button is pressed, the play speed becomes slower (down to 1/7 normal speed.)

Press PLAY/PAUSE button, normal play will resume.

Press REPEAT button repeatedly to repeat play a track or all tracks, or repeat play the specified points (A-B).

NOTE: Repeat 1/all feature for VCD disc will ONLY work in PBC OFF mode.

Press AUDIO button during VCD disc play to change audio output mode.

MP3/MPEG 4 PLAYBACK

1. Load the MP3/MPEG 4 disc onto the disc tray and the TV screen will show all its folders after a few seconds.
2. Select the folder you want by the navigation buttons and then OK button to confirm.
3. The files in this folder are displayed and select your favourable song via navigation buttons and press OK button to start playback.
4. Rotate NEXT/PREVIOUS knob shortly on the unit or press NEXT and PREVIOUS button on the

remote to select track directly.

5. Press REPEAT button to change the repeat play modes.

KODAK PICTURE CD / JPEG CD PLAYBACK

Slide show of Kodak Picture CD after being loaded begins automatically;

Folders of JPEG picture CD after being loaded are displayed on the TV screen; use the navigation buttons to select the desired folder and then press OK button to confirm.

The files in this folder are displayed and you can select your favourable pictures using the up/down navigation buttons and press OK button to start playback.

Preview of the picture will be displayed while you scroll across the filenames.

KODAK PICTURE CD / JPEG CD OPERATIONS

1. PLAY MODES

Press REPEAT button during play to change the play modes.

During playback, press STOP button to enter preview mode.

2. SKIP TO NEXT/PREVIOUS PICTURE

Clockwise rotate the NEXT/PREVIOUS knob on the unit shortly or press NEXT button on the remote to skip to the next picture; counterclockwise rotate the NEXT/PREVIOUS knob on the unit shortly or press the PREVIOUS button on the remote to skip to the previous picture.

3. PICTURE ROTATIONS

Press RIGHT and LEFT navigation buttons to rotate the picture clockwise and counterclockwise respectively.

4. PICTURE FLIP AND TURN

Press UP navigation button to flip the picture up or down.

Press DOWN navigation button to turn the picture left or right.

5. PICTURE ZOOM IN/OUT

Press ZOOM/SLOW button continuously, the picture zooms in by 2, 3, 4 times or zooms out by 1/2, 1/3, 1/4 of the original size.

Press this button once more when the picture getting 1/4 size to return to the normal play.

If the picture is enlarged, you may use the navigation buttons to view blocked parts of the picture.

6. SLIDE SHOW TRANSITION MODES

During slide show playback, press the PROG/ANGLE button cyclically to select a slide show transition mode to play the images.

EXTERNAL MEMORY MEDIA OPERATION (USB & SD CARD)

Insert an USB data traveller into the USB port in the DVD mode.

Press and hold STOP/USB/SD button to select USB mode among DISC, CARD and USB via navigation buttons and press OK button to confirm.

After the USB is successfully detected and read, the screen will show folders and tracks on the USB.

NOTE: The player can successfully play the music files with USB 1.0 and USB 2.0 storage device.

OR

Insert a SD card into the card slot.

Press and hold STOP/USB/SD button to select CARD mode among DISC, CARD and USB via navigation buttons and press OK button to confirm. Then the player will enter SD mode.

You may play the files stored in the storage media much in the same way as you do the MP3 disc.

CAUTION: To avoid electronic static discharge, don't touch the USB port and card slot during playback.

INITIAL SETTINGS

Initial settings page is for you to make your preferred settings up for your player. Once the initial settings are done they are retained in the CPU of the player until otherwise modified.

COMMON PROCEDURES FOR INITIAL SETTINGS

1. Press SETUP button to access the setup menu.
2. Use the navigation buttons to select the item you want to modify, press OK button to confirm, setting page with further setting items displayed shows on the TV screen. Again use navigation buttons to make changes. Press again OK button to confirm modifications.
3. Use navigation buttons to switch to another setting on the main setting page.
4. Press SETUP button to exit main setting page.

1. SYSTEM SETUP

1.1 TV SYSTEM - it is used to select the TV mode.

Please select this option as per your TV set.

1.2 SCREEN SAVER - when the player is not used for several minutes, a running DVD logo will move across the screen to protect the screen.

Options: ON: the screen saver is enabled.

OFF the screen saver is disabled.

1.3 TV TYPE- it is used to select the TV scan mode, please set as per your TV set.

Options: 4:3PS : Normal Pan & scan mode

4:3LB : normal Letter box mode

16:9 : 16:9 wide screen mode

1.4 PASSWORD - input password to unlock the system. The steps are as follows:

1.4.1 Enter SYSTEM SETUP, select the PASSWORD item by scrolling the down navigation button, and then press the right navigation button to select the input box.

1.4.2 Input user's password "0000" to unlock it, in this case, select the input box again to change the password by inputting another new four numeric numbers and then press OK button to confirm. When the password is changed, you are needed to input the new one to unlock the system.

1.4.3 Once you forget your own password, use the supervisor's password "8200" to unlock it.

NOTE: If wrong password was input in unlock status, the system will lock.

1.5 RATING - Set the rating of this player. If you want to change the rating of parental lock, please input the password to unlock first.

Options: 1 KID SAFE / 2 G / 3 PG / 4 PG 13 / 5 PG-R / 6R / 7 NC-17 / 8 ADULT

1.6 DEFAULT - Reset to factory settings.

Options: RESTORE

2. LANGUAGE SETUP

2.1 OSD LANGUAGE - It is used to select different On Screen Display language for different user.

2.2 AUDIO LANG - select preferred audio language.

(DVD only, need disc software support)

2.3 SUBTITLE LANG - Select preferred subtitle language.

(DVD only, need disc software support)

2.4 MENU LANG - Select preferred disc menu language.

(DVD only, need disc software support)

3. VIDEO SETUP

3.1 BRIGHTNESS - to set the brightness for the display.

Options: 0/2/4/6/8/10/12

3.2 CONTRAST - to set the contrast effect for display.

Options: 0/2/4/6/8/10/12

3.3 HUE - to set the colour impression for display.

Options: -6/-4/-2/0/+2/+4/+6

3.4 SATURATION - to set the saturation level for display.

Options: 0/2/4/6/8/10/12

4. SPEAKER SETUP

4.1 DOWNMIX

Options: LT/RT - Left/Right mix mode
STEREO - Stereo mode

BLUETOOTH OPERATION

This unit can receive stereo audio signal from a Bluetooth audio source device.

1. Power on the unit, switch to BT mode by pressing the SOURCE button.
2. Bluetooth indicator blinks rapidly and "PAIRING" shows on the screen while the Bluetooth is pairing.
3. Pair and connect to BTD280A on the Bluetooth audio source device.
4. When pairing is successful, Bluetooth indicator turns to solid blue and "CONNECTED" shows on the screen, it is ready to stream music.
5. Press the PLAY/PAUSE button to pause/resume the playback.
6. During playback, rotate the NEXT/PREVIOUS knob on the unit shortly or press the NEXT or PREVIOUS button on the remote to skip ahead or backward.

NOTE: The above steps for Bluetooth connection are intended for reference purposes only. Please refer to the instruction manual of the Bluetooth device for more details.

DISCONNECTION/RECONNECT TO THE BLUETOOTH AUDIO SOURCE

Press POWER button to turn the unit off, and to disconnect the Bluetooth device.

Turn the unit on and switch to BT mode to automatically retrieve the last paired Bluetooth device.

NOTE:

- If the external Bluetooth device is already paired with the BTD280A, but become unconnected even with both Bluetooth devices turned on, press and hold the MEM/PAIR button to re-link them.
- Simultaneous connection of two external Bluetooth audio devices to the unit is not supported. First disconnect the Bluetooth function of the paired peripheral, then press and hold the MEM/PAIR button to launch a search to find the second Bluetooth peripheral.

LINE IN

Follow the below steps to connect the unit to another audio device:

1. Connect an external audio device into the unit's LINE IN jack with the LINE OUT cable.
2. Press the POWER button to turn the unit on.
3. Press the SOURCE button repeatedly to switch the unit to LINE mode.
4. Power on the external device and begin playing.

AUDIO AND VIDEO INPUT

Your player can be used as a monitor to play the programs from DVD player or other video appliance through an AV cable.

Observe the following steps to input audio and video to the player:

1. Connect the external appliance into the player's AV IN jack with an AV cable.
2. Press the POWER button to turn the unit on.
3. Press the SOURCE button repeatedly to enter AV mode.
4. Power on the connected appliance and begin playing.

At the moment, you are able to enjoy the program displayed on the screen of the player.

FM RADIO OPERATION

1. Press the POWER button to turn the unit on.
2. Press the SOURCE button repeatedly to enter the FM mode.
3. Rotate the TUNING knob on the unit briefly or press the TUNE+/- button on the remote to fine tune the radio station. Rotate and hold the TUNING knob on the unit clockwise/counterclockwise or press and hold the TUNE+/- button on the remote for a little while and then release to auto search radio

station forward or backward respectively. When an available station is found, the unit will broadcast it immediately and the searching will stop.

4. The external FM telescopic antenna is directional. When receiving FM broadcasts, fully extend the FM telescopic antenna and adjust its direction for the best reception.
5. Rotate the VOLUME knob on the unit or press the VOLUME+/- button on the remote to adjust the volume level.
6. Press the POWER button to turn off the unit.

STORING YOUR FAVORITE RADIO STATION

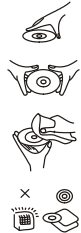
1. During radio broadcasting, press the MEM/PAIR button for storing the current station to the unit's memory, "SAVE _ _" show on the screen.
2. Press the MEM+ or MEM- button repeatedly to select the corresponding memory cell among 01-20 for storing the station.
3. Confirm your selection by pressing the MEM/PAIR button.
4. Repeat the above steps for storing other stations.
5. During radio broadcasting, press the MEM+ or MEM- button repeatedly to recall the stored stations.

NOTE: If a particular FM (STEREO) station is weak, or you hear too much background noise, try pressing the MONO/ST button to switch to FM (MONO) mode. This can often result in a much clearer reception.

MIC JACK

Connect a Microphone with 3.5mm plug to MIC jack. Then sing or speak to the microphone.

DISC HANDLING PRECAUTIONS



- Hold the disc by the edge so the surface will not be soiled with finger prints. Finger prints, dirt and scratches can cause skipping and distortion.
- Do not write on the label side with a ball-point pen or other writing utensils.
- Do not apply benzine, thinner, and liquid that prevents against static electricity.
- Be careful not to drop or bend the disc.
- Install only one disc on the disc tray.
- Do not try to close the disc tray when the disc is not installed properly.
- Be sure to store the disc in its case when not in use.

TROUBLESHOOTING

If your DVD player does not seem to be functioning properly, check the items below before you contact an authorized service center.

Symptom	Check
Power does not turn on or suddenly turns off.	<ul style="list-style-type: none"> • Make sure the AC power cable is securely connected to the main power. • Turn the power off and then back on.
Remote control won't work	<ul style="list-style-type: none"> • Check that the battery is inserted in the "+" and "-" direction properly. • The battery may be flat. Replace it with a new one. • Check that the signal transmission is directed at the remote control sensor on the DVD player. • Remove the obstacle between the remote controller and remote control sensor.
No picture or sound	<ul style="list-style-type: none"> • Check that the A/V cables are securely connected. • Check that the disc is a DVD, DVD-RW, VIDEO CD or AUDIO CD. • Do not use a disc that has scratches or dirt. • Check that the label-side of the disc is facing up. • The pick-up lens of the DVD player may be dirty. Contact the service center for lens cleaning. • Check that the TV channel is set to VIDEO or AV if viewing with a TV.
No sound	<ul style="list-style-type: none"> • Check the volume setting. If set to zero, turn up volume level. • During Bluetooth operation, make sure the unit is within Bluetooth operating range. • During AV IN or LINE IN operation, make sure the external devices are connected properly.
No picture and sound	<ul style="list-style-type: none"> • Check that the AC power cable is properly connected.
Distorted video or sound	<ul style="list-style-type: none"> • Use a disc without scratches or dents.
Radio sound distorted.	<ul style="list-style-type: none"> • Fine tune the station. • Fully extend the FM telescopic antenna and adjust its direction for the best reception.
Sound is distorted at Bluetooth/AV IN/LINE IN modes.	<ul style="list-style-type: none"> • Check if the sound source is distorted. Try a different audio source.

IMPORTANT SAFETY INSTRUCTIONS

- The apparatus shall not be exposed to dripping or splashing and that no objects filled with liquids, such as vases, shall be placed on the apparatus.
- When the mains plug or an appliance coupler is used as the disconnect device, the disconnect device shall remain readily operable. To be completely disconnected the power input, the mains plug of the apparatus or the appliance coupler shall be disconnected from the mains completely.
- No naked flame sources, such as lighted candles, should be placed on the apparatus.
- Minimum distances 2.0cm around the apparatus for sufficient ventilation. The ventilation should not be impeded by covering the ventilation openings with items, such as newspapers, table-cloths, curtains, etc.
- The use of apparatus is in tropical and/or moderate climates.
- Attention should be drawn to the environmental aspects of battery disposal.
- CAUTION: Danger of explosion if battery is incorrectly replaced. Replace only with the same or equivalent type.
- Battery shall not be exposed to excessive heat such as sunshine, fire or the like.
- The marking plate is located at the bottom of the apparatus.