



USER'S GUIDE
V:0952-1206-10



WTX002A/SPD308A Wireless Speaker System

For the most up-to-date version of this User's Guide, go to www.ilive.net

Warnings and Precautions

- **CAUTION:** TO PREVENT ELECTRIC SHOCK, MATCH WIDE BLADE OF PLUG TO WIDE SLOT, FULLY INSERT.
- **WARNING:** To reduce the risk of fire or electric shock, do not expose this apparatus to rain or moisture.
- **AVERTISSEMENT:** Pour réduire le risque d'incendie ou de choc électrique, ne pas exposer cet appareil sous la pluie et l'humidité.
- **CAUTION:** Use of any controls or adjustments or performance of procedures other than those herein specified may result in hazardous radiation exposure.
- **WARNING:** Changes or modifications to this unit not expressly approved by the party responsible for compliance could void the user's authority to operate the equipment.
- **WARNING:** Do not place the unit on top of any soft, porous, or sensitive surfaces to avoid damaging the surface. Use a protective barrier between the unit and surface to protect the surface.
- **WARNING:** Use of this unit near fluorescent lighting may cause interference regarding use of the remote. If the unit is displaying erratic behavior move away from any fluorescent lighting, as it may be the cause.
- **CAUTION:** Danger of explosion if battery is incorrectly replaced. Replace only with the same or equivalent type.
- **PRÉCAUTION:** Danger d'explosion si les piles sont remplacées de façon incorrect. Remplacer les piles seulement par le même type de pile ou l'équivalent.
- **WARNING:** There is a danger of explosion if you attempt to charge standard Alkaline batteries in the unit. Only use rechargeable NiMH batteries.
- **WARNING:** The battery, batteries, and battery pack shall not be exposed to excessive heat such as sunshine, fire, or the like.
- **WARNING:** The remote control's button cell battery contains mercury. Do not put in the trash, instead recycle or dispose of as hazardous waste

- **WARNING:** Lithium batteries, like all rechargeable batteries are recyclable and should be recycled or disposed of in normal household waste. Contact your local government for disposal or recycling practices in your area. They should never be incinerated since they might explode.
- **WARNING:** Shock hazard - Do Not Open.
- **AVIS: RISQUE DE CHOC ÉLECTRIQUE - NE PAS OUVRI**

Mains Plug or Direct plug-in adapter is used as disconnect device and it should remain readily operable during intended use. In order to disconnect the apparatus from the mains completely, the Mains Plug or Direct plug-in adapter should be disconnected from the mains socket outlet completely.

La fiche d'alimentation ou adaptateur de courant est utilisé comme dispositif de déconnexion et doit rester accessible pendant l'utilisation. Pour mettre l'appareil hors tension, la fiche ou adaptateur de courant doit être débranché de la prise de courant.

Do not mix old and new batteries.

Do not mix alkaline, standard (carbon-zinc), or rechargeable (ni-cad, ni-mh, etc) batteries.

No mezcle baterias viejas y nuevas.

No mezcle baterias alcalinas, estándar (carbono-zinc) o recargables (ni-cad, ni-mh, etc.).



WARNING: TO REDUCE THE RISK OF ELECTRIC SHOCK, DO NOT REMOVE COVER (OR BACK). NO USER-SERVICEABLE PARTS INSIDE. REFER SERVICING TO QUALIFIED SERVICE PERSONNEL.



The lightning flash with arrowhead symbol, within an equilateral triangle, is intended to alert the user to the presence of uninsulated "dangerous voltage" within the product's enclosure that may be of sufficient magnitude to constitute a risk of electric shock to persons.




The exclamation point within an equilateral triangle is intended to alert the user to the presence of important operating and maintenance (servicing) instructions in the literature accompanying the appliance.



This product utilizes a Class 1 laser to read Compact Discs. This laser Compact Disc Player is equipped with safety switches to avoid exposure when the CD door is open and the safety interlocks are defeated. Invisible laser radiation is present when the CD Player's lid is open and the system's interlock has failed or been defeated. It is very important that you avoid direct exposure to the laser beam at all times. Please do not attempt to defeat or bypass the safety switches.

Important Safety Instructions

1. Read these Instructions.
 2. Keep these Instructions.
 3. Heed all Warnings.
 4. Follow all instructions.
 5. Do not use this apparatus near water.
 6. Clean only with a dry cloth.
 7. Do not block any ventilation openings. Install in accordance with the manufacturer's instructions.
 8. Do not install near any heat sources such as radiators, heat registers, stoves, or other apparatus (including amplifiers) that produce heat.
 9. Do not defeat the safety purpose of the polarized or grounding - type plug. A polarized plug has two blades with one wider than the other. A grounding type plug has two blades and a third grounding prong. The wide blade or the third prong are provided for your safety. When the provided plug does not fit into your outlet, consult an electrician for replacement of the obsolete outlet.
 10. Protect the power cord from being walked on or pinched particularly at plugs, convenience receptacles, and the point where they exit from the apparatus.
 11. Only use attachments/accessories specified by the manufacturer.
-
12.  Use only with a cart, stand, tripod, bracket, or table specified by the manufacturer, or sold with the apparatus. When a cart is used, use caution when moving the cart/apparatus combination to avoid injury from tip-over.
-
13. Unplug this apparatus during lightning storms or when unused for long periods of time.
 14. Refer all servicing to qualified service personnel. Servicing is required when the apparatus has been damaged in any way, such as power-supply cord or plug is damaged, liquid has been spilled or objects have fallen into the apparatus, the apparatus has been exposed to rain or moisture, does not operate normally, or has been dropped.

Special note: When placing your unit on a lacquered or natural finish, protect your furniture with a cloth or other protective material.

FCC Warnings

WARNING: Changes or modifications to this unit not expressly approved by the party responsible for compliance could void the user's authority to operate the equipment.

NOTE: This equipment has been tested and found to comply with the limits for a Class B digital device, pursuant to Part 15 of the FCC Rules. These limits are designed to provide reasonable protection against harmful interference in a residential installation. This equipment generates, uses, and can radiate radio frequency energy and, if not installed and used in accordance with the instructions, may cause harmful interference to radio communications. However, there is no guarantee that interference will not occur in a particular installation. If this equipment does cause harmful interference to radio or television reception, which can be determined by turning the equipment off and on, the user is encouraged to try to correct the interference by one or more of the following measures:

- Reorient or relocate the receiving antenna.
- Increase the separation between the equipment and receiver.
- Connect the equipment into an outlet on a circuit different from that to which the receiver is connected.
- Consult the dealer or an experienced radio/TV technician for help.

This equipment complies with FCC RF radiation exposure limits set forth in an uncontrolled environment. This equipment should be installed and operated with a minimum distance of 20 centimeters between the radiator and your body. This transmitter must not be co-located or operating in conjunction with any other antenna or transmitter.

Additional Warnings

- The apparatus shall not be exposed to dripping or splashing and that no objects filled with liquids, such as vases, shall be placed on apparatus.
L'appareil ne doit pas être exposé aux écoulements ou aux éclaboussures et aucun objet ne contenant de liquide, tel qu'un vase, ne doit être placé sur l'objet.
- Battery shall not be exposed to excessive heat such as sunshine, fire or the like.
Les piles ne doivent pas être exposées à de forte chaleur, tel qu'à la lumière du soleil, au feu ou autres choses de semblable.
- Caution marking is located at the rear or back of the apparatus.
Attention marquage est situé à l'arrière ou à l'arrière de l'appareil
- The marking information is located at the rear or back of apparatus.
Les informations de marquage est situé à l'arrière ou à l'arrière de l'appareil.



This symbol indicates that this product incorporates double insulation between hazardous mains voltage and user accessible parts.

Wireless Speaker System

Base Station Features

- Digital 2.4 GHz ISM wireless transmitter: Transmission distance up to 200 ft line-of-sight and up to 90 ft indoors
- 3.5mm audio input
- DC power: requires an AC/DC adapter (included)

Wireless Speaker Features

- Independent volume setting for each speaker, rotary volume control
- Power On/Status LED
- Pairing button
- Weather resistant
- AC power: built-in AC power cable
- DC power : requires 6, D size, batteries (not included)

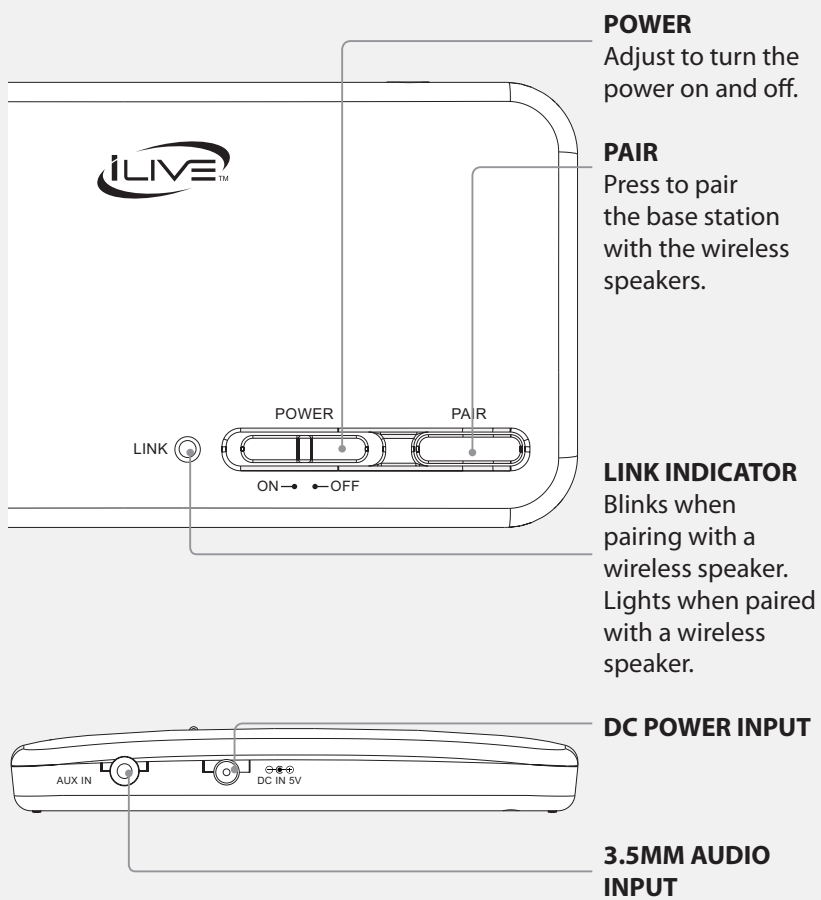
Included

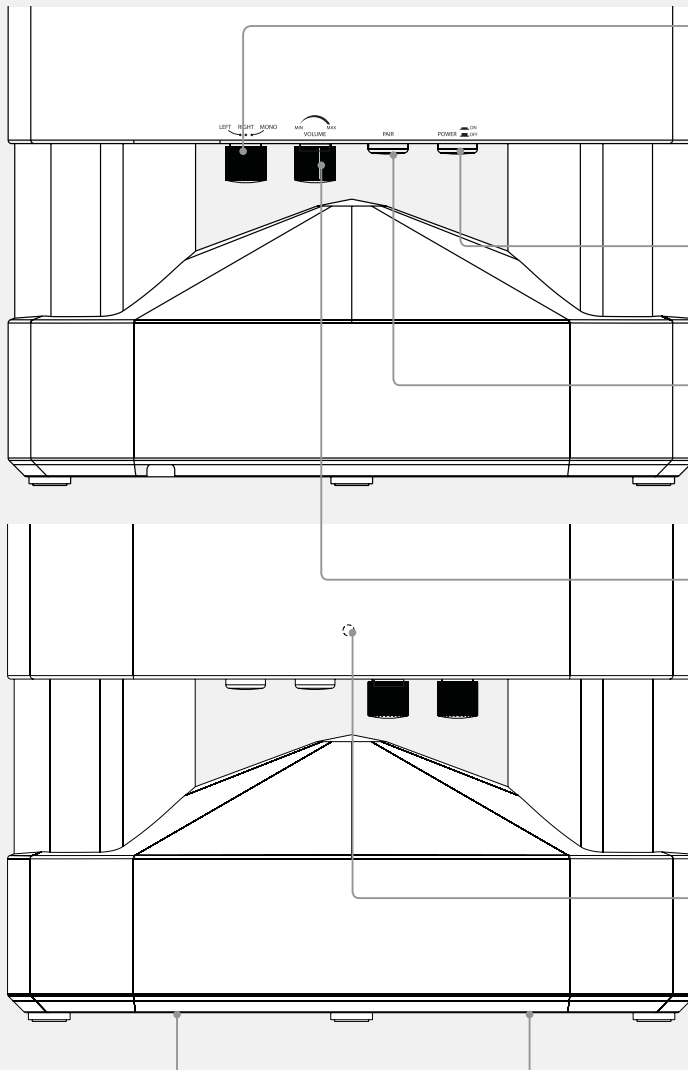
- 3.5mm audio cable
- 3.5mm to stereo RCA adapter
- AC/DC power adapter

Table of Contents

Warnings and Precautions	2
Important Safety Instructions	3
Wireless Speaker System	4
Base Station Features	
Wireless Speaker Features	
Included	
Table of Contents	5
Introduction	6
Setup	8
Power	
Speakers - Power	
Speakers - Battery Power	
Pairing the Wireless Speaker with the Base Station	9
Link Indicators	
Transmission Range	
Pairing the Wireless Speaker with the Base Station	10
Before Pairing	
Pairing	
3.5mm Audio Input	11
Using the 3.5mm Audio Input	
Company Information	12
International Support	
Contact Information	

Introduction





LEFT/RIGHT/MONO
Adjust to switch between Left, Right, and Mono speaker modes.

POWER
Press to turn the speaker off and on.

PAIR
Press and hold to pair the speaker with nearby base stations.

SPEAKER VOLUME
Turn to adjust the volume of the wireless speaker.

LINK INDICATOR
Indicates the current status of the wireless speaker's link with the base station.

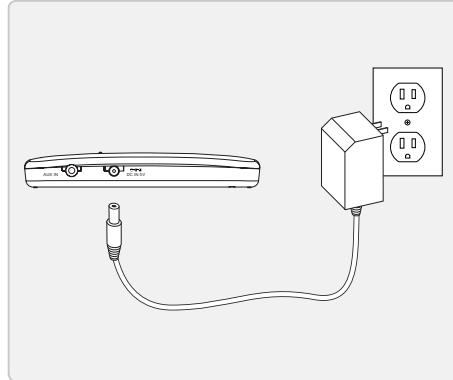
BATTERY COMPARTMENT
Requires 6 D batteries, not included.

AC POWER CORD
Use to connect the wireless speaker to a standard AC outlet.

Setup

Power

Plug the included AC/DC power adapter into the **DC POWER INPUT** to power the base station.

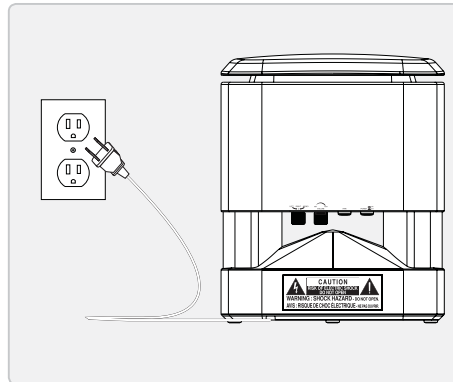


Speakers - Power

Power the wireless speakers by connecting them to a standard AC outlet using the attached AC power cable.

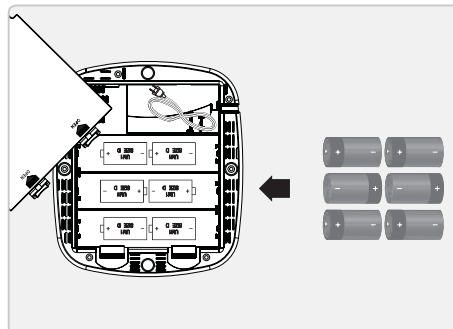
The AC power cable is stored inside of the wireless speaker's battery compartment.

After extending the AC power cable out from the battery compartment, snap the battery compartment door back into position to keep the internal elements of the wireless speaker from being exposed.



Speakers - Battery Power

Requires 6, D size, batteries (not included).



Pairing the Wireless Speaker with the Base Station

Link Indicators

Off

Powered off.

Slow Flashes

Standby mode.

Quick Flashes

Attempting to pair.

Solid Light

Paired and playing.

If the base station is not playing audio, either from the dock for iPod or the Auxiliary input, then both the base station and wireless speakers will go into Standby mode. Once you begin playing audio from the base station, both the base station and wireless speaker will come out of Standby mode.

Transmission Range

Once the base station is paired with a wireless speaker, the wireless speaker can be moved approximately 200ft (line-of-sight) or approximately 90ft (indoors) and still receive audio from the base station.

Results will vary depending on the number and size of obstructions between the base station and the wireless speaker.

How many speakers can I pair to one base station?

Up to 20 wireless speakers can be paired with one base station. Additional speakers are sold separately.

Pairing the Wireless Speaker with the Base Station

Before Pairing

The two wireless speakers included in the same box as the base station are pre-paired with that base station. Any additional speakers will need to be paired by following the directions below.

When pairing the base station with a wireless speaker you will need to press the Pair button on the base station and wireless speaker simultaneously. Because of this, you will need to have both the base station and wireless speaker within reach when you pair them.

What does it mean to Pair?

Pairing the base station with a wireless speaker allows the base station to recognize that wireless speaker. Once paired, the base station will remember that wireless speaker and transmit audio through it.

Pairing

1. Plug the base station into a power source, and press the Power button to power the base station on.
2. The base station Link Indicator will flash when the base station is powered on.
3. Plug the wireless speaker into a power source or insert 6 D batteries, not included, and press the Power button to power the wireless speaker on.
4. The wireless speaker Link Indicator will flash when the wireless speaker is powered on.
5. Adjust the Volume on the wireless speaker to approximately the half-way point between min. and max volume.
6. Simultaneously press and hold the Pair button on the base station and the Pair button on the wireless speaker for 5 seconds.
7. The wireless speaker will emit a long beep when it is paired with the base station.
If the wireless speaker emits short repeating beeps, it was not able to pair with the base station. Repeat steps 1-4 until you hear the long beep.
After pairing, the wireless speaker may take up to 30 seconds to begin playing audio from the paired base station.
Repeat steps 1-4 for each additional wireless speaker you want to pair with the base station.

3.5mm Audio Input

Using the 3.5mm Audio Input

Requires a 3.5mm audio cable (included) and a 3.5mm to stereo RCA adapter (included)

1. Connect a 3.5mm audio cable to the **3.5MM AUDIO INPUT** on the side of the base station and the 3.5mm to stereo RCA adapter.
2. Connect the 3.5mm to stereo RCA adapter to the audio output on an audio source.
3. Use the connected audio source's native controls to play and control music played through the connected base station and linked wireless speakers..

Company Information

International Support

To download this User's Guide in English, Spanish, or French, visit the support section at www.ilive.net.

Para transferir esta guía de usuario en inglés, español, o francés, visite la sección de la ayuda en www.ilive.net.

Pour télécharger ce guide de l'utilisateur en anglais, espagnol, ou français, visitez la section de soutien chez www.ilive.net.

Contact Information

Phone: 1-888-999-4215

Email: customerservice@ilive.net

Parts Email: partsinfo@dpi-global.com

Website: www.ilive.net